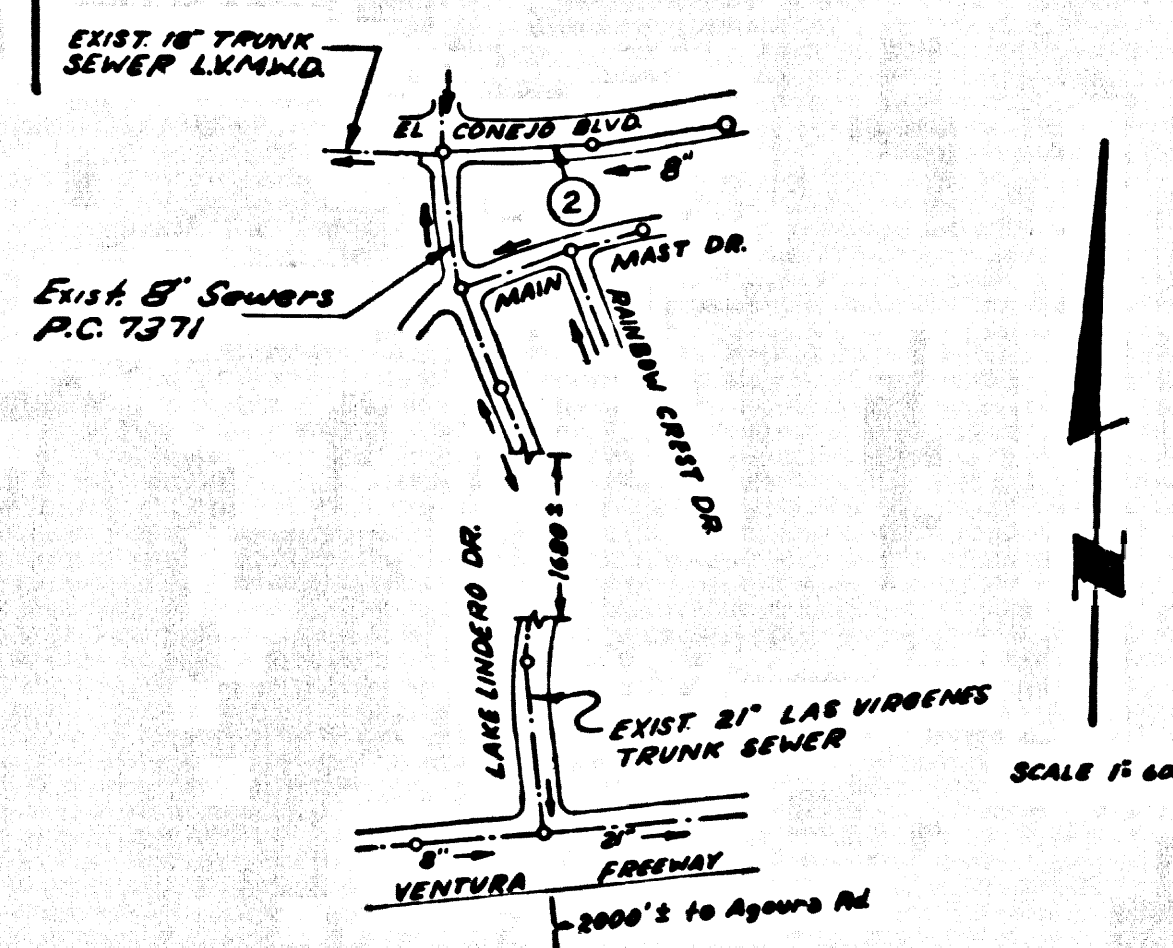


B.M. SY 5639 ELEV. 960.472
 BR. CAP IN CONC. MON. 6" DIA. ON E
 VENTURA BOULEVARD E.C. STA.
 53+98.1 ± 2.4 MI. W. CORNELL RD.
 MALIBU QUAD. 19.60



INDEX MAP
 P.C. 7947

THE ACCURACY OF THE LOCATION OF OR THE EXISTENCE OR NON-EXISTENCE OF ANY UTILITY PIPE OR STRUCTURE WITHIN THE LIMITS OF THIS PROJECT DOES NOT CONSTITUTE RESPONSIBILITY BY THE ENGINEER.

TESTING PER LAS VIRGENES MUNICIPAL WATER DISTRICT

1. INFILTRATION AND LEAKAGE TEST:
 METHOD USED FOR TESTING WILL BE THE SAME AS LOS ANGELES COUNTY EXCEPT THE FORMULA TO BE USED IS AS FOLLOWS:
 0.033 GALLONS/MINUTE/INCH OF DIAMETER/1000 FEET OR 250 GALLONS/LAY/INCH OF DIA./MILE
2. MANHOLE LEAKAGE TEST:
 AT THE DISCRETION OF THE DISTRICT'S REPRESENTATIVE ONE MANHOLE OUT OF TEN MANHOLES AND A MINIMUM OF TWO WILL BE FILLED WITH WATER AND AFTER THREE HOURS WILL BE CHECKED FOR LEAKAGE WITH NO DROP IN LEVEL. FOR EVERY MANHOLE NOT PASSING THE TEST FIVE MORE WILL BE TESTED AT THE DISCRETION OF THE DISTRICT'S REPRESENTATIVE.
3. AIR TESTING:
 WHERE THE DIFFERENCE IN ELEVATION BETWEEN THE INVERT OF THE UPPER STRUCTURE AND THE INVERT OF THE LOWER STRUCTURE IS MORE THAN SIX (6) FEET AN AIR TEST WILL BE MADE. THE TIME TAKEN TO LOSE ONE (1) POUND PER SQUARE INCH GAUGE PRESSURE FROM THREE (3) POUNDS PER SQUARE INCH GAUGE PRESSURE TO TWO (2) POUNDS PER SQUARE INCH GAUGE PRESSURE SHALL NOT BE LESS THAN TIMES SHOWN ON THE FOLLOWING TABLE:

MAIN PIPE DIAMETER	MINIMUM TIME LOSS
6"	1 MINUTE
14"	2 MINUTES
21"	3 MINUTES
35"	4 MINUTES

IF THE TIME IS LESS THAN LISTED IN THE TABLE ABOVE THE CONTRACTOR SHALL MAKE REPAIRS AS ARE NECESSARY TO ELIMINATE EXCESSIVE LEAKAGE.

DOUBLE SCALE
 CALABASAS BLDG. DIST. NO. 91

PROFILE ALIGNMENT AND GRADE OF
 SANITARY SEWERS P.C. 7947
 TO BE CONSTRUCTED IN PAGE 1

EL CONEJO BLVD.
 PRIVATE CONTRACT NO. 7947

W.S. 93
 1 SHEET OF 2 PAGES
 SCALE: HORIZ. 1" = 40' VERT. 1" = 4'
 SEPTEMBER, 1967
 PREPARED IN THE OFFICES OF
 MCINTIRE & QUIROS INC.
 670 MONTEREY PASS ROAD MONTEREY PARK, CALIF.
 REG. C. E. NO. 15810

4008

FOR LEGEND SEE PLAN NO. S-1

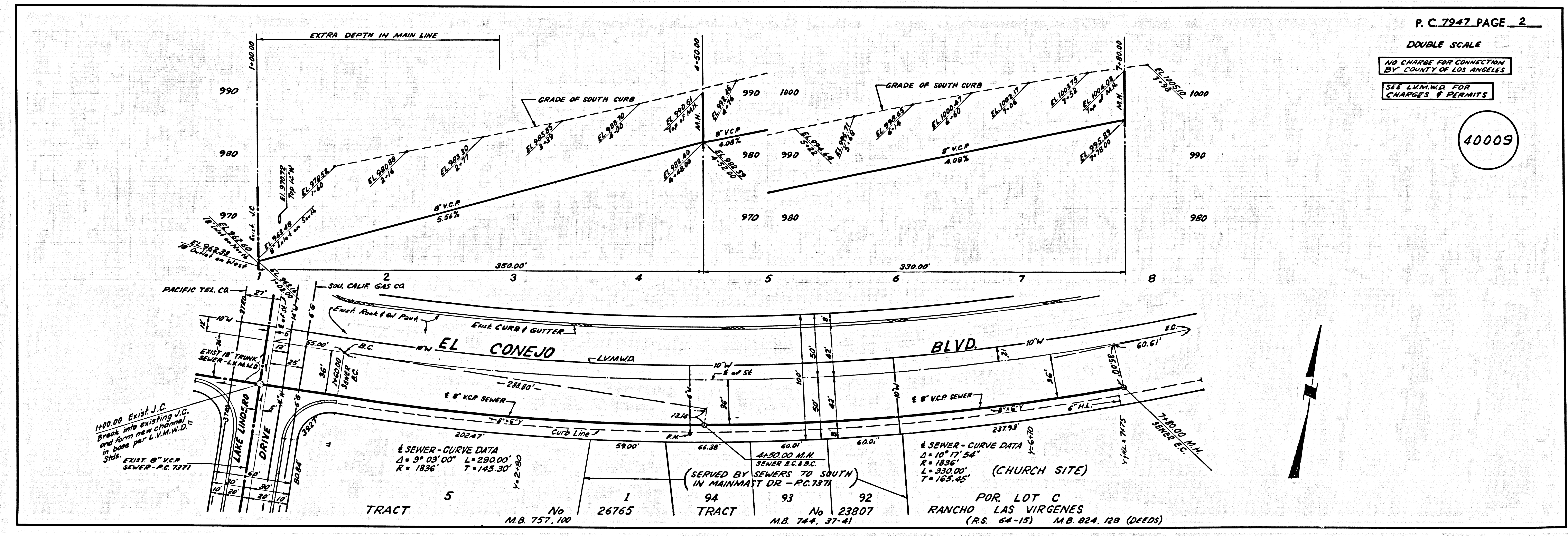
NOTE:
 GRADES TO WHICH THE IMPROVEMENT IS TO BE CONSTRUCTED ARE SHOWN ON PLANS AND PROFILES. GRADE POINTS FOR TOP OF CURBS, CENTER LINE OF STREETS, OR CENTER LINE OF ALLEYS ARE SHOWN BY CIRCLES ON PROFILES. AT ALL POINTS BETWEEN DESIGNATED POINTS THE GRADE SHALL BE ESTABLISHED SO AS TO CONFORM TO A STRAIGHT LINE DRAWN BETWEEN SAID DESIGNATED POINTS. ELEVATIONS ARE IN FEET ABOVE U.S.C. & G.S. SEA LEVEL DATUM OF 1929.
 THIS DRAWING AND THE DATA HEREON ARE HEREBY MADE A PART OF THE SPECIFICATIONS FOR PUBLIC WORKS CONSTRUCTION AND SHALL BE CONSIDERED AS SUCH. AS REVISIONS, AND SHALL BE PROSECUTED ONLY IN THE PRESENCE OF THE COUNTY ENGINEER.
 BEFORE WORK CAN BE STARTED, THE CONTRACTOR MUST OBTAIN A PERMIT TO EXCAVATE IN COUNTY STREETS FROM THE L.A. COUNTY ROAD DEPT., DISTRICT OFFICE NO. 8, AND PAY A FEE TO THE COUNTY ENGINEER, ROOM 306 COUNTY ENGINEERING BUILDING, 100 WEST SECOND STREET OR 100 WEST SECOND STREET, LOS ANGELES, CALIFORNIA. REGIONAL OFFICE, SUFFICIENT TO COVER THE COST OF CONSTRUCTION INSPECTION AND RECORD PLANS.
 APPROVAL OF THIS PLAN BY THE COUNTY OF LOS ANGELES DOES NOT CONSTITUTE A REPRESENTATION AS TO THE ACCURACY OF THE LOCATION OF OR THE EXISTENCE OR NON-EXISTENCE OF ANY UNDERGROUND UTILITY PIPE, OR STRUCTURE WITHIN THE LIMITS OF THIS PROJECT. THIS NOTE APPLIES TO ALL PAGES.
 IF WORK IS TO BE DONE IN A STATE HIGHWAY, A PERMIT MUST BE OBTAINED FROM THE STATE OF CALIFORNIA, DIVISION OF HIGHWAYS, 130 SOUTH SPRING STREET, LOS ANGELES, CALIFORNIA.

COUNTY OF LOS ANGELES, CALIFORNIA
 LAS VIRGENES MUNICIPAL WATER DISTRICT
 JOHN A. LAMBIE, COUNTY ENGINEER
 APPROVED BY Robert M. Miller REGIONAL ENGINEER
 APPROVED BY J. N. 0368.69 GENERAL MGR. CHIEF ENGINEER

COLLECT CHARGES AS INDICATED
 J. Lambie whole

CHECKED BY: Bernard Volody 11-10-67
 REG. C.E. NO. 10558

J. N. 0368.69



P.C. 7947 PAGE 2

DOUBLE SCALE
 NO CHARGE FOR CONNECTION BY COUNTY OF LOS ANGELES
 SEE L.V.M.W.D. FOR CHARGES & PERMITS

4009