

B.M. # SY 1929 ELEV. 920.634 (1960 ADJ)
 R. D. M. TAG CONC. Cb. 5' SE GUARD HOUSE
 ENTRANCE TO MIDDEN HILLS 2' S NORTH
 & LONG VALLEY ROAD (PRIVATE ROAD)
 MALIBU QUAD. 19 60

TESTING:

- INFILTRATION AND LEAKAGE TEST:** METHOD USED FOR TESTING WILL BE THE SAME AS LOS ANGELES COUNTY, EXCEPT THE FORMULA TO BE USED IS AS FOLLOWS:
 $0.033 \text{ GALLONS/MINUTE/INCH OF MAINLINE DIAMETER/100 FEET, OR } 250 \text{ GALLONS/DAY/INCH OF DIAMETER/MILE.}$
- MANHOLE LEAKAGE TESTS:** AT THE DISCRETION OF THE DISTRICT'S REPRESENTATIVE ONE MANHOLE OUT OF SEVEN MANHOLES, AND A MINIMUM OF TWO WILL BE FILLED WITH WATER AND AFTER THREE HOURS WILL BE CHECKED FOR LEAKAGE, WITH NO DROP IN LEVEL, EXCEPT ONE MANHOLE NOT PASSING TESTS, FURTHER WILL BE TESTED AT THE DISCRETION OF THE DISTRICT'S REPRESENTATIVE.
- AIR TESTING:** WHERE THE DIFFERENCE IN ELEVATION BETWEEN THE INVERT OF THE UPPER STRUCTURE AND THE INVERT OF THE LOWER STRUCTURE IS MORE THAN SIX FEET (6) AN AIR TEST WILL BE MADE.
 THE TIME TAKEN TO LOSE ONE (1) POUND PER SQUARE INCH GAUGE PRESSURE FROM THREE (3) POUNDS PER SQUARE INCH GAUGE PRESSURE TO TWO (2) POUNDS PER SQUARE INCH GAUGE PRESSURE SHALL NOT BE LESS THAN TIMES SHOWN ON THE FOLLOWING TABLE:

MAIN PIPE DIAMETER	MINIMUM TIME LOSS
8" TO 14"	1 MINUTE

 IF THE TIME IS LESS THAN LISTED IN THE TABLE ABOVE THE CONTRACTOR SHALL MAKE SUCH REPAIRS AS ARE NECESSARY TO ELIMINATE EXCESSIVE LEAKAGE. THE CONTRACTOR SHALL NOTIFY THE L.V.M.W.D. 48 HRS. PRIOR TO COMMENCING WORK: TELEPHONE 213-889-0110.

**DOUBLE SCALE
 CALABASAS BLDG. DIST. NO. 9.1**

PROFILE, ALIGNMENT AND GRADE OF **P.C. 7954**
SANITARY SEWERS PAGE 1
 TO SERVE
CALABASAS PARK RESTAURANT

PRIVATE CONTRACT NO. 7954

W.S. 60 54
 1 SHEETS, 2 PAGES

SCALE: VERT. 1"=4' HORIZ. 1"=40' SEPTEMBER, 1967

PREPARED IN THE OFFICE OF
BECHTEL CORPORATION
 23600 CALABASAS ROAD, CALABASAS, CALIFORNIA.

By: *Robert G. Roney*
 REG. C. E. NO. 14523
 FOR LEGEND SEE PLAN NO. S-1

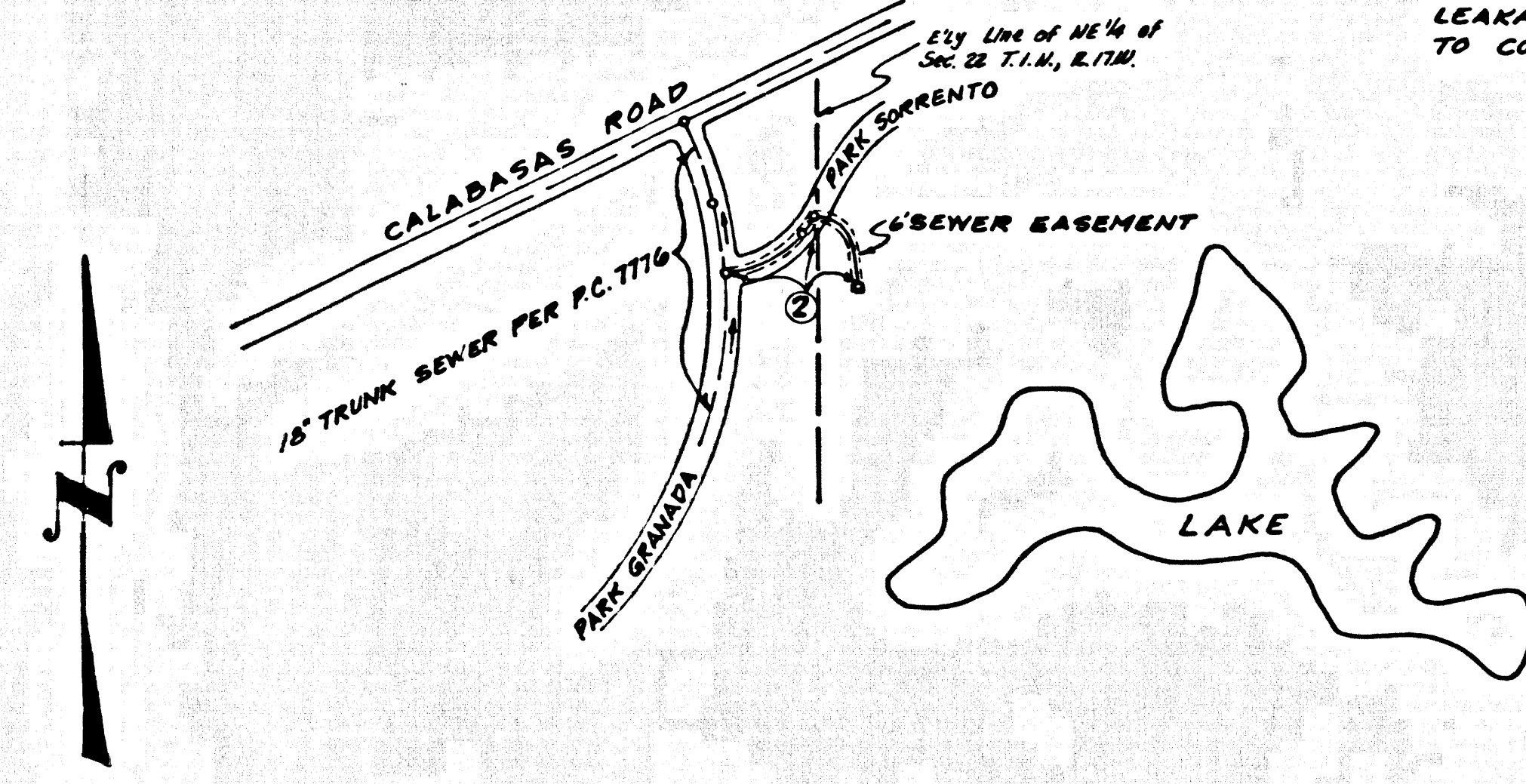
NOTE:
 GRADES TO WHICH THE IMPROVEMENT IS TO BE CONSTRUCTED ARE SHOWN ON PLANS AND PROFILE. GRADE POINTS FOR TOP OF CURBS, CENTER LINE OF STREETS, OR CENTER LINE OF ALLEYS ARE SHOWN BY CIRCLES ON PROFILE. AT ALL POINTS BETWEEN DESIGNATED POINTS THE GRADE SHALL BE ESTABLISHED SO AS TO CONFORM TO A STRAIGHT LINE DRAWN BETWEEN SAID DESIGNATED POINTS. ELEVATIONS ARE IN FEET ABOVE U.S.C. & G.S. MEAN LEVEL DATUM OF 1929.
 THIS DRAWING AND THE DATA HEREON ARE HEREBY MADE A PART OF THE SPECIFICATIONS.
 WORK SHALL BE CONSTRUCTED ACCORDING TO STANDARD SPECIFICATIONS BATED JULY 25, 1952, ON FILE IN THE OFFICE OF THE COUNTY ENGINEER AND SHALL BE PROSECUTED ONLY IN THE PRESENCE OF THE COUNTY ENGINEER.
 BEFORE WORK CAN BE STARTED, THE CONTRACTOR MUST OBTAIN A PERMIT TO EXCAVATE IN COUNTY STREETS FROM THE L.A. COUNTY ROAD DEPT., DISTRICT OFFICE NO. 7441.81, AND PAY A FEE TO THE COUNTY ENGINEER, ROOM 300, COUNTY ENGINEERING BUILDING, WEST SECOND STREET, LOS ANGELES, CALIFORNIA.
 APPROVAL OF THE PLAN BY THE COUNTY OF LOS ANGELES DOES NOT CONSTITUTE A REPRESENTATION AS TO THE ACCURACY OF THE LOCATION OR THE EXISTENCE OR NON-EXISTENCE OF ANY UNDERGROUND UTILITY PIPE, OR STRUCTURE WITHIN THE LIMITS OF THIS PROJECT. THIS NOTE APPLIES TO ALL PAGES.
 IF WORK IS TO BE DONE IN A STATE HIGHWAY, A PERMIT MUST BE OBTAINED FROM THE STATE OF CALIFORNIA, DIVISION OF HIGHWAYS, 120 SOUTH BRINK STREET, LOS ANGELES, CALIFORNIA.

COUNTY OF LOS ANGELES, CALIFORNIA
JOHN A. LAMBE, COUNTY ENGINEER
 APPROVED BY: *John A. Lambie*
 REGISTERED ENGINEER

LAS VIRGENES MUNICIPAL WATER DISTRICT
 APPROVED BY: *Wesley Stables*
 DISTRICT ENGINEER

CHECKED BY: *W. D. White*
 REG. C. E. NO. 2464

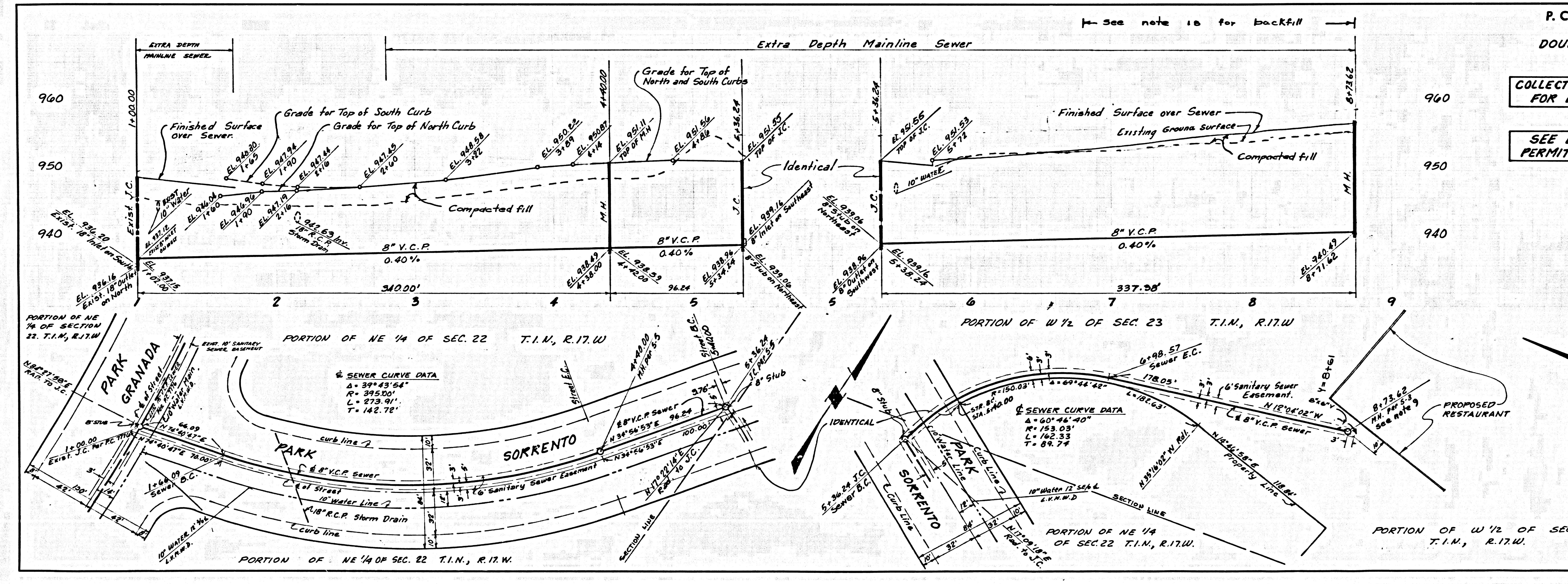
J. N. 0368.72



INDEX MAP
 SCALE 1"=600'
 P.C. 7954

REVIEWED BY
Margaret Cron
 1/4/68
 L.A. San. & Waste Insp.

**COLLECT CHARGES
 AS INDICATED**
Thomas S. Howard



P.C. 7954 PAGE 2
DOUBLE SCALE

**COLLECT NO CHARGES
 FOR L.A. COUNTY**

**SEE L.V.M.W.D. FOR
 PERMITS AND FEES**

39865