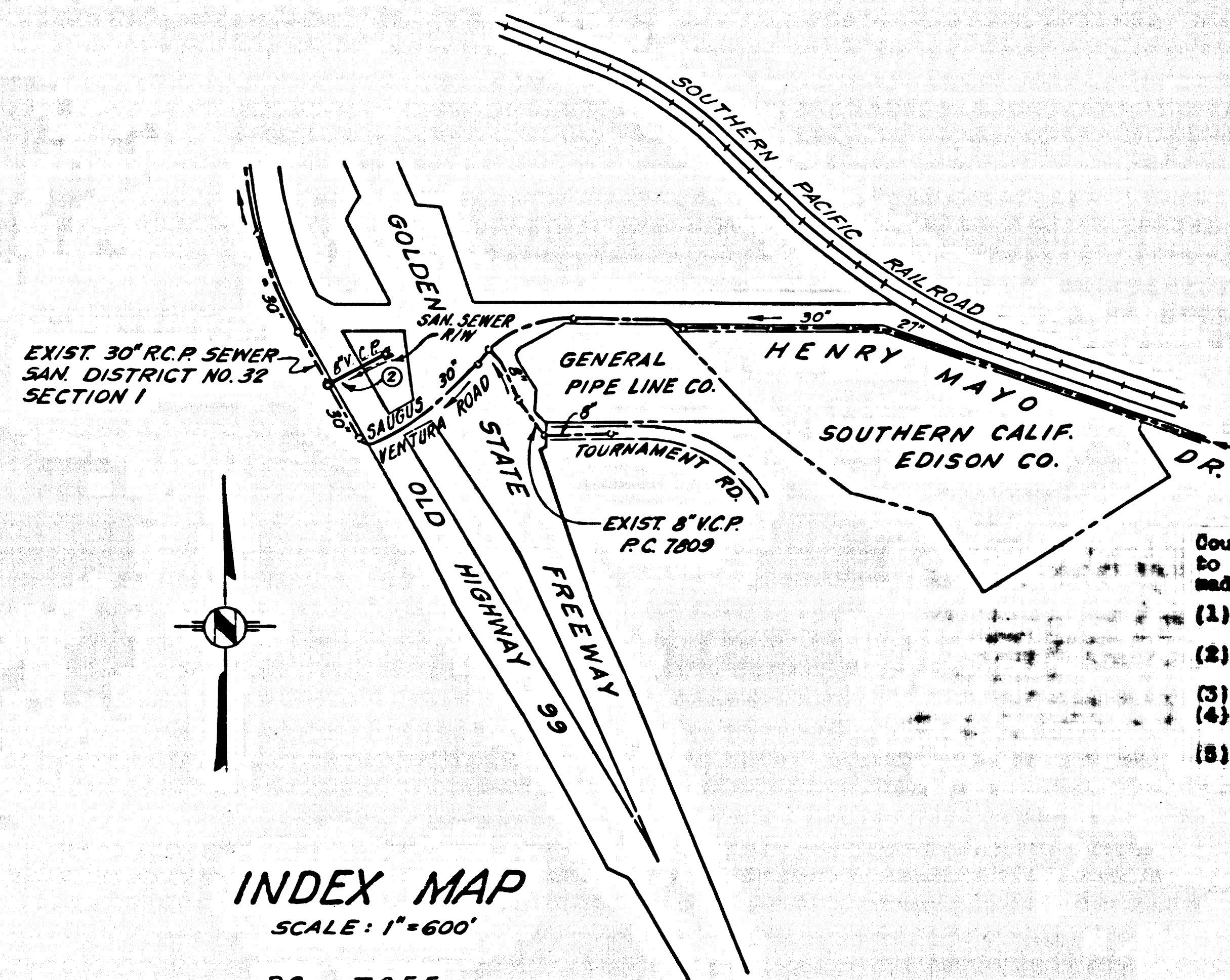


B.M. SL 1774 ELEV. 1078.163
 RD. 3" IN. DIA. 3 1/2" C.B. TRAFFIC
 ISLAND 45 FT. WID. OF 3 1/2" BARREL
 SAUGUS VENTURA RD. 5 TO FT.
 WLY OF FRWY. OR NO. 853-1626
 NEWHALL QUAD. 1938



INDEX MAP
 SCALE: 1"=600'
 P.C. 7955

County Sanitation Districts shall be notified prior to the following so that required inspection can be made (Phone: 337-1025):
 (1) Commencement of construction of Manhole on District trunk sewer.
 (2) Breaking into existing manhole on District trunk sewer.
 (3) Core drilling District trunk sewer.
 (4) Construction of house connections to District trunk sewer.
 (5) Acceptance of the project.

NEWHALL BLDG. DIST. NO. 8.2

- NOTES:
1. PROVIDE STAKES ON THE PROPERTY LINE OR PROPERTY LINES PRODUCED AT RIGHT ANGLES TO THE SEWER LINE AT THE CENTER LINE OF EACH MANHOLE.
 2. NO REPRESENTATIVE OF THE COUNTY ENGINEER WILL SERVISE OR LAY OUT ANY PORTION OF THE WORK.
 3. THE PRIVATE ENGINEER SHALL FURNISH THE COUNTY ENGINEER WITH GRADE SHEETS AND STATIONING FOR ALL HOUSE LATERALS AND "T" BRANCHES AND SHALL PROVIDE STAKES FOR THEM AT THEIR PROPER LOCATIONS WITH STATIONING PLAINLY MARKED. ALL HOUSE LATERALS SHALL BE CONSTRUCTED IN A STRAIGHT ALIGNMENT AT RIGHT ANGLES FROM THE MAIN LINE SEWER EXCEPT AS SHOWN ON THE PLANS. HOUSE-SANITATION MANHOLES SHALL BE CONSTRUCTED AT THE CORNER OF THE HOUSE. ANY CHANGE IN ALIGNMENT SHALL BE REQUESTED IN WRITING BY THE PRIVATE ENGINEER.
 4. THE PRIVATE ENGINEER SHALL FURNISH THE HOUSE LATERAL DEPTH AT THE PROPERTY LINE BELOW THE TOP OF CURB ELEVATION FOR EACH HOUSE LATERAL ON THE GRADE SHEET.
 5. NO REVISIONS SHALL BE MADE IN THESE PLANS WITHOUT THE APPROVAL OF THE COUNTY ENGINEER.
 6. THE CONTRACTOR SHALL NOTIFY THE CONSTRUCTION DIVISION BY TELEPHONE, MADISON 9-0707, EXT. 8151, AT LEAST TWENTY-FOUR HOURS BEFORE STARTING ANY WORK UNDER THIS CONTRACT.
 7. MANHOLES SHALL BE BRICK SEWER STRUCTURES PER 8-4 OF PRECAST CONCRETE MANHOLES PER 8-4 EXCEPT AS NOTED.
 8. USE STANDARD MANHOLE FRAMES AND COVERS, S-18, EXCEPT AS NOTED.
 9. MANHOLE TOPS IN UNIMPROVED RIGHTS-OF-WAY TO BE SIX INCHES ABOVE FINISHED GRADE.
 10. USE EXTRA STRENGTH PIPE. ALL PIPE IS STANDARD DEPTH EXCEPT AS NOTED.
 11. USE MECHANICAL COMPRESSION JOINTS FOR ALL V.C.P. JOINTS PER SPEC. SECS. 26, 28 & 29.
 12. IN A POWER POLE IS WITHIN THREE FEET OF THE SEWER, THE SEWER SHALL BE ENCASED, PER 8-23, TWO FEET ON EACH SIDE FROM THE POINT OF INTERFERENCE.
 13. DURING THE COURSE OF CONSTRUCTION IT IS DETERMINED THAT THERE IS LESS THAN FOUR FEET OF COVER OVER THE TOP OF A MAIN LINE OR HOUSE LATERAL V.C.P. SEWER WHICH IS NOT INDICATED ON THE PLANS, THE PIPE SHALL BE ENCASED PER 8-23, UNLESS OTHERWISE APPROVED BY THE COUNTY ENGINEER.
 14. HOUSE LATERALS TO BE CONSTRUCTED WITH INVERTS AT PROPERTY LINE 6 FEET BELOW CURB GRADE EXCEPT AS NOTED.
 15. RESURFACE ALL TRENCHES WITHIN PAVED AREAS TO MEET L.A. COUNTY ROAD DEPT. OR CALIFORNIA STATE HIGHWAY REQUIREMENTS IN ACCORDANCE WITH PERMITS.
 16. FOR HIGHWAY BRIDGE TEST USE FORMULA NO. 2, SPEC. 1, SEC. 5A.
 17. ALL STATE AND LOCAL TRINCH SAFETY CODES WILL BE STRICTLY ENFORCED.
 - 18-SPECIAL COMPACTION
 -18-1-BACKFILL-TRENCH AND REPLACE OTHER EARTH REMOVED SO AS TO RESTORE THE PRE-EXISTING GRADES AND SLOPES.
 -18-2-ALL BACKFILL AND EARTH REPLACED SHALL BE COMPACTED TO A MINIMUM OF 90% OF MAXIMUM DENSITY PER A.S.T.M. STANDARD METHOD OF TEST D-155-62 AS MODIFIED.
 -ACCEPTABLE CERTIFICATION OF SUCH COMPACTION SHALL BE SUBMITTED TO THE CONSTRUCTION DIVISION.
 -18-3-NO CONSTRUCTION IS PERMITTED IN FIELD AREAS WHERE THE RELATIVE DENSITY OF COMPACTION IS LESS THAN 90%.
 -18-4-IF THE RELATIVE DENSITY OF COMPACTION IS LESS THAN 90%, ALL MAIN LINE AND HOUSE LATERALS SHALL BE CRADLED PER 8-23 OR HAVE A SPECIAL BASE COURSE PER 8-21.
 -BASE 3X-SPECIAL MANHOLE BASE PER 8-14 ARE REQUIRED.

PROFILE, ALIGNMENT AND GRADE OF P.C. 7955
 SANITARY SEWERS PAGE 1
 TO SERVE
CALICO KITCHEN
 PRIVATE CONTRACT NO. 7955
 W.S. 63
 1 SHEETS, 2 PAGES
 SCALE: VERT. 1"=4' HORIZ. 1"=40'
 PREPARED IN THE OFFICES OF
QUINTON ENGINEERS, LTD.
 812 W. 8TH ST., LOS ANGELES, CALIF.
 REG. C. E. NO. 13005

FOR LEGEND SEE PLAN NO. S-1

NOTE:
 GRADES TO WHICH THE IMPROVEMENT IS TO BE CONSTRUCTED ARE SHOWN ON PLANS AND PROFILES. GRADE POINTS FOR TOP OF CURB, CENTER LINE OF STREETS, OR CENTER LINE OF ALLEYS ARE SHOWN BY CIRCLES ON PROFILES. AT ALL POINTS BETWEEN DESIGNATED POINTS THE GRADE SHALL BE ESTABLISHED SO AS TO CONFORM TO A STRAIGHT LINE DRAWN BETWEEN SAID DESIGNATED POINTS. ELEVATIONS ARE IN FEET ABOVE U.S.C. & G.S. SEA LEVEL DATUM OF 1929. THE DRAWING AND THE DATA HEREON ARE HEREBY MADE A PART OF THE SPECIFICATIONS. WORK SHALL BE CONSTRUCTED ACCORDING TO STANDARD SPECIFICATIONS DATED MAY 26, 1966, AS REVISED ON FILE IN THE OFFICE OF THE COUNTY ENGINEER AND SHALL BE PROSECUTED ONLY BY THE OFFICE OF THE COUNTY ENGINEER. BEFORE WORK CAN BE STARTED, THE CONTRACTOR MUST OBTAIN A PERMIT TO EXCAVATE IN COUNTY STREETS FROM THE L.A. COUNTY ROAD DEPT., DISTRICT OFFICE NO. 5, 100 WEST SECOND STREET, LOS ANGELES, CALIFORNIA. REGIONAL OFFICE, APPROXIMATE TO COVER THE COST OF CONSTRUCTION INSPECTION AND RECORD PLANS. APPROVAL OF THIS PLAN BY THE COUNTY OF LOS ANGELES DOES NOT CONSTITUTE A REPRESENTATION AS TO THE ACCURACY OF THE LOCATION OF OR THE EXISTENCE OR NON-EXISTENCE OF ANY UNDERGROUND UTILITY PIPE, OR STRUCTURE WITHIN THE LIMITS OF THE PROJECT. THIS NOTE APPLIES TO ALL PAGES. IF WORK IS TO BE DONE IN A STATE HIGHWAY, A PERMIT MUST BE OBTAINED FROM THE STATE OF CALIFORNIA, DIVISION OF HIGHWAY, 100 SOUTH SPRING STREET, LOS ANGELES, CALIFORNIA.

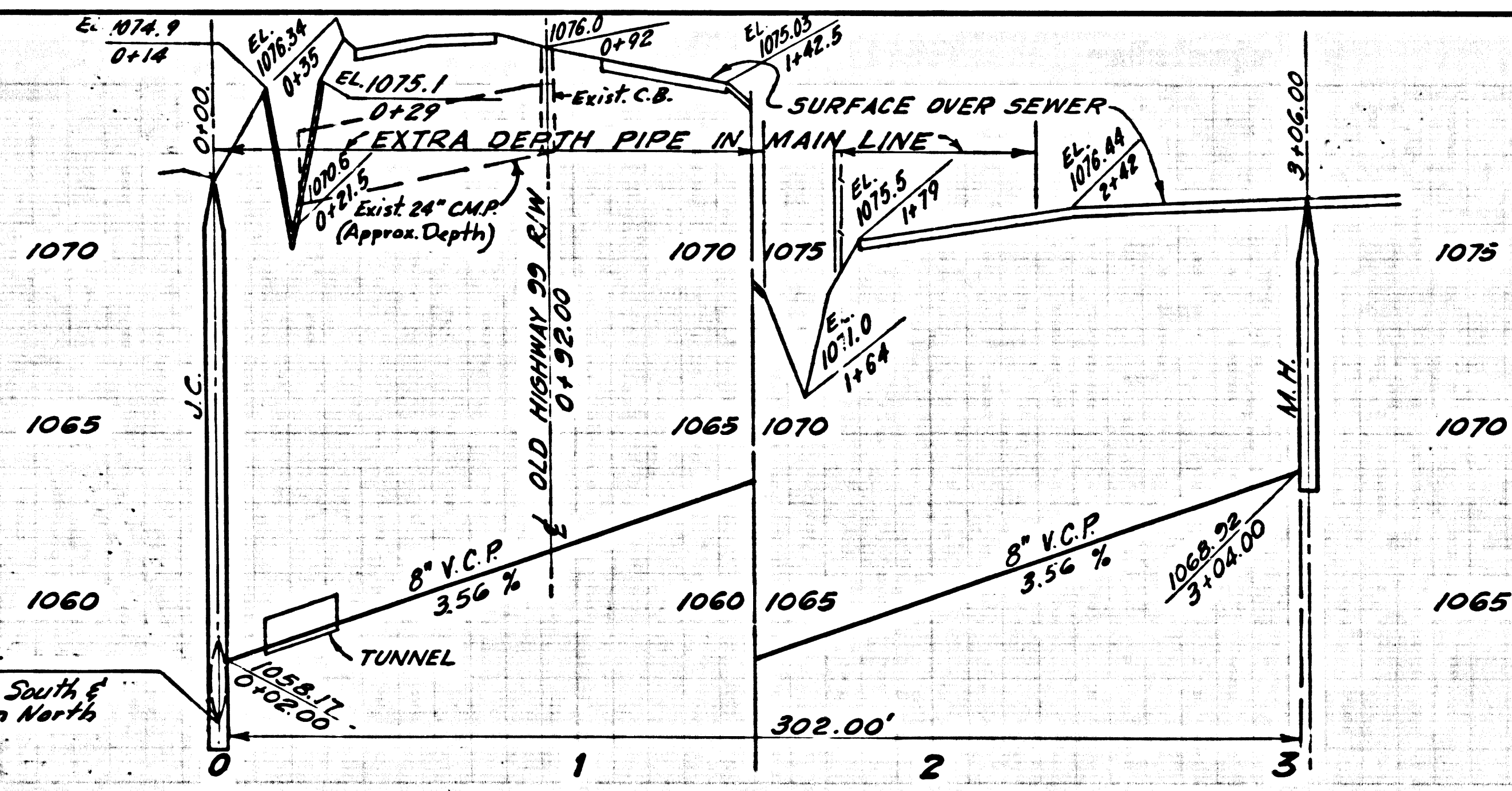
COUNTY OF LOS ANGELES, CALIFORNIA
 JOHN A. LAMBE, COUNTY ENGINEER J. D. PARKHURST, CHIEF ENGINEER
 CO. SAN. DIST. NO. 32
 APPROVED BY: *[Signature]* APPROVED BY: *[Signature]*
 REGIONAL ENGINEER OFFICE ENGINEER

CHECKED BY: *Ralph Schape 11/21/67*
 REG. C. E. NO. 13908

COLLECT CHARGES AS INDICATED
Gerald St. Kenny 11-7-67

NO CONNECTIONS FOR THE DISPOSAL OF INDUSTRIAL WASTEWATER SHALL BE MADE TO SEWERS SHOWN ON THESE DRAWINGS WITHOUT WRITTEN PERMISSION FROM THE CHIEF ENGINEER AND BEHOLDING MEMBERS OF THE COUNTY SANITATION DISTRICTS.

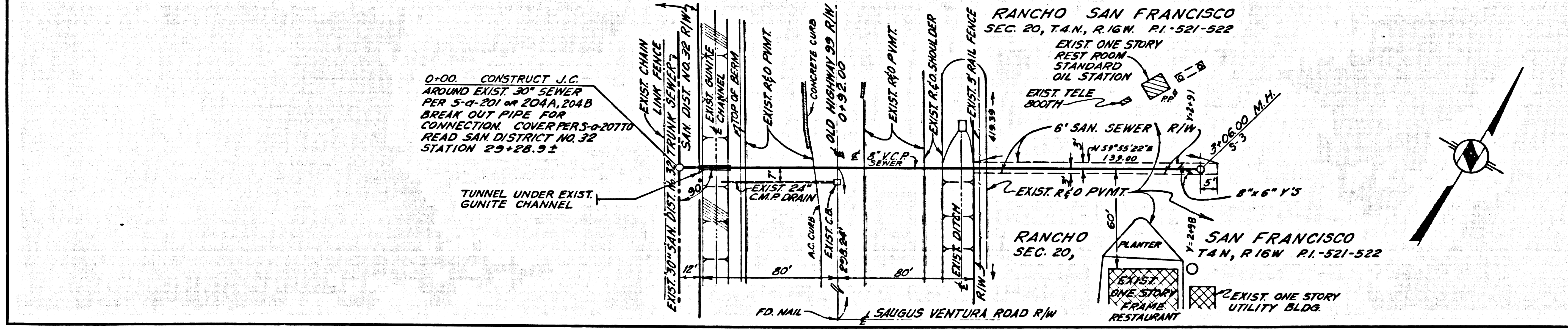
J. N. 0368.73



P. C. 7955 PAGE 2

NO CHARGE FOR CONNECTIONS

39580



L.A. CO. ROAD DEPT. REQUIREM'TS.
 THE GUNITE CHANNEL ON THE WEST OF THE RIGHT OF WAY SHALL BE TUNNELLED. PAVEMENT REPLACEMENT SHALL BE 4" OF TYPE 1 ASPHALT CONCRETE OVER 8" OF CRUSHED AGGREGATE BASE. THE REPAIR SHALL BE SEALED WITH RS-1 EMULSION AND NUMBER 5 ROCK.