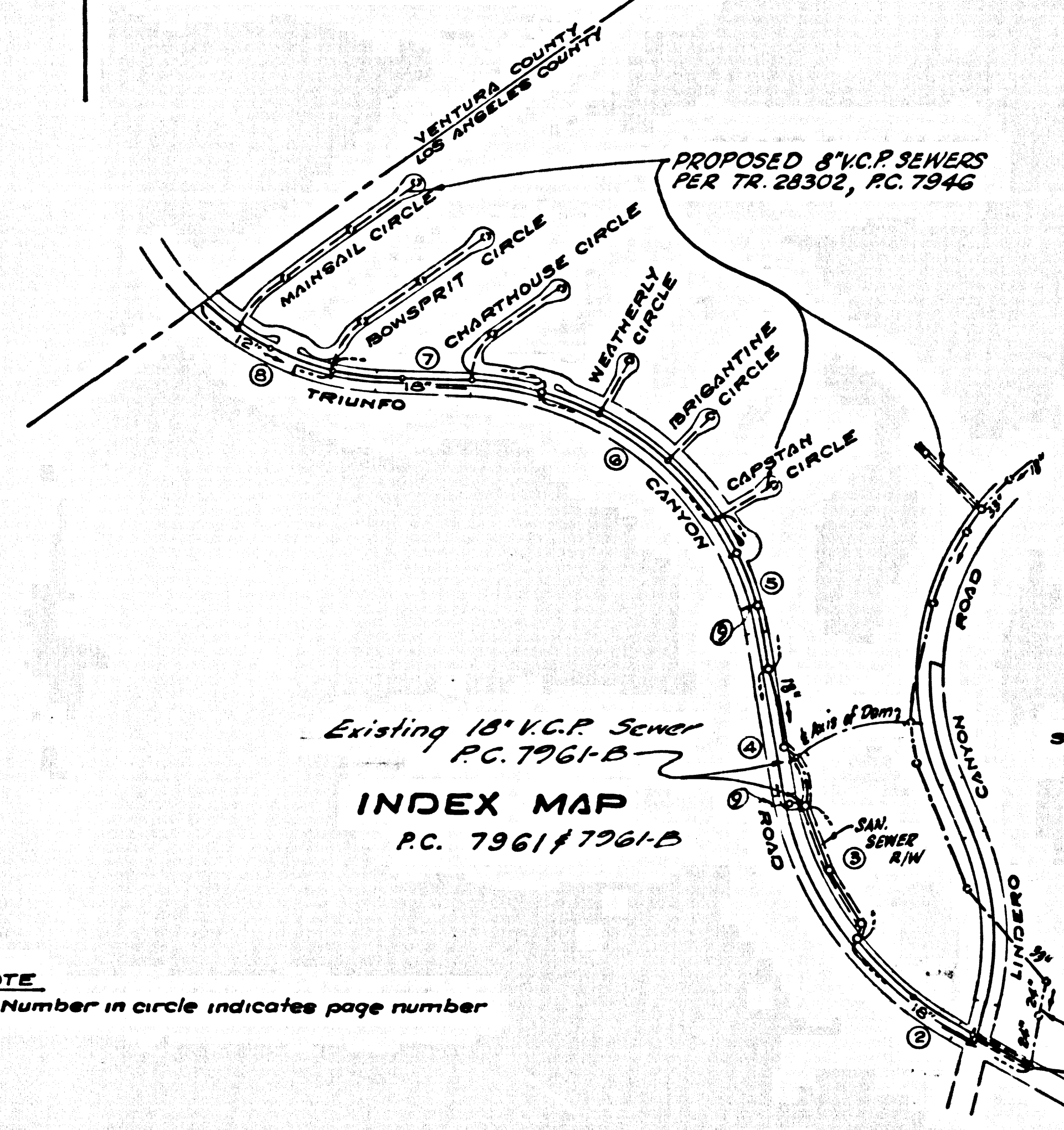


B.M. SY-5641 ELEV. 946.274  
 CHIS. 50 ON W. SIDE C. 8. (FROM INLET)  
 ON E. VENTURA BOULEVARD @  
 STA. 521+85 ± 3 MI. VV. CORNELL ROAD  
 MALIBU QUAD. 19 60



THE ACCURACY OF THE LOCATION OF OR THE EXISTENCE OR NON EXISTENCE OF ANY UTILITY PIPE OR STRUCTURE WITHIN THE LIMITS OF THIS PROJECT DOES NOT CONSTITUTE RESPONSIBILITY BY THE ENGINEER.

TESTING PER LAB VIRGENES MUNICIPAL WATER DISTRICT

1. INFILTRATION AND LEAKAGE TEST  
 METHOD USED FOR TESTING WILL BE THE SAME AS LOS ANGELES COUNTY EXCEPT THE FORMULA TO BE USED IS AS FOLLOWS:  
 0.033 GALLONS/MINUTE/INCH OF DIAMETER/1000 FEET OR 850 GALLONS/DAY/INCH OF DIAMETER/MILE.

2. MANHOLE LEAKAGE TEST  
 AT THE DISCRETION OF THE DISTRICT'S REPRESENTATIVE ONE MANHOLE OUT OF TEN MANHOLES AND A MINIMUM OF TWO WILL BE FILLED WITH WATER AND AFTER THREE HOURS WILL BE CHECKED FOR LEAKAGE WITH NO DROP IN LEVEL. FOR EVERY MANHOLE NOT PASSING THE TEST FIVE MORE WILL BE TESTED AT THE DISCRETION OF THE DISTRICT'S REPRESENTATIVE.

3. AIR TESTING  
 WHERE THE DIFFERENCE IN ELEVATION BETWEEN THE INVERT OF THE UPPER STRUCTURE AND THE INVERT OF THE LOWER STRUCTURE IS MORE THAN SIX (6) FEET AN AIR TEST WILL BE MADE. THE TIME TAKEN TO USE ONE (1) POUND PER SQUARE INCH GAUGE PRESSURE FROM THREE (3) POUNDS PER SQUARE INCH GAUGE PRESSURE TO TWO (2) POUNDS PER SQUARE INCH GAUGE PRESSURE SHALL NOT BE LESS THAN THREE TIMES SHOWN ON THE FOLLOWING TABLE:

MAIN PIPE DIAMETER	MINIMUM TIME LOSE
12"	1 MINUTE
18"	2 MINUTES
24"	3 MINUTES
30"	4 MINUTES

IF THE TIME IS LESS THAN LISTED IN THE TABLE ABOVE THE CONTRACTOR SHALL MAKE REPAIRS AS ARE NECESSARY TO ELIMINATE EXCESSIVE LEAKAGE.

SCALE 1" = 600'

REVISION Nov. 1, 1968  
 Add page 9 - Crossings of  
 Triunfo Canyon Road  
 Approved: *John K. Miller*  
 11/1/68 Office of County Engineer

DOUBLE SCALE  
 CALABASAS BLDG. DIST. NO. 9.1

- NOTES:
- PROVIDE STAKES ON THE PROPERTY LINE OR PROPERTY LINES PRODUCED AT RIGHT ANGLES TO THE SEWER LINE AT THE CENTER LINE OF EACH MANHOLE.
  - NO REPRESENTATIVE OF THE COUNTY ENGINEER WILL SURVEY OR LAY OUT ANY PORTION OF THE WORK.
  - THE PRIVATE ENGINEER SHALL FURNISH THE COUNTY ENGINEER WITH GRADE SHEETS AND STATIONING FOR ALL HOUSE LATERALS AND "T" BRANCHES AND SHALL PROVIDE STAKES FOR THEM AT THEIR PROPER LOCATIONS WITH STATIONING PLAINLY MARKED. ALL HOUSE LATERALS SHALL BE CONSTRUCTED IN A STRAIGHT ALIGNMENT AT RIGHT ANGLES FROM THE MAIN LINE SEWER EXCEPT AS SHOWN ON THE PLANS. HOUSE LATERALS FROM CHIMNEYS SHALL NOT HAVE AN ANGLE OF LESS THAN 45° WITH THE MAIN LINE SEWER. ANY CHANGE IN ALIGNMENT SHALL BE REQUESTED IN WRITING BY THE PRIVATE ENGINEER.
  - THE PRIVATE ENGINEER SHALL FURNISH THE HOUSE LATERAL DEPTH AT THE PROPERTY LINE BELOW THE TOP OF CURB ELEVATION FOR EACH HOUSE LATERAL ON THE GRADE SHEET.
  - NO REVISIONS SHALL BE MADE IN THESE PLANS WITHOUT THE APPROVAL OF THE COUNTY ENGINEER.
  - THE CONTRACTOR SHALL NOTIFY THE CONSTRUCTION DIVISION BY TELEPHONE, MADISON 9-272, EXT. 81531, AT LEAST TWENTY-FOUR HOURS BEFORE STARTING ANY WORK UNDER THIS CONTRACT.
  - ALL STRUCTURES SHALL BE EITHER BRICK MANHOLES PER 9-23 OR PRECAST CONCRETE MANHOLES PER 9-23 OR 9-24 EXCEPT AS NOTED. 9" MANHOLES SHALL HAVE 12" BRICKWORK BELOW 8 FEET DEPTH.
  - USE STANDARD MANHOLE FRAMES AND COVERS, S.I.E. EXCEPT AS NOTED.
  - MANHOLE TOPS IN UNIMPROVED RIGHTS-OF-WAY TO BE SIX INCHES ABOVE FINISHED GRADE.
  - USE EXTRA STRENGTH PIPE. ALL PIPE IS STANDARD DEPTH EXCEPT AS NOTED.
  - USE MECHANICAL COMPRESSION JOINTS FOR ALL V.C.P. JOINTS PER SPEC., SECS. 36, 48 & 49.
  - IF A POWER POLE IS WITHIN THREE FEET OF THE SEWER, THE SEWER SHALL BE ENCASED, PER 9-23, TWO FEET ON EACH SIDE FROM THE POINT OF INTERFERENCE.
  - IF DURING THE COURSE OF CONSTRUCTION IT IS DETERMINED THAT THERE IS LESS THAN FOUR FEET OF COVER OVER THE TOP OF A MAIN LINE OR HOUSE LATERAL V.C.P. SEWER WHICH IS NOT INDICATED ON THE PLANS, THE PIPE SHALL BE ENCASED PER 9-23, UNLESS OTHERWISE APPROVED BY THE COUNTY ENGINEER.
  - HOUSE LATERALS TO BE CONSTRUCTED WITH INVERTS AT PROPERTY LINES & FEET BELOW CURB GRADE EXCEPT AS NOTED.
  - RESURFACE ALL TRENCHES WITHIN PAVED AREAS TO MEET L.A. COUNTY ROAD DEPT. OR CALIFORNIA STATE HIGHWAY REQUIREMENTS IN ACCORDANCE WITH PERMITS.
  - FOR ALLOWABLE LEAKAGE TEST. SEE NOTE AT LEFT.
  - ALL STATE AND LOCAL TRENCH SAFETY ORDERS WILL BE STRICTLY ENFORCED.
  - WHERE DUTY OF MAIN LINE IS MORE THAN 20 FEET, PIPE SHALL BE CRADLED, PER 9-23, AS SHOWN ON PLANS. IF WIDTH OF TRENCH AT TOP OF PIPE EXCEEDS 4 FEET, FOR DEPTHS OF MORE THAN 20 FEET THE PIPE SHALL BE ENCASED, PER 9-23, INSTEAD OF CRADLED. THE PRECEDING APPLIES TO 18" V.C.P. WHICH SHALL BE ENCASED WHEN TRENCH WIDTH EXCEEDS 3 1/2 FEET.
  - SPECIAL BACKFILL IN DESIGNATED AREAS:  
 (A) SPECIAL TRENCH AND REPLACE OTHER EARTH REMOVED SO AS TO ACHIEVE THE NATURAL OR FINISHED GRADES AND SLOPES SHOWN ON THE GRADING PLAN APPROVED FOR THIS TRACT BY THE BUILDING AND SAFETY DIVISION.  
 (B) ALL BACKFILL AND BARTH REPLACED SHALL BE COMPACTED TO A MINIMUM OF 90% OF MAXIMUM DENSITY PER A.S.T.M. STANDARD METHOD OF TEST D-958-57 AS MODIFIED. ACCEPTABLE CERTIFICATION OF SUCH COMPACTION SHALL BE SUBMITTED TO THE CONSTRUCTION DIVISION.

COLLECT CHARGES AS INDICATED  
*Revised Oct. 21, 67*

NOTE: ROCK MAY BE ENCOUNTERED BELOW THE NATURAL GROUND SURFACE IN ALL OR PORTIONS OF TRIUNFO CANYON ROAD.

PROFILE, ALIGNMENT AND GRADE OF  
 SANITARY SEWERS PAGE 1  
 TO BE CONSTRUCTED IN

TRIUNFO CANYON ROAD  
 (OUTLET FOR TRACT 28302)

PRIVATE CONTRACT NO. 7961 & 7961 B  
 W.S. 33

SCALE: VERT. 1" = 5' HORIZ. 1" = 40'

SEPTEMBER, 1967

PREPARED IN THE OFFICES OF  
 MCINTIRE & QUIROS INC.  
 670 BORTNEY PASS ROAD BORTNEY PARK, CALIFORNIA

FOR LEGEND SEE PLAN NO. S-1

NOTE: GRADES TO WHICH THIS IMPROVEMENT IS TO BE CONSTRUCTED ARE SHOWN ON PLANS AND PROFILES. GRADE POINTS FOR TOP OF CURBS, CENTER LINE OF STREETS, OR CENTER LINE OF ALLEYS ARE SHOWN BY CIRCLES ON PROFILES. AT ALL POINTS BETWEEN DESIGNATED POINTS THE GRADE SHALL BE ESTABLISHED SO AS TO CONFORM TO A STRAIGHT LINE DRAWN BETWEEN SAID DESIGNATED POINTS. REVISIONS ARE IN PENCIL ABOVE U.S.C. & G.S. 844 LITERATURE DATED IN 1957.

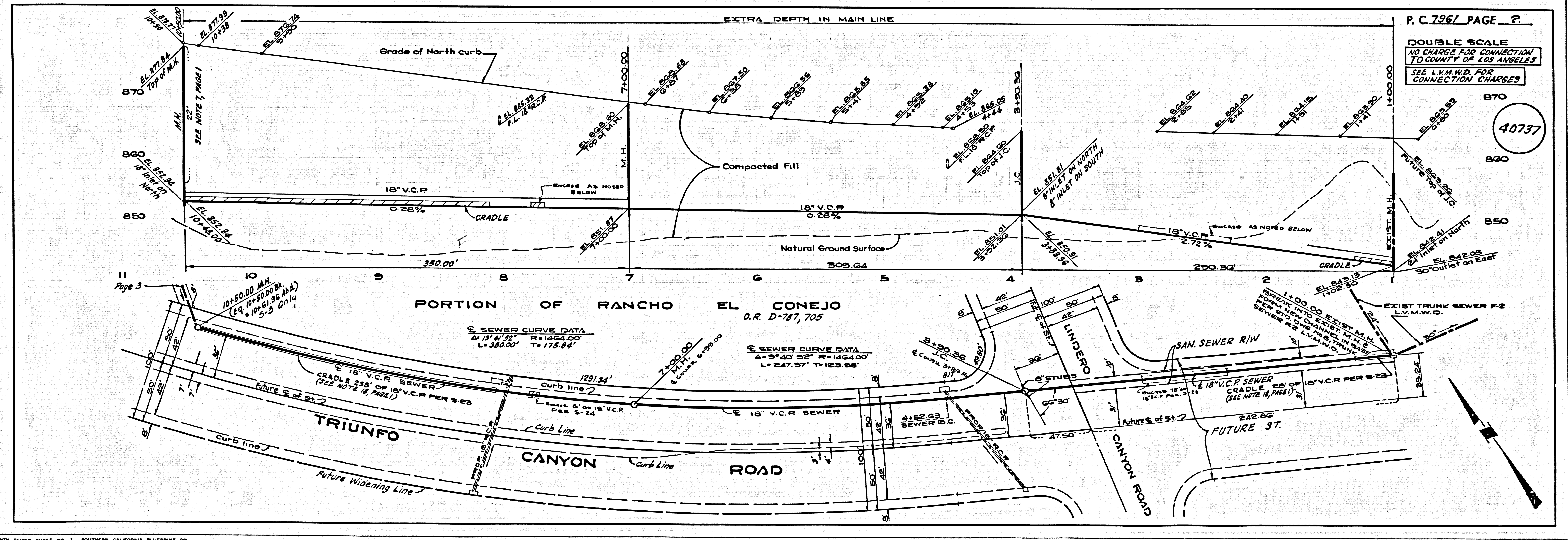
THIS DRAWING AND THE DATA HEREON ARE HEREBY MADE A PART OF THE SPECIFICATIONS. BEFORE WORK CAN BE STARTED THE CONTRACTOR MUST OBTAIN A PERMIT TO EXCAVATE IN COUNTY EMBANKMENTS FROM THE L.A. COUNTY ROAD DEPT., DISTRICT OFFICE NO. 3, AND PAY A FEE TO THE COUNTY ENGINEER, ROOM 380, COUNTY ENGINEERING BUILDING, 120 WEST SECOND STREET, LOS ANGELES, CALIFORNIA. APPROVAL OF THIS PLAN BY THE COUNTY OF LOS ANGELES DOES NOT CONSTITUTE A REPRESENTATION AS TO THE ACCURACY OF THE LOCATION OF OR THE EXISTENCE OR NON EXISTENCE OF ANY UNDERGROUND UTILITY PIPE, OR STRUCTURE WITHIN THE LIMITS OF THIS PROJECT. THIS NOTE APPLIES TO ALL PAGES.

IF WORK IS TO BE DONE IN A STATE HIGHWAY, A PERMIT MUST BE OBTAINED FROM THE STATE OF CALIFORNIA, DIVISION OF HIGHWAYS, 128 SOUTH SPRING STREET, LOS ANGELES, CALIFORNIA.

COUNTY OF LOS ANGELES, CALIFORNIA  
 JOHN A. LAMBIE, COUNTY ENGINEER  
 APPROVED BY: *Robert J. Miller* REGIONAL ENGINEER  
 APPROVED BY: *John K. Miller* GENERAL MGR./CHIEF ENGINEER

CHECKED BY: *Bernard J. Valdez* 2/1/68  
 REG. CE NO. 10523

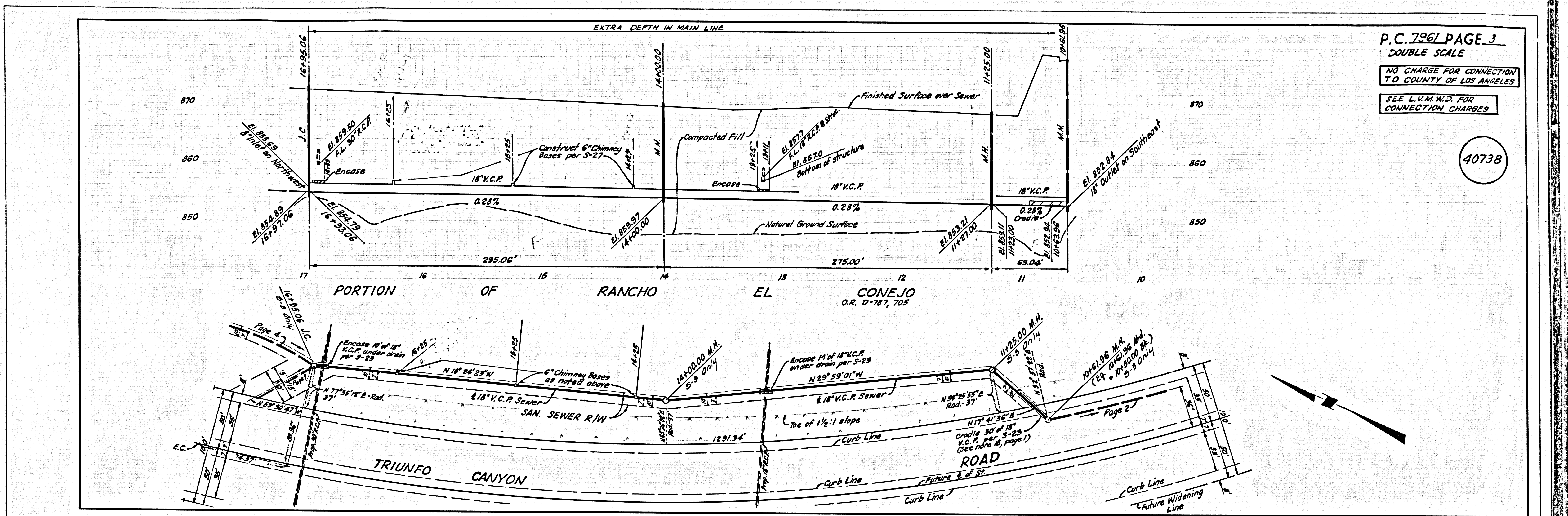
J.N. 036876



P.C. 7961 PAGE 2

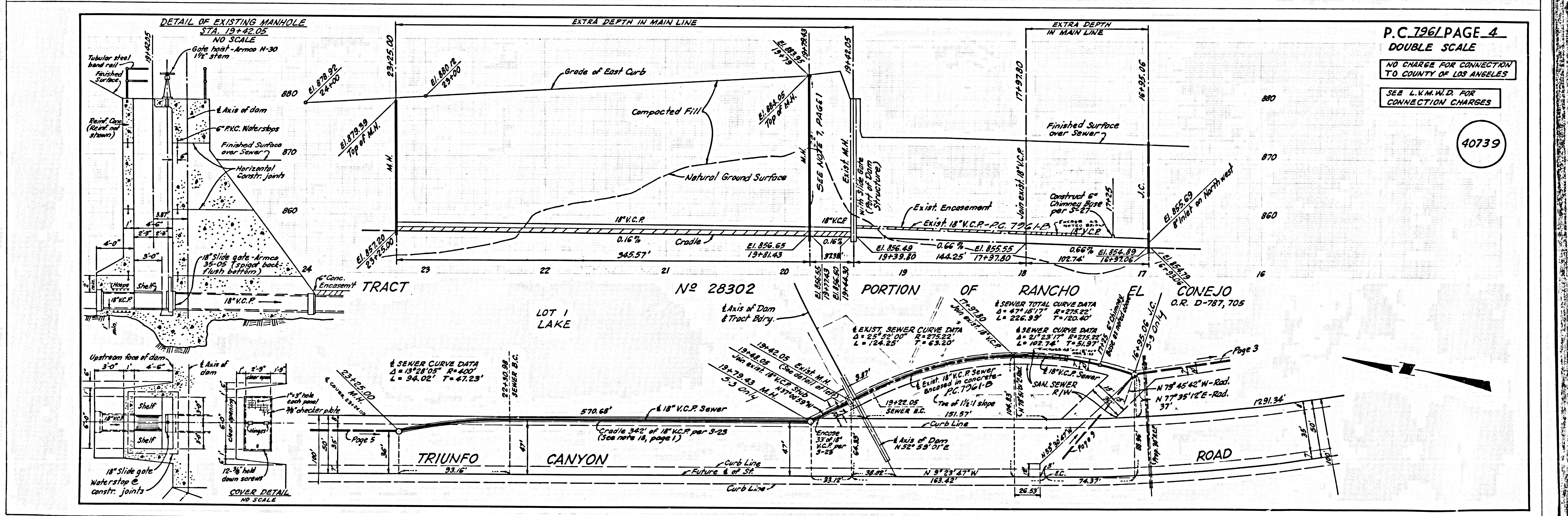
DOUBLE SCALE  
 NO CHARGE FOR CONNECTION TO COUNTY OF LOS ANGELES  
 SEE L.V.M.W.D. FOR CONNECTION CHARGES

40737



P.C. 1961 PAGE 3  
 DOUBLE SCALE  
 NO CHARGE FOR CONNECTION  
 TO COUNTY OF LOS ANGELES  
 SEE L.V.M.W.D. FOR  
 CONNECTION CHARGES

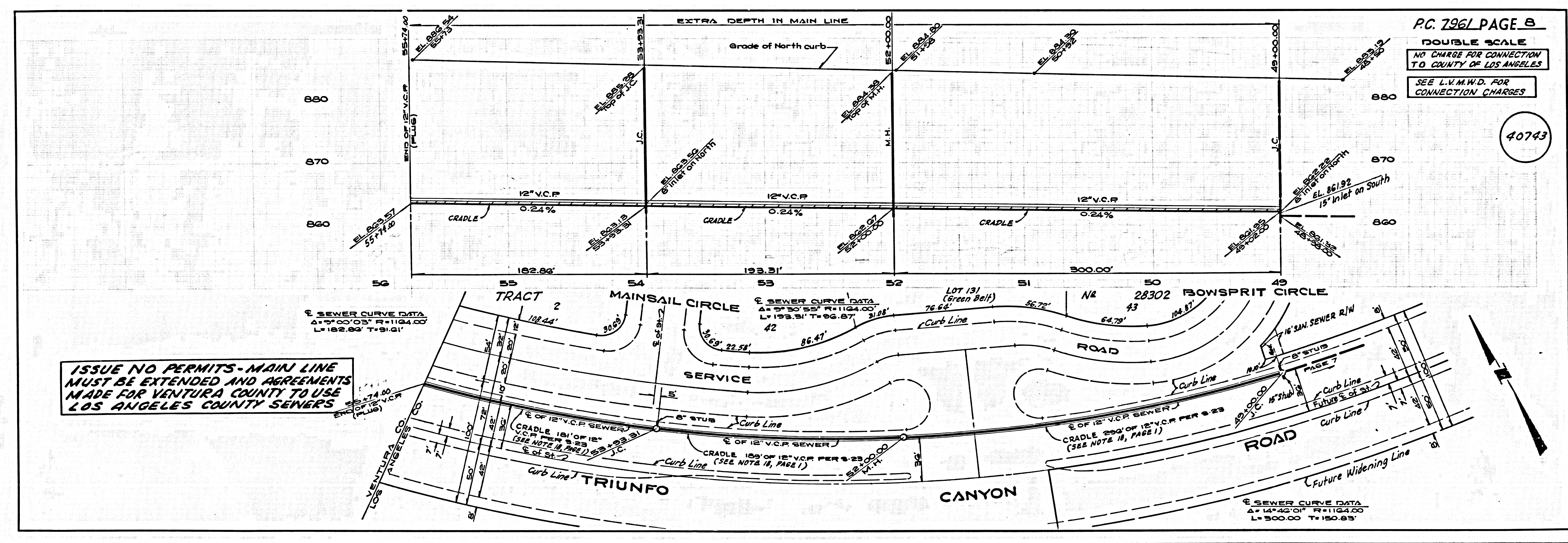
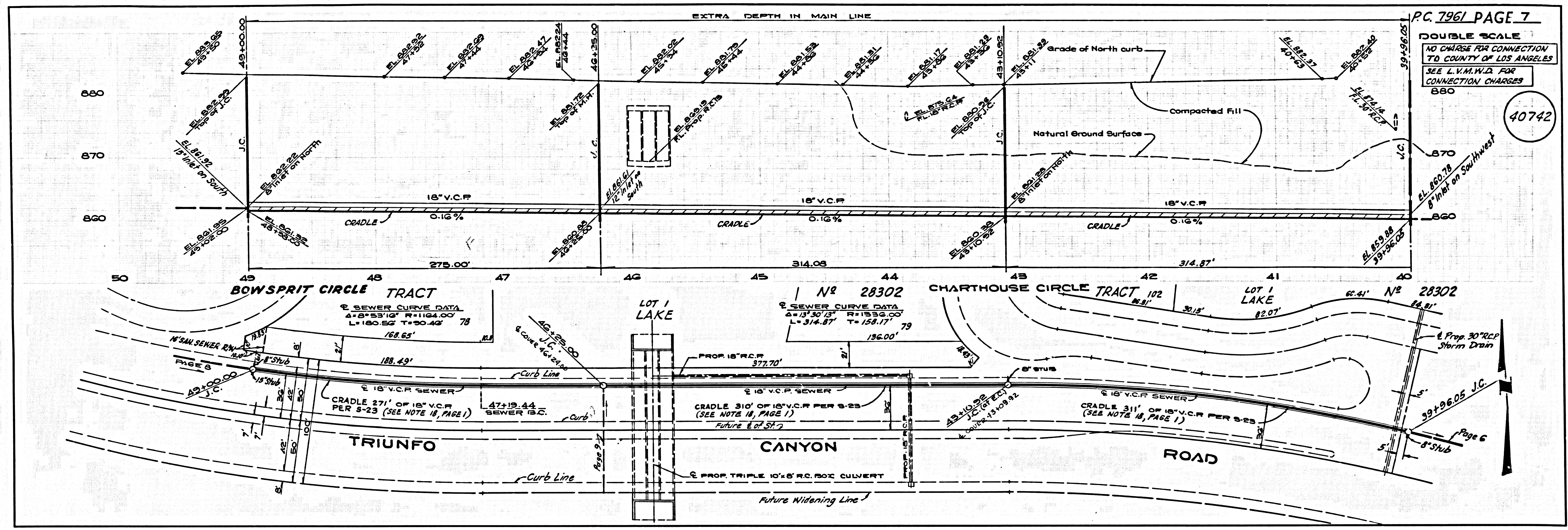
40738



P.C. 1961 PAGE 4  
 DOUBLE SCALE  
 NO CHARGE FOR CONNECTION  
 TO COUNTY OF LOS ANGELES  
 SEE L.V.M.W.D. FOR  
 CONNECTION CHARGES

40739





**ISSUE NO PERMITS - MAIN LINE MUST BE EXTENDED AND AGREEMENTS MADE FOR VENTURA COUNTY TO USE LOS ANGELES COUNTY SEWERS**

