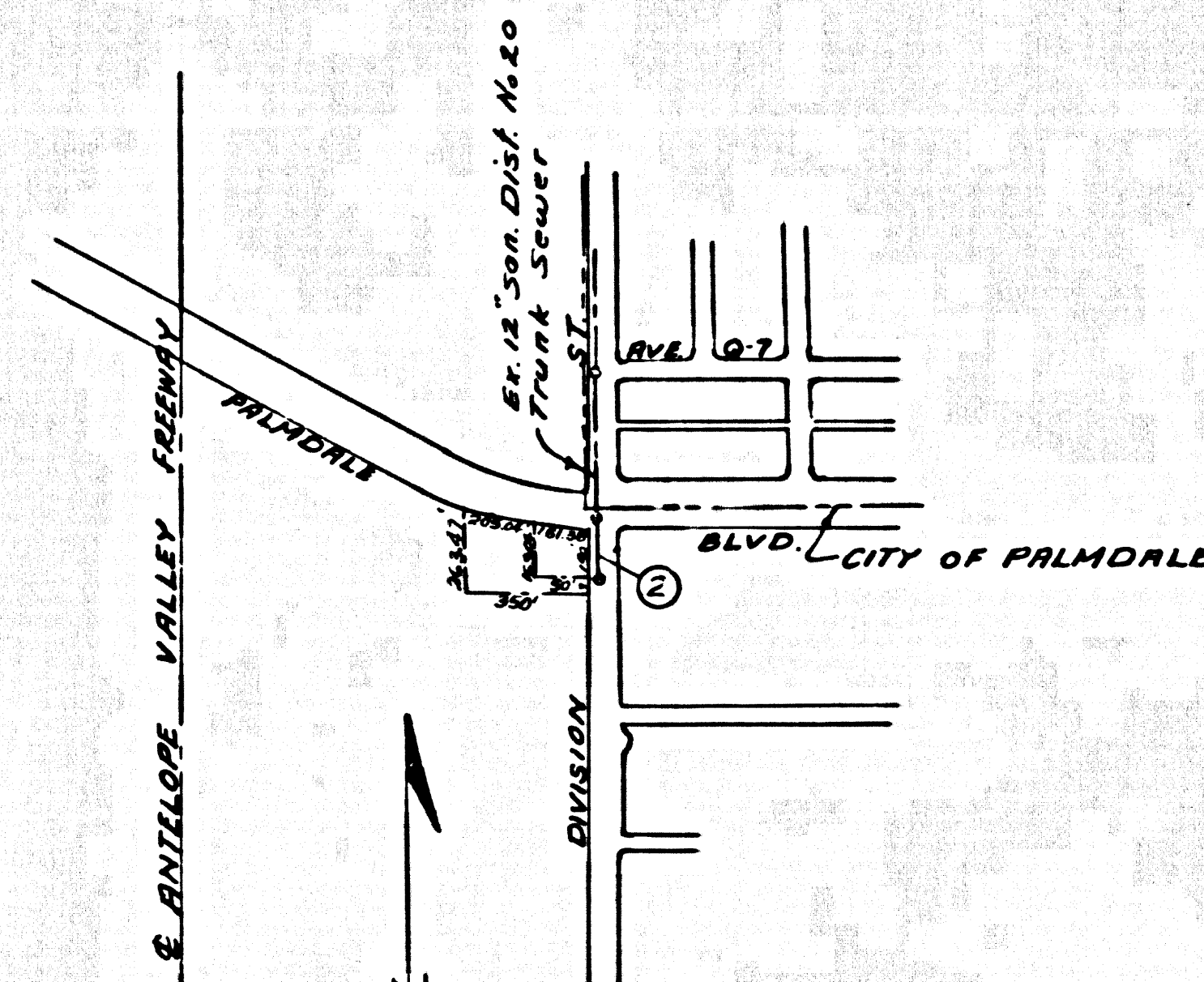


B.M. 54 111 ELEV. 2682.224  
 Let S. curb of N. Service Road Palmdale  
 Blvd. 70' E/O E. Division St. 45' N/O S.  
 Palmdale Blvd.  
 PALMDALE QUAD. 1955



INDEX MAP  
 Scale 1"=600'  
 PC. 7962

PALMDALE BLDG. DIST. NO. 8.01

PROFILE ALIGNMENT AND GRADE OF  
 SANITARY SEWERS P.C. 7962  
 TO BE CONSTRUCTED IN  
 DIVISION STREET PAGE 1

PRIVATE CONTRACT NO. 7962

W.S. 65

1 SHEETS; 2 PAGES

SCALE: VERT. 1"=4' OCTOBER, 1967

HORIZ. 1"=40'

PREPARED IN THE OFFICES OF

ARGUS ENGINEERING & SURVEY CO. INC.

15448 VENTURA BLVD.

SHERMAN OAKS, CALIFORNIA

BY: Harold J. [Signature] REG. C.E. NO. 11285

FOR LEGEND SEE PLAN NO. S-1

39428

- NOTES:
1. PROFILE STAKES ON THE PROPERTY LINE OR PROPERTY LINES PRODUCED AT RIGHT ANGLES TO THE SEWER LINE AT THE CENTER LINE OF EACH MANHOLE.
  2. NO REPRESENTATIVE OF THE COUNTY ENGINEER WILL SURVEY OR LAY OUT ANY PORTION OF THE WORK.
  3. THE PRIVATE ENGINEER SHALL FURNISH THE COUNTY ENGINEER WITH GRADE SHEETS AND STATIONING FOR ALL HOUSE LATERALS AND "T" OR "Y" BRANCHES AND SHALL PROVIDE STAKES FOR THEM AT THEIR PROPER LOCATIONS WITH STATIONING PLAINLY MARKED. ALL HOUSE LATERALS SHALL BE CONSTRUCTED IN A STRAIGHT ALIGNMENT AT RIGHT ANGLES FROM THE MAIN LINE SEWER ON THE PLANS.
  4. ANY CHANGE IN ALIGNMENT SHALL BE REQUESTED IN WRITING BY THE PRIVATE ENGINEER.
  5. THE PRIVATE ENGINEER SHALL FURNISH THE HOUSE LATERAL DEPTH AT THE PROPERTY LINE BELOW THE TOP OF CURB ELEVATION FOR EACH HOUSE LATERAL ON THE GRADE SHEET.
  6. NO REVISIONS SHALL BE MADE IN THESE PLANS WITHOUT THE APPROVAL OF THE COUNTY ENGINEER.
  7. THE CONTRACTOR SHALL NOTIFY THE CONSTRUCTION DIVISION BY TELEPHONE, MADISON 9-6747, EXT. 8151, AT LEAST TWENTY-FOUR HOURS BEFORE STARTING ANY WORK UNDER THIS CONTRACT.
  8. ALL STRUCTURES SHALL BE EITHER BRICK MANHOLES PER S-3 OR PRECAST CONCRETE MANHOLES PER S-3 OR S-4, EXCEPT AS NOTED.
  9. USE STANDARD MANHOLE FRAMES AND COVERS, S-16.
  10. MANHOLES TOPS IN UNIMPROVED AREAS SHALL BE SIX INCHES ABOVE FINISHED GRADE.
  11. USE EXTRA STRENGTH PIPE, ALL PIPE IS STANDARD DEPTH EXCEPT AS NOTED.
  12. USE MECHANICAL COMPRESSION JOINTS FOR ALL V.C.P. JOINTS PER SPEC.
  13. IF A POWER POLE IS WITHIN THREE FEET OF THE SEWER, THE SEWER SHALL BE ENCASED, PER S-23, TWO FEET ON EACH SIDE FROM THE POINT OF INTERFERENCE.
  14. IF DURING THE COURSE OF CONSTRUCTION IT IS DETERMINED THAT THERE IS LESS THAN FOUR FEET OF COVER OVER THE TOP OF A MAIN LINE OR HOUSE LATERAL V.C.P. SEWER WHICH IS NOT INDICATED ON THE PLANS, THE PIPE SHALL BE ENCASED PER S-23, UNLESS OTHERWISE APPROVED BY THE COUNTY ENGINEER.
  15. HOUSE LATERALS TO BE CONSTRUCTED WITH INVERTS AT PROPERTY LINE 4 FEET BELOW CURB GRADE.
  16. RESURFACE ALL TRENCHES WITHIN PAVED AREAS TO MEET L.A. COUNTY ROAD DEPT. OR CALIFORNIA STATE HIGHWAY REQUIREMENTS IN ACCORDANCE WITH PERMITS.
  17. FOR ALLOWABLE LEAKAGE TEST USE FORMULA NO. 2 SPEC'S SEC. 54.
  18. ALL STATE AND LOCAL TRENCH SAFETY ORDERS WILL BE STRICTLY ENFORCED.
  19. SPECIAL REGULATIONS IN DESIGNATED AREAS:
    - (a) MANHOLE REVISION AND REPLACE OTHER DATA REMOVED TO AS TO ACHIEVE THE MANHOLE OR FINISHED GRADES AND SHOWN ON THE GRADING PLAN APPROVED FOR THIS TRACT BY THE BUILDING AND SAFETY DIVISION.
    - (b) ALL SAGGING AND BARRIERS SHALL BE COMPLETED TO A MINIMUM OF 10% OF MAXIMUM DEPTH FOR A 12" V.C.P. MANHOLE OR SET ASBESTE AC-CROHMER. ACCEPTABLE CERTIFICATION OF SUCH CONNECTION SHALL BE SUBMITTED TO THE CONSTRUCTION DIVISION.

County Sanitation Districts shall be notified prior to the following so that required inspection can be made (Phone: 337-1025):

- (1) Commencement of construction of manhole on District of trunk sewer.
- (2) Breaking into existing manhole on District trunk sewer.
- (3) Core drilling District trunk sewer.
- (4) Construction of house connections to District trunk sewer.
- (5) Acceptance of the project.

CONTRACTOR SHALL VERIFY ELEVATION OF EXISTING J.C. AT STA. 1+00.00 PRIOR TO CONSTRUCTION

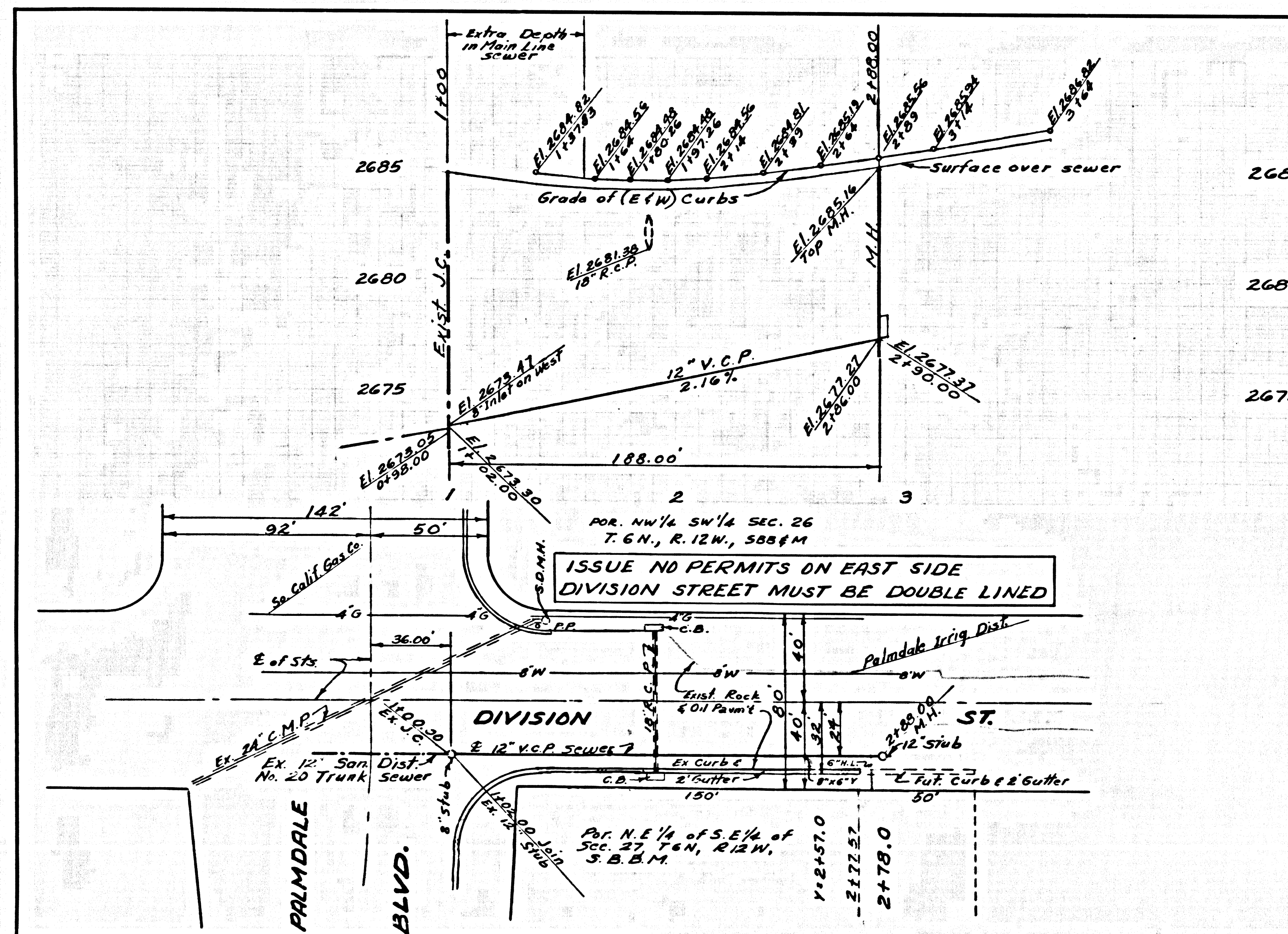
REVIEWED INDUSTRIAL WASTE DIVISION

[Signature]

COLLECT CHARGES AS INDICATED

[Signature]

NO CONNECTIONS FOR THE DISPOSAL OF INDUSTRIAL WASTES SHALL BE MADE TO SEWERS SHOWN ON THESE DRAWINGS WITHOUT WRITTEN PERMISSION FROM THE CHIEF ENGINEER AND GENERAL MANAGER OF THE COUNTY SANITATION DISTRICTS.



P.C. 7962 PAGE 2  
 NO CHARGE FOR CONNECTIONS

39429