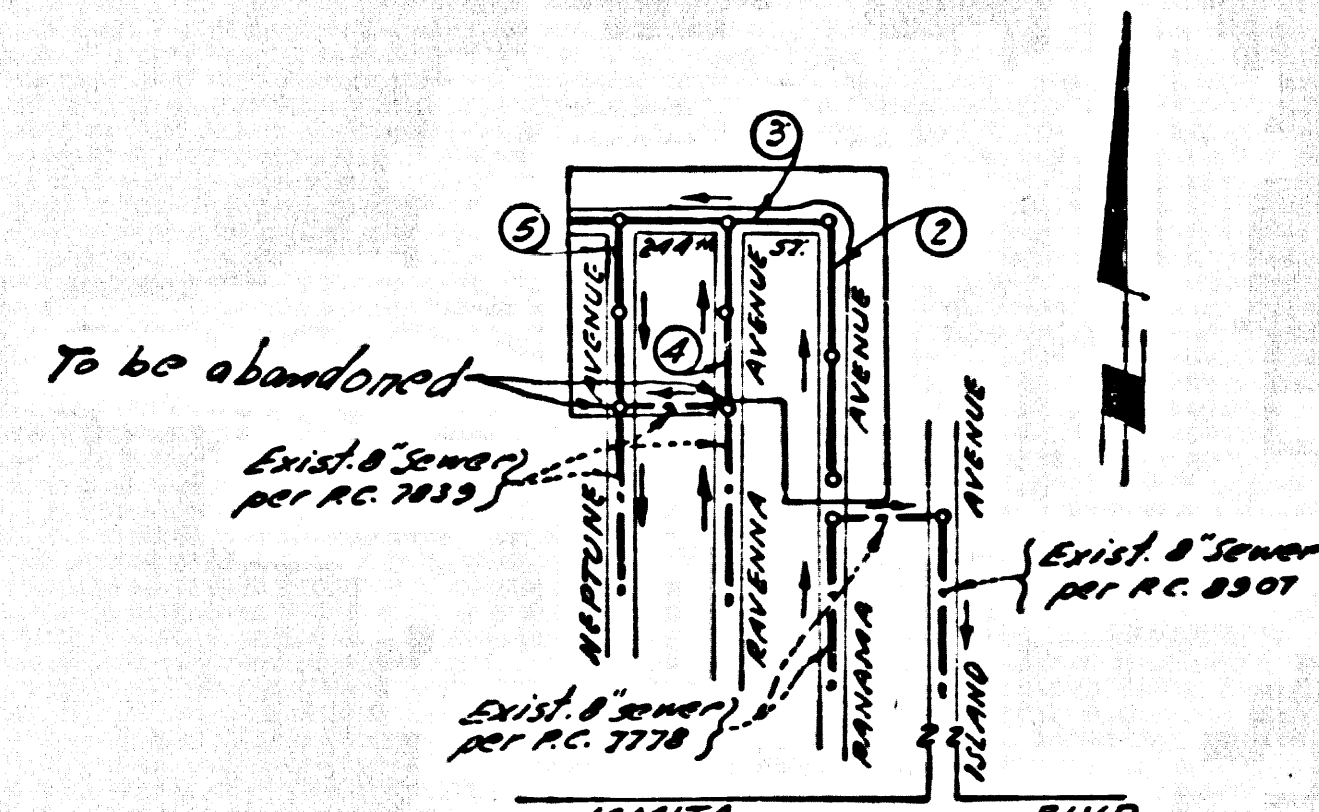


B.M. 57-3093-A ELEV. 42.810
 Pt. Spk. of L.M.C.B. Marina Avenue
 1.34' So. of Lomita Blvd. 3' 4"
 So. of end of curb
 GARDENA QUAD. 19 23



LOMITA BLVD.
 INDEX MAP
 TRACT NO 28564
 P.C. 7965
 Scale 1"=200'

NO CONNECTIONS FOR THE DISPOSAL OF INDUSTRIAL WASTES SHALL BE MADE TO SEWERS SHOWN ON THESE DRAWINGS WITHOUT WRITTEN PERMISSION FROM THE CHIEF ENGINEER AND GENERAL MANAGER OF THE COUNTY SANITATION DISTRICTS.

County Sanitation Districts shall be notified prior to the following so that required inspection can be made (Refs: G36-3097)

- (1) Commencement of construction of manhole on District trunk sewer.
- (2) Breaking into existing manhole on District trunk sewer.
- (3) Core drilling District trunk sewer.
- (4) Construction of base connections to District trunk sewer.
- (5) Acceptance of the project.

LOMITA BLDG. DIST. NO. 12

PROFILE, ALIGNMENT AND GRADE OF
 SANITARY SEWERS PAGE 1

TRACT No 28564

PRIVATE CONTRACT NO. 7965

W.S. 28

3 SHEETS, 5 PAGES

SCALE: HORIZ. 1"=40' VERT. 1"=4' September, 1967

39636

PREPARED IN THE OFFICES OF

E.L. PEARSON AND ASSOCIATES

By: Paul H. Beyer 10-19-67
 REG. C.E. NO. 15867

FOR LEGEND SEE PLAN NO. S-1

NOTE:
 GRADES TO WHICH THIS IMPROVEMENT IS TO BE CONSTRUCTED ARE SHOWN ON PLANS AND PROFILES. GRADE POINTS FOR TOP OF CURB, CENTER LINE OF STREETS, OR CENTER LINE OF ALLEYS ARE SHOWN BY CIRCLES ON PROFILES. AT ALL POINTS BETWEEN DESIGNATED POINTS THE GRADE SHALL BE ESTABLISHED SO AS TO COMPOSE TO A STRAIGHT LINE BETWEEN SAID DESIGNATED POINTS. ELEVATIONS ARE IN FEET ABOVE U.S.C. & G.S. MEAN SEA LEVEL DATE OF 1929.
 THIS DRAWING AND THE DATA HEREON ARE HEREBY MADE A PART OF THE SPECIFICATIONS.
 BEFORE WORK CAN BE STARTED, THE CONTRACTOR MUST OBTAIN A PERMIT TO EXCAVATE IN COUNTY STREETS FROM THE L.A. COUNTY ROAD DEPT. DISTRICT OFFICE NO. 3 AND PAY A FEE TO THE COUNTY ENGINEER, ROOM 300, COUNTY ENGINEERING BUILDING, 100 WEST SECOND STREET OR COUNTY ENGINEER, DISTRICT OFFICE, APPROPRIATE TO COVER THE COST OF CONSTRUCTION INSPECTION AND RECORD PLANS.
 APPROVAL OF THIS PLAN BY THE COUNTY OF LOS ANGELES DOES NOT CONSTITUTE A REPRESENTATION AS TO THE ACCURACY OF THE LOCATION OF OR THE EXISTENCE OR NON-EXISTENCE OF ANY UNDERGROUND UTILITY PIPE, OR STRUCTURE WITHIN THE LIMITS OF THIS PROJECT. THIS NOTE APPLIES TO ALL PAGES.
 IF WORK IS TO BE DONE IN A STATE HIGHWAY, A PERMIT MUST BE OBTAINED FROM THE STATE OF CALIFORNIA, DIVISION OF HIGHWAYS, 120 SOUTH SPRING STREET, LOS ANGELES, CALIFORNIA.

COUNTY OF LOS ANGELES, CALIFORNIA
 JOHN A. LAMBIE, COUNTY ENGINEER J. D. PARKHURST, CHIEF ENGINEER
 CO. SAN. DIST. NO. 12
 APPROVED BY: Robert H. Beyer Regional Engineer APPROVED BY: J. D. Parkhurst Chief Engineer

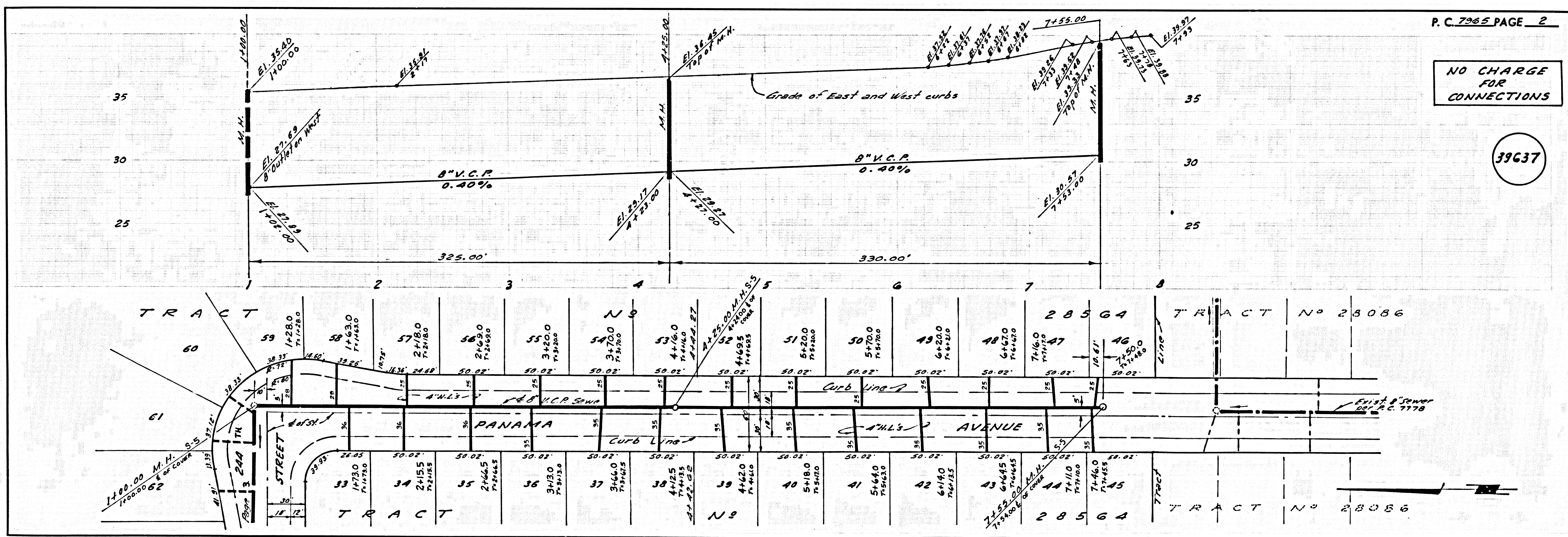
CHECKED BY: Stewart L. Voland 1-29-68
 REG. C.E. NO. 10557

- NOTES:
1. PROVIDE STAKES ON THE PROPERTY LINE OR PROPERTY LINES PRODUCED AT RIGHT ANGLES TO THE SEWER LINE AT THE CENTER LINE OF EACH MANHOLE.
 2. NO REPRESENTATIVE OF THE COUNTY ENGINEER WILL SURVEY OR LAY OUT ANY PORTION OF THE WORK.
 3. THE PRIVATE ENGINEER SHALL FURNISH THE COUNTY ENGINEER WITH GRADE SHEETS AND STATIONING FOR ALL HOUSE LATERALS, 4" OR 6" BRANCHES AND SHALL PROVIDE STAKES FOR THESE AT THEIR WORK LOCATIONS WITH STATIONING PLAINLY MARKED. ALL HOUSE LATERALS SHALL BE CONSTRUCTED IN A STRAIGHT ALIGNMENT AT RIGHT ANGLES FROM THE MAIN LINE SEWER EXCEPT AS SHOWN ON THE PLANS. HOUSE LATERALS FROM CHIMNEYS SHALL NOT HAVE AN ANGLE OF LESS THAN 45° WITH THE MAIN LINE SEWER. ANY CHANGE IN ALIGNMENT SHALL BE REQUESTED IN WRITING BY THE PRIVATE ENGINEER.
 4. THE PRIVATE ENGINEER SHALL FURNISH THE HOUSE LATERAL DEPTH AT THE PROPERTY LINE BELOW THE TOP OF CURB ELEVATION FOR EACH HOUSE LATERAL ON THE GRADE SHEET.
 5. NO REVISIONS SHALL BE MADE IN THESE PLANS WITHOUT THE APPROVAL OF THE COUNTY ENGINEER.
 6. THE CONTRACTOR SHALL NOTIFY THE CONSTRUCTION DIVISION BY TELEPHONE, MADISON 9-26, EXT. 8151, AT LEAST TWENTY-FOUR HOURS BEFORE STARTING ANY WORK UNDER THIS CONTRACT.
 7. MANHOLES SHALL BE BRICK SEWER STRUCTURES PER S-3 OR PRECAST CONCRETE MANHOLES PER S-5 OR S-6.
 8. USE STANDARD MANHOLE FRAMES AND COVERS, S-11, EXCEPT AS NOTED.
 9. MANHOLE TOPS IN UNIMPROVED AREAS OR WAYS TO BE SIX INCHES ABOVE FINISHED GRADE.
 10. USE EXTRA STRENGTH PIPE. ALL PIPE IS STANDARD DEPTH EXCEPT AS NOTED.
 11. USE MECHANICAL COMPRESSION JOINTS FOR ALL V.C.P. JOINTS PER SPECS., SECS. 34, 40 & 41.
 12. IF A POWER POLE IS WITHIN THREE FEET OF THE SEWER, THE SEWER SHALL BE ENCASED, PER S-23, TWO FEET ON EACH SIDE FROM THE POINT OF INTERFERENCE.
 13. IF DURING THE COURSE OF CONSTRUCTION IT IS DETERMINED THAT THERE IS LESS THAN FOUR FEET OF COVER OVER THE TOP OF A MAIN LINE OR HOUSE LATERAL V.C.P. SEWER WHICH IS NOT INDICATED ON THE PLANS, THE PIPE SHALL BE ENCASED PER S-23, UNLESS OTHERWISE APPROVED BY THE COUNTY ENGINEER.
 14. HOUSE LATERALS TO BE CONSTRUCTED WITH INVERTS AT PROPERTY LINE 6 FEET BELOW CURB GRADE EXCEPT AS NOTED.
 15. RESURFACE ALL TRENCHES WITHIN PAVED AREAS TO MEET L.A. COUNTY ROAD DEPT. OR CALIFORNIA STATE HIGHWAY REQUIREMENTS IN ACCORDANCE WITH PERMITS.
 16. FOR ALLOWABLE LEAKAGE TEST USE FORMULA NO. 2, SPECS., SEC. 84.
 17. ALL STATE AND LOCAL TRENCH SAFETY ORDERS WILL BE STRICTLY ENFORCED.
 18. (a) Acceptable certification of compaction test results shall be submitted to the Construction Division. Compaction tests are to be made in accordance with A.S.T.M. Standard Method of Test D-1557.
 (b) No construction is permitted in filled areas where the relative density of compaction is less than 90%.
 (c) If the relative density of compaction is less than 90% all main lines and house laterals shall be encased per S-23 or have special base courses per S-21. Case III Special Manhole Bases per S-21.
 (d) If the relative density of compaction is 90% or greater the special provisions in (c) are not required.
 19. V or T branching may be used, except as noted.

COLLECT CHARGES AS INDICATED
 L. Curtis 1/29/68

NOTICE TO CONTRACTOR
 The existence and location of any underground utility pipes or structures shown on these plans are obtained by a search of the available records. To the best of my knowledge there are no existing utilities except as shown on these plans. The contractor is required to take due precautionary measures to protect the utility lines shown and any other lines not of record or not shown on these plans.
 Paul H. Beyer
 R.E.

J.N. 0250.02



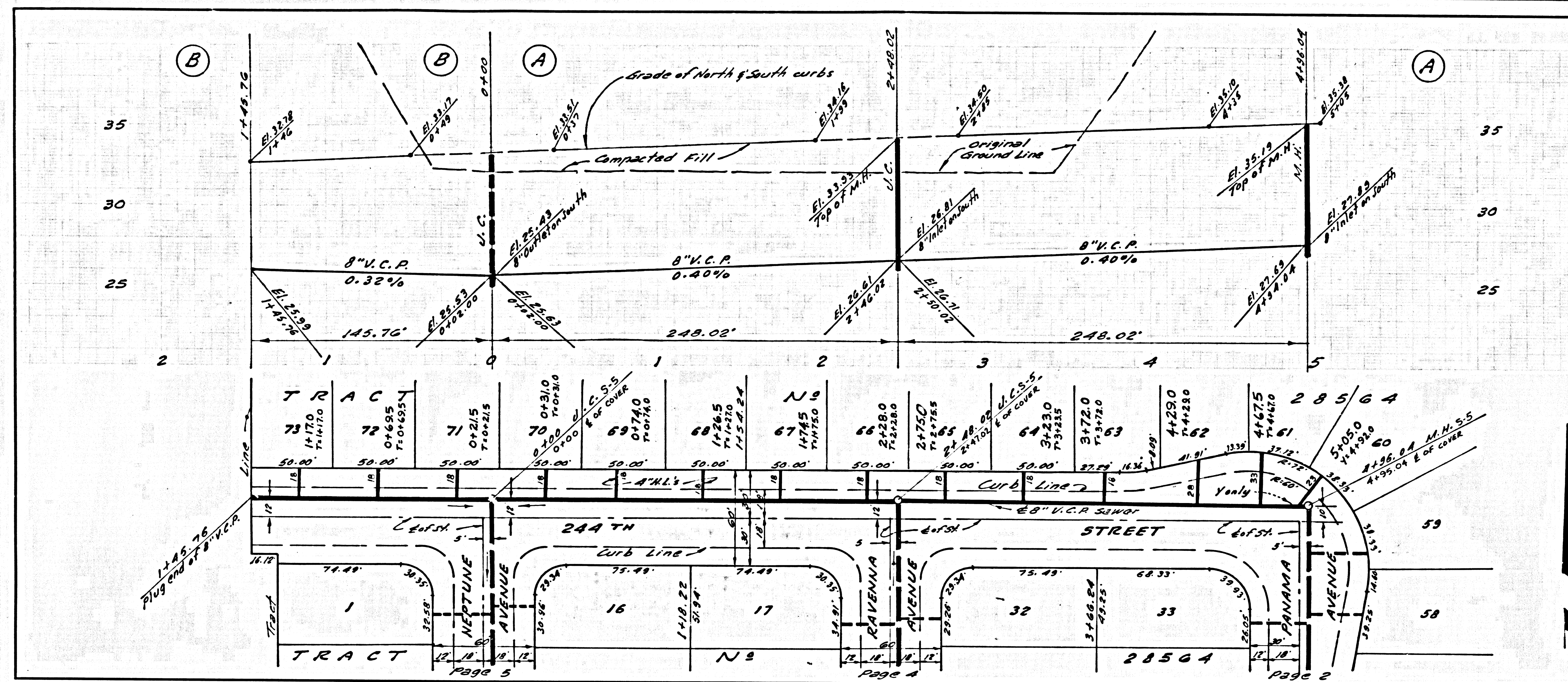
P.C. 7965 PAGE 2

NO CHARGE FOR CONNECTIONS

39637

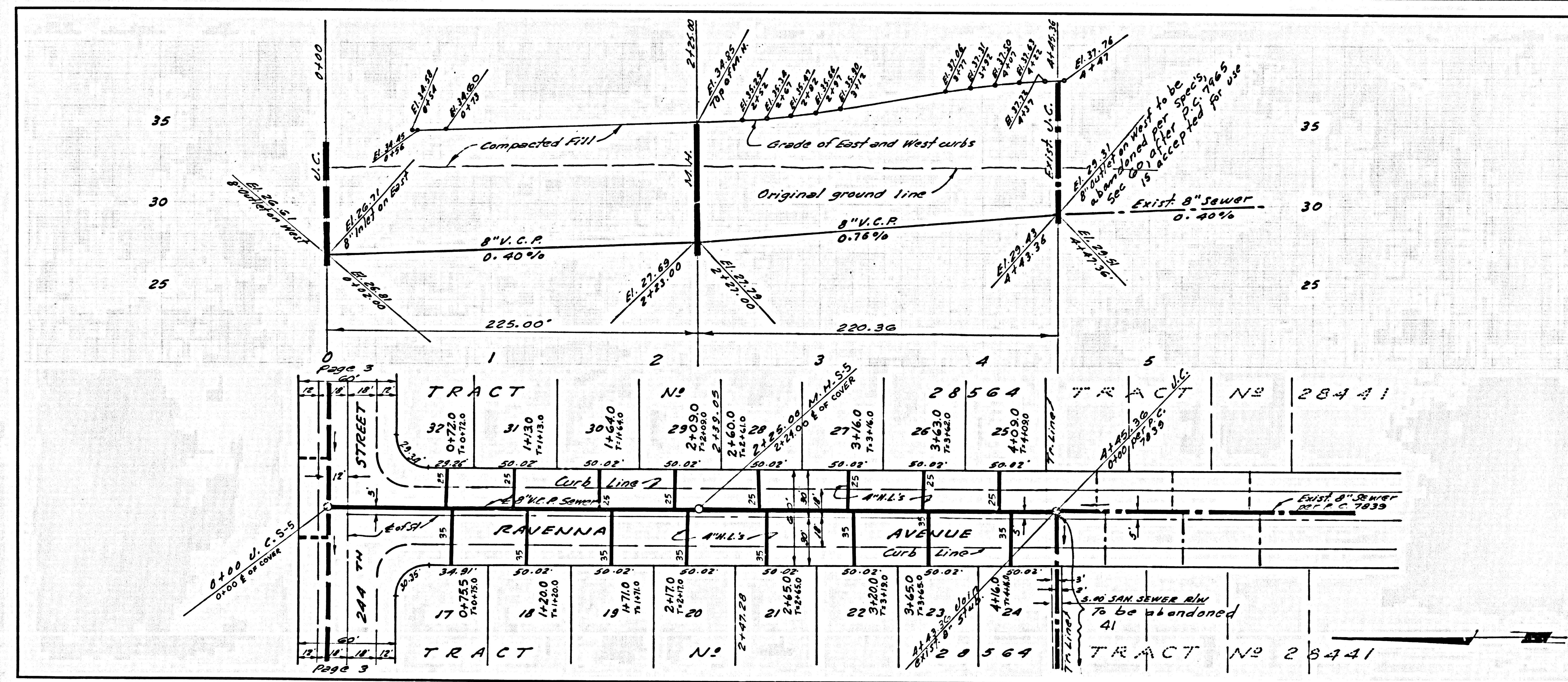
NO CHARGE FOR CONNECTIONS

39638



NO CHARGE FOR CONNECTIONS

39639



NO CHARGE FOR CONNECTIONS

39640

