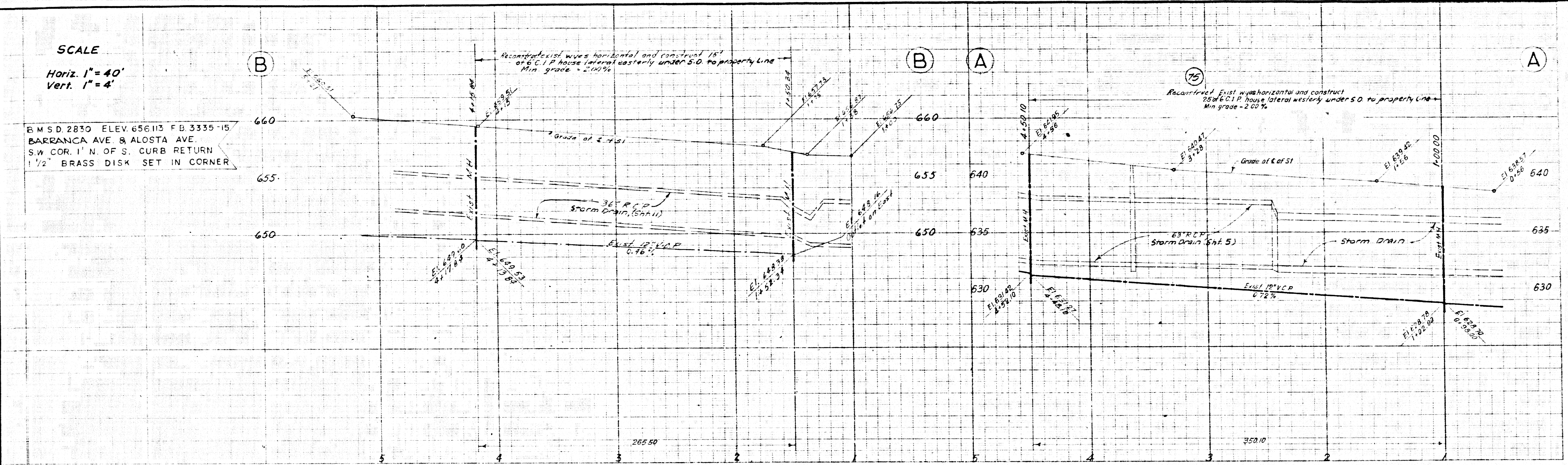
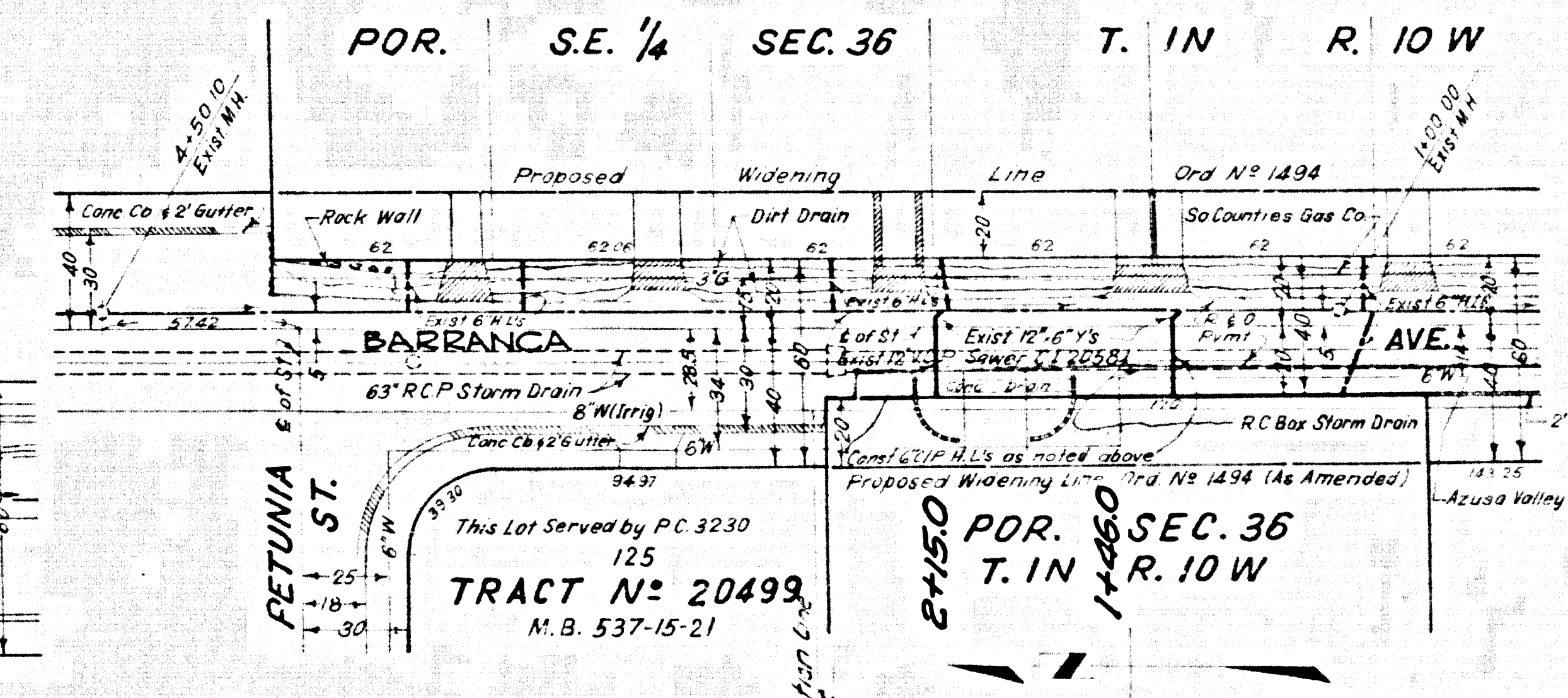
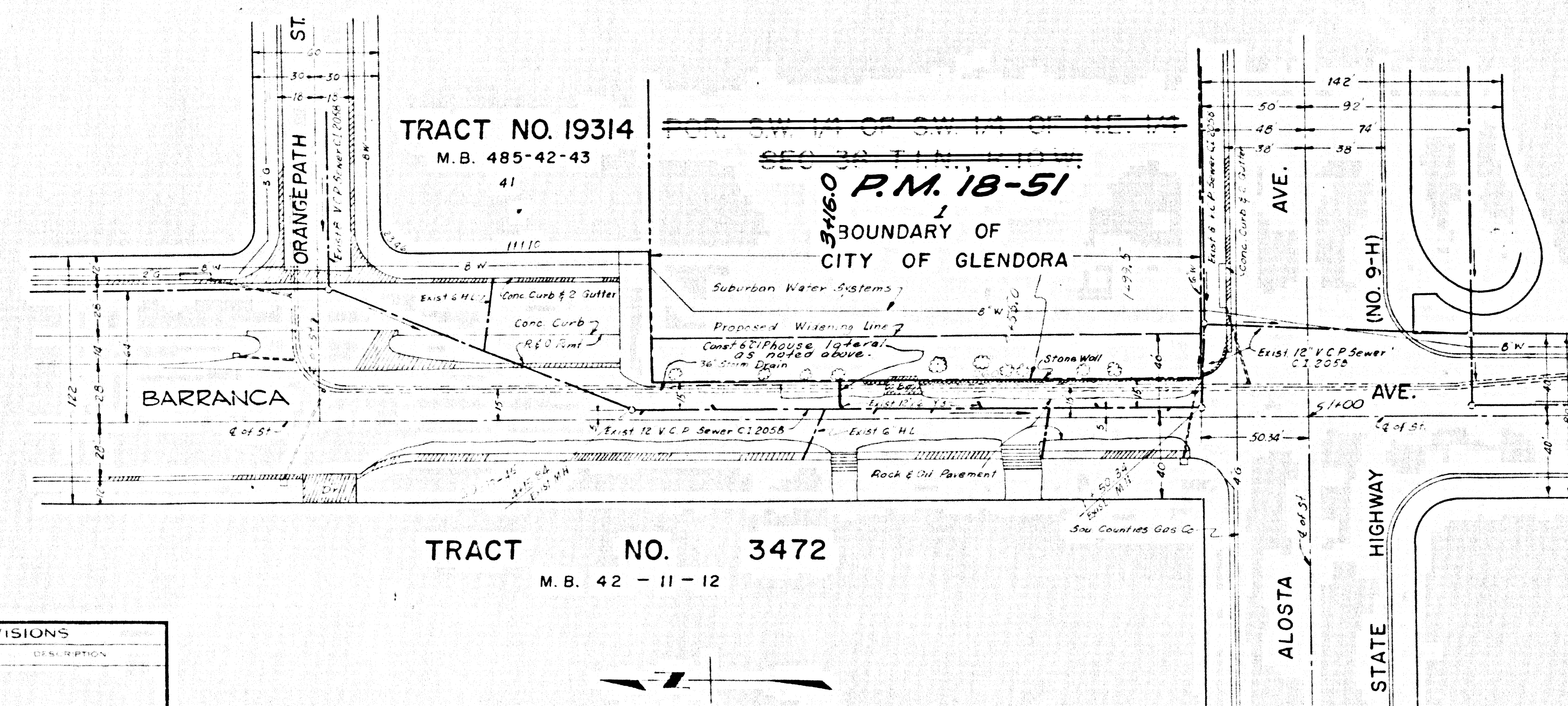


SCALE
 Horiz. 1" = 40'
 Vert. 1" = 4'



GENERAL SEWER NOTES

- Sanitary sewers shall be constructed in accordance with the Standard Specifications for Public Works Construction hereinafter referred to as the Standard Specifications, Special Provisions and Standard Plans on file in the Office of the County Engineer.
 - For Legend see Standard Plan S-1.
 - Use extra strength vitrified clay pipe. All pipe is standard depth, except as noted.
 - Vitrified clay pipe joints shall be Type "D", "F" or "G", per Section 208-2 of Standard Specifications.
 - "T" or "Y" branches may be used for connection to main line sewers, except as noted.
 - All structures shall be brick manholes per S-2.
 - Use standard manhole frames and covers per Standard Plan S-15.
 - Sewer pipe and appurtenances shall be abandoned in accordance with Section 306-3 of Standard Specifications.
 - Sewers to be tested for leakage per Section 306-2.3.7 Standard Specifications.
 - All State and Local trench safety orders will be strictly enforced.
 - Existing sewer services and flow shall be maintained at all times.
 - No revisions shall be made to these plans without the approval of the County Engineer.
 - The Contractor shall notify the Construction Division of the County Engineer by telephone 629-4747, Ext 81551, at least twenty-four hours before starting any work under this contract.
 - In addition to standards listed above, the following latest revised Standard Plans shall apply in the construction of this project: S-2, S-17, S-21, S-23, S-26, S-33, S-35, S-37, S-40, S-41, S-42, S-43, S-44, S-45, S-46, S-47, S-48, S-49, S-50, S-51, S-52, S-53, S-54, S-55, S-56, S-57, S-58, S-59, S-60, S-61, S-62, S-63, S-64, S-65, S-66, S-67, S-68, S-69, S-70, S-71, S-72, S-73, S-74, S-75, S-76, S-77, S-78, S-79, S-80, S-81, S-82, S-83, S-84, S-85, S-86, S-87, S-88, S-89, S-90, S-91, S-92, S-93, S-94, S-95, S-96, S-97, S-98, S-99, S-100.
 - Use Case 1 Standard Bedding for Sewer Pipe per S-21.
 - All concrete cross gutters, curbs, gutters and curbs shall be finished or jacked per Los Angeles County Road Department requirements.
 - Cast iron pipe shall be Class 150 minimum and shall conform to Section 207-91(C)(2) or Section 207-91(D)(3) of the Standard Specifications. Quantity of cast iron pipe shall conform to Sections 207-97 of the Standard Specifications.
 - Joint for transition from vitrified clay pipe to cast iron pipe shall be rubber sleeve type with hood if necessary per Section 208-2 of Standard Specifications.
- County Sanitation Districts shall be notified prior to the following so that required inspection can be made (Items 1, 3, 4 & 5):
- Commencement of construction of manhole on District trunk sewer.
 - Breaking into existing manhole on District trunk sewer.
 - Cone drilling District trunk sewer.
 - Construction of house connections to District trunk sewer.
 - Acceptance of the project.
- NO CONNECTIONS FOR THE DISPOSAL OF INDUSTRIAL WASTES SHALL BE MADE TO SEWERS SHOWN ON THESE DRAWINGS WITHOUT WRITTEN PERMISSION FROM THE CHIEF ENGINEER AND GENERAL MANAGER OF THE COUNTY SANITATION DISTRICTS.



REVISIONS			
NO.	DATE	DESCRIPTION	BY



APPROVED:
 JOHN D. PARKHURST
 CHIEF ENGINEER
 C.C. SAN. DIST. NO. 22

PREPARED BY
 JOHN A. LAMBIE
 COUNTY ENGINEER
 C.C. 7966
 RECOMMENDED BY

1964 STORM DRAIN BOND ISSUE
 LOS ANGELES COUNTY
 FLOOD CONTROL DISTRICT

COUNTY
 PROJECT NO. 1217, UNIT 2
 AS BUILT
 SANITARY SEWER RECONSTRUCTION

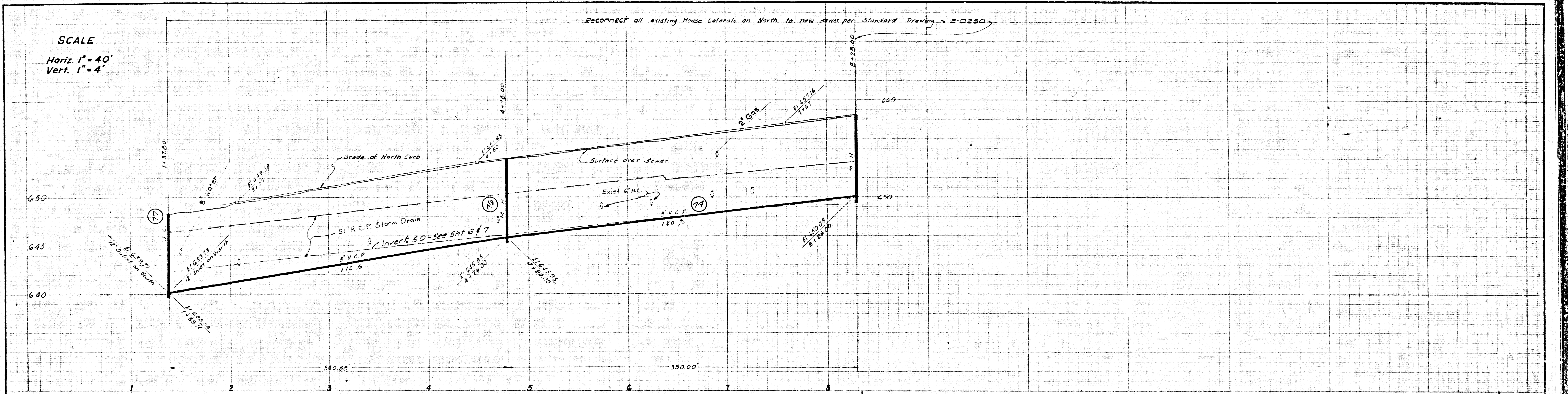
SCALE: HORIZ. 1" = 40', VERT. 1" = 4'
 DATE: DEC 68
 DWG. NO. 364-1217 D4.15
 SHEET 15 OF 17

C.C. 7966

D-124 - P.C. 4941

SCALE
Horiz. 1"=40'
Vert. 1"=4'

Reconnect all existing House Laterals on North to new sewer per Standard Drawing E-0250



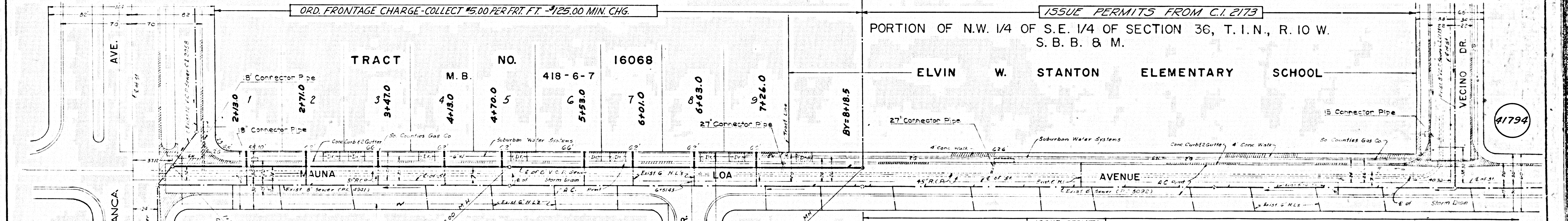
ORD. FRONTAGE CHARGE-COLLECT \$5.00 PER FRT. FT. - \$125.00 MIN. CHG.

ISSUE PERMITS FROM C.I. 2173

PORTION OF N.W. 1/4 OF S.E. 1/4 OF SECTION 36, T. 10 N., R. 10 W. S. B. B. & M.

TRACT NO. 418-6-7 16068

ELVIN W. STANTON ELEMENTARY SCHOOL



ISSUE PERMITS FROM P.C. 4941

ISSUE PERMITS FROM P.C. 4941

ISSUE PERMITS FROM P.C. 5092

1964 STORM DRAIN BOND ISSUE
LOS ANGELES COUNTY
FLOOD CONTROL DISTRICT

NO.	DATE	DESCRIPTION

APPROVED:
JOHN D. PARKHURST
CHIEF ENGINEER
CO. SAN. DIST. NO. 22

BY: *[Signature]*
OFFICE ENGINEER

PREPARED BY
JOHN A. LAMBIE
COUNTY ENGINEER
C.C. 7966
RECOMMENDED BY
[Signature]

COUNTY
PROJECT NO. 1217, UNIT 2
AS BUILT
SANITARY SEWER RECONSTRUCTION

APPROVED BY: *[Signature]*
DATE: DEC '68
DWG. NO. 354-1217-D4.10
SHEET 16 OF 16