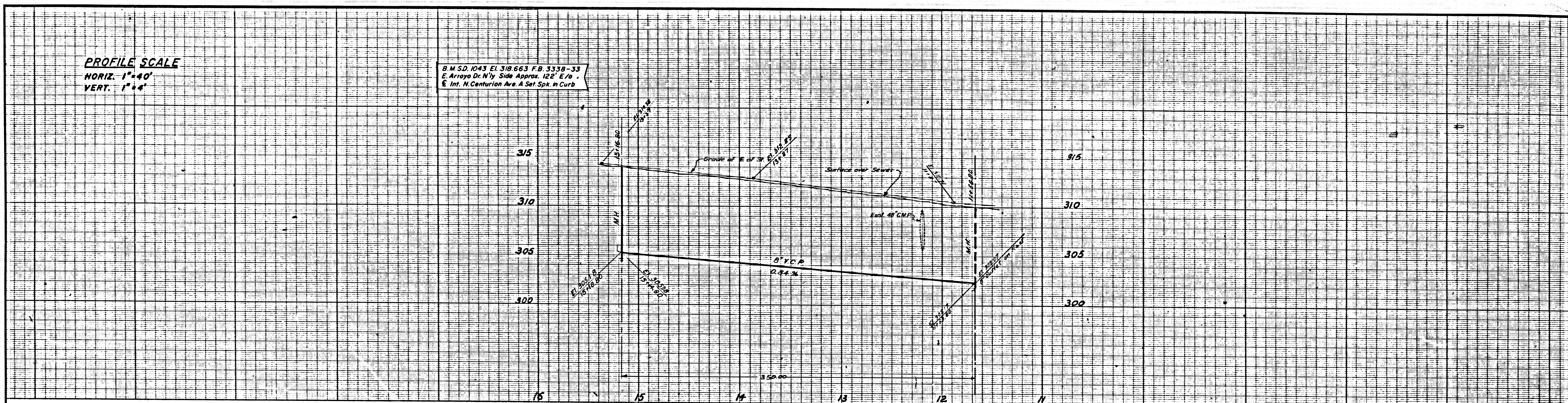


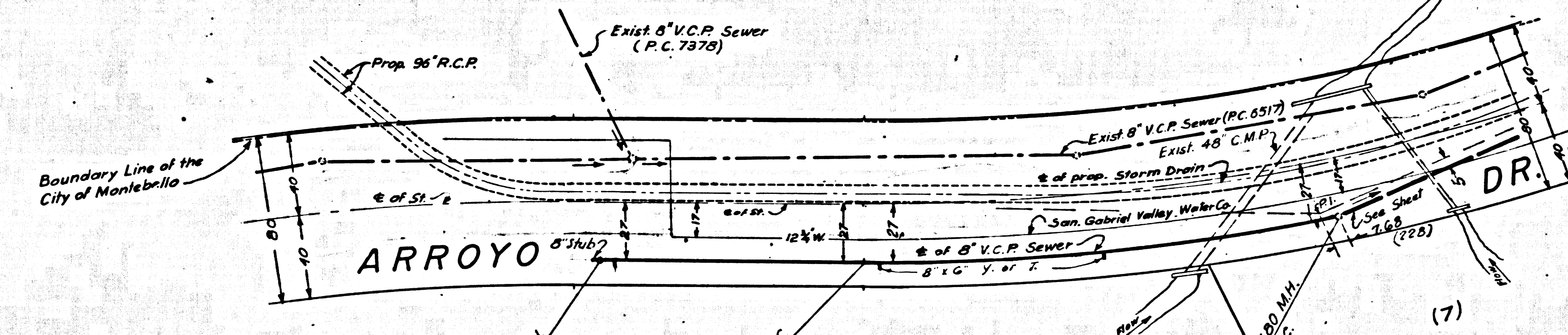
PROFILE SCALE
 HORIZ. 1"=40'
 VERT. 1"=4'

B.M.S.D. 1043 EL. 310.663 F.B. 3330-33
 E. Arroyo Dr. N by Side Approx. 122' E/O
 & Int. N. Centurion Ave. A. Soil Spk. in Curb



Note: Contact the Montebello City Engineer 24 hours prior to construction in the City of Montebello. Tel. 782-9100.

Sewer Curve Data
 R = 1027.00'
 Δ = 12°43'11"
 L = 228.00'
 T = 114.00'



TRACT NO. 10063
 CITY OF MONTEBELLO

REVISIONS			
NO.	DATE	DESCRIPTION	BY

TENTATIVE TRACT NO. 30880

APPROVED
 CITY OF MONTEBELLO
 CITY ENGINEER

APPROVED
 JOHN D. PARKHURST
 CHIEF ENGINEER - CO. SAN DIST. NO. 18

PREPARED BY
 JOHN A. LAMBIE
 COUNTY ENGINEER
 C.C. 7967
 RECOMMENDED BY
 [Signature]

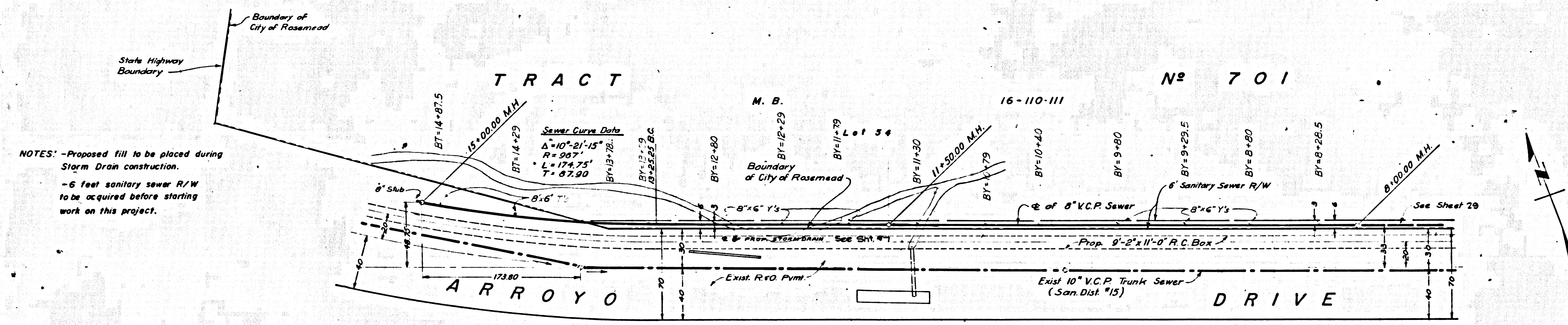
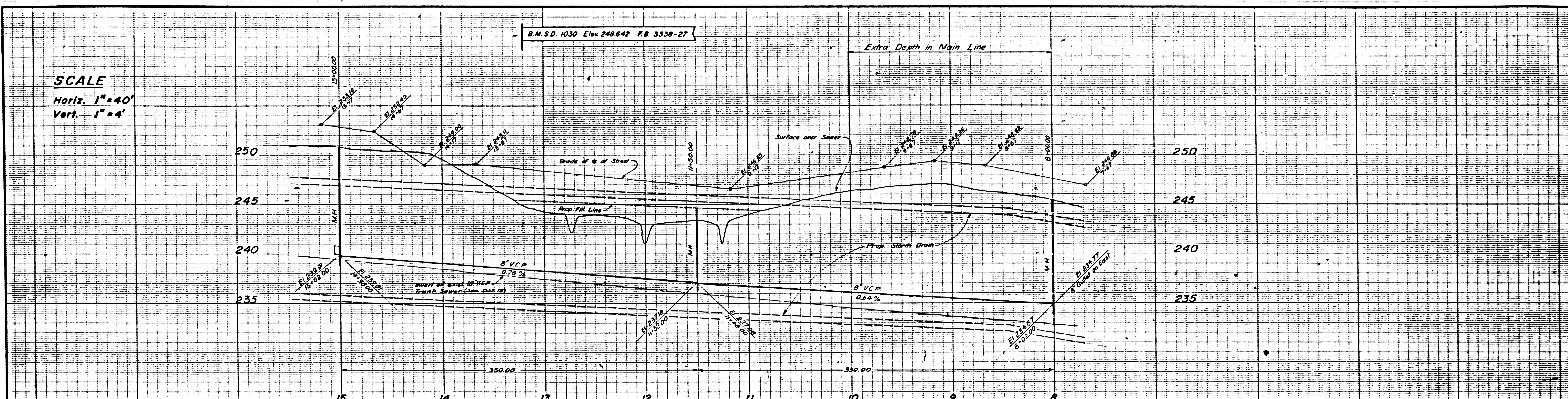
1964 STORM DRAIN BOND ISSUE
 LOS ANGELES COUNTY
 FLOOD CONTROL DISTRICT
 COUNTY
 PROJECT NO. 1225
 UNIT 2
 SEWER RECONSTRUCTION
 PLAN AND PROFILE

RECOMMENDED BY	APPROVAL RECOMMENDED BY
CITY ENGINEER - IN CHARGE	DEPT. CHIEF DEPUTY ENGINEER
APPROVED BY	CHIEF ENGINEER

SCALE: Horiz. 1"=40' Vert. 1"=4'
 DATE: [Blank]
 DWG. NO. SHEET 57 OF 57

78-1-7027

SCALE
 Horiz. 1"=40'
 Vert. 1"=4'



NOTES: -Proposed fill to be placed during Storm Drain construction.
 -6 feet sanitary sewer R/W to be acquired before starting work on this project.

REVISIONS			
NO.	DATE	DESCRIPTION	BY

APPROVED
JOHN D. PARKHURST
 CHIEF ENGINEER
 CO SAN. DIST. NO. 18

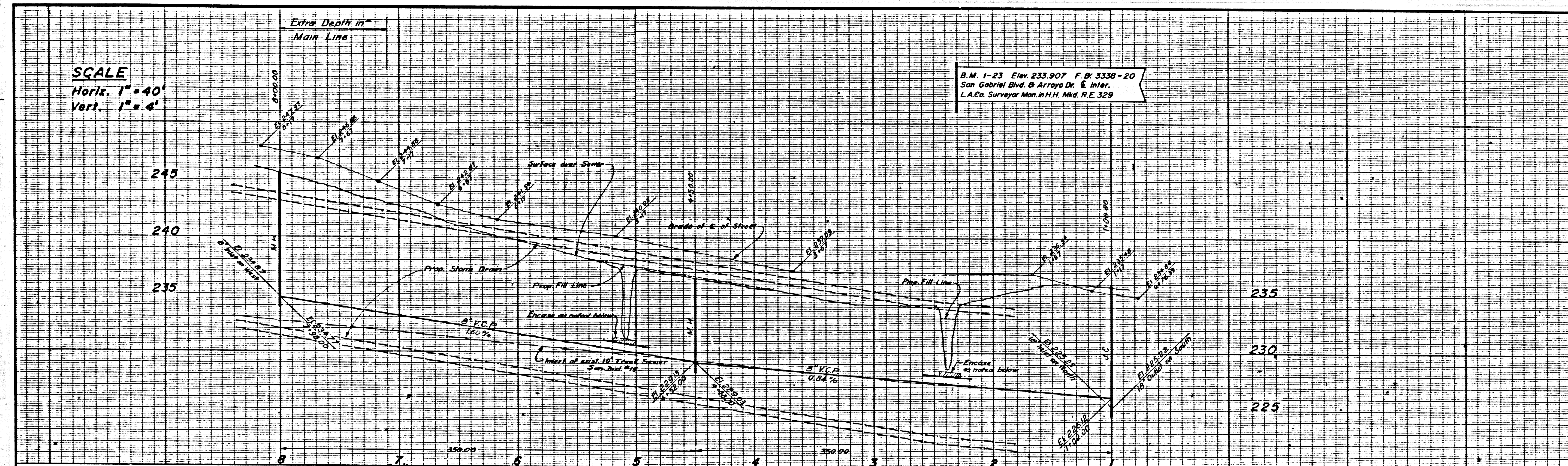
PREPARED BY
JOHN A. LAMBIE
 COUNTY ENGINEER
 C.C. 7967

1964 STORM DRAIN BOND ISSUE
 LOS ANGELES COUNTY
 FLOOD CONTROL DISTRICT
 COUNTY
 PROJECT NO. 1225
 UNIT 2
 SEWER RECONSTRUCTION
 PLAN AND PROFILE

SCALE: Horiz. 1"=40'
 DATE: Sep 65
 DWG. NO. 364-1225-D 30
 SHEET 30 OF 37

30 1091

SCALE
 Horiz. 1" = 40'
 Vert. 1" = 4'

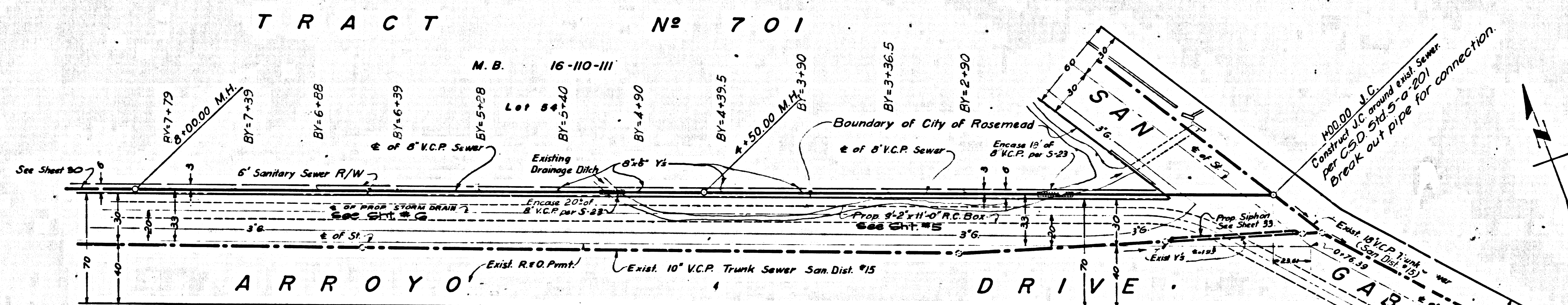


B.M. 1-23 Elev. 233.907 F. B. 3338-20
 San Gabriel Blvd. & Arroyo Dr. & Inter.
 L.A. Co. Surveyor Mon. H.H. Mcd. R.E. 329

GENERAL SEWER NOTES

- Sanitary sewers shall be constructed in accordance with the Standard Specifications for Public Works Construction (hereinafter referred to as the Standard Specifications), Special Provisions and Standard Plans on file in the Office of the County Engineer.
- Existing sewer services and flow shall be maintained at all times.
- All cast iron sewer pipe and joints shall be in accordance with Sections 207-9.1 (b) and 207-9.7 of the Special Provisions and 306-2.3.4 (b,d,e) of the Standard Specifications.
- All concrete cross gutters, curbs, gutters and driveways shall be tunneled or jacked per Los Angeles County Road Department requirements.
- The Contractor shall notify the Construction Division of County Engineer by telephone 629-4747, Ext. 81551 at least 24 hours before starting any work under this contract.
- Refer to Sec. 7-10.4.1 of the Standard Specifications regarding Safety orders.
- Construction under this project shall conform to the following Standard Plans: S-1, S-2, S-3, S-13, S-15, S-17, S-21, S-26, S-27, S-30, S-33, S-6, S-8.
- Contractor shall notify Robert Powell (636-3096) of Los Angeles County Sanitation Districts at least 48 hours prior to commencing construction work on any County San. Dist. Sewers or appurtenances.

NOTES-Proposed fill to be placed during Storm Drain construction.
 6 feet sanitary sewer R/W to be acquired before starting work on this project.



REVISIONS			
MARK	DATE	DESCRIPTION	

APPROVED
JOHN D. PARKHURST
 CHIEF ENGINEER
 CO SAN. DIST. NO. 15

PREPARED BY
JOHN A. LAMBIE
 COUNTY ENGINEER
 C.C. 7967

1964 STORM DRAIN ISSUE
 LOS ANGELES COUNTY
 FLOOD CONTROL DISTRICT
 COUNTY
PROJECT NO. 1225
 UNIT 2
 SEWER RECONSTRUCTION
PLAN AND PROFILE

SCALE
 Horiz. 1" = 40'
 Vert. 1" = 4'

DATE
 5/10/68

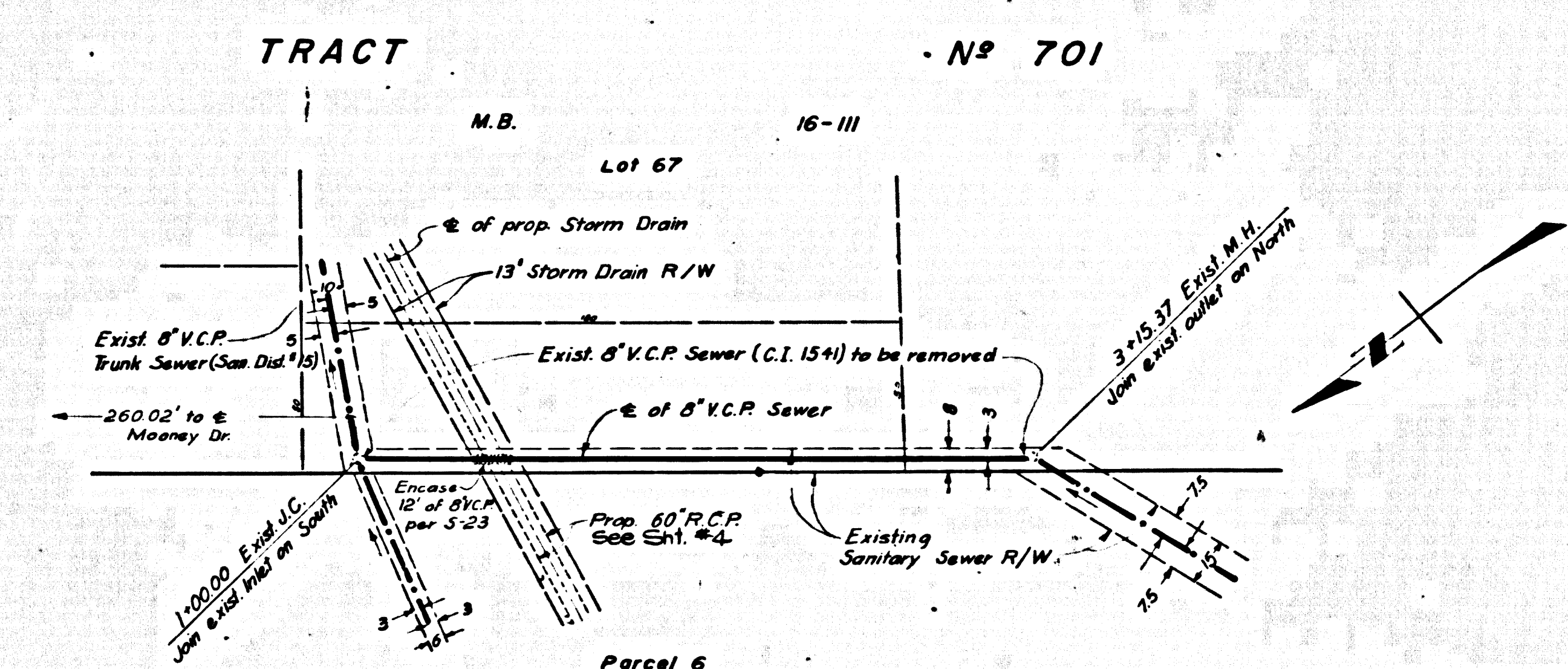
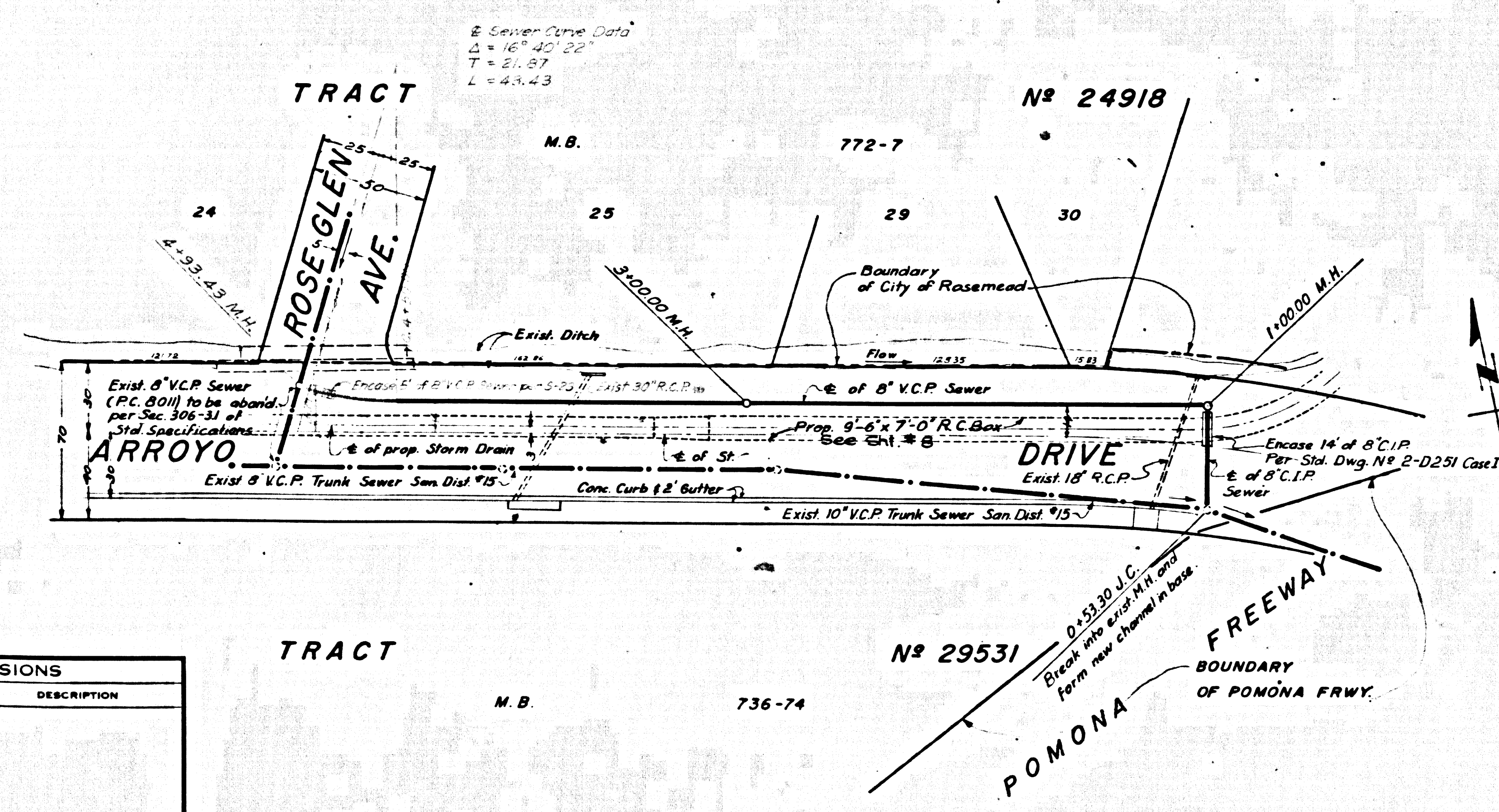
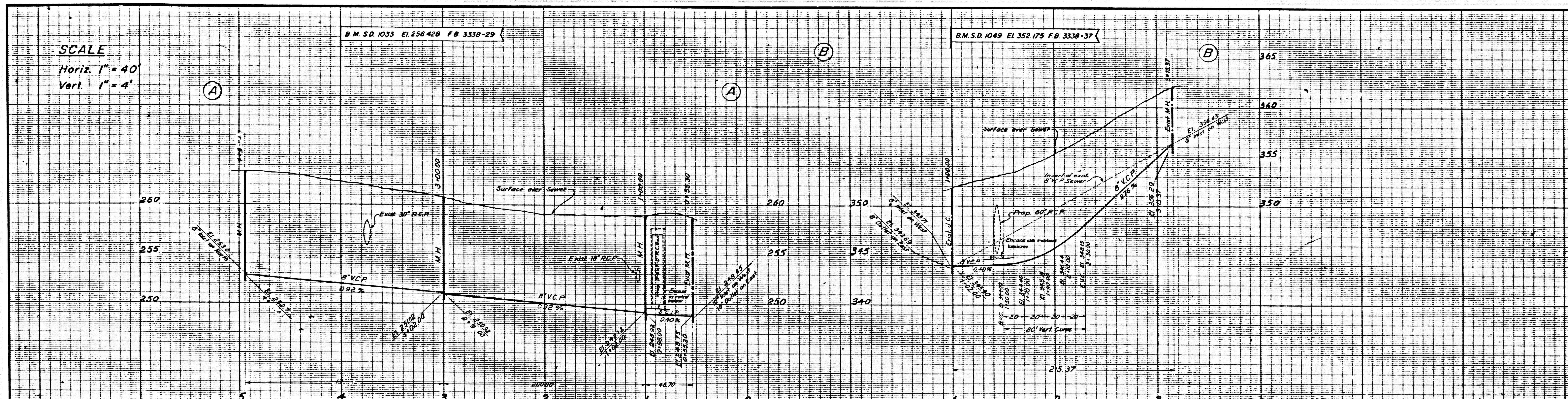
DWG. NO. 364-1225-D 29
 SHEET 29 OF 37

es 76971

SCALE
 Horiz. 1" = 40'
 Vert. 1" = 4'

B.M. S.D. 1033 El. 256.420 F.B. 3338-29

B.M. S.D. 1049 El. 352.175 F.B. 3338-37



REVISIONS	
MARK	DESCRIPTION

APPROVED
JOHN D. PARKHURST
 COUNTY ENGINEER
 CO. SAN. DIST. NO. 18
 DATE 8-1-65

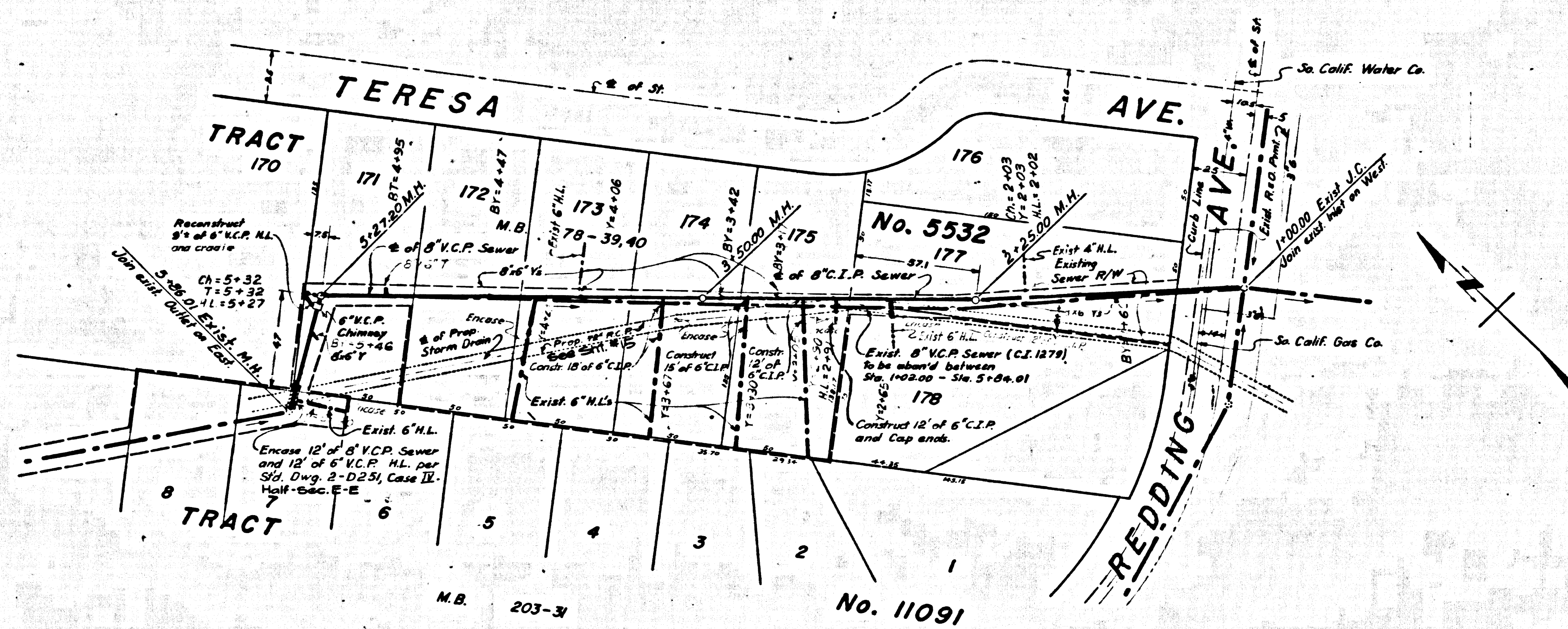
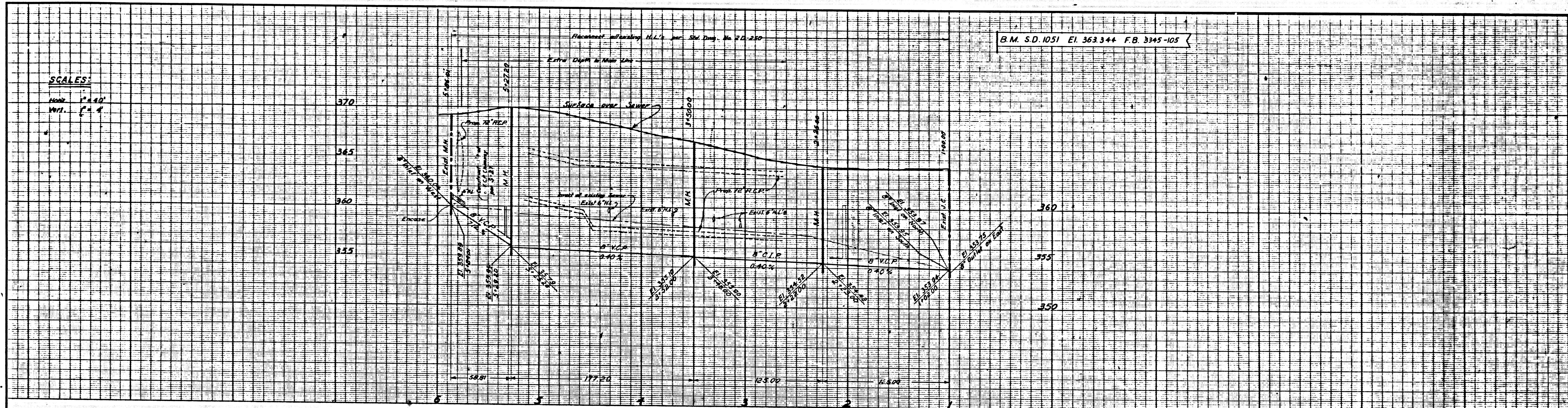
PREPARED BY
JOHN A. LAMBIE
 COUNTY ENGINEER
 CC 7967
 RECOMMENDED BY
Richard M. Cox 8-2-65
 ASST. DIVISION ENGINEER - SANITATION DIVISION

1964 STORM DRAIN BOND ISSUE
 LOS ANGELES COUNTY
 FLOOD CONTROL DISTRICT
 COUNTY
PROJECT NO. 1225
 UNIT 2
 SEWER RECONSTRUCTION
PLAN AND PROFILE

SCALE: HORIZ. 1" = 40', VERT. 1" = 4'
 DATE: 8-1-65
 DWG. NO. 364-1225-D-31
 SHEET 31 OF 37

18 7097

SCALES:
 HORIZ. 1" = 40'
 VERT. 1" = 4'



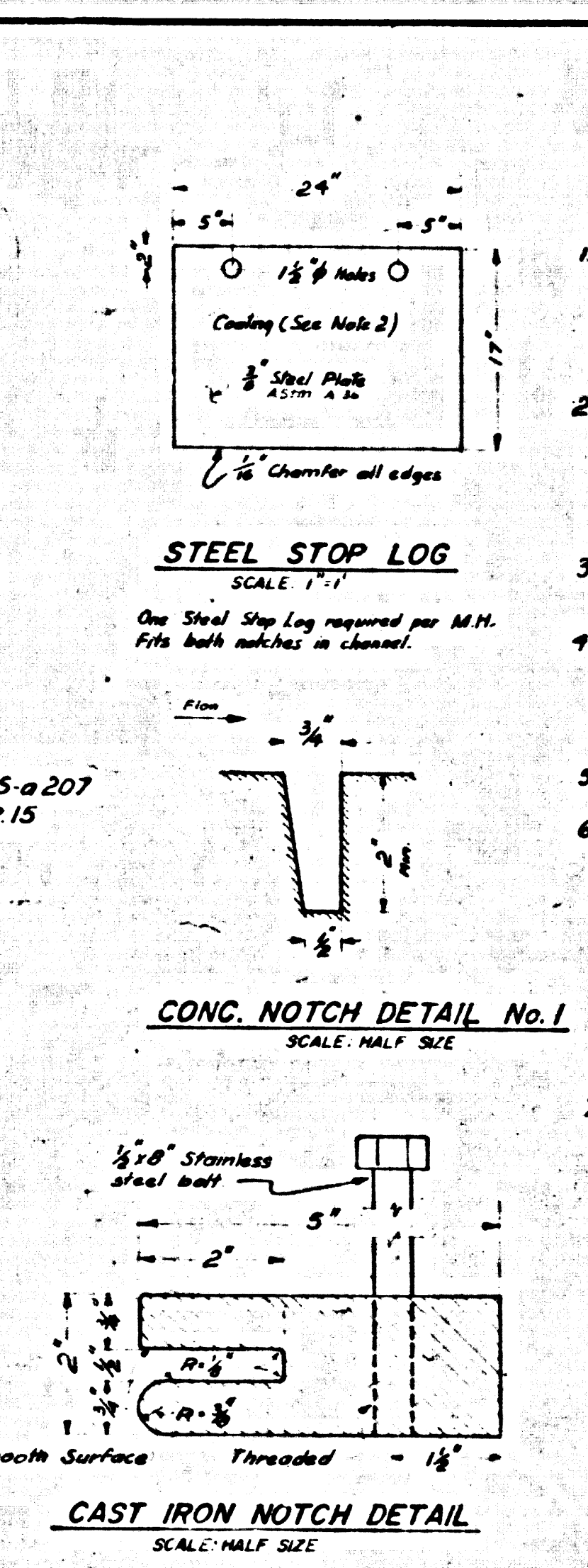
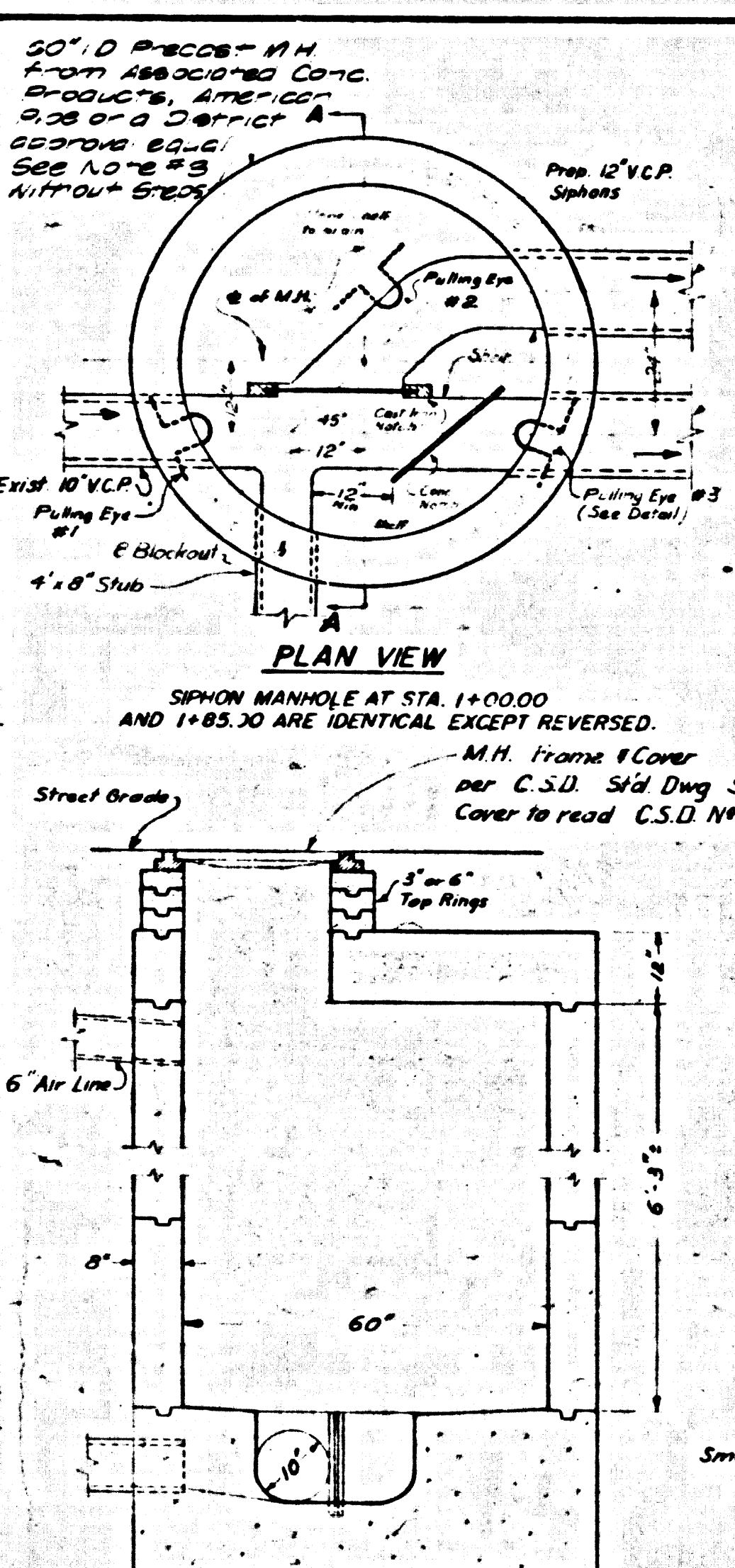
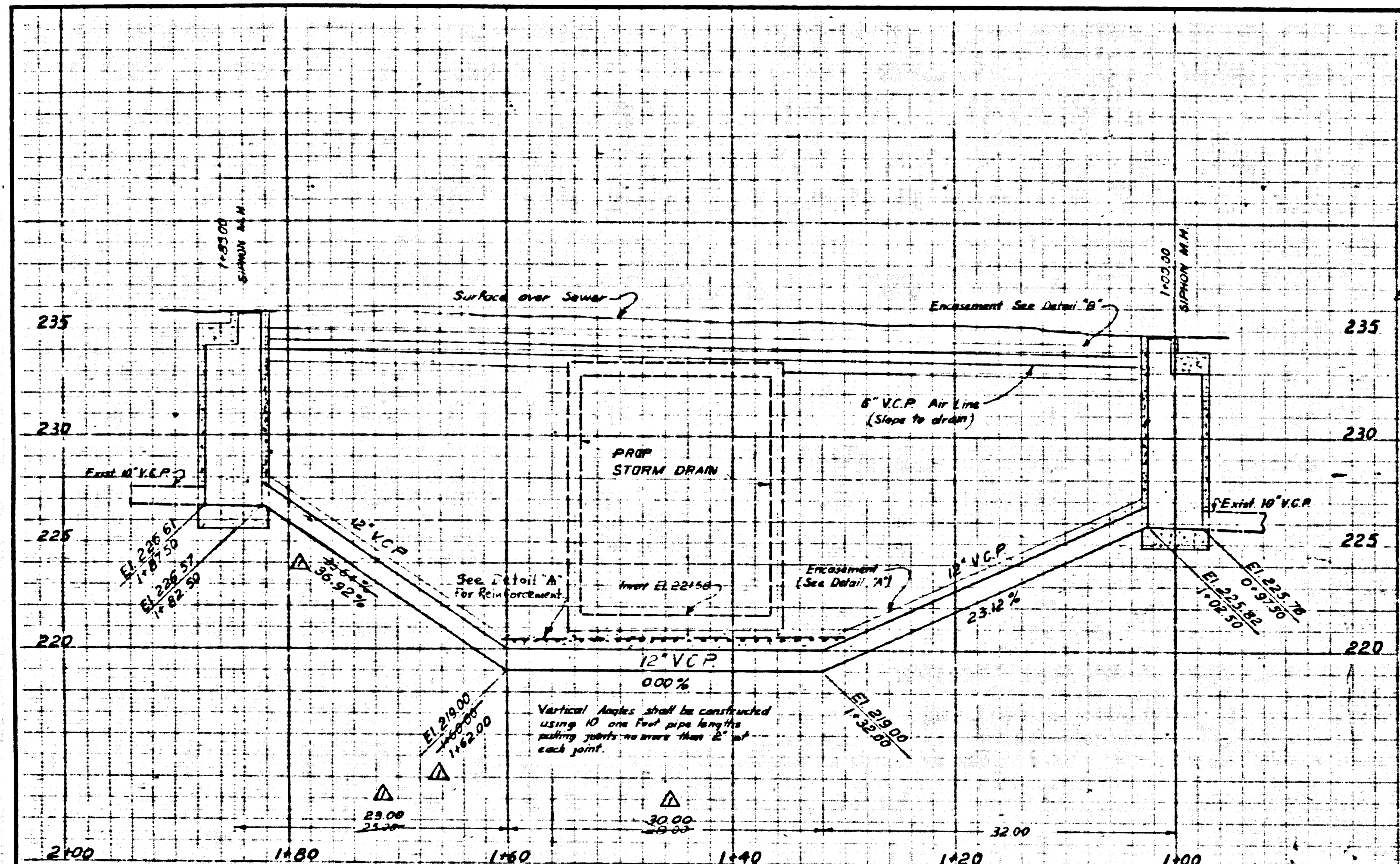
REVISIONS			
MARK	DATE	DESCRIPTION	BY

APPROVED
JOHN D. PARKHURST
 CHIEF ENGINEER
 CO. SAN. DIST. NO. 15

PREPARED BY
JOHN A. LAMBIE
 COUNTY ENGINEER
 C.C. 7967
 RECOMMENDED BY
Richard M. Cox 8-9-68
 ASST. DIVISION ENGINEER - SANITATION DIVISION
 DRAWN BY: MCGINNIS
 CHECKED BY: WARD

1964 STORM DRAIN BOND ISSUE
 LOS ANGELES COUNTY
 FLOOD CONTROL DISTRICT
 COUNTY
PROJECT NO. 1225
 UNIT 2
 SEWER RECONSTRUCTION
PLAN AND PROFILE
 SCALE: HORIZ. 1" = 40' VERT. 1" = 4'
 DATE: 8/29/68
 DWG. NO. 364-1225-D-32
 SHEET 32 OF 37

32
 1225

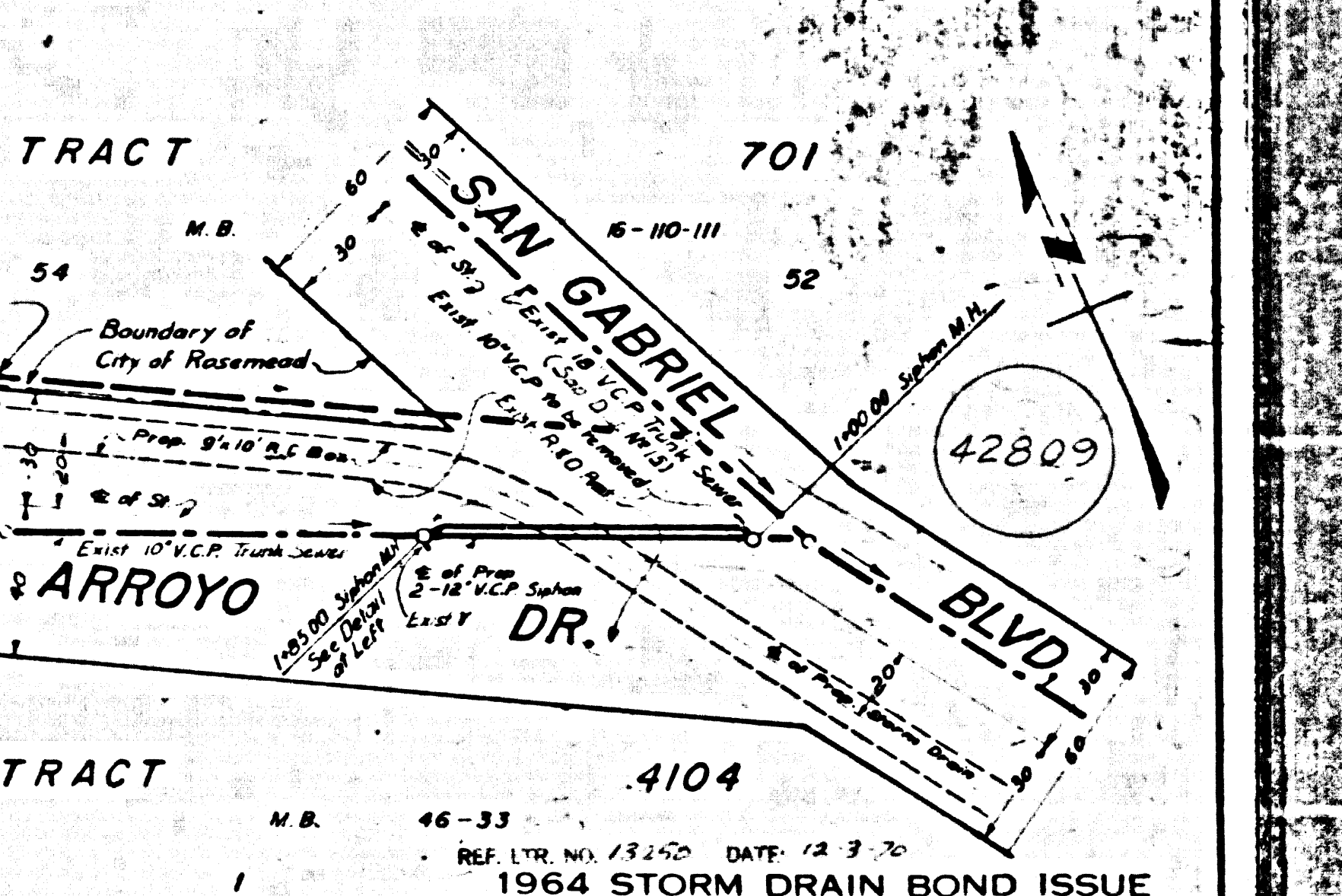
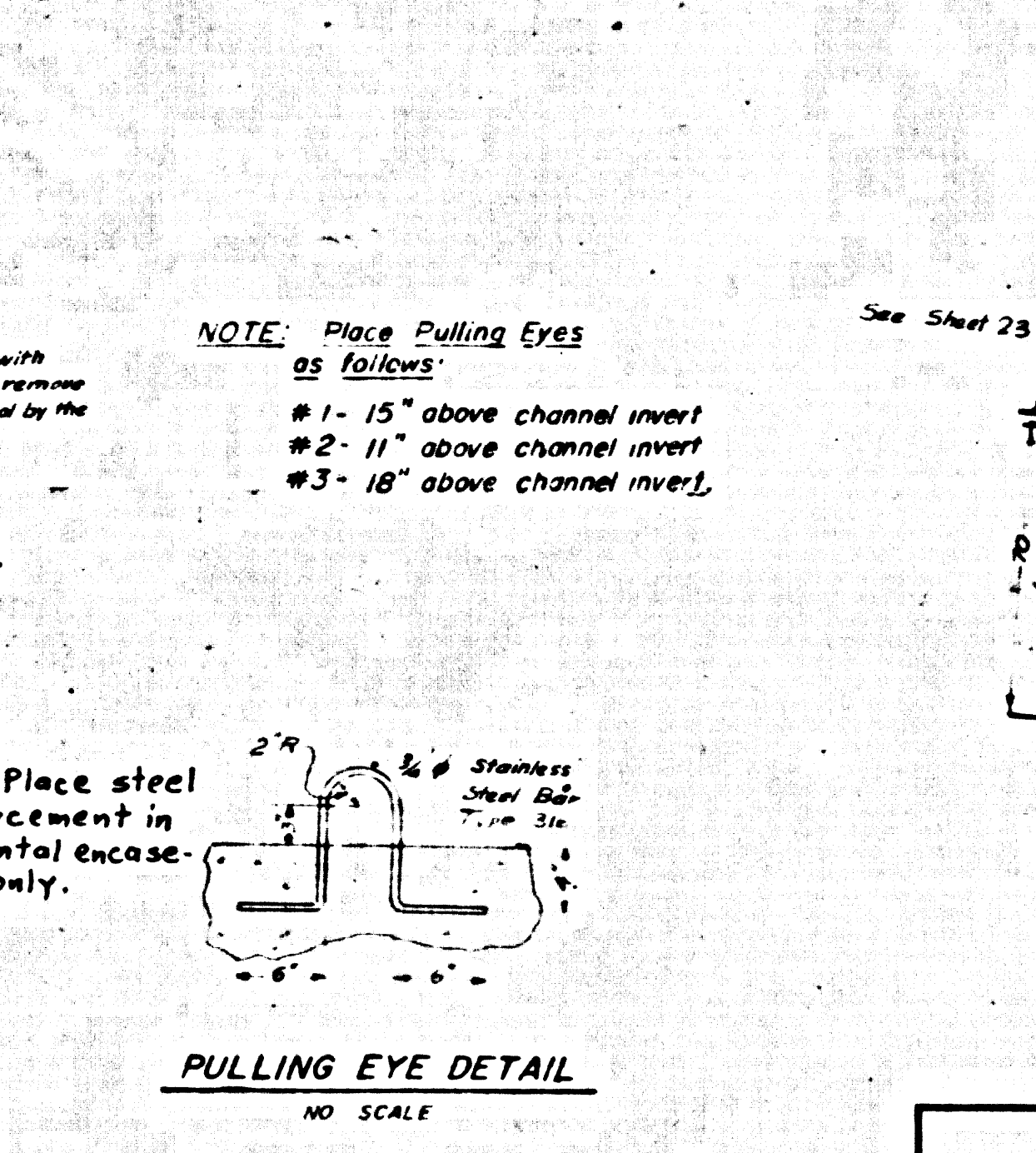
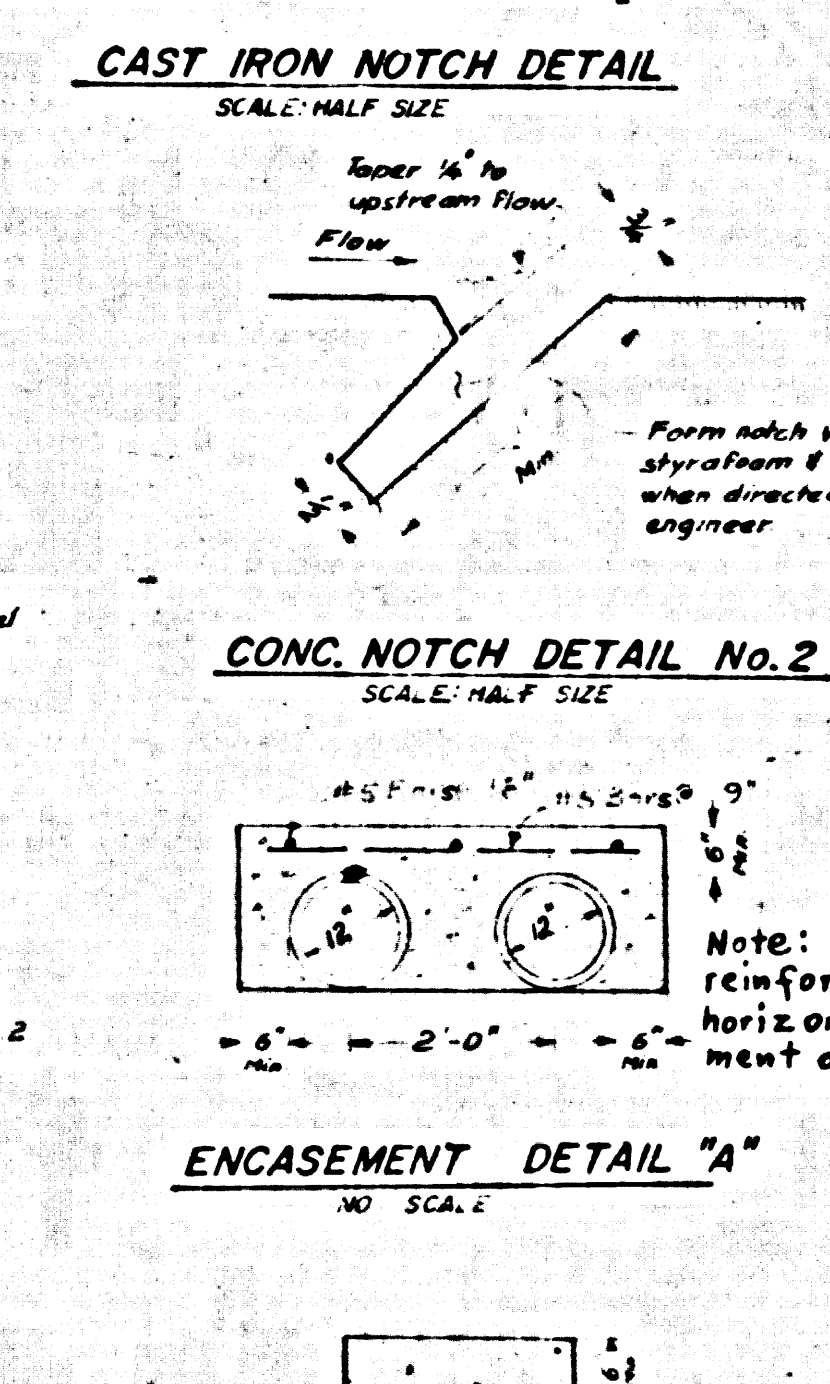
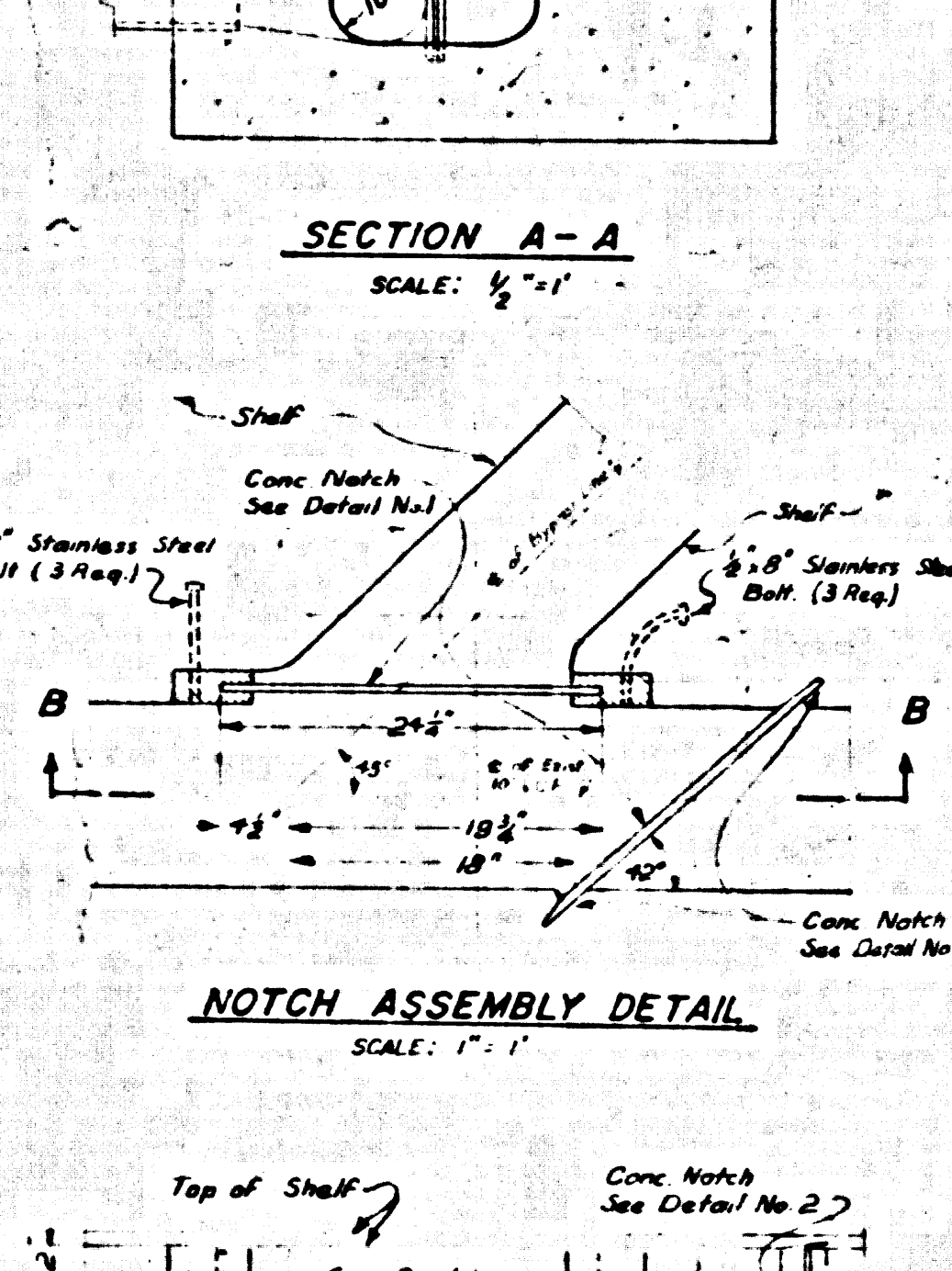
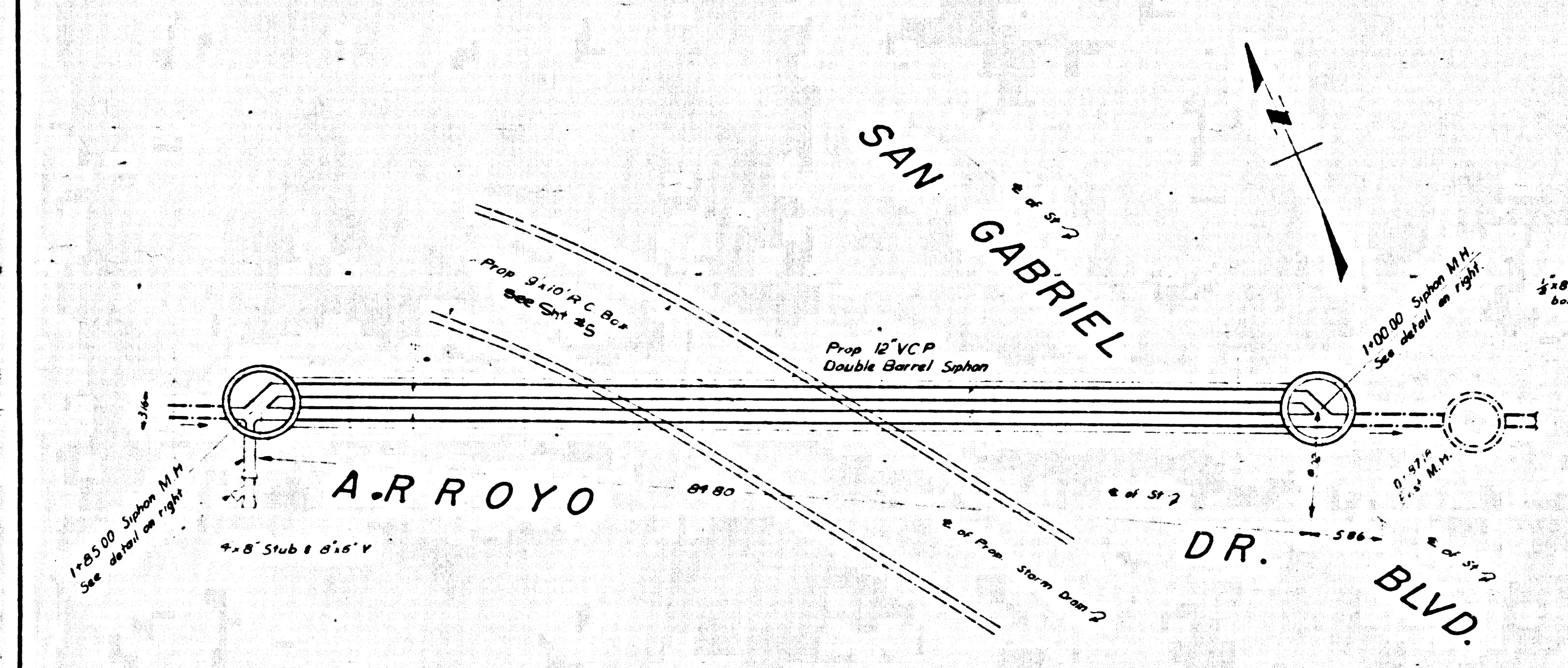
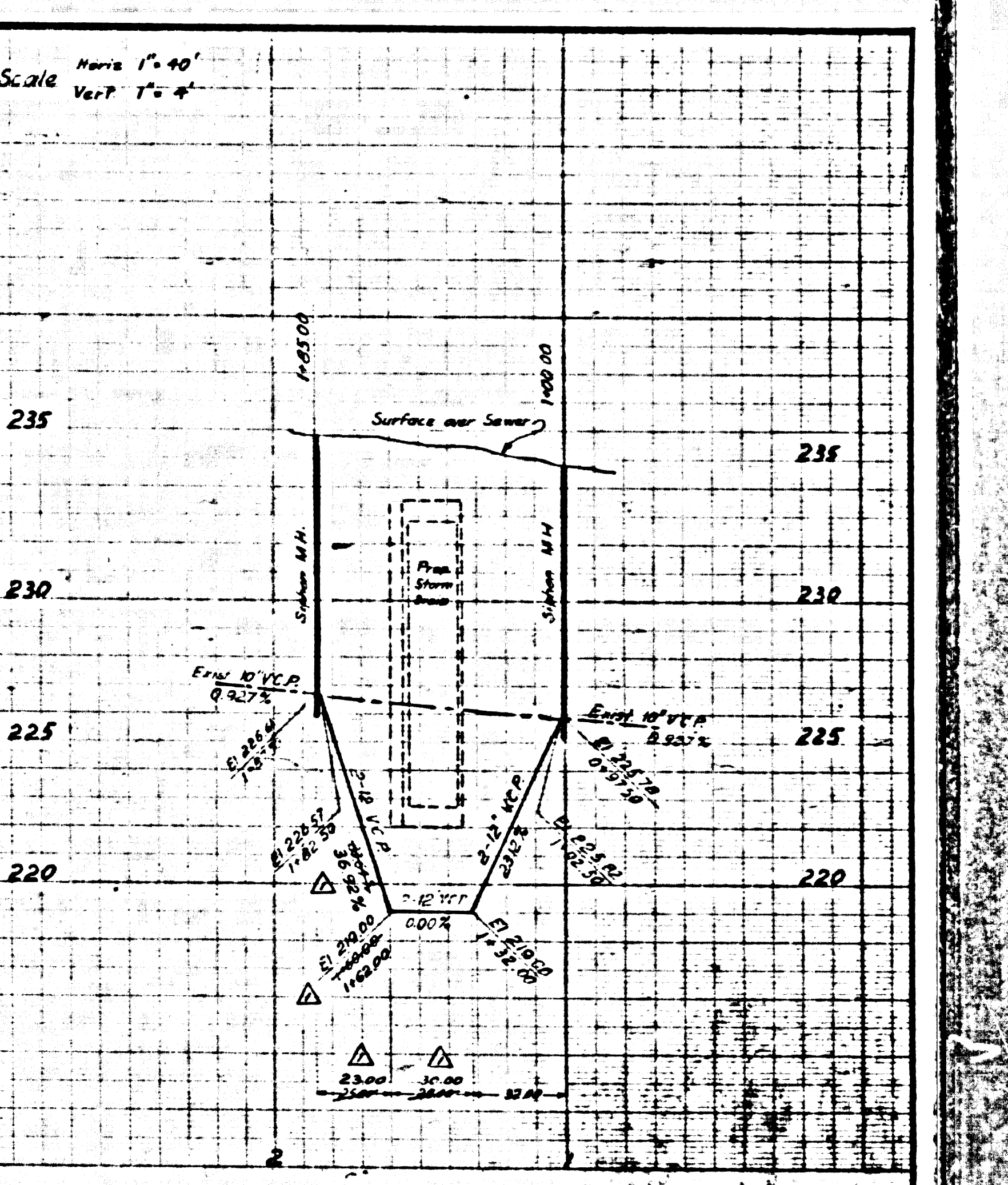


NOTES

- The Contractor shall construct the proposed siphon in such a manner that continuous flow of sewage in the C.S.D. Trunk sewer is not interrupted. The Contractor's method of construction shall be submitted to the County Sanitation District for approval before construction.
- Steel Stop Log shall be coated with "USS Chemical's" coal tar epoxy "Gasket" or approved equal prior to installation in the structure. Minimum thickness of 15 mils total dry film shall be applied in two or more coats. The coal tar epoxy shall be applied in accordance with the manufacturer's recommendation.
- Precast M.H. Top slab shall be reinforced with 16-#6 rebars rather than #4 bars as shown on FT-104.
- Contractor shall notify Robert Powell (636-3097) of the Los Angeles County Sanitation District at least 48 hours prior to commencing construction work on County Sanitation District #15 Sanitary Sewers or appurtenances.
- Siphon M.H.'s are subject to San Dist approval.
- V.C. pipe shall be extra strength with mechanical compression joints.

NO EXHAUSTION IN THE UNDERGROUND INDUSTRIAL WASTES SHALL BE MADE BY SINKS SHOWN ON THIS DRAWING WITHOUT WRITTEN PERMIT FROM THE CHIEF ENGINEER AT THE COUNTY SANITATION DISTRICT.

ALL work performed on the Los Angeles County Sanitation District's sewers shall be done in accordance with the Standard Specifications for the Construction of Sewers and Appurtenances of the County Sanitation Districts together with all pertinent amendments thereto.



REVISIONS		
NO.	DATE	DESCRIPTION
1	11-25-70	Increased horizontal part of Siphon to raise Storm Drain

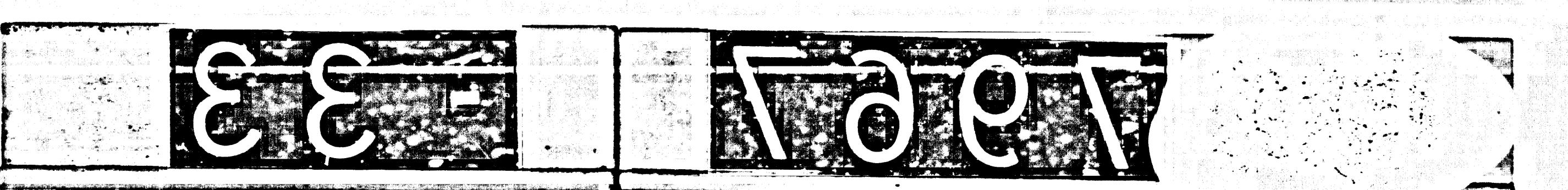
12" V.C.P. DOUBLE BARREL SIPHON
SCALE: HORIZ. 1" = 10' VERT. 1" = 4'

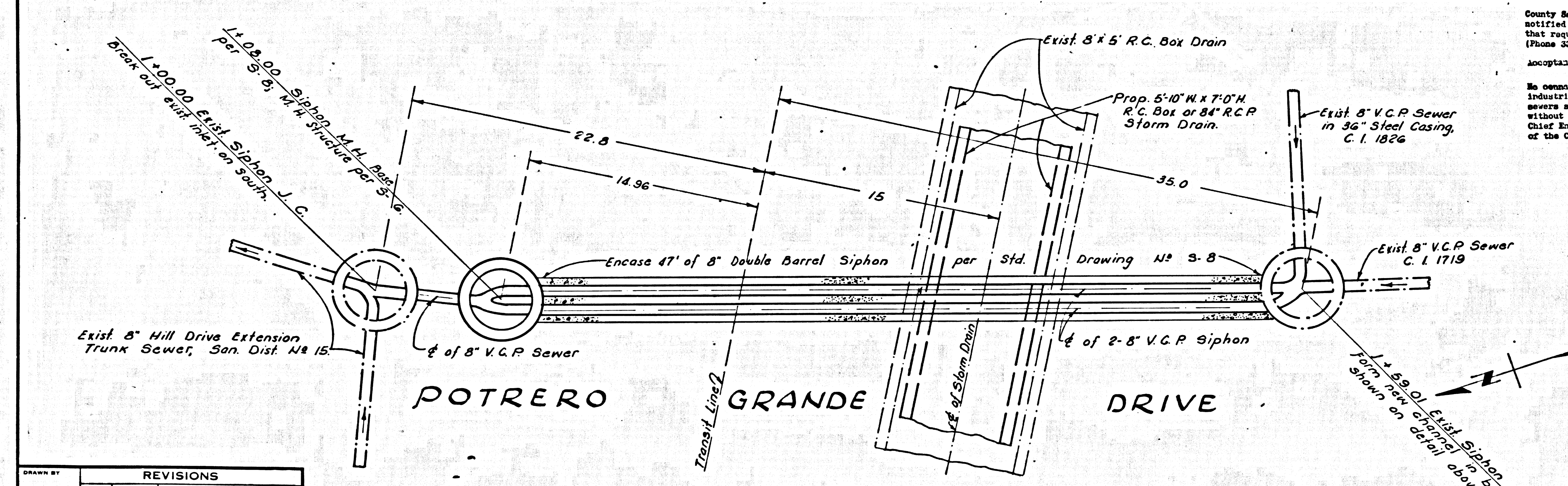
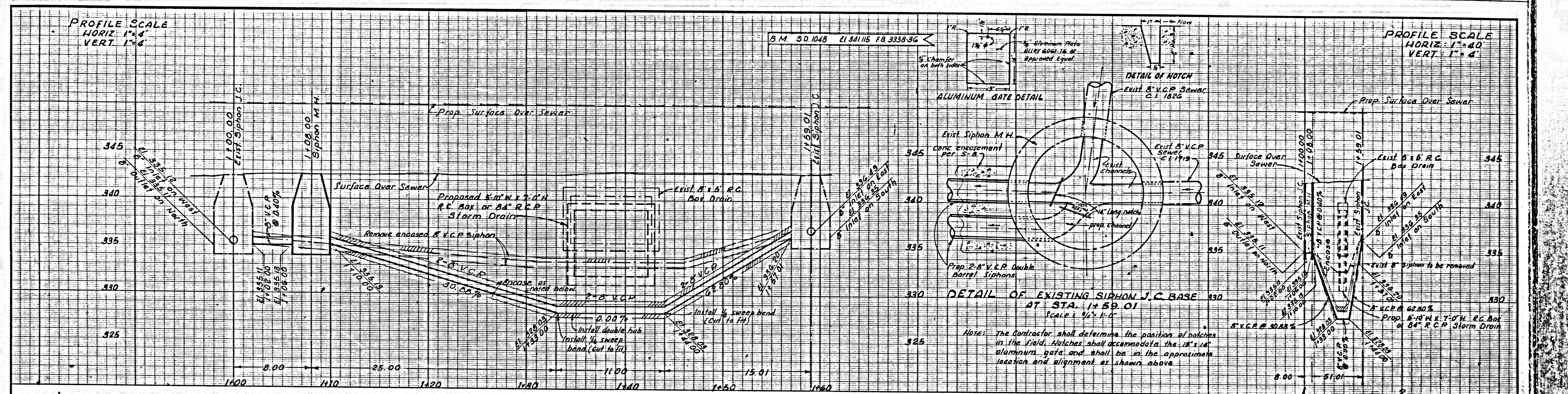
APPROVED
JOHN D. PARKHURST
CHIEF ENGINEER
CO. SAN. DIST. NO. 15

PREPARED BY
JOHN A. LAMBIE
COUNTY ENGINEER
CC. 7967

1964 STORM DRAIN BOND ISSUE
LOS ANGELES COUNTY
FLOOD CONTROL DISTRICT
COUNTY
PROJECT NO. 1225
UNIT 2
SEWER RECONSTRUCTION
CHANGE OF PLAN
PLAN AND PROFILE

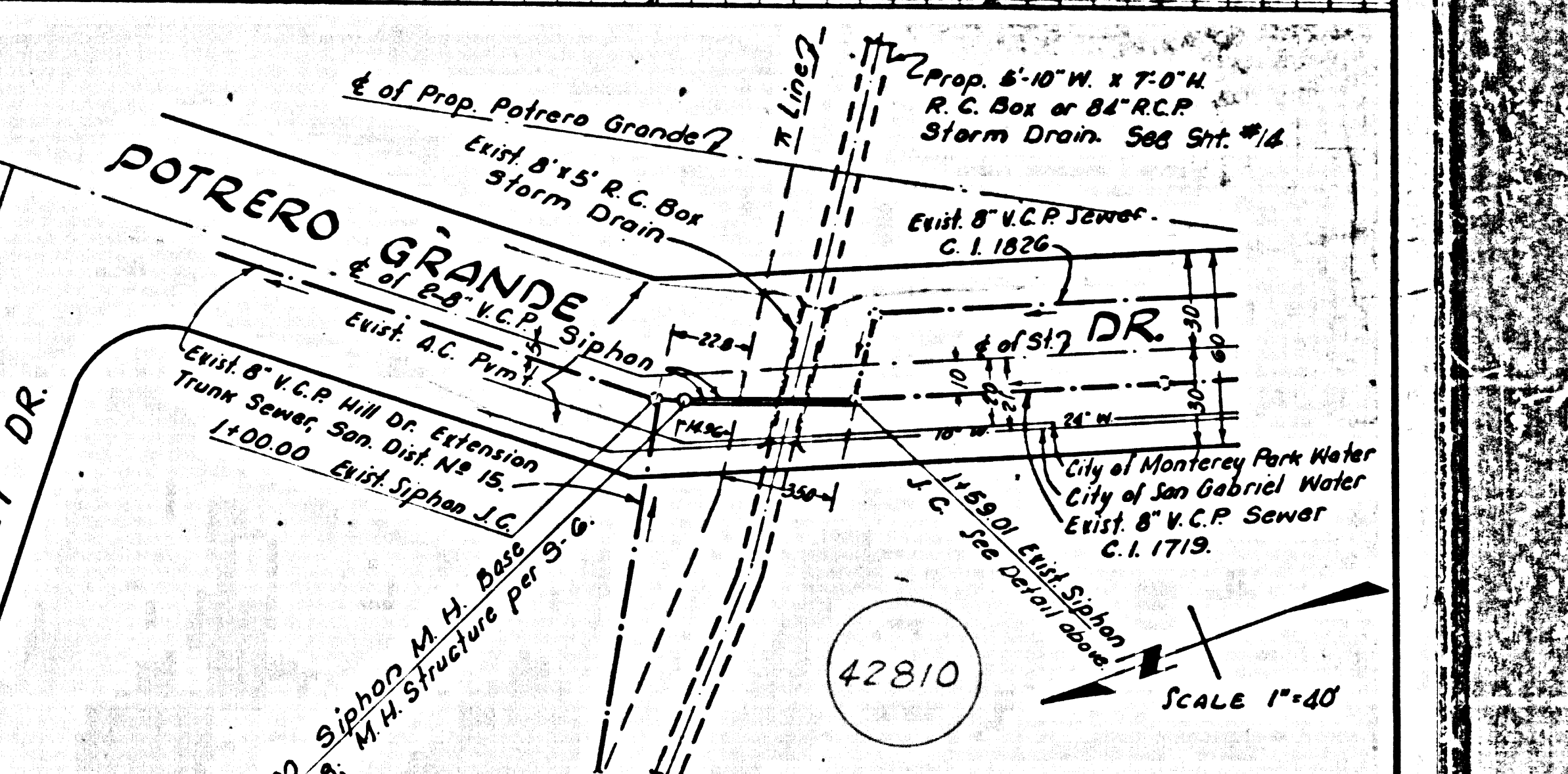
SCALE: AS SHOWN DATE: DEC. 70 DWG. NO. 364-1225-F2 SHEET 35 OF 37





County Sanitation Districts shall be notified prior to the following so that required inspection can be made (Phone 237-1025 - 644-0097) acceptance of the project.

No operations for the disposal of industrial waste shall be made to sewers shown on these drawings without written permission of the Chief Engineer and General Manager of the County Sanitation Districts.



REVISIONS		
MARK	DATE	DESCRIPTION

PROPOSED DOUBLE BARREL 8" V.C.P. SIPHON
Scale: 1"=4'

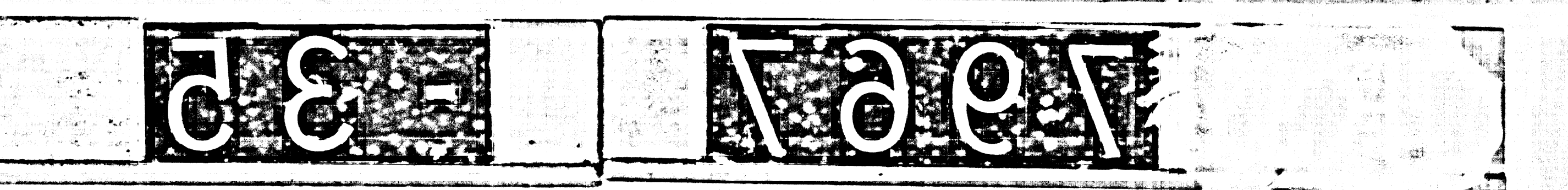
APPROVED:
JOHN D. PARKHURST
CHIEF ENGINEER
CO. SAN. DIST. NO. 15

PREPARED BY
JOHN A. LAMBIE
COUNTY ENGINEER
C.C. 7937
RECOMMENDED BY

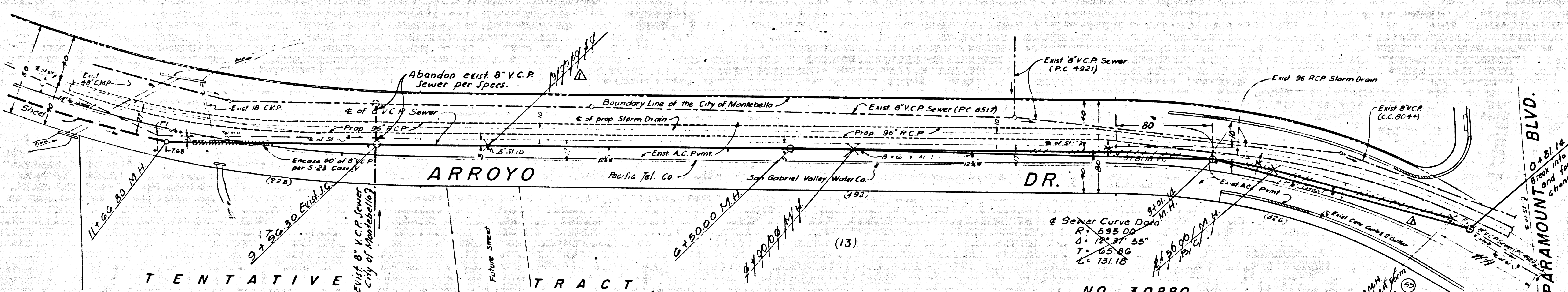
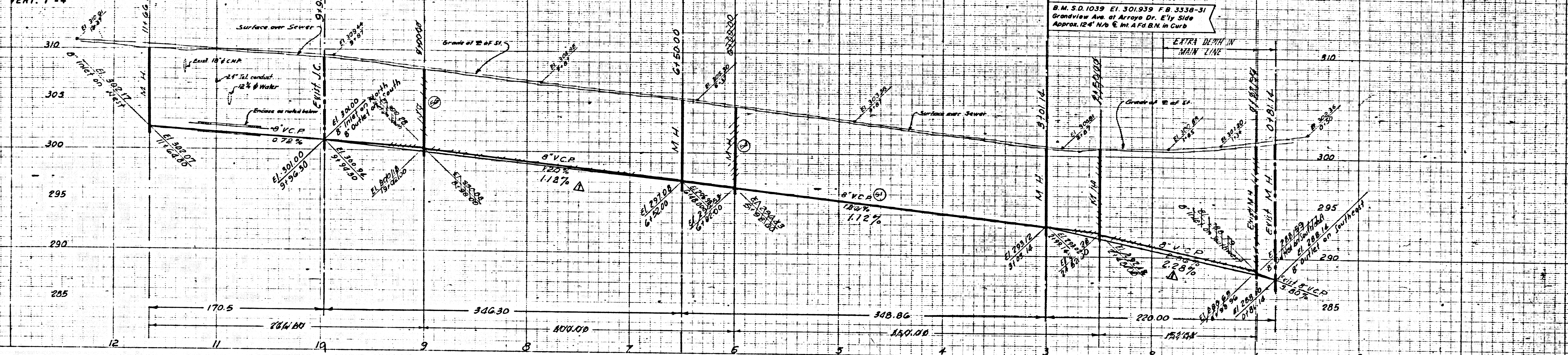
1964 STORM DRAIN BOND ISSUE
LOS ANGELES COUNTY
FLOOD CONTROL DISTRICT

COUNTY
PROJECT NO. 1225
UNIT 2
SEWER RECONSTRUCTION
PLAN AND PROFILE

RECOMMENDED BY	APPROVAL REQUIRED BY
APPROVED BY	
SCALE	DATE
85 SHOWN	
DWG. NO.	
SHEET 55	OF 57



PROFILE SCALE
 HORIZ. 1"=40'
 VERT. 1"=4'



Note: Contact the Montebello City Engineer 24 hours prior to construction in the City of Montebello Tel 722-4100

Construction elevations shall be verified to the following on 1/2\"/>

Responsibility for this project.

No connections for the disposal of industrial wastes shall be made to sewer lines or sewer outfalls without written permission from the Chief Engineer and General Manager of the County Sanitation Districts.

42812

NO.	DATE	DESCRIPTION
1	12-23-70	Changed sewer alignment, grades, & manhole locations.

TENTATIVE TRACT CITY OF MONTEBELLO

NO. 30880

APPROVED
 CITY OF MONTEBELLO
 BY: [Signature]
 DATE: 12-2-70

APPROVED
 JOHN D. PARKHURST
 CHIEF ENGINEER - CO. SAN DIST NO. 10

PREPARED BY
 JOHN A. LAMBIE
 COUNTY ENGINEER
 C.C. 7967
 RECOMMENDED BY
 [Signature]
 COUNTY ENGINEER

1964 STORM DRAIN BOND ISSUE
 LOS ANGELES COUNTY
 FLOOD CONTROL DISTRICT
 COUNTY
 PROJECT NO. 1225
 UNIT 2
 SEWER RECONSTRUCTION
 CHANGE OF PLAN
 PLAN AND PROFILE
 SCALE: 1\"/>

1967 36