

B.M. 11-128 ELEV. 252.431
 WORKMAN MILL RD. & PIONEER BLVD. IN
 S.W. COR. 58' W/O & WORKMAN MILL RD. & 30 3/4'
 PIONEER BLVD. IN WELL PROTECTED BY C.I.
 COVER AND CURB. MIN. SET. 10" BELOW SURFACE
 PRECISE LEVEL LINE 11, 1967

WHITTIER BLDG. DIST. NO. 11

PROFILE, ALIGNMENT AND GRADE OF **P.C. 7970**
SANITARY SEWERS PAGE 1

R/W, N/O. **STRONG AVENUE**

PRIVATE CONTRACT NO. 7970

W.S. 37-5-4
 1 SHEET 2 PAGES

SCALE: VERT. 1" = 4' HORIZ. 1" = 40' OCTOBER, 1967

PREPARED IN THE OFFICES OF
HOPEN, HEDLUND, & DARBY INC.
 3030 W. MAIN ST., ALHAMBRA, CALIF.

BY: *[Signature]*
 REG. C. E. NO. 16078

39488

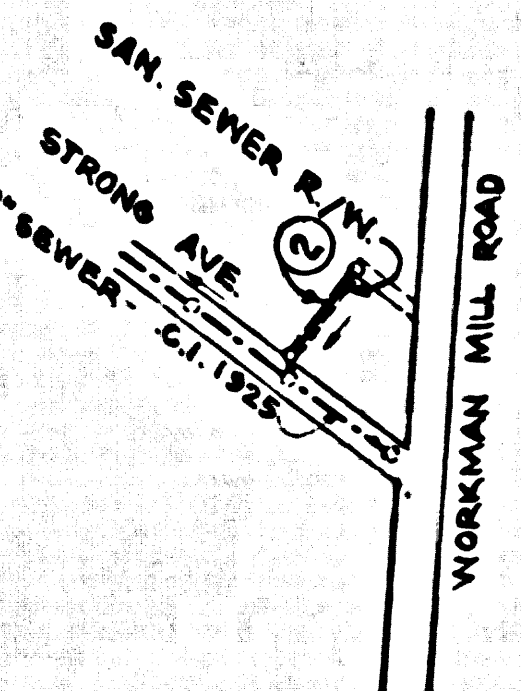
FOR LEGEND SEE PLAN NO. S-1

NOTE:
 GRADES TO WHICH THIS IMPROVEMENT IS TO BE CONSTRUCTED ARE SHOWN ON PLANS AND PROFILES. GRADE POINTS FOR TOP OF CURBS, CENTER LINE OF STREETS, OR CENTER LINE OF ALLEYS ARE SHOWN BY CIRCLES ON PROFILES. AT ALL POINTS BETWEEN DESIGNATED POINTS THE GRADE SHALL BE ESTABLISHED AS TO CORRESPOND TO A STRAIGHT LINE DRAWN BETWEEN SAID DESIGNATED POINTS. ELEVATIONS ARE IN FEET ABOVE U.S.C. & G.S. MEAN SEA LEVEL DATUM OF 1929.
 THE DRAWING AND THE DATA HEREON ARE HEREBY MADE A PART OF THE SPECIFICATIONS AS AMENDED.
 WORK SHALL BE CONSTRUCTED ACCORDING TO STANDARD SPECIFICATIONS DATED JULY 25, 1953, ON FILE IN THE OFFICE OF THE COUNTY ENGINEER AND SHALL BE PROSECUTED ONLY IN THE PRESENCE OF THE COUNTY ENGINEER.
 BEFORE WORK CAN BE STARTED, THE CONTRACTOR MUST OBTAIN A PERMIT TO EXCAVATE IN COUNTY STREETS FROM THE L.A. COUNTY ROAD DEPT., DISTRICT OFFICE NO. 1, AND PAY A FEE TO THE COUNTY ENGINEER, JUDAS HILL COUNTY ENGINEERING BUILDING, 100 WEST SECOND STREET OR "L.O.S. COUNTY ENGINEER, REGIONAL OFFICE, SUPPLEMENT TO CODE OF ORDINANCES, SECTION 12-15-67."
 APPROVAL OF THIS PLAN BY THE COUNTY OF LOS ANGELES DOES NOT CONSTITUTE A REPRESENTATION AS TO THE ACCURACY OF THE LOCATION OF OR THE EXISTENCE OR NON-EXISTENCE OF ANY UNDERGROUND UTILITY PIPE, OR STRUCTURE WITHIN THE LIMITS OF THE PROJECT. THIS NOTE APPLIES TO ALL PAGES.
 IF WORK IS TO BE DONE IN A CITY AND HIGHWAY, A PERMIT MUST BE OBTAINED FROM THE STATE OF CALIFORNIA, DIVISION OF HIGHWAYS, 120 SOUTH SPRING STREET, LOS ANGELES, CALIFORNIA.

COUNTY OF LOS ANGELES, CALIFORNIA
JOHN A. LAMBIE, COUNTY ENGINEER
J. D. PARKHURST, CHIEF ENGINEER
 APPROVED BY: *[Signature]* APPROVED BY: *[Signature]*
 LOS CERRITOS REGIONAL ENGINEER DISTRICT ENGINEER
 12-15-67

CHECKED BY: *[Signature]* 11/13/67
 REG. C.E. NO. 13731

J.N. 0368.78

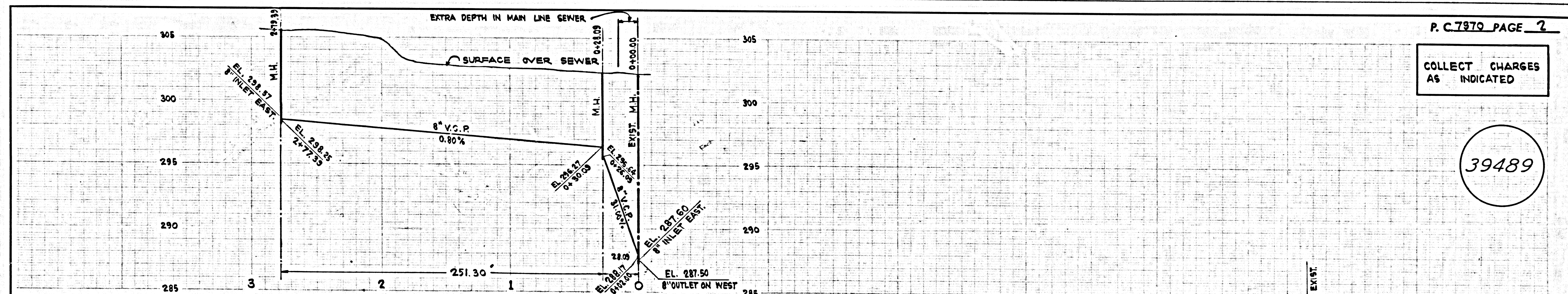


- County Sanitation Districts shall be notified prior to the following so that required inspection can be made (Phone 471-025)
- (1) Commencement of construction of manhole on District trunk sewer.
 - (2) Breaking into existing manhole on District trunk sewer.
 - (3) Core drilling District trunk sewer.
 - (4) Construction of house connections to District trunk sewer.
 - (5) Acceptance of the project.

INDEX MAP
 SCALE 1"=600'
 P.C. 7970

COLLECT CHARGES
 AS INDICATED

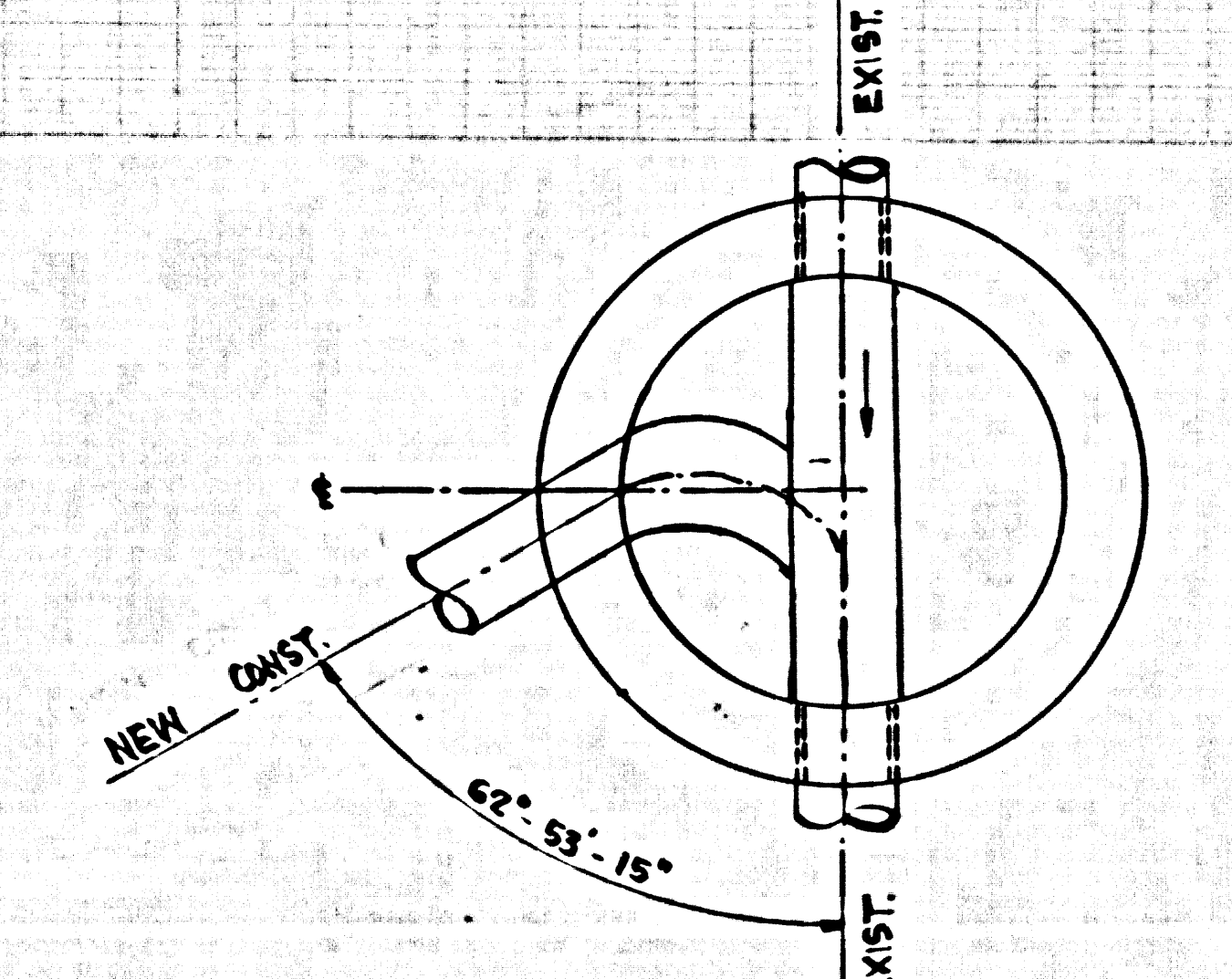
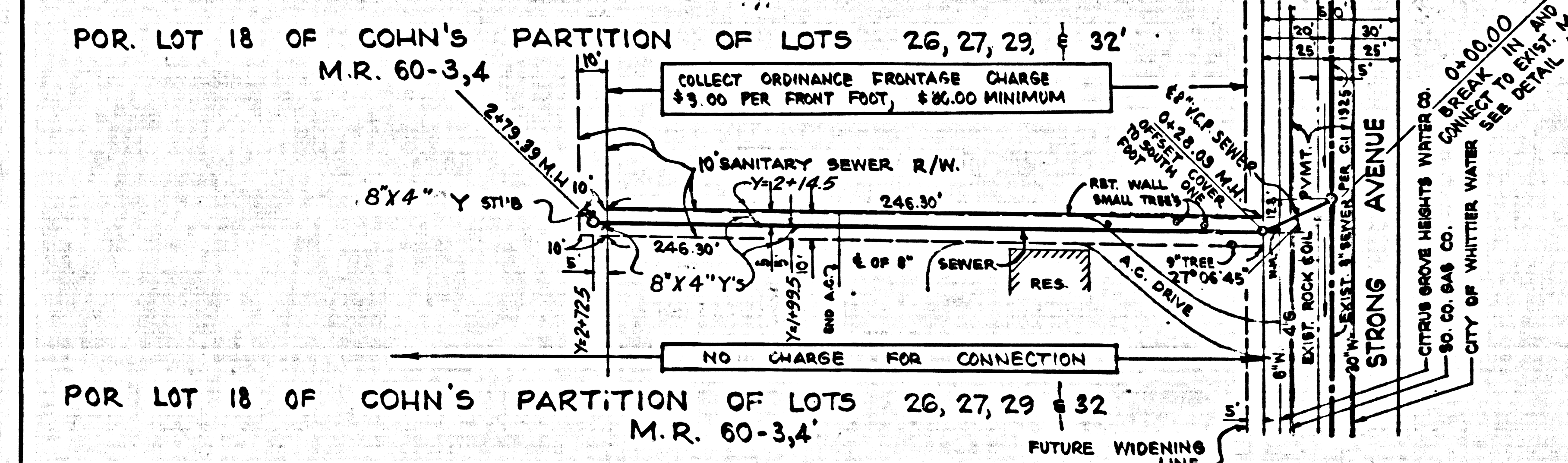
Robert A. Jones 11/13/67



P.C. 7970 PAGE 2

COLLECT CHARGES
 AS INDICATED

39489



DETAIL OF EXIST. M.H. @ STA. 0+00
 NO SCALE