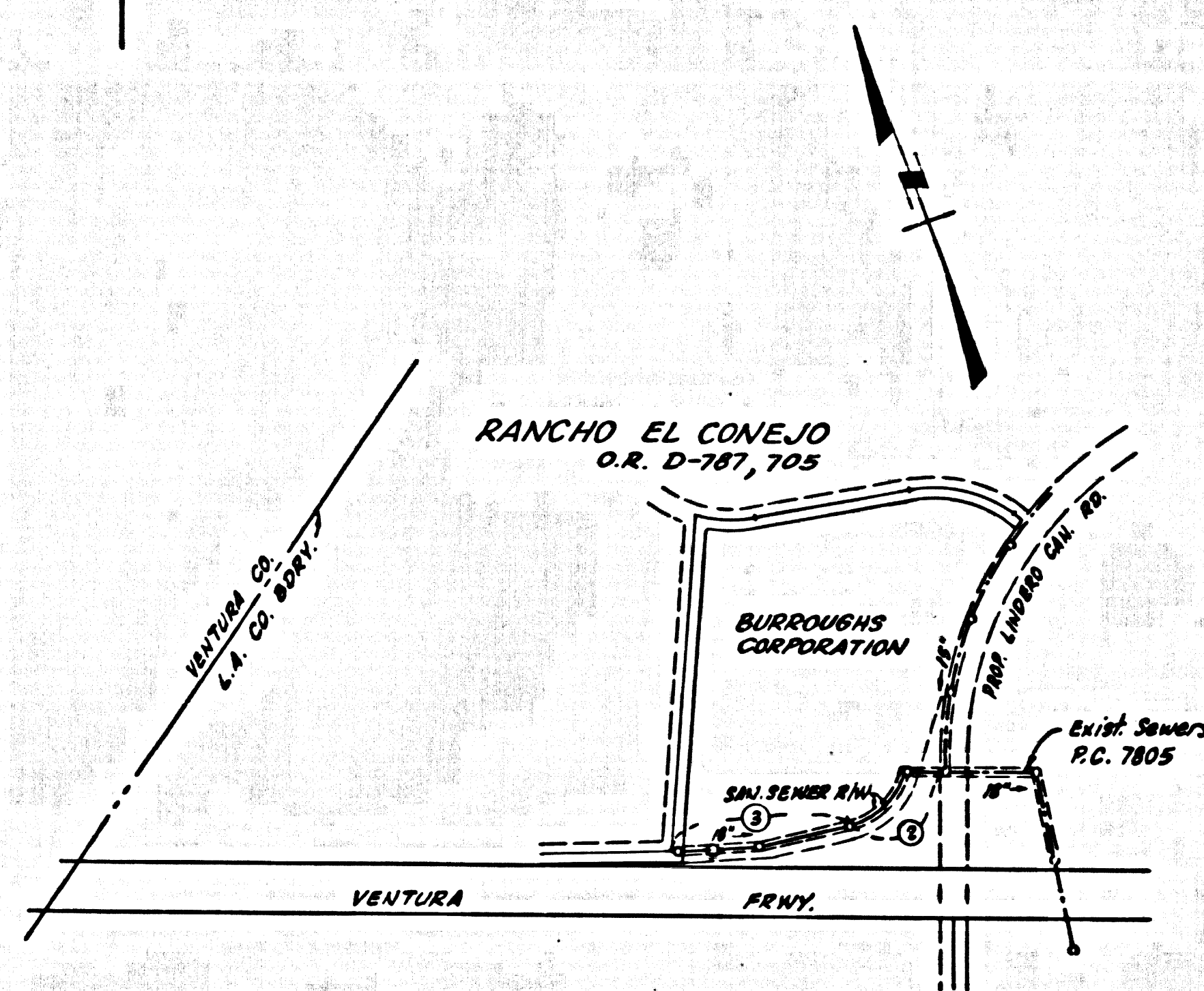


B.M. SY 5638 ELEV. 960.472
 BR. CAP CONC. MAN. 6" IN. DN. ON
 & VENTURA BLDG. @ E.C. 2.4 MI. S
 N. OF CORNELL RD.
 MALIBU QUAD. 19.60



INDEX MAP
 SCALE 1"=400'

THE ACCURACY OF THE LOCATION OF OR THE EXISTENCE OF NON-EXISTENCE OF ANY UTILITY PIPE OR STRUCTURE WITHIN THE LIMITS OF THIS PROJECT DOES NOT CONSTITUTE RESPONSIBILITY BY THE ENGINEER.

TESTING PER LAS VIRGENES MUNICIPAL WATER DISTRICT
 LIMITATION AND LEAKAGE TEST
 METHOD USED FOR TESTING WILL BE THE SAME AS LOS ANGELES COUNTY EXCEPT THE FORMULA TO BE USED IS AS FOLLOWS:
 0.033 GALLONS / MINUTE / INCH OF DIAMETER / 1000 FEET OR
 250 GALLONS / DAY / INCH OF DIAMETER / MILE

MANHOLE LEAKAGE TEST
 AT THE DISCRETION OF THE DISTRICTS REPRESENTATIVE, ONE MANHOLE OUT OF EVERY TEN MANHOLES AND A MINIMUM OF TWO WILL BE FILLED WITH WATER AND AFTER THREE HOURS WILL BE CHECKED FOR LEAKAGE WITH NO DROP IN LEVEL. FOR EVERY MANHOLE NOT PASSING TEST, FIVE MORE WILL BE TESTED AT THE DISCRETION OF THE DISTRICTS REPRESENTATIVE.

AIR TESTING
 WHERE THE DIFFERENCE IN ELEVATION BETWEEN THE INVERT OF THE UPPER STRUCTURE AND THE INVERT OF THE LOWER STRUCTURE IS MORE THAN 3/4 (6) FEET AN AIR TEST WILL BE MADE. THE TIME TAKEN TO LOSE ONE (1) POUND PER SQUARE INCH GAUGE PRESSURE FROM THREE (3) POUNDS PER SQUARE INCH GAUGE PRESSURE TO TWO (2) POUNDS PER SQUARE INCH GAUGE PRESSURE SHALL NOT BE LESS THAN TAKES SHOWN ON THE FOLLOWING TABLE:

MAIN PIPE DIAMETER	MINIMUM TIME LOSS
15" - 18"	1 MINUTE
21" - 30"	3 MINUTES
36" - 48"	4 MINUTES

IF THE TIME IS LESS THAN LISTED IN THE TABLE ABOVE THE CONTRACTOR SHALL MAKE SUCH REPAIRS AS ARE NECESSARY TO ELIMINATE EXCESSIVE LEAKAGE.

P.C. 7975.B
 Construct new M.N. of
 Station 10+71.22
 Page 3 of 3
 Approved Date 6/5/68

DOUBLE SCALE
 CALABASAS BLDG. DIST. NO. 9.1

- PROVIDE STAKES ON THE PROPERTY LINE OR PROPERTY LINES PRODUCED AT RIGHT ANGLES TO THE SEWER LINE AT THE CENTER LINE OF EACH MANHOLE.
- NO REPRESENTATIVE OF THE COUNTY ENGINEER WILL SURVEY OR LAY OUT ANY PORTION OF THE WORK.
- THE PRIVATE ENGINEER SHALL FURNISH THE COUNTY ENGINEER WITH GRADE SHEETS AND STATIONING FOR ALL HOUSE LATERALS AND "T" OR "T" BRANCHES AND SMALL PROFILE STAKES FOR THEM AT THEIR PROPER LOCATIONS WITH STATIONING PLAINLY MARKED. ALL HOUSE LATERALS SHALL BE CONSTRUCTED IN A STRAIGHT ALIGNMENT AT RIGHT ANGLES FROM THE MAIN LINE SEWER EXCEPT AS SHOWN ON THE PLAN. HOUSE LATERALS FROM CHIMNEYS SHALL NOT HAVE AN ANGLE OF LESS THAN 45° WITH THE MAIN LINE SEWER. ANY CHANGE IN ALIGNMENT SHALL BE REQUESTED IN WRITING BY THE PRIVATE ENGINEER.
- THE PRIVATE ENGINEER SHALL FURNISH THE HOUSE LATERAL DEPTH AT THE PROPERTY LINE SHOW THE TOP OF CURB ELEVATION FOR EACH HOUSE LATERAL ON THE GRADE SHEET.
- NO REVISIONS SHALL BE MADE IN THESE PLANS WITHOUT THE APPROVAL OF THE COUNTY ENGINEER.
- THE CONTRACTOR SHALL NOTIFY THE CONSTRUCTION DIVISION BY TELEPHONE, SECTION 900-6, EXT. 81381, AT LEAST TWENTY-FOUR HOURS BEFORE STARTING ANY WORK UNDER THIS CONTRACT.
- ALL STRUCTURES SHALL BE OTHER THAN MANHOLES PER S-3 ON PRECAST CONCRETE MANHOLES PER S-3 OR S-4, EXCEPT AS NOTED.
- "T" OR "T" BRANCHES SHALL BE CLEAR PER CONNECTIONS TO MANHOLE BENCHES, EXCEPT AS NOTED.
- MANHOLE TOPS IN UNIMPROVED BUILT-UP WAYS TO BE SIX INCHES ABOVE FINISHED GRADE.
- USE EXTRA STRENGTH PIPE, ALL PIPES IN STANDARD DEPTH EXCEPT AS NOTED.
- WITRIFIED CLAY PIPE JOINTS SHALL BE TYPE "D" PER STD. SPEC., SEC. 202-2.
- IF A POWER POLE IS WITHIN THREE FEET OF THE SEWER, THE SEWER SHALL BE ENCASED PER S-23, TWO FEET ON EACH SIDE FROM THE POINT OF INTERFERENCE.
- IF DURING THE COURSE OF CONSTRUCTION IT IS DETERMINED THAT THERE IS LESS THAN FOUR FEET OF COVER OVER THE TOP OF A MAIN LINE OR HOUSE LATERAL V.C.P. SEWER WHICH IS NOT INDICATED ON THE PLAN, THE PIPE SHALL BE ENCASED PER S-24, UNLESS OTHERWISE APPROVED BY THE COUNTY ENGINEER.
- HOUSE LATERALS TO BE CONSTRUCTED WITH INVERTS AT PROPERTY LINE 6 FEET BELOW CURB GRADE EXCEPT AS NOTED.
- REINFORCE ALL TRENCHES WITHIN PAVED AREAS TO MEET L.A. COUNTY ROAD DEPT. OR CALIFORNIA STATE HIGHWAY REQUIREMENTS IN ACCORDANCE WITH PERMITS.
- SEWERS TO BE TESTED FOR LEAKAGE PER SECTION 304-B-2, STANDARD SPECIFICATIONS.
- ALL STATE AND LOCAL TRENCH SAFETY ORDERS WILL BE STRICTLY ENFORCED.
- SPECIAL BACKFILL IN REPAIRING AREAS.
- IN BACKFILL TRENCH AND REPAIR OTHER HAZARD REMOVED SO AS TO ACHIEVE THE NATURAL OR FINISHED GRADES AND SLOPES SHOWN ON THE GRADING PLAN APPROVED FOR THIS TRACT BY THE BUILDING AND SAFETY DIVISION.
- IN BACKFILL TRENCH AND REPAIR OTHER HAZARD REMOVED SO AS TO ACHIEVE THE NATURAL OR FINISHED GRADES AND SLOPES SHOWN ON THE GRADING PLAN APPROVED FOR THIS TRACT BY THE BUILDING AND SAFETY DIVISION.
- BRICK MANHOLES PER S-3 SHALL HAVE 12" BRICKWORK BELOW DECK.
- WHERE DEPTH OF MAIN LINE IS MORE THAN 20 FEET, UNLESS OTHERWISE SHOWN ON PLAN, PIPE SHALL BE CHASED PER S-23. IF WIDTH OF TRENCH AT TOP OF PIPE EXCEEDS 6 FEET, 20" CROWN OF HOUSE LATERAL SHALL BE ENCASED PER S-23, INSTEAD OF CRADLED.
- ALL WELDS BETWEEN CAST IRON PIPE AND WITRIFIED CLAY PIPE SHALL BE MADE WITH A RUBBER SLEEVE JOINT, TYPE "D" PER STD. SPEC. (WITH BUSHING IF NECESSARY) PER STANDARD SPECIFICATIONS, SECTION 202-2.

COLLECT CHARGES AS INDICATED

THE FOLLOWING COUNTY ENGINEER STANDARD PLANS APPLY TO THIS PROJECT:

LEAKAGE	P-1
BRICK MANHOLE	P-2
CONCRETE MANHOLE	P-3
REINFORCED PRECAST CONCRETE MANHOLE	P-4
MANHOLE JOINTS AND COVER	P-5
MANHOLE TOP	P-6
REPAIR AND REPAIR PER	P-7
CRADLING AND ENCASEMENT	P-8
PIPE AT THE SURFACE	P-9
ALLOWABLE TRENCH WIDTHS	P-10

PROFILE ALIGNMENT AND GRADE OF
 SANITARY SEWERS P.C. 7975
 TO BE CONSTRUCTED TO
 SERVE THE
 BURROUGHS CORPORATION

PRIVATE CONTRACT NO. 7975

W.S. 93
 2 SHEETS; 3 PAGES
 NOVEMBER 1967

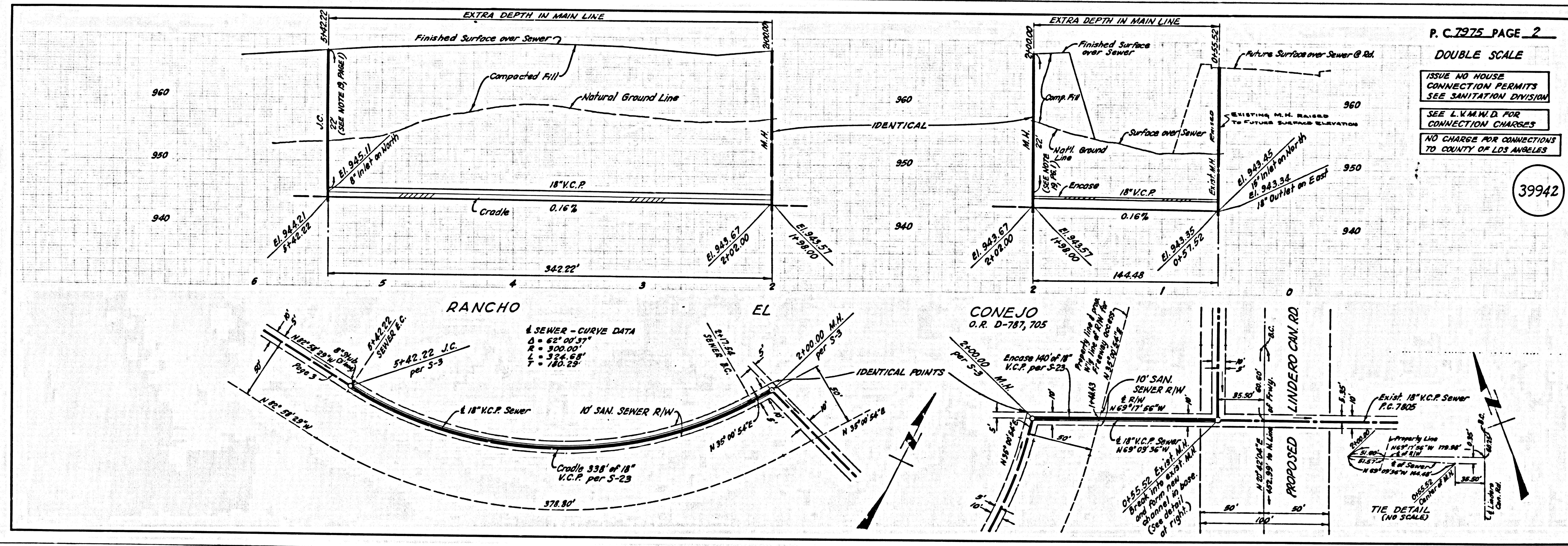
PREPARED IN THE OFFICES OF
 MCINTYRE & QUIROS, INC.
 670 MONTESEY PASS ROAD
 MONTESEY PASS, CALIF.
 REG. C. E. NO. 18812

FOR LEGEND SEE PLAN NO. S-1

NOTE:
 GRADES TO WHICH THIS IMPROVEMENT IS TO BE CONSTRUCTED ARE SHOWN ON PLANS AND PROFILE GRADE POINTS FOR TOP OF CURB, CENTER LINE OF STREETS OR CENTER LINE OF ALLEYS ARE SHOWN BY CIRCLES ON PROFILE. AT ALL POINTS BETWEEN DESIGNATED POINTS THE GRADE SHALL BE ESTABLISHED SO AS TO CONFORM TO A STRAIGHT LINE DRAWN BETWEEN SAID DESIGNATED POINTS. THE FINISHED AND THE EXTRA DEPTH ARE TO BE ABOVE U.S.C. & G.S. SEA LEVEL DATUM ON THE PROFILE. THE FINISHED AND THE EXTRA DEPTH ARE TO BE ABOVE U.S.C. & G.S. SEA LEVEL DATUM ON THE PROFILE. WORK SHALL BE CONSTRUCTED ACCORDING TO THE UNIFORM STANDARD SPECIFICATIONS FOR PUBLIC WORKS CONSTRUCTION AND COUNTY ENGINEER SPECIAL SPECIFICATIONS FOR SANITARY SEWERS, AND SHALL BE PROSECUTED ONLY IN THE PRESENCE OF THE COUNTY ENGINEER. BEFORE THE CONTRACTOR MUST OBTAIN A PERMIT TO EXCAVE IN COUNTY STREETS FROM THE L.A. COUNTY ROAD DEPT., DISTRICT OFFICE NO. 1 AND PAY A FEE TO THE COUNTY ENGINEER, ROOM 332, COUNTY ENGINEER BUILDING, 1101 W. SECOND STREET OF THE COUNTY OF LOS ANGELES, CALIFORNIA. APPROVAL OF THIS PLAN BY THE COUNTY OF LOS ANGELES DOES NOT CONSTITUTE A REPRESENTATION AS TO THE ACCURACY OF THE LOCATION OR OF THE EXISTENCE OR NON-EXISTENCE OF ANY UNDERGROUND UTILITY PIPE, OR STRUCTURE WITHIN THE LIMITS OF THIS PROJECT. THIS NOTE APPLIES TO ALL PAGES. IF WORK IS TO BE DONE IN A STATE HIGHWAY, A PERMIT MUST BE OBTAINED FROM THE STATE OF CALIFORNIA, DIVISION OF HIGHWAYS, 120 SOUTH BRIDGE STREET, LOS ANGELES, CALIFORNIA.

COUNTY OF LOS ANGELES, CALIFORNIA
 LAS VIRGENES MUNICIPAL WATER DISTRICT
 JOHN A. LAMBIE, COUNTY ENGINEER
 APPROVED BY: [Signature] REGIONAL ENGINEER
 APPROVED BY: [Signature] GENERAL MANAGER - CHIEF ENGINEER

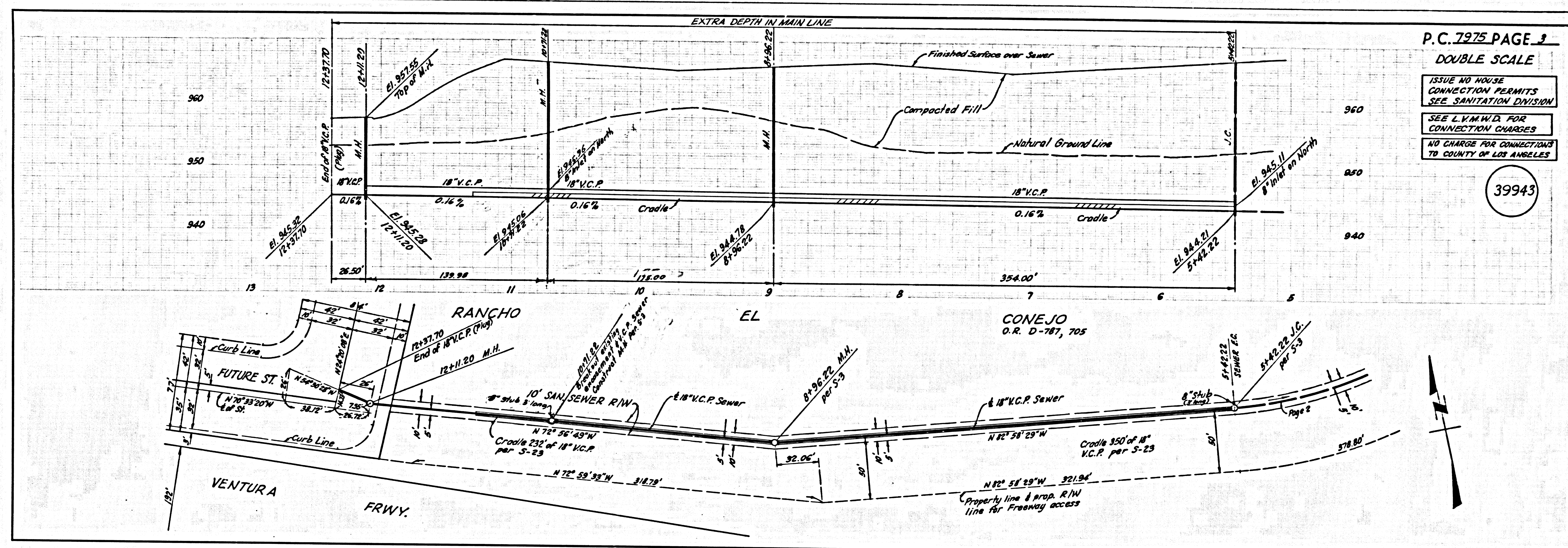
J. N. 0368.80



P. C. 7975 PAGE 2
 DOUBLE SCALE

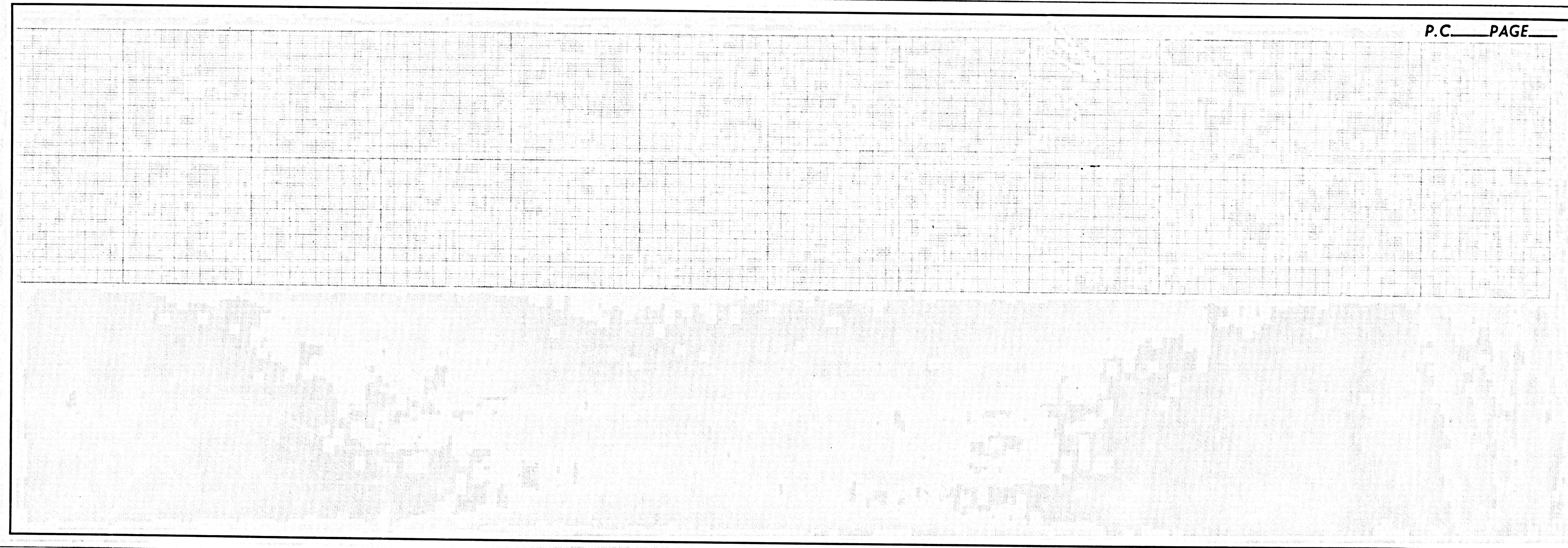
ISSUE NO HOUSE CONNECTION PERMITS SEE SANITATION DIVISION
 SEE L.V.M.W.D. FOR CONNECTION CHARGES
 NO CHARGE FOR CONNECTIONS TO COUNTY OF LOS ANGELES

39942



P.C. 7975 PAGE 3
 DOUBLE SCALE
 ISSUE NO HOUSE
 CONNECTION PERMITS
 SEE SANITATION DIVISION
 SEE L.V.M.W.D. FOR
 CONNECTION CHARGES
 NO CHARGE FOR CONNECTIONS
 TO COUNTY OF LOS ANGELES

39943



P.C. PAGE