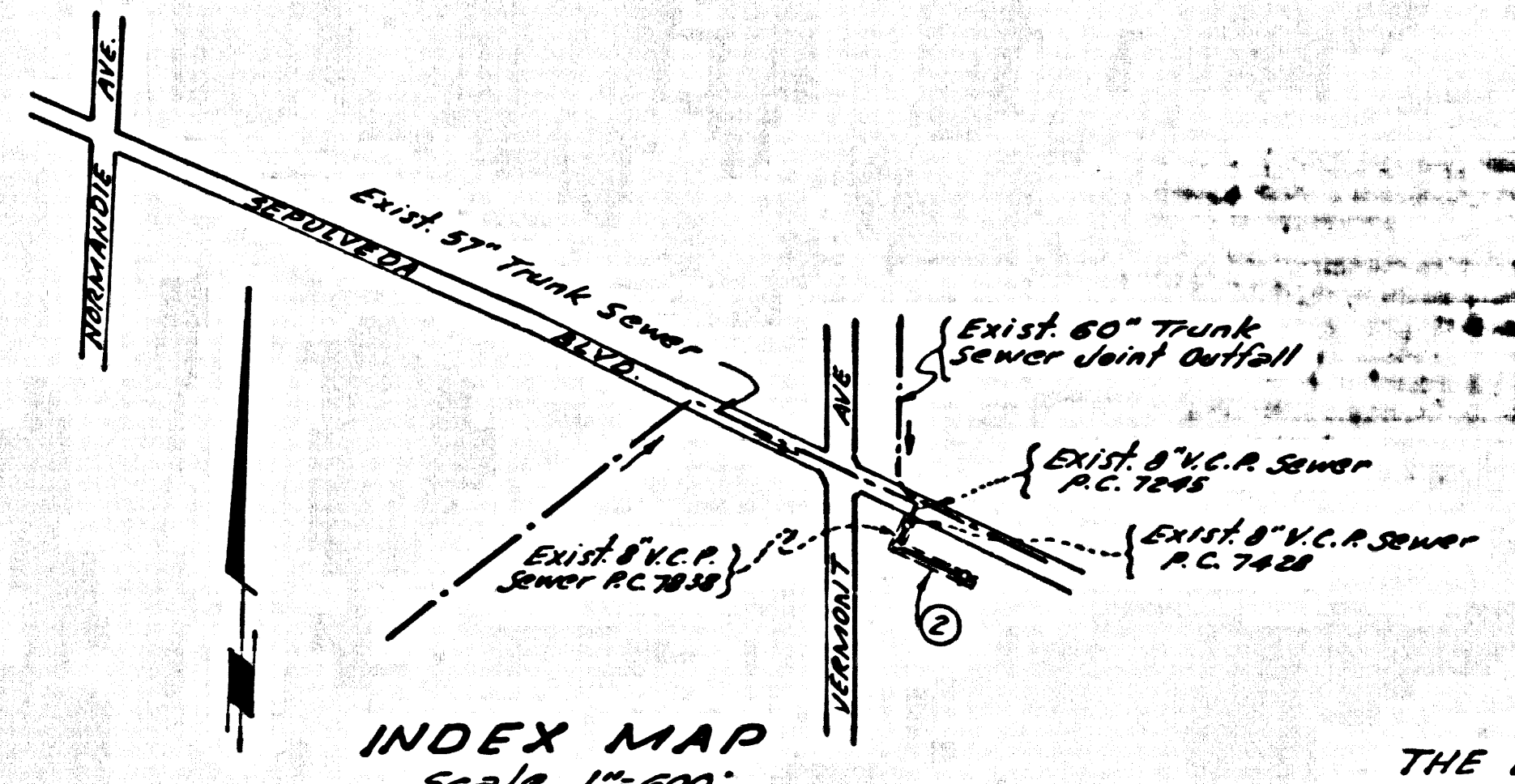


B.M. SY-3071.A ELEV. 33.103
 E.d. square head spike near
 center of curb return N.E. corner
 Lomita Blvd. and Vermont Ave.
 1" North of L.F.T.
 Base Line QUAD. 19 55



INDEX MAP
 Scale 1"=600'
 P.C. 7976

- County Sanitation Districts shall be notified prior to the following so that required inspection can be made (Phone NE. 63097)
- (1) Commencement of construction of manholes on District-trunk sewer.
 - (2) Breaking into existing manhole on District Crank sewer.
 - (3) Core Artling District trunk sewer.
 - (4) Construction of house connections to District trunk sewer.
 - (5) Acceptance of the project.

THE FOLLOWING COUNTY ENGINEER STANDARD PLANS APPLY TO THIS PROJECT

LEGEND	S-1
MINIMUM EXCAVATION	S-2
SAFETY REQUIREMENTS	S-3
BRICK MANHOLE	S-4
NON REINFORCED PRECAST CONCRETE M.H.	S-5
MANHOLE FRAME & COVER	S-13
STANDARD MANHOLE STEP	S-17
BEDDINGS FOR SEWER	S-21
GRADINGS & ENGAGEMENT	S-22
WYE OF TEE SUPPORT	S-26
ALLOWABLE TRENCH WIDTHS	S-33

NO CONNECTIONS FOR THE DISPOSAL OF INDUSTRIAL WASTES SHALL BE MADE TO SEWERS SHOWN ON THESE DRAWINGS WITHOUT WRITTEN PERMISSION FROM THE CHIEF ENGINEER AND GENERAL MANAGER OF THE COUNTY SANITATION DISTRICTS.

LOMITA ~ BLDG. DIST. NO. 12

- NOTES:
1. PROVIDE STAKES ON THE PROPERTY LINE OR PROPERTY LINES PRODUCE AT RIGHT ANGLES TO THE SEWER LINE AT THE CENTER LINE OF EACH MANHOLE.
 2. NO REPRESENTATIVE OF THE COUNTY ENGINEER WILL SURVEY OR LAY OUT ANY PORTION OF THE WORK.
 3. THE PRIVATE ENGINEER SHALL FURNISH THE COUNTY ENGINEER WITH GRADE SHEETS AND STATIONING FOR ALL HOUSE LATERALS AND "T" OR "Y" BRANCHES AND SHALL PROVIDE STAKES FOR THEM AT THEIR PROPER LOCATIONS WITH STATIONING PLAINLY MARKED. ALL HOUSE LATERALS SHALL BE CONSTRUCTED IN A STRAIGHT ALIGNMENT AT RIGHT ANGLES FROM THE MAIN LINE SEWER EXCEPT AS SHOWN ON THE PLANS. HOUSE LATERALS FROM CHIMNEYS SHALL NOT HAVE AN ANGLE OF LESS THAN 45° WITH THE MAIN LINE SEWER. ANY CHANGE IN ALIGNMENT SHALL BE REQUESTED BY WRITING BY THE PRIVATE ENGINEER.
 4. THE PRIVATE ENGINEER SHALL FURNISH THE HOUSE LATERAL BOPHS AT THE PROPERTY LINE BELOW THE TOP OF CURB ELEVATION FOR EACH HOUSE LATERAL ON THE GRADE SHEET.
 5. NO REVISIONS SHALL BE MADE IN THESE PLANS WITHOUT THE APPROVAL OF THE COUNTY ENGINEER.
 6. THE CONTRACTOR SHALL NOTIFY THE CONSTRUCTION DIVISION BY TELEPHONE, HARBOR 9-82, EXT. 8188, AT LEAST TWENTY-FOUR HOURS BEFORE STARTING ANY WORK UNDER THIS CONTRACT.
 7. All structures shall be built under structures per S-3 or precast concrete manholes per S-5 or S-6, except as noted.
 8. USE STANDARD MANHOLE FRAMES AND COVERS, S-14, EXCEPT AS NOTED.
 9. MANHOLE TOPS IN UNIMPROVED HIGHWAYS OR WAYS TO BE SIX INCHES ABOVE FINISHED GRADE.
 10. USE EXTRA STRENGTH PIPE, ALL PIPE AS SHOWN AND EXCEPT AS NOTED.
 11. UNTESTED CLAY PIPE UNITS SHALL BE TYPE "A", 18" OR 24" PER STD. SPEC. SEC. 204-2.
 12. IF A POWER POLE IS WITHIN THREE FEET OF THE SEWER, THE SEWER SHALL BE BICASED, PER S-23, TWO FEET ON EACH SIDE FROM THE POINT OF INTERFERENCE.
 13. IF DURING THE COURSE OF CONSTRUCTION IT IS DETERMINED THAT THERE IS LESS THAN FOUR FEET OF COVER OVER THE TOP OF A MAIN LINE OR HOUSE LATERAL V.C.P. SEWER WHICH IS NOT INDICATED ON THE PLANS, THE PIPE SHALL BE BICASED PER S-23, UNLESS OTHERWISE APPROVED BY THE COUNTY ENGINEER.
 14. HOUSE LATERALS TO BE CONSTRUCTED WITH SERVICE AT PROPERTY LINE & FEET SHOW CURB GRADE EXCEPT AS NOTED.
 15. RESURFACE ALL TRENCHES WITHIN PAVED AREAS TO MEET L.A. COUNTY ROAD DEPT. OR CALIFORNIA STATE HIGHWAY REQUIREMENTS IN ACCORDANCE WITH PERMITS.
 16. SEWERS TO BE TESTED AND CHANGED PER SECTION 104 - P. 2.3. STD. SPECIFICATIONS.
 17. ALL STATE AND LOCAL TRENCH SAFETY ORDERS WILL BE STRICTLY ENFORCED.
 18. "T" or "Y" branches may be used for connections to main line sewers, except as noted.

COLLECT CHARGES AS INDICATED
 P. Jones 1/18/67

NOTICE TO CONTRACTOR
 The existence and location of any underground utility pipes or structures shown on these plans are obtained by a search of the available records. To the best of my knowledge there are no existing utilities not so shown on these plans. The contractor is required to take due precautionary measures to protect the utility lines shown and any other lines not of record or not shown on these plans.
 Fred J. Jones
 P.E. 15857

TO BE CONSTRUCTED IN
 TRACT No 23903
 RIGHT OF WAY SOUTH OF SEPULVEDA BLVD
 PRIVATE CONTRACT NO. 7976

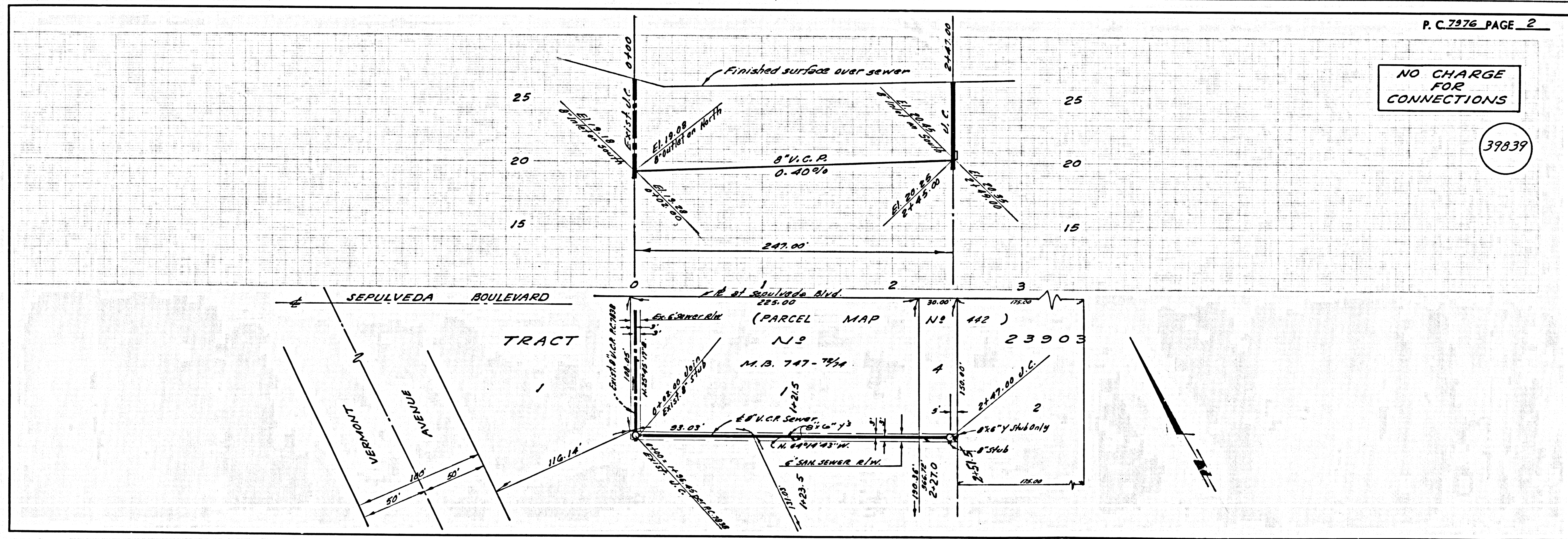
W.S. 28
 1 SHEET OF 2 PAGES
 SCALE: VERT. 1"=4'
 HORIZ. 1"=40'
 OCTOBER, 1967
 39838
 PREPARED BY THE OFFICES OF
 E. L. PEARSON AND ASSOCIATES
 By Paul J. Pearson 10-30-67
 REG. C.E. NO. 15227
 FOR LEGEND SEE PLAN NO. S-1

NOTE:
 GRADES TO WHICH THIS IMPROVEMENT IS TO BE CONSTRUCTED ARE SHOWN ON THESE PLANS AND PROFILES. GRADE POINTS FOR TOP OF CURBS, CENTER LINE OF STREETS, OR CENTER LINE OF ALLEYS ARE SHOWN BY CIRCLES ON PROFILES. AT ALL POINTS BETWEEN DESIGNATED POINTS THE GRADE SHALL BE ESTABLISHED AS TO CORNER TO A STRAIGHT LINE BETWEEN SAID DESIGNATED POINTS. THE GRAVING AND THE DATA HEREON ARE HEREBY MADE A PART OF THE SPECIFICATIONS.
 WORK SHALL BE CONSTRUCTED ACCORDING TO STANDARD SPECIFICATIONS FOR PUBLIC UTILITY CONSTRUCTION AND SHOWN THEREIN UNLESS OTHERWISE NOTED. THE CONTRACTOR SHALL OBTAIN A PERMIT TO EXCAVATE IN COUNTY STREETS FROM THE L.A. COUNTY SOIL DIST. DISTRICT OFFICE NO. 1 AND PAY A FEE TO THE COUNTY ENGINEER, ROOM 300, COUNTY ENGINEER BUILDING, CONSTRUCTION INSPECTION AND RECORDS DIVISION, 125 SOUTH SPRING STREET, LOS ANGELES, CALIFORNIA. THE CONTRACTOR SHALL BE RESPONSIBLE FOR THE COST OF THE INSPECTION OF THE EXISTENCE OR NON-EXISTENCE OF ANY UNDERGROUND UTILITY PIPE, OR STRUCTURE, WITHIN THE LIMITS OF THE PROJECT. THIS NOTE APPLIES TO ALL SHEETS.
 IF WORK IS TO BE DONE IN A STATE HIGHWAY, A PERMIT MUST BE OBTAINED FROM THE STATE OF CALIFORNIA, DIVISION OF HIGHWAYS, 160 SOUTH SPRING STREET, LOS ANGELES, CALIFORNIA.

COUNTY OF LOS ANGELES, CALIFORNIA
 JOHN A. LAMBE, COUNTY ENGINEER
 APPROVED BY: Robert H. White Regional Engineer
 J. D. PARKHURST, CHIEF ENGINEER
 APPROVED BY: [Signature] OFFICE ENGINEER

CHECKED BY: [Signature] 4-3-68
 REG. C.E. NO. 12822

J.N. 0369.01



NO CHARGE FOR CONNECTIONS

39839