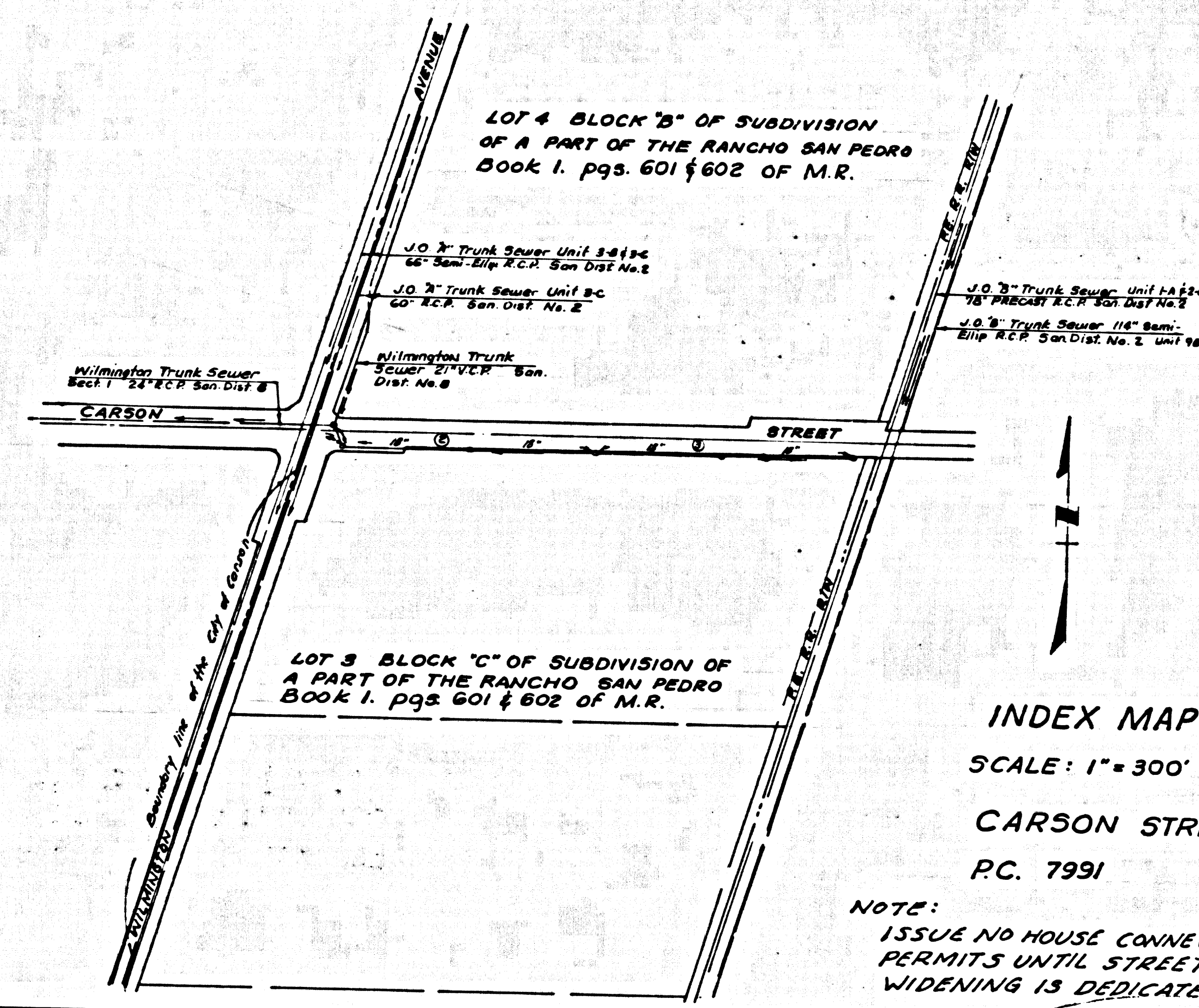


B.M. 7124 ELEV. 22.191
RDBM TAG 3.CS. 1FT E. S.C.R. @ S.E.
CORN. WILMINGTON AVE. & CARSON ST.
48 FT. E. & 75 FT. E. & INT.
GARDENA QUAD. 1965

- County Sanitation Districts shall be notified prior to the following so that required inspection can be made (Phone No. 63097)
- (1) Commencement of construction of manhole on Block "B" sewer system.
 - (2) Breaking into existing manhole on District trunk sewer.
 - (3) Core-drilling District trunk sewer.
 - (4) Construction of house connections to District trunk sewer.
 - (5) Acceptance of the project.

NO CONNECTIONS FOR THE DISPOSAL OF INDUSTRIAL WASTEWATER OR OTHER SEWERS SHOWN ON THESE DRAWINGS WITHOUT WRITTEN PERMISSION FROM THE CHIEF ENGINEER AND GENERAL MANAGER OF THE COUNTY SANITATION DISTRICTS.



INDEX MAP
SCALE: 1" = 300'
CARSON STREET
P.C. 7991

NOTE:
ISSUE NO HOUSE CONNECTION PERMITS UNTIL STREET WIDENING IS DEDICATED.

DOUBLE SCALE
LOMITA BLDG. DIST. NO. 12

- NOTES:
1. PROVIDE STAKES ON THE PROPERTY LINE OR PROPERTY LINES PRODUCED AT RIGHT ANGLES TO THE SEWER LINE AT THE CENTER LINE OF EACH MANHOLE.
 2. NO REPRESENTATIVE OF THE COUNTY ENGINEER WILL SURVEY OR LAY OUT ANY PORTION OF THE WORK.
 3. THE PRIVATE ENGINEER SHALL FURNISH THE COUNTY ENGINEER WITH GRASS SHEETS AND STATIONING FOR ALL HOUSE LATERALS AND "T" BRANCHES AND SHALL PROVIDE STAKES FOR THEM AT THEIR PROPER LOCATIONS WITH STATIONING PLAINLY MARKED. ALL HOUSE LATERALS SHALL BE CONSTRUCTED IN A STRAIGHT ALIGNMENT AT RIGHT ANGLES FROM THE MAIN LINE SEWER EXCEPT AS SHOWN ON THE PLANS. HOUSE LATERALS FROM CHIMNEYS SHALL NOT HAVE AN ANGLE OF LESS THAN 45° WITH THE MAIN LINE SEWER. ANY CHANGE IN ALIGNMENT SHALL BE REQUESTED IN WRITING BY THE PRIVATE ENGINEER.
 4. THE PRIVATE ENGINEER SHALL FURNISH THE HOUSE LATERAL DEPTH AT THE PROPERTY LINE BELOW THE TOP OF CURB ELEVATION FOR EACH HOUSE LATERAL ON THE GRADE SHEET.
 5. NO REVISIONS SHALL BE MADE IN THESE PLANS WITHOUT THE APPROVAL OF THE COUNTY ENGINEER.
 6. THE CONTRACTOR SHALL NOTIFY THE CONSTRUCTION DIVISION BY TELEPHONE, MADISON 9-87, EXT. 8551, AT LEAST TWENTY-FOUR HOURS BEFORE STARTING ANY WORK UNDER THIS CONTRACT.
 7. ALL STRUCTURES SHALL BE EITHER BORN MANHOLES PER S-3 OR RECAST MANHOLES PER S-2 OR S-4, EXCEPT AS NOTED.
 8. USE STANDARD MANHOLE FRAMES AND COVERS, S-1, EXCEPT AS NOTED.
 9. MANHOLE TOPS IN UNIMPROVED RIGHTS-OF-WAY TO BE SIX INCHES ABOVE FINISHED GRADE.
 10. USE EXTRA STRENGTH PIPE. ALL PIPE IS STANDARD DEPTH EXCEPT AS NOTED.
 11. WETTED CLAY PIPE JOINTS SHALL BE TYPE "D", "E", "F", "G", "H", "I", "J", "K", "L", "M", "N", "O", "P", "Q", "R", "S", "T", "U", "V", "W", "X", "Y", "Z", "AA", "AB", "AC", "AD", "AE", "AF", "AG", "AH", "AI", "AJ", "AK", "AL", "AM", "AN", "AO", "AP", "AQ", "AR", "AS", "AT", "AU", "AV", "AW", "AX", "AY", "AZ", "BA", "BB", "BC", "BD", "BE", "BF", "BG", "BH", "BI", "BJ", "BK", "BL", "BM", "BN", "BO", "BP", "BQ", "BR", "BS", "BT", "BU", "BV", "BW", "BX", "BY", "BZ", "CA", "CB", "CC", "CD", "CE", "CF", "CG", "CH", "CI", "CJ", "CK", "CL", "CM", "CN", "CO", "CP", "CQ", "CR", "CS", "CT", "CU", "CV", "CW", "CX", "CY", "CZ", "DA", "DB", "DC", "DD", "DE", "DF", "DG", "DH", "DI", "DJ", "DK", "DL", "DM", "DN", "DO", "DP", "DQ", "DR", "DS", "DT", "DU", "DV", "DW", "DX", "DY", "DZ", "EA", "EB", "EC", "ED", "EE", "EF", "EG", "EH", "EI", "EJ", "EK", "EL", "EM", "EN", "EO", "EP", "EQ", "ER", "ES", "ET", "EU", "EV", "EW", "EX", "EY", "EZ", "FA", "FB", "FC", "FD", "FE", "FF", "FG", "FH", "FI", "FJ", "FK", "FL", "FM", "FN", "FO", "FP", "FQ", "FR", "FS", "FT", "FU", "FV", "FW", "FX", "FY", "FZ", "GA", "GB", "GC", "GD", "GE", "GF", "GG", "GH", "GI", "GJ", "GK", "GL", "GM", "GN", "GO", "GP", "GQ", "GR", "GS", "GT", "GU", "GV", "GW", "GX", "GY", "GZ", "HA", "HB", "HC", "HD", "HE", "HF", "HG", "HH", "HI", "HJ", "HK", "HL", "HM", "HN", "HO", "HP", "HQ", "HR", "HS", "HT", "HU", "HV", "HW", "HX", "HY", "HZ", "IA", "IB", "IC", "ID", "IE", "IF", "IG", "IH", "II", "IJ", "IK", "IL", "IM", "IN", "IO", "IP", "IQ", "IR", "IS", "IT", "IU", "IV", "IW", "IX", "IY", "IZ", "JA", "JB", "JC", "JD", "JE", "JF", "JG", "JH", "JI", "JJ", "JK", "JL", "JM", "JN", "JO", "JP", "JQ", "JR", "JS", "JT", "JU", "JV", "JW", "JX", "JY", "JZ", "KA", "KB", "KC", "KD", "KE", "KF", "KG", "KH", "KI", "KJ", "KL", "KM", "KN", "KO", "KP", "KQ", "KR", "KS", "KT", "KU", "KV", "KW", "KX", "KY", "KZ", "LA", "LB", "LC", "LD", "LE", "LF", "LG", "LH", "LI", "LJ", "LK", "LL", "LM", "LN", "LO", "LP", "LQ", "LR", "LS", "LT", "LU", "LV", "LW", "LX", "LY", "LZ", "MA", "MB", "MC", "MD", "ME", "MF", "MG", "MH", "MI", "MJ", "MK", "ML", "MM", "MN", "MO", "MP", "MQ", "MR", "MS", "MT", "MU", "MV", "MW", "MX", "MY", "MZ", "NA", "NB", "NC", "ND", "NE", "NF", "NG", "NH", "NI", "NJ", "NK", "NL", "NM", "NN", "NO", "NP", "NQ", "NR", "NS", "NT", "NU", "NV", "NW", "NX", "NY", "NZ", "OA", "OB", "OC", "OD", "OE", "OF", "OG", "OH", "OI", "OJ", "OK", "OL", "OM", "ON", "OO", "OP", "OQ", "OR", "OS", "OT", "OU", "OV", "OW", "OX", "OY", "OZ", "PA", "PB", "PC", "PD", "PE", "PF", "PG", "PH", "PI", "PJ", "PK", "PL", "PM", "PN", "PO", "PP", "PQ", "PR", "PS", "PT", "PU", "PV", "PW", "PX", "PY", "PZ", "QA", "QB", "QC", "QD", "QE", "QF", "QG", "QH", "QI", "QJ", "QK", "QL", "QM", "QN", "QO", "QP", "QQ", "QR", "QS", "QT", "QU", "QV", "QW", "QX", "QY", "QZ", "RA", "RB", "RC", "RD", "RE", "RF", "RG", "RH", "RI", "RJ", "RK", "RL", "RM", "RN", "RO", "RP", "RQ", "RR", "RS", "RT", "RU", "RV", "RW", "RX", "RY", "RZ", "SA", "SB", "SC", "SD", "SE", "SF", "SG", "SH", "SI", "SJ", "SK", "SL", "SM", "SN", "SO", "SP", "SQ", "SR", "SS", "ST", "SU", "SV", "SW", "SX", "SY", "SZ", "TA", "TB", "TC", "TD", "TE", "TF", "TG", "TH", "TI", "TJ", "TK", "TL", "TM", "TN", "TO", "TP", "TQ", "TR", "TS", "TT", "TU", "TV", "TW", "TX", "TY", "TZ", "UA", "UB", "UC", "UD", "UE", "UF", "UG", "UH", "UI", "UJ", "UK", "UL", "UM", "UN", "UO", "UP", "UQ", "UR", "US", "UT", "UU", "UV", "UW", "UX", "UY", "UZ", "VA", "VB", "VC", "VD", "VE", "VF", "VG", "VH", "VI", "VJ", "VK", "VL", "VM", "VN", "VO", "VP", "VQ", "VR", "VS", "VT", "VU", "VV", "VW", "VX", "VY", "VZ", "WA", "WB", "WC", "WD", "WE", "WF", "WG", "WH", "WI", "WJ", "WK", "WL", "WM", "WN", "WO", "WP", "WQ", "WR", "WS", "WT", "WU", "WV", "WW", "WX", "WY", "WZ", "XA", "XB", "XC", "XD", "XE", "XF", "XG", "XH", "XI", "XJ", "XK", "XL", "XM", "XN", "XO", "XP", "XQ", "XR", "XS", "XT", "XU", "XV", "XW", "XZ", "YA", "YB", "YC", "YD", "YE", "YF", "YG", "YH", "YI", "YJ", "YK", "YL", "YM", "YN", "YO", "YP", "YQ", "YR", "YS", "YT", "YU", "YV", "YW", "YX", "YZ", "ZA", "ZB", "ZC", "ZD", "ZE", "ZF", "ZG", "ZH", "ZI", "ZJ", "ZK", "ZL", "ZM", "ZN", "ZO", "ZP", "ZQ", "ZR", "ZS", "ZT", "ZU", "ZV", "ZW", "ZX", "ZY", "ZZ".

COLLECT CHARGES AS INDICATED
L. Curtis 4/16/68

PROFILE, ALIGNMENT AND GRADE OF
SANITARY SEWERS P.C. 7991
TO BE CONSTRUCTED IN PAGE 1

CARSON STREET
PRIVATE CONTRACT NO. 7991

W.S. 30
2 SHEETS, 3 PAGES
SCALE: HORIZ. 1" = 40' VERT. 1" = 4'
FEBRUARY, 1968

PREPARED IN THE OFFICES OF
H.M. SCOTT & ASSOCIATES, INC.
ROSEMEAD, CALIFORNIA
By: Robert E. Kumpf
REG. C.E. NO. 15429

40346

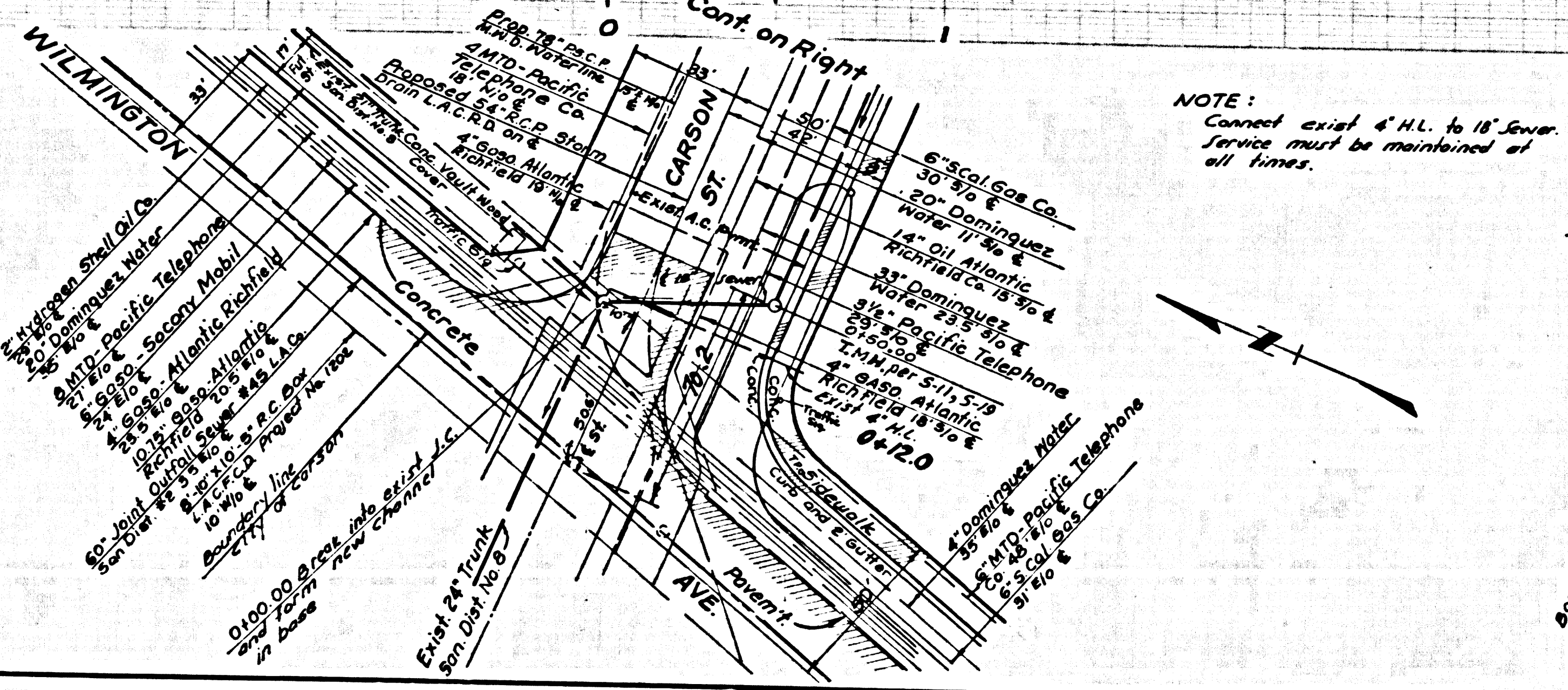
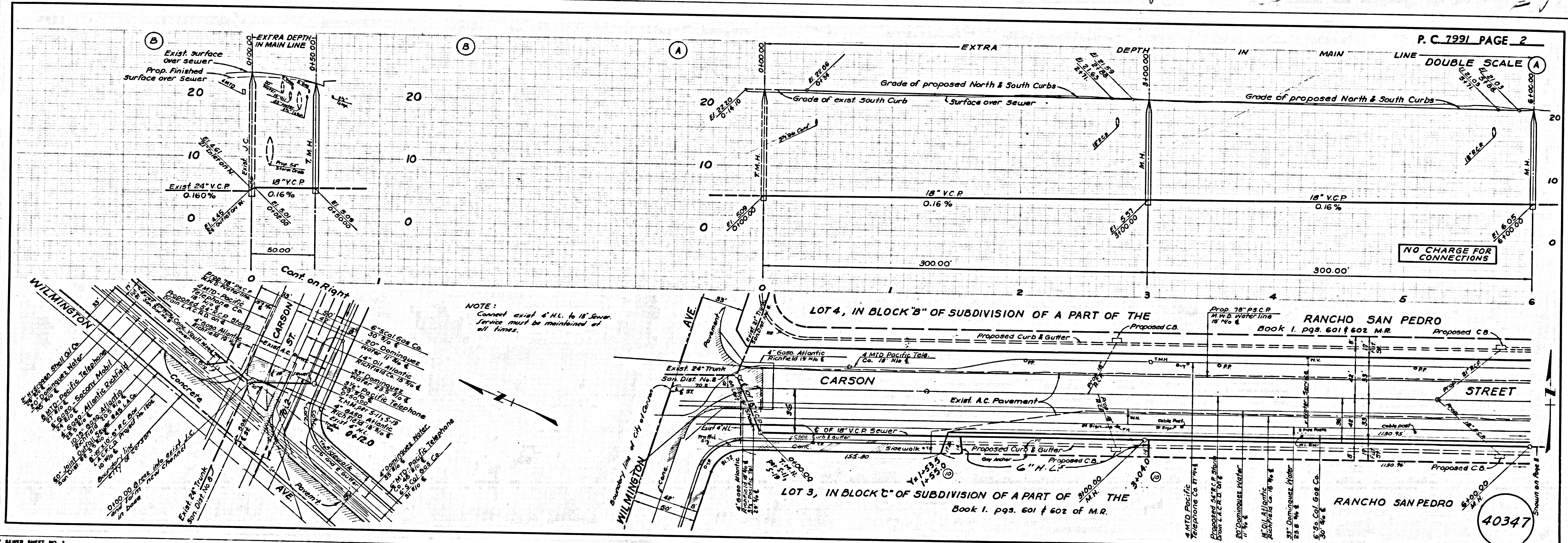
FOR LEGEND SEE PLAN NO. S-1

NOTES:
GRADE TO WHICH THIS IMPROVEMENT IS TO BE CONSTRUCTED AND SHOWN ON PLANS AND PROFILE, GRADE POINTS FOR TOP OF CURB, CENTER LINE OF STREETS, OR CENTER LINE OF ALLEYS ARE SHOWN BY CIRCLES ON PROFILE. AT ALL POINTS BETWEEN DESIGNATED ELEVATIONS ARE IN FEET ABOVE U.S.C. & G.S. SEA LEVEL DATUM OF 1929.
THIS DRAWING AND THE DATA HEREON ARE HEREBY MADE A PART OF THE SPECIFICATIONS.
SPECIAL PROVISIONS DATED FEB. 25, 1962 AND LATEST AMENDMENTS ONLY IN THE PRESENCE OF THE COUNTY ENGINEER'S ROAD DEPT. DISTRICT OFFICE NO. 3, 120 WEST SECOND STREET, LOS ANGELES, CALIFORNIA, SHALL APPLY.
PROVIDE THE CONTRACTOR MUST OBTAIN A PERMIT TO EXCAVATE IN COUNTY STREETS FROM THE L.A. COUNTY PERMITTING DIVISION, DISTRICT OFFICE NO. 3, 120 WEST SECOND STREET, LOS ANGELES, CALIFORNIA.
CONSTRUCTION INSPECTION AND RECORD PLANS.
APPROVAL OF THIS PLAN BY THE COUNTY OF LOS ANGELES DOES NOT CONSTITUTE A REPRESENTATION AS TO THE ACCURACY OF THE PROJECT. THIS NOTE APPLIES TO ALL PLANS.
IF WORK IS TO BE DONE IN A STATE HIGHWAY, A PERMIT MUST BE OBTAINED FROM THE STATE OF CALIFORNIA, DIVISION OF HIGHWAYS, 120 SOUTH SPRING STREET, LOS ANGELES, CALIFORNIA.

COUNTY OF LOS ANGELES, CALIFORNIA
JOHN A. LAMBIE, COUNTY ENGINEER J. D. PARKHURST, CHIEF ENGINEER
APPROVED BY: Robert E. Kumpf REGIONAL ENGINEER APPROVED BY: J. D. Parkhurst OFFICE ENGINEER

CHECKED BY: Edward J. Valdez 4/16/68
REG. C.E. NO. 13524

J.N. 0268.88



NOTE:
Connect exist 4" H.L. to 18" Sewer. Service must be maintained at all times.

40347

DOUBLE SCALE

40348

NO CHARGE FOR CONNECTIONS

