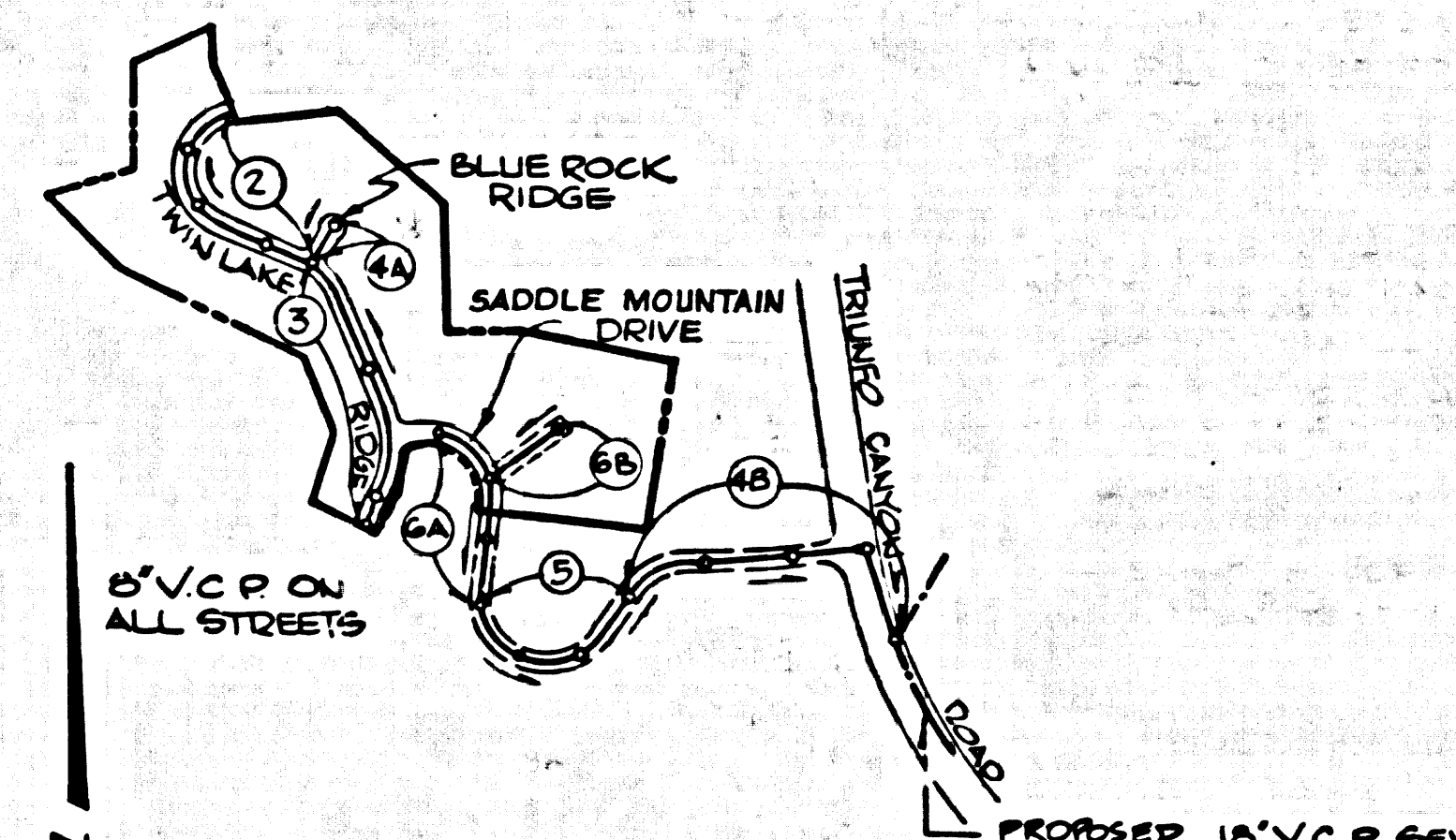


B.M. 54 5644 ELEV. 949.117  
 C/6 ON W. SIDE OF (DROP INLET)  
 OF C/6 VENTURA BLVD AT STA. 501+85.7  
 3 MI. W. CORNELL ROAD  
 MALIBU QUAD. 1960

B.M. 54 5644 ELEV. 949.117  
 BR. CAP O'DN. ON C/6 VENTURA BLVD AT L.A.  
 W. CORNELL RD MKD L.A. CO. SUR. RE. 329  
 VENTURA LOS ANGELES  
 MALIBU QUAD. 1960

THE FOLLOWING LATEST REVISED STANDARD PLANS OR FILE  
 IN THE OFFICE OF THE COUNTY ENGINEER SHALL APPLY IN  
 THE CONSTRUCTION OF THIS PROJECT.

LEGEND  
 MINIMUM PUBLIC SAFETY REQUIREMENTS ..... 3-1  
 6" V.C.P. MANHOLE ..... 3-2  
 STANDARD MANHOLE STEP ..... 3-7  
 BEDDING FOR SEWER PIPE ..... 3-21  
 CRADLING AND ENGAGEMENT  
 PIPE OR TEE SURFACE ..... 3-22  
 ALLOWABLE TRENCH WIDTHS ..... 3-33  
 LOCKING MANHOLE FRAME AND COVER ..... 3-35  
 NON-REINFORCED PRECAST CONCRETE MANHOLE ..... 3-36



WHEN C RADIUS OF SEWER  
 IS LESS THAN 150 FEET  
 USE 3.5 FEET LENGTHS OF V.C.P.

PRIVATE ENGINEER'S  
 NOTICE TO CONTRACTOR

THE EXISTENCE AND LOCATION OF ANY UNDERGROUND UTILITY PIPES  
 OR STRUCTURES SHOWN ON THESE PLANS ARE OBTAINED BY A SEARCH  
 OF THE AVAILABLE RECORDS. TO THE BEST OF OUR KNOWLEDGE  
 THERE ARE NO EXISTING UTILITIES EXCEPT AS SHOWN ON THESE PLANS.  
 THE CONTRACTOR IS REQUIRED TO TAKE PRECAUTIONARY MEASURES  
 TO PROTECT THE UTILITY LINES SHOWN AND ANY OTHER LINES  
 NOT OF RECORD OR NOT SHOWN ON THESE PLANS.

INDEX MAP  
 TRACT No 28535  
 SCALE 1"=600'  
 P.C. 7994

CHANGE NO 3  
 REVISOR LOCATION OF SEWER LINE BETWEEN  
 14752'S STA 1026.70 ON PAGE 64  
 RECORDED SEWER LINE & EASEMENT  
 ALONG N1/2 & P/4 L.A. 11722  
 R.C.E. # 11722

CHANGE NO 2 2 FEB. 1971  
 REVISED TRACT BOUNDARY AND RE-  
 VISOR PORTION OF SADDLE MOUNTAIN  
 DRIVE TO SAN SEWER ESM  
 R.C.E. # 11722

DOUBLE SCALE  
 CALABASAS BLDG. DIST. NO. 9/1

PROFILE ALIGNMENT AND GRADE OF  
 SANITARY SEWERS PAGE 1

TRACT No 28535  
 PRIVATE CONTRACT NO. 7994

W.S. 103  
 3 SHEETS, 6 PAGES  
 SCALE: VERT. 1"=4'  
 HORIZ. 1"=40'  
 DEC. 1967  
 PREPARED IN THE OFFICES OF  
 ENGINEERING SERVICE CORPORATION  
 J. R. Sturtevant  
 REG. C. E. NO. 18085

- NOTE:
1. PROVIDE STAKES ON THE PROPERTY LINE OR PROPERTY LINES PRODUCED AT RIGHT ANGLES TO THE SEWER LINE AT THE CENTER LINE OF EACH MANHOLE.
  2. NO REPRESENTATIVE OF THE COUNTY ENGINEER WILL SURVEY OR LAY OUT ANY PORTION OF THE WORK.
  3. THE PRIVATE ENGINEER SHALL FURNISH THE COUNTY ENGINEER WITH GRADE SHEETS AND STATIONING FOR ALL HOUSE LATERALS AND TRENCHES. MANHOLES SHALL PROVIDE STAKES FOR THEM AT THEIR PROPER LOCATIONS WITH STATIONING PLAINLY MARKED. ALL HOUSE LATERALS SHALL BE CONSTRUCTED IN A STRAIGHT ALIGNMENT AT RIGHT ANGLES FROM THE MAIN LINE SEWER EXCEPT AS SHOWN ON THE PLANS. HOUSE LATERALS FROM CHIMNEYS SHALL NOT HAVE AN ANGLE OF LESS THAN 45° WITH THE MAIN LINE SEWER. ANY CHANGE IN ALIGNMENT SHALL BE INDICATED IN WRITING BY THE PRIVATE ENGINEER.
  4. THE PRIVATE ENGINEER SHALL FURNISH THE HOUSE LATERAL DEPTH AT THE PROPERTY LINE BELOW THE TOP OF CURB ELEVATION FOR EACH HOUSE LATERAL ON THE GRADE SHEET.
  5. NO BYPASS SHALL BE MADE IN THESE PLANS WITHOUT THE APPROVAL OF THE COUNTY ENGINEER.
  6. THE CONTRACTOR SHALL NOTIFY THE CONSTRUCTION DIVISION BY TELEPHONE, MADISON 7-6747, EXT. 8158, AT LEAST TWENTY-FOUR HOURS BEFORE STARTING ANY WORK UNDER THIS CONTRACT.
  7. MANHOLES SHALL BE 6" V.C.P. STRUCTURES PER S-5 OR PRECAST CONCRETE MANHOLES PER S-36 EXCEPT AS NOTED.
  8. USE STANDARD MANHOLE FRAMES AND COVERS, S-59 EXCEPT AS NOTED.
  9. MANHOLES TOPS IN UNAPPROVED SHORTS-OF-WAY TO BE SIX INCHES ABOVE FINISHED GRADE.
  10. USE EXTRA STRENGTH PIPE. ALL PIPE IS STANDARD DEPTH EXCEPT AS NOTED.
  11. VULNERABLE CLAY PIPE JOINTS SHALL BE TYPE "B", "B" OR "K" PER STD. SPEC. SEC. 608-B.
  12. IF A POWER POLE IS WITHIN THREE FEET OF THE SEWER, THE SEWER SHALL BE ENCASED, PER S-25, TWO FEET ON EACH SIDE FROM THE POINT OF INTERFERENCE.
  13. IF DURING THE COURSE OF CONSTRUCTION IT IS DETERMINED THAT THERE IS LESS THAN FOUR FEET OF COVER OVER THE TOP OF A MAIN LINE OR HOUSE LATERAL V.C.P. SEWER WHICH IS NOT INDICATED ON THE PLANS, THE PIPE SHALL BE ENCASED PER S UNLESS OTHERWISE APPROVED BY THE COUNTY ENGINEER.
  14. HOUSE LATERALS TO BE CONSTRUCTED WITH BRIVETS AT PROPERTY LINE. 6" FEET BELOW CURB GRADE EXCEPT AS NOTED.
  15. REINFORCE ALL TRENCHES WITHIN PAVED AREAS TO MEET L.A. COUNTY ROAD DEPT. OR CALIFORNIA STATE HIGHWAY REQUIREMENTS IN ACCORDANCE WITH PLANS.
  16. Y BRANCHES MAY BE USED IN PLACE OF Y BRANCHES EXCEPT AS NOTED.
- ALL STATES AND LOCAL TRENCH SAFETY ORDERS SHALL BE STRICTLY ENFORCED.  
 SEWERS TO BE AIR PREHEATED PER SECTION 306-2.3.1.C OF THE STANDARD SPECIFICATIONS.

NOTE:  
 GRADES TO WHICH THIS IMPROVEMENT IS TO BE CONSTRUCTED ARE SHOWN ON PLANS AND PROFILES. GRADE POINTS FOR TOP OF CURB, CENTER LINE OF STREET, OR CENTER LINE OF ALLEY ARE SHOWN BY CIRCLES ON PROFILES. AT ALL POINTS BETWEEN DESIGNATED POINTS THE GRADE SHALL BE ESTABLISHED SO AS TO CONFORM TO A STRAIGHT LINE DRAWN BETWEEN SAID DESIGNATED POINTS. ELEVATIONS ARE BY FEET ABOVE U.S.C. & G.S. SEA LEVEL DATUM OF 1929.  
 THIS DRAWING AND THE DATA HEREON ARE HEREBY MADE A PART OF THE SPECIFICATIONS.  
 THE CONTRACTOR SHALL BE RESPONSIBLE FOR OBTAINING ALL NECESSARY PERMITS FROM THE L.A. COUNTY ENGINEER'S OFFICE AND THE DISTRICT OFFICE NO. 14 AND AT A FEE TO THE COUNTY ENGINEER, ROOM 308, COUNTY ENGINEERING BUILDING, 100 WEST SECOND STREET, LOS ANGELES, CALIFORNIA. THE CONTRACTOR MUST OBTAIN A PERMIT TO LOCATE IN COUNTY STREET FROM THE L.A. COUNTY ENGINEER'S OFFICE NO. 14 AND AT A FEE TO THE COUNTY ENGINEER, ROOM 308, COUNTY ENGINEERING BUILDING, 100 WEST SECOND STREET, LOS ANGELES, CALIFORNIA. THE CONTRACTOR SHALL BE RESPONSIBLE FOR OBTAINING ALL NECESSARY PERMITS FROM THE L.A. COUNTY ENGINEER'S OFFICE AND THE DISTRICT OFFICE NO. 14 AND AT A FEE TO THE COUNTY ENGINEER, ROOM 308, COUNTY ENGINEERING BUILDING, 100 WEST SECOND STREET, LOS ANGELES, CALIFORNIA. THE CONTRACTOR SHALL BE RESPONSIBLE FOR OBTAINING ALL NECESSARY PERMITS FROM THE L.A. COUNTY ENGINEER'S OFFICE AND THE DISTRICT OFFICE NO. 14 AND AT A FEE TO THE COUNTY ENGINEER, ROOM 308, COUNTY ENGINEERING BUILDING, 100 WEST SECOND STREET, LOS ANGELES, CALIFORNIA.

COUNTY OF LOS ANGELES, CALIFORNIA  
 JOHN A. LAMBIE, COUNTY ENGINEER  
 APPROVED BY J. R. Sturtevant, REGIONAL ENGINEER  
 APPROVED BY J. W. Stober, CHIEF CLERK

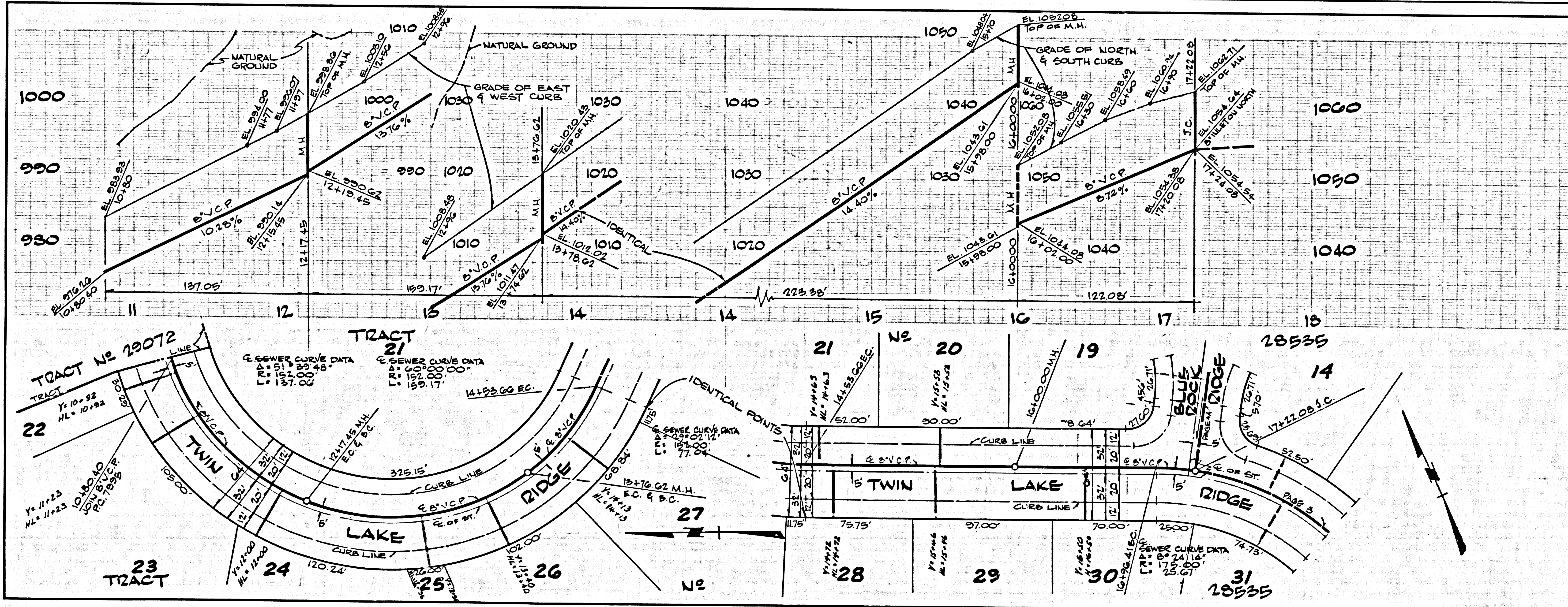
COLLECT CHARGES  
 AS INDICATED  
 Robert C. Niles, 2 Feb. 1968

CHANGE NO 1 21 July 69  
 Revised location of Sewer between  
 Sta. 279.18 & 3+81.92, page 6 to agree  
 with P.C. 7961  
 R.C.E. # 11066 J. R. Sturtevant

CHECKED BY J. R. Sturtevant  
 REG. C. E. NO. 2466

43296

J.N. 0250.02



P.C. 7994 PAGE 2  
 DOUBLE SCALE  
 NO CHARGE  
 FOR CONNECTIONS  
 FOR THE COUNTY  
 OF LOS ANGELES  
 SEE L.V.M.W.D.  
 FOR CHARGES

43297

