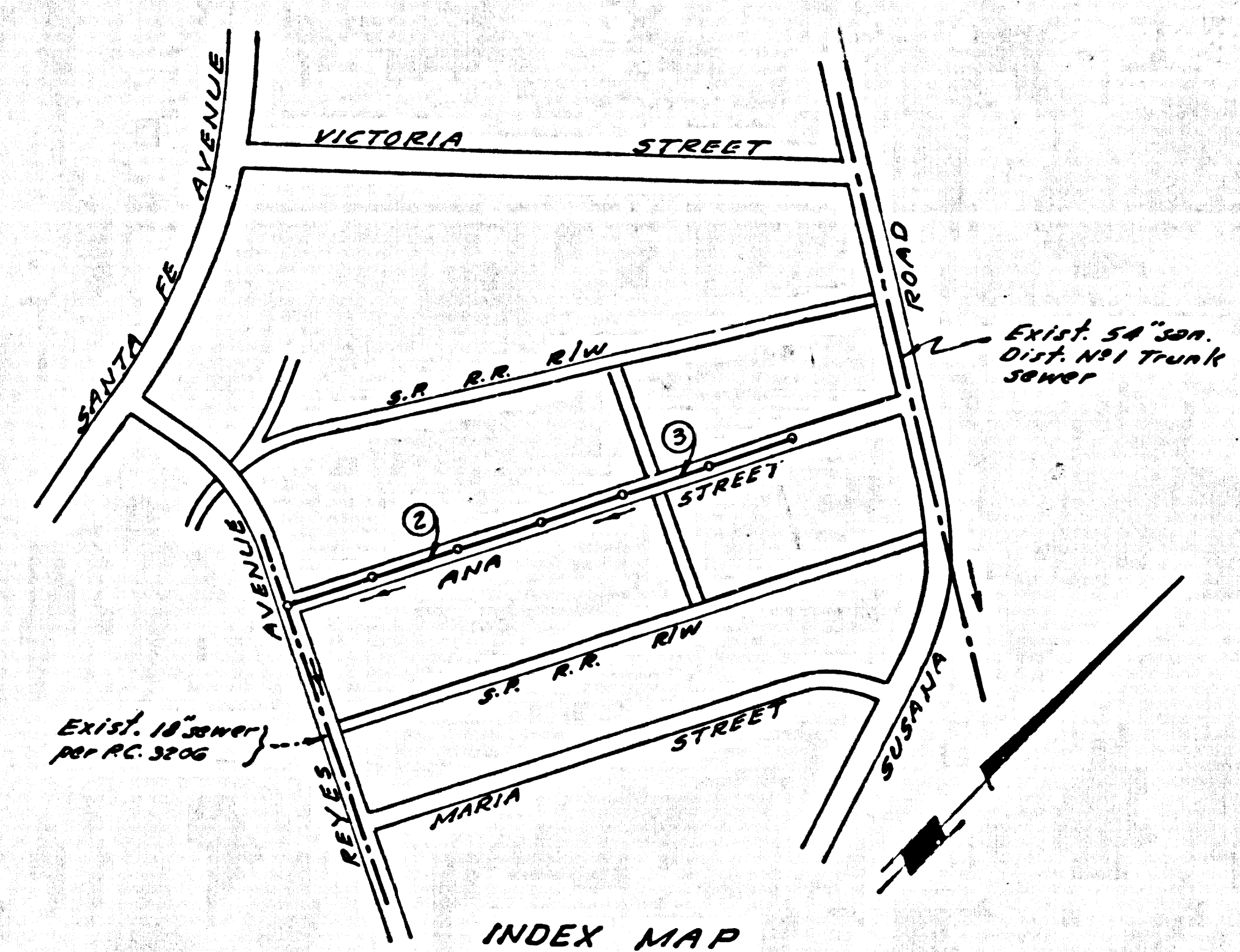


B.M. 37-2379 ELEV. 62.969
 C.C. Brass and 5 ft. South angle point
 Wingwall S.W. corner bridge 18774 on
 Alameda St. over Compton Canal 29 ft. S.
 N. 4' 100 ft. S. Arteria Blvd. N.W. (S.M. 44-31)
 Santa Fe Power QUAD. 1965



INDEX MAP
 P.C. 8004
 Scale 1"=600'

NO CONNECTIONS FOR THE DISPOSAL OF INDUSTRIAL WASTES SHALL BE MADE TO SEWERS SHOWN ON THESE DRAWINGS WITHOUT WRITTEN PERMISSION FROM THE CHIEF ENGINEER AND GENERAL MANAGER OF THE COUNTY SANITATION DISTRICTS.

County Sanitation Districts shall be notified prior to the following so that required inspection can be made (Phone _____)

- (1) Commencement of construction of manhole on District trunk sewer.
- (2) Breaking into existing manhole on District trunk sewer.
- (3) Core drilling District trunk sewer.
- (4) Construction of house connections to District trunk sewer.
- (5) Acceptance of the project.

LENNOX BLDG. DIST. NO. 7

- NOTES:
1. PROPERTY STAKES ON THE PROPERTY LINE OR PROPERTY LINES PRODUCED AT RIGHT ANGLES TO THE SEWER LINE AT THE CENTER LINE OF EACH MANHOLE.
 2. NO REPRESENTATIVE OF THE COUNTY ENGINEER WILL SURVEY OR LAY OUT ANY PORTION OF THE WORK.
 3. THE PRIVATE ENGINEER SHALL FURNISH THE COUNTY ENGINEER WITH GRADE SHEETS AND STATIONING FOR ALL HOUSE LATERALS AND "T" BRANCHES AND SHALL PROVIDE STAKES FOR THEM AT THEIR PROPER LOCATIONS WITH STATIONING ALIGNED ALONG THE MAIN LINE SEWER EXCEPT AS SHOWN ON THE PLANS. HOUSE LATERALS FROM CRUISEY'S SHALL NOT HAVE AN ANGLE OF LESS THAN 45° WITH THE MAIN LINE SEWER. ANY CHANGE IN ALIGNMENT SHALL BE REQUESTED IN WRITING BY THE PRIVATE ENGINEER.
 4. THE PRIVATE ENGINEER SHALL FURNISH THE HOUSE LATERAL DEPTH AT THE PROPERTY LINE BELOW THE TOP OF CURB ELEVATION FOR EACH HOUSE LATERAL ON THE GRADE SHEET.
 5. NO REVISIONS SHALL BE MADE IN THESE PLANS WITHOUT THE APPROVAL OF THE COUNTY ENGINEER.
 6. THE CONTRACTOR SHALL NOTIFY THE CONSTRUCTION DIVISION BY TELEPHONE, HANSON 9-4747, EXT. 8128, AT LEAST TWENTY-FOUR HOURS BEFORE STARTING ANY WORK UNDER THIS CONTRACT.
 7. MANHOLES SHALL BE BUILT SEWER STRUCTURES PER S-2, SEE PRECINCT (MONTHLY) MANHOLES PER S-2 OR S-6 EXCEPT AS NOTED.
 8. USE STANDARD MANHOLE FRAMES AND COVERS, S-1, EXCEPT AS NOTED.
 9. MANHOLE TOPS IN UNIMPROVED RIGHTS-OF-WAY TO BE SIX INCHES ABOVE FINISHED GRADE.
 10. USE EXTRA STRENGTH PIPE, ALL PIPE IS STANDARD DEPTH EXCEPT AS NOTED.
 11. USE MECHANICAL COMPRESSION JOINTS FOR ALL V.C.P. JOINTS PER SPECS., SECS. 36, 40 & 41.
 12. IF A POWER POLE IS WITHIN THREE FEET OF THE SEWER, THE SEWER SHALL BE ENCASED, PER S-25, TWO FEET ON EACH SIDE FROM THE POINT OF INTERFERENCE.
 13. IF DURING THE COURSE OF CONSTRUCTION IT IS DETERMINED THAT THERE IS LESS THAN FOUR FEET OF COVER OVER THE TOP OF A MAIN LINE OR HOUSE LATERAL V.C.P. SEWER WHICH IS NOT INDICATED ON THE PLANS, THE PIPE SHALL BE ENCASED PER S-25, UNLESS OTHERWISE APPROVED BY THE COUNTY ENGINEER.
 14. HOUSE LATERALS TO BE CONSTRUCTED WITH INVERTS AT PROPERTY LINE 6 FEET BELOW CURB GRADE EXCEPT AS NOTED.
 15. REINFORCE ALL TRENCHES WITHIN PAVED AREAS TO MEET L.A. COUNTY ROAD DEPT. OR CALIFORNIA STATE HIGHWAY REQUIREMENTS IN ACCORDANCE WITH PERMITS.
 16. FOR ALLOWABLE LEAKAGE TEST USE FORMULA NO. 2, SPEC. 2, SEC. 44.
 17. ALL STATE AND LOCAL TRENCH SAFETY ORDERS WILL BE STRICTLY ENFORCED.
 18. All joints between cast iron pipe and vitrified clay pipe shall be made with a rubber sleeve joint (with lead if necessary) per standard specifications, Section 36, or approved equal.

ISSUE NO HOUSE CONNECTION PERMITS UNTIL STREET IS DEDICATED.

COLLECT CHARGES AS INDICATED
 J. Pearson 2/8/68

NOTICE TO CONTRACTOR

The existence and location of any underground utility pipes or structures shown on these plans to the best of my knowledge there are no existing utility records shown on these plans. The contractor is required to take due precautionary measures to protect the utility lines shown and any other lines not of record or not shown on these plans.
 Paul H. Brown
 C.E.E. 1967

PROFILE, ALIGNMENT AND GRADE OF
 SANITARY SEWERS P.C. 8004
 TO BE CONSTRUCTED IN
 ANA STREET PAGE 1

PRIVATE CONTRACT NO. 8004

W.S. 32
 2 SHEETS, 3 PAGES
 SCALE: VERT. 1"=4' HOR. 1"=40'
 NOV. 1967
 PREPARED IN THE OFFICE OF
 E.L. PEARSON AND ASSOCIATES
 by Paul H. Brown 1-30-68
 REG. C.E. NO. 12557

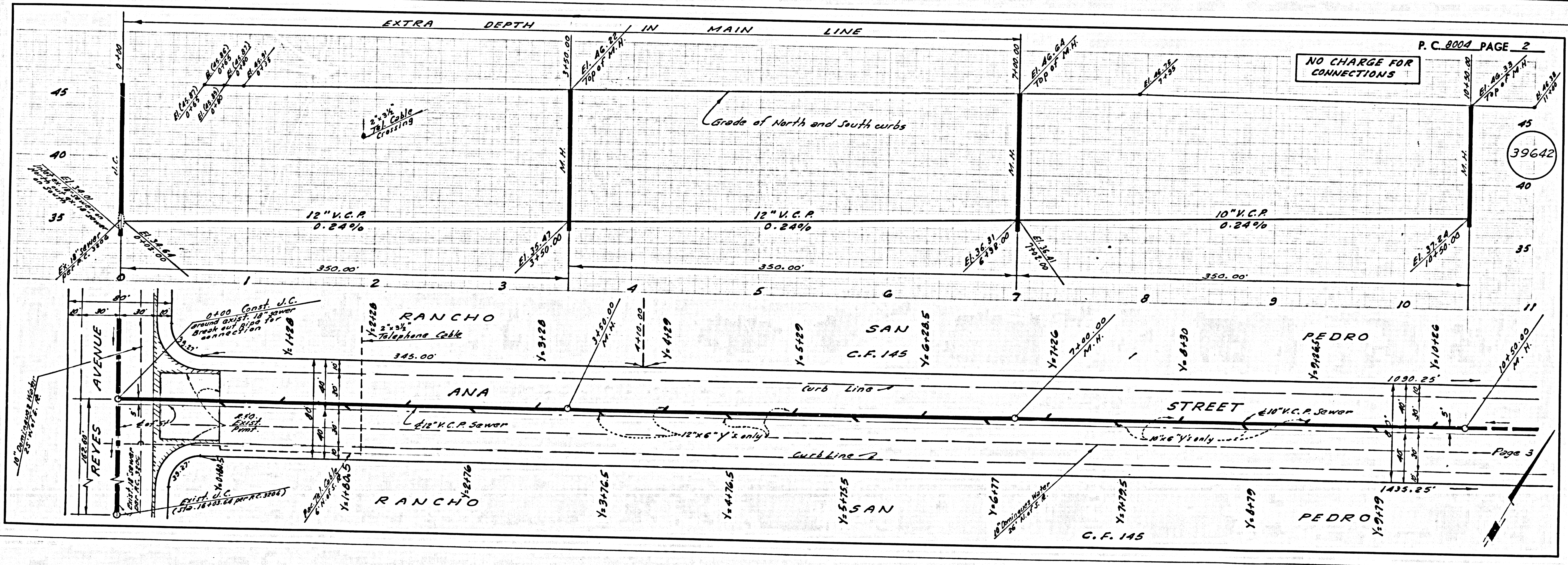
FOR LEGEND SEE PLAN NO. S-1

NOTE:
 GRADES TO WHICH THIS IMPROVEMENT IS TO BE CONSTRUCTED ARE SHOWN ON PLANS AND PROFILE. GRADE POINTS FOR TOP OF CURB, CENTER LINE OF STREETS, OR CENTER LINE OF ALLEYS ARE SHOWN BY CIRCLES ON PROFILES. AT ALL POINTS BETWEEN DESIGNATED STATIONS ARE IN FEET ABOVE U.S.C. & G.S. SEA LEVEL. GRADES OF TYPES OF PIPE AND MANHOLES ARE SHOWN BY CIRCLES ON PLANS. THIS DRAWING AND THE DATA HEREON ARE HEREBY MADE A PART OF THE SPECIFICATIONS. WORK SHALL BE CONSTRUCTED ACCORDING TO STANDARD SPECIFICATIONS DATED 12/22/62, ON FILE IN THE OFFICE OF THE COUNTY ENGINEER AND SHALL BE PROSECUTED ONLY IN THE PRESENCE OF THE COUNTY ENGINEER. THE COUNTY ENGINEER SHALL BE NOTIFIED BY THE CONTRACTOR AT LEAST 48 HOURS BEFORE ANY EXCAVATION IN COUNTY STREETS FROM THE U.S. COUNTY ENGINEER'S OFFICE NO. 12557 AND PAY A FEE TO THE COUNTY ENGINEER, ROOM 300, COUNTY ENGINEERING BUILDING, 12557 W. 10TH STREET, LOS ANGELES, CALIFORNIA. APPROVAL OF THE PLAN BY THE COUNTY OF LOS ANGELES DOES NOT CONSTITUTE A REPRESENTATION AS TO THE ACCURACY OF THE LOCATION OF OR THE EXISTENCE OR NON-EXISTENCE OF ANY UNDERGROUND UTILITY PIPE, OR STRUCTURE WITHIN THE LIMITS OF THE PROJECT. THIS NOTE APPLIES TO ALL PAGES.
 IF WORK IS TO BE DONE IN A STATE HIGHWAY, A PERMIT MUST BE OBTAINED FROM THE STATE OF CALIFORNIA, DIVISION OF HIGHWAYS, 120 SOUTH SPRING STREET, LOS ANGELES, CALIFORNIA.

COUNTY OF LOS ANGELES, CALIFORNIA
 JOHN A. LAMBIE, COUNTY ENGINEER J. D. PARKHURST, CHIEF ENGINEER
 APPROVED BY: [Signature] Regional Engineer APPROVED BY: [Signature] OFFICE ENGINEER

CHECKED BY: [Signature] REG. C.E. NO. 10553

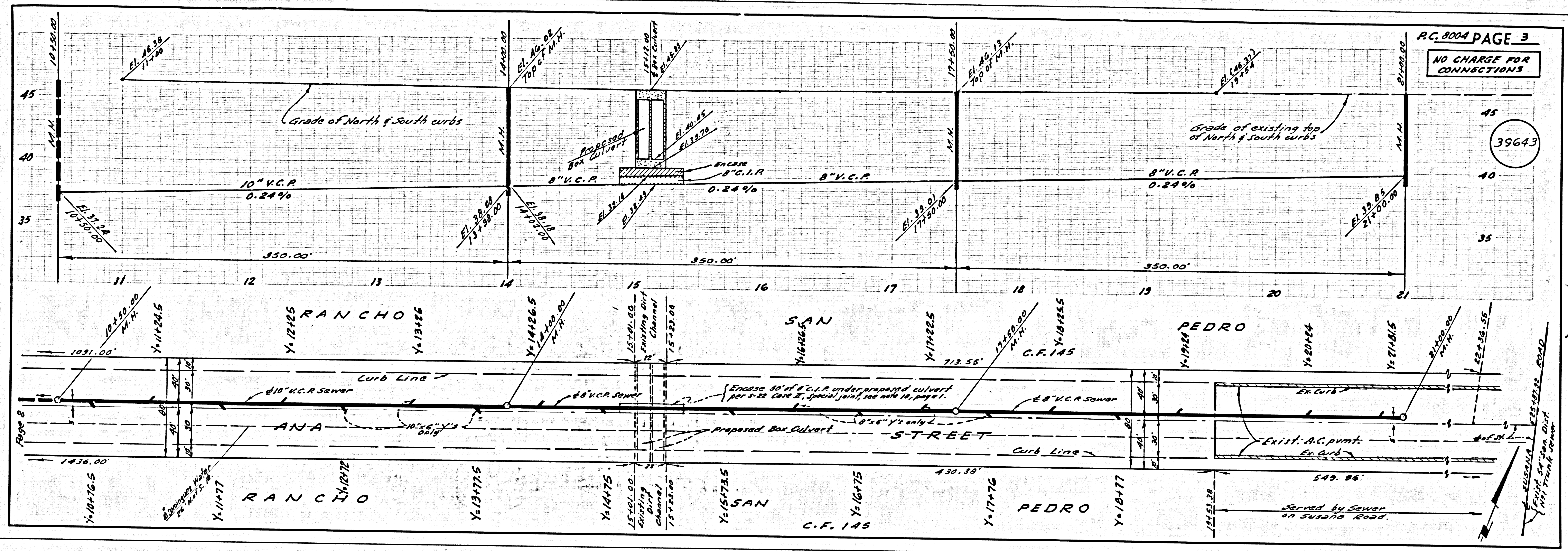
J.N. 0368.34



P.C. 8004 PAGE 2
 NO CHARGE FOR CONNECTIONS

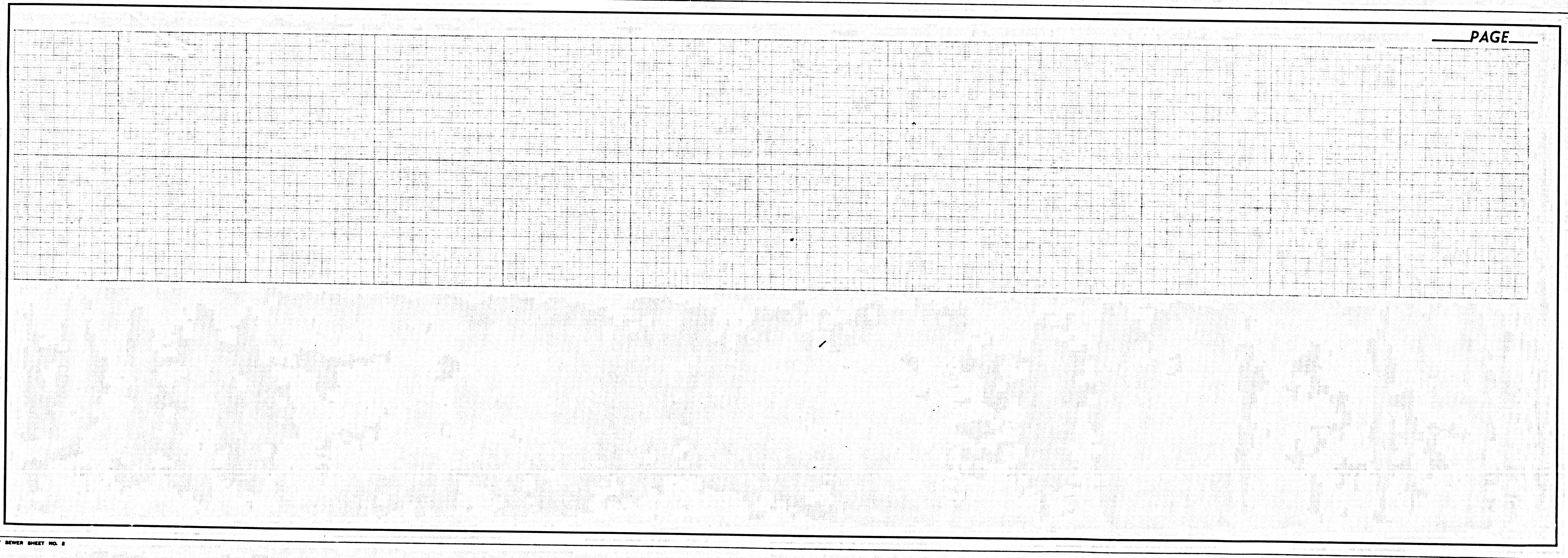
39642

Page 3



P.C. 8004 PAGE 3
 NO CHARGE FOR CONNECTIONS

39643



PAGE