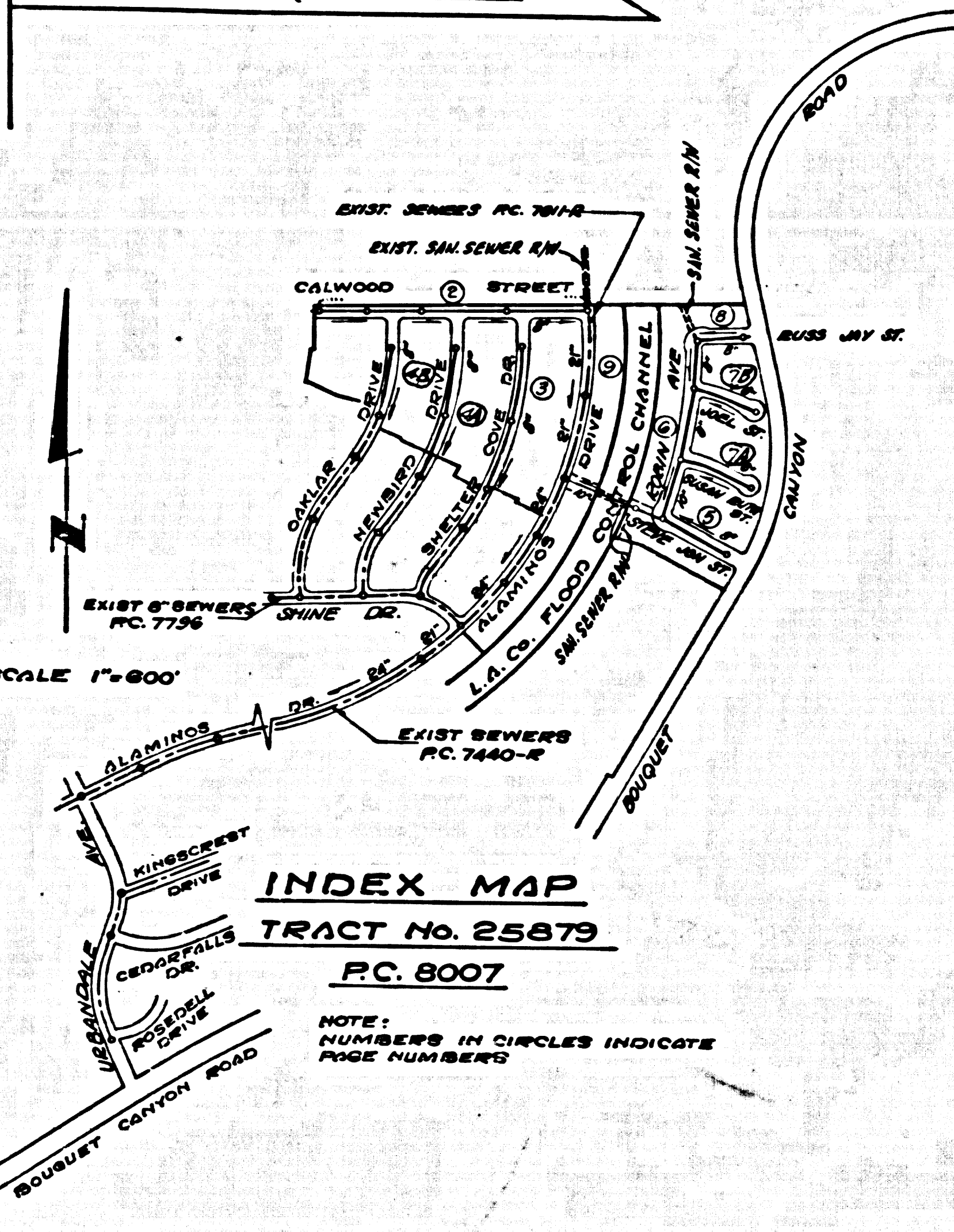


B.M. 1741 ELEV. 1349.390  
 (S.L.B.M. V. 6) FT. FLOOD CONT. MON.  
 FLUSH BY FT. SLY. S. BOUQUET CANYON  
 ROAD AND ITS NLY. OF PLUMAY  
 CANYON RD. MARKED 144.00800, 1923.  
 NEWHALL QUAD. 1955



THE ACCURACY OF THE LOCATION OF OR THE EXISTENCE OR NON-EXISTENCE OF ANY UTILITY PIPE OR STRUCTURE WITHIN THE LIMITS OF THIS PROJECT DOES NOT CONSTITUTE RESPONSIBILITY BY THE ENGINEER.

NOTE: LOTS 4-11, INCL. ARE SERVED BY EXISTING HOUSE LATERALS CONSTRUCTED UNDER P.C. 7796.

SEWER PIPE BEDDING SHALL CONFORM TO S-1

LEGEND	APPLY TO THIS PROJECT
BIRNUM PUBLIC SAFETY REQUIREMENTS	S-1
RICK MANHOLE	S-2
ROB REINFORCED PRECAST CONCRETE MANHOLE	S-3
REINFORCED PRECAST CONCRETE MANHOLE	S-4
MANHOLE FRAME AND COVER	S-5
MANHOLE STEP	S-6
REINFORCED CONCRETE PIPE	S-7
CRADLES AND ENCASEMENT	S-8
WYE OR TEE SUPPORT	S-9
ADJUSTABLE TRENCH WYTHE	S-10
RECONSTRUCTION OF BRICK MANHOLE TOPS	S-11
TEMPORARY SAND TRAP	S-12
CORRECT PIPE AND BASE	S-13

any connection to the sewage system of County Sanitation District, provided directly or indirectly by the sewers shown on these plans, shall be considered a temporary connection until all area sewerage is annexed to said district, at which time the connection shall become permanent. If for any reason the connection to the district for any area sewerage is not completed, the property owner in the district will be required to disconnect unless a contract is entered into with the district providing for the disposal of sewage from the area.

REVISIONS 8-8-68  
 PAGE 5 - LOWER SURFACE OVER SEWER BETWEEN 140' & 140'  
 PAGE 5 - LOWER CURB GRADES BETWEEN 49-07' & 55-24' ADJUST M.H. & CHIMNEY TOPS.

APPROVED: *[Signature]* DATE: 8-9-68 OFFICE OF COUNTY ENGINEER

REVISIONS 7-11-68  
 PAGE 5 - LOWER CURB AND SEWER GRADES FROM 3-50 TO 8-30 AND PORTION OF CURB GRADE.  
 PAGE 6 - LOWER CURB AND SEWER GRADES.  
 PAGE 7 - LOWER CURB AND SEWER GRADES.  
 (A) B) REALIGN SEWERS AND DELETE ONE M.H. EACH VIEW AND ON HIDDEN MAP-PRI  
 (A) B) LOWER CURB AND SEWER GRADES (NOTE: PAGES 7 AND 8 REDRAWN)  
 PAGE 8 - LOWER CURB GRADES.

APPROVED: *[Signature]* DATE: 7-25-68  
 R.E. 13906 OFFICE OF COUNTY ENGINEER

NO CONNECTIONS FOR THE DISPOSAL OF INDUSTRIAL WASTES SHALL BE MADE TO SEWERS SHOWN ON THESE DRAWINGS WITHOUT WRITTEN PERMISSION FROM THE CHIEF ENGINEER AND GENERAL MANAGER OF THE COUNTY SANITATION DISTRICTS.

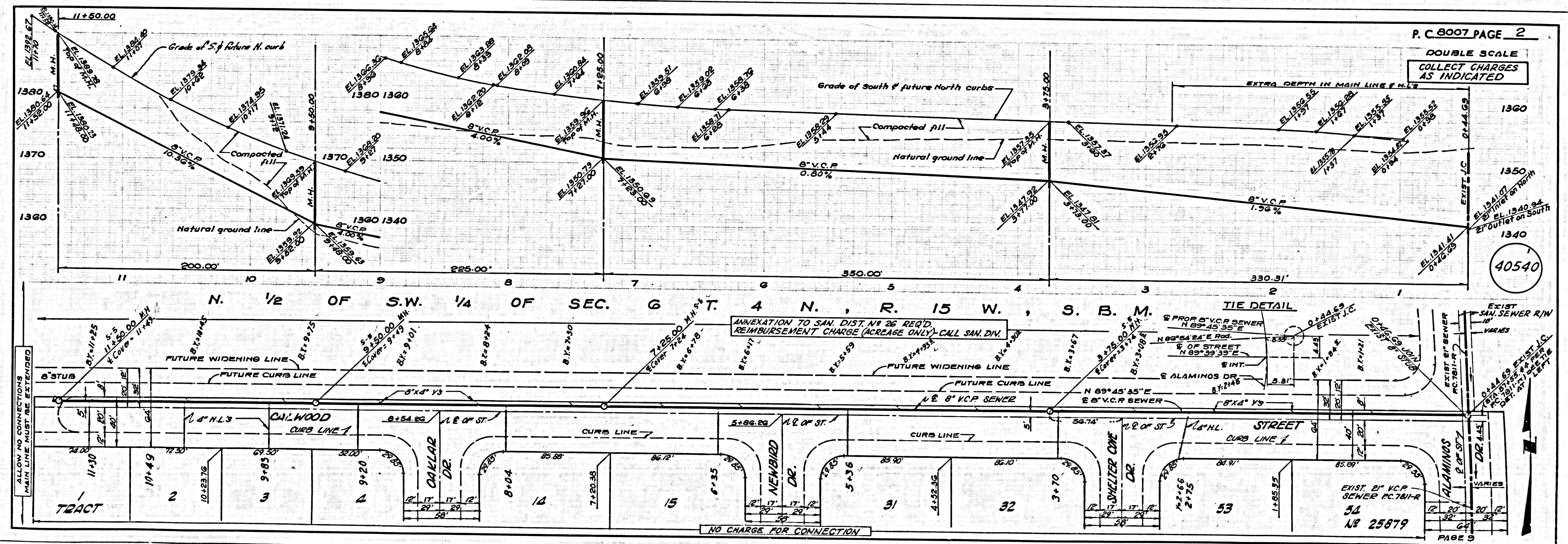
DOUBLE SCALE  
 NEWHALL BLDG. DIST. NO. 3.2

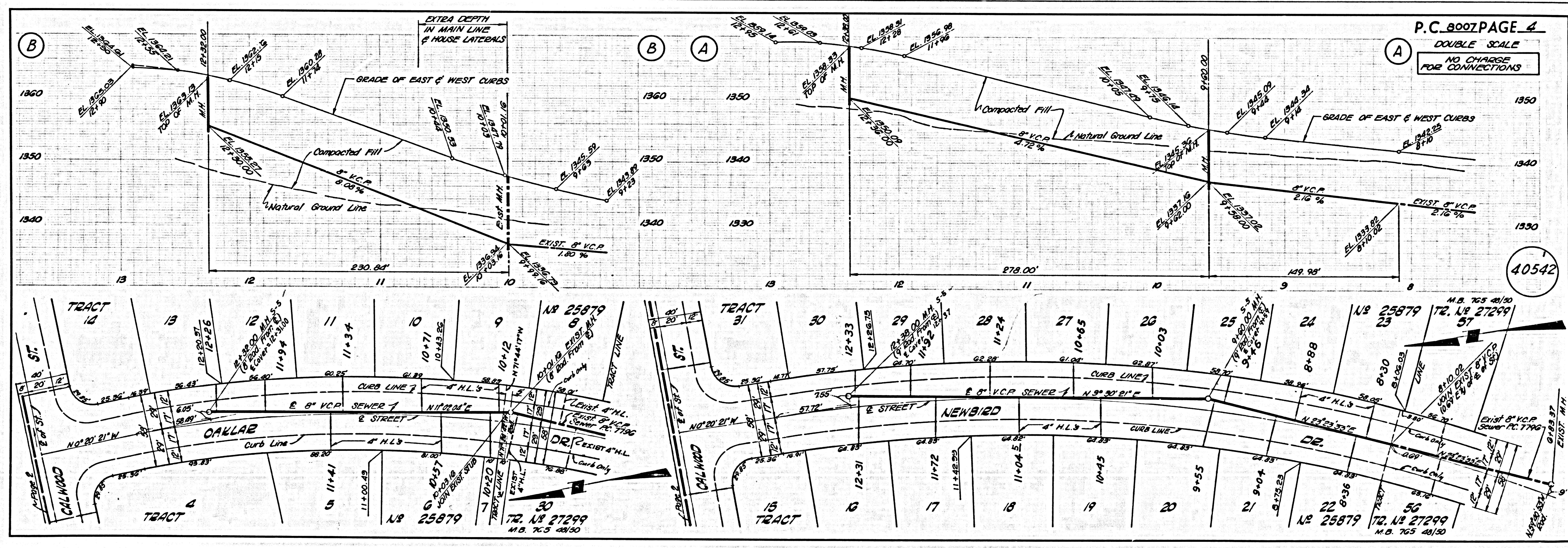
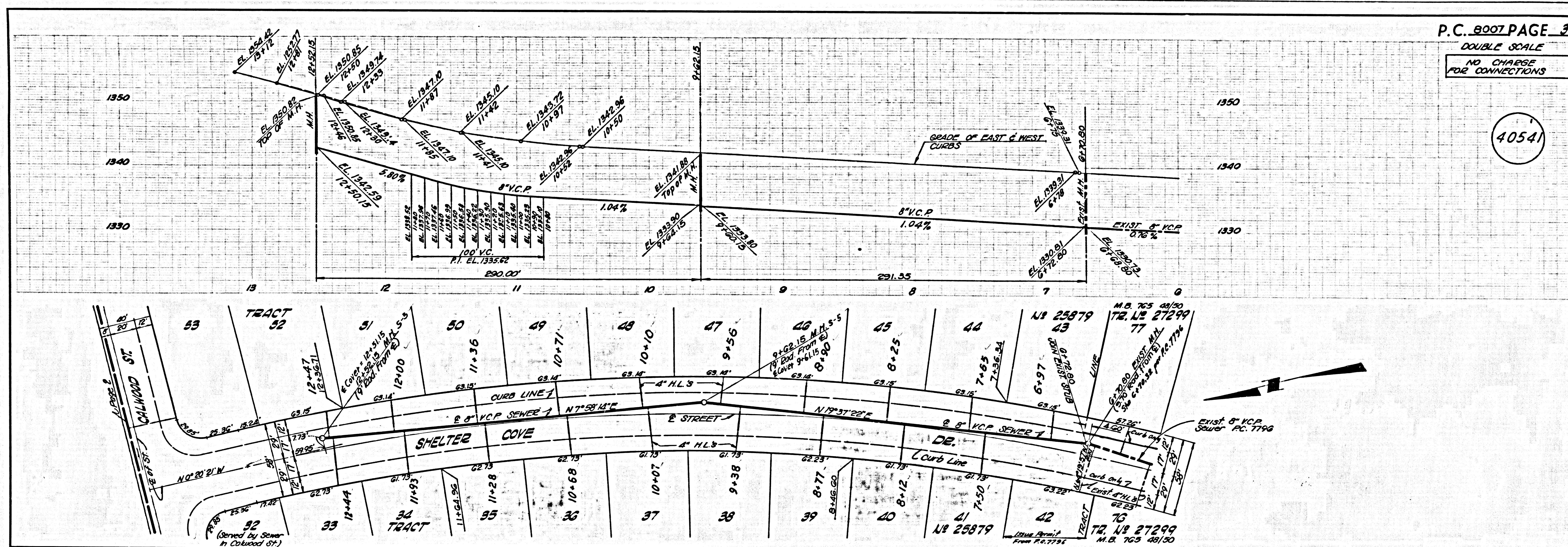
- PROFILES, ALIGNMENT AND GRADE OF P.C. 8007  
 SANITARY SEWERS PAGE 1  
 TO BE CONSTRUCTED IN
- TRACT No. 25879  
 PRIVATE CONTRACT NO. 8007  
 W.S. 62 (264-117 & 264-137)  
 5 SHEETS, 2 PAGES  
 SCALE: VERT. 1" = 4' HORIZ. 1" = 40'  
 JANUARY, 1968
- PREPARED BY THE OFFICE OF MONTIURE AND QUIROS, INC. 670 MONTEREY PARK ROAD MONTEREY PARK, CALIF. TEL. 283-7661, 289-5111
- BY: *[Signature]* REG. C. E. NO. 15810
- FOR LEGEND SEE PLAN NO. S-1
- NOTE: GRADES TO WHICH THE IMPROVEMENT IS TO BE CONSTRUCTED ARE SHOWN ON PLANS AND PROFILES. GRADE POINTS FOR TOP OF CURBS, CENTER LINE OF STREETS, OR CENTER LINE OF ALLEYS ARE SHOWN BY CIRCLES ON PLANS. AT ALL POINTS BETWEEN DESIGNATED ELEVATIONS ARE IN FEET ABOVE U.S.C. & G.S. MEAN SEA LEVEL DATUM OF 1929.
- THIS DRAWING AND THE DATA HEREON ARE HEREBY MADE A PART OF THE SPECIFICATIONS. WORK SHALL BE CONSTRUCTED ACCORDING TO STANDARD SPECIFICATIONS FOR PUBLIC WORKS CONSTRUCTION AND COUNTY ENGINEER SPECIAL PROVISIONS DATED FEBRUARY 19, 1944, AS REVISED.
- SOILS SHALL BE CLASSIFIED ACCORDING TO THE SOILS SURVEY OF THE COUNTY OF LOS ANGELES, CALIFORNIA, DISTRICT OFFICE NO. 1, AND PAY A FEE TO THE COUNTY ENGINEER, ROOM 300, COUNTY ENGINEER'S BUILDING, 1200 WEST BROADWAY STREET, LOS ANGELES, CALIFORNIA, FOR THE COST OF APPROVAL OF THIS PLAN BY THE COUNTY OF LOS ANGELES. WORK SHALL BE DONE ONLY IN THE PRESENCE OF THE COUNTY ENGINEER OR HIS REPRESENTATIVE. THE ACCURACY OF THE LOCATION OF OR THE EXISTENCE OR NON-EXISTENCE OF ANY UNDERGROUND UTILITY PIPE, OR STRUCTURE WITHIN THE LIMITS OF THIS PROJECT, THIS NOTE APPLIES TO ALL PAGES.
- IF WORK IS TO BE DONE IN A STATE HIGHWAY, A PERMIT MUST BE OBTAINED FROM THE STATE OF CALIFORNIA, DIVISION OF HIGHWAYS, 120 SOUTH SPRING STREET, LOS ANGELES, CALIFORNIA.
- COUNTY OF LOS ANGELES, CALIFORNIA  
 JOHN A. LAMBIE, COUNTY ENGINEER J. D. PARKHURST, CHIEF ENGINEER  
 CO. SAN. DIST. NO. 3.2  
 APPROVED BY: *[Signature]* REGIONAL ENGINEER APPROVED BY: *[Signature]* OFFICE ENGINEER
- CHECKED BY: *[Signature]* DATE: 5/2/68  
 REG. E. NO. 12306

County Sanitation Districts shall be notified prior to the following so that required inspection can be made (Thomas 42-7-4-12):

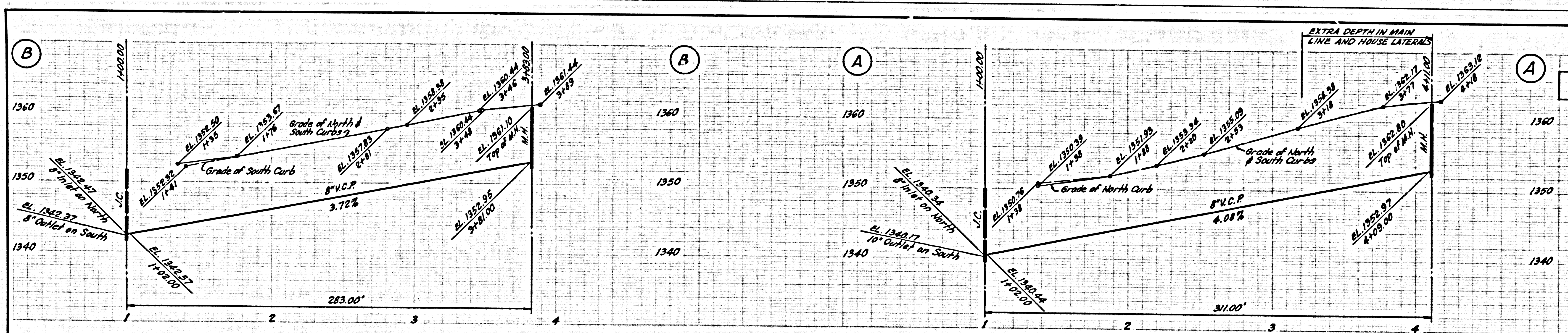
- (1) Commencement of construction of manhole on District territory.
- (2) Breaking into existing manhole on District territory.
- (3) Core drilling beneath trunk sewer.
- (4) Construction of lateral connections to District trunk sewer.
- (5) Access to the project.

P.C. 8007 PAGE 2



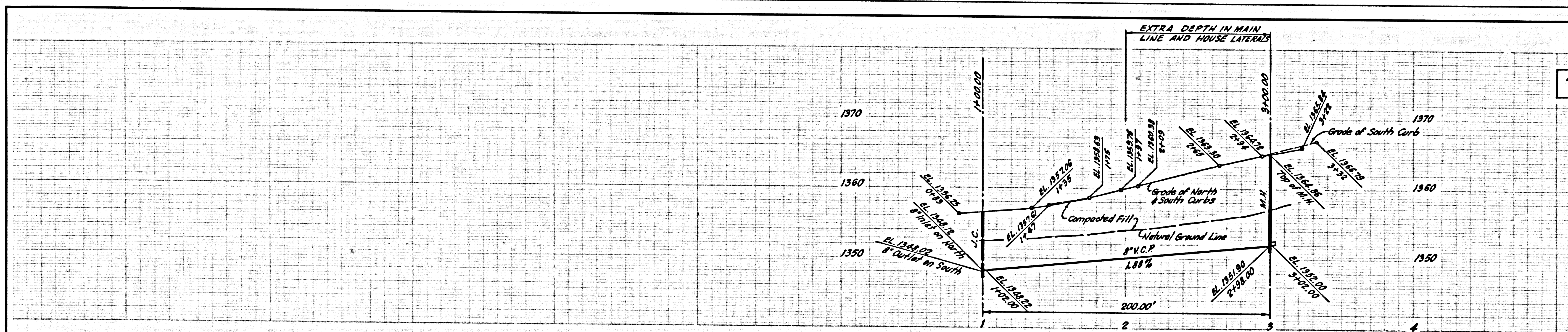
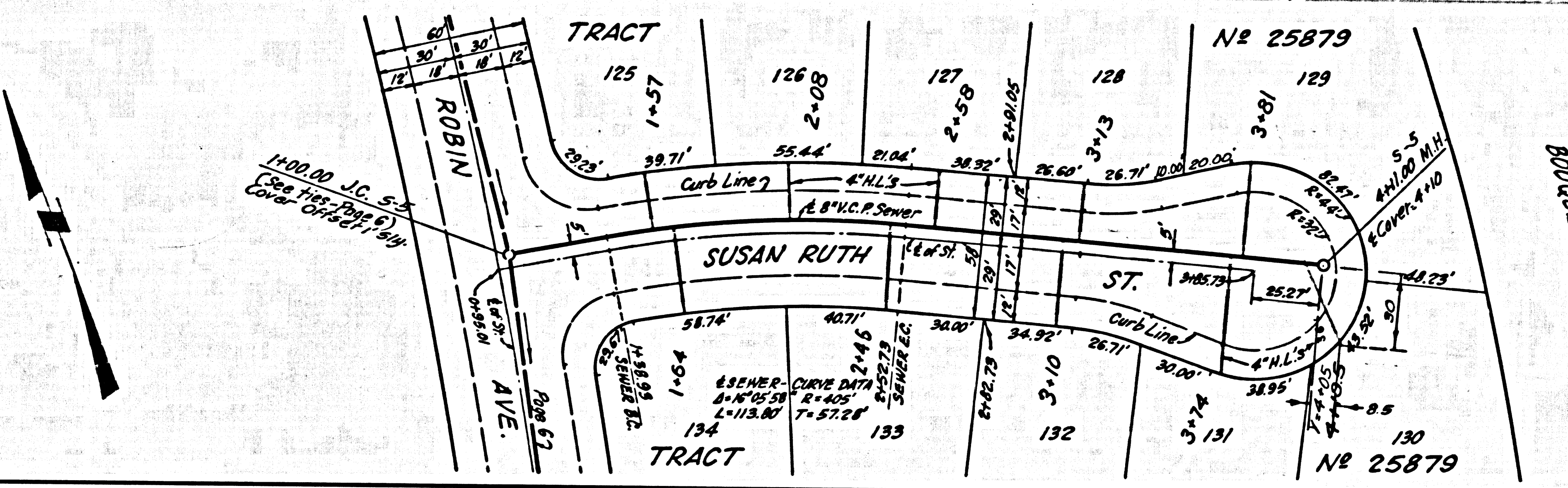
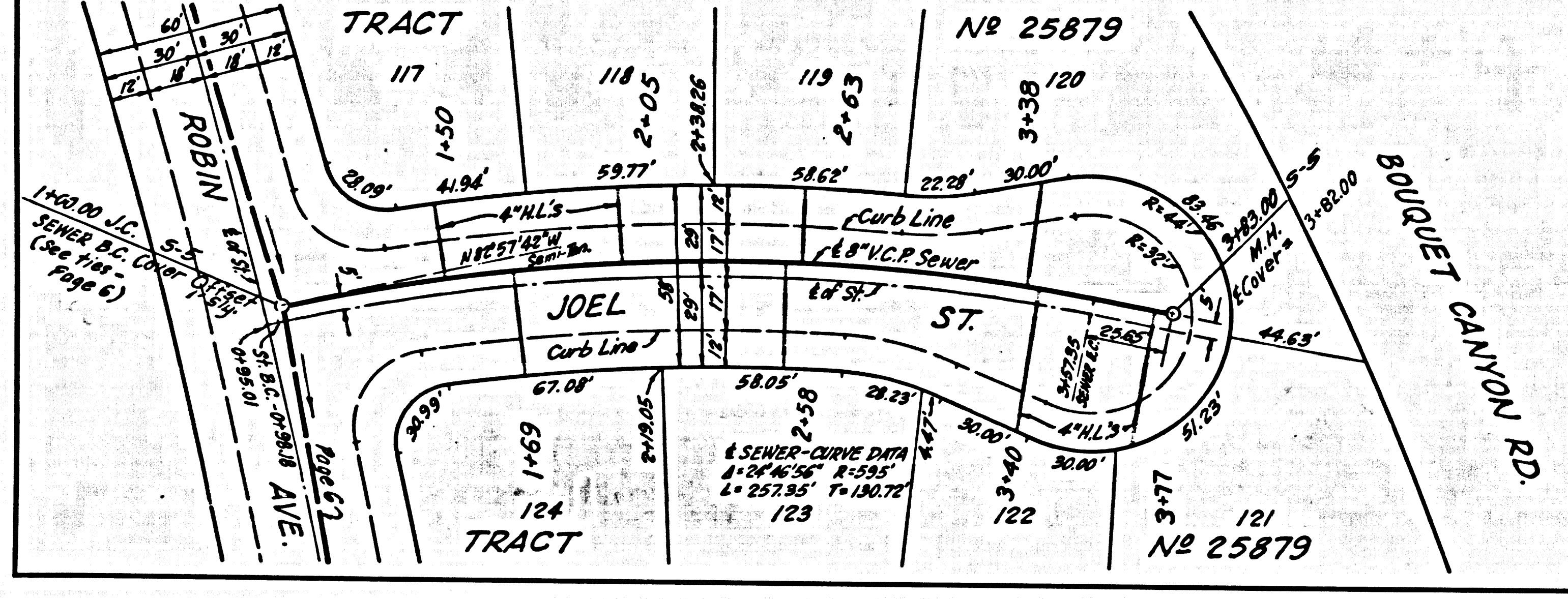






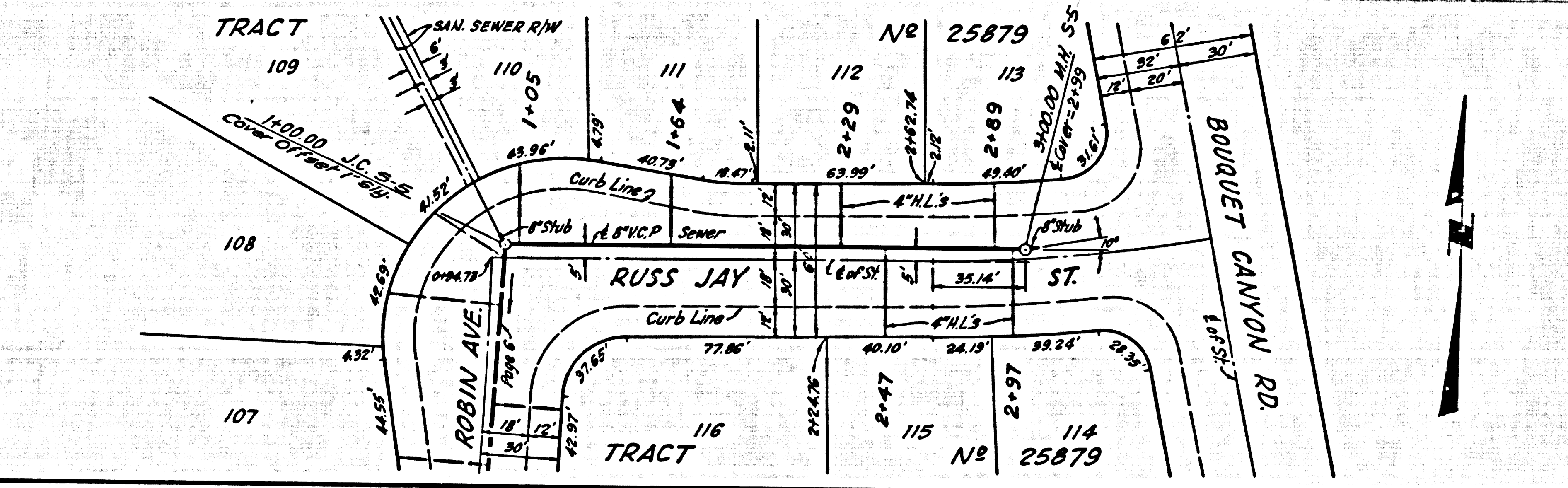
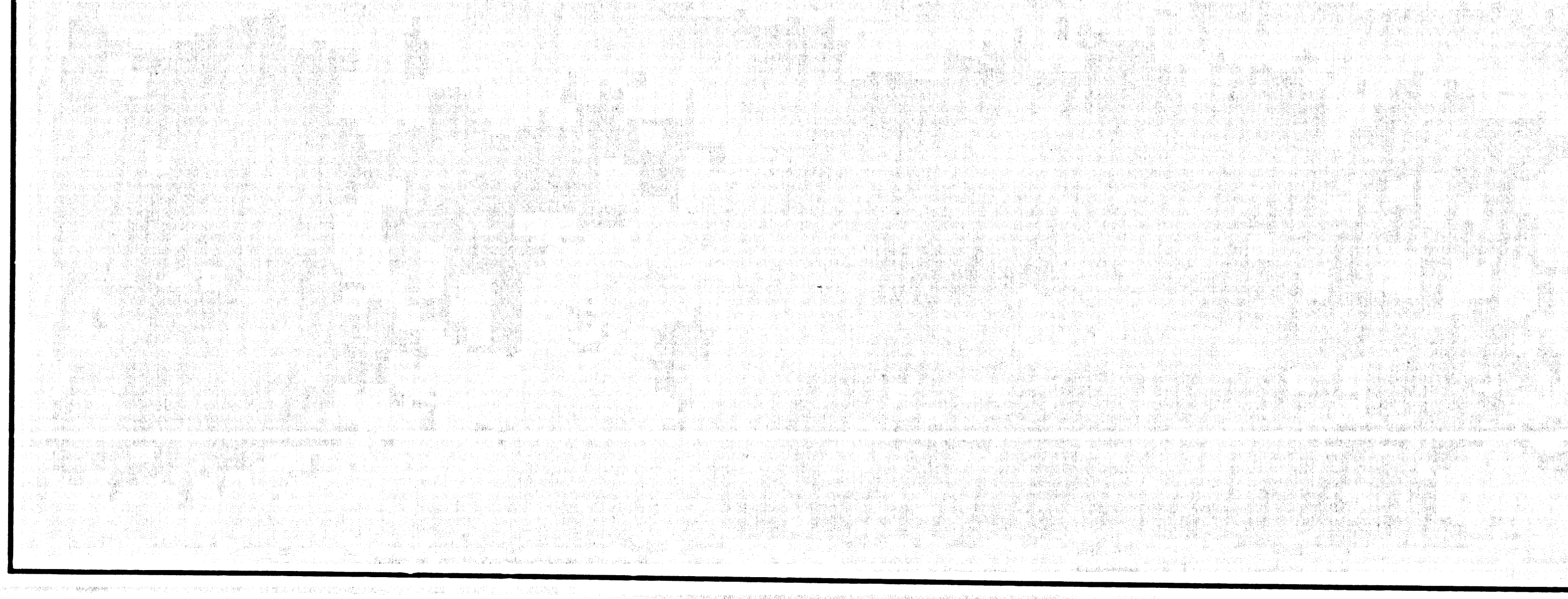
P.C. 8007 PAGE 7  
 DOUBLE SCALE  
 NO CHARGE FOR  
 CONNECTIONS

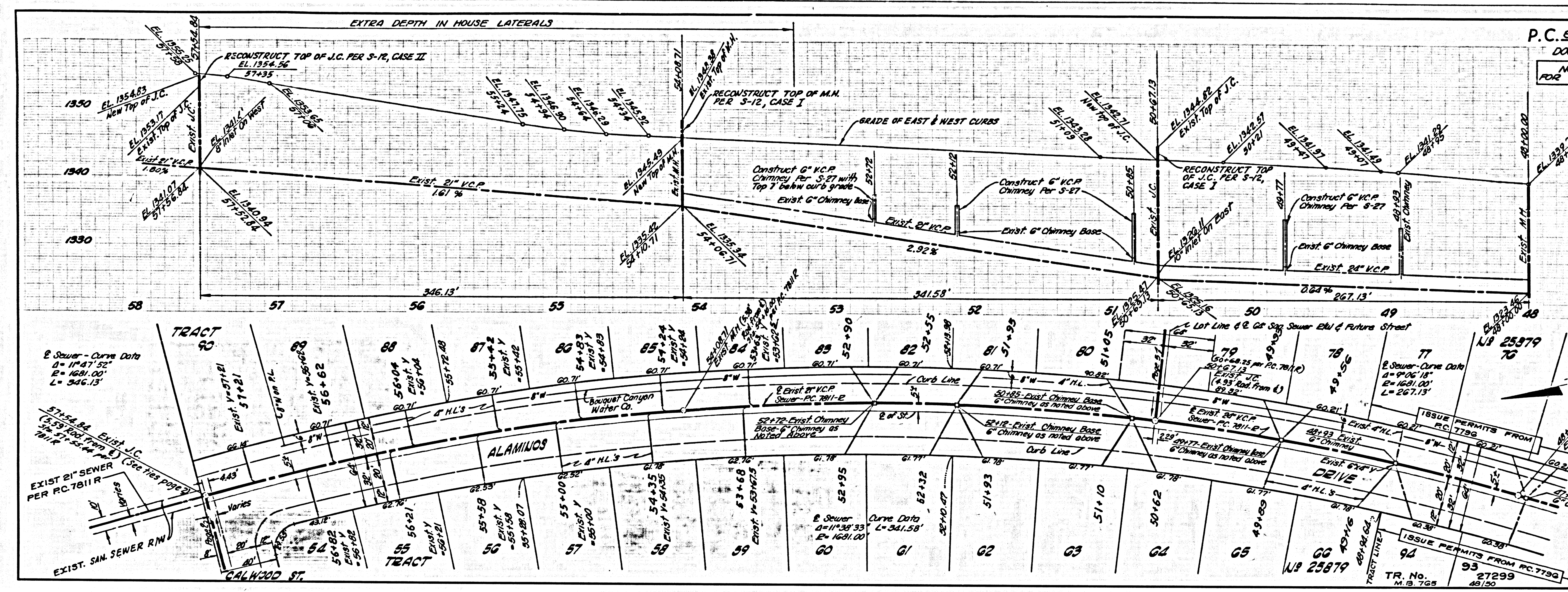
40545



P.C. 8007 PAGE 8  
 DOUBLE SCALE  
 NO CHARGE FOR  
 CONNECTIONS

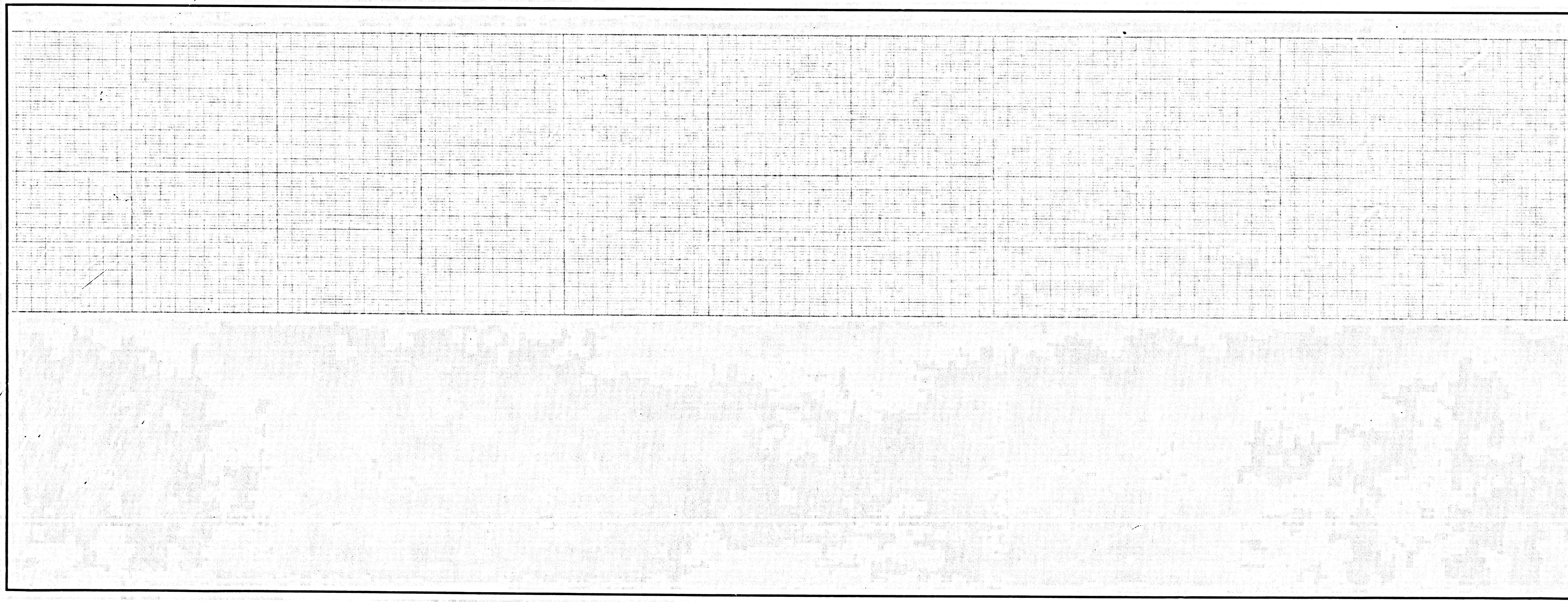
40546





P.C. 8007 PAGE 9  
 DOUBLE SCALE  
 NO CHARGE FOR CONNECTIONS

40547



P.C. PAGE