

**GENERAL SEWER NOTES**

- Sanitary sewers shall be constructed in accordance with the Standard Specifications for Public Works Construction hereinafter referred to as the Standard Specifications, Special Provisions and Standard Plans on file in the Office of the County Engineer.
- For Legend see Standard Plan S-1.
- All pipe is standard depth vitrified clay pipe except as noted.
- Vitrified clay pipe joints shall be Type "D", "F" or "G", per Section 208-2 of Standard Specifications.
- "T" or "Y" branches may be used for connection to main line sewers, except as noted.
- All structures shall be brick manholes per S-3.
- Use standard manhole frames and covers per Standard Plan S-15.
- Sewer pipe and appurtenances shall be abandoned in accordance with Section 306-3 of Standard Specifications.
- Sewers to be tested for leakage per Section 306-2.3.7 of Standard Specifications.
- All State and Local trench safety orders will be strictly enforced.
- Existing sewer services and flow shall be maintained at all times.
- No revisions shall be made to these plans without the approval of the County Engineer.
- In addition to standards listed above, the following latest revised Standard Plans shall apply in the construction of this project - S-2, S-17, S-21, S-22, S-23, S-26, S-33.
- For Force Main use Class 150 cast iron pipe per Sec. 207-9.1(c)(2) or (3) of Std. Specs. cement lined with mechanical joints.
- Use Case I Standard Bedding for Sewer Pipe per S-21.
- The Contractor shall secure a fee-exempt Construction Permit from the County Engineer before starting sewer construction. Application for this permit is to be made to the County Engineer, Sanitation Division, Room 309, 108 West Second Street, Los Angeles 12, California.

County Sanitation Districts shall be notified prior to the following so that required inspection can be made (Phone: 691-4666)

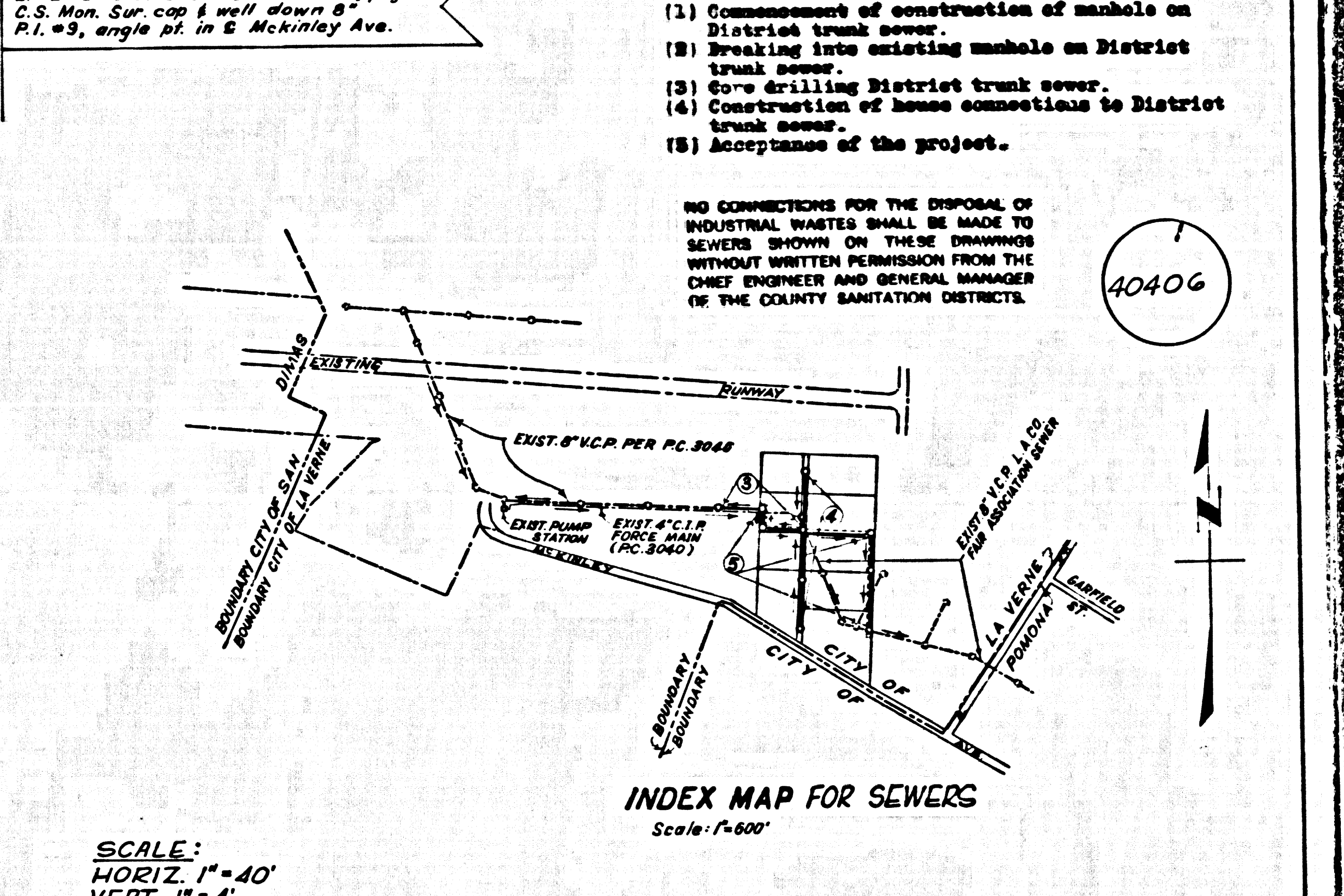
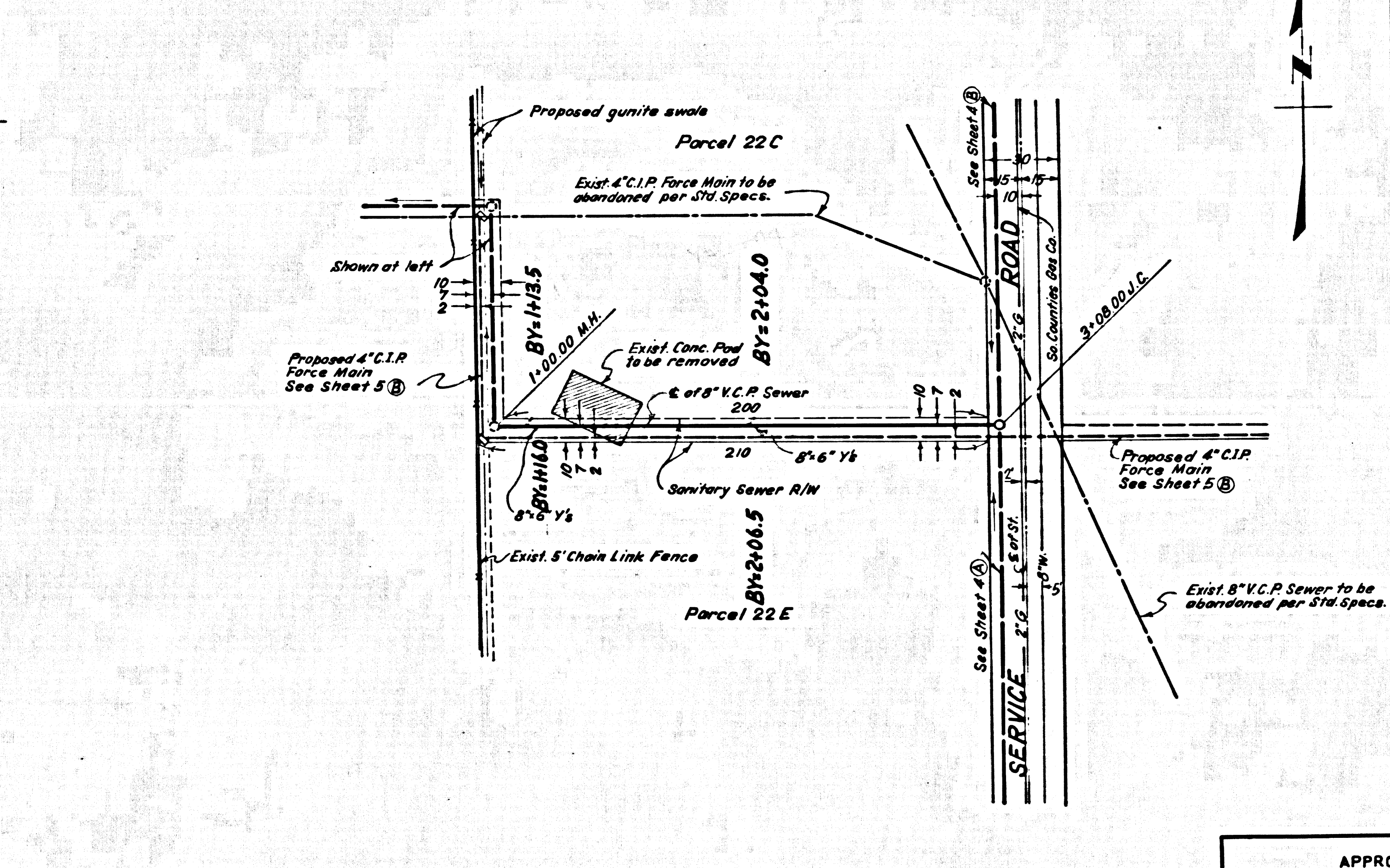
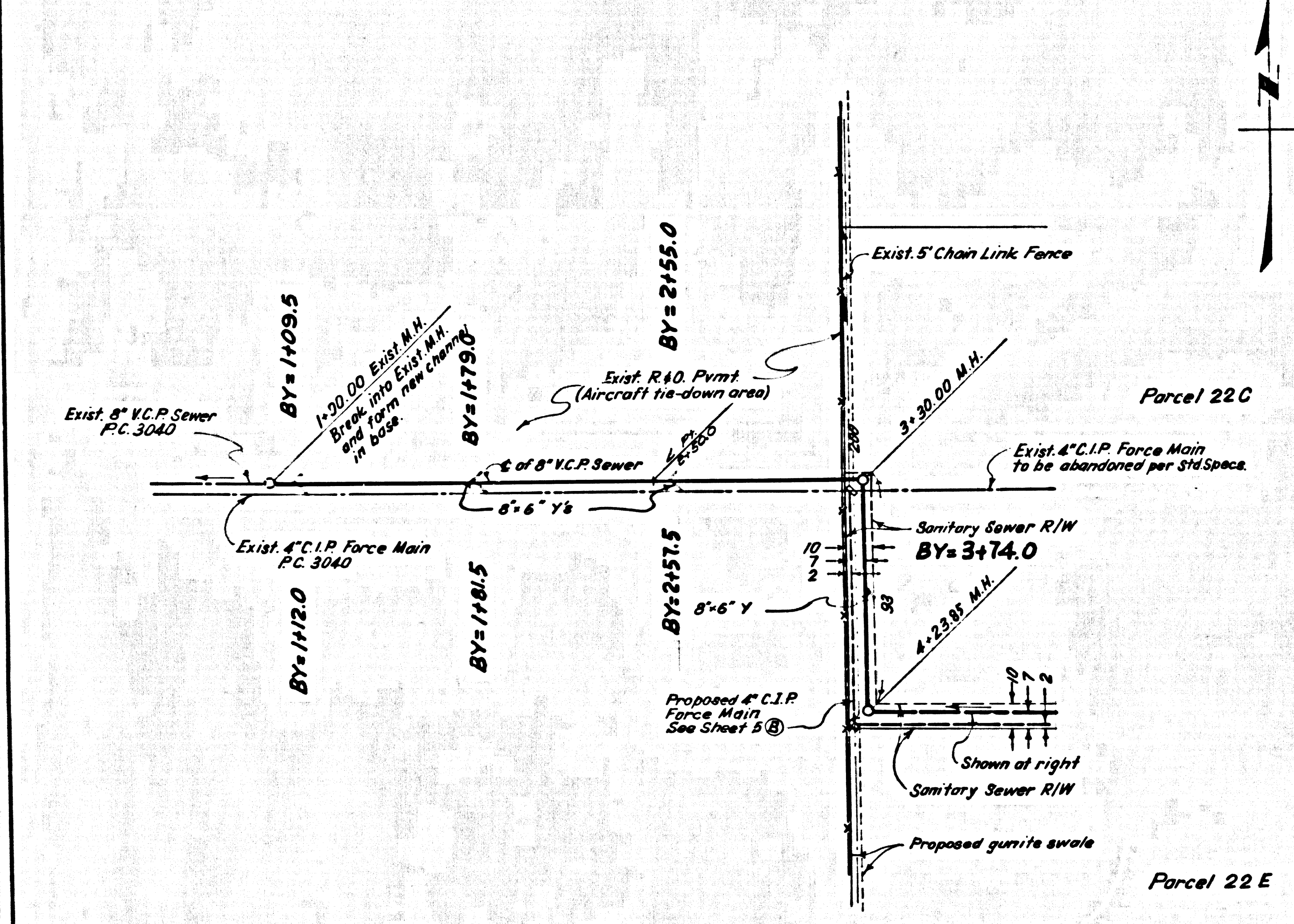
- Commencement of construction of manhole on District trunk sewer.
- Breaking into existing manhole on District trunk sewer.
- Core drilling District trunk sewer.
- Construction of house connection to District trunk sewer.
- Acceptance of the project.

NO CONNECTIONS FOR THE DISPOSAL OF INDUSTRIAL WASTES SHALL BE MADE TO SEWERS SHOWN ON THESE DRAWINGS WITHOUT WRITTEN PERMISSION FROM THE CHIEF ENGINEER AND GENERAL MANAGER OF THE COUNTY SANITATION DISTRICTS.

40406

**INDEX MAP FOR SEWERS**  
Scale: 1"=600'

B.M. BF-3 Elev. 982.516 F.B. 1836, page 161  
C.S. Mon. Sur. cap & well down 8'  
R.I. #3, angle pt. in S. McVittrey Ave.



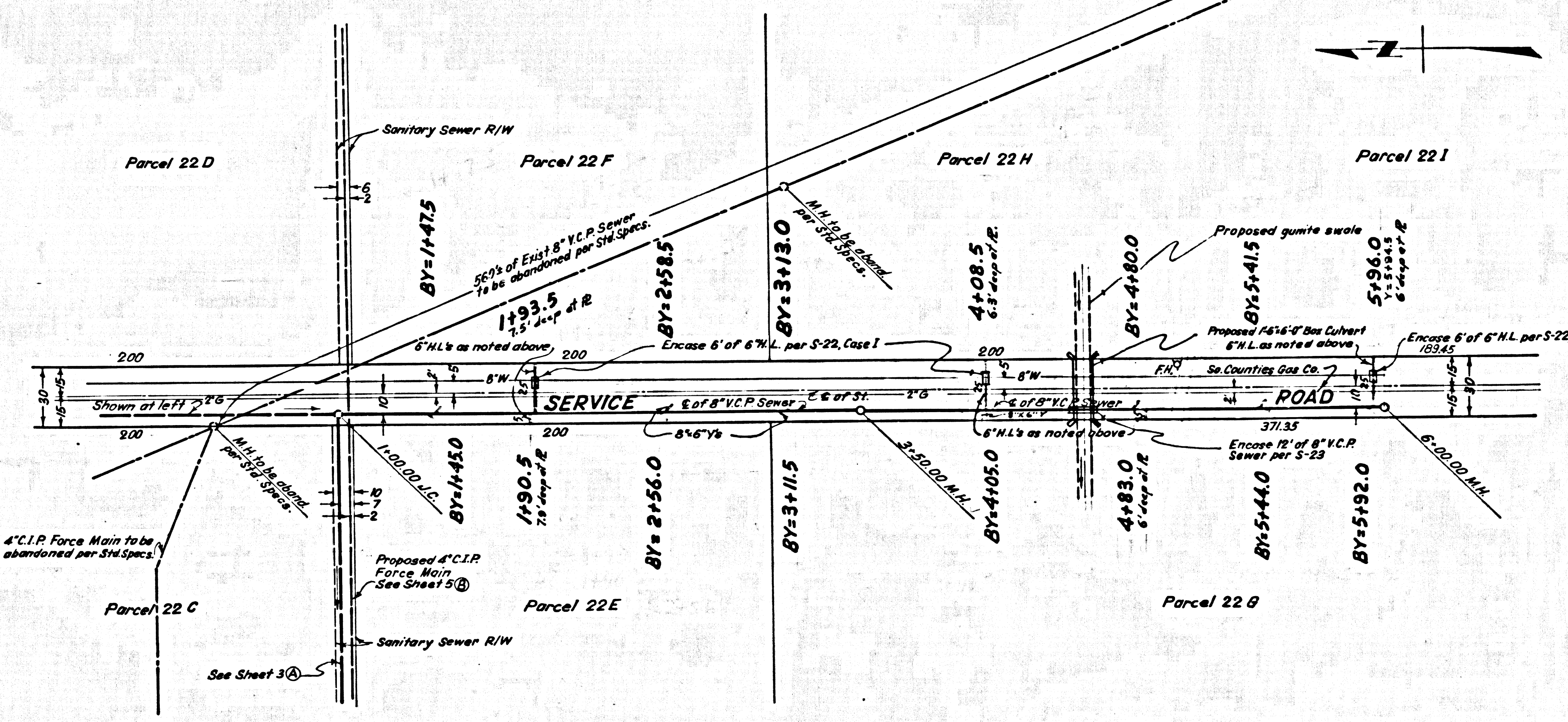
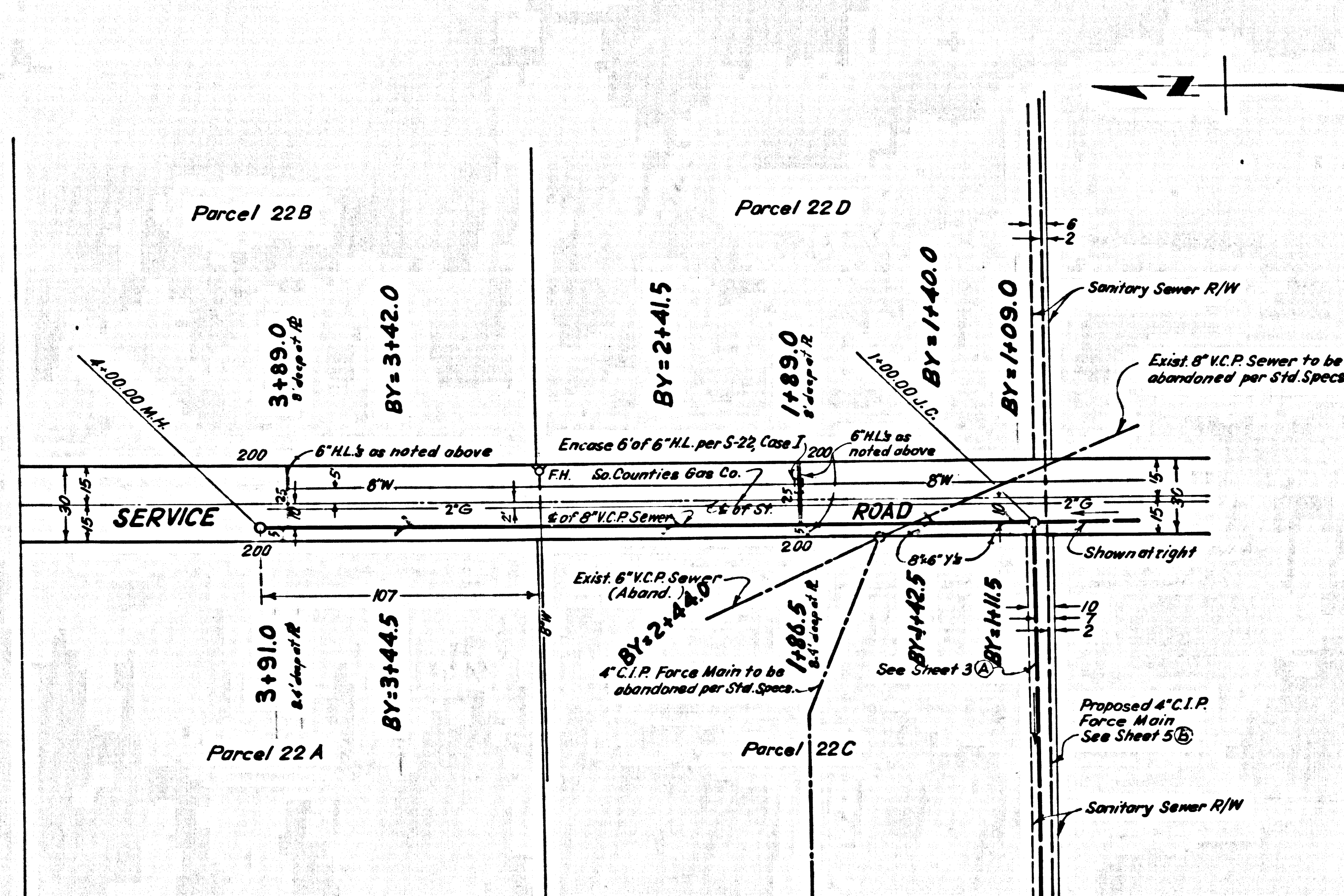
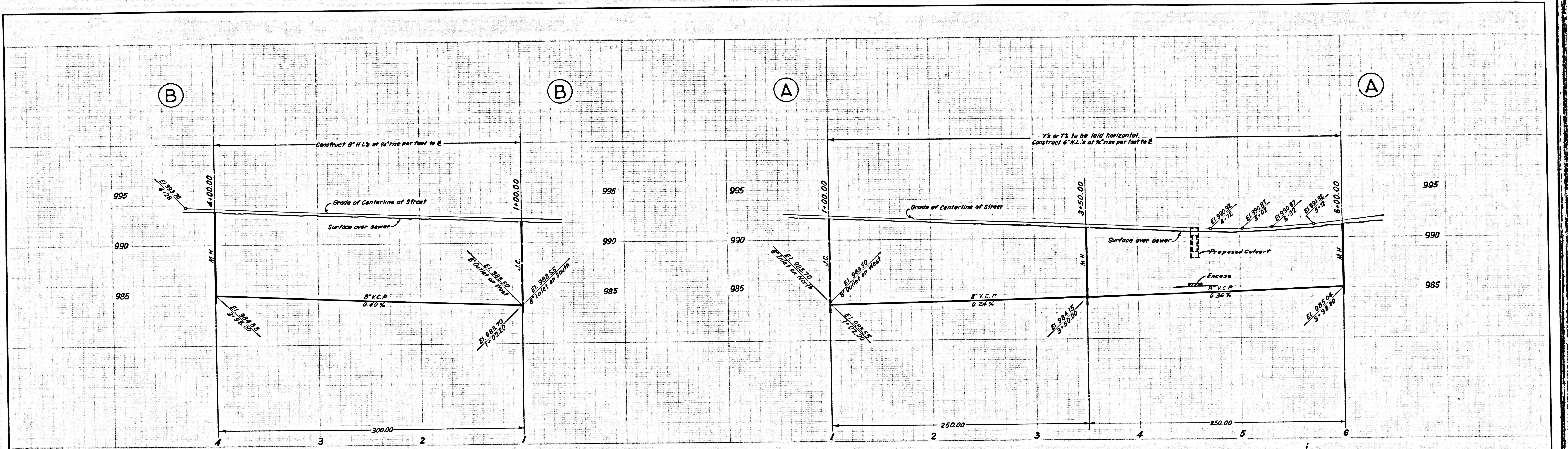
APPROVED:  
**JOHN D. PARKHURST**  
CHIEF ENGINEER  
CO. SAN. DIST. NO. 21

DEPARTMENT OF THE  
COUNTY ENGINEER  
JOHN A. LARSEN COUNTY ENGINEER  
COUNTY OF LOS ANGELES

DATE  
FEB. 1968

**BRACKETT FIELD**  
SANTARY SEWER SYSTEM  
TENANT SITE  
DEVELOPMENT  
CASH CONTRACT NO. 8009

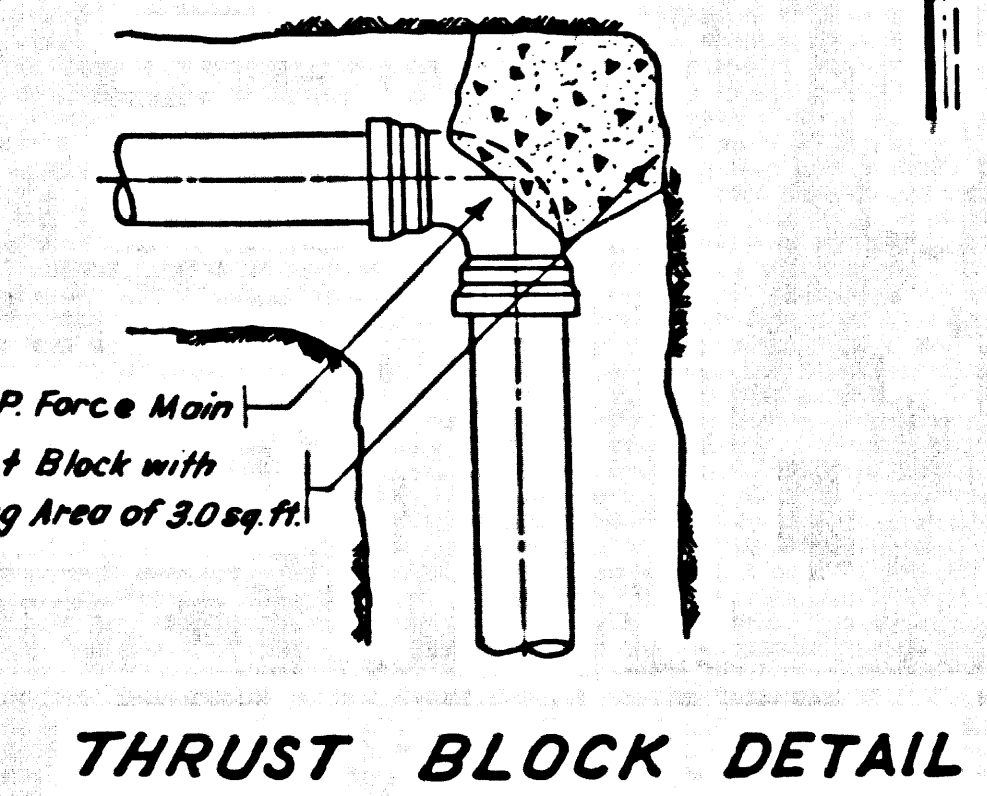
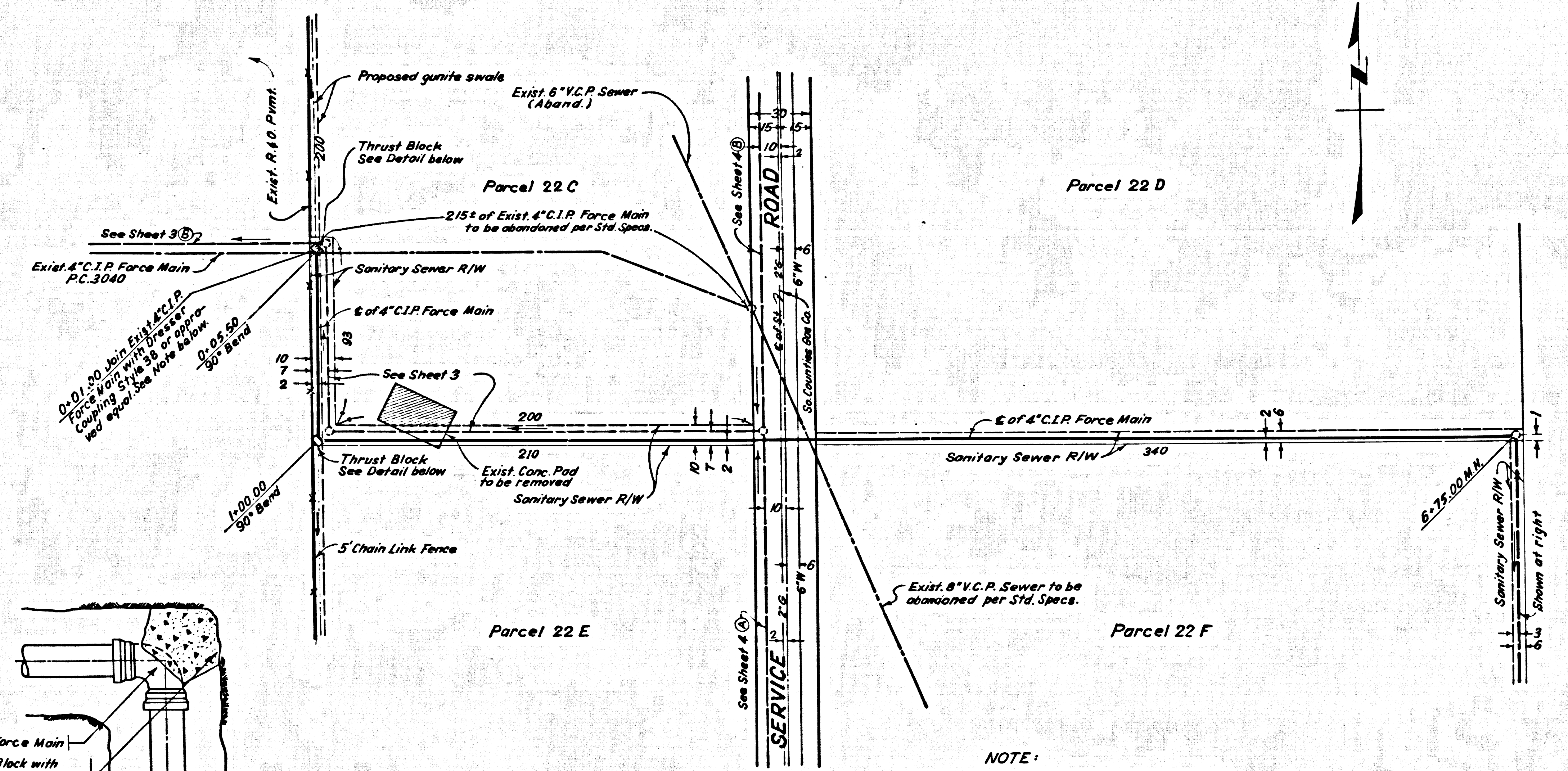
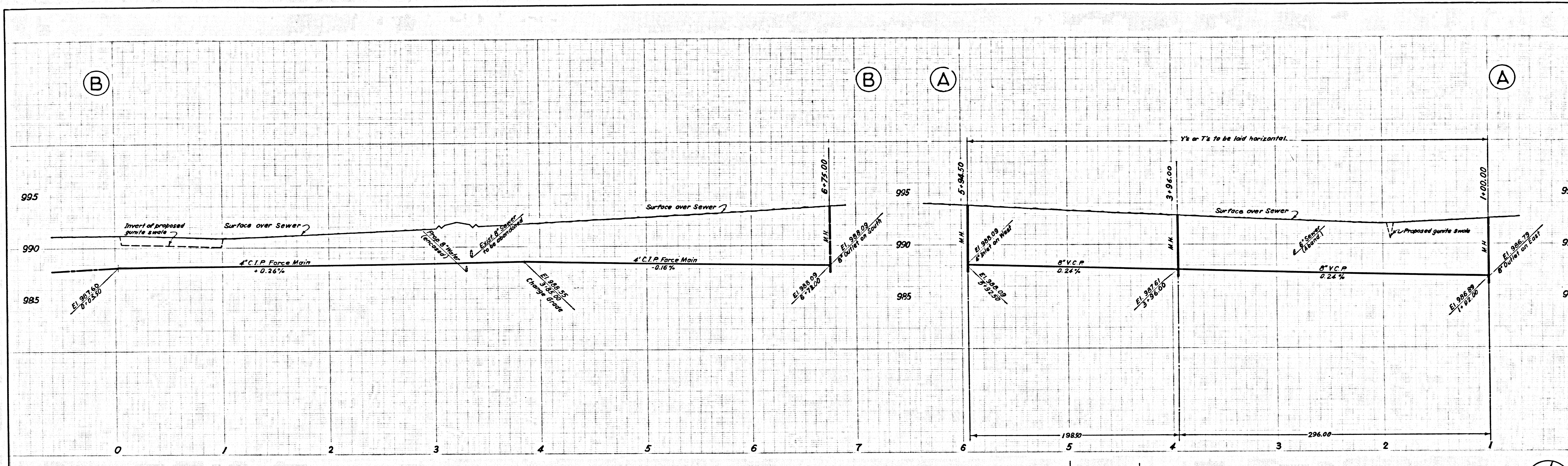
SPEC. NO.  
2785 DD  
WORK ORDER  
744021  
CAPITAL PROJECT  
7440  
SHEET NO.  
3  
OF 9 SHEETS



SCALE:  
HORIZ-1"=40'  
VERT-1"=4'

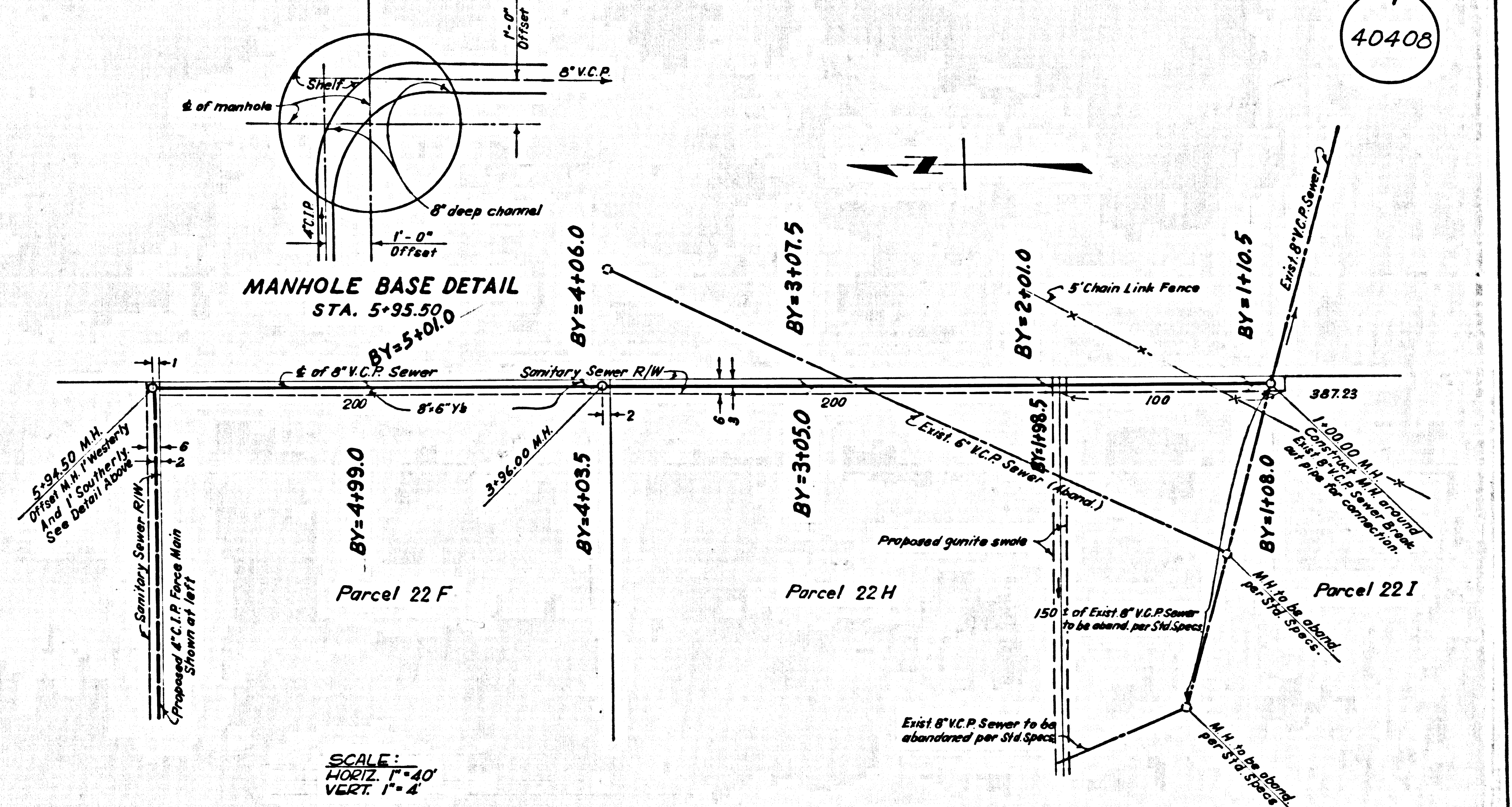
DEPARTMENT OF THE COUNTY ENGINEER JOHN A. LARSEN COUNTY ENGINEER COUNTY OF LOS ANGELES	DATE FEB. 1968 DESIGNED BY JOHN A. LARSEN S.E.E. NO. 14190 DATE 2-7-68 CHECKED BY W. J. WOOD DRAWN BY GONZALEZ-RUIZ AS BUILT CORRECTIONS CHRISTIANSEN	BRACKETT FIELD SANITARY SEWER SYSTEM TENANT SITE DEVELOPMENT CASH CONTRACT NO. 8009	SPEC. NO. 2785 DD SOP'S ORDER 7440.21 CAPITAL PROJECT 7440 SHEET NO. 4 OF 5 SHEETS
--	---	---	--

40407



THRUST BLOCK DETAIL

NOTE:  
 The Contractor shall notify  
 Mr. Carl Pearson, County Sewer  
 Maintenance Superintendent,  
 Tel. 629-4747 Ext. 81461, at least  
 24 hours before making connection  
 to existing 4\"/>



MANHOLE BASE DETAIL  
 STA. 5+35.50

SCALE:  
 HORIZ. 1"=40'  
 VERT. 1"=4'

DEPARTMENT OF THE COUNTY ENGINEER JOSH A. LAMBE COUNTY ENGINEER COUNTY OF LOS ANGELES	DATE FEB. 1968	BRACKETT FIELD	SPEC. NO. 2785 DL'
	DESIGNED BY W. J. ...		BOOK NO. OR 74.40.21
APPROVED: <i>[Signature]</i> ASST. DIVISION ENGINEER SANITATION DIVISION 2-7-68	DATE FEB. 1968	SANITARY SEWER SYSTEM TENANT SITE DEVELOPMENT CASH CONTRACT NO. 8009	CAPITAL PROJECT 74.60 SHEET NO. 5 OF 5 SHEETS