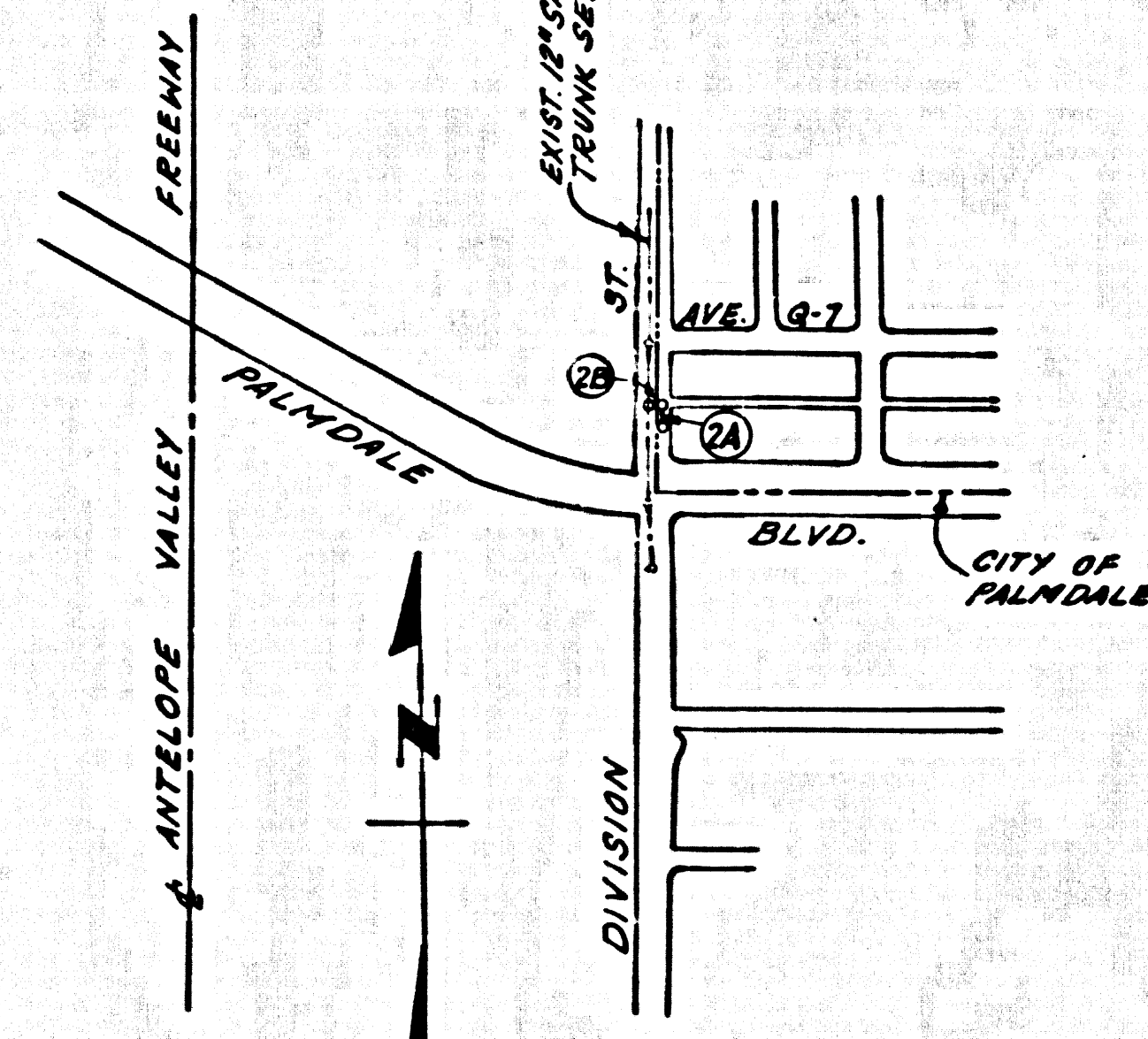


B.M. 34 111 ELEV. 2682.224
 L & T S. CURB OF N. SERVICE RD.
 PALMDALE BLVD. 70' E/O DIVISION
 ST. 45' N/O & PALMDALE BLVD.
 PALMDALE QUAD. 19 55

THE FOLLOWING COUNTY ENGINEER STANDARD PLANS APPLY TO THIS PROJECT

LEGEND	S-1
MINIMUM EXCAVATION SAFETY REQUIREMENTS	S-2
BRICK MANHOLE	S-3
NON REINFORCED PRECAST CONCRETE MANHOLE	S-5
REINFORCED PRECAST CONCRETE MANHOLE	S-6
MANHOLE FRAME AND COVER	S-15
MANHOLE STEP	S-17
BEDDING FOR SEWER PIPE	S-21
PIPE OR TEE SUPPORT	S-26
ALLOWABLE TRENCH WIDTHS	S-33



INDEX MAP
 SCALE: 1" = 600'

NOTE: IT SHALL BE THE RESPONSIBILITY OF THE CONTRACTOR TO ASCERTAIN AND VERIFY THE TRUE LOCATION AND DEPTH OF THE 8" WATER LINE SHOWN HEREON PRIOR TO THE START OF CONSTRUCTION AND TO NOTIFY THE OWNERS OF THE UTILITY CONCERNED BEFORE STARTING WORK.

PALMDALE BLDG. DIST. NO. 8.1

- NOTES:
- PROVIDE STAKES ON THE PROPERTY LINE OR PROPERTY LINES PRODUCED AT RIGHT ANGLES TO THE SEWER LINE AT THE CENTER LINE OF EACH MANHOLE.
 - NO REPRESENTATIVE OF THE COUNTY ENGINEER WILL SURVEY OR LAY OUT ANY PORTION OF THE WORK.
 - THE PRIVATE ENGINEER SHALL FURNISH THE COUNTY ENGINEER WITH GRADE SHEETS AND STATIONING FOR ALL HOUSE LATERALS AND "T" BRANCHES AND SHALL PROVIDE STAKES FOR THEM AT THEIR PROPER LOCATIONS WITH STATIONING PLAINLY MARKED. ALL HOUSE LATERALS SHALL BE CONSTRUCTED IN A STRAIGHT ALIGNMENT AT RIGHT ANGLES FROM THE MAIN LINE SEWER EXCEPT AS SHOWN ON THE PLANS. HOUSE LATERALS FROM CHIMNEYS SHALL NOT HAVE AN ANGLE OF LESS THAN 45° WITH THE MAIN LINE SEWER. ANY CHANGE IN ALIGNMENT SHALL BE REQUESTED IN WRITING BY THE PRIVATE ENGINEER.
 - THE PRIVATE ENGINEER SHALL FURNISH THE HOUSE LATERAL DEPTH AT THE PROPERTY LINE BELOW THE TOP OF CURB ELEVATION FOR EACH HOUSE LATERAL ON THE GRADE SHEET.
 - NO REVISIONS SHALL BE MADE IN THESE PLANS WITHOUT THE APPROVAL OF THE COUNTY ENGINEER.
 - THE CONTRACTOR SHALL NOTIFY THE CONSTRUCTION DIVISION BY TELEPHONE, MADISON 9-474, EXT. 8158, AT LEAST TWENTY-FOUR HOURS BEFORE STARTING ANY WORK UNDER THIS CONTRACT.
 - ALL STRUCTURES SHALL BE EITHER BRICK MANHOLES PER S-3 OR PRECAST CONCRETE MANHOLES PER S-5 OR S-6 EXCEPT AS NOTED.
 - USE STANDARD MANHOLE FRAMES AND COVERS, S-15, EXCEPT AS NOTED.
 - MANHOLE TOPS IN UNIMPROVED RIGHTS-OF-WAY TO BE SIX INCHES ABOVE FINISHED GRADE.
 - USE EXTRA STRENGTH PIPE. ALL PIPE IS STANDARD DEPTH EXCEPT AS NOTED.
 - USE 48" DIAMETER COMPRESSION JOINTS FOR ALL V.C.P. JOINTS PER SPEC. 605-25, 25-2-2.
 - IF A POWER POLE IS WITHIN THREE FEET OF THE SEWER, THE POWER SHALL BE ENCASED, PER S-23, TWO FEET ON EACH SIDE FROM THE POINT OF INTERFERENCE.
 - IF DURING THE COURSE OF CONSTRUCTION IT IS DETERMINED THAT THERE IS LESS THAN FOUR FEET OF COVER OVER THE TOP OF A MAIN LINE OR HOUSE LATERAL V.C.P. SEWER WHICH IS NOT INDICATED ON THE PLANS, THE PIPE SHALL BE ENCASED PER S-23, UNLESS OTHERWISE APPROVED BY THE COUNTY ENGINEER.
 - HOUSE LATERALS TO BE CONSTRUCTED WITH INVERTS AT PROPERTY LINE 4 FEET BELOW CURB GRADE EXCEPT AS NOTED.
 - RESURFACE ALL TRENCHES WITHIN PAVED AREAS TO MEET L.A. COUNTY ROAD DEPT. OR CALIFORNIA STATE HIGHWAY REQUIREMENTS IN ACCORDANCE WITH PERMITS.
 - SEWAGES TO BE TESTED FOR LEAKAGE PER SECTION 306-3 3-7 STANDARD SPECIFICATIONS.
 - ALL STATE AND LOCAL TRENCH SAFETY ORDERS WILL BE STRICTLY ENFORCED.

County Sanitation Districts shall be notified prior to the following so that required inspection can be made: (Phone: 337-1025)

- Commencement of construction of manhole on District trunk sewer.
- Breaking into existing manhole on District trunk sewer.
- Core drilling District trunk sewer.
- Construction of house connections to District trunk sewer.
- Acceptance of the project.

NO CONNECTIONS FOR THE DISPOSAL OF INDUSTRIAL WASTES SHALL BE MADE TO SEWERS SHOWN ON THESE DRAWINGS WITHOUT WRITTEN PERMISSION FROM THE CHIEF ENGINEER AND GENERAL MANAGER OF THE COUNTY SANITATION DISTRICTS.

COLLECT CHARGES AS INDICATED
Richard L. Spuehler

NOTICE TO CONTRACTOR
 The existence and location of any underground utility pipes or structures shown on these plans are obtained by a search of the available records. To the best of my knowledge there are no existing utility pipes or structures shown on these plans. The contractor is required to take due precautionary measures to avoid the utility lines shown and any other lines not shown on these plans.
Richard L. Spuehler

PROFILE, ALIGNMENT AND GRADE OF P.C. 8010
 SANITARY SEWERS PAGE 1

TO BE CONSTRUCTED IN
 DIVISION STREET
 PRIVATE CONTRACT NO. 8010

W.S. 65
 1 SHEETS, 2 PAGES
 SCALE: HORIZ. 1" = 40' VERT. 1" = 4'
 JANUARY, 1968
 PREPARED IN THE OFFICES OF
 TRI-STATE ENGINEERING COMPANY
 615 S. BAYVIEW AVE., FULLERTON, CALIFORNIA
 BY: *Thomas L. Sullivan*
 REG. C. E. NO. 12827

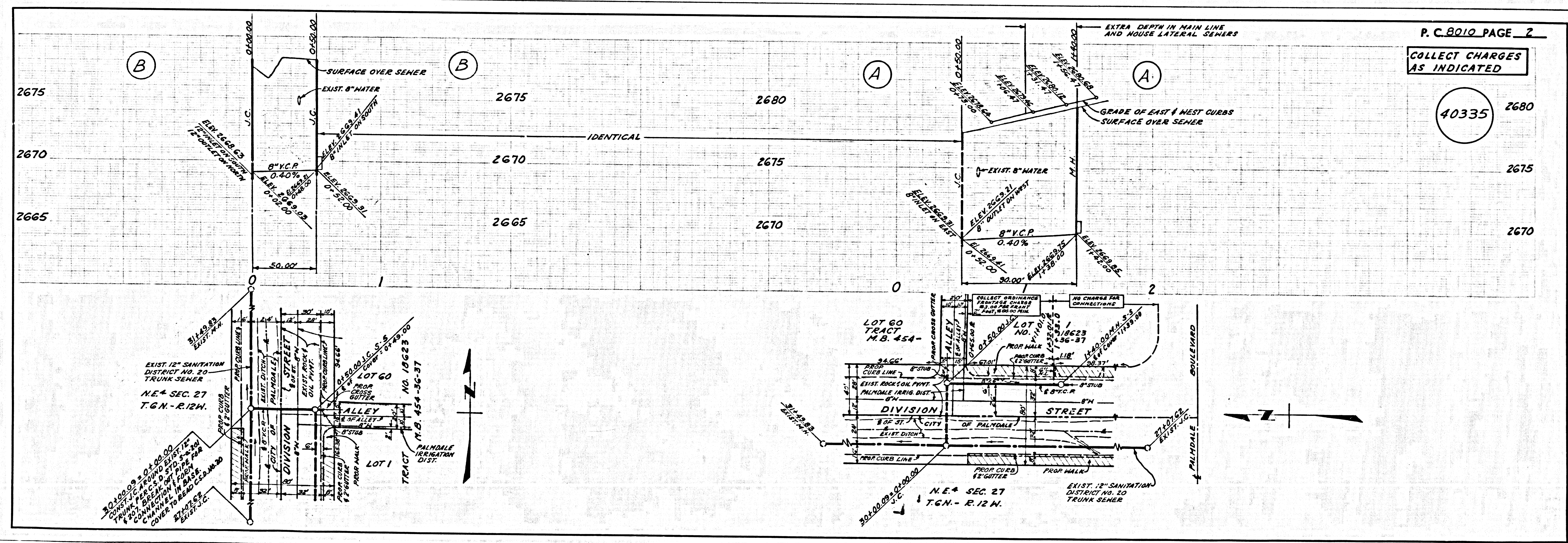
40334

FOR LEGEND SEE PLAN NO. S-1

NOTES:
 GRADES TO WHICH THIS IMPROVEMENT IS TO BE CONSTRUCTED ARE SHOWN ON PLANS AND PROFILES. GRADE POINTS FOR TOP OF CURBS, CENTER LINE OF STREETS, OR CENTER LINE OF ALLEYS ARE SHOWN BY CIRCLES ON PROFILES. AT ALL POINTS BETWEEN DESIGNATED ELEVATIONS ARE IN FEET ABOVE U.S.C. & G.S. MEAN LEVEL DATUM OF 1929.
 THE SEWING AND THE DATA HEREON ARE HEREBY MADE A PART OF THE SPECIFICATIONS.
 WORK SHALL BE CONSTRUCTED ACCORDING TO STANDARD SPECIFICATIONS AND PUBLIC UTILITY DISTRICTS OF CALIFORNIA ENGINEER'S SPECIAL PUBLICATION NUMBER 715, 1954, LATEST EDITION. ALL CONTRACTORS SHALL BE CONSIDERED TO HAVE BEEN ADVISED OF THIS BEFORE WORK CAN BE STARTED. THE CONTRACTOR MUST OBTAIN A PERMIT TO EXCAVATE IN COUNTY STREETS FROM THE L.A. COUNTY ROAD DEPT., DISTRICT OFFICE NO. 10, AND PAY A FEE TO THE COUNTY ENGINEER, ROOM 303, COUNTY ENGINEERING BUILDING, CONSTRUCTION INSPECTION AND RECORD PLANS DIVISION, MEDICAL OFFICE, SUFFICIENT TO COVER THE COST OF THE APPROVAL OF THIS PLAN BY THE COUNTY OF LOS ANGELES DOES NOT CONSTITUTE A REPRESENTATION AS TO THE ACCURACY OF THE LOCATION OF OR THE EXISTENCE OR NON-EXISTENCE OF ANY UNDERGROUND UTILITY PIPE, OR STRUCTURE WITHIN THE LIMITS OF THIS PROJECT. THIS NOTE APPLIES TO ALL PAGES.
 IF WORK IS TO BE DONE IN A STATE HIGHWAY, A PERMIT MUST BE OBTAINED FROM THE STATE OF CALIFORNIA, DIVISION OF HIGHWAYS, 126 SOUTH SPRING STREET, LOS ANGELES, CALIFORNIA.

COUNTY OF LOS ANGELES, CALIFORNIA
 JOHN A. LAMBIE, COUNTY ENGINEER
 I. D. PARKHURST, CHIEF ENGINEER
 APPROVED BY: *Richard L. Spuehler*
 OFFICE ENGINEER

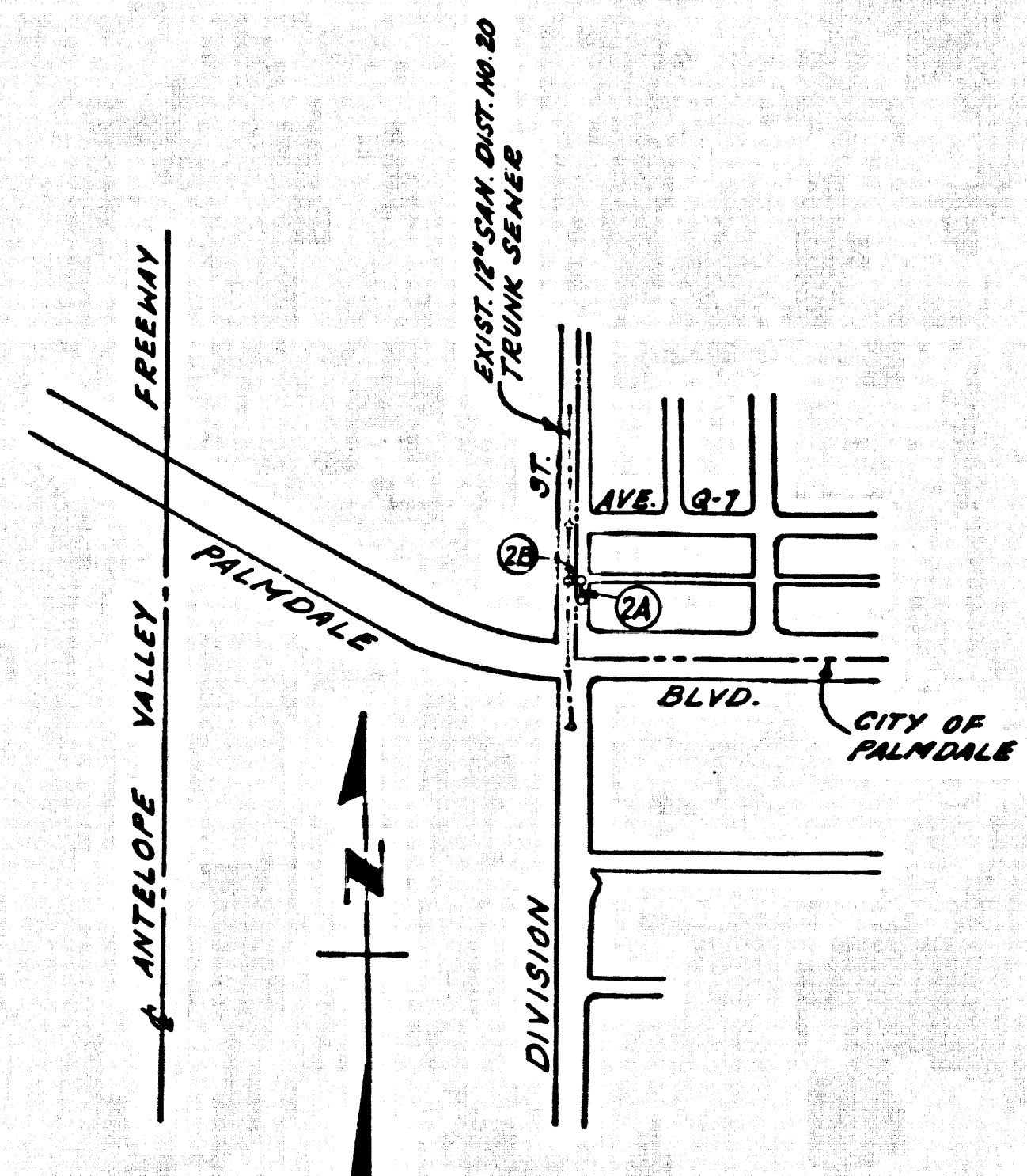
J.N. 0368.96



B.M. 54 111 ELEV. 2682.224
 L & T S. CURB OF N. SERVICE RD.
 PALMDALE BLVD. TO 510 & DIVISION
 ST. 145' N10 & PALMDALE BLVD.
 PALMDALE QUAD. 19 55

THE FOLLOWING COUNTY ENGINEER STANDARD PLANS APPLY TO THIS PROJECT

LEGEND	3-1
MINIMUM EXCAVATION SAFETY REQUIREMENTS	3-2
BRICK MANHOLE	3-3
NON REINFORCED PRECAST CONCRETE MANHOLE	3-5
REINFORCED PRECAST CONCRETE MANHOLE	3-6
MANHOLE FRAME AND COVER	3-15
MANHOLE STEP	3-17
BEDDING FOR SENER PIPE	3-21
NITE OR TEE SUPPORT	3-22
ALLOWABLE TRENCH WIDTHS	3-33



INDEX MAP
 SCALE: 1" = 600'

NOTE: IT SHALL BE THE RESPONSIBILITY OF THE CONTRACTOR TO ASCERTAIN AND VERIFY THE TRUE LOCATION AND DEPTH OF THE 8" WATER LINE SHOWN HEREON PRIOR TO THE START OF CONSTRUCTION AND TO NOTIFY THE OWNERS OF THE UTILITY CONCERNED BEFORE STARTING WORK.

PALMDALE BLDG. DIST. NO. 8.1

PROFILE, ALIGNMENT AND GRADE OF
SANITARY SEWERS PAGE 1
 TO BE CONSTRUCTED IN
DIVISION STREET

PRIVATE CONTRACT NO. 8010

W.S. 65
 1 SHEETS, 2 PAGES

SCALE: HORIZ. 1" = 40' VERT. 1" = 4'

PREPARED IN THE OFFICES OF
TRI-STATE ENGINEERING COMPANY
 615 S. BAYBOND AVE., FULLERTON, CALIFORNIA
 BY: *Thomas L. Sullivan*
 REG. C. E. NO. 12827

40334

FOR LEGEND SEE PLAN NO. S-1

- NOTES:
- PROVIDE STAKES ON THE PROPERTY LINE OR PROPERTY LINES PRODUCED AT RIGHT ANGLES TO THE SEWER LINE AT THE CENTER LINE OF EACH MANHOLE.
 - NO REPRESENTATIVE OF THE COUNTY ENGINEER WILL SURVEY OR LAY OUT ANY PORTION OF THE WORK.
 - THE PRIVATE ENGINEER SHALL FURNISH THE COUNTY ENGINEER WITH GRADE SHEETS AND STATIONING FOR ALL HOUSE LATERALS AND TEE BRANCHES AND SHALL PROVIDE STAKES FOR THEM AT THEIR PROPER LOCATIONS WITH STATIONING PLAINLY MARKED. ALL HOUSE LATERALS SHALL BE CONSTRUCTED IN A STRAIGHT ALIGNMENT AT RIGHT ANGLES FROM THE MAIN LINE SEWER EXCEPT AS SHOWN ON THE PLANS. HOUSE LATERALS FROM CHIMNEYS SHALL NOT HAVE AN ANGLE OF LESS THAN 45° WITH THE MAIN LINE SEWER. ANY CHANGE IN ALIGNMENT SHALL BE REQUESTED IN WRITING BY THE PRIVATE ENGINEER.
 - THE PRIVATE ENGINEER SHALL FURNISH THE HOUSE LATERAL DEPTH AT THE PROPERTY LINE BELOW THE TOP OF CURB ELEVATION FOR EACH HOUSE LATERAL ON THE GRADE SHEET.
 - NO REVISIONS SHALL BE MADE IN THESE PLANS WITHOUT THE APPROVAL OF THE COUNTY ENGINEER.
 - THE CONTRACTOR SHALL NOTIFY THE CONSTRUCTION DIVISION BY TELEPHONE, MADISON 9-467, EXT. 81381, AT LEAST TWENTY-FOUR HOURS BEFORE STARTING ANY WORK UNDER THIS CONTRACT.
 - ALL STRUCTURES SHALL BE EITHER BRICK MANHOLES PER S-3 OR PRECAST CONCRETE MANHOLES PER S-5 OR S-6 EXCEPT AS NOTED.
 - USE STANDARD MANHOLE FRAMES PER S-15, S-16, S-17, S-18, S-19, S-20, S-21, S-22, S-23, S-24, S-25, S-26, S-27, S-28, S-29, S-30, S-31, S-32, S-33, S-34, S-35, S-36, S-37, S-38, S-39, S-40, S-41, S-42, S-43, S-44, S-45, S-46, S-47, S-48, S-49, S-50, S-51, S-52, S-53, S-54, S-55, S-56, S-57, S-58, S-59, S-60, S-61, S-62, S-63, S-64, S-65, S-66, S-67, S-68, S-69, S-70, S-71, S-72, S-73, S-74, S-75, S-76, S-77, S-78, S-79, S-80, S-81, S-82, S-83, S-84, S-85, S-86, S-87, S-88, S-89, S-90, S-91, S-92, S-93, S-94, S-95, S-96, S-97, S-98, S-99, S-100.
 - MANHOLE TOPS IN UNIMPROVED RIGHTS-OF-WAY TO BE SIX INCHES ABOVE FINISHED GRADE.
 - USE EXTRA STRENGTH PIPE, ALL PIPE IS STANDARD DEPTH EXCEPT AS NOTED.
 - USE 48-INCH RADIUS CURVES UNLESS OTHERWISE NOTED.
 - IF A POWER POLE IS WITHIN THREE FEET OF THE SEWER, THE SEWER SHALL BE ENCASED, PER S-21, TWO FEET ON EACH SIDE FROM THE POINT OF INTERFERENCE.
 - IF DURING THE COURSE OF CONSTRUCTION IT IS DETERMINED THAT THERE IS LESS THAN FOUR FEET OF COVER OVER THE TOP OF A MAIN LINE OR HOUSE LATERAL V.C.P. SEWER WHICH IS NOT INDICATED ON THE PLANS, THE PIPE SHALL BE ENCASED PER S-21, UNLESS OTHERWISE APPROVED BY THE COUNTY ENGINEER.
 - HOUSE LATERALS TO BE CONSTRUCTED WITH INVERTS AT PROPERTY LINE & FEET BELOW CURB GRADE EXCEPT AS NOTED.
 - RESURFACE ALL TRENCHES WITHIN PAVED AREAS TO MEET L.A. COUNTY ROAD DEPT. OR CALIFORNIA STATE HIGHWAY REQUIREMENTS IN ACCORDANCE WITH PERMITS.
 - SEWERS TO BE TESTED FOR LEAKAGE PER SECTION 306-2.3-7 STANDARD SPECIFICATIONS.
 - ALL STATE AND LOCAL TRENCH SAFETY ORDERS WILL BE STRICTLY ENFORCED.

County Sanitation Districts shall be notified prior to the following so that required inspection can be made: (Phone: 337-1025)

- Commencement of construction of manhole on District trunk sewer.
- Breaking into existing manhole on District trunk sewer.
- Core drilling District trunk sewer.
- Construction of house connections to District trunk sewer.
- Acceptance of the project.

NO CONNECTIONS FOR THE DISPOSAL OF INDUSTRIAL WASTES SHALL BE MADE TO SEWERS SHOWN ON THESE DRAWINGS WITHOUT WRITTEN PERMISSION FROM THE CHIEF ENGINEER AND GENERAL MANAGER OF THE COUNTY SANITATION DISTRICTS.

NOTICE TO CONTRACTOR

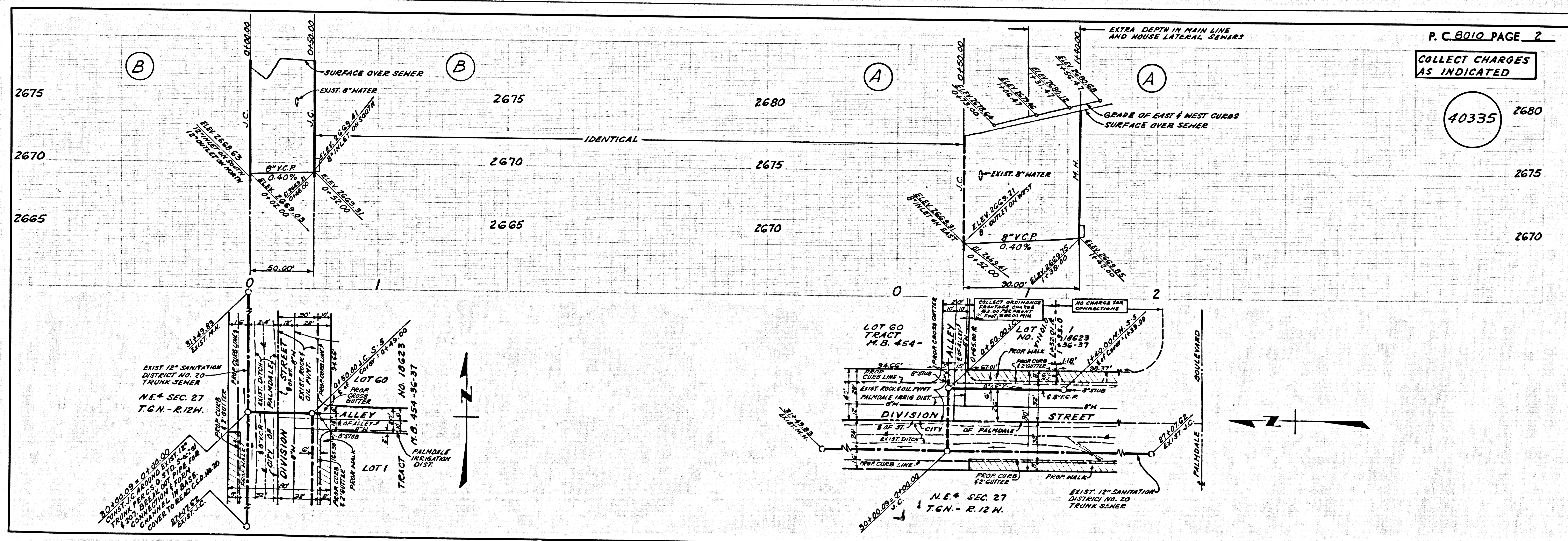
The existence and location of any underground utility pipes or structures shown on these plans are obtained by a search of the available records to the best of my knowledge. There are no existing utilities except as shown on these plans. The contractor is required to take due precautionary measures to protect the utility lines shown on these plans.

COLLECT CHARGES AS INDICATED
Richard K. Hopy

COUNTY OF LOS ANGELES, CALIFORNIA
 JOHN A. LAMBIE, COUNTY ENGINEER
 J. D. PARKHURST, CHIEF ENGINEER
 CO. SAN. DIST. NO. 20
 APPROVED BY: *J. D. Parkhurst*
 OFFICE ENGINEER

APPROVED BY: *John W. Anderson*
 REGIONAL ENGINEER
 CHECKED BY: *Richard K. Hopy*
 REG. C. E. NO. 16742

J.N. 0368.96



P. C. 8010 PAGE 2
COLLECT CHARGES AS INDICATED
 40335