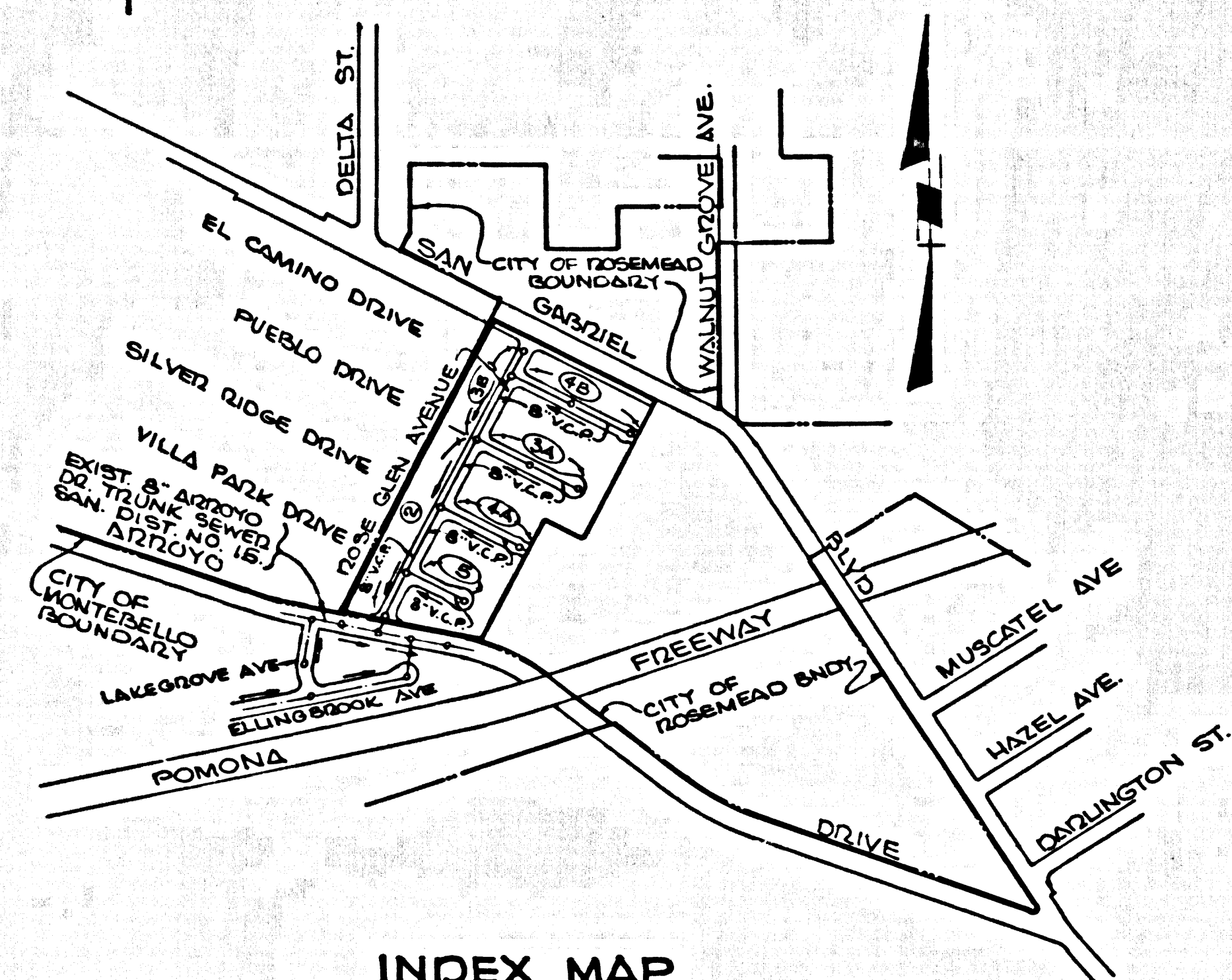


B.M. BY 3321 ELEV. 315.730
 C.S. MON AT CENTERLINE
 INTERSECTION OF DELTA STREET
 AND SAN GABRIEL BLVD.
 BASELINE (OVER) QUAD. 1965



INDEX MAP
 SCALE: 1" = 600'
 TRACT NO. 24918
 P.C. 8011

- THE FOLLOWING CITY ENGINEER STANDARD PLANS APPLY TO THIS PROJECT:
- LETTERS 1-1
 - MINIMUM EXCAVATION SAFETY REQUIREMENTS 1-2
 - BRICK MANHOLE 2-1
 - NON REINFORCED PRECAST CONCRETE MANHOLE 2-2
 - REINFORCED PRECAST CONCRETE MANHOLE 2-3
 - MANHOLE FRAME AND COVER 2-4
 - MANHOLE STEP 2-5
 - REGRIND FOR SEWER PIPE 2-6
 - CRUSHED LIME ENHANCEMENT 2-7
 - WYE OR TEE SUPPORT 2-8
 - ALLOWABLE TRENCH WIDTHS 2-9

County Sanitation Districts shall be notified prior to the following so that required inspection can be made (Phone: 337-1025)

- (1) Commencement of construction of manhole on District trunk sewer.
- (2) Breaking into existing manhole on District trunk sewer.
- (3) Core drilling District trunk sewer.
- (4) Construction of house connections to District trunk sewer.
- (5) Acceptance of the project.

NO CONNECTIONS FOR THE DISPOSAL OF INDUSTRIAL WASTES SHALL BE MADE TO SEWERS SHOWN ON THESE DRAWINGS WITHOUT WRITTEN PERMISSION FROM THE CHIEF ENGINEER AND GENERAL MANAGER OF THE COUNTY SANITATION DISTRICTS.

NOTE: CONTRACTOR MUST OBTAIN A PERMIT TO EXCAVATE IN CITY STREETS FROM THE CITY OF MONTEBELLO

ROSEMEAD BLDG. DIST. NO. 5.07

- NOTES:
1. PROVIDE STAKES ON THE PROPERTY LINE OR PROPERTY LINES PRODUCED AT RIGHT ANGLES TO THE SEWER LINE AT THE CENTER LINE OF EACH MANHOLE.
 2. NO REPRESENTATIVE OF THE CITY ENGINEER WILL SURVEY OR LAY OUT ANY PORTION OF THE WORK.
 3. THE PRIVATE ENGINEER SHALL FURNISH THE COUNTY ENGINEER WITH GRADE SHEETS AND STATIONING FOR ALL HOUSE LATERALS AND "Y" OR "T" BRANCHES AND SHALL PROVIDE STAKES FOR THEM AT THEIR PROPER LOCATIONS WITH STATIONING PLAINLY MARKED. ALL HOUSE LATERALS SHALL BE CONSTRUCTED IN A STRAIGHT ALIGNMENT AT RIGHT ANGLES FROM THE MAIN LINE SEWER EXCEPT AS SHOWN ON THE PLANS. HOUSE LATERALS FROM CHIMNEYS SHALL HAVE AN ANGLE OF LESS THAN 45° WITH THE MAIN LINE SEWER. ANY CHANGE IN ALIGNMENT SHALL BE REQUESTED BY WRITING BY THE PRIVATE ENGINEER.
 4. THE PRIVATE ENGINEER SHALL FURNISH THE HOUSE LATERAL DEPTH AT THE PROPERTY LINE BELOW THE TOP OF CURB ELEVATION FOR EACH HOUSE LATERAL ON THE GRADE SHEET.
 5. NO DIVISIONS SHALL BE MADE IN THESE PLANS WITHOUT THE APPROVAL OF THE CITY ENGINEER.
 6. THE CONTRACTOR SHALL NOTIFY THE CONSTRUCTION DIVISION BY TELEPHONE, MARCH 1-2-3, EXT. 8128, AT LEAST TWENTY-FOUR HOURS BEFORE STARTING ANY WORK UNDER THIS CONTRACT.
 7. ALL STRUCTURES SHALL BE SETTING BRICK MANHOLES PER 2-3 OR PRECAST CONCRETE MANHOLES PER 2-2 OR 2-4, EXCEPT AS NOTED.
 8. USE STANDARD MANHOLE FRAMES AND COVERS, 24" DEPTH AS NOTED.
 9. MANHOLE TOPS IN UNIMPROVED RIGHTS-OF-WAY TO BE SIX INCHES ABOVE FINISHED GRADE.
 10. VITRIFIED GLAY PIPE JOINTS SHALL BE TYPE "Y", "V", OR "W" PER STANDARD SPECIFICATIONS SECTION 200-2.
 11. USE EXTRA STRENGTH PIPE, ALL PIPE IS STANDARD DEPTH EXCEPT AS NOTED.
 12. IF A POWER POLE IS WITHIN THREE FEET OF THE SEWER, THE SEWER SHALL BE ENCASED, PER 2-23, TWO FEET ON EACH SIDE FROM THE POINT OF INTERFERENCE.
 13. IF DURING THE COURSE OF CONSTRUCTION IT IS DETERMINED THAT THERE IS LESS THAN FOUR FEET OF COVER OVER THE TOP OF A MAIN LINE OR HOUSE LATERAL V.C.P. SEWER WHICH IS NOT INDICATED ON THE PLANS, THE PIPE SHALL BE ENCASED PER 2-23, UNLESS OTHERWISE APPROVED BY THE CITY ENGINEER.
 14. HOUSE LATERALS TO BE CONSTRUCTED WITH INVERT AT PROPERTY LINE 4 FEET BELOW CURB GRADE EXCEPT AS NOTED.
 15. REINFORCE ALL TRENCHES WITHIN PAVED AREAS TO MEET L.A. COUNTY ROAD DEPT. OR CALIFORNIA STATE HIGHWAY REQUIREMENTS IN ACCORDANCE WITH PERMITS.
 16. TRENCHES TO BE TESTED FOR LEAKAGE PER SECTION 206-2, 3, 7 STD. SPECIFICATIONS.
 17. ALL STATE AND LOCAL TRENCH SAFETY ORDERS WILL BE STRICTLY ENFORCED.
 18. "TIE" BRANCHES MAY BE USED INSTEAD OF "WYE" BRANCHES IN ALL LOCATIONS EXCEPT AS NOTED.
 19. SEWER PIPE COVERINGS SHALL CONFORM TO 2-21.
 20. SPECIAL BACKFILL IN DESIGNATED AREAS:
 - (a) BACKFILL TRENCH AND REPLACE OTHER EXISTING DAMAGED SO AS TO ACHIEVE THE NATURAL OR FINISHED GRADES AND SURFACES SHOWN ON THE GRADING PLAN APPROVED FOR THIS TRACT BY THE BUILDING AND SAFETY DIVISION.
 - (b) ALL BACKFILL AND EXISTING DAMAGED SHALL BE COMPACTED TO A MINIMUM OF 90% OF MAXIMUM DENSITY PER A STANDARD PROVED METHOD OR TEST DESIGNATED AS MODIFIED. ACCEPTABLE COMPACTION OF SUCH COMPACTION SHALL BE SUBMITTED TO THE CONSTRUCTION DIVISION.

NOTICE TO CONTRACTOR

The existence and location of any underground utility pipes or structures shown on these plans are obtained by a search of the available records. To the best of my knowledge there are no existing utilities except as shown on these plans. The contractor is required to take due precautionary measures to protect the utility lines shown and any other lines not of record or not shown on these plans.

R. J. Anderson
 REC. 1/3/56

COLLECT CHARGES AS INDICATED

PROFILE, ALIGNMENT AND GRADE OF
 SANITARY SEWERS P.C. 8011
 TO BE CONSTRUCTED IN PAGE 1

TRACT NO. 24918

PRIVATE CONTRACT NO. 8011

W.S. 36, D-2
 3 SHEETS, 5 PAGES

SCALE: VERT. 1" = 4'
 HORIZ. 1" = 40'

PREPARED IN THE OFFICES OF
 GOLDEN WEST ENGINEERING, INC.
 8050 E. FLORENCE AVE., DOWNEY, CALIFORNIA, PH. 849-2004

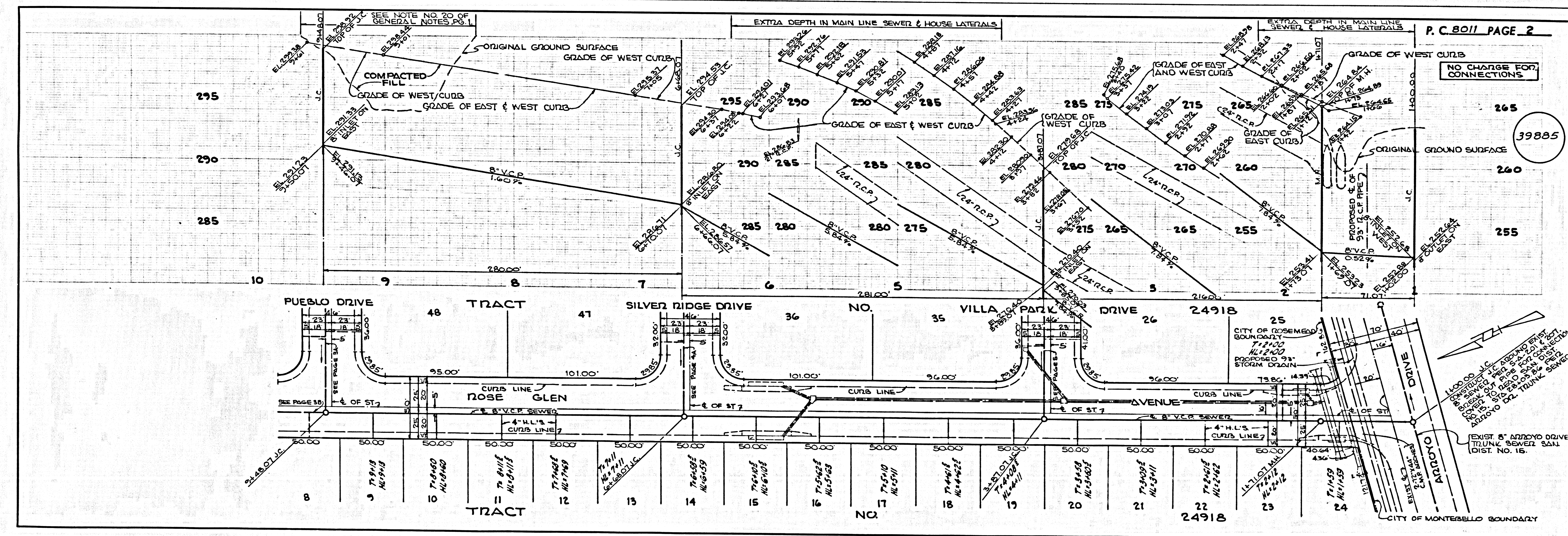
APPROVED BY: *R. J. Anderson*
 REG. C. E. NO. 13554

FOR LEGEND SEE PLAN NO. 5-1

NOTES:
 GRADES TO WHICH THIS IMPROVEMENT IS TO BE CONSTRUCTED ARE SHOWN ON PLANS AND PROFILES. GRADE POINTS FOR TOP OF CURBS, CENTER LINE OF STREETS, OR CENTER LINE OF ALLEYS ARE SHOWN BY CIRCLES ON PROFILES. AT ALL POINTS BETWEEN DESIGNATED POINTS THE GRADE SHALL BE ESTABLISHED SO AS TO CONFORM TO A STRAIGHT LINE DRAWN BETWEEN SAID DESIGNATED POINTS. ELEVATIONS ARE IN FEET ABOVE U.S.C. & G.S. MEAN SEA LEVEL UNLESS OTHERWISE NOTED.
 THIS DRAWING AND THE DATA HEREON ARE HEREBY MADE A PART OF THE SPECIFICATIONS.
 WORK SHALL BE CONSTRUCTED ACCORDING TO THE SPECIFICATIONS.
 APPROVAL OF THIS PLAN BY THE CITY OF ROSEMEAD DOES NOT CONSTITUTE AN APPROBATION AS TO THE ACCURACY OF THE LOCATION OR OF THE EXISTENCE OR NON-EXISTENCE OF ANY UNDERGROUND UTILITY PIPE, OR STRUCTURE WITHIN THE LIMITS OF THE PROJECT. THE NOTE APPLIES TO ALL PAGES.
 IF WORK IS TO BE DONE IN A STATE HIGHWAY, A PERMIT MUST BE OBTAINED FROM THE STATE OF CALIFORNIA, DIVISION OF HIGHWAYS, 1400 SOUTH BRIDGE STREET, LOS ANGELES, CALIFORNIA.

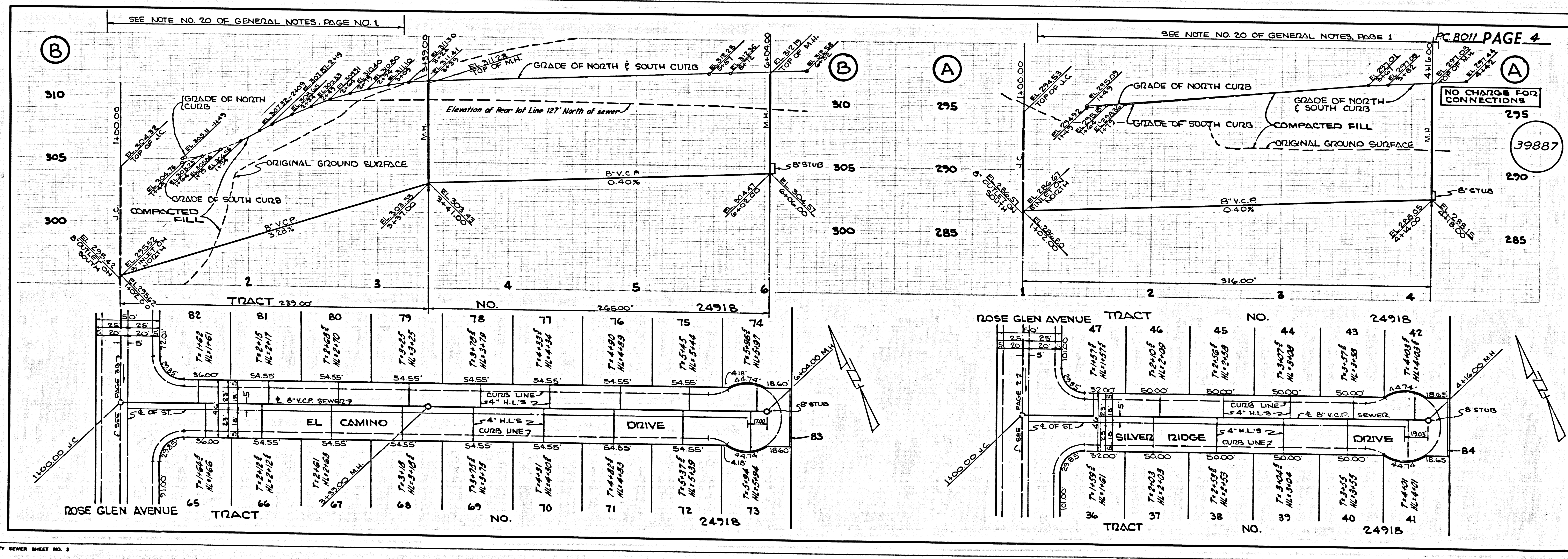
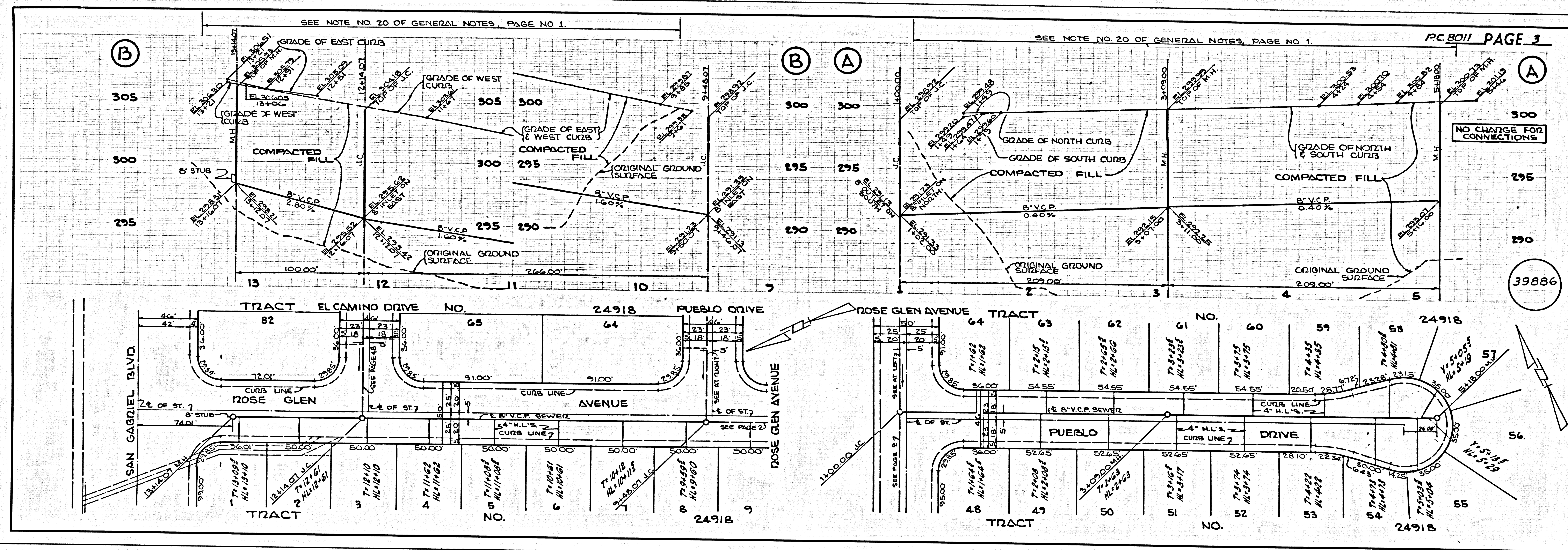
CITY OF ROSEMEAD, CALIFORNIA
 JOHN A. LAMBIE, CITY ENGINEER J. D. PARKHURST, CHIEF ENGINEER
 CO. SAN. DIST. NO. 15
 APPROVED BY: *John A. Lambie* 2-27-68 APPROVED BY: *J. D. Parkhurst*
 REGIONAL ENGINEER OFFICE ENGINEER

CHECKED BY: *John A. Lambie* 2-27-68 APPROVED BY: *John A. Lambie*
 REG. C. E. NO. 13554 CITY ENGINEER, CITY OF MONTEBELLO
 2-26-68

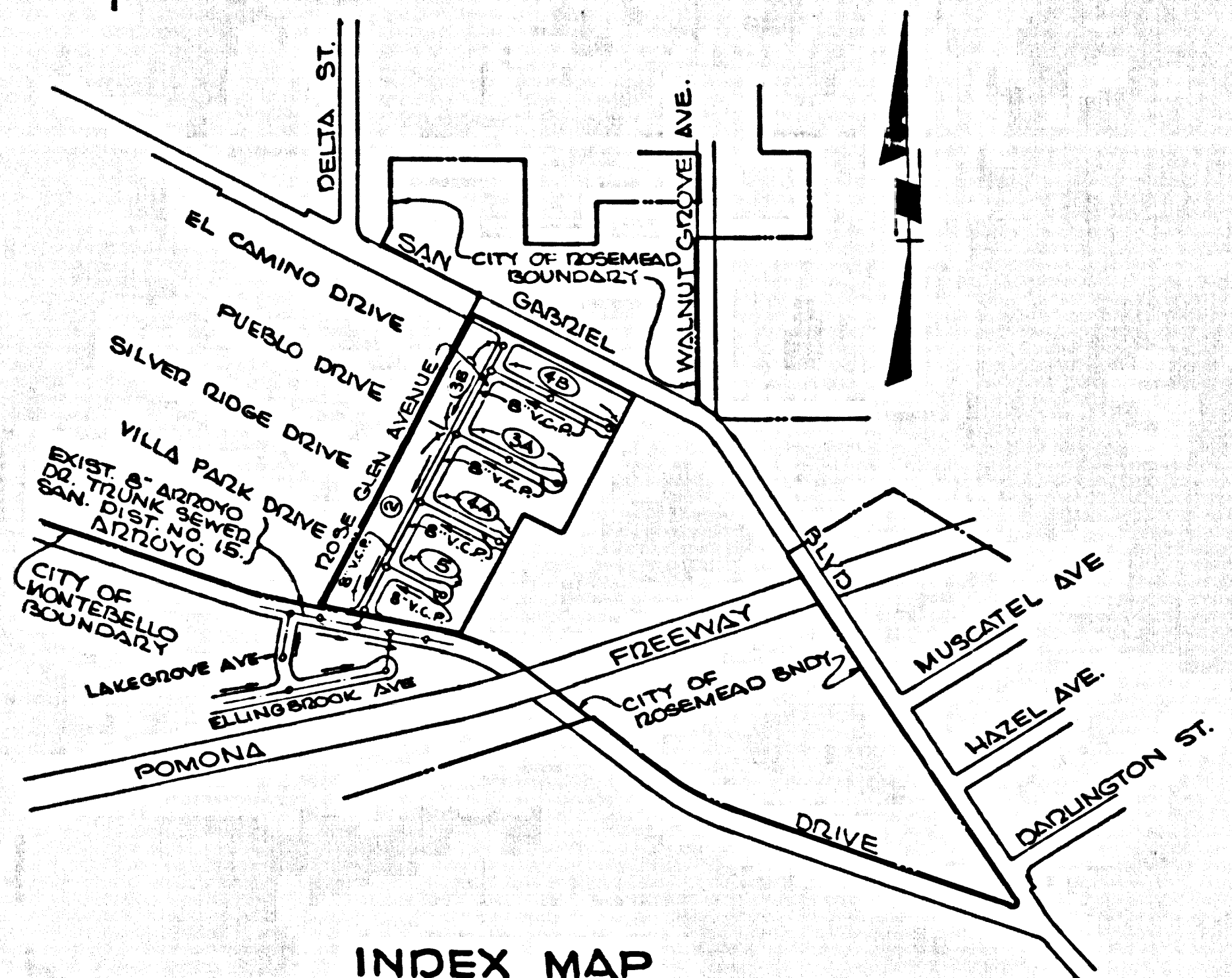


NO CHARGE FOR CONNECTIONS

39885



B.M. BY 3321 ELEV. 315.730
 C.S. MON. AT CENTERLINE
 INTERSECTION OF DELTA STREET
 AND SAN GABRIEL BLVD.
 BASELINE (OVER) QUAD. 1945



INDEX MAP
 SCALE: 1" = 600'
 TRACT NO. 24918
 P.C. 8011

ALL JOINTS BETWEEN CAST IRON PIPE AND VITRIFIED CLAY PIPE SHALL BE MADE WITH A RUBBER SLEEVE JOINT, TYPE "C" OR "B", (WITH BUSHING IF NECESSARY) PER STANDARD SPECIFICATIONS, SECTION 800-2.

THE FOLLOWING CITY ENGINEER STANDARD PLANS APPLY TO THIS PROJECT:

LEADERS	S-1
MINIMUM EXCAVATION SAFETY REQUIREMENTS	S-2
BRICK MANHOLE	S-3
NON REINFORCED PRECAST CONCRETE MANHOLE	S-4
REINFORCED PRECAST CONCRETE MANHOLE	S-5
MANHOLE FRAME AND COVER	S-6
MANHOLE STEP	S-7
SEAMING FOR SEWER PIPE	S-8
BRICKLIME AND ENCASUREMENT	S-9
WYE ON THE SUPPORT	S-10
ALLOWABLE TRENCH WIDTHS	S-11

County Sanitation Districts shall be notified prior to the following so that required inspection can be made (Phone: 337-1025)

- (1) Commencement of construction of manhole on District trunk sewer.
- (2) Breaking into existing manhole on District trunk sewer.
- (3) Core drilling District trunk sewer.
- (4) Construction of house connections to District trunk sewer.
- (5) Acceptance of the project.

NO CONNECTIONS FOR THE DISPOSAL OF INDUSTRIAL WASTES SHALL BE MADE TO SEWERS SHOWN ON THESE DRAWINGS WITHOUT WRITTEN PERMISSION FROM THE CHIEF ENGINEER AND GENERAL MANAGER OF THE COUNTY SANITATION DISTRICTS.

NOTE: CONTRACTOR MUST OBTAIN A PERMIT TO EXCAVATE IN CITY STREETS FROM THE CITY OF MONTEREJELLO

ROSEMEAD BLDG. DIST. NO. 507

- NOTES:
1. PROVIDE STAKES ON THE PROPERTY LINE OR PROPERTY LINES PRODUCED AT RIGHT ANGLES TO THE SEWER LINE AT THE CENTER LINE OF EACH MANHOLE.
 2. NO REPRESENTATIVE OF THE CITY ENGINEER WILL SURVEY OR LAY OUT ANY PORTION OF THE WORK.
 3. THE PRIVATE ENGINEER SHALL FURNISH THE COUNTY ENGINEER WITH GRADY SHEETS AND STATIONING FOR ALL HOUSE LATERALS AND "Y" OR "T" BRANCHES AND SHALL PROVIDE STAKES FOR THEM AT THEIR PROPER LOCATIONS WITH STATIONING PLAINLY MARKED. ALL HOUSE LATERALS SHALL BE CONSTRUCTED IN A STRAIGHT ALIGNMENT AT RIGHT ANGLES FROM THE MAIN LINE SEWER EXCEPT AS SHOWN ON THE PLANS. HOUSE LATERALS FROM CHIMNEYS SHALL NOT HAVE AN ANGLE OF LESS THAN 45° WITH THE MAIN LINE SEWER. ANY CHANGE IN ALIGNMENT SHALL BE REQUESTED IN WRITING BY THE PRIVATE ENGINEER.
 4. THE PRIVATE ENGINEER SHALL FURNISH THE HOUSE LATERAL DEPTH AT THE PROPERTY LINE BELOW THE TOP OF CURB ELEVATION FOR EACH HOUSE LATERAL ON THE GRADE SHEET.
 5. NO DITCHING SHALL BE MADE IN THESE PLANS WITHOUT THE APPROVAL OF THE CITY ENGINEER.
 6. THE CONTRACTOR SHALL NOTIFY THE CONSTRUCTION DIVISION BY TELEPHONE, MARSHMAN 2-4747, EXT. 81261, AT LEAST TWENTY-FOUR HOURS BEFORE STARTING ANY WORK UNDER THIS CONTRACT.
 7. ALL STRUCTURES SHALL BE EITHER BRICK, MANHOLES PER S-3 OR PRECAST CONCRETE MANHOLES PER S-4 OR S-5, EXCEPT AS NOTED.
 8. USE STANDARD MANHOLE FRAMES AND COVERS, S-11, EXCEPT AS NOTED.
 9. MANHOLE TOPS IN UNIMPROVED RIGHTS-OF-WAY TO BE SIX INCHES ABOVE FINISHED GRADE.
 10. VITRIFIED CLAY PIPE JOINTS SHALL BE TYPE "C" OR "B" PER STANDARD SPECIFICATIONS SECTION 800-2.
 11. USE EXTRA STRENGTH PIPE, ALL PIPE IS STANDARD DEPTH EXCEPT AS NOTED.
 12. IF A POWER POLE IS WITHIN THREE FEET OF THE SEWER, THE SEWER SHALL BE ENCASED, PER S-23, TWO FEET ON EACH SIDE FROM THE POINT OF INTERFERENCE.
 13. IF DURING THE COURSE OF CONSTRUCTION IT IS DETERMINED THAT THERE IS LESS THAN FOUR FEET OF COVER OVER THE TOP OF A MAIN LINE OR HOUSE LATERAL V.C.P. SEWER WHICH IS NOT INDICATED ON THE PLANS, THE PIPE SHALL BE ENCASED PER S-23, UNLESS OTHERWISE APPROVED BY THE CITY ENGINEER.
 14. HOUSE LATERALS TO BE CONSTRUCTED WITH INVERTS AT PROPERTY LINE 4 FEET BELOW CURB GRADE EXCEPT AS NOTED.
 15. RESURFACE ALL TRENCHES WITHIN PAVED AREAS TO MEET L.A. COUNTY ROAD DEPT. OR CALIFORNIA STATE HIGHWAY REQUIREMENTS IN ACCORDANCE WITH PERMITS.
 16. CURBWAYS TO BE TESTED FOR LEAKAGE PER SECTION 806-2.3.7 STD. SPECIFICATIONS.
 17. ALL STATE AND LOCAL TRENCH SAFETY ORDERS WILL BE STRICTLY ENFORCED. SPECIAL PROVISIONS.
 18. OTHER BRANCHES MAY BE USED INSTEAD OF "Y" OR "T" BRANCHES IN ALL LOCATIONS EXCEPT AS NOTED.
 19. SEWER PIPE CONNECTIONS SHALL CONFORM TO S-21.
 20. HOUSE LATERALS IN DESIGNATED AREAS:
 - (a) BACKFILL TRENCH AND REPLACE OTHER EARTH REMOVED SO AS TO ACHIEVE THE NATURAL OR FINISHED GRADES AND SLOPES SHOWN ON THE GRADING PLAN APPROVED FOR THIS TRACT BY THE BUILDING AND SAFETY DIVISION.
 - (b) ALL BACKFILL AND EARTH REPLACED SHALL BE COMPACTED TO A MINIMUM OF 90% OF MAXIMUM DENSITY PER A S.T.M. STANDARD METHOD ON TEST "COMB-TEST" AS MODIFIED. ACCEPTABLE CERTIFICATION OF SUCH COMPACTION SHALL BE SUBMITTED TO THE CONSTRUCTION DIVISION.

NOTICE TO CONTRACTOR

The existence and location of any underground utility lines or structures shown on these plans are obtained by a search of the available records. To the best of my knowledge and belief no other utilities except as shown on these plans. The contractor is required to take all precautionary measures to protect the utility lines shown and any other lines not of record not shown on these plans.

R. J. Anderson
 REG. C.E. NO. 13054

COLLECT CHARGES AS INDICATED

PROFILE, ALIGNMENT AND GRADE OF
 SANITARY SEWERS
 TO BE CONSTRUCTED IN

TRACT NO. 24918
 PRIVATE CONTRACT NO. 8011

W.S. 36, D-2
 3 SHEETS, 5 PAGES

SCALE: HORIZ. 1" = 40' VERT. 1" = 4'

PREPARED IN THE OFFICE OF
 GOLDEN WEST ENGINEERING, INC.
 8050 E. FLORENCE AVE., DOWNEY, CALIFORNIA, PH. 867-2004

APPROVED BY: *R. J. Anderson*
 REG. C.E. NO. 13054

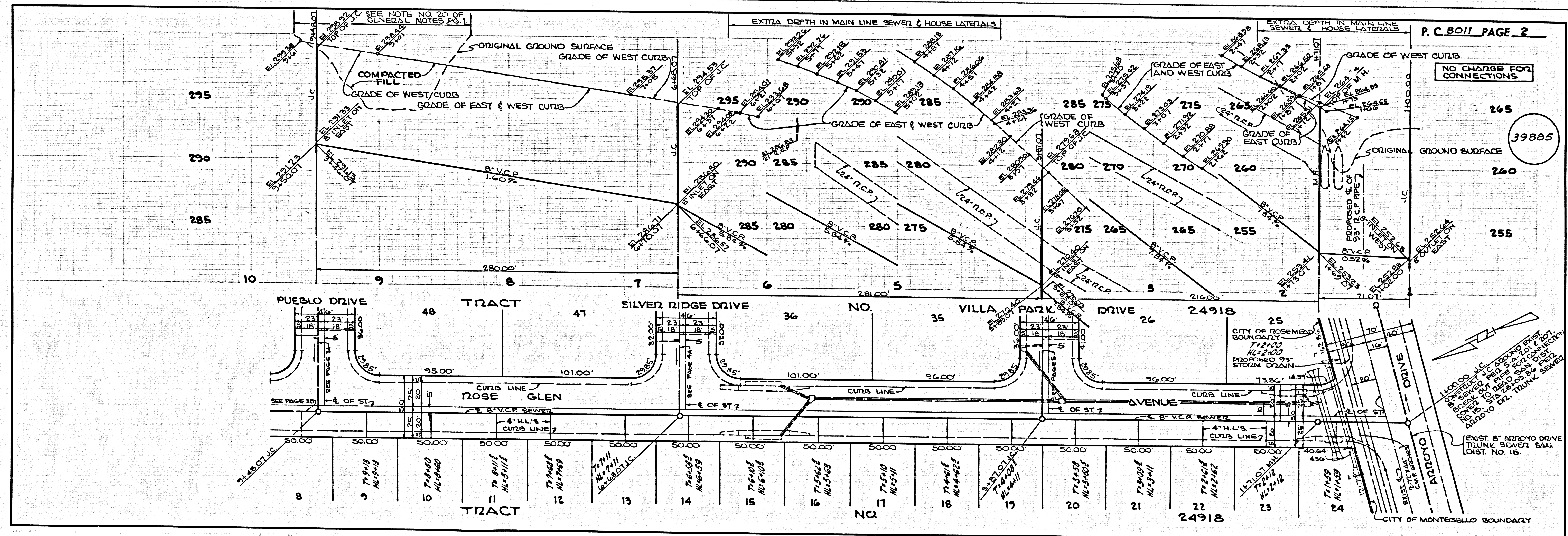
FOR LEGEND SEE PLAN NO. S-1

NOTES:
 GRADES TO WHICH THIS IMPROVEMENT IS TO BE CONSTRUCTED ARE SHOWN ON PLANS AND PROFILE. GRADE POINTS FOR TOP OF CURBS, CENTER LINE OF STREETS, OR CENTER LINE OF ALLEYS ARE SHOWN BY CIRCLES ON PROFILE. AT ALL POINTS BETWEEN DESIGNATED ELEVATIONS ARE IN FEET ABOVE U.S.C. & G.S. MEAN SEA LEVEL DATUM OF 1929.
 THIS DRAWING AND THE DATA HEREON ARE HEREBY MADE A PART OF THE SPECIFICATIONS.
 WORK SHALL BE CONSTRUCTED ACCORDING TO THE SPECIFICATIONS.
 APPROVAL OF THIS PLAN BY THE CITY OF ROSEMEAD DOES NOT CONSTITUTE A REPRESENTATION AS TO THE ACCURACY OF THE LOCATION OF OR THE EXISTENCE OR NON-EXISTENCE OF ANY UNDERGROUND UTILITY LINES OR STRUCTURES WITHIN THE LIMITS OF THE PROJECT. THE CONTRACTOR SHALL BE RESPONSIBLE FOR OBTAINING A PERMIT FROM THE CITY OF ROSEMEAD TO COVER THE COST OF CONSTRUCTION INSPECTION AND RECORD PLANS.
 APPROVAL OF THIS PLAN BY THE CITY OF ROSEMEAD DOES NOT CONSTITUTE A REPRESENTATION AS TO THE ACCURACY OF THE LOCATION OF OR THE EXISTENCE OR NON-EXISTENCE OF ANY UNDERGROUND UTILITY LINES OR STRUCTURES WITHIN THE LIMITS OF THE PROJECT. THE CONTRACTOR SHALL BE RESPONSIBLE FOR OBTAINING A PERMIT FROM THE CITY OF ROSEMEAD TO COVER THE COST OF CONSTRUCTION INSPECTION AND RECORD PLANS.
 IF WORK IS TO BE DONE IN A STATE HIGHWAY, A PERMIT MUST BE OBTAINED FROM THE STATE OF CALIFORNIA, DIVISION OF HIGHWAYS, 120 SOUTH SPRING STREET, LOS ANGELES, CALIFORNIA.

CITY OF ROSEMEAD, CALIFORNIA
 JOHN A. LAMBIE, CITY ENGINEER
 APPROVED BY: *John A. Lambie*
 REGIONAL ENGINEER

J. D. PARKHURST, CHIEF ENGINEER
 CO. SAN. DIST. NO. 15
 APPROVED BY: *J. D. Parkhurst*
 OFFICE ENGINEER

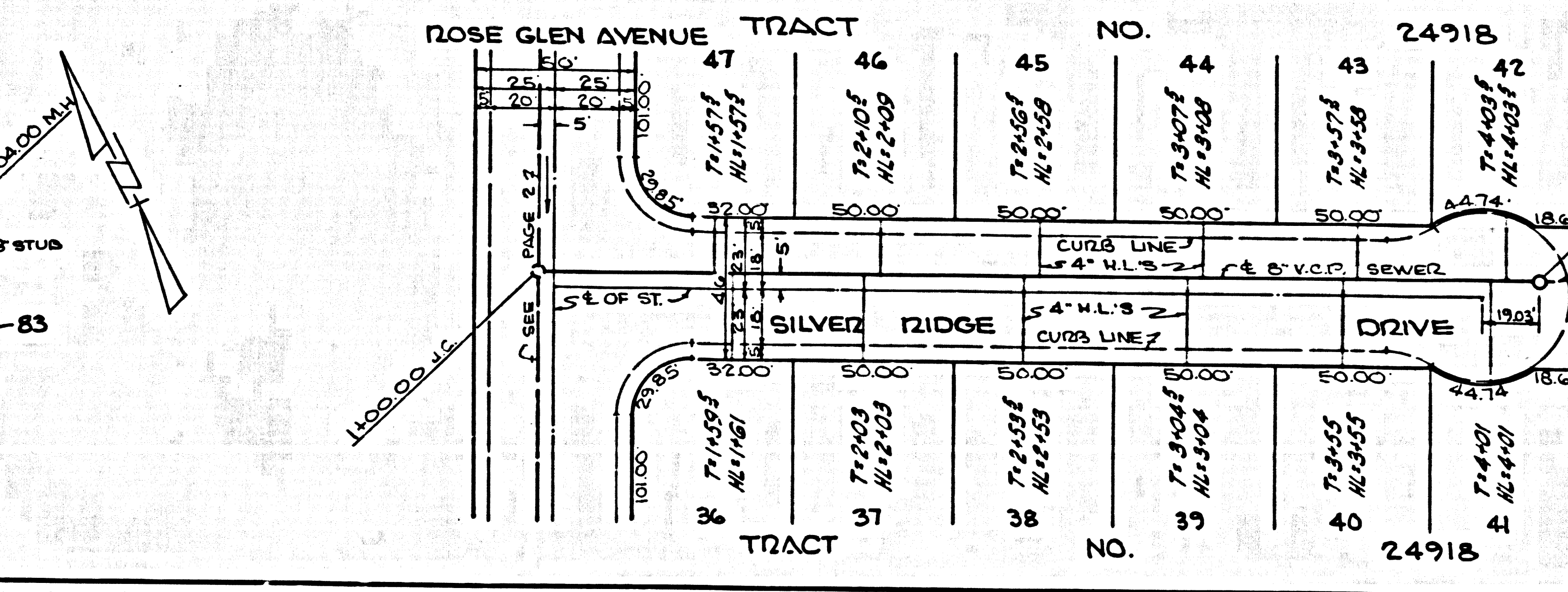
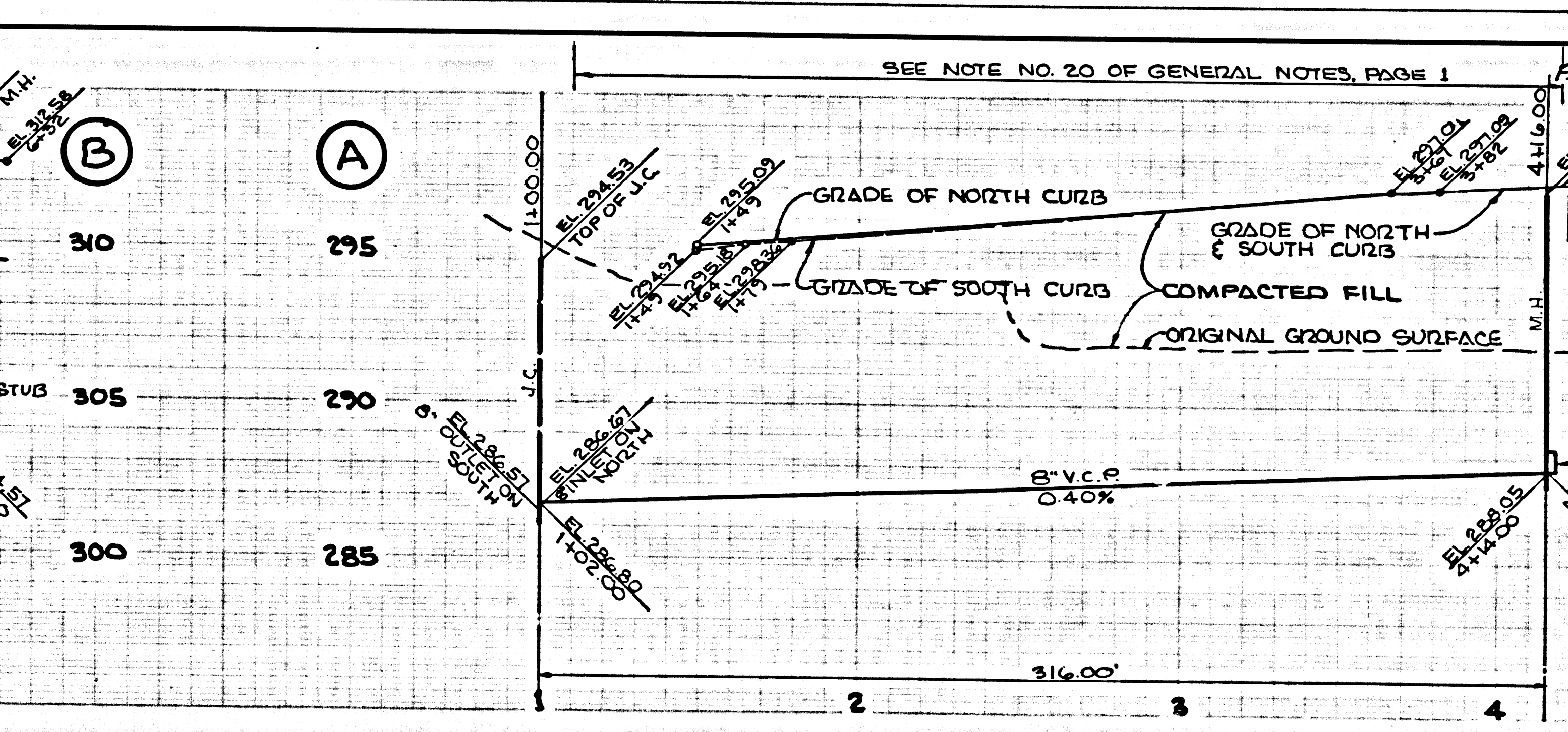
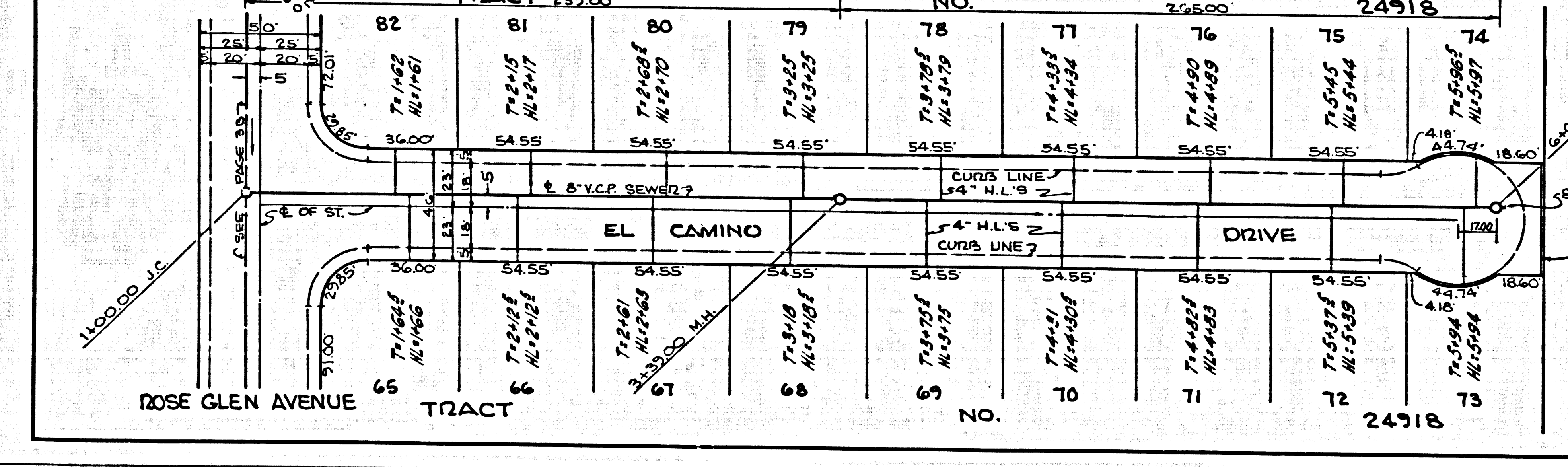
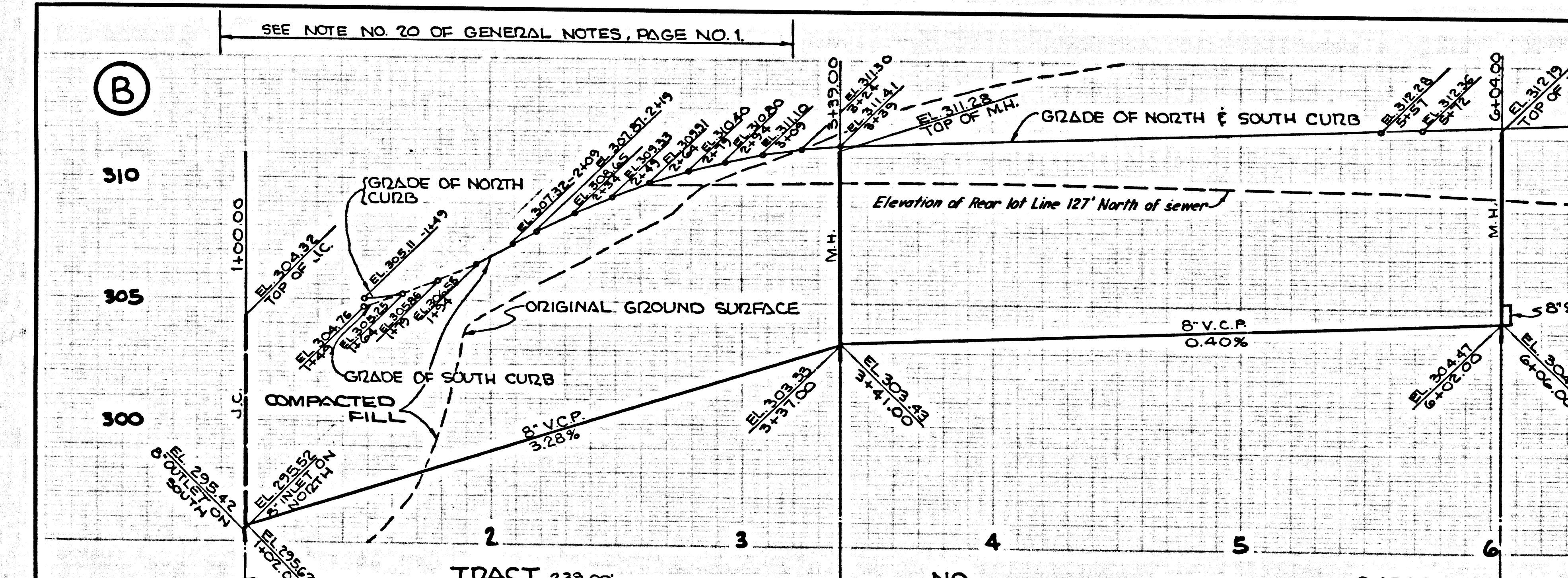
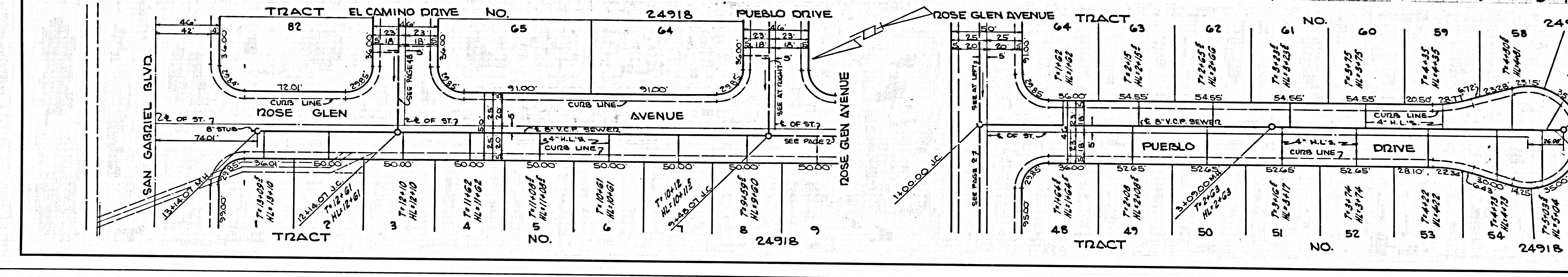
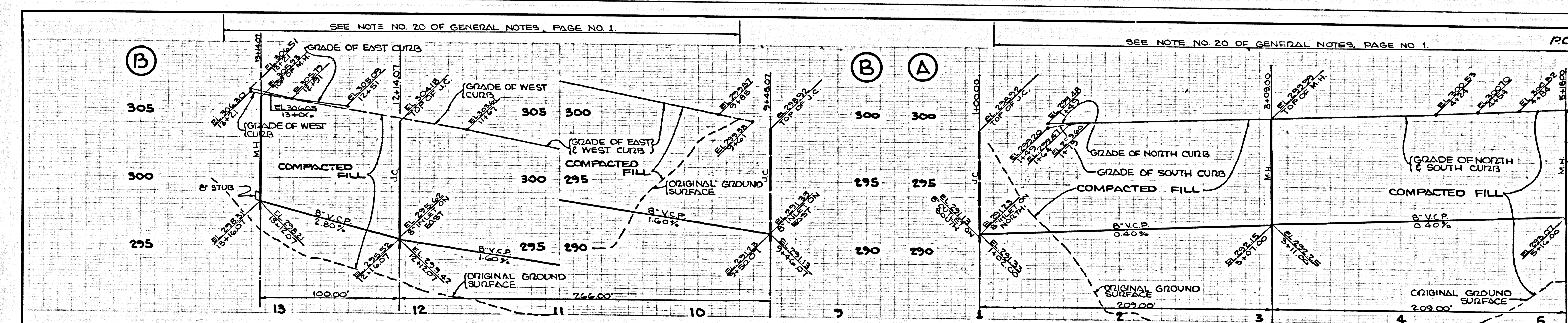
CHECKED BY: *John A. Lambie*
 REG. C.E. NO. 7882
 2-27-68



P.C. 8011 PAGE 2

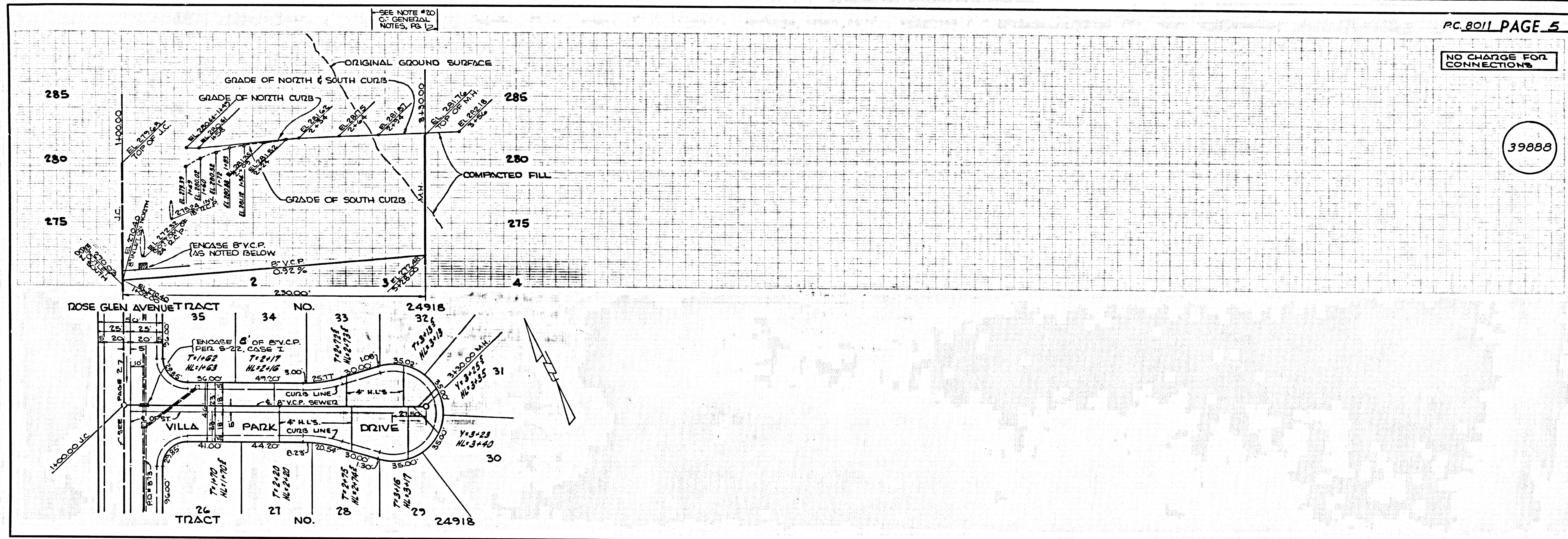
NO CHARGE FOR CONNECTIONS

39885



NO CHARGE FOR CONNECTIONS

39888



L.A. COUNTY SEWER SHEET NO. 2