

B.M. 51. 642 ELEV. 1262.071  
 Road Dept. B.M. Tag No. Side Conc. base  
 of NE Cor. Edison High Tension Tower  
 at 313 W 31st St. E. Lyons Avenue  
 at 30 E. Wiley Canyon Road  
 NEWHALL QUAD. 19 58

End of Sewer Per  
 P.C. 28560

County Sanitation Districts shall be notified prior to the following so that required inspection can be made (Phone 337-1025)

- (1) Commencement of construction of manhole on District trunk sewer.
- (2) Breaking into existing manhole on District trunk sewer.
- (3) Core drilling District trunk sewer.
- (4) Construction of house connections to District trunk sewer.
- (5) Acceptance of the project.

DOUBLE SCALE  
 NEWHALL BLDG. DIST. NO. 82

PROFILE, ALIGNMENT AND GRADE OF  
 SANITARY SEWERS PAGE 1

CONSTRUCTED IN  
 TRACT NO. 28560

PRIVATE CONTRACT NO. 8012

W.S. 62-A-3

3 SHEETS, 5 PAGES

SCALE: HORIZ. 1"=80' VERT. 1"=4'

JAN., 1968

PREPARED BY THE OFFICE OF  
 VOORHEES-TRIMBLE CO.

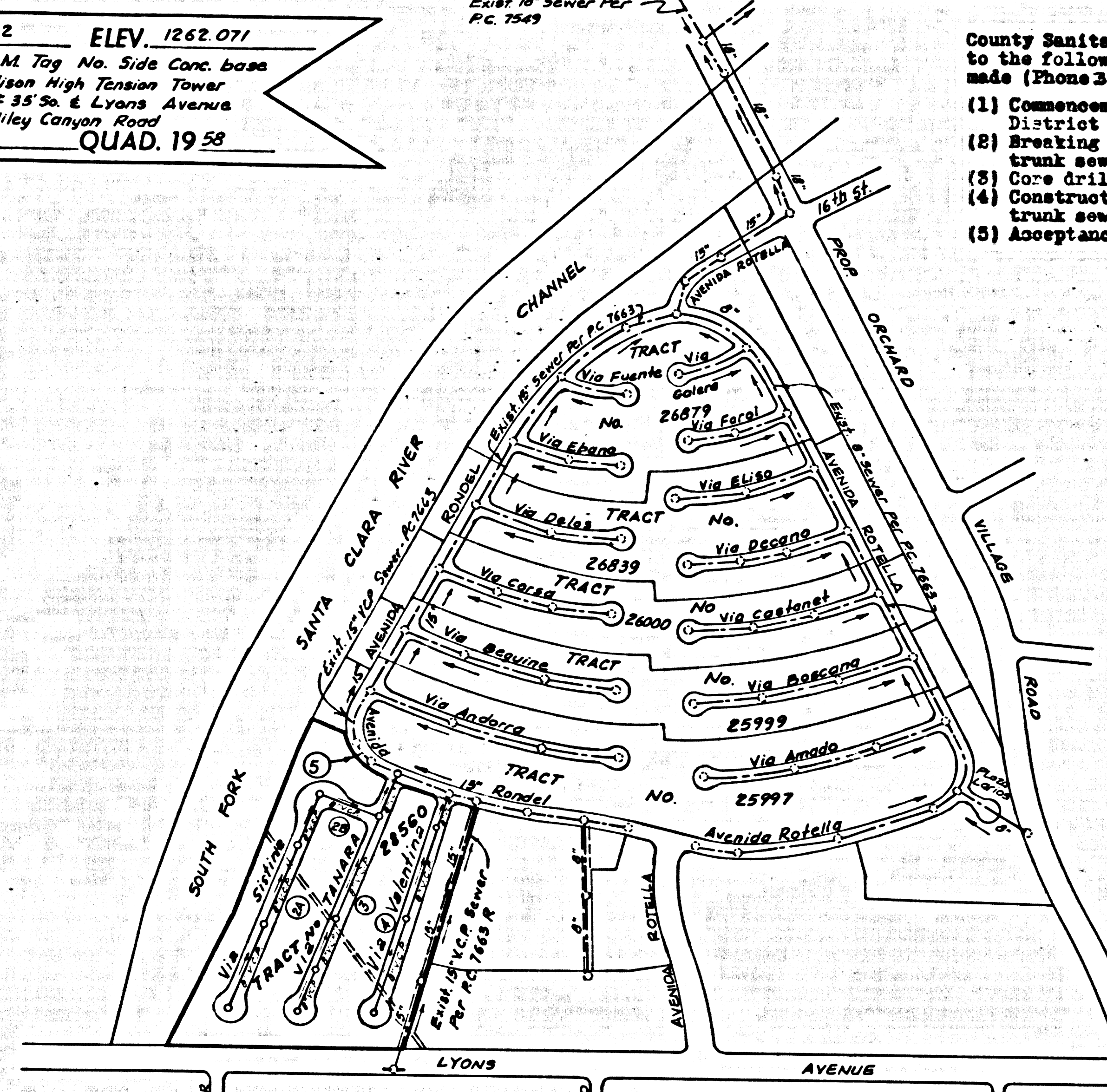
3719 VAN NUYS BLVD. VAN NUYS, CALIFORNIA

By: *Michael P. Madala*

REG. C.E. NO. 16768

FOR LEGEND SEE PLAN NO. S-1

39796



INDEX MAP  
 TRACT 28560  
 Scale 1"=400'  
 Number in Circles  
 indicates Page Numbers

COLLECT CHARGES  
 AS INDICATED

*Harold W. Koenig 4/20/68*

NO CONNECTIONS FOR THE DISPOSAL OF INDUSTRIAL WASTES SHALL BE MADE TO SEWERS SHOWN ON THESE DRAWINGS WITHOUT WRITTEN PERMISSION FROM THE CHIEF ENGINEER AND GENERAL MANAGER OF THE COUNTY SANITATION DISTRICTS.

- NOTES
1. PROVIDE STAKES ON THE PROPERTY LINE OR PROPERTY LINES PRODUCED AT RIGHT ANGLES TO THE SEWER LINE AT THE CENTER LINE OF EACH MANHOLE.
  2. NO REPRESENTATIVE OF THE COUNTY ENGINEER WILL SURVEY OR LAY OUT ANY PORTION OF THE WORK.
  3. THE PRIVATE ENGINEER SHALL FURNISH THE COUNTY ENGINEER WITH GRADE SHEETS AND STATIONING FOR ALL HOUSE LATERALS "T" AND "Y" BRANCHES AND SHALL PROVIDE STAKES FOR THEM AT THEIR PROPOSED LOCATIONS WITH STATIONING PLAINLY MARKED. ALL HOUSE LATERALS SHALL BE CONSTRUCTED IN A STRAIGHT ALIGNMENT AT RIGHT ANGLES FROM THE MAIN LINE SEWER EXCEPT AS SHOWN ON THE PLANS. HOUSE-BRANCH-TO-MAIN-SEWER SHALL BE MADE UP OF 90° BENDS WITH THE MAIN LINE SEWER. ANY CHANGE IN ALIGNMENT SHALL BE REQUESTED BY WRITING BY THE PRIVATE ENGINEER.
  4. THE PRIVATE ENGINEER SHALL FURNISH THE HOUSE LATERAL DEPTH AT THE PROPERTY LINE BELOW THE TOP OF CURB ELEVATION FOR EACH HOUSE LATERAL ON THE GRADE SHEET.
  5. NO REVISIONS SHALL BE MADE IN THESE PLANS WITHOUT THE APPROVAL OF THE COUNTY ENGINEER.
  6. THE CONTRACTOR SHALL NOTIFY THE CONSTRUCTION DIVISION BY TELEPHONE, MONDAY 9:00 AM, EST. 8:00 AM, AT LEAST TWENTY-FOUR HOURS BEFORE STARTING ANY WORK UNDER THIS CONTRACT.
  7. MANHOLES SHALL BE BRICK SEWER STRUCTURES PER S-2, RECAST CONCRETE MANHOLES PER S-3 OR S-4 EXCEPT AS NOTED.
  8. "T" OR "Y" BRANCHES MAY BE USED FOR CONNECTION TO MAIN LINE SEWERS, EXCEPT AS NOTED.
  9. MANHOLE TOPS ON UNIMPROVED HIGHWAYS OR TO BE ON UNIMPROVED HIGHWAYS SHALL BE AS NOTED.
  10. USE EXTRA STRENGTH PIPE. ALL PIPE IS STANDARD DEPTH EXCEPT AS NOTED.
  11. VITRIFIED CLAY PIPE JOINTS SHALL BE TYPE "D", "E" OR "F" PER STD. SPEC. SEC. 808-2.
  12. IF A POWER POLE IS WITHIN THREE FEET OF THE SEWER, THE SEWER SHALL BE ENCASED, PER S-23, TWO FEET ON EACH SIDE FROM THE POINT OF INTERFERENCE.
  13. IF DURING THE COURSE OF CONSTRUCTION IT IS DETERMINED THAT THERE IS LESS THAN FOUR FEET OF COVER OVER THE TOP OF A MAIN LINE OR HOUSE LATERAL V.C.P. SEWER WHICH IS NOT INDICATED ON THE PLANS, THE PIPE SHALL BE ENCASED PER S-23, UNLESS OTHERWISE APPROVED BY THE COUNTY ENGINEER.
  14. HOUSE LATERALS TO BE CONSTRUCTED WITH INVERTS AT PROPERTY LINE 4 FEET BELOW CURB GRADE EXCEPT AS NOTED.
  15. RESURFACE ALL TRENCHES WITHIN PAVED AREAS TO MEET L.A. COUNTY ROAD DEPT. OR CALIFORNIA HIGHWAY DEPARTMENT REQUIREMENTS IN ACCORDANCE WITH PERMITS.
  16. SEWERS TO BE TESTED FOR LEAKAGE PER SEC. 306-23.7 OF STD. SPEC.
  17. ALL STATE AND LOCAL TRENCH SAFETY ORDERS WILL BE STRICTLY ENFORCED.
  18. ALL JOINTS BETWEEN CAST IRON PIPE AND VITRIFIED CLAY PIPE SHALL BE MADE WITH A NUMBER BLEND JOINT, TYPE "C" OR "D", (WITH GUMMING IF NECESSARY) PER STANDARD SPECIFICATIONS, SEC. 228-2.
  19. SEWER PIPE BEDDING SHALL CONFORM TO S-21.
- THE FOLLOWING COUNTY ENGINEER STD. PLANS APPLY TO THIS PROJECT:

LEGEND	S-1
MINIMUM EXCAVATION SAFETY REQUIREMENTS	S-2
BRICK MANHOLE	S-3
NON REINFORCED PRECAST CONCRETE MANHOLE	S-4
REINFORCED PRECAST CONCRETE MANHOLE	S-5
MANHOLE FRAME AND COVER	S-6
MANHOLE STEP	S-7
BEDDING FOR SEWER PIPE	S-8
CRADLING AND ENCASEMENT	S-9
WYE OR TEE SUPPORT	S-10
ALLOWABLE TRENCH WIDTHS	S-11
SPECIAL HOUSE LATERALS	S-22
SPECIAL SUPPORT AND PROTECTION	S-23

NOTICE TO CONTRACTOR

The existence and location of any underground utility pipes or structures shown on these plans are obtained by a search of the available records. To the best of my knowledge there are no existing utilities except as shown on these plans. The contractor is required to take due precautionary measures to protect the utility lines shown and any other lines not of record or not shown on these plans.

*Michael P. Madala*  
 R.C.E. NO. 16768

NOTE: GRADES TO WHICH THIS IMPROVEMENT IS TO BE CONSTRUCTED ARE SHOWN ON PLANS AND PROFILES. GRADE POINTS FOR TOP OF CURB, CENTER LINE OF STREETS, OR CENTER LINE OF ALLEYS ARE SHOWN BY CIRCLES ON PROFILES. AT ALL POINTS BETWEEN DESIGNATED POINTS THE GRADE SHALL BE ESTABLISHED SO AS TO CONFORM TO A STRAIGHT LINE DRAWN BETWEEN SAID DESIGNATED POINTS. ELEVATIONS ARE IN FEET ABOVE U.S.C. & G.S. MEAN SEA LEVEL DATUM OF 1929.

THIS DRAWING AND THE DATA HEREON ARE HEREBY MADE A PART OF THE SPECIFICATIONS.

COUNTY ENGINEER SPECIAL PRELIMINARY APPROVAL PER S-1, S-2, S-3, S-4, S-5, S-6, S-7, S-8, S-9, S-10, S-11, S-12, S-13, S-14, S-15, S-16, S-17, S-18, S-19, S-20, S-21, S-22, S-23, S-24, S-25, S-26, S-27, S-28, S-29, S-30, S-31, S-32, S-33, S-34, S-35, S-36, S-37, S-38, S-39, S-40, S-41, S-42, S-43, S-44, S-45, S-46, S-47, S-48, S-49, S-50, S-51, S-52, S-53, S-54, S-55, S-56, S-57, S-58, S-59, S-60, S-61, S-62, S-63, S-64, S-65, S-66, S-67, S-68, S-69, S-70, S-71, S-72, S-73, S-74, S-75, S-76, S-77, S-78, S-79, S-80, S-81, S-82, S-83, S-84, S-85, S-86, S-87, S-88, S-89, S-90, S-91, S-92, S-93, S-94, S-95, S-96, S-97, S-98, S-99, S-100.

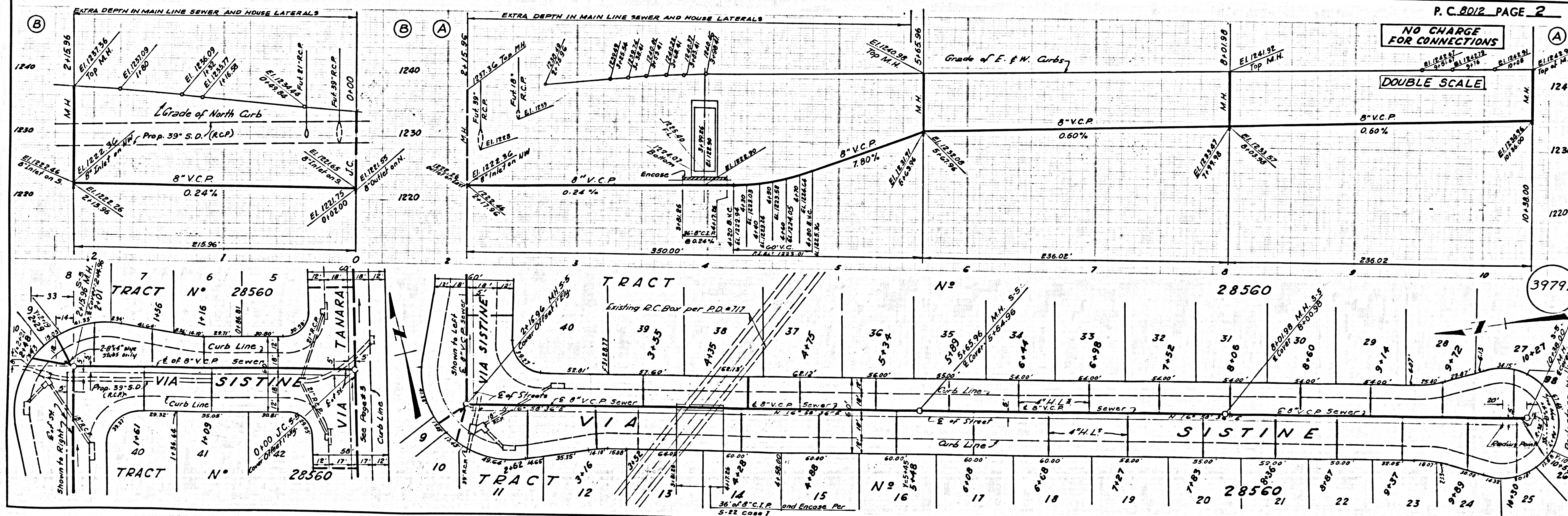
APPROVAL OF THE PLAN BY THE COUNTY OF LOS ANGELES DOES NOT CONSTITUTE A REPRESENTATION AS TO THE ACCURACY OF THE PROJECT. THIS NOTE APPLIES TO ALL PAGES.

IF WORK IS TO BE DONE IN A STATE HIGHWAY, A PERMIT MUST BE OBTAINED FROM THE STATE OF CALIFORNIA, DIVISION OF HIGHWAYS, 160 SOUTH SPRING STREET, LOS ANGELES, CALIFORNIA.

COUNTY OF LOS ANGELES, CALIFORNIA  
 JOHN A. LAMBE, COUNTY ENGINEER J. D. PARKHURST, CHIEF ENGINEER  
 CO. SAN. DIST. NO. 82  
 APPROVED BY: *Michael P. Madala* REGIONAL ENGINEER APPROVED BY: *J. D. Parkhurst* CHIEF ENGINEER

CHECKED BY: *Ralph A. Schep* 2/29/68  
 REG. C.E. NO. 15508

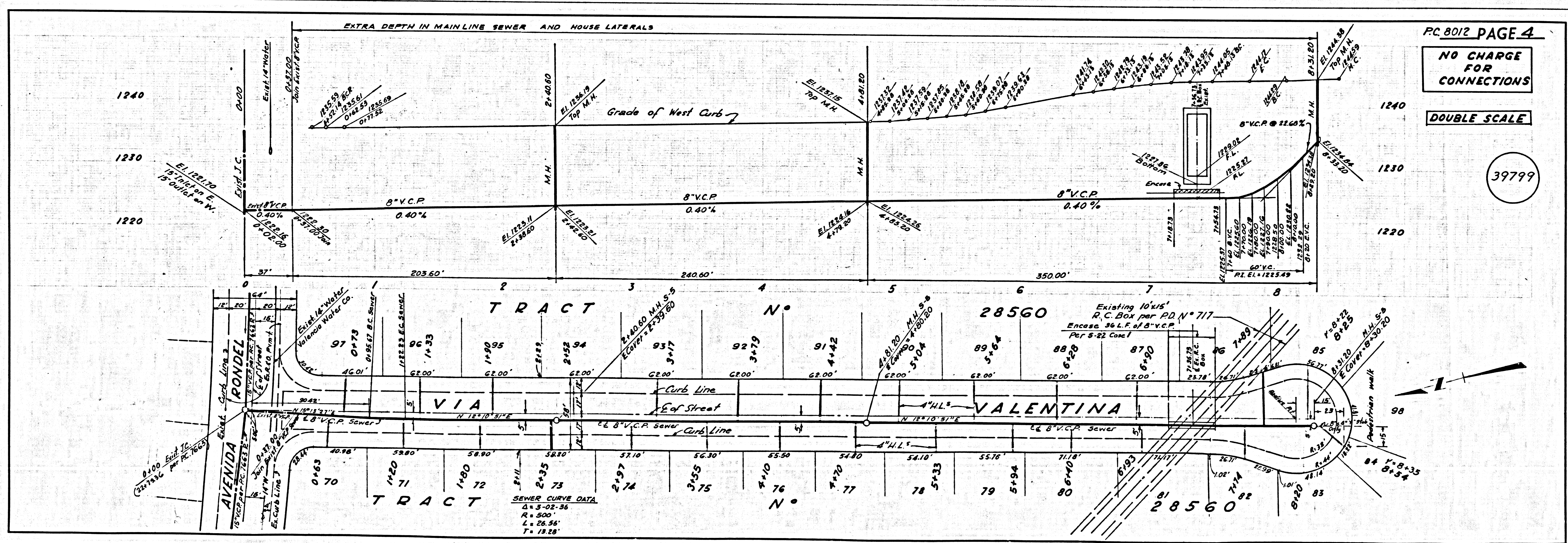
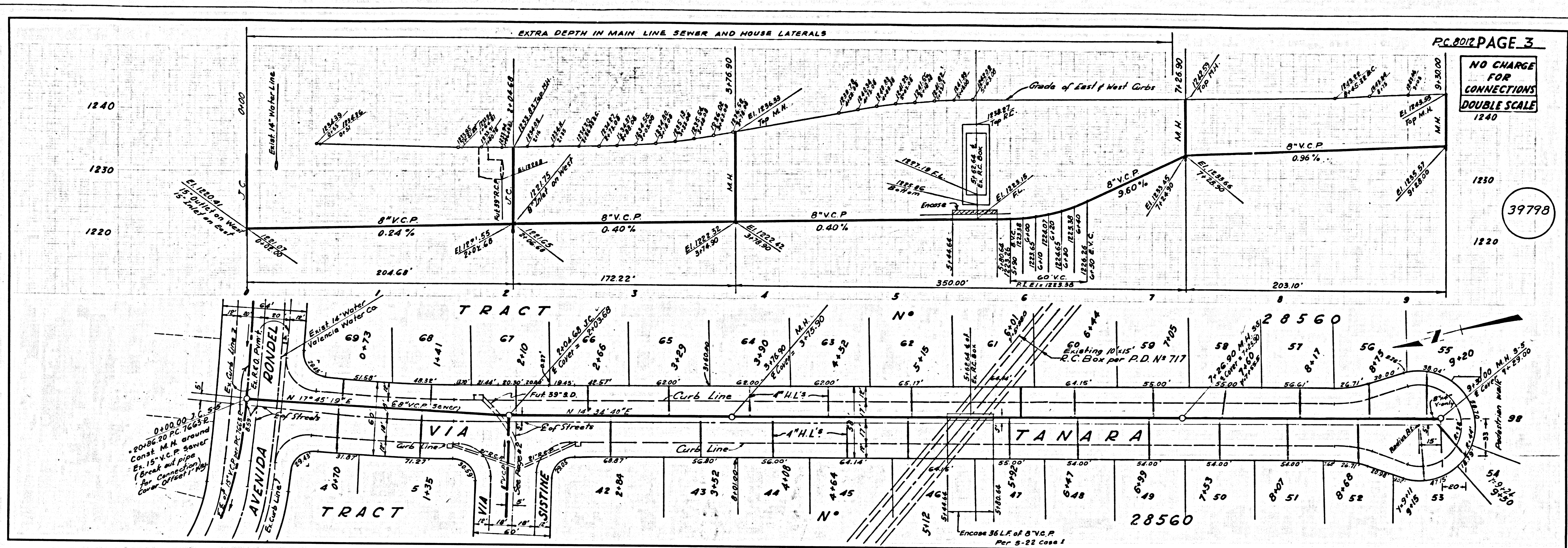
J.N. 025002



P.C. 8012 PAGE 2  
 NO CHARGE FOR CONNECTIONS

DOUBLE SCALE

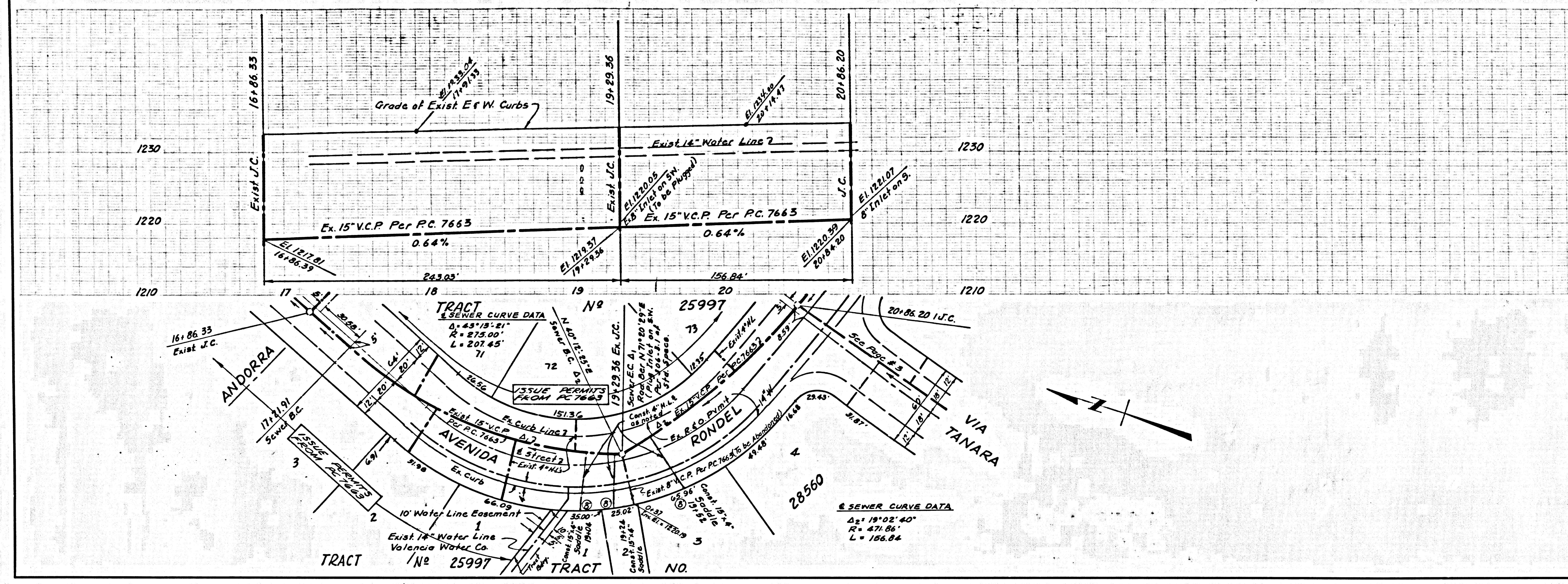
39797



NO CHARGE FOR CONNECTIONS

DOUBLE SCALE

39800



B.M. SL. 642 ELEV. 1262.071  
 Road Dept. B.M. 709 No. Side Conc. base  
 of NE Cor. Edison High Tension Tower  
 at N. 37° 13' 30" E. Lyons Avenue  
 and E. 30° E. Wiley Canyon Road  
 NEWHALL QUAD. 19 58

County Sanitation Districts shall be notified prior to the following so that required inspection can be made (Phone 337-1025)  
 (1) Commencement of construction of manhole on District trunk sewer.  
 (2) Breaking into existing manhole on District trunk sewer.  
 (3) Core drilling District trunk sewer.  
 (4) Construction of house connections to District trunk sewer.  
 (5) Acceptance of the project.

DOUBLE SCALE  
 NEWHALL BLDG. DIST. NO. 82

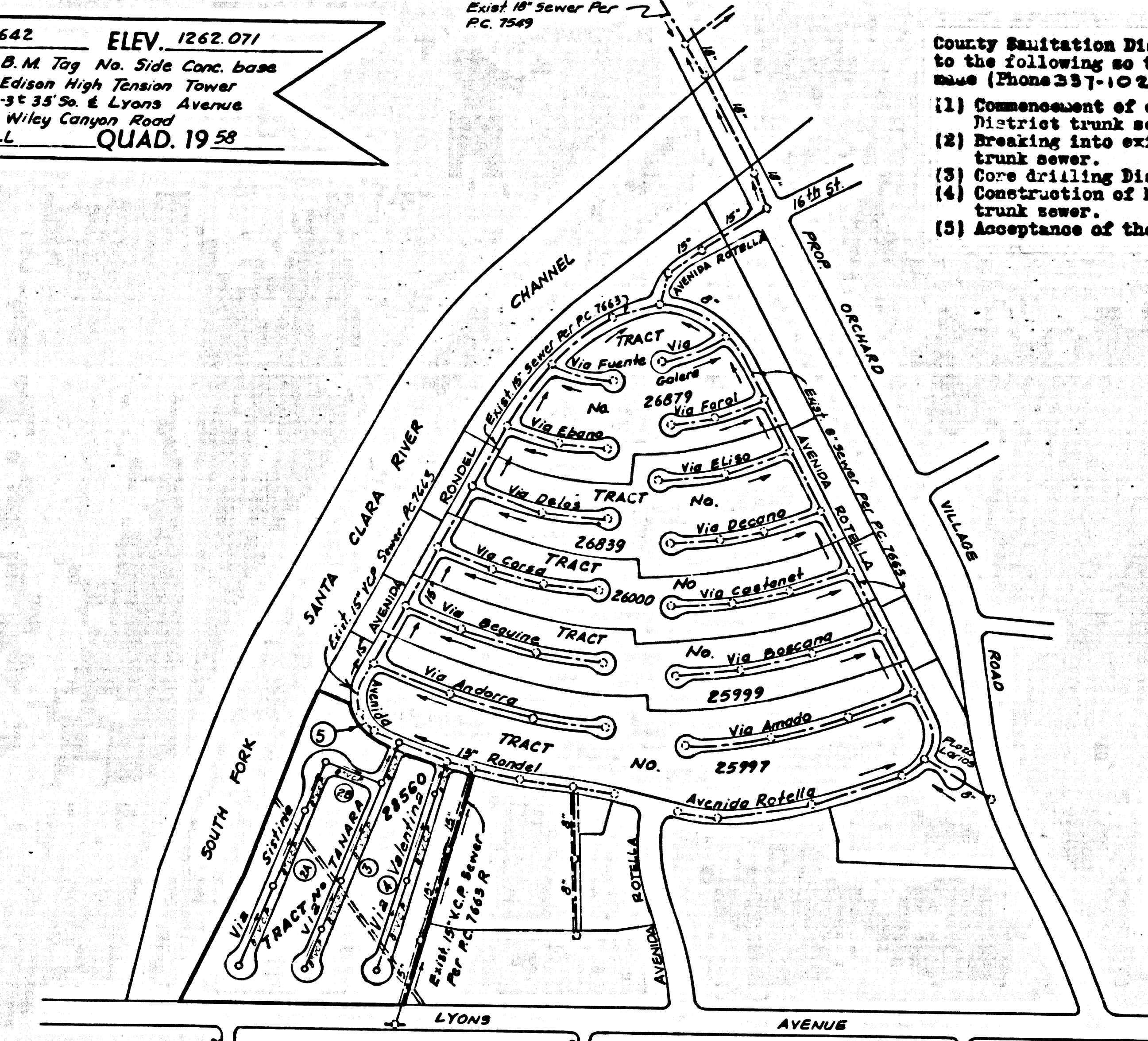
PROFILE, ALIGNMENT AND GRADE OF  
**SANITARY SEWERS** P.C. 8012  
 PAGE 1  
 CONSTRUCTED IN  
 TRACT NO. 28560

PRIVATE CONTRACT NO. 8012

W.S. 62-A-3  
 3 SHEETS, 5 PAGES  
 SCALE: VERT. 1"=8'  
 HORIZ. 1"=40'  
 JAN. 1968  
 PREPARED IN THE OFFICES OF  
**VOORHEIS-TRINCKLE CO.**  
 3919 VAN NUYS BLVD. VAN NUYS, CALIFORNIA  
 By *Michael R. Madala*  
 REG. C.E. NO. 16768

39796

FOR LEGEND SEE PLAN NO. S-1



INDEX MAP  
 TRACT 28560  
 P.C. 8012  
 Scale 1"=400'  
 Number in Circles  
 indicates Page Numbers

COLLECT CHARGES  
 AS INDICATED  
*David W. Kennedy 4/2/68*

NO CONNECTIONS FOR THE DISPOSAL OF INDUSTRIAL WASTES SHALL BE MADE TO SEWERS SHOWN ON THESE DRAWINGS WITHOUT WRITTEN PERMISSION FROM THE CHIEF ENGINEER AND GENERAL MANAGER OF THE COUNTY SANITATION DISTRICTS.

- NOTES
- PROVIDE STAKES ON THE PROPERTY LINE OR PROPERTY LINES PRODUCED AT RIGHT ANGLES TO THE SEWER LINE AT THE CENTER LINE OF EACH MANHOLE.
  - NO REPRESENTATIVE OF THE COUNTY ENGINEER WILL SURVEY OR LAY OUT ANY PORTION OF THE WORK.
  - THE PRIVATE ENGINEER SHALL FURNISH THE COUNTY ENGINEER WITH CLEAN SHEETS AND STATIONING FOR ALL HOUSE LATERALS "T" AND "Y" BRANCHES AND SHALL PROVIDE STAKES FOR THEM AT THEIR PROPER LOCATIONS WITH STATIONING PLAINLY MARKED. ALL HOUSE LATERALS SHALL BE CONSTRUCTED IN A STRAIGHT ALIGNMENT AT RIGHT ANGLES FROM THE MAIN LINE SEWER EXCEPT AS SHOWN ON THE PLANS. HOUSE-TO-HOUSE CONNECTIONS SHALL BE MADE OVER-HEAD OR UNDER-HEAD OF "Y" OR "T" BRANCH SEWER. ANY CHANGE IN ALIGNMENT SHALL BE REQUESTED BY WRITING BY THE PRIVATE ENGINEER.
  - THE PRIVATE ENGINEER SHALL FURNISH THE HOUSE LATERAL DEPTH AT THE PROPERTY LINE BELOW THE TOP OF CURB ELEVATION FOR EACH HOUSE LATERAL ON THE GRADE SHEET.
  - NO REVISIONS SHALL BE MADE IN THESE PLANS WITHOUT THE APPROVAL OF THE COUNTY ENGINEER.
  - THE CONTRACTOR SHALL NOTIFY THE CONSTRUCTION DIVISION BY TELEPHONE, HANDSON 9-070, EXT. 81581, AT LEAST TWENTY-FOUR HOURS BEFORE STARTING ANY WORK UNDER THIS CONTRACT.
  - MANHOLES SHALL BE BRICK SEWER STRUCTURES PER S-2, PRECAST CONCRETE MANHOLES PER S-3 OR S-4 AS NOTED.
  - "T" OR "Y" BRANCHES MAY BE USED FOR CONNECTION TO MAIN LINE SEWERS, EXCEPT AS NOTED.
  - MANHOLES SHALL BE CONSTRUCTED ACCORDING TO STANDARD SPECIFICATIONS FOR PUBLIC WORKS INDICATED IN THESE PLANS AND SHALL BE PROVIDED WITH 18" DIA. RINGS AND 18" DIA. COVERS. THE GRADE SHALL BE ESTABLISHED AS TO CONFORM TO A STRAIGHT LINE DRAWN BETWEEN SAID DISCREPANT POINTS. THIS DRAWING AND THE DATA HEREON ARE HEREBY MADE A PART OF THE SPECIFICATIONS.
  - WORK SHALL BE CONSTRUCTED ACCORDING TO STANDARD SPECIFICATIONS FOR PUBLIC WORKS INDICATED IN THESE PLANS AND SHALL BE PROVIDED WITH 18" DIA. RINGS AND 18" DIA. COVERS. THE GRADE SHALL BE ESTABLISHED AS TO CONFORM TO A STRAIGHT LINE DRAWN BETWEEN SAID DISCREPANT POINTS. THIS DRAWING AND THE DATA HEREON ARE HEREBY MADE A PART OF THE SPECIFICATIONS.
  - APPROVAL OF THIS PLAN BY THE COUNTY OF LOS ANGELES DOES NOT CONSTITUTE A REPRESENTATION AS TO THE ACCURACY OF THE LOCATION OF OR THE EXISTENCE OR NON-EXISTENCE OF ANY UNDERGROUND UTILITY PIPE, OR STRUCTURE WITHIN THE LIMITS OF THIS PROJECT. THIS NOTE APPLIES TO ALL UNDERGROUND UTILITY PIPE, OR STRUCTURE WITHIN THE LIMITS OF THIS PROJECT. IF WORK IS TO BE DONE IN A STATE HIGHWAY, A PERMIT MUST BE OBTAINED FROM THE STATE OF CALIFORNIA, DIVISION OF HIGHWAYS, 126 SOUTH BRIND STREET, LOS ANGELES, CALIFORNIA.
  - SEWERS TO BE TESTED FOR LEAKAGE PER SEC. 306-2.5.7 OF STA. SPEC.
  - ALL STATE AND LOCAL TRENCH SAFETY ORDERS WILL BE STRICTLY ENFORCED.
  - ALL JOINTS BETWEEN CAST IRON PIPE AND VITRIFIED CLAY PIPE SHALL BE MADE WITH A RUBBER SLING JOINT, TYPE "C" OR "D", (WITH GASKETING IF NECESSARY) PER STANDARD SPECIFICATIONS, SEC. 228-2.
  - SEWER PIPE BEDDING SHALL CONFORM TO S-21.
- THE FOLLOWING COUNTY ENGINEER STD. PLANS APPLY TO THIS PROJECT:

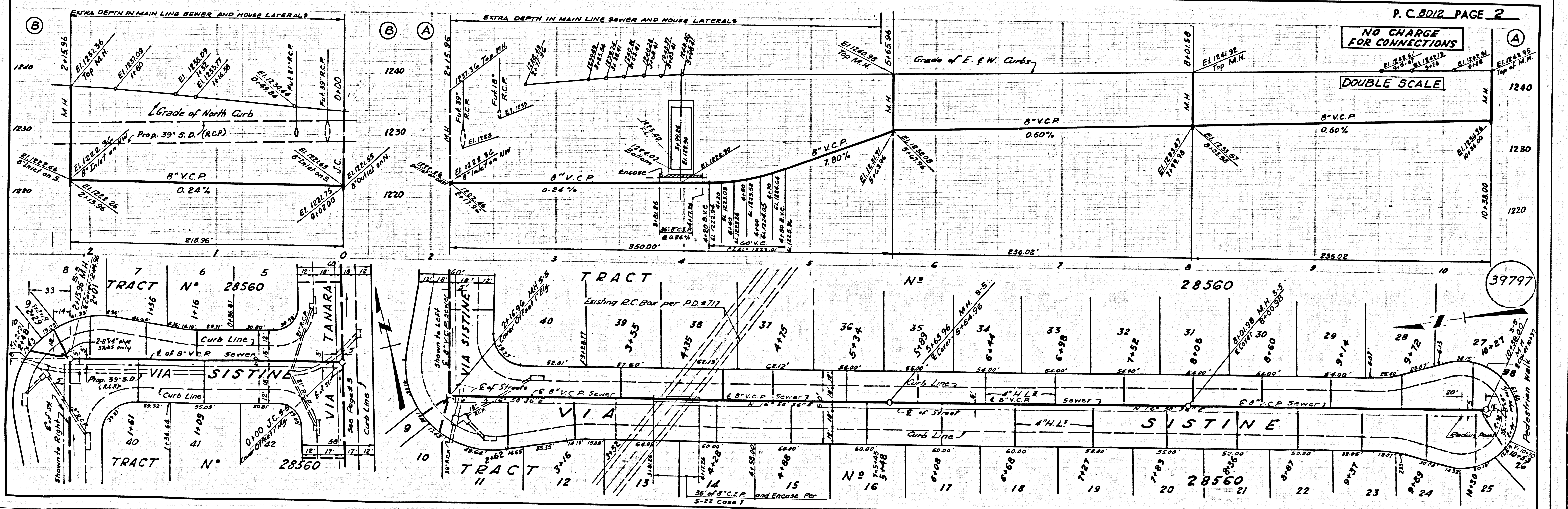
- LEGEND
- MINIMUM EXCAVATION SAFETY REQUIREMENTS S-1
  - BRICK MANHOLE S-2
  - NON REINFORCED PRECAST CONCRETE MANHOLE S-3
  - REINFORCED PRECAST CONCRETE MANHOLE S-4
  - MANHOLE FRAME AND COVER S-5
  - MANHOLE STEP S-6
  - BEDDING FOR SEWER PIPE S-7
  - CRADLING AND ENCASMENT S-8
  - WYE OR TEE SUPPORT S-9
  - ALLOWABLE TRENCH WIDTHS S-10
  - SPECIAL HOUSE LATERALS S-20
  - SPECIAL SUPPORT AND PROTECTION S-22

NOTICE TO CONTRACTOR  
 The existence and location of any underground utility pipes or structures shown on these plans are obtained by a search of the available records. To the best of my knowledge there are no existing utilities except as shown on these plans. The contractor is required to take due precautionary measures to protect the utility lines shown and any other lines not of record or not shown on these plans.  
*Michael R. Madala*  
 REG. C.E. NO. 16768

COUNTY OF LOS ANGELES, CALIFORNIA  
 JOHN A. LAMBE, COUNTY ENGINEER J. D. PARKHURST, CHIEF ENGINEER  
 CO. SAN. DIST. NO. 82  
 APPROVED BY *Michael R. Madala* REGIONAL ENGINEER APPROVED BY *J. D. Parkhurst* CHIEF ENGINEER

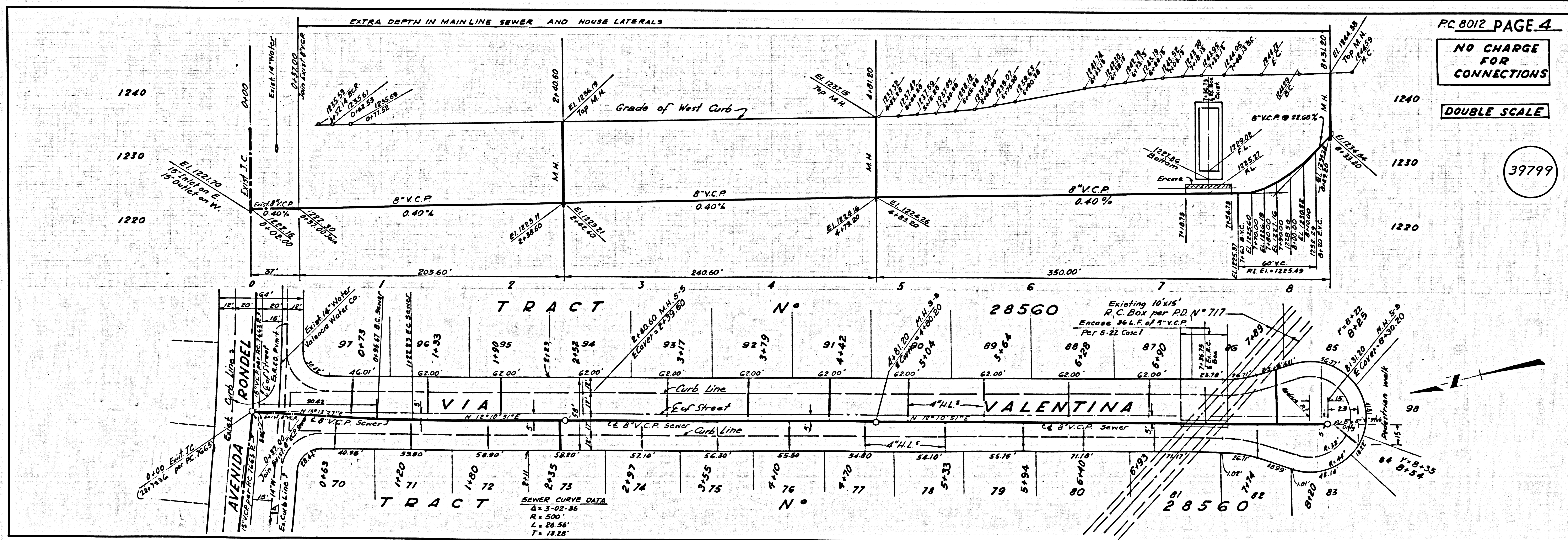
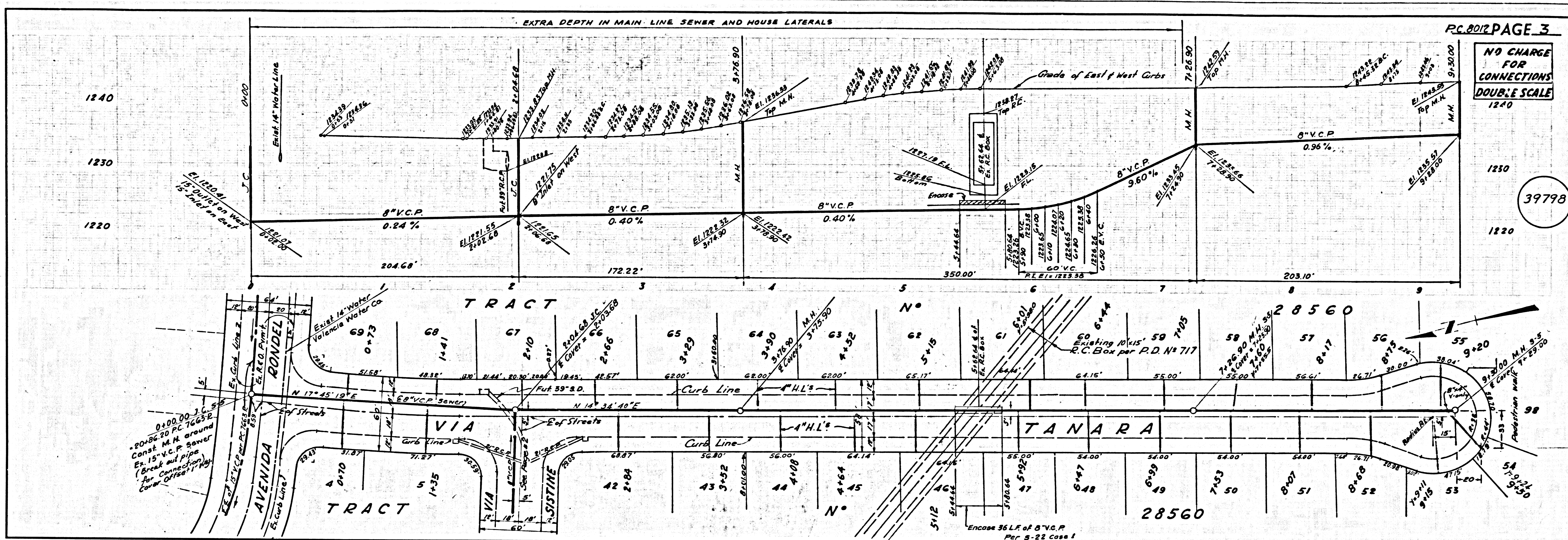
CHECKED BY *Ralph Schep* 2/29/68  
 REG. C.E. NO. 13302E

J.N. 025002



P.C. 8012 PAGE 2  
 NO CHARGE FOR CONNECTIONS  
 DOUBLE SCALE

39797



NO CHARGE FOR CONNECTIONS

DOUBLE SCALE

39800

