

B.M. BY 5958 ELEV. 363.135
 L+BE N. CO. 1 FT ± B.C.R. ON N.W. COR.
 PALOS VERDES DR. N. + PALOS VERDES
 DR. E. (WARDLINE P.W.) 66 FT ±
 N + 40 FT ± W. 64' INT.
 PALOS VERDES QUAD. 19 68

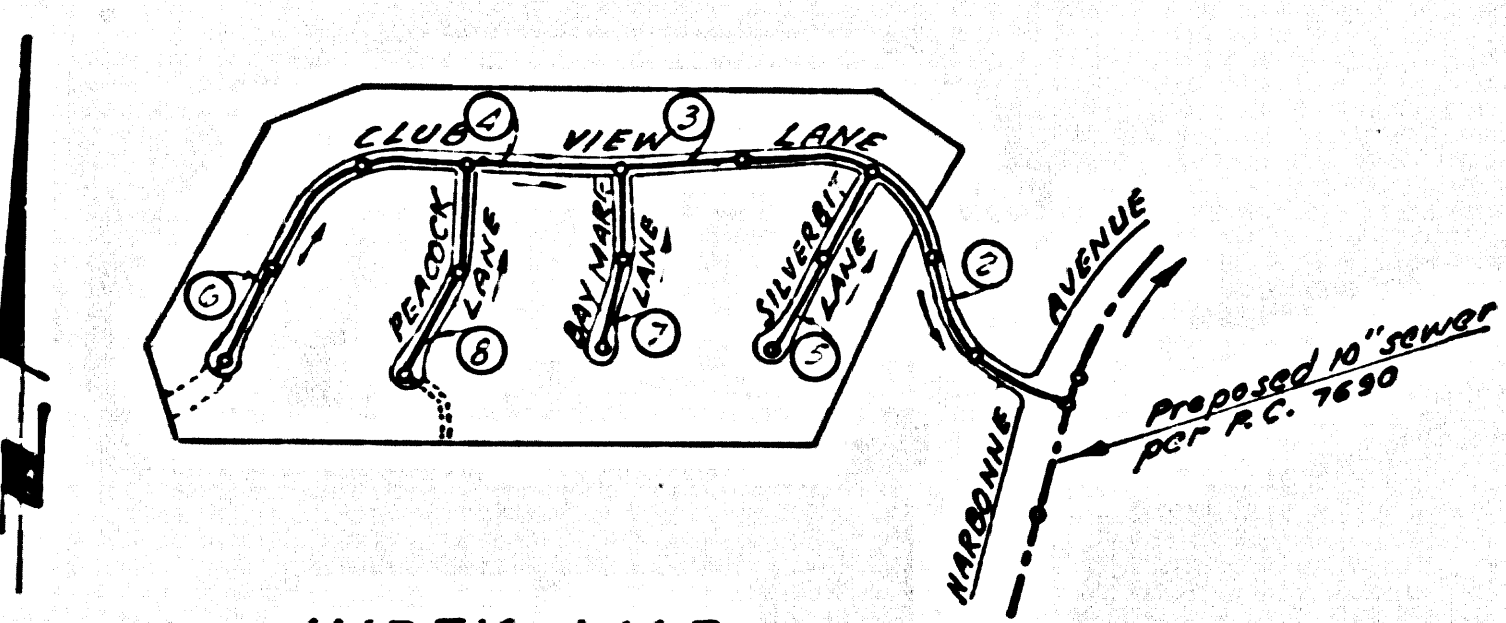
Note: Deduct 0.49 FT. from all elevations shown on these plans to adjust to B.M. BY 5958

REVISIONS

G-3-68 Page 6, Revised curb and sewer grade on Club View Lane from Sta. 20+30.00 to Sta. 27+28.00.	Approved Richard A. Lambie
G-3-68 Page 8, Revised curb grade on Paroquet Lane from Sta. 0+50 to Sta. 5+30.	W/L 1/6/68

County Sanitation Districts shall be notified prior to the following so that required inspection can be made (Phone No. 630977)

- (1) Commencement of construction of manhole on District trunk sewer.
- (2) Breaking into existing manhole on District trunk sewer.
- (3) Commencing District trunk sewer.
- (4) Construction of house connections to District trunk sewer.
- (5) Acceptance of the project.



THE FOLLOWING CITY ENGINEER STANDARD PLANS APPLY TO THIS PROJECT:

Legend	S-1
Minimum Excavation Safety Requirements	S-2
Brick Manhole	S-3
Non-reinforced Precast Concrete Manhole	S-5
Manhole Frame & Cover	S-15
Manhole Step	S-17
Bedding for Sewer Pipe	S-21
Cradling and easement	S-23
Wye and Support	S-26
Allowable Trench Widths	S-33
Chimney Pipe & Base	S-37

NO CONNECTIONS FOR THE DISPOSAL OF INDUSTRIAL WASTES SHALL BE MADE TO SEWERS SHOWN ON THESE DRAWINGS WITHOUT WRITTEN PERMISSION FROM THE CHIEF ENGINEER AND GENERAL MANAGER OF THE COUNTY SANITATION DISTRICTS.

DOUBLE SCALE
 ROLLING HILLS ESTATES BLDG. DIST. NO. 12.03

PROFILE, ALIGNMENT AND GRADE OF
 SANITARY SEWERS PAGE 1
 P.C. 8016

TRACT No 22688

PRIVATE CONTRACT NO. 8016

W.S. 27
 4 SHEETS, 8 PAGES

SCALE: VERT. 1"=8' HORIZ. 1"=40' JAN. 1968

PREPARED IN THE OFFICES OF
 E.L. PEARSON AND ASSOCIATES

By: *Paul H. Jones*
 REG. C. E. NO. 15857

FOR LEGEND SEE PLAN NO. S-1

NOTE:
 GRADES TO WHICH THE IMPROVEMENT IS TO BE CONSTRUCTED ARE SHOWN ON PLANS AND PROFILE. GRADE POINTS FOR TOP OF CURB, CENTER LINE OF SEWER, OR CENTER LINE OF ALLEYS ARE SHOWN BY CHECKS ON PROFILE. AT ALL POINTS BETWEEN DESIGNATED ELEVATIONS ARE IN FEET ABOVE U.S.C. & G.S. 1929 MEAN SEA LEVEL DATUM OF 1929.
 THIS DRAWING AND THE DATA HEREON ARE HEREBY MADE A PART OF THE SPECIFICATIONS.
 THE CONTRACTOR SHALL BE RESPONSIBLE FOR OBTAINING ALL NECESSARY PERMITS FROM THE L.A. COUNTY ROAD DEPT., DISTRICT OFFICE NO. 1, AND PAY A FEE TO THE CITY ENGINEER, 12500 WILSON BLVD., LOS ANGELES, CALIF. TO COVER THE COST OF CONSTRUCTION INSPECTION AND RECORD PLANS.
 APPROVAL OF THIS PLAN BY THE CITY OF ROLLING HILLS DOES NOT CONSTITUTE A REPRESENTATION AS TO THE ACCURACY OF THE LOCATION OR THE EXISTENCE OR NON-EXISTENCE OF ANY UNDERGROUND UTILITY PIPE, OR STRUCTURE WITHIN THE LIMITS OF THE PROJECT. THIS NOTE APPLIES TO ALL PAGES.
 IF WORK IS TO BE DONE IN A STATE HIGHWAY, A PERMIT MUST BE OBTAINED FROM THE STATE OF CALIFORNIA, DIVISION OF HIGHWAYS, 120 SOUTH SPRING STREET, LOS ANGELES, CALIFORNIA.

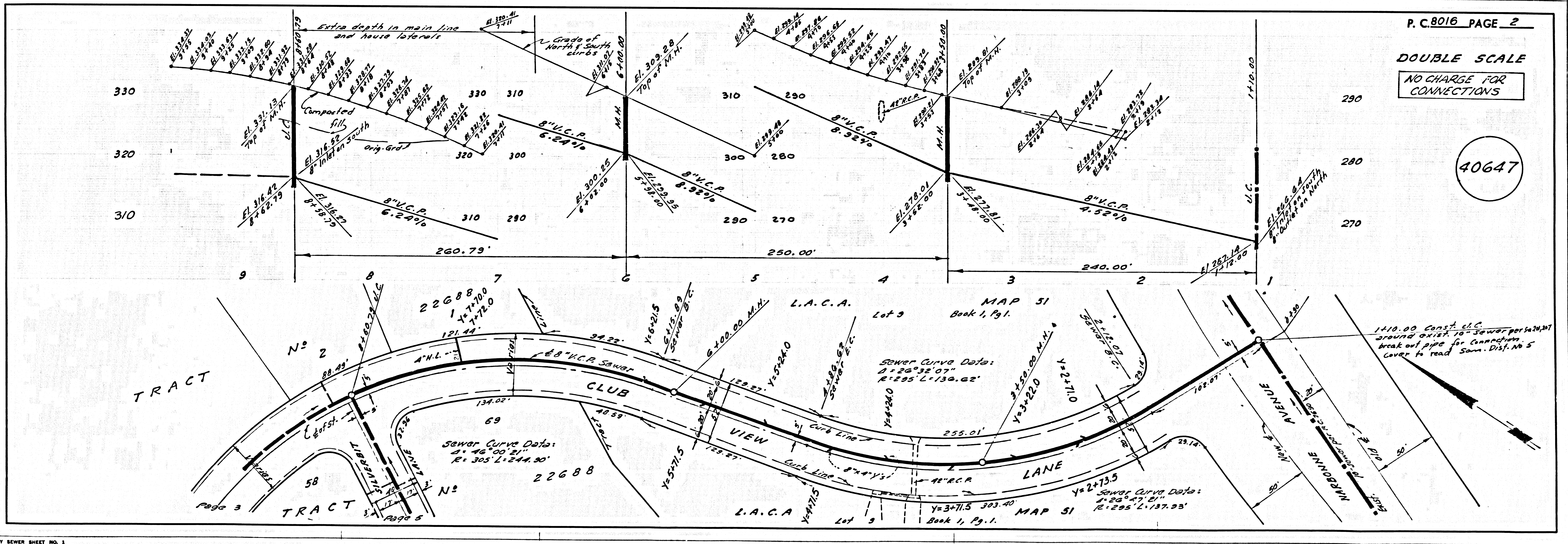
CITY OF ROLLING HILLS ESTATES, CALIFORNIA
 JOHN A. LAMBIE, CITY ENGINEER
 J. D. PARKHURST, CHIEF ENGINEER
 CO. SAN. DIST. NO. 5
 APPROVED BY: *Richard A. Lambie* REGIONAL ENGINEER APPROVED BY: *J. D. Parkhurst* CHIEF ENGINEER

CHECKED BY: *Howard L. Deady* 5/5/68
 REG. C. E. NO. 15852

- NOTES:
1. PROVIDE STAKES ON THE PROPERTY LINE OR PROPERTY LINES PRODUCED AT RIGHT ANGLES TO THE SEWER LINE AT THE CENTER LINE OF EACH MANHOLE.
 2. NO REPRESENTATIVE OF THE CITY ENGINEER WILL SURVEY OR LAY OUT ANY PORTION OF THE WORK.
 3. THE PRIVATE ENGINEER SHALL FURNISH THE CITY ENGINEER WITH GRADE SHEETS AND STATIONING FOR ALL HOUSE LATERALS AND "Y" BRANCHES AND SHALL PROVIDE STAKES FOR THESE AT THEIR PROPER LOCATIONS WITH STATIONING PLAINLY MARKED. ALL HOUSE LATERALS SHALL BE CONSTRUCTED IN A STRAIGHT ALIGNMENT AT RIGHT ANGLES TO THE MAIN LINE SEWER EXCEPT AS SHOWN ON THE PLANS. HOUSE LATERALS FROM CHIMNEYS SHALL NOT HAVE AN ANGLE OF LESS THAN 45° WITH THE MAIN LINE SEWER. ANY CHANGE IN ALIGNMENT SHALL BE REQUESTED IN WRITING BY THE PRIVATE ENGINEER.
 4. THE PRIVATE ENGINEER SHALL FURNISH THE HOUSE LATERAL DEPTH AT THE PROPERTY LINE BELOW THE TOP OF CURB ELEVATION FOR EACH HOUSE LATERAL ON THE GRADE SHEET.
 5. NO REVISIONS SHALL BE MADE IN THESE PLANS WITHOUT THE APPROVAL OF THE CITY ENGINEER.
 6. THE CONTRACTOR SHALL NOTIFY THE CONSTRUCTION DIVISION BY TELEPHONE, MADISON 9-202, EXT. 8159, AT LEAST TWENTY-FOUR HOURS BEFORE STARTING ANY WORK UNDER THIS CONTRACT.
 7. MANHOLES SHALL BE BRICK SEWER STRUCTURES PER S-3, OR PRECAST CONCRETE MANHOLES PER S-5 OR S-6 EXCEPT AS NOTED.
 8. "Y" OR "Y" BRANCHES MAY BE USED FOR CONNECTIONS TO MAINLINE SEWER, EXCEPT AS NOTED.
 9. MANHOLE TOPS IN UNIMPROVED RIGHTS-OF-WAY TO BE SIX INCHES ABOVE FINISHED GRADE.
 10. USE EXTRA STRENGTH PIPE. ALL PIPE IS STANDARD DEPTH EXCEPT AS NOTED.
 11. UNTRIFIED CLAY PIPE SHALL BE TYPE "D", "F" OR "G" PER STD. SPEC'S SEC. 204-2.
 12. IF A POWER POLE IS WITHIN THREE FEET OF THE SEWER, THE SEWER SHALL BE ENCASED, PER S-23, TWO FEET ON EACH SIDE FROM THE POINT OF INTERFERENCE.
 13. IF DURING THE COURSE OF CONSTRUCTION IT IS DETERMINED THAT THERE IS LESS THAN FOUR FEET OF COVER OVER THE TOP OF A MAIN LINE OR HOUSE LATERAL V.C.P. SEWER WHICH IS NOT INDICATED ON THE PLANS, THE PIPE SHALL BE ENCASED PER S-23, UNLESS OTHERWISE APPROVED BY THE CITY ENGINEER.
 14. HOUSE LATERALS TO BE CONSTRUCTED WITH INVERTS AT PROPERTY LINE 6 FEET BELOW CURB GRADE EXCEPT AS NOTED.
 15. REINFORCE ALL TRENCHES WITHIN PAVED AREAS TO MEET L.A. COUNTY ROAD DEPT. OR CALIFORNIA STATE HIGHWAY REQUIREMENTS IN ACCORDANCE WITH PERMITS.
 16. SEWERS TO BE TESTED PER LEAKAGE PER SEC. 206 - 2.3.7 STD. SPEC'S
 17. ALL STATE AND LOCAL TRENCH SAFETY ORDERS WILL BE STRICTLY ENFORCED.

COLLECT CHARGES AS INDICATED

NOTICE TO CONTRACTOR
 The assistance and location of any underground utility pipes or structures shown on these plans are obtained by a search of the available records. To the best of my knowledge the utility lines shown are correct. The contractor is required to take due precautionary measures to protect the utility lines shown and any other lines not of record or not shown on these plans.
Paul H. Jones
 REG. C. E. NO. 15857



P.C. 8016 PAGE 2

DOUBLE SCALE
 NO CHARGE FOR CONNECTIONS

40647

B.M. BY 5358 ELEV. 363.135
 L+80 N. CA 1 FT 3 B.C. 9 MM COR.
 PALOS VERDES DR N. + PALOS VERDES
 DR S. (CHARBONNE AVE.) 58 FT S
 W + 48 FT 3 W. 1/2 INT.
 PALOS VERDES QUAD. 19 65

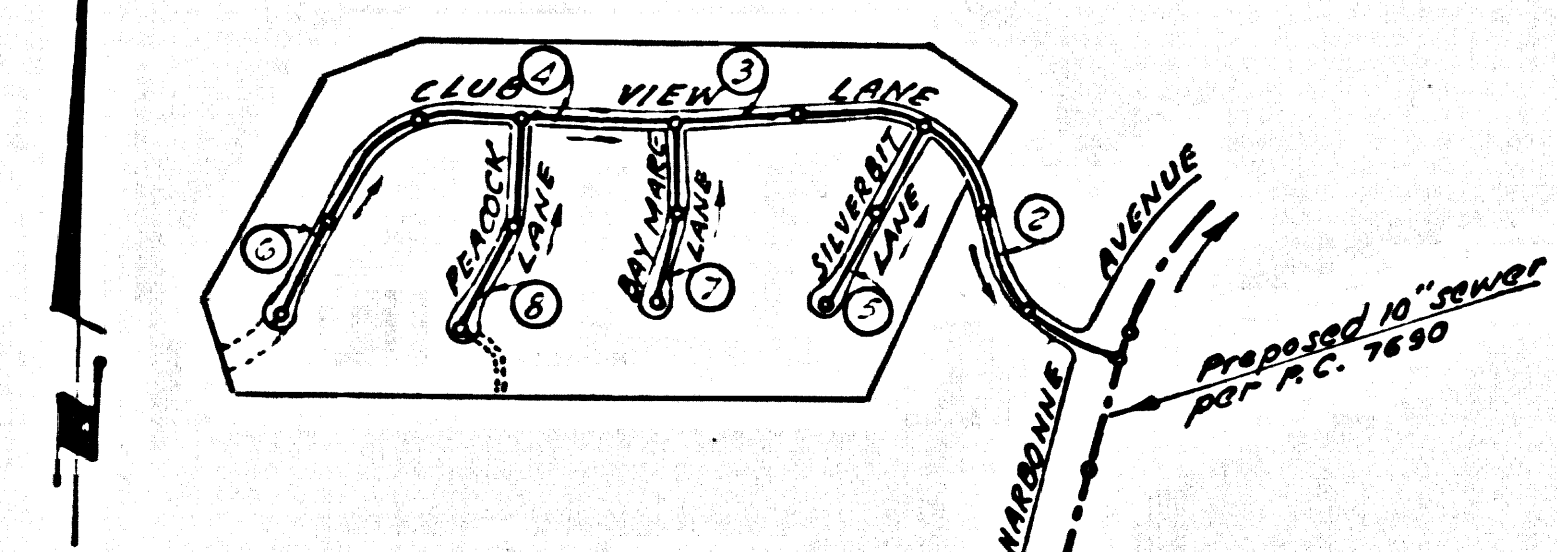
Note: Deduct 0.43 ft. from all elevations shown
 on these plans to equate to B.M. B.Y. 5358

REVISIONS

6-3-eB Page 6, Revised curb and sewer grade on Club View Lane from Sta. 20+30.00 to Sta. 27+30.00.	Approved Edward J. Walsh
6-3-cB Page 8, Revised curb grade on Brook Lane from Sta. 0+50 to Sta. 5+30.	6/6/68

County Sanitation Districts shall be notified prior to the following so that required inspection can be made (Phone NE 63097)

- (1) Commencement of construction of manhole on District trunk sewer.
- (2) Excavation and setting of manhole on District trunk sewer.
- (3) Excavation and setting of District trunk sewer.
- (4) Construction of house connections to District trunk sewer.
- (5) Acceptance of the project.



INDEX MAP
 TRACT NO. 22688
 P.C. 8016
 Scale 1"=600'

NO CONNECTIONS FOR THE DISPOSAL OF INDUSTRIAL WASTES SHALL BE MADE TO SEWERS SHOWN ON THESE DRAWINGS WITHOUT WRITTEN PERMISSION FROM THE CHIEF ENGINEER AND GENERAL MANAGER OF THE COUNTY SANITATION DISTRICTS.

THE FOLLOWING CITY ENGINEER STANDARD PLANS APPLY TO THIS PROJECT:

Legend	S-1
Minimum Excavation Safety Requirements	S-2
Brick Manhole	S-3
Non-reinforced Precast Concrete Manhole	S-5
Manhole Frame & Cover	S-15
Manhole Step	S-17
Bedding for Sewer Pipe	S-21
Cradling and easement	S-23
Wye and Support	S-26
Allowable Trench Widths	S-33
Chimney Pipe & Base	S-37

DOUBLE SCALE
 ROLLING HILLS ESTATES BLDG. DIST. NO. 12.03

- NOTES
- PROVIDE STAKES ON THE PROPERTY LINE OR PROPERTY LINES PRODUCED AT RIGHT ANGLES TO THE SEWER LINE AT THE CENTER LINE OF EACH MANHOLE.
 - NO REPRESENTATIVE OF THE CITY ENGINEER WILL SURVEY OR LAY OUT ANY PORTION OF THE WORK.
 - THE PRIVATE ENGINEER SHALL FURNISH THE CITY ENGINEER WITH GRADE SHEETS AND STATIONING FOR ALL HOUSE LATERALS AND "Y" OR "T" BRANCHES AND SHALL PROVIDE STAKES FOR THEM AT THEIR PROPER LOCATIONS WITH STATIONING PLAINLY MARKED. ALL HOUSE LATERALS SHALL BE CONSTRUCTED IN A STRAIGHT ALIGNMENT AT RIGHT ANGLES FROM THE MAIN LINE SEWER EXCEPT AS SHOWN ON THE PLANS. HOUSE LATERALS FROM CHIMNEYS SHALL NOT HAVE AN ANGLE OF LESS THAN 45° WITH THE MAIN LINE SEWER. ANY CHANGE IN ALIGNMENT SHALL BE REQUESTED IN WRITING BY THE PRIVATE ENGINEER.
 - THE PRIVATE ENGINEER SHALL FURNISH THE HOUSE LATERAL DEPTH AT THE PROPERTY LINE BELOW THE TOP OF CURB ELEVATION FOR EACH HOUSE LATERAL ON THE GRADE SHEET.
 - NO REVISIONS SHALL BE MADE IN THESE PLANS WITHOUT THE APPROVAL OF THE CITY ENGINEER.
 - THE CONTRACTOR SHALL NOTIFY THE PROTECTION DIVISION BY TELEPHONE, MADISON 8-02, EXT. 8131, AT LEAST TWENTY-FOUR HOURS BEFORE STARTING ANY WORK UNDER THIS CONTRACT.
 - MANHOLES SHALL BE BRICK SEWER STRUCTURES PER S-5 OF PRECAST CONCRETE MANHOLES PER S-5 OR S-6 EXCEPT AS NOTED.
 - "T" OR "Y" BRANCHES MAY BE USED FOR CONNECTIONS TO MAINLINE SEWER, EXCEPT AS NOTED.
 - MANHOLE TOPS IN UNIMPROVED RIGHTS-OF-WAY TO BE SIX INCHES ABOVE FINISHED GRADE.
 - USE EXTRA STRENGTH PIPE. ALL PIPE IS STANDARD DEPTH EXCEPT AS NOTED.
 - VERTICAL CLAY PIPE JOINTS SHALL BE TYPE "D", "F" OR "G" PER STD. SPEC. SEC. 308-2.
 - IF A POWER POLE IS WITHIN THREE FEET OF THE SEWER, THE SEWER SHALL BE ENCASED, PER S-23, TWO FEET ON EACH SIDE FROM THE POINT OF INTERFERENCE.
 - IF DURING THE COURSE OF CONSTRUCTION IT IS DETERMINED THAT THERE IS LESS THAN FOUR FEET OF COVER OVER THE TOP OF A MAIN LINE OR HOUSE LATERAL V.C.P. SEWER WHICH IS NOT INDICATED ON THE PLANS, THE PIPE SHALL BE ENCASED PER S-23, UNLESS OTHERWISE APPROVED BY THE CITY ENGINEER.
 - HOUSE LATERALS TO BE CONSTRUCTED WITH INVERTS AT PROPERTY LINE & FEET BELOW CURB GRADE EXCEPT AS NOTED.
 - RESURFACE ALL TRENCHES WITHIN PAVED AREAS TO MEET L.A. COUNTY ROAD DEPT. OR CALIFORNIA STATE HIGHWAY REQUIREMENTS IN ACCORDANCE WITH PERMITS.
 - SEWERS TO BE TESTED FOR LEAKAGE PER SEC. 306 - P. 3.7 STD. SPEC.
 - ALL STATE AND LOCAL TRENCH SAFETY ORDERS WILL BE STRICTLY ENFORCED.

NOTICE TO CONTRACTOR

The existence and location of any underground utility pipes or structures shown on these plans are indicated by a search of the available records. To the best of my knowledge there are no existing utilities except as shown on these plans. The contractor is required to take due precautionary measures to protect the utility lines shown and any other lines not of record or not shown on these plans.

Paul H. Jones
 REG. C.E. NO. 15887

COLLECT CHARGES AS INDICATED

PROFILE, ALIGNMENT AND GRADE OF
 SANITARY SEWERS PAGE 1

TRACT NO. 22688

PRIVATE CONTRACT NO. 8016

W.S. 27

4 SHEETS, 8 PAGES

SCALE: VERT. 1"=4' HOR. 1"=40'

JAN. 1968
 40646

PREPARED IN THE OFFICES OF
 E.L. PEARSON AND ASSOCIATES

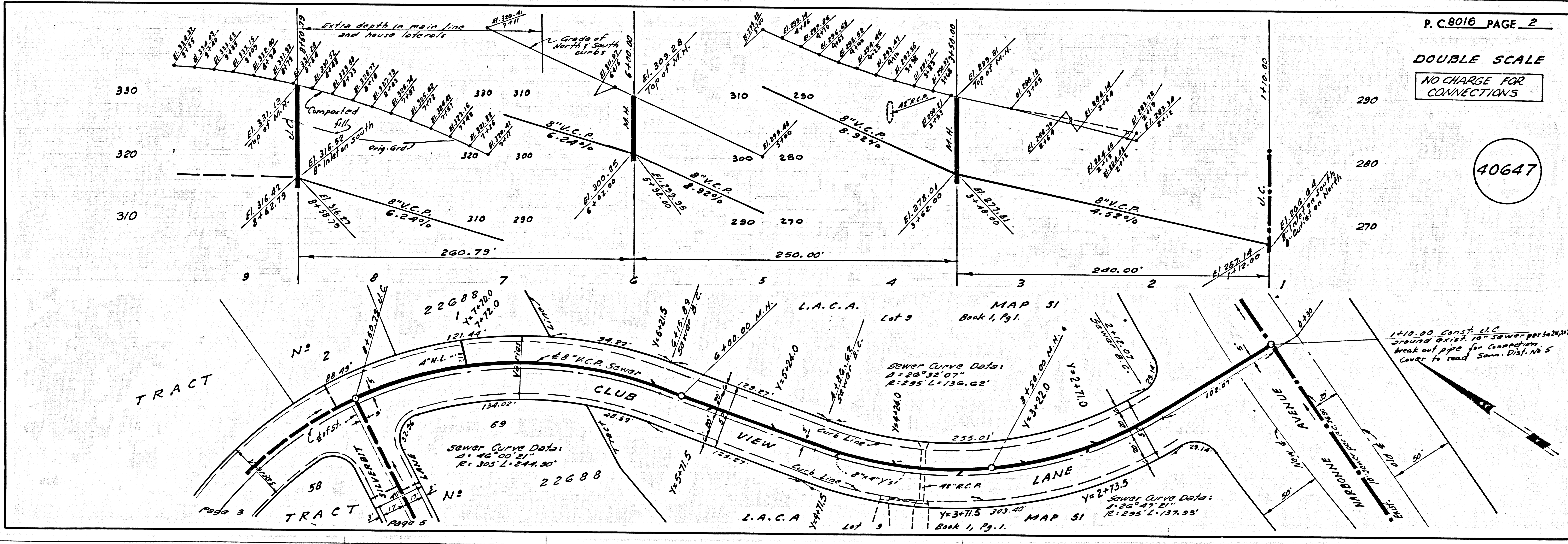
Paul H. Jones
 REG. C.E. NO. 15887

FOR LEGEND SEE PLAN NO. S-1

NOTE:
 GRADES TO WHICH THIS IMPROVEMENT IS TO BE CONSTRUCTED ARE SHOWN ON PLANS AND PROFILES. GRADE POINTS FOR TOP OF CURBS, CENTER LINE OF STREETS, OR CENTER LINE OF ALLEYS ARE SHOWN BY CIRCLES ON PROFILES AT ALL POINTS BETWEEN DESIGNATED POINTS. THE GRADE SHALL BE ESTABLISHED SO AS TO CONFORM TO A STRAIGHT LINE DRAWN BETWEEN SAID DESIGNATED POINTS. ELEVATIONS ARE IN FEET ABOVE U.S.C. & G.S. SEA LEVEL DATUM OF 1929.
 THIS DRAWING AND THE DATA HEREON ARE HEREBY MADE A PART OF THE SPECIFICATIONS.
 WORK SHALL BE CONSTRUCTED ACCORDING TO STANDARD SPECIFICATIONS FOR PUBLIC WORKS CONSTRUCTION AND CITY ENGINEER APPROVAL. APPROVAL DOES NOT CONSTITUTE A GUARANTEE OF THE ACCURACY OF THE DATA OR THE EXISTENCE OR NON-EXISTENCE OF ANY UNDERGROUND UTILITY PIPE, OR STRUCTURE WITHIN THE LIMITS OF THE PROJECT. THE USER ASSUMES ALL LIABILITY FOR THE USE OF THIS DRAWING.
 IF WORK IS TO BE DONE IN A STATE HIGHWAY, A PERMIT MUST BE OBTAINED FROM THE STATE OF CALIFORNIA, DIVISION OF HIGHWAYS, 120 SOUTH SPRING STREET, LOS ANGELES, CALIFORNIA.

CITY OF ROLLING HILLS ESTATES, CALIFORNIA
 JOHN A. LAMBIE, CITY ENGINEER
 J. D. PARKHURST, CHIEF ENGINEER
 CO. SAN. DIST. NO. 5
 APPROVED BY: Paul H. Jones, REGIONAL ENGINEER
 APPROVED BY: J. D. Parkhurst, CHIEF ENGINEER

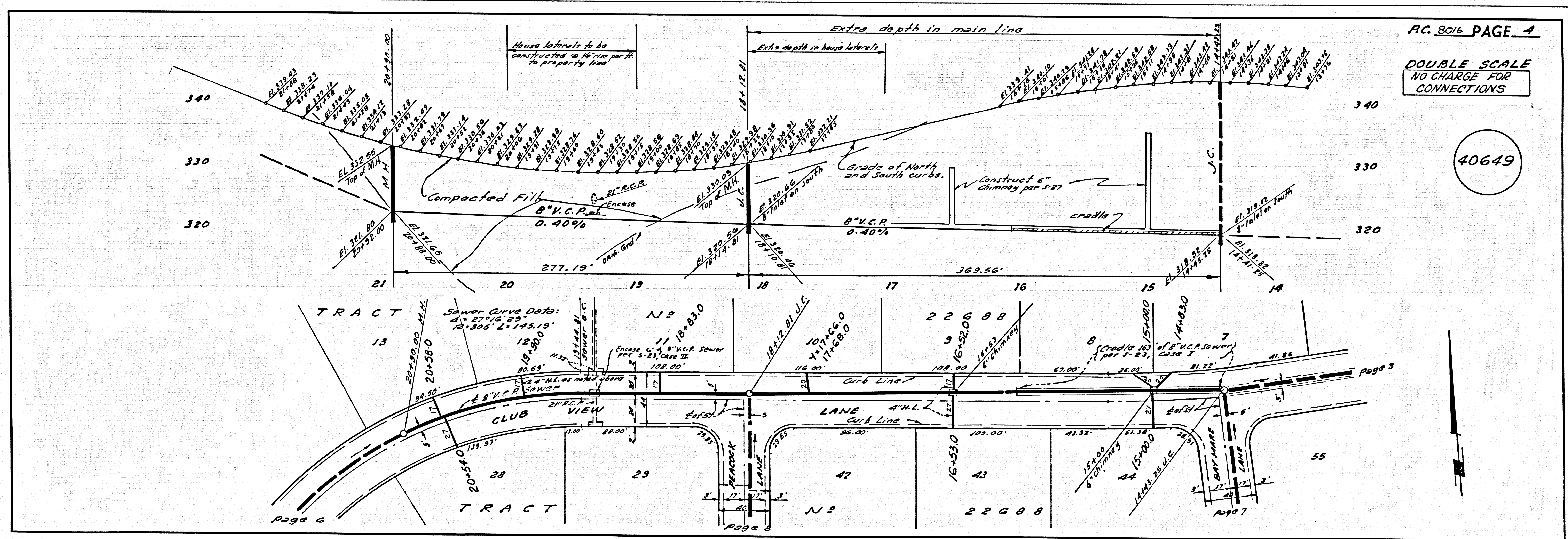
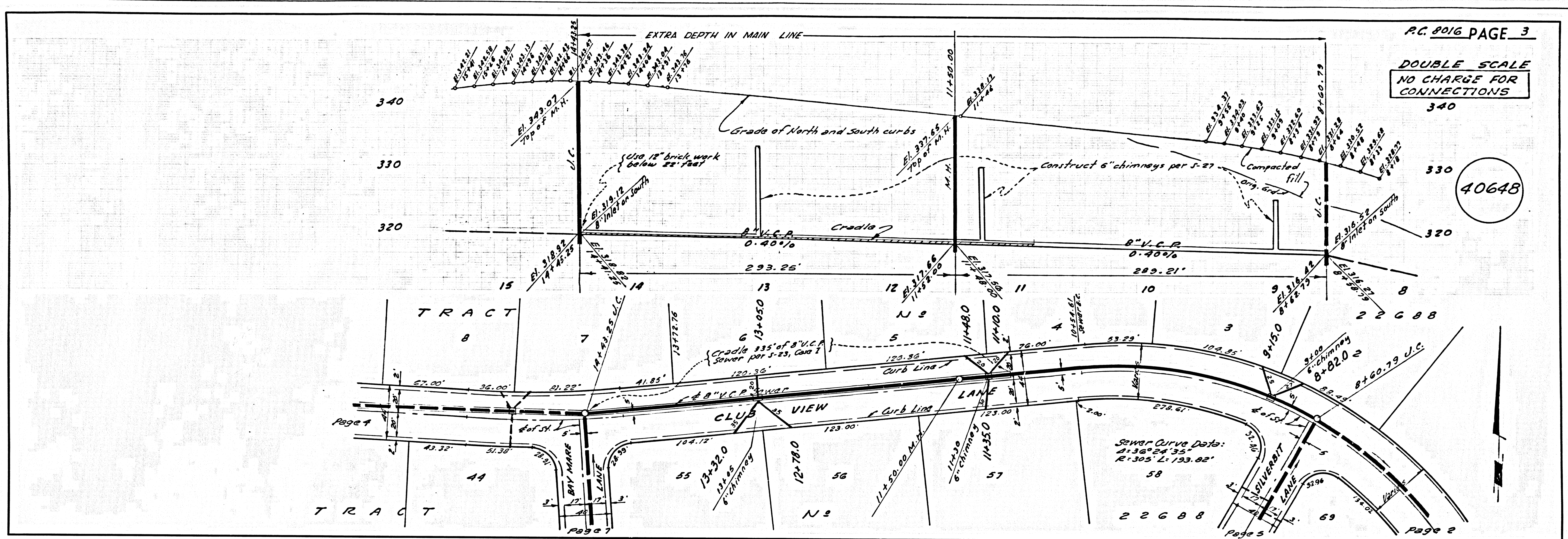
CHECKED BY: Edward J. Walsh 5/3/68
 REG. C.E. NO. 10653

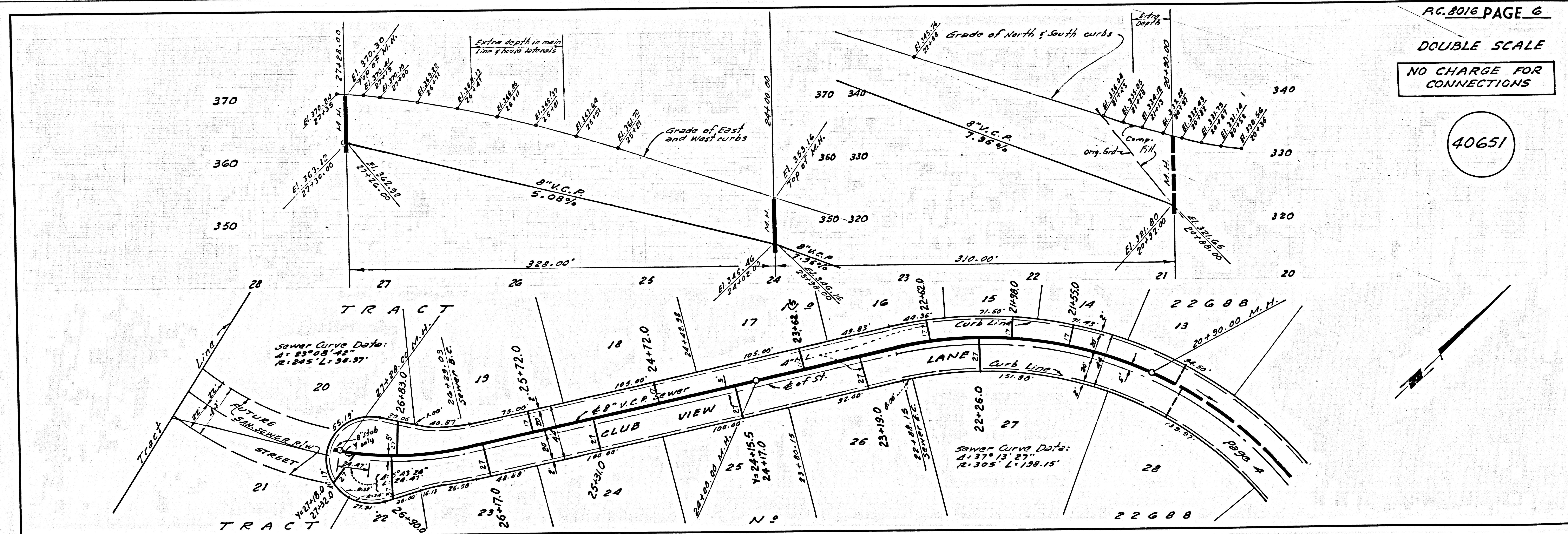
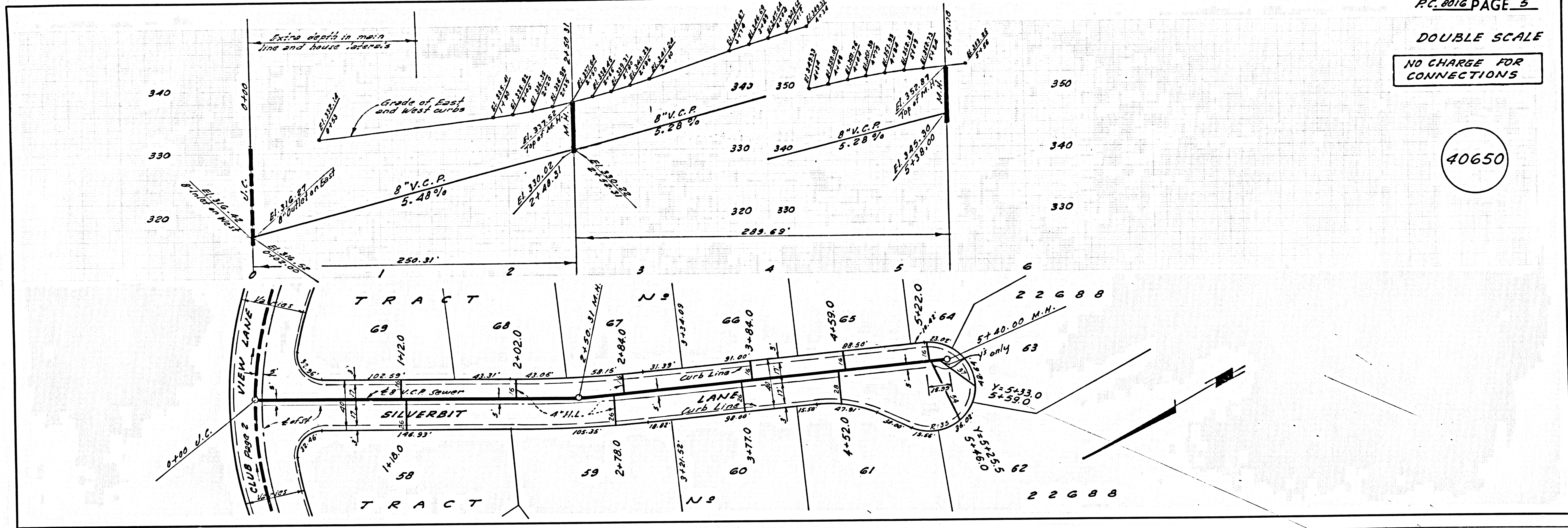


P.C. 8016 PAGE 2

DOUBLE SCALE
 NO CHARGE FOR CONNECTIONS

40647

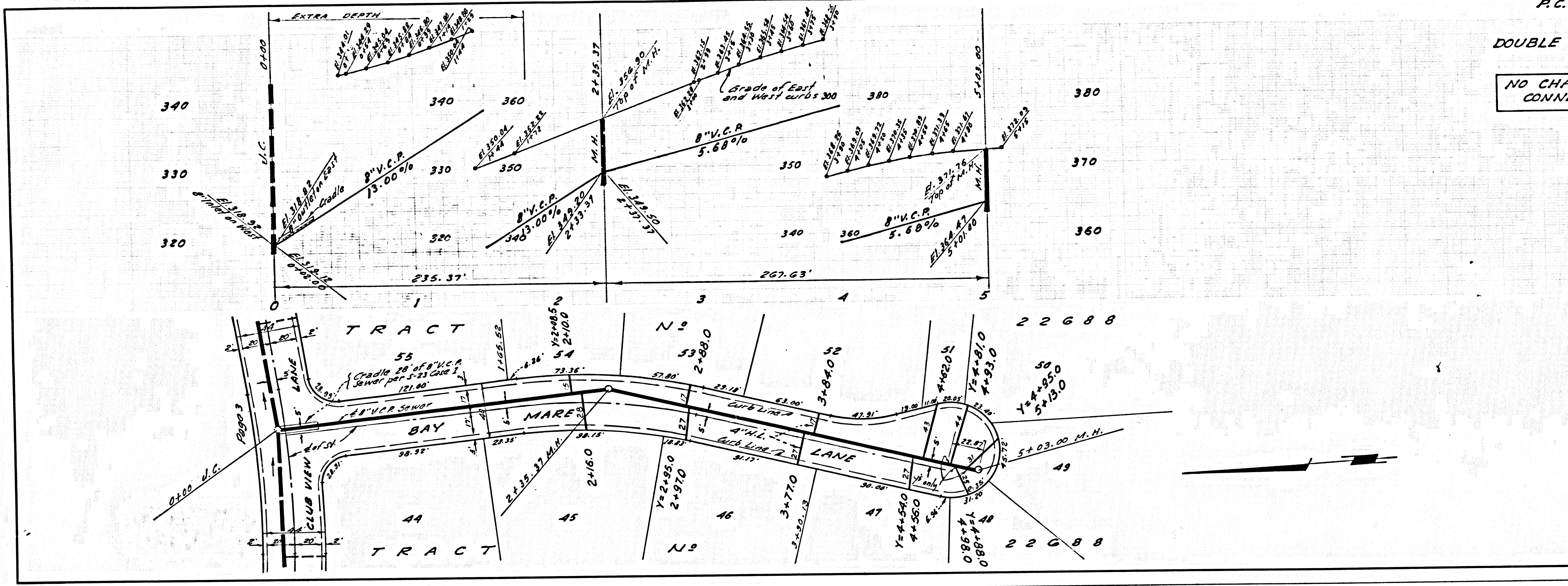




DOUBLE SCALE

NO CHARGE FOR CONNECTIONS

40652



DOUBLE SCALE

NO CHARGE FOR CONNECTIONS

40653

