

B.M. SY 5333 ELEV. 1042.724
 Readm top of 4" V.C.P. over chain pipe
 of curb 15' ± E approx. 4' ± Int.
 via bearing Canyon Rd. (Municipal)
 Hwy 2 1/2 S. post.
 (500 ±)

Note: Lot 16 of Tract No. 29153
 have been served by P.C. 7660

DOUBLE SCALE
 CALABASAS BLDG. DIST. NO. 9.1

PROFILE, ALIGNMENT AND GRADE OF P.C. 8022
 SANITARY SEWERS PAGE 1
 TO BE CONSTRUCTED IN

TRACT No 29153

PRIVATE CONTRACT NO. 8022

W.S. 60

4 SHEETS, 7 PAGES

SCALE: VERT. 1" = 4' HORIZ. 1" = 40'

FEBRUARY, 1968

PREPARED IN THE OFFICE OF
 E. L. PEARSON AND ASSOCIATES

By Paul H. Jones 2-12-68
 REG. C.E. NO. 15857

FOR LEGEND SEE PLAN NO. S-1

TESTING NOTES

- 1) MANHOLE LEAKAGE TEST
 At the discretion of the district representative one manhole out of every 10 manholes and a minimum of two will be filled with water and after three hours will be checked for leakage with no drop in level. For every manhole not passing tests, five more will be tested at the discretion of the district representative.
- 2) CUR TESTING
 All lines shall be air tested.

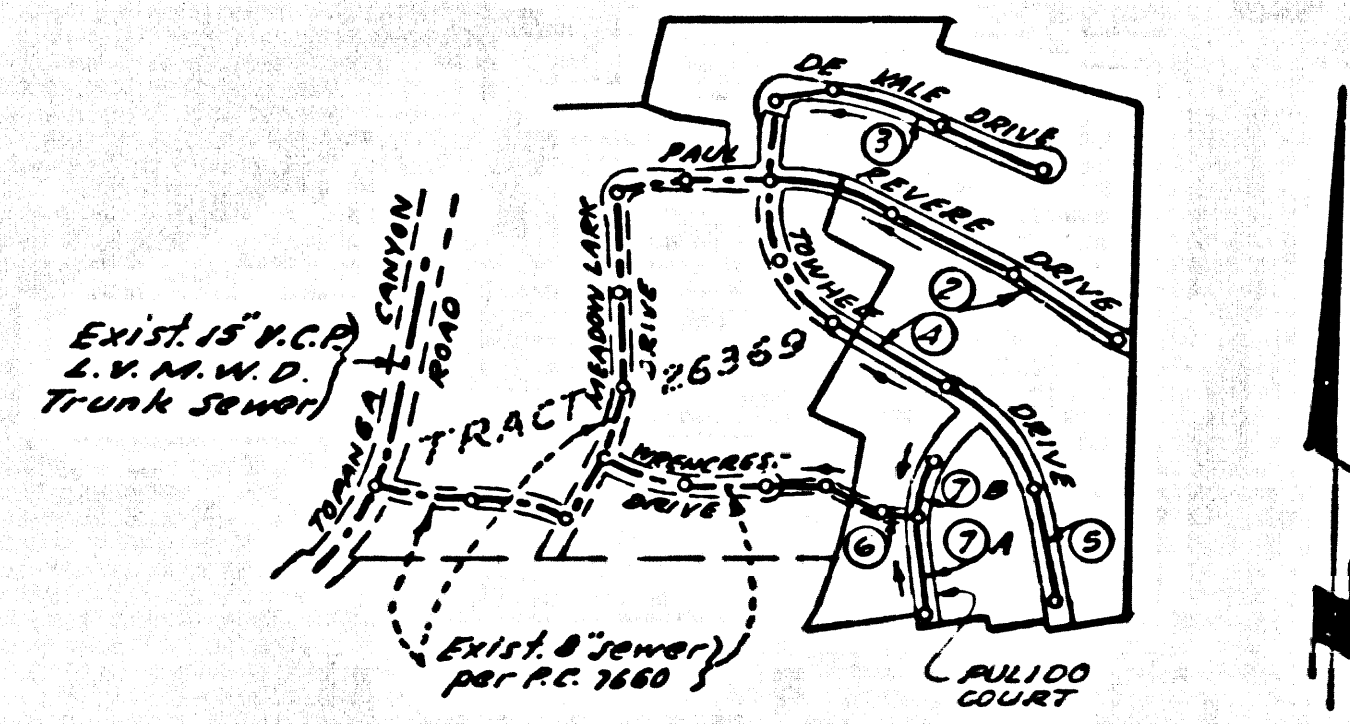
The time taken to lose one (1) pound per square inch gauge pressure from three (3) pounds per square inch gauge pressure to two (2) pounds per square inch gauge pressure shall not be less than times shown on the following table:

MAIN PIPE DIAMETER	MINIMUM TIME LOST
15" - 20"	3 minutes
21" - 30"	3 minutes
33" - 36"	4 minutes

If the time is less than listed in the table above, the contractor shall make such repairs as are necessary to eliminate excessive leakage. Air pressure in test section shall not exceed 5 p.s.i. gauge pressure at any time.

THE FOLLOWING COUNTY ENGINEER STANDARD PLANS APPLY TO THIS PROJECT

LEGEND	5-1
MIN. SAFETY REQ.	5-2
BRICK MANHOLE	5-3
NON REINFORCED CONC. M.H.	5-4
REINFORCED CONC. M.H.	5-5
M.H. FRAME & COVER	5-15
M.H. STEP	5-17
BEDDING FOR PIPE	5-21
CRADLING & ENCASEMENT	5-23
WYE OR TEE SUPPORT	5-26
CHIMNEY	5-27
ALLOWABLE TRENCH WIDTH	5-33
BAFFLE BOARD	5-31



KEY MAP
 TRACT No 29153
 P.C. 8022
 Scale 1" = 500'
 All Sewers are 8" V.C.P.

- NOTES:
1. PROVIDE STAKES ON THE PROPERTY LINE OR PROPERTY LINES PRODUCED AT RIGHT ANGLES TO THE SEWER LINE AT THE CENTER LINE OF EACH MANHOLE.
 2. NO REPRESENTATIVE OF THE COUNTY ENGINEER WILL SURVEY OR LAY OUT ANY PORTION OF THE WORK.
 3. THE PRIVATE ENGINEER SHALL FURNISH THE COUNTY ENGINEER WITH GRADE SHEETS AND STATIONING FOR ALL HOUSE LATERALS AND "T" BRANCHES AND SHALL PROVIDE STAKES FOR THEM AT THEIR PROPER LOCATIONS WITH STATIONING PLAINLY MARKED. ALL HOUSE LATERALS SHALL BE CONSTRUCTED IN A STRAIGHT ALIGNMENT AT RIGHT ANGLES FROM THE MAIN LINE SEWER EXCEPT AS SHOWN ON THE PLANS. HOUSE LATERALS FROM CHIMNEYS SHALL NOT HAVE AN ANGLE OF LESS THAN 45° WITH THE MAIN LINE SEWER. ANY CHANGE IN ALIGNMENT SHALL BE REQUESTED IN WRITING BY THE PRIVATE ENGINEER.
 4. THE PRIVATE ENGINEER SHALL FURNISH THE HOUSE LATERAL DEPTH AT THE PROPERTY LINE BELOW THE TOP OF CURB ELEVATION FOR EACH HOUSE LATERAL ON THE GRADE SHEET.
 5. NO REVISIONS SHALL BE MADE IN THESE PLANS WITHOUT THE APPROVAL OF THE COUNTY ENGINEER.
 6. THE CONTRACTOR SHALL NOTIFY THE CONSTRUCTION DIVISION BY TELEPHONE, MADISON 9-6747, EXT. 81581, AT LEAST TWENTY-FOUR HOURS BEFORE STARTING ANY WORK UNDER THIS CONTRACT.
 7. MANHOLES SHALL BE BRICK SEWER STRUCTURES PER S-3 PRECAST CONCRETE MANHOLES PER S-4 OR S-6 MAY BE USED AS AN ALTERNATE IN LOCATIONS APPROVED BY THE COUNTY ENGINEER.
 8. USE STANDARD MANHOLE FRAMES AND COVERS, S-16, EXCEPT AS NOTED.
 9. MANHOLE TOPS IN UNIMPROVED RIGHTS-OF-WAY TO BE SIX INCHES ABOVE FINISHED GRADE.
 10. USE EXTRA STRENGTH PIPE. ALL PIPE IS STANDARD DEPTH EXCEPT AS NOTED.
 11. INTERFERENCE CLAY PIPE JOINTS SHALL BE TYPE "D", 7" & 8" PER STD. SPEC. SEC. 208-2
 12. IF A POWER POLE IS WITHIN THREE FEET OF THE SEWER, THE SEWER SHALL BE ENCASED, PER S-23, TWO FEET ON EACH SIDE FROM THE POINT OF INTERFERENCE.
 13. IF DURING THE COURSE OF CONSTRUCTION IT IS DETERMINED THAT THERE IS LESS THAN FOUR FEET OF COVER OVER THE TOP OF A MAIN LINE OR HOUSE LATERAL V.C.P. SEWER WHICH IS NOT INDICATED ON THE PLANS, THE PIPE SHALL BE ENCASED PER S-23, UNLESS OTHERWISE APPROVED BY THE COUNTY ENGINEER.
 14. HOUSE LATERALS TO BE CONSTRUCTED WITH INVERTS AT PROPERTY LINE 6 FEET BELOW CURB GRADE EXCEPT AS NOTED.
 15. RESURFACE ALL TRENCHES WITHIN PAVED AREAS TO MEET L.A. COUNTY ROAD DEPT. OR CALIFORNIA STATE HIGHWAY REQUIREMENTS IN ACCORDANCE WITH PLANS.
 16. ALL STATE AND LOCAL TRENCH SAFETY ORDERS WILL BE STRICTLY ENFORCED.
 17. Special backfill in designated areas:
 - a) Backfill trench (replace other earth removed so as to achieve the natural or finished grades and slopes shown on the grading plan approved for this tract by the Building and Safety Division.
 - b) All backfill (earth replaced shall be compacted to a maximum of 20% of maximum density per A.S.T.M. Standard Method D-698/17 as modified, acceptable certification of such compaction shall be submitted to the construction division.
 18. Swage pipe bedding shall conform to S-29.
 19. T's may be used in place of Y's except as noted.

COLLECT CHARGES AS INDICATED

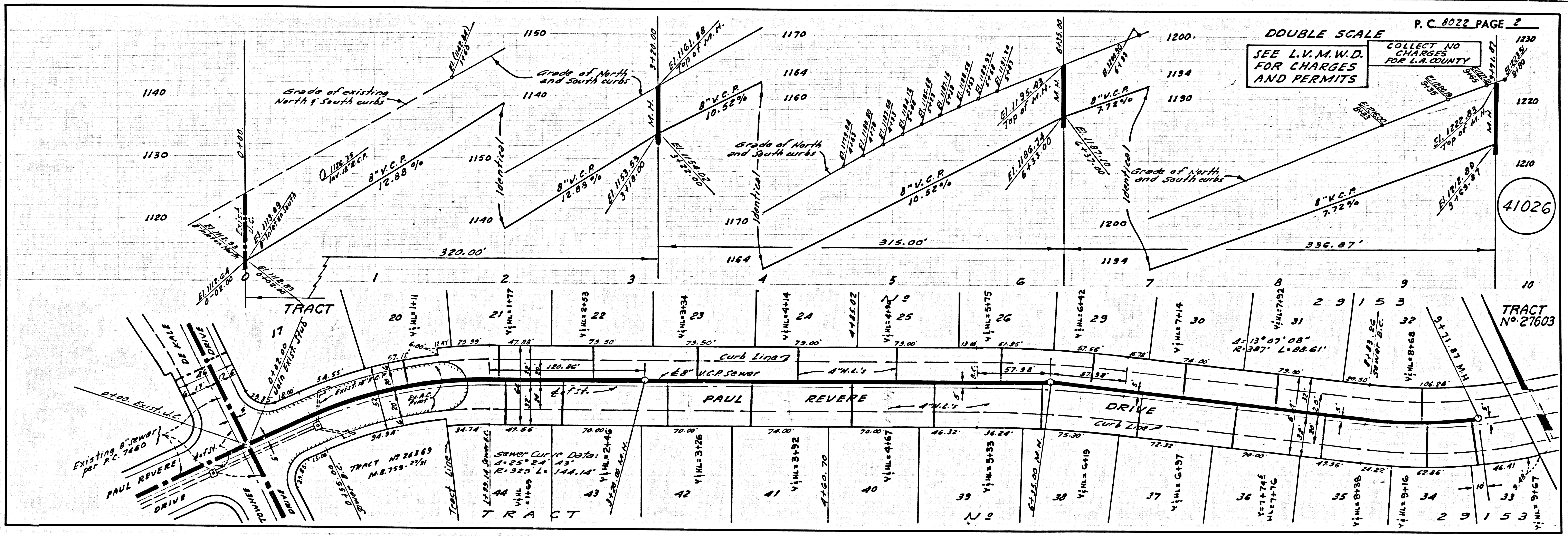
NOTICE TO CONTRACTOR
 The existence and location of any underground utility pipes or structures shown on these plans are obtained by a search of the available records. To the best of my knowledge there are no existing utilities shown as shown on these plans. The contractor is required to take due precautionary measures to protect the utility lines shown and any other lines not of record or not shown on these plans.
 Paul H. Jones
 REG. C.E. NO. 15857

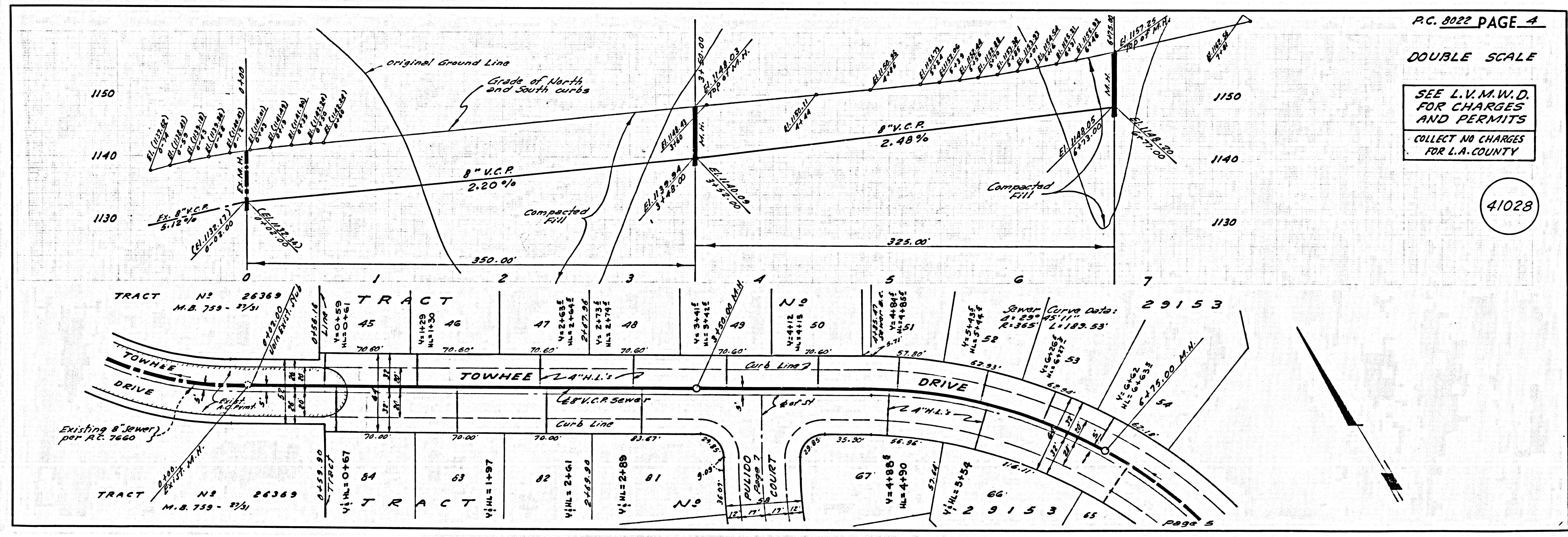
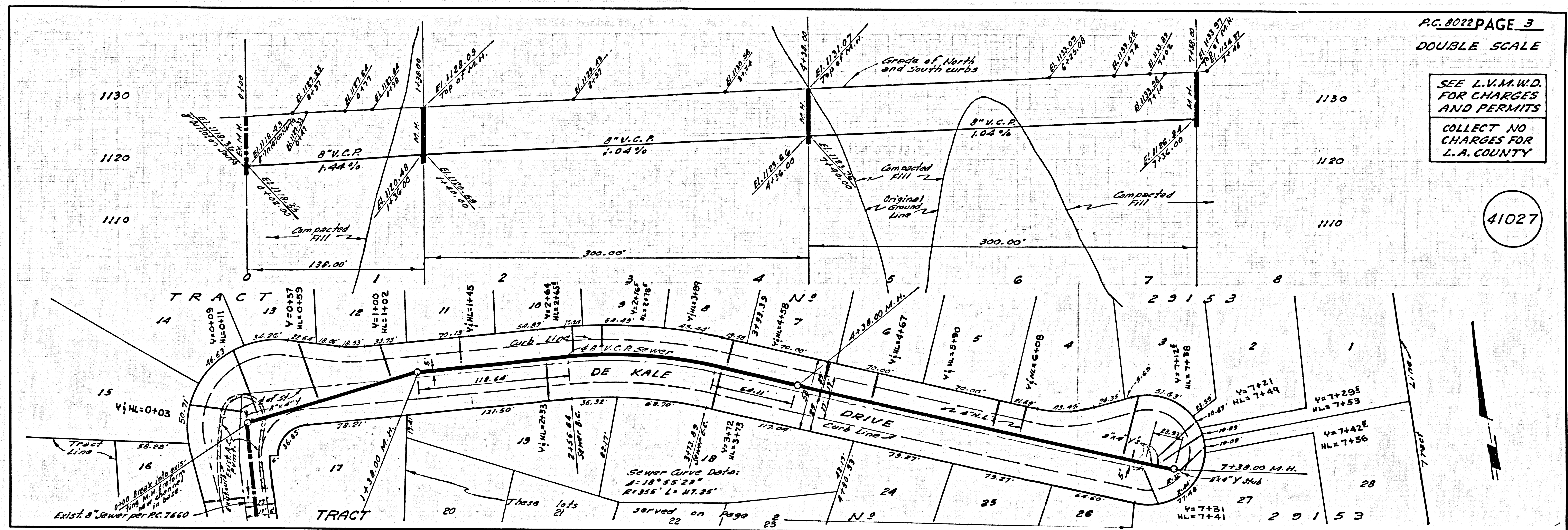
GRADE TO WHICH THIS IMPROVEMENT IS TO BE CONSTRUCTED ARE SHOWN ON PLANS AND PROFILES. GRADE POINTS FOR TOP OF CURB, CENTER LINE OF STREETS, OR CENTER LINE OF ALLEYS ARE SHOWN BY CIRCLES ON PROFILES. AT ALL POINTS BETWEEN DESIGNATED POINTS THE GRADE SHALL BE ESTABLISHED SO AS TO CONFORM TO A STRAIGHT LINE DRAWN BETWEEN SAID DESIGNATED POINTS. THIS DRAWING AND THE DATA HEREON ARE HEREBY MADE A PART OF THE SPECIFICATIONS. WORK SHALL BE CONSTRUCTED ACCORDING TO STANDARD SPECIFICATIONS FOR PUBLIC WORKS CONSTRUCTION (COUNTY SPECIFICATIONS) AND STANDARD SPECIFICATIONS FOR PUBLIC WORKS CONSTRUCTION (CITY SPECIFICATIONS) AND STANDARD SPECIFICATIONS FOR PUBLIC WORKS CONSTRUCTION (STATE SPECIFICATIONS) AND STANDARD SPECIFICATIONS FOR PUBLIC WORKS CONSTRUCTION (FEDERAL SPECIFICATIONS) AND STANDARD SPECIFICATIONS FOR PUBLIC WORKS CONSTRUCTION (MUNICIPAL SPECIFICATIONS). BEFORE WORK CAN BE STARTED, THE CONTRACTOR MUST OBTAIN A PERMIT TO EXCAVATE IN COUNTY STREETS FROM THE L.A. COUNTY ROAD DEPT., DISTRICT OFFICE NO. 2, 1100 1/2 W. 11th ST., LOS ANGELES, CALIF. AND PAY A FEE TO THE COUNTY ENGINEER, ROOM 302, COUNTY ENGINEERING DIVISION, 100 WEST SECOND STREET, LOS ANGELES, CALIF. REGIONAL OFFICE, SUPPLEMENT TO COVER THE COST OF CONSTRUCTION INSPECTION AND RECORD PLANS.

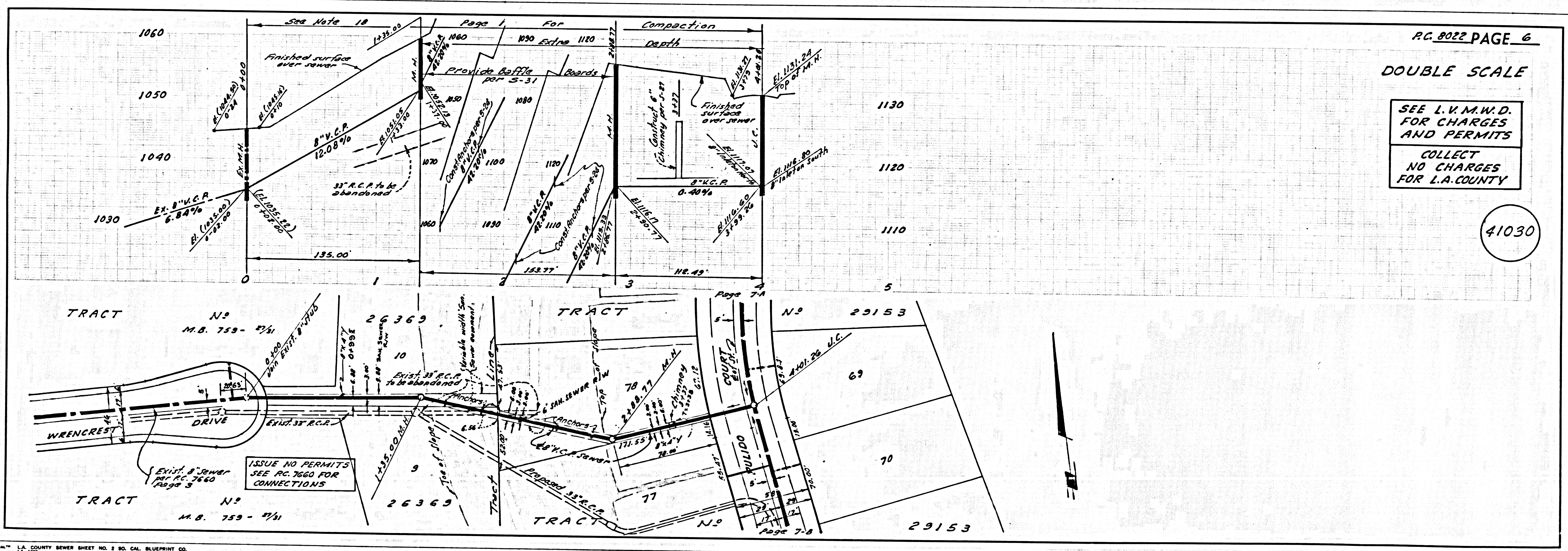
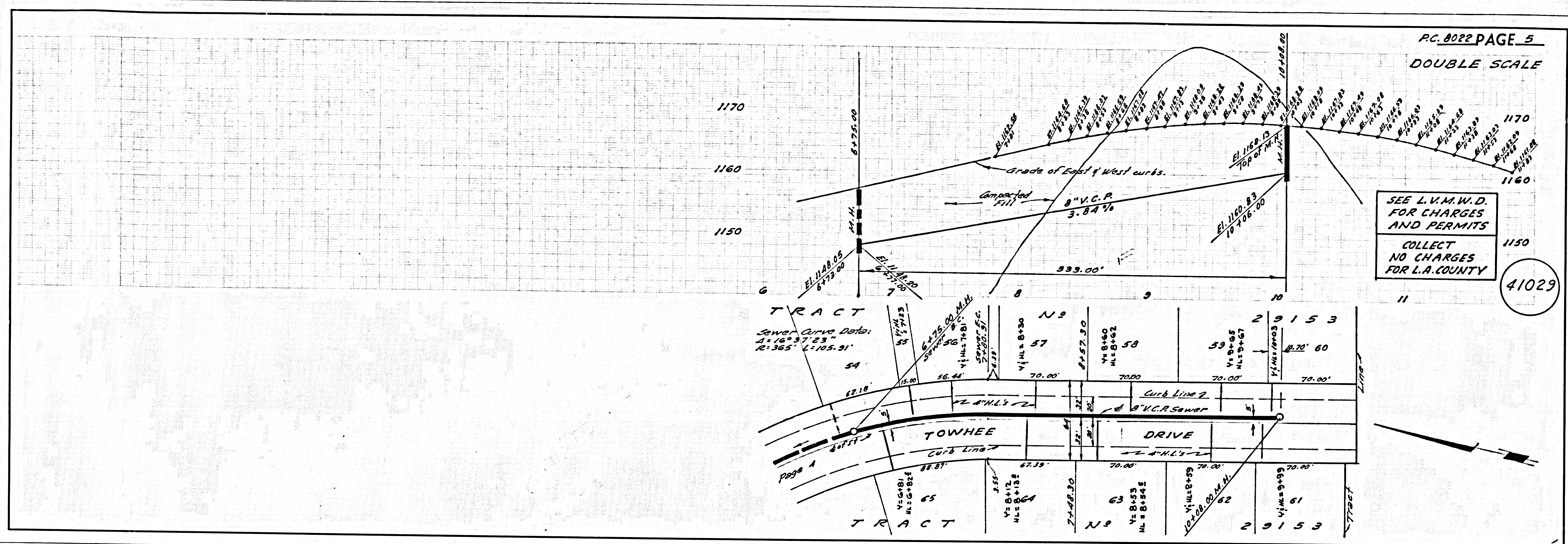
COUNTY OF LOS ANGELES, CALIFORNIA
 JOHN A. LAMBE, COUNTY ENGINEER
 APPROVED BY: [Signature] Regional Engineer
 APPROVED BY: [Signature] General Manager & Chief Engineer

CHECKED BY: [Signature] 7-12-68
 REG. C.E. NO. 2224

J.N. 0250.02







SEE L.V.M.W.D.
FOR CHARGES
AND PERMITS
COLLECT NO CHARGES
FOR L.A. COUNTY

41031

