

B.M. 573920 ELEV. 35.618
 L. & T. in Conc. Punt. 19' x 12'
 West of & intersection
 Main of 223rd St. to East.
 GARDENA QUAD. 1960

- County Sanitation Districts shall be notified prior to the following so that required inspection can be made (Phone: 656-3097)
- 1) Commencement of construction of manhole on District trunk sewer.
 - 2) Breaking into existing manhole on District trunk sewer.
 - 3) Core drilling District trunk sewer.
 - 4) Construction of house connections to District trunk sewer.
 - 5) Acceptance of the project.

CITY OF CARSON BLDG. DIST. NO. 12.05

PROFILE, ALIGNMENT AND GRADE OF
 SANITARY SEWERS PAGE 1
 TO BE CONSTRUCTED IN

TRACT No 30178
 PRIVATE CONTRACT NO. 8024

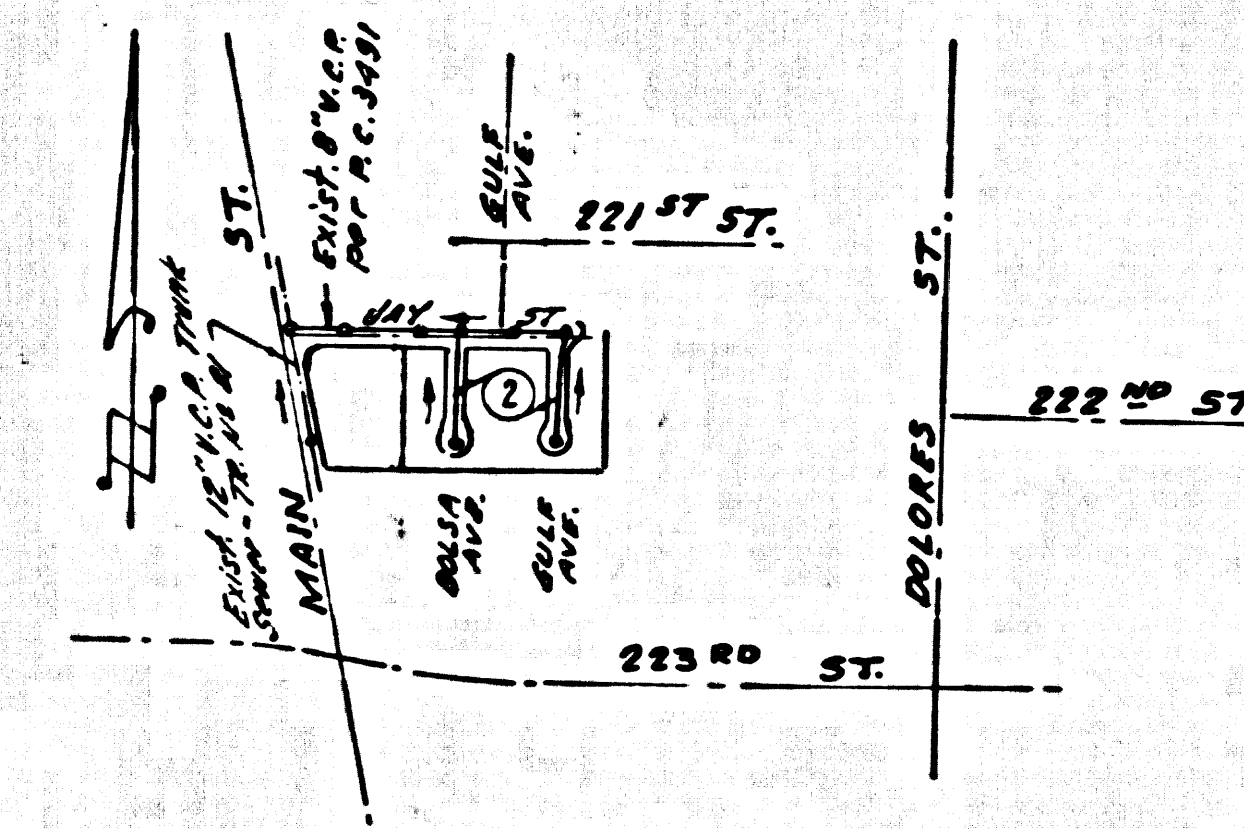
W.S. 28
 1 SHEET 2 PAGES

SCALE: HORIZ. 1" = 40' VERT. 1" = 4'

PREPARED IN THE OFFICES OF
 E.L. PEARSON & ASSOCIATES:

REG. C. E. NO. 2727

FOR LEGEND SEE PLAN NO. S-1



THE FOLLOWING CITY ENGINEER STANDARD PLANS APPLY TO THIS PROJECT

LEGEND	S - 1
MINIMUM EXCAVATION	S - 2
SAFETY REQUIREMENT	S - 3
BRICK MANHOLE	S - 4
NON REINFORCED PRECAST CONCRETE MANHOLE	S - 5
MANHOLE FRAME & COVER	S - 15
MANHOLE STEP	S - 17
BEDDING FOR SEWER PIPE	S - 21
CRADLING & ENCASEMENT	S - 23
WYE OR TEE SUPPORT	S - 26
ALLOWABLE TRENCH WIDTHS	S - 33

PRIVATE ENGINEER'S NOTICE TO CONTRACTOR:
 The existence and location of any underground utility pipes or structures shown on these plans are obtained by a search of the available records. To the best of our knowledge there are no existing utilities except as shown on this map. The contractor is required to take due precautionary measures to protect the utility lines shown and any other lines not of record or not shown on this drawing.

John C. Clark
 Registered Engineer No. 5727

- NOTES:
1. PROVIDE STAKES ON THE PROPERTY LINE OR PROPERTY LINES PRODUCED AT RIGHT ANGLES TO THE SEWER LINE AT THE CENTER LINE OF EACH MANHOLE.
 2. NO REPRESENTATIVE OF THE CITY ENGINEER WILL SURVEY OR LAY OUT ANY PORTION OF THE WORK.
 3. THE PRIVATE ENGINEER SHALL FURNISH THE CITY ENGINEER WITH GRADE SHEETS AND STATIONING FOR ALL HOUSE LATERALS AND 7" x 4" T. BRANCHES AND SHALL PROVIDE STAKES FOR THEM AT THEIR PROPER LOCATIONS WITH STATIONING PLAINLY MARKED. ALL HOUSE LATERALS SHALL BE CONSTRUCTED IN A STRAIGHT ALIGNMENT AT RIGHT ANGLES FROM THE MAIN LINE SEWER EXCEPT AS SHOWN ON THE PLANS. HOUSE LATERALS FROM CHIMNEYS SHALL NOT HAVE AN ANGLE OF LESS THAN 45° WITH THE MAIN LINE SEWER. ANY CHANGE IN ALIGNMENT SHALL BE REQUESTED IN WRITING BY THE PRIVATE ENGINEER.
 4. THE PRIVATE ENGINEER SHALL FURNISH THE HOUSE LATERAL DEPTH AT THE PROPERTY LINE BELOW THE TOP OF CURB ELEVATION FOR EACH HOUSE LATERAL ON THE GRADE SHEET.
 5. NO DIVERSIONS SHALL BE MADE IN THESE PLANS WITHOUT THE APPROVAL OF THE CITY ENGINEER.
 6. THE CONTRACTOR SHALL NOTIFY THE CONSTRUCTION DIVISION BY TELEPHONE, HANDSON 9-420, EXT. 8158, AT LEAST TWENTY-FOUR HOURS BEFORE STARTING ANY WORK UNDER THIS CONTRACT.
 7. ALL STRUCTURES SHALL BE EITHER BRICK MANHOLES PER S-4 OR PRECAST CONCRETE MANHOLES PER S-5 - 26 & S-15, EXCEPT AS NOTED.
 8. 7" x 4" T. BRANCHES MAY BE USED FOR CONNECTIONS TO MAIN LINE SEWERS, EXCEPT AS NOTED.
 9. MANHOLE TOPS IN UNIMPROVED RIGHTS-OF-WAY TO BE 24 INCHES ABOVE FINISHED GRADE.
 10. USE EXTRA STRENGTH PIPE. ALL PIPE IS STANDARD DEPTH EXCEPT AS NOTED.
 11. UNTRIED CLAY PIPE UNITS SHALL BE TYPE "D", "X", OR "W" PER STD. SPEC. 208-2.
 12. IF A POWER POLE IS WITHIN THREE FEET OF THE SEWER, THE SEWER SHALL BE ENCASED, PER S-23, TWO FEET ON EACH SIDE FROM THE POINT OF INTERFERENCE.
 13. IF DURING THE COURSE OF CONSTRUCTION IT IS DETERMINED THAT THERE IS LESS THAN FOUR FEET OF COVER OVER THE TOP OF A MAIN LINE OR HOUSE LATERAL V.C.P. SEWER WHICH IS NOT INDICATED ON THE PLANS, THE PIPE SHALL BE ENCASED PER S-23, UNLESS OTHERWISE APPROVED BY THE CITY ENGINEER.
 14. HOUSE LATERALS TO BE CONSTRUCTED WITH INVERTS AT PROPERTY LINE 4 FEET BELOW CURB GRADE EXCEPT AS NOTED.
 15. RESURFACE ALL TRENCHES WITHIN PAVED AREAS TO MEET L.A. COUNTY ROAD DEPT. OR CALIFORNIA STATE HIGHWAY REQUIREMENTS IN ACCORDANCE WITH PERMITS.
 16. JAWERS TO BE TESTED FOR LEAKAGE PER SECTION JOE - 2.3.7 S.H. SPECIFICATIONS.
 17. ALL STATE AND LOCAL TRAFFIC SAFETY ORDERS WILL BE STRICTLY ENFORCED.

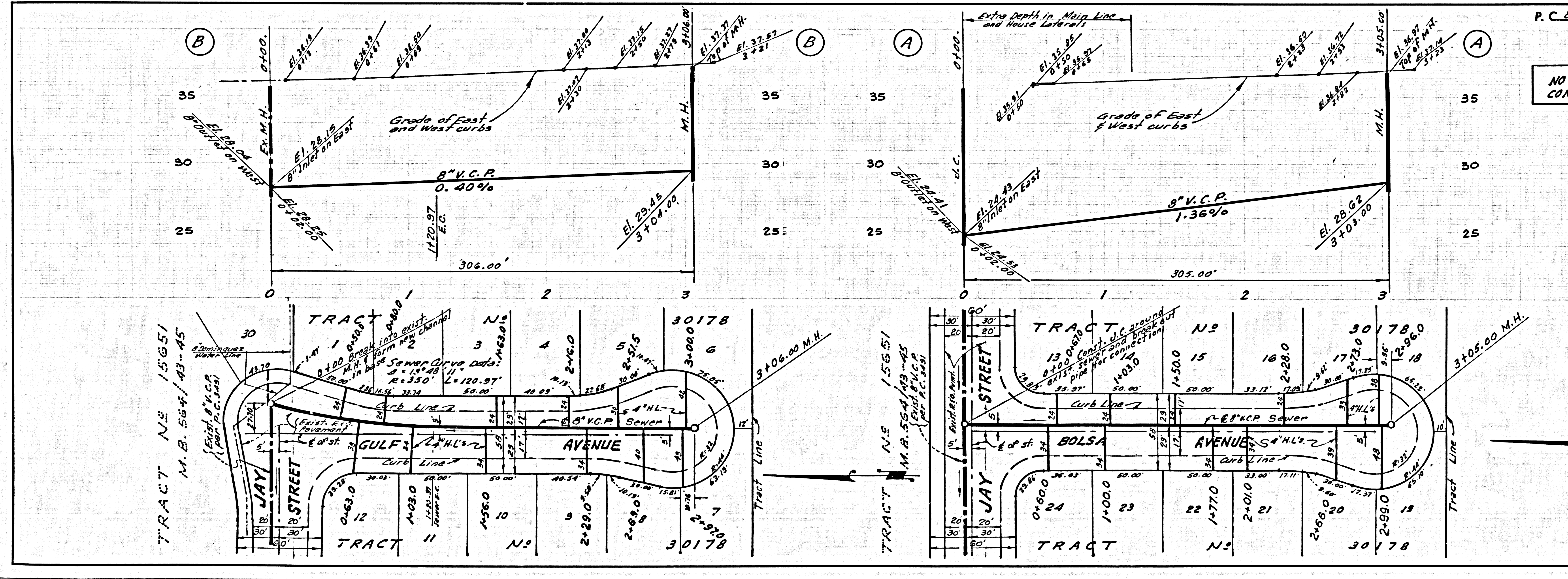
NOTE: LOT 24 IS SERVED BY EXISTING HOUSE LATERALS ON MAIN ST. - TRUNK SEWER NO. 81

COLLECT CHARGES AS INDICATED

NO CONNECTIONS FOR THE DISPOSAL OF INDUSTRIAL WASTES SHALL BE MADE TO SEWERS SHOWN ON THESE DRAWINGS WITHOUT WRITTEN PERMISSION FROM THE CHIEF ENGINEER AND GENERAL MANAGER OF THE COUNTY SANITATION DISTRICTS.

CITY OF CARSON, CALIFORNIA
 JOHN A. LAMBIE, CITY ENGINEER
 J. D. PARKHURST, CHIEF ENGINEER
 CO. SAN. DIST. NO. 12.05
 APPROVED BY: *Robert J. ...* Regional Engineer
 APPROVED BY: *E.L. Pearson* Office Engineer

CHECKED BY: *Edward J. Volery* E-19-C-8
 REG. C. E. NO. 10652



P. C. 8024 PAGE 2

NO CHARGE FOR CONNECTIONS

40447