

B.M. 86.1065 ELEV. 237.824
 L&I IN E. END CONC. HEADNALL @
 S.W. COR. VALLEY BLVD. AND SIXTH
 AVE. C/L INT.
 PUENTE QUAD. 19 65 ADJ.

THE FOLLOWING COUNTY SANITATION DISTRICTS
 STANDARDS APPLY TO THIS PROJECT
 BRICK MANHOLE ----- 50 801
 MANHOLE FRAME AND COVER ----- 50 807

LA PUENTE BLDG. DIST. NO. 2

PROFILE, ALIGNMENT AND GRADE OF P.C. 8027
 SANITARY SEWERS PAGE 1
 CONSTRUCTED IN
 SIXTH AVENUE

PRIVATE CONTRACT NO. 8027

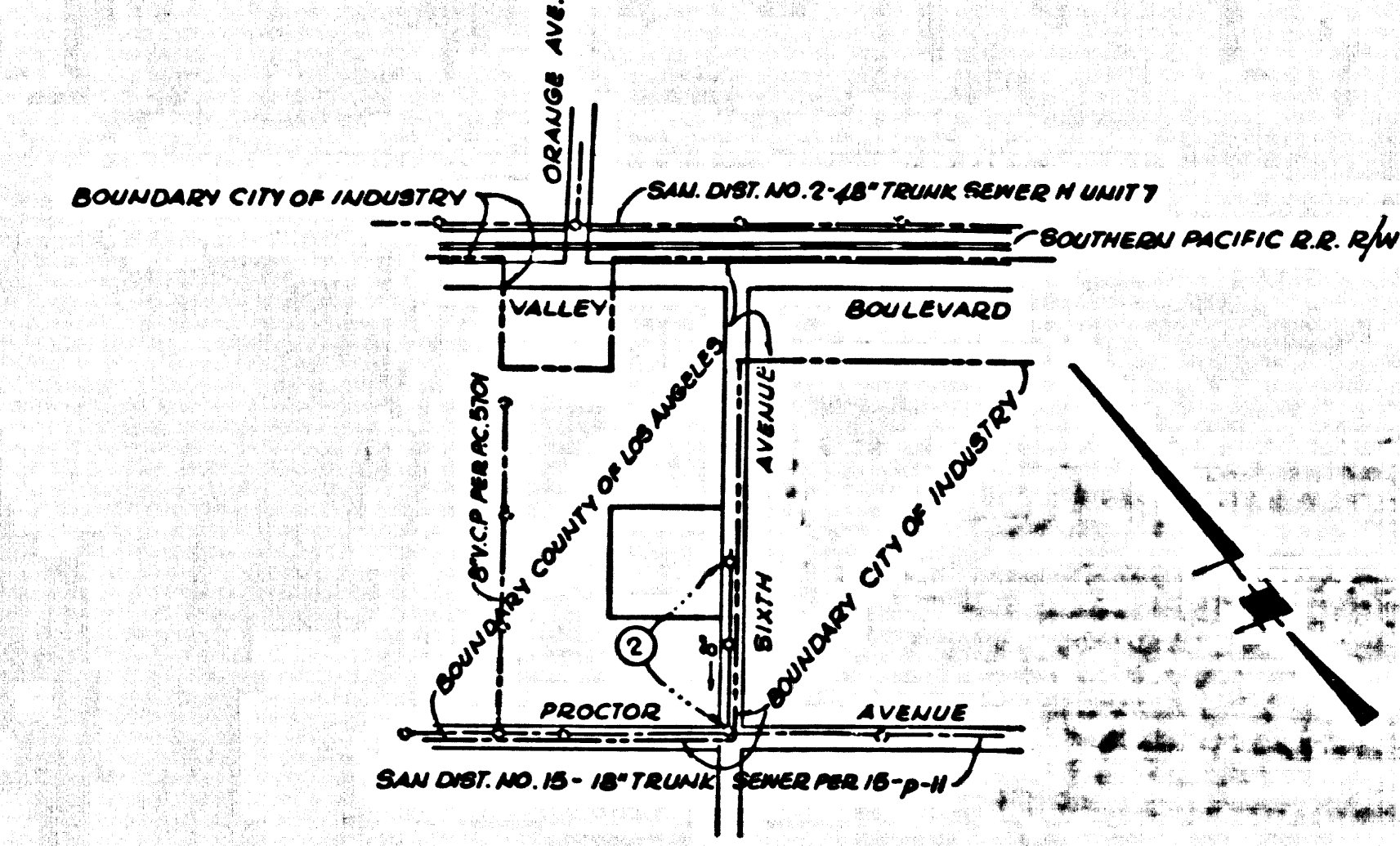
W.S. 37
 1 SHEET 2 PAGES
 SCALE: VERT. 1"=4' HORIZ. 1"=40'

FEBRUARY, 1968

PREPARED IN THE OFFICES OF
 NATIONAL ENGINEERING CO.
 13722 E. ABBEY ST., INDUSTRY, CALIF.
 REG. C. E. NO. 5828

FOR LEGEND SEE PLAN NO. S-1

- NOTES:
1. PROFILE STAKES ON THE PROPERTY LINE OR PROPERTY LINES PRODUCED AT RIGHT ANGLES TO THE SEWER LINE AT THE CENTER LINE OF EACH MANHOLE.
 2. NO REPRESENTATIVE OF THE COUNTY ENGINEER WILL SURVEY OR LAY OUT ANY PORTION OF THE WORK.
 3. THE PRIVATE ENGINEER SHALL FURNISH THE COUNTY ENGINEER WITH GRADE SHEETS AND STATIONING FOR ALL HOUSE LATERALS AND "T" BRANCHES AND SHALL PROVIDE STAKES FOR THEM AT THESE PROPER LOCATIONS WITH STATIONING PLAINLY MARKED. ALL HOUSE LATERALS SHALL BE CONSTRUCTED IN A STRAIGHT ALIGNMENT AT RIGHT ANGLES FROM THE MAIN LINE SEWER EXCEPT AS SHOWN ON THE PLANS. HOUSE LATERALS FROM CHIMNEYS SHALL NOT HAVE AN ANGLE OF LESS THAN 45° WITH THE MAIN LINE SEWER. ANY CHANGE IN ALIGNMENT SHALL BE REQUESTED BY WRITING BY THE PRIVATE ENGINEER.
 4. THE PRIVATE ENGINEER SHALL FURNISH THE HOUSE LATERAL DEPTH AT THE PROPERTY LINE SHOW THE TOP OF CURB ELEVATION FOR EACH HOUSE LATERAL ON THE GRADE SHEET.
 5. NO REVISIONS SHALL BE MADE IN THESE PLANS WITHOUT THE APPROVAL OF THE COUNTY ENGINEER.
 6. THE CONTRACTOR SHALL NOTIFY THE CONSTRUCTION DIVISION BY TELEPHONE, MADISON 9-8747, LIT. 81581, AT LEAST TWENTY-FOUR HOURS BEFORE STARTING ANY WORK UNDER THIS CONTRACT.
 7. ALL STRUCTURES SHALL BE EITHER BRICK MANHOLES PER 50-801 OR PRECAST CONCRETE MANHOLES PER 50-805 OR 50-806 EXCEPT AS NOTED.
 8. "T" OR "Y" BRANCHES MAY BE USED FOR CONNECTIONS TO MAIN LINE SEWERS EXCEPT AS NOTED.
 9. MANHOLE TOPS IN UNIMPROVED RIGHTS-OF-WAY TO BE LEVEL WITH FINISHED GRADE.
 10. USE EXTRA STRENGTH PIPE ALL PIPE IS STANDARD STIFF.
 11. VITRIFIED CLAY PIPE JOINTS SHALL BE TYPE "D"; 12" 1" PER STD. SPEC. SEC. 208-2.
 12. IF A POWER POLE IS WITHIN THREE FEET OF THE SEWER, THE SEWER SHALL BE ENCASED PER 5-23, TWO FEET ON EACH SIDE FROM THE POINT OF INTERFERENCE.
 13. IF DURING THE COURSE OF CONSTRUCTION IT IS DETERMINED THAT THERE IS LESS THAN FOUR FEET OF COVER OVER THE TOP OF A MAIN LINE OF HOUSE LATERAL V.C.P. SEWER WHICH IS NOT INDICATED ON THE PLANS, THE PIPE SHALL BE ENCASED PER 5-23, UNLESS OTHERWISE APPROVED BY THE COUNTY ENGINEER.
 14. HOUSE LATERALS TO BE CONSTRUCTED WITH 1/4" D/S PER FT. TO PROPERTY LINES.
 15. REPAIRS ALL TRENCHES WITHIN PAVED AREAS TO MEET L.A. COUNTY ROAD DEPT. OR CALIFORNIA STATE HIGHWAY REQUIREMENTS BY ACCORDANCE WITH PERMITS.
 16. SEWERS TO BE TESTED FOR LEAKAGE PER SEC. 802-2.5.7 STANDARD SPECIFICATIONS.
 17. ALL STATE AND LOCAL TRENCH SAFETY ORDERS WILL BE STRICTLY ENFORCED.
 18. SPECIAL BACKFILL DESIGNATED AREAS:
 (a) BACKFILL TRENCH AND REPLACE OTHER EARTH REMOVED SOAS TO ACHIEVE THE NATURAL OR FINISH GRADIES AND SLOPES SHOWN ON THE GRADING PLAN APPROVED FOR THIS TRACT BY THE BUILDING AND SAFETY DIVISION.
 (b) ALL BACKFILL AND EARTH REPLACED SHALL BE COMPACTED TO A MINIMUM OF 90% OF MAXIMUM DENSITY PER A.S.T.M. STANDARD METHOD OF TEST D 998-57 AS MODIFIED. ACCEPTABLE CERTIFICATION OF SUCH COMPACTION SHALL BE SUBMITTED TO THE CONSTRUCTION DIVISION.
 (c) ALL JOINTS BETWEEN CAST IRON PIPE AND VITRIFIED CLAY PIPE SHALL BE MADE WITH A RUBBER SLEEVE JOINT, TYPE "C" OR "D" (WITH BUSHING IF NECESSARY) PER STANDARD SPECIFICATIONS, SECTION 208-2.



INDEX MAP
 SCALE: 1"=600'
 P.C. 8027

County Sanitation Districts shall be notified prior to the following so that required inspection can be made (Phone):
 (1) Commencement of construction of manholes on District Trunk sewer.
 (2) Breaking into existing manhole on District Trunk sewer.
 (3) Core-drilling District Trunk sewer.
 (4) Installation of house laterals on District Trunk sewer.
 (5) Acceptance of the project.

NO CONNECTIONS FOR THE DISPOSAL OF INDUSTRIAL WASTES SHALL BE MADE TO SEWERS SHOWN ON THESE DRAWINGS WITHOUT WRITTEN PERMISSION FROM THE CHIEF ENGINEER AND GENERAL MANAGER OF THE COUNTY SANITATION DISTRICTS.

COLLECT CHARGES AS INDICATED

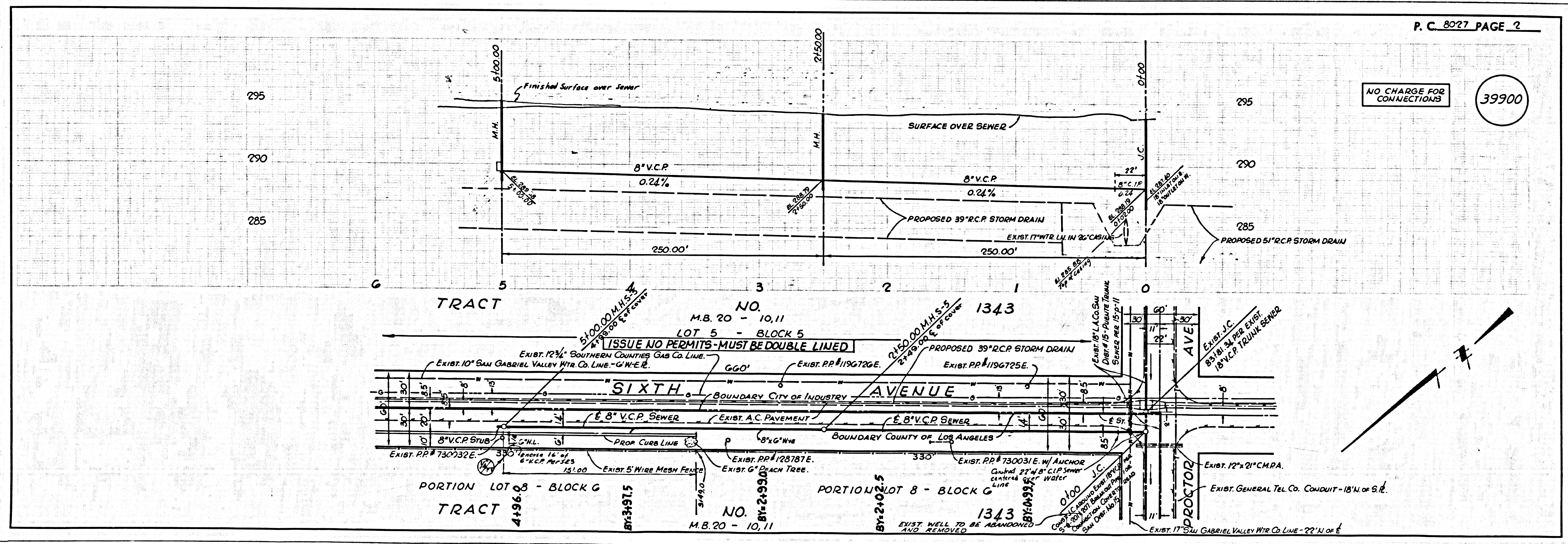
THE FOLLOWING COUNTY ENGINEER STANDARD PLANS APPLY TO THIS PROJECT

LEGEND	8-1
MINIMUM EXCAVATION SAFETY REQUIREMENTS	8-2
BRICK MANHOLE	8-3
NON-REINFORCED PRECAST CONCRETE MANHOLE	8-4
REINFORCED PRECAST CONCRETE MANHOLE	8-5
MANHOLE FRAME AND COVER	8-6
MANHOLE STEP	8-7
BEDDING FOR SEWER PIPE	8-8
GRADING AND ENCASUREMENT	8-9
WYE OR TEE SUBMITTAL	8-10
ALLOWABLE TRENCH WIDTHS	8-11

COUNTY OF LOS ANGELES, CALIFORNIA
 JOHN A. LAMBIE, COUNTY ENGINEER
 J. D. PARKHURST, CHIEF ENGINEER
 CO. ENR. REG. NO. 15
 APPROVED BY: [Signature] SAN DIMAS REGIONAL ENGINEER
 APPROVED BY: [Signature] OFFICE ENGINEER

CHECKED BY: [Signature] REG. C.E. NO. 10223

J.N. 0369.01



NO CHARGE FOR CONNECTIONS

39900

P.C. 8027 PAGE 2