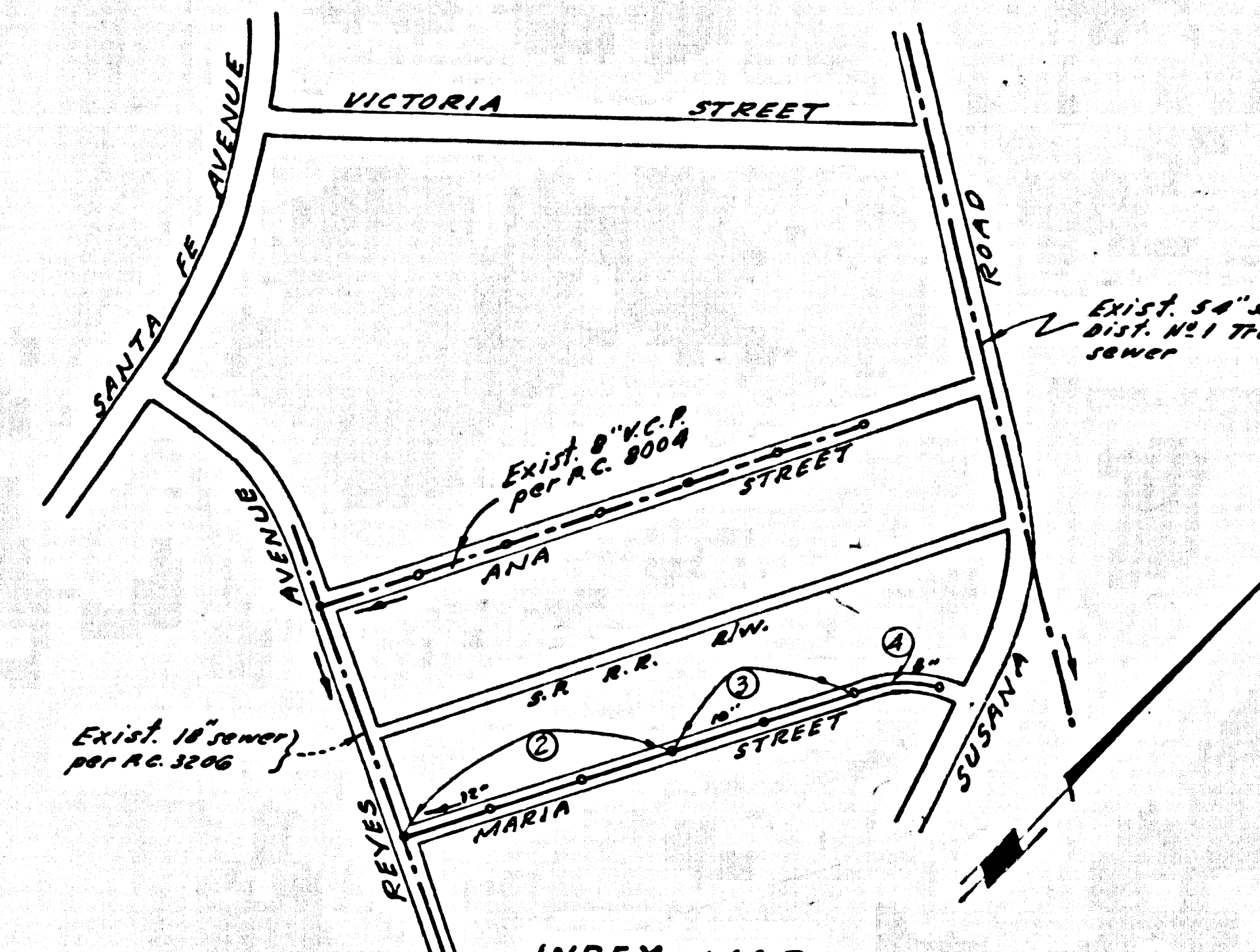


B.M. BY 2379 ELEV. 62.969  
 A.C. Brass cap 5 ft. 7 inch angle point  
 wingman 2 ft. corner bridge 18 1/2 in.  
 diameter set over Concha Creek 12 ft. 4  
 in. & 500 ft. S. Arroyo Blvd. (L.A. 433)  
 Bellflower QUAD. 1965



INDEX MAP  
 P.C. 8028  
 Scale 1"=600'

County Sanitation Districts shall be notified prior to the following so that required inspection can be made (Phone N.E. 63077)

- (1) Commencement of construction of manhole on District sewer.
- (2) Breaking into existing manhole on District trunk sewer.
- (3) Core existing District trunk sewer.
- (4) Construction of house connections to District trunk sewer.
- (5) Acceptance of the project.

NO CONNECTIONS FOR THE DISPOSAL OF INDUSTRIAL WASTES SHALL BE MADE TO SEWERS SHOWN ON THESE DRAWINGS WITHOUT WRITTEN PERMISSION FROM THE CHIEF ENGINEER AND GENERAL MANAGER OF THE COUNTY SANITATION DISTRICTS.

THE FOLLOWING COUNTY ENGINEER STANDARD PLANS APPLY TO THIS PROJECT

LEGEND	
MINIMUM EXCAVATION	5-1
SAFETY REQUIREMENTS	5-2
BRICK MANHOLE	5-3
NON REINFORCED PRECAST CONCRETE MANHOLE	5-5
REINFORCED PRECAST CONCRETE MANHOLE	5-6
MANHOLE FRAME & COVER	5-15
MANHOLE STEP	5-17
BEDDING FOR SEWER PIPE	5-21
GRADING AND ENCASEMENT	5-23
WYE OR TEE SUPPORT	5-26
ALLOWABLE TRENCH WIDTH	5-33

## LENNOX BLDG. DIST. NO. 7

- NOTES
1. PROVIDE STAKES ON THE PROPERTY LINE OR PROPERTY LINES PRODUCED AT RIGHT ANGLES TO THE SEWER LINE AT THE CENTER LINE OF EACH MANHOLE.
  2. NO REPRESENTATIVE OF THE COUNTY ENGINEER WILL SURVEY OR LAY OUT ANY PORTION OF THE WORK.
  3. THE PRIVATE ENGINEER SHALL FURNISH THE COUNTY ENGINEER WITH GRADE SHEETS AND STATIONING FOR ALL HOUSE LATERALS AND "T" BRANCHES AND SHALL PROVIDE STAKES FOR THEM AT THEIR PROPER LOCATIONS WITH STATIONING PLAINLY MARKED. ALL HOUSE LATERALS SHALL BE CONSTRUCTED IN A STRAIGHT ALIGNMENT AT RIGHT ANGLES FROM THE MAIN LINE SEWER EXCEPT AS SHOWN ON THE PLANS. HOUSE LATERALS FROM CHIMNEYS SHALL NOT HAVE AN ANGLE OF LESS THAN 45° WITH THE MAIN LINE SEWER. ANY CHANGE IN ALIGNMENT SHALL BE REQUESTED IN WRITING BY THE PRIVATE ENGINEER.
  4. THE PRIVATE ENGINEER SHALL FURNISH THE HOUSE LATERAL DEPTH AT THE PROPERTY LINE BELOW THE TOP OF CURB ELEVATION FOR EACH HOUSE LATERAL ON THE GRADE SHEET.
  5. NO REVISIONS SHALL BE MADE IN THESE PLANS WITHOUT THE APPROVAL OF THE COUNTY ENGINEER.
  6. THE CONTRACTOR SHALL NOTIFY THE CONSTRUCTION DIVISION BY TELEPHONE, MARSHEN 9-22, EXT. 8181, AT LEAST TWENTY-FOUR HOURS BEFORE STARTING ANY WORK UNDER THIS CONTRACT.
  7. MANHOLES SHALL BE BRICK SEWER STRUCTURES PER S.E. OR PRECAST CONCRETE MANHOLES PER S-S-R-S-R EXCEPT AS NOTED.
  8. USE STANDARD MANHOLE FRAMES AND COVERS, S-1, EXCEPT AS NOTED.
  9. MANHOLES TOPS IN UNIMPROVED RIGHTS-OF-WAY TO BE SIX INCHES ABOVE FINISHED GRADE.
  10. USE EXTRA STRENGTH PIPE. ALL PIPE IS STANDARD DEPTH EXCEPT AS NOTED.
  11. DISTRICT CLAY PIPE SHALL BE 7" OR 8" PER STD. SPEC. SEC. 204-B.
  12. IF A POWER POLE IS WITHIN THREE FEET OF THE SEWER, THE SEWER SHALL BE ENCASED, PER S-25, TWO FEET ON EACH SIDE FROM THE POINT OF INTERFERENCE.
  13. IF DURING THE COURSE OF CONSTRUCTION IT IS DETERMINED THAT THERE IS LESS THAN FOUR FEET OF COVER OVER THE TOP OF A MAIN LINE OR HOUSE LATERAL V.C.P. SEWER WHICH IS NOT INDICATED ON THE PLANS, THE PIPE SHALL BE ENCASED PER S-25, UNLESS OTHERWISE APPROVED BY THE COUNTY ENGINEER.
  14. HOUSE LATERALS TO BE CONSTRUCTED WITH INVERTS AT PROPERTY LINE 6 FEET BELOW CURB GRADE EXCEPT AS NOTED.
  15. RESURFACE ALL TRENCHES WITHIN PAVED AREAS TO MEET L.A. COUNTY ROAD DEPT. OR CALIFORNIA STATE HIGHWAY REQUIREMENTS IN ACCORDANCE WITH PERMITS.
  16. JOINTS TO BE TESTED PER SECTION 204-B-2, STANDARD SPECIFICATIONS.
  17. ALL STATE AND LOCAL TRENCH SAFETY ORDERS WILL BE STRICTLY ENFORCED.
  18. All joints between cast iron pipe and vitrified clay pipe shall be made with a rubber slope joint type "C" or "D" (with bulking if necessary) per Standard Specifications, Section 204-B.

NOTE:  
 ISSUE NO HOUSE CONNECTION PERMITS UNTIL STREET IS DEDICATED.

COLLECT CHARGES AS INDICATED

NOTICE TO CONTRACTOR  
 The existence and location of any underground utility pipes or structures shown on these plans are obtained by a search of the available records. To the best of my knowledge there are no existing utilities except as shown on these plans. The contractor is required to take due precautionary measures to protect the utility lines shown and any other lines not of record or not shown on these plans.

PROFILE, ALIGNMENT AND GRADE OF  
**SANITARY SEWERS** PAGE 1

TO BE CONSTRUCTED IN  
**MARIA STREET**  
 PRIVATE CONTRACT NO. 8028

W.S. 32  
 2 SHEETS, 4 PAGES

SCALE: VERT. 1"=4'  
 HORIZ. 1"=40' FEB. 1968

PREPARED IN THE OFFICES OF  
**E. L. PEARSON AND ASSOCIATES**

By: *Paul H. Jones* 2-20-68  
 REG. C.E. NO. 15857

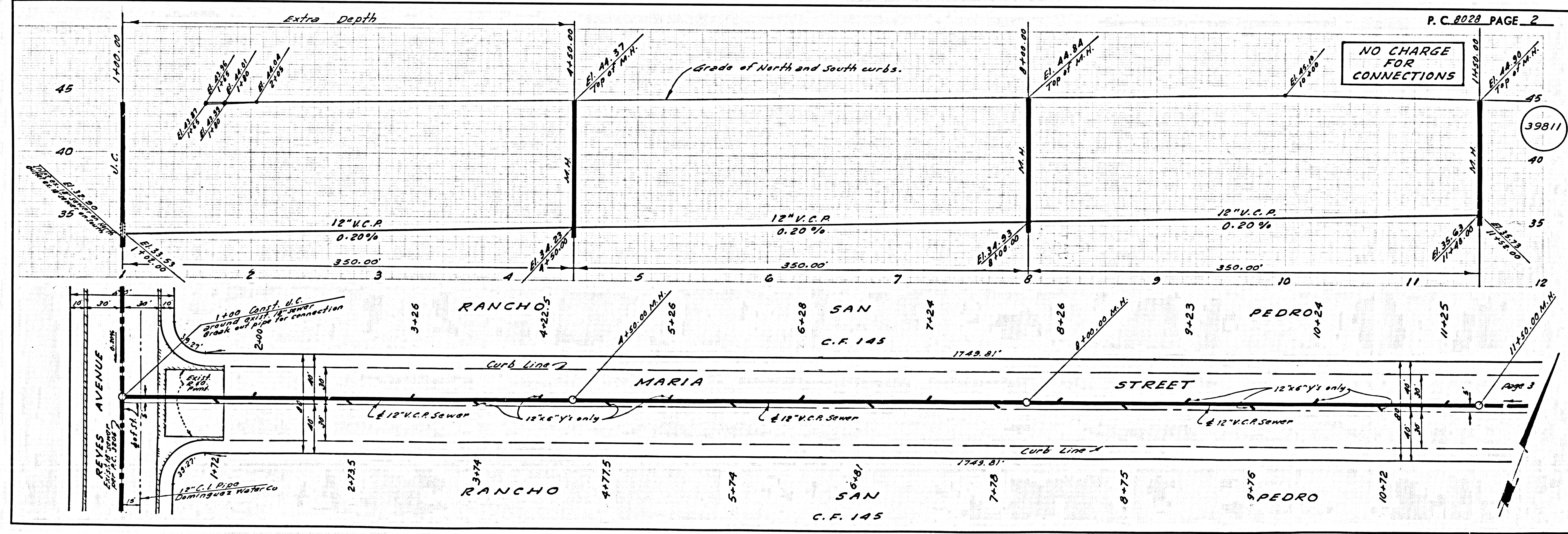
FOR LEGEND SEE PLAN NO. S-1

NOTE:  
 GRADES TO WHICH THE IMPROVEMENT IS TO BE CONSTRUCTED ARE SHOWN ON PLANS AND PROFILE. GRADE POINTS FOR TOP OF CURB, CENTER LINE OF STREETS, OR CENTER LINE OF ALLEYS ARE SHOWN BY CIRCLES ON PROFILE. AT ALL POINTS BETWEEN DESIGNATED POINTS THE GRADE SHALL BE ESTABLISHED SO AS TO CONFORM TO A STRAIGHT LINE DRAWN BETWEEN SAID DESIGNATED POINTS. ELEVATIONS ARE IN FEET ABOVE U.S.C. & G.S. SEA LEVEL DATUM OF 1929. THIS DRAWING AND THE DATA HEREON ARE HEREBY MADE A PART OF THE SPECIFICATIONS. WORK SHALL BE CONSTRUCTED ACCORDING TO STANDARD SPECIFICATIONS FOR PUBLIC WORKS CONSTRUCTION AND COUNTY ENGINEER SPECIAL SPECIFICATIONS AND SHALL BE OBSERVED AND SUPERVISED BY THE PRESENCE OF COUNTY ENGINEER. BEFORE WORK CAN BE STARTED, THE CONTRACTOR MUST OBTAIN A PERMIT TO EXCAVATE IN COUNTY STREETS FROM THE L.A. COUNTY ROAD DEPT., DISTRICT OFFICE NO. 10 AND PAY A FEE TO THE COUNTY ENGINEER, ROOM 800, COUNTY ENGINEER BUILDING, THE WEST SECOND STREET CITY PLAZA, LOS ANGELES, CALIFORNIA. APPROVAL OF THIS PLAN BY THE COUNTY OF LOS ANGELES DOES NOT CONSTITUTE A REPRESENTATION AS TO THE ACCURACY OF THE LOCATION OF OR THE EXISTENCE OR NON-EXISTENCE OF ANY UNDERGROUND UTILITY PIPE, OR STRUCTURE WITHIN THE LIMITS OF THIS PROJECT. THIS NOTE APPLIES TO ALL PAGES. IF WORK IS TO BE DONE IN A STATE HIGHWAY, A PERMIT MUST BE OBTAINED FROM THE STATE OF CALIFORNIA, DIVISION OF HIGHWAYS, 1200 SOUTH SPRING STREET, LOS ANGELES, CALIFORNIA.

COUNTY OF LOS ANGELES, CALIFORNIA  
 JOHN A. LAMBIE, COUNTY ENGINEER J. D. PARKHURST, CHIEF ENGINEER  
 CO. SAN. DIST. NO. 7  
 APPROVED BY: *Robert H. Miller* Regional Engineer APPROVED BY: *W. H. ...* OFFICE ENGINEER

CHECKED BY: *Edward J. ...* 4/16/68  
 REG. C.E. NO. 10653

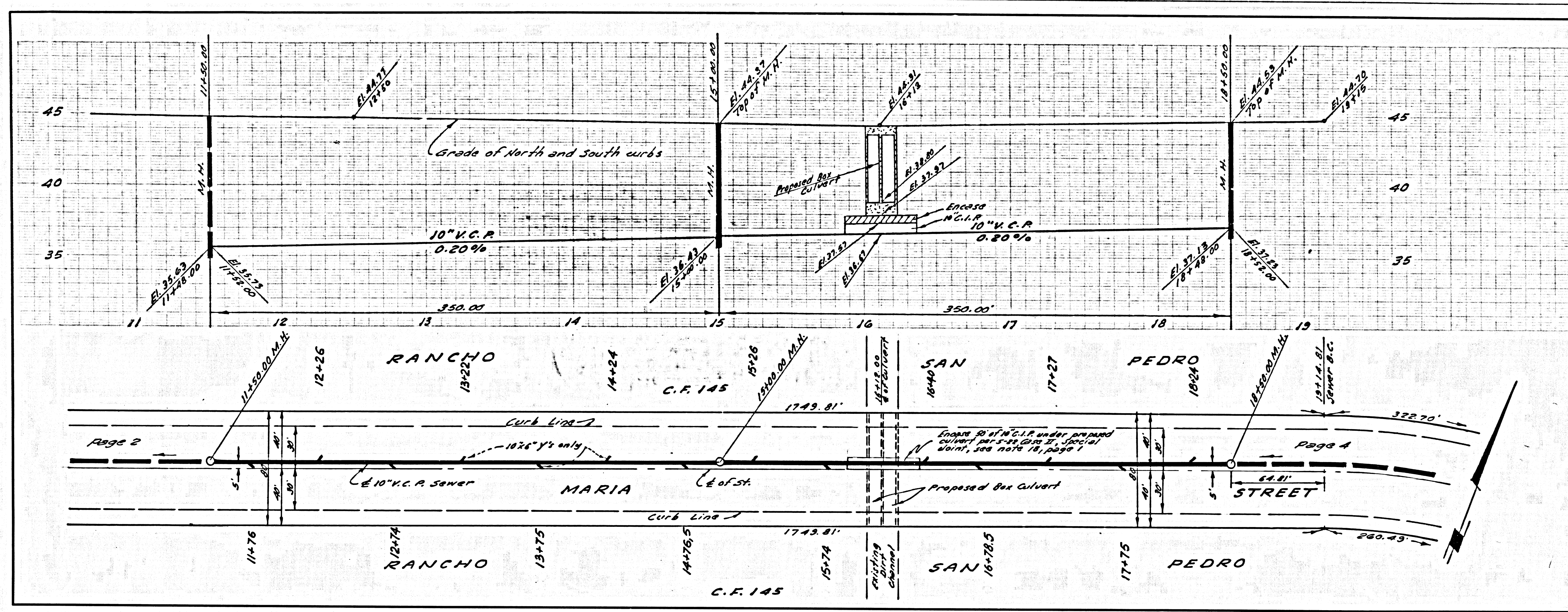
J.N. 0369.02





NO CHARGE FOR CONNECTIONS

39812



NO CHARGE FOR CONNECTIONS

39813

