

B.M. 86 2065 ELEV. 765.734  
 R.D.B.M. TAG IN CONC. BASE OF  
 FENCE POST 15 FT. S. OF GATE, 51 FT. W.  
 & BRCA CVAI. RD. 1/4 MI. N. CHAMONO BAR BL.  
 OTTERBEIN QUAD. 19 65

THE FOLLOWING COUNTY ENGINEER'S STANDARD PLANS  
 APPLY TO THIS PROJECT.

LEGEND  
 MINIMUM EXCAVATION SAFETY REQUIREMENTS  
 DICK MANHOLES  
 NON REINFORCED PRECAST CONCRETE MANHOLES  
 REINFORCED PRECAST CONCRETE MANHOLES  
 MANHOLE FRAME AND COVER  
 MANHOLE STEP  
 DRESSING AND GROUND FINE  
 LEADING AND ENCASMENT  
 W/VE OR TIE SUPPORT  
 ALLOWABLE TRENCH WIDTHS

# DOUBLE SCALE SAN DIMAS BLDG. DIST. NO. 10

PROFILE, ALIGNMENT AND GRADE OF  
**SANITARY SEWERS** P.C. 8034  
 PAGE 1  
 CONSTRUCTED IN

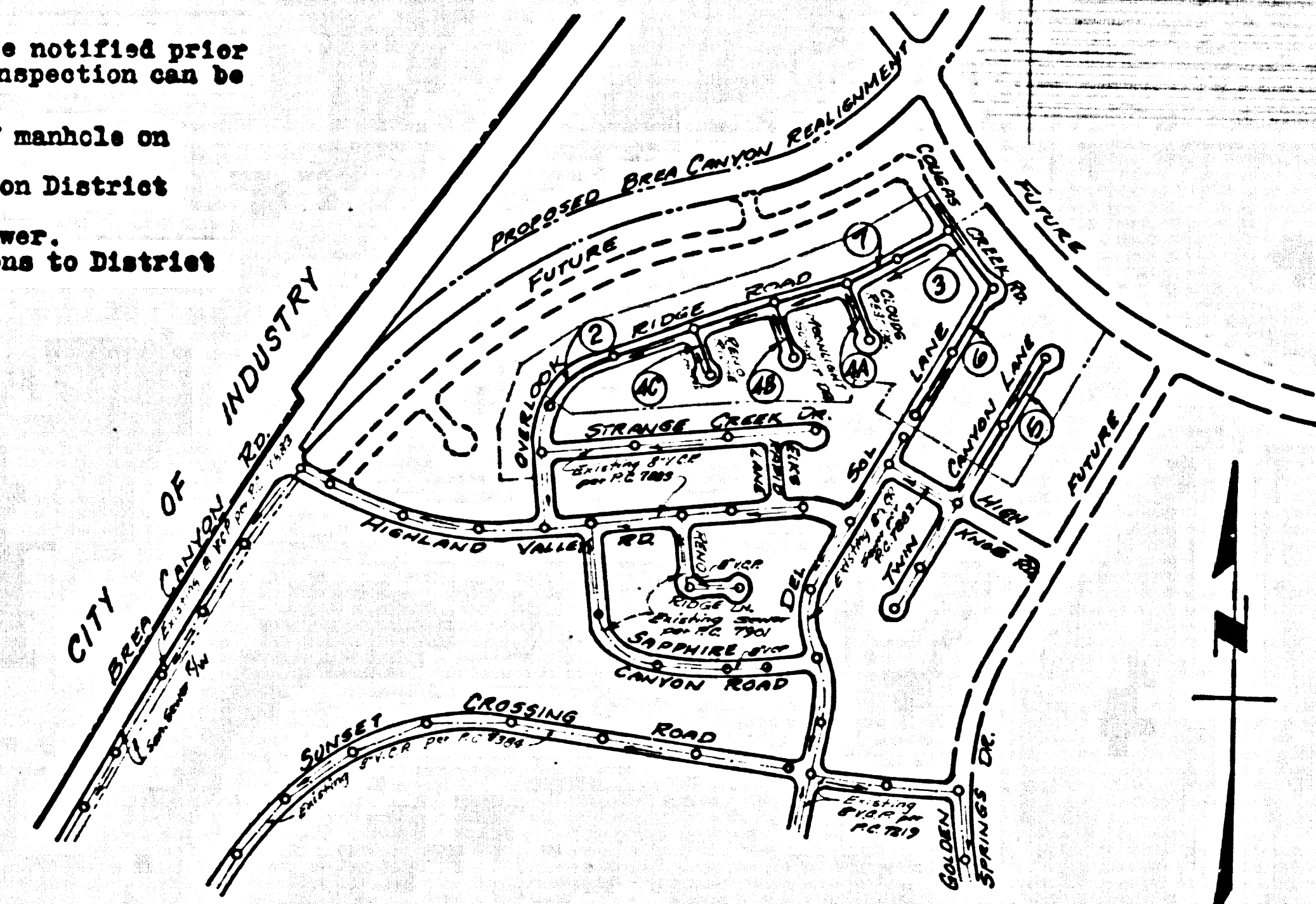
**TRACT NO. 27536**  
**PRIVATE CONTRACT NO. 8034**

W.S. 39  
 4 SHEETS, 7 PAGES  
 SCALE: HORIZ. 1"=40' VERT. 1"=4'  
 FEBRUARY, 1968  
 PREPARED IN THE OFFICE OF  
**TRI-STATE ENGINEERING CO.**  
 BY *Thomas J. Sullivan*  
 REG. C.E. NO. 12827

39991

County Sanitation Districts shall be notified prior  
 to the following so that required inspection can be  
 made (Phone 427-1025)

- (1) Commencement of construction of manhole on District trunk sewer.
- (2) Breaking into existing manhole on District trunk sewer.
- (3) Core drilling District trunk sewer.
- (4) Construction of house connections to District trunk sewer.
- (5) Acceptance of the project.



NO CONNECTIONS FOR THE DISPOSAL OF  
 INDUSTRIAL WASTES SHALL BE MADE TO  
 SEWERS SHOWN ON THESE DRAWINGS  
 WITHOUT WRITTEN PERMISSION FROM THE  
 CHIEF ENGINEER AND GENERAL MANAGER  
 OF THE COUNTY SANITATION DISTRICTS.

LOTS 60, 61, 62, 63 & 64  
 ARE SERVED BY P.C. 7883  
 ON OVERLOOK RIDGE RD.  
 PAGE 9A. ISSUE NO HOUSE  
 CONNECTION PERMITS UNTIL  
 TR. NO. 27536 IS RECORDED AND  
 P.C. NO. 8034 IS ACCEPTED.

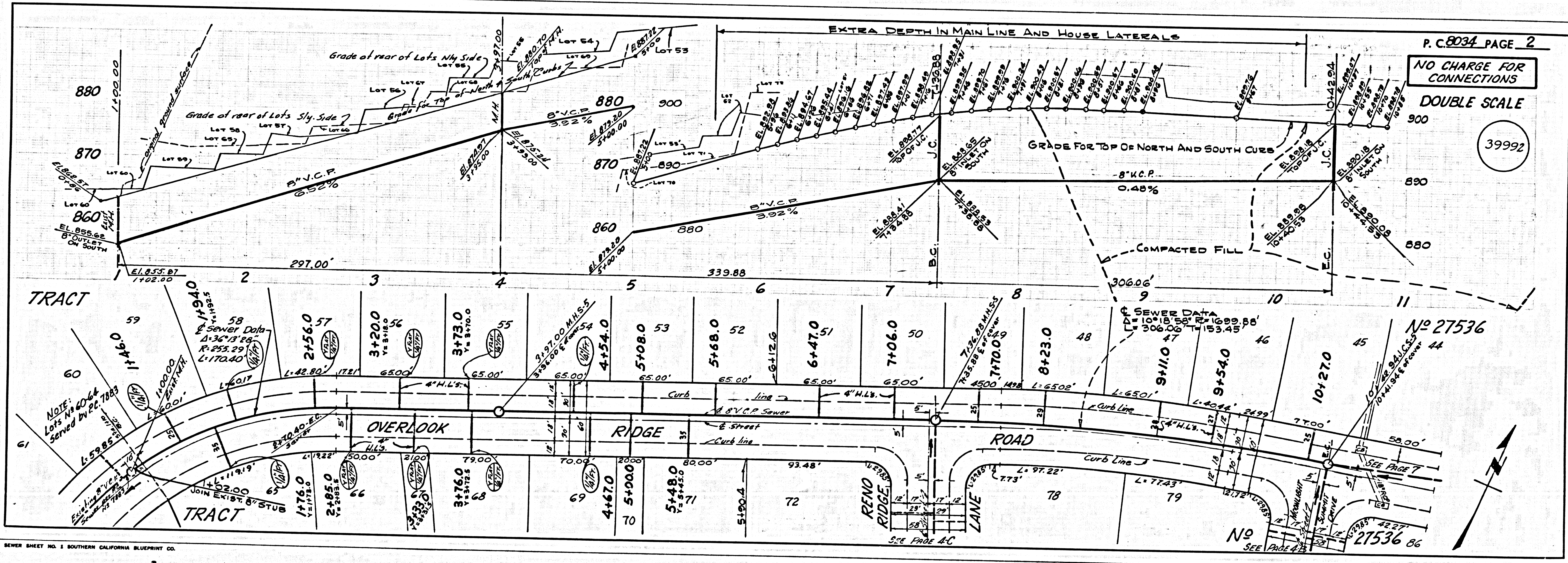
**COLLECT CHARGES  
 AS INDICATED**

NOTE:  
 GRADE TO WHICH PIPE IMPROVEMENT IS TO BE CONSTRUCTED ARE SHOWN ON PLANS AND PROFILES. GRADE POINTS FOR TOP OF  
 CURBS, CENTER LINE OF STREETS, OR CENTER LINE OF ALLEYS ARE SHOWN BY CIRCLES ON PLANS AND BY TRIANGLES BETWEEN DESIGNATED  
 ELEVATIONS ARE IN FEET ABOVE U.S.C. & G.S. SEA LEVEL, DATUM OF 1929.  
 THE SEWERING AND THE DATA HEREON ARE HEREBY MADE A PART OF THE SPECIFICATIONS.  
 WORK SHALL BE CONSTRUCTED ACCORDING TO STANDARD SPECIFICATIONS FOR SANITARY SEWERAGE AND SEWERAGE SYSTEMS  
 PREPARED BY THE CALIFORNIA STATE BOARD OF STANDARD SPECIFICATIONS FOR CONSTRUCTION, 1967 EDITION, AS AMENDED.  
 BEFORE WORK CAN BE STARTED, THE CONTRACTOR MUST OBTAIN A PERMIT TO EXCAVATE IN COUNTY STREETS FROM THE L.A. COUNTY  
 ROAD DEPT., DISTRICT OFFICE NO. 1, 100 SOUTH SPRING STREET, LOS ANGELES, CALIFORNIA, AND PAY A FEE TO THE COUNTY ENGINEER, ROOM 300, COUNTY ENGINEERING BUILDING,  
 100 WEST SECOND STREET, LOS ANGELES, CALIFORNIA.  
 APPROVAL OF THIS PLAN BY THE COUNTY OF LOS ANGELES DOES NOT CONSTITUTE A REPRESENTATION AS TO THE ACCURACY OF THE  
 LOCATION OF OR THE EXISTENCE OR NON-EXISTENCE OF ANY UNDERGROUND UTILITY PIPE, OR STRUCTURE WITHIN THE LIMITS OF THE  
 PROJECT. THIS NOTICE APPLIES TO ALL PAGES.  
 IF WORK IS TO BE DONE ON A STATE HIGHWAY, A PERMIT MUST BE OBTAINED FROM THE STATE OF CALIFORNIA, DIVISION OF HIGHWAYS,  
 120 SOUTH SPRING STREET, LOS ANGELES, CALIFORNIA.

COUNTY OF LOS ANGELES, CALIFORNIA  
 JOHN A. LAMBIE, COUNTY ENGINEER  
 J. D. PARKHURST, CHIEF ENGINEER  
 CO. SAN. DIST. NO. 10  
 APPROVED BY *John A. Lambie*  
 San Dimas District Engineer  
 APPROVED BY *J. D. Parkhurst*  
 Chief Engineer

CHECKED BY *Thomas J. Sullivan*  
 REG. C.E. NO. 12827

J.N.0250.02



P.C. 8034 PAGE 2

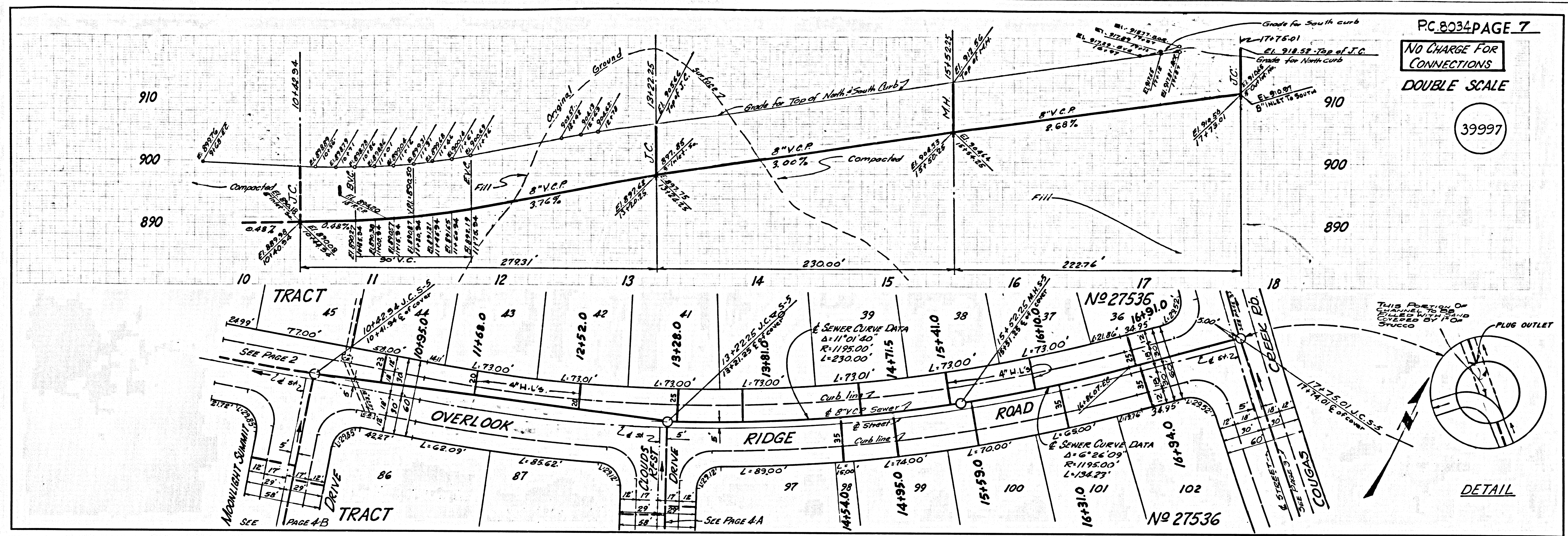
NO CHARGE FOR  
 CONNECTIONS

DOUBLE SCALE

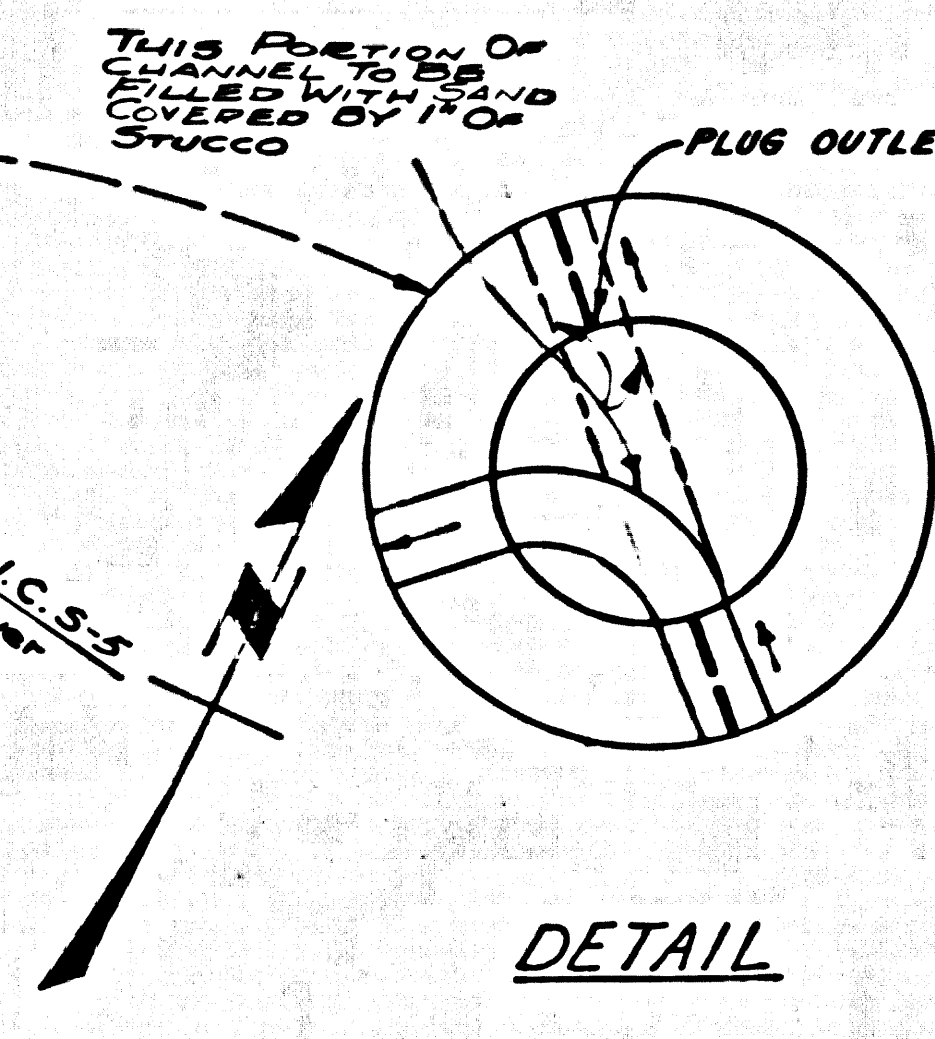
39992







PC 2034 PAGE 7  
 NO CHARGE FOR CONNECTIONS  
 DOUBLE SCALE  
 39997



PAGE