

B.M. 256 ELEV. 710.310
 L & B.N. in E. Edge Conc. Wk. 3 Ft from N. end
 Wk. 55 Ft S of Arrow Hwy. in front of
 Hse No 20144 375 Ft W of Banna Ave.
 San Dimas QUAD. 19 65

- THE FOLLOWING COUNTY ENGINEER STANDARD PLANS APPLY TO THIS PROJECT:
- 1. MINIMUM PUBLIC SAFETY REQUIREMENTS 5-1
 - 2. BRICK MANHOLE 5-2
 - 3. NON-REINFORCED PRECAST CONCRETE MANHOLE 5-3
 - 4. REINFORCED PRECAST CONCRETE MANHOLE 5-4
 - 5. MANHOLE FRAME AND COVER 5-5
 - 6. MANHOLE STEP 5-6
 - 7. BEDDING FOR SEWER PIPE 5-7
 - 8. GRADING AND SLOPE 5-8
 - 9. WYE OR TEE SUPPORT 5-9
 - 10. ALLOWABLE TRENCH WIDTH 5-10

SAN DIMAS BLDG. DIST. NO. 10

PROFILE ALIGNMENT AND GRADE OF
 SANITARY SEWERS P.C. 8033
 CONSTRUCTED IN PAGE 1

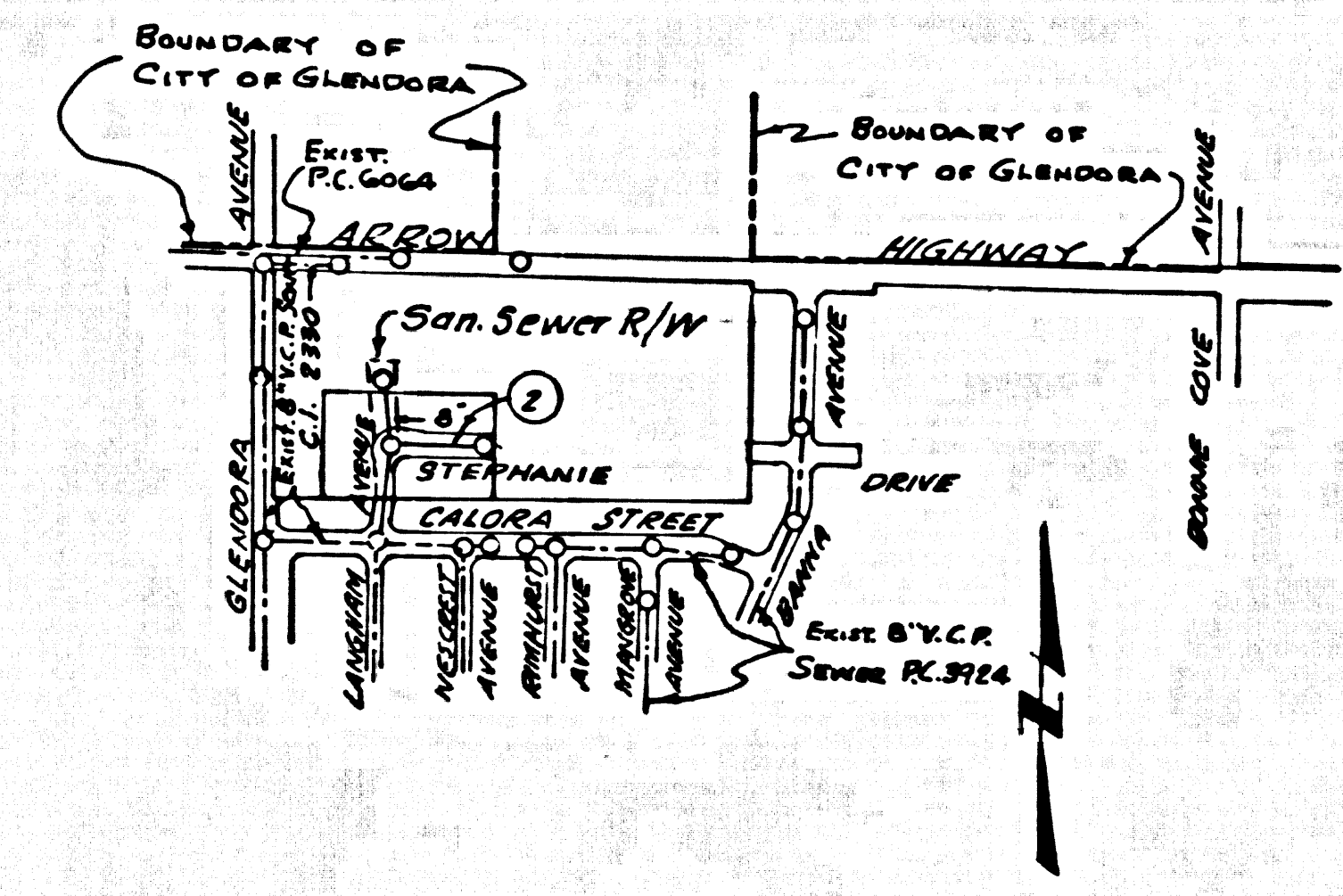
TRACT NO. 28967
 PRIVATE CONTRACT NO. 8035

W.S. 48 A-3
 1 SHEET OF 2 PAGES

SCALE: VERT. 1"=4' HORIZ. 1"=40'
 JANUARY, 1968
 PREPARED IN THE OFFICES OF
 HAROLD L. JOHNSON ENGINEERING

40421

REG. C. E. NO. 7668
 FOR LEGEND SEE PLAN NO. S-1



INDEX MAP
 SCALE: 1:600'
 P.C. 8035

- County Sanitation Districts shall be notified prior to the following so that required inspection can be made (Phone EA 71022):
- (1) Commencement of construction of manhole on District trunk sewer.
 - (2) Breaking into existing manholes on District trunk sewer.
 - (3) City drilling District trunk sewer.
 - (4) Construction of house connections to District trunk sewer.
 - (5) Acceptance of the project.

NO CONNECTIONS FOR THE DISPOSAL OF INDUSTRIAL WASTES SHALL BE MADE TO SEWERS SHOWN ON THESE DRAWINGS WITHOUT WRITTEN PERMISSION FROM THE CHIEF ENGINEER AND GENERAL MANAGER OF THE COUNTY SANITATION DISTRICTS.

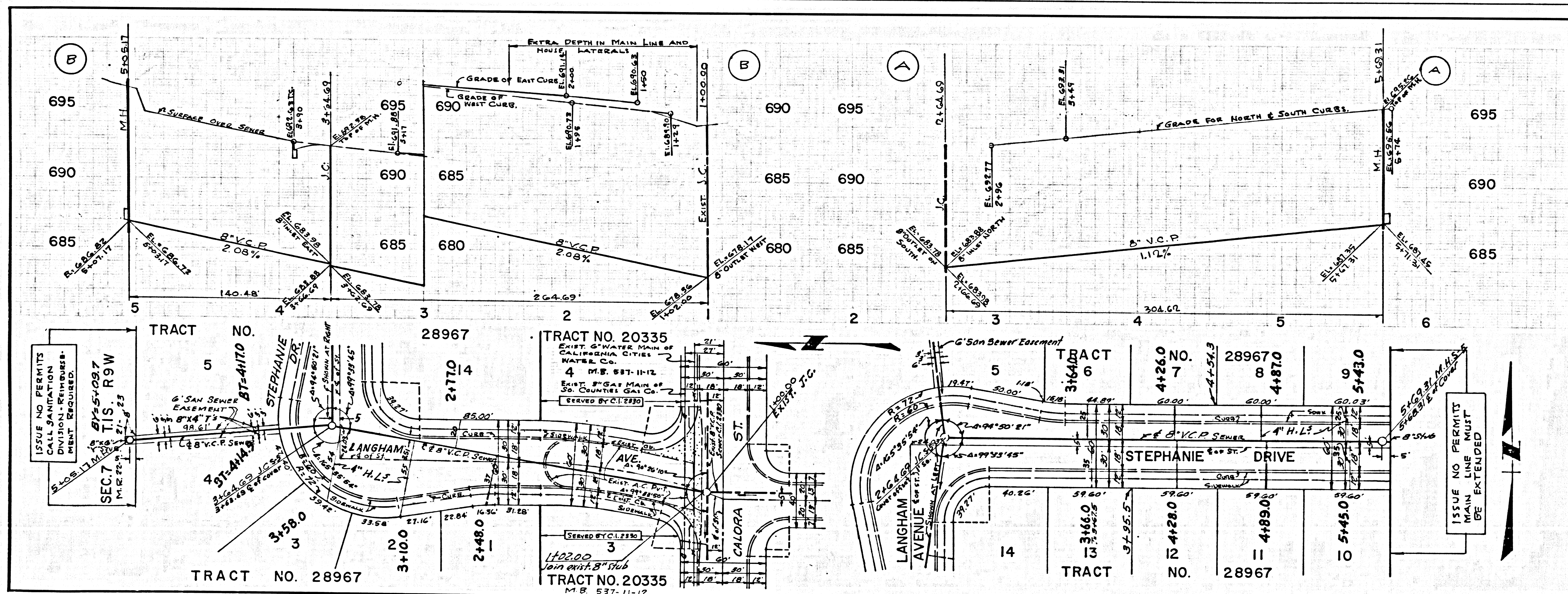
COLLECT CHARGES AS INDICATED

NOTE: GRADES TO WHICH THIS IMPROVEMENT IS TO BE CONSTRUCTED ARE SHOWN ON PLANS AND PROFILES. GRADE POINTS FOR TOP OF CURB, CENTER LINE OF STREETS, OR CENTER LINE OF ALLEYS ARE SHOWN BY CIRCLES ON PROFILES AT ALL POINTS BETWEEN DESIGNATED POINTS. THE GRADE SHALL BE ESTABLISHED SO AS TO CONFORM TO A STRAIGHT LINE DRAWN BETWEEN SAID DESIGNATED POINTS. ELEVATIONS ARE IN FEET ABOVE U.S.C. & G.S. SEA LEVEL DATUM OF 1929. THE DRAWING AND THE DATA HEREON ARE HEREBY MADE A PART OF THE SPECIFICATIONS FOR PUBLIC WORKS CONSTRUCTION AND SHALL BE CONSIDERED ACCORDING TO THE STANDARD SPECIFICATIONS FOR PUBLIC WORKS CONSTRUCTION AND COUNTY ENGINEER SPECIAL PROVISIONS DATED FEBRUARY 1966. AS REVISER, AND SHALL BE PROSECUTED ONLY IN THE PRESENCE OF THE COUNTY ENGINEER. BEFORE WORK CAN BE STARTED, THE CONTRACTOR MUST OBTAIN A PERMIT TO EXCAVATE IN COUNTY STREETS FROM THE L.A. COUNTY ROAD DEPT., DISTRICT OFFICE NO. 10 AND PAY A FEE TO THE COUNTY ENGINEER, ROOM 330, COUNTY ENGINEERING BUILDING, 100 WEST SECOND STREET, LOS ANGELES, CALIF. 90012. APPROVAL OF THIS PLAN BY THE COUNTY OF LOS ANGELES DOES NOT CONSTITUTE A REPRESENTATION AS TO THE ACCURACY OF THE LOCATION OF OR THE EXISTENCE OF NON-EXISTENCE OF ANY UNDERGROUND UTILITY PIPE, OR STRUCTURE WITHIN THE LIMITS OF THIS PROJECT. THIS NOTE APPLIES TO ALL PAGES. IF WORK IS TO BE DONE IN A STATE HIGHWAY, A PERMIT MUST BE OBTAINED FROM THE STATE OF CALIFORNIA, DIVISION OF HIGHWAYS, 120 SOUTH SPRING STREET, LOS ANGELES, CALIFORNIA.

COUNTY OF LOS ANGELES, CALIFORNIA
 JOHN A. LAMBE, COUNTY ENGINEER J. D. PARKHURST, CHIEF ENGINEER
 CO. SAN. DIST. NO. 22
 APPROVED BY: *[Signature]* APPROVED BY: *[Signature]*
 SAN DIMAS REGIONAL ENGINEER OFFICE ENGINEER

CHECKED BY: *[Signature]* 6-21-68
 REG. C.E. NO. 10223

J.N. 0250.02



P.C. 8035 PAGE 2
 NO CHARGE FOR CONNECTION

40422

ISSUE NO PERMITS CALL SANITATION DIVISION-REIMBURSEMENT REQUIRED.
 SEC. 7 M.C. 11-11-12
 11-11-12

ISSUE NO PERMITS MAIN LINE MUST BE EXTENDED