

B.M. S.L. 642 ELEV. 1262.071
 Road Dept. B.M. Top No. Side Conf. base
 of NE. Cor. Edison High tension tower
 47 M. 375 W. 338' to Lyons Avenue
 and 30' E. Wiley Canyon Road.
 NEWHALL QUAD. 19 58

County Sanitation Districts shall be notified prior to the following so that required inspection can be made (Phone 607-1025)
 (1) Commencement of construction of manhole on District trunk sewer.
 (2) Breaking into existing manhole on District trunk sewer.
 (3) Core drilling District trunk sewer.
 (4) Construction of house connections to District trunk sewer.
 (5) Acceptance of the project.

LOTS SHOWN ON PAGE 2
 ISSUE NO HOUSE CONN. PERMITS
 UNTIL P.C. 8037 HAS BEEN ACCEPTED
 AND TRACT NO. 25114 IS RECORDED.

DOUBLE SCALE
 NEWHALL BLDG. DIST. NO. 82

PROFILE, ALIGNMENT AND GRADE OF
 SANITARY SEWERS P.C. 8037
 TO BE CONSTRUCTED IN
 TRACT NO. 25114

PRIVATE CONTRACT NO. 8037

W.S. 62-A-3
 3 SHEETS, 6 PAGES

SCALE: VERT. 1"=6' HORIZ. 1"=40'

JAN. 1968
 40381

PREPARED IN THE OFFICE OF
 VOORHEES, TRINDLE CO.
 5919 Van Nuys Blvd., Van Nuys, California
 by Michael F. Madson
 REG. C. E. NO. 16768

FOR LEGEND SEE PLAN NO. S-1

- NOTES:
- PROVIDE STAKES ON THE PROPERTY LINE OR PROPERTY LINES PRODUCED AT RIGHT ANGLES TO THE SEWER LINE AT THE CENTER LINE OF EACH MANHOLE.
 - NO REPRESENTATIVE OF THE COUNTY ENGINEER WILL SURVEY OR LAY OUT ANY PORTION OF THE WORK.
 - THE PRIVATE ENGINEER SHALL FURNISH THE COUNTY ENGINEER WITH GRADE SHEETS AND STATIONING FOR ALL HOUSE LATERALS AND "Y" BRANCHES AND SHALL PROVIDE STAKES FOR THEM AT THEIR PROPER LOCATIONS WITH STATIONING PLAINLY MARKED. ALL HOUSE LATERALS SHALL BE CONSTRUCTED BY A STRAIGHT ALIGNMENT AT RIGHT ANGLES FROM THE MAIN LINE SEWER EXCEPT AS SHOWN ON THE PLANS. HOUSE LATERALS FROM CHIMNEYS SHALL NOT HAVE AN ANGLE OF LESS THAN 45° WITH THE MAIN LINE SEWER. ANY CHANGE IN ALIGNMENT SHALL BE REQUESTED IN WRITING BY THE PRIVATE ENGINEER.
 - THE PRIVATE ENGINEER SHALL FURNISH THE HOUSE LATERAL DEPTH AT THE PROPERTY LINE BELOW THE TOP OF CURB ELEVATION FOR EACH HOUSE LATERAL ON THE GRADE SHEET.
 - NO REVISIONS SHALL BE MADE IN THESE PLANS WITHOUT THE APPROVAL OF THE COUNTY ENGINEER.
 - THE CONTRACTOR SHALL NOTIFY THE CONSTRUCTION DIVISION BY TELEPHONE, MADISON 9-470, EXT. 8158, AT LEAST TWENTY-FOUR HOURS BEFORE STARTING ANY WORK UNDER THIS CONTRACT.
 - ALL STRUCTURES SHALL BE EITHER BRICK MANHOLES PER S-8 OR PRECAST CONCRETE MANHOLES PER S-8 OR S-6, EXCEPT AS NOTED.
 - "Y" OR "Y" BRANCHES MAY BE USED FOR CONNECTIONS TO MAIN LINE SEWERS, EXCEPT AS NOTED.
 - SEWER PIPE BEDDING SHALL CONFORM TO S-81.
 - USE EXTRA STRENGTH PIPE, ALL PIPE IS STANDARD DEPTH EXCEPT AS NOTED.
 - VERTICAL CLAY PIPE JOINTS SHALL BE TYPE "D", "E", OR "F" PER STANDARD SPEC'S, SEC. 508-8.
 - IF A POWER POLE IS WITHIN THREE FEET OF THE SEWER, THE SEWER SHALL BE ENCASED, PER S-23, TWO FEET ON EACH SIDE FROM THE POINT OF INTERFERENCE.
 - IF DURING THE COURSE OF CONSTRUCTION IT IS DETERMINED THAT THERE IS LESS THAN FOUR FEET OF COVER OVER THE TOP OF A MAIN LINE OR HOUSE LATERAL P.C. SEWER WHICH IS NOT INDICATED ON THE PLANS, THE PIPE SHALL BE ENCASED PER S-23, UNLESS OTHERWISE APPROVED BY THE COUNTY ENGINEER.
 - HOUSE LATERALS TO BE CONSTRUCTED WITH INVERTS AT PROPERTY LINE 6 FEET BELOW CURB GRADE.
 - RESURFACE ALL TRENCHES WITHIN PAVED AREAS TO MEET L.A. COUNTY ROAD DEPT. OR CALIFORNIA STATE HIGHWAY REQUIREMENTS IN ACCORDANCE WITH PERMITS.
 - SEWERS TO BE TESTED FOR LEAKAGE PER SECTION 306-62.7 OF STANDARD SPEC'S.
 - REFER TO SECTION 7-10.4.1 OF THE STANDARD SPEC'S, REGARDING SAFETY CHAINS.
 - SPECIAL BACKFILL IN DESIGNATED AREAS:
 - Backfill trenches and replace after earth removed so as to maintain the natural or finished grade and slopes shown on the grading plan approved for this Tract by Bldg. & Safety Division.
 - All backfill and earth replaced shall be compacted to a minimum of 80% of maximum density per ASTM STANDARD METHOD D-1557-57, use modified Acceptable certifi. of such compacting shall be submitted to the Construction Division.
 - ALL JOINTS BETWEEN CITY 24" PIPE AND VERTICAL CLAY PIPE SHALL BE MADE WITH A RUBBER SLEEVE JOINT, TYPE "C" OR "D", WITH BUSHING IF NECESSARY, PER STANDARD SPEC'S, SEC. 508-5.

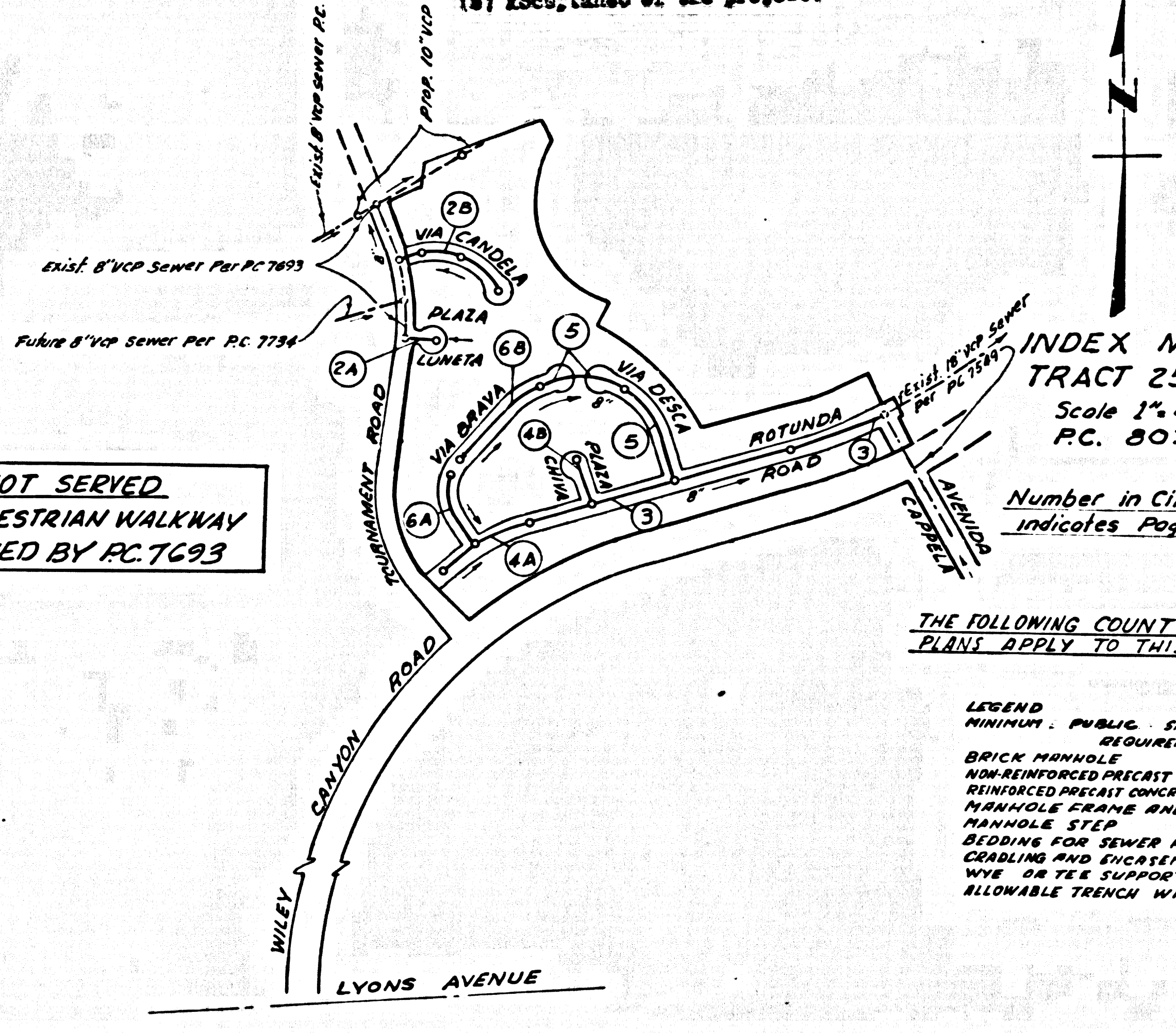
INDEX MAP
 TRACT 25114
 Scale 1"=400'
 P.C. 8037

Number in Circles
 Indicates Page Numbers

THE FOLLOWING COUNTY ENGINEER STANDARD
 PLANS APPLY TO THIS PROJECT.

MINIMUM PUBLIC SAFETY REQUIREMENTS	S-1
BRICK MANHOLES	S-2
NON-REINFORCED PRECAST CONC. MANHOLES	S-3
REINFORCED PRECAST CONC. MANHOLES	S-4
MANHOLE FRAMES AND COVERS	S-5
MANHOLE STEPS	S-6
BEDDING FOR SEWER PIPE	S-7
CRAWLING AND EXCAVATION	S-8
WHS OR TIE SUPPORT	S-9
ALLOWABLE TRENCH WIDTHS	S-10

NOTE: LOTS NOT SERVED
 LOT 98 - PEDESTRIAN WALKWAY
 LOT 97 - SERVED BY P.C. 7693



NOTICE TO CONTRACTOR

The existence and location of any underground utility pipes or structures shown on these plans are obtained by a search of the available records. To the best of my knowledge there are no existing utilities except as shown on these plans. The contractor is required to take due precautionary measures to protect the utility lines shown and any other lines not of record or not shown on these plans.

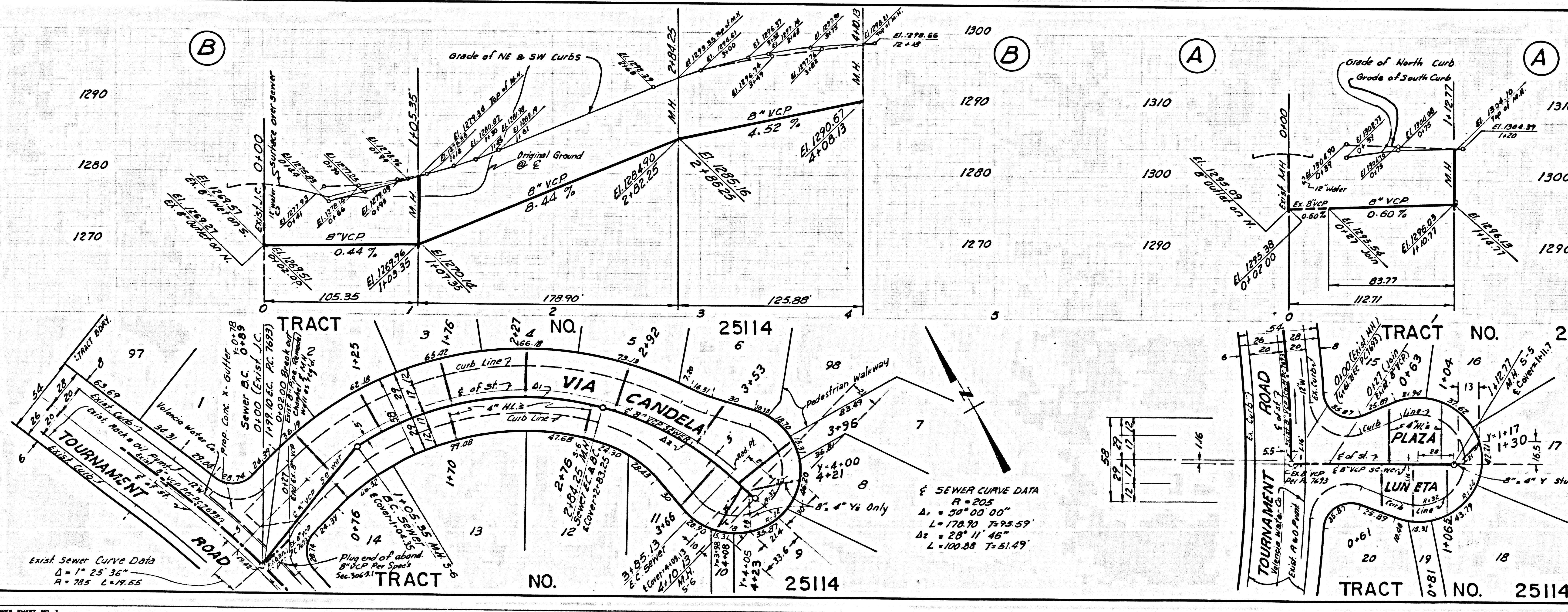
Michael F. Madson
 REG. C. E. NO. 16768

GRADES TO WHICH THIS IMPROVEMENT IS TO BE CONSTRUCTED ARE SHOWN ON PLANS AND PROFILES. GRADE POINTS FOR TOP OF CURBS, CENTER LINE OF STREETS, OR CENTER LINE OF ALLEYS ARE SHOWN BY CIRCLES ON PROFILES. AT ALL POINTS BETWEEN DESIGNATED POINTS THE GRADE SHALL BE ESTABLISHED AS TO CONFORM TO A STRAIGHT LINE BETWEEN SAID DESIGNATED POINTS. THE DRAWINGS AND THE DATA HEREON ARE HEREBY MADE A PART OF THE SPECIFICATIONS. WORK SHALL BE CONSTRUCTED ACCORDING TO STANDARD SPECIFICATIONS FOR PUBLIC WORKS CONSTRUCTION AND COUNTY ENGINEER SPECIAL PROVISIONS, DATED 1957 AND SHALL BE PROCEEDED ONLY IN THE PRESENCE OF THE COUNTY ENGINEER. BEFORE WORK CAN BE STARTED, THE CONTRACTOR MUST OBTAIN A PERMIT TO EXCAVATE IN COUNTY STREETS FROM THE L.A. COUNTY ROAD DEPT., DISTRICT OFFICE NO. 3 AND PAY A FEE TO THE COUNTY ENGINEER, ROOM 300, COUNTY ENGINEERING BUILDING, 100 WEST SPRING STREET OR CONSTRUCTION INSPECTION AND RECORD PLANS, 100 WEST SPRING STREET. APPROVAL OF THIS PLAN BY THE COUNTY OF LOS ANGELES DOES NOT CONSTITUTE A REPRESENTATION AS TO THE ACCURACY OF THE LOCATION OF OR THE EXISTENCE OR NON-EXISTENCE OF ANY UNDERGROUND UTILITY PIPE, OR STRUCTURE WITHIN THE LIMITS OF THIS PROJECT. THIS NOTE APPLIES TO ALL PAGES. IF WORK IS TO BE DONE IN A STATE HIGHWAY, A PERMIT MUST BE OBTAINED FROM THE STATE OF CALIFORNIA, DIVISION OF HIGHWAYS, 120 SOUTH SPRING STREET, LOS ANGELES, CALIFORNIA.

COUNTY OF LOS ANGELES, CALIFORNIA
 JOHN A. LAMBE, COUNTY ENGINEER
 APPROVED BY: [Signature] REGIONAL ENGINEER
 APPROVED BY: [Signature] OFFICE ENGINEER

CHECKED BY: [Signature] DATE: 6/10/68
 REG. C. E. NO. 13466

J.N.0250.02



P.C. 8037 PAGE 2
 NO CHARGE FOR CONNECTIONS
 DOUBLE SCALE

40382

VIEW A-A
 NOTE: CONTRACTOR TO VERIFY THE INVERT ELEV. AT STA. 0+27 AT THE TIME OF CONSTRUCTION.

SEWER CURVE DATA
 R = 205
 Δ = 30° 00' 00"
 L = 178.70 7+93.57
 Δ = 28° 11' 46"
 L = 100.88 7+51.49

