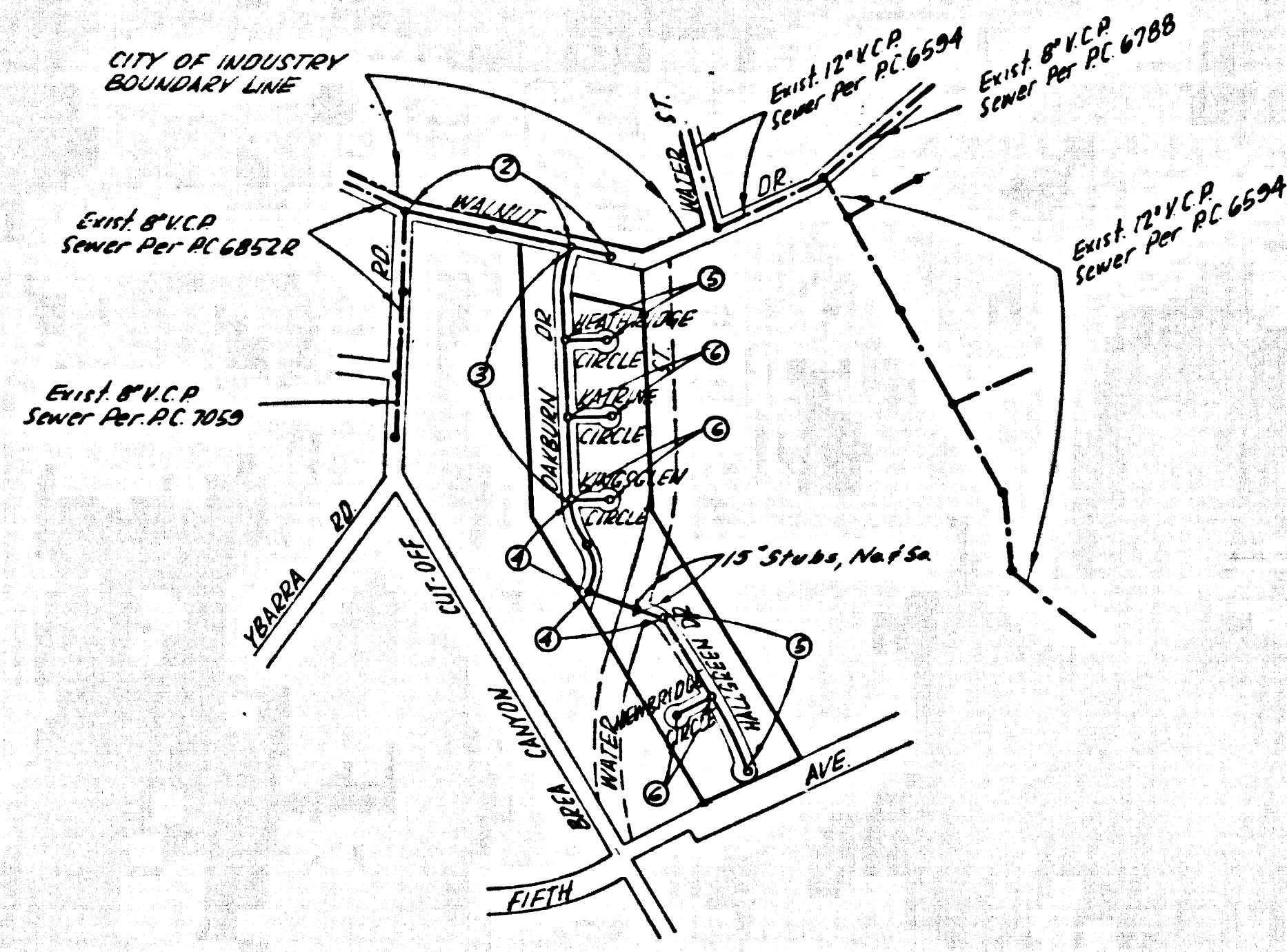


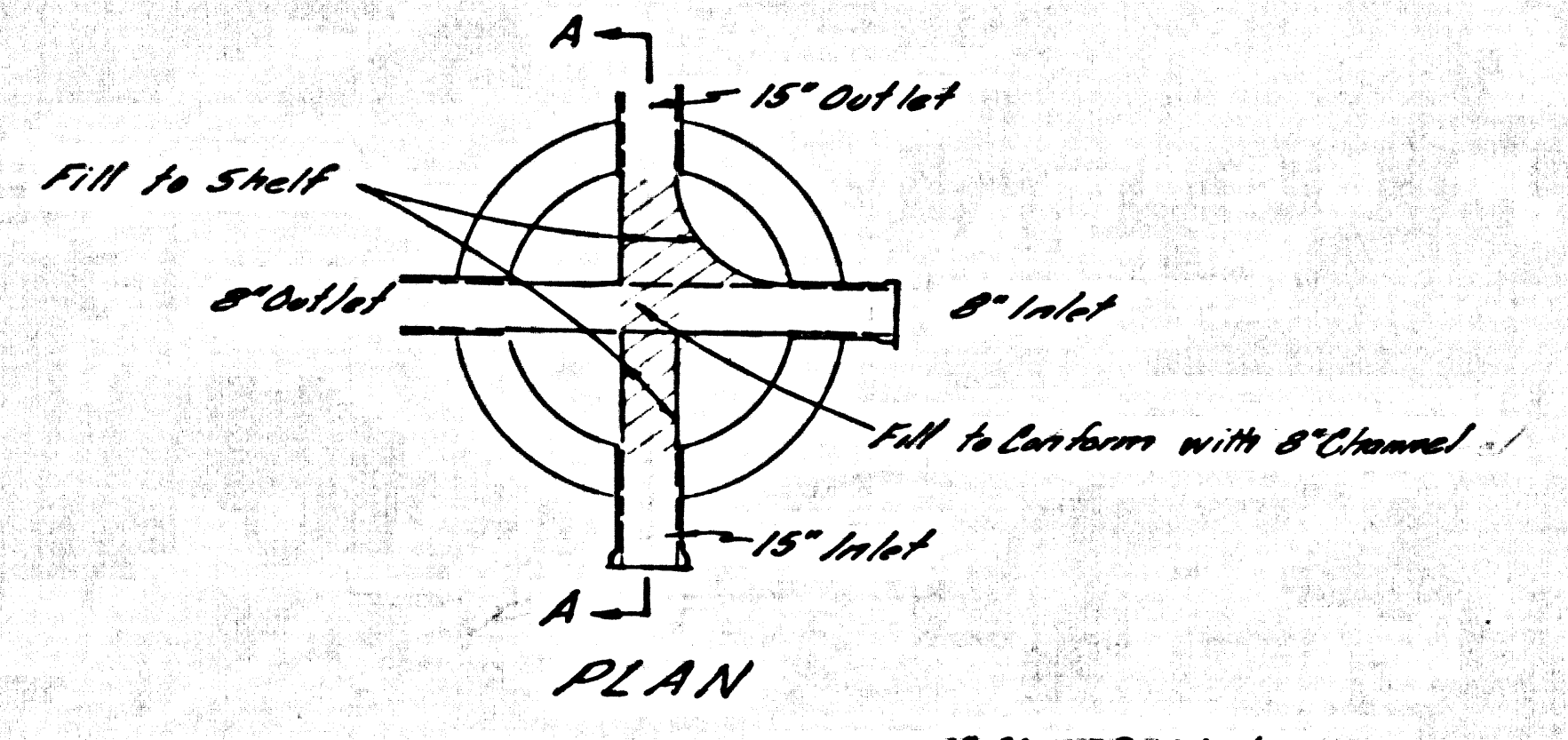
B.M. B.S. 1307 ELEV. 502.450  
 1/4" C.E. of W. end conc. ret. Wall  
 470' N. P.P. 47129 E. 1/4 23' N. 1/4  
 Walnut Dr.  
 OTTERBEIN QUAD. 19 65



INDEX MAP  
 TRACT NO. 28554  
 RC. N. 8041  
 SCALE 1"=600'

THE FOLLOWING LATEST REVISED STANDARD PLANS ON FILE IN THE OFFICE OF THE COUNTY ENGINEER SHALL APPLY IN THE CONSTRUCTION OF THIS PROJECT

MINIMUM PUBLIC SAFETY REQUIREMENTS	5/1
BRICK MANHOLE	5/2
MANHOLE FRINGE AND COVER	5/3
MANHOLE COVERS	5/4
BEARING FOR SEWER PIPE	5/5
LOADING AND UNLOADING	5/6
WYE OR TEE SUPPORT	5/7
ALLOWABLE TRENCH WIDTH	5/8



SECTION A-A  
 DETAIL OF J.C. BASE 5th 3+2901 Page A-A

LA PUENTE BLDG. DIST. NO. 2

- NOTE:
1. PROVIDE STAKES ON THE PROPERTY LINE OR PROPERTY LINES PRODUCED AT RIGHT ANGLES TO THE SEWER LINE AT THE CENTER LINE OF EACH MANHOLE.
  2. NO REPRESENTATIVE OF THE COUNTY ENGINEER WILL SURVEY OR LAY OUT ANY PORTION OF THE WORK.
  3. THE PRIVATE ENGINEER SHALL FURNISH THE COUNTY ENGINEER WITH GRADE SHEETS AND STATIONING FOR ALL HOUSE LATERALS AND "T" OR "Y" BRANCHES AND SMALL PROVIDE STAKES FOR THEM AT THEIR PROPER LOCATION WITH STATIONING CLEARLY MARKED. ALL HOUSE LATERALS SHALL BE CONSTRUCTED IN A STRAIGHT ALIGNMENT AT RIGHT ANGLES FROM THE MAIN LINE SEWER EXCEPT AS SHOWN ON THE PLANS. HOUSE LATERALS FROM CHIMNEYS SHALL NOT HAVE AN ANGLE OF LESS THAN 45° WITH THE MAIN LINE SEWER. ANY CHANGE IN ALIGNMENT SHALL BE REQUESTED IN WRITING BY THE PRIVATE ENGINEER.
  4. THE PRIVATE ENGINEER SHALL FURNISH THE HOUSE LATERAL DEPTH AT THE PROPERTY LINE BELOW THE TOP OF CURB ELEVATION FOR EACH HOUSE LATERAL ON THE GRADE SHEET.
  5. NO REVISIONS SHALL BE MADE IN THESE PLANS WITHOUT THE APPROVAL OF THE COUNTY ENGINEER.
  6. THE CONTRACTOR SHALL NOTIFY THE CONSTRUCTION DIVISION BY TELEPHONE, MADISON 9-4247, EXT. 81281, AT LEAST TWENTY-FOUR HOURS BEFORE STATING ANY WORK UNDER THIS CONTRACT.
  7. ALL STRUCTURES SHALL BE EITHER BRICK MANHOLES PER S-5 OR S-6, EXCEPT AS NOTED.
  8. "T" OR "Y" BRANCHES MAY BE USED FOR CONNECTIONS TO MANHOLE SEWER EXCEPT AS NOTED.
  9. MANHOLE TOPS IN UNIMPROVED RIGHTS-OF-WAY TO BE SIX INCHES ABOVE FINISHED GRADE.
  10. USE EXTRA STRENGTH PIPE. ALL PIPE IS STANDARD DEPTH EXCEPT AS NOTED.
  11. VITRIFIED CLAY PIPE JOINTS SHALL BE TYPE "D" AND "E" PER STD. SPEC. SECTION 308-2.
  12. IF A POWER POLE IS WITHIN THREE FEET OF THE SEWER, THE SEWER SHALL BE ENCASED, PER S-23, TWO FEET OVER THE TOP OF THE POINT OF INTERFERENCE.
  13. IF DURING THE COURSE OF CONSTRUCTION IT IS DETERMINED THAT THERE IS LESS THAN FOUR FEET OF COVER OVER THE TOP OF A MAIN LINE OR HOUSE LATERAL V.C.P. SEWER WHICH IS NOT INDICATED ON THE PLANS, THE PIPE SHALL BE ENCASED PER S-23, UNLESS OTHERWISE APPROVED BY THE COUNTY ENGINEER.
  14. HOUSE LATERALS TO BE CONSTRUCTED WITH INVERTS AT PROPERTY LINE 4 FEET BELOW CURB GRADE EXCEPT AS NOTED.
  15. REFERENCE ALL TRENCHES WITHIN PAVED AREAS TO MEET L.A. COUNTY ROAD DEPT. OR CALIFORNIA STATE HIGHWAY REQUIREMENTS IN ACCORDANCE WITH PERMITS.
  16. SEWERS TO BE TESTED FOR LEAKAGE PER SECTION 308-3.27 STANDARD SPECIFICATIONS.
  17. REFER TO SECTION 308-3.1 OF THE STANDARD SPECIFICATIONS REGARDING SAFETY AND SIGNS.
  18. SPECIAL BACKFILL IN DESIGNATED AREAS: BACKFILL TRENCH AND REPLACE OTHER EARTH REMOVED SO AS TO ACHIEVE THE NATURAL OR FINISHED GRADES AND SLOPES SHOWN ON THE GRADING PLAN APPROVED FOR THIS TRACT BY THE BUILDING AND SAFETY DIVISION.
  19. ALL BACKFILL AND EARTH REPLACEMENT SHALL BE COMPACTED TO A MINIMUM OF 90% OF MAXIMUM DENSITY PER A.S.T.M. STANDARD METHOD OF TEST D96-97 AS MODIFIED. ACCEPTABLE CERTIFICATION OF SUCH COMPACTION SHALL BE SUBMITTED TO THE CONSTRUCTION DIVISION.
  20. ALL HOUSE LATERALS CUT FROM PIPE AND VITRIFIED CLAY PIPE SHALL BE MADE WITH A RUBBER SLEEVE JOINT TYPE "C" OR "D" WITH BUSHING PER STD. SPEC. SECTION 308-2.

County Sanitation Districts shall be notified prior to the following so that required inspection can be made (Phone 537-1025 x 4000-2000)

Acceptance of the project.

COLLECT CHARGES AS INDICATED

No connections for the disposal of industrial wastes shall be made to sewers shown on these drawings without written permission from the Chief Engineer and General Manager of the County Sanitation Districts.

PROFILE ALIGNMENT AND GRADE OF  
 SANITARY SEWERS  
 CONSTRUCTED IN  
 TRACT NO. 28554

PRIVATE CONTRACT NO. 8041

W.S. 38  
 3 SHEETS; 6 PAGES  
 SCALE: VERT. 1"=4'  
 HORIZ. 1"=40'

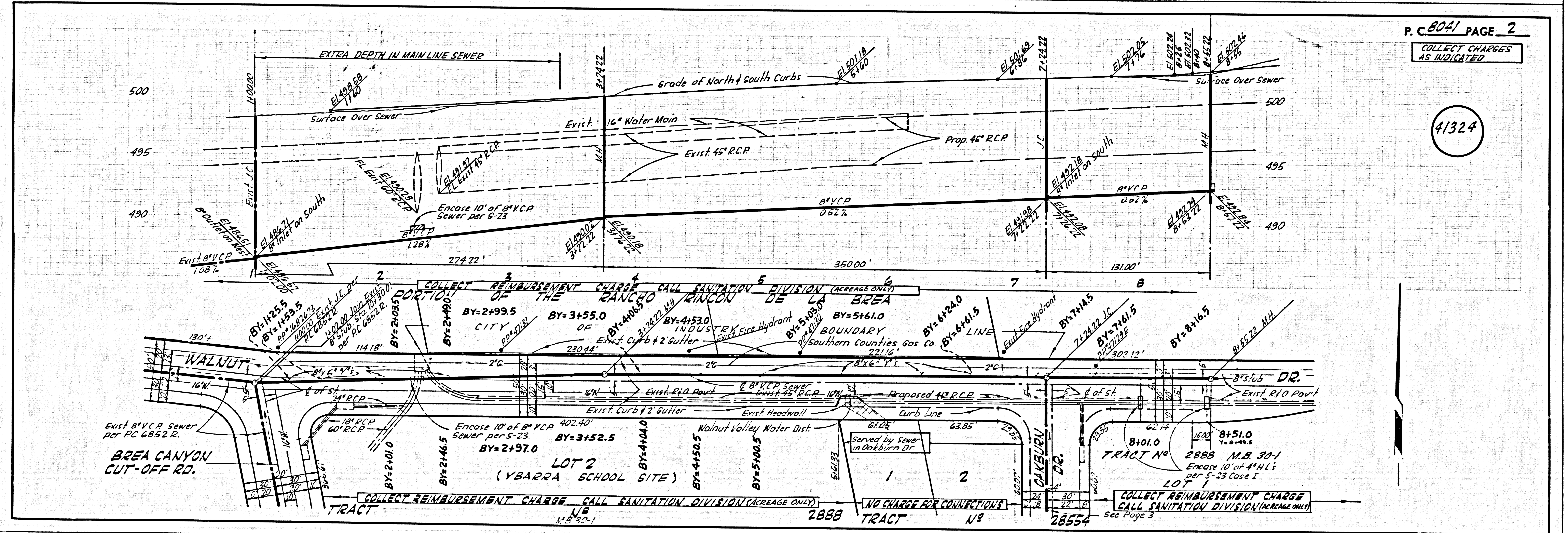
PREPARED IN THE OFFICES OF  
 EVANS ASSOCIATES INC.  
 1545 N. GARVEY AVE. WEST COVINA CALIF. 91724  
 BY: Ronald P. Blumhagen 3-8-68  
 REG. C. E. NO. 12425

NOTE: GRADES TO WHICH THIS IMPROVEMENT IS TO BE CONSTRUCTED ARE SHOWN ON PLANS AND PROFILES. GRADE POINTS FOR TOP OF CURBS, CENTER LINE OF STREETS, OR CENTER LINE OF ALLEYS ARE SHOWN BY CIRCLES ON PROFILES. ALL POINTS BETWEEN DESIGNATED POINTS ARE IN FEET ABOVE U.S.C. & G.S. SEA LEVEL DATUM OF 1929.

WORK SHALL BE CONSTRUCTED ACCORDING TO THE STANDARD SPECIFICATIONS FOR PUBLIC WORKS CONSTRUCTION AND SPECIAL PROVISIONS FOR THE CONSTRUCTION OF SANITARY SEWERS PER S-5, S-6, S-23, AND S-24, AND SHALL BE PROTECTED ONLY IN THE PRESENCE OF THE COUNTY ENGINEER. THE CONTRACTOR MUST OBTAIN A PERMIT TO EXCAVATE IN COUNTY STREETS FROM THE L.A. COUNTY ROAD DEPT., DISTRICT OFFICE NO. 4, 237 1/2 BROADWAY AND PAY A FEE TO THE COUNTY ENGINEER, ROOM 330, COUNTY ENGINEERING BLDG., 1545 N. GARVEY AVE., WEST COVINA, CALIF. 91724. REGIONAL OFFICE, SUFFICIENT TO COVER THE COST OF CONSTRUCTION INSPECTION AND RECORD PLANS.

APPROVED BY: J. D. Parkhurst, COUNTY ENGINEER  
 APPROVED BY: J. D. Parkhurst, CHIEF ENGINEER  
 COUNTY OF LOS ANGELES, CALIFORNIA

CHECKED BY: J. D. Parkhurst 5-14-69  
 REG. C. E. NO. 12425



P. C. 8041 PAGE 2  
 COLLECT CHARGES AS INDICATED

41324

