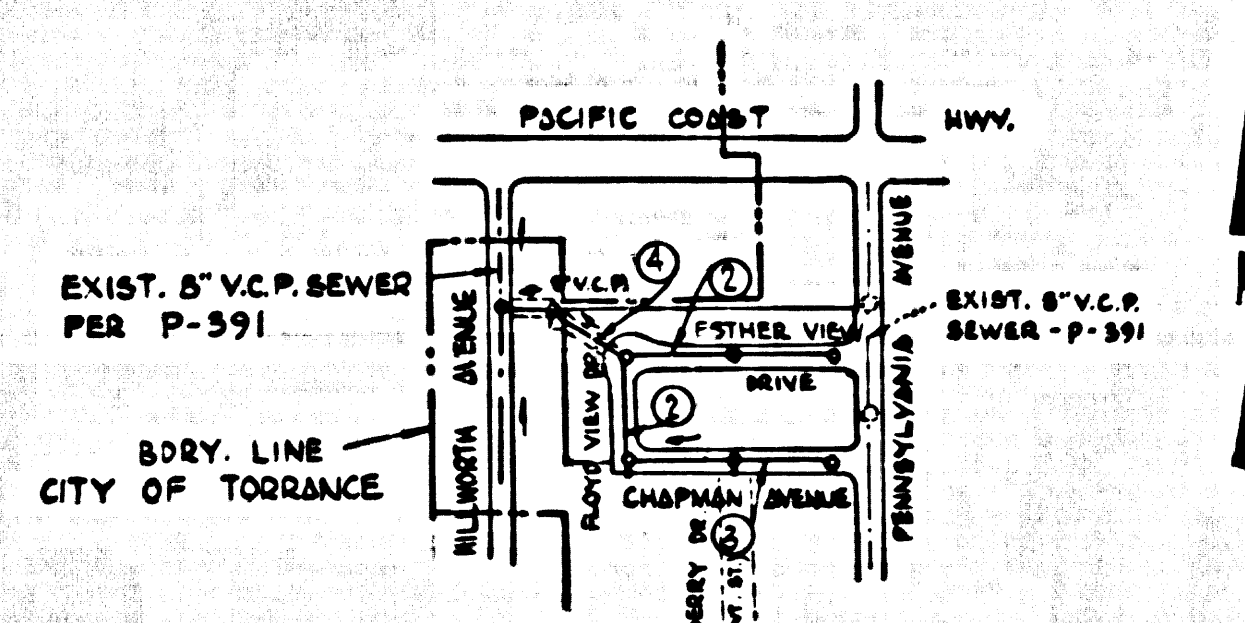


B.M. 3Y-3521 ELEV. 135.813
 L. 8th. S. CA. PAC. COAST HWY. 38'S.
 6 2/3 FT. WEST OF E LYPPRESS
 MARK B.M.
 First Vertex QUAD. 1965



INDEX MAP
 TRACT NO. 28367
 SCALE: 1"=500'

THE FOLLOWING LATEST REVISED STANDARD PLANS ON FILE IN THE OFFICE OF THE CITY ENGINEER SHALL APPLY IN THE CONSTRUCTION OF THIS PROJECT.

LEGEND	S-1
MINIMUM EXCAVATION SAFETY REQUIREMENTS	S-2
BRICK MANHOLE	S-3
NON-REINFORCED PRECAST CONCRETE MANHOLE	S-4
REINFORCED PRECAST CONCRETE MANHOLE	S-5
MANHOLE FRAME AND COVER	S-6
MANHOLE STEP	S-7
BEDDING FOR SEWER PIPE	S-8
CRADLING AND ENCASUREMENT	S-9
WYE OR TEE SUPPORT	S-10
ALLOWABLE TRENCH WIDTHS	S-11

No connections for the disposal of industrial wastes shall be made to sewers shown on these drawings without written permission from the Chief Engineer and General Manager of the County Sanitation Districts.

County Sanitation Districts shall be notified prior to the following so that required inspection can be made (Phone 664-2025 - 636-3097)

Acceptance of the project.

CITY OF LOMITA BLDG. DIST. NO. 12.04

- NOTES:
- PROVIDE STAKES ON THE PROPERTY LINE OR PROPERTY LINES PRODUCED AT RIGHT ANGLES TO THE SEWER LINE AT THE CENTER LINE OF EACH MANHOLE.
 - NO REPRESENTATIVE OF THE CITY ENGINEER WILL SURVEY OR LAY OUT ANY PORTION OF THE WORK.
 - THE PRIVATE ENGINEER SHALL FURNISH THE CITY ENGINEER WITH GRADE SHEETS AND STATIONING FOR ALL HOUSE LATERALS. ALL HOUSE LATERALS SHALL BE CONSTRUCTED IN A STRAIGHT ALIGNMENT AT RIGHT ANGLES FROM THE MAIN LINE SEWER EXCEPT AS SHOWN ON THE PLANS. HOUSE LATERALS FROM CHIMNEYS SHALL NOT HAVE AN ANGLE OF LESS THAN 45° WITH THE MAIN LINE SEWER. ANY CHANGE IN ALIGNMENT SHALL BE REQUESTED IN WRITING BY THE PRIVATE ENGINEER.
 - THE PRIVATE ENGINEER SHALL FINISH THE HOUSE LATERAL DEPTH AT THE PROPERTY LINE BELOW THE TOP OF CURB ELEVATION FOR EACH HOUSE LATERAL ON THE GRADE SHEET.
 - NO REVISIONS SHALL BE MADE IN THESE PLANS WITHOUT THE APPROVAL OF THE CITY ENGINEER.
 - THE CONTRACTOR SHALL NOTIFY THE CONSTRUCTION DIVISION BY TELEPHONE, MADISON 9-6700, EXT. 81501, AT LEAST TWENTY-FOUR HOURS BEFORE STARTING ANY WORK UNDER THIS CONTRACT.
 - ALL STRUCTURES SHALL BE EITHER BRICK MANHOLES PER S-3 OR PRECAST CONCRETE MANHOLES PER S-4 OR S-5, EXCEPT AS NOTED.
 - "Y" OR "Y" BRANCHES MAY BE USED FOR CONNECTIONS TO MAIN/LINE SEWERS, EXCEPT AS NOTED.
 - MANHOLE TOPS IN UNAPPROVED RIGHTS-OF-WAY TO BE SIX INCHES ABOVE FINISHED GRADE.
 - USE EXTRA STRENGTH PIPE. ALL PIPE IS STANDARD DEPTH EXCEPT AS NOTED.
 - VITRIFIED CLAY PIPE JOINTS SHALL BE TYPE "B", "C", OR "D", PER S.P.C.I., SEC. 208-5.
 - IF A POWER POLE IS WITHIN THREE FEET OF THE SEWER, THE SEWER SHALL BE ENCASED, PER S-23, TWO FEET ON EACH SIDE FROM THE POINT OF INTERFERENCE.
 - IF DURING THE COURSE OF CONSTRUCTION IT IS DETERMINED THAT THERE IS LESS THAN FOUR FEET OF COVER OVER THE TOP OF A MAIN LINE OR HOUSE LATERAL V.C.P. SEWER WHICH IS NOT INDICATED ON THE PLANS, THE PIPE SHALL BE ENCASED PER S-23, UNLESS OTHERWISE APPROVED BY THE CITY ENGINEER.
 - HOUSE LATERALS TO BE CONSTRUCTED WITH INVERTS AT PROPERTY LINE & PRET BLOW CURB GRADE EXCEPT AS NOTED.
 - RESURFACE ALL TRENCHES WITHIN PAVED AREAS TO MEET L.A. COUNTY ROAD DEPT. OR CALIFORNIA STATE HIGHWAY REQUIREMENTS IN ACCORDANCE WITH PERMITS.
 - SEWERS TO BE TESTED FOR LEAKAGE PER SECTION 946-2.3, 7, STD. SPECS.
 - REFER TO SECTION 7.10.4.1 OF THE STANDARD SPECIFICATIONS, REGARDING SAFETY ORDERS.
 - SPECIAL BACKFILL IN DESIGNATED AREA BY:
 - BACKFILL TRENCH AND REPLACE OTHER EARTH REMOVED SO AS TO ACHIEVE THE NATURAL OR FINISHED GRADES AND SLOPES SHOWN ON THE GRADING PLAN APPROVED FOR THIS TRACT BY THE BUILDING AND SAFETY DIVISION.
 - ALL BACKFILL AND EARTH REPLACED SHALL BE COMPACTED TO A MINIMUM OF 90% OF MAXIMUM DENSITY PER A.S.T.M. STANDARD METHOD OF TEST D-698-57-T AS MODIFIED ACCEPTABLE CERTIFICATION OF SUCH COMPACTION SHALL BE SUBMITTED TO THE CONSTRUCTION DIVISION.

COLLECT CHARGES AS INDICATED

NOTICE TO CONTRACTOR

The existence and location of any underground utility pipes or structures shown on these plans are obtained by a search of the available records. To the best of my knowledge there are no existing utilities except as shown on these plans. The contractor is required to take due precautionary measures to protect the utility lines shown and any other lines not of record or not shown on these plans.

Clah M. Leonard
 S.C.E. 12167

PROFILE, ALIGNMENT AND GRADE OF
 SANITARY SEWERS PAGE 1
 TO BE CONSTRUCTED IN

TRACT NO. 28367
 PRIVATE CONTRACT NO. 8043

W.S. 27
 2 SHEETS, 4 PAGES
 SCALE: VERT. 1"=4' HORIZ. 1"=40'
 MARCH, 1965
 PREPARED IN THE OFFICES OF

Clah M. Leonard
 REG. C.E. NO. 15167

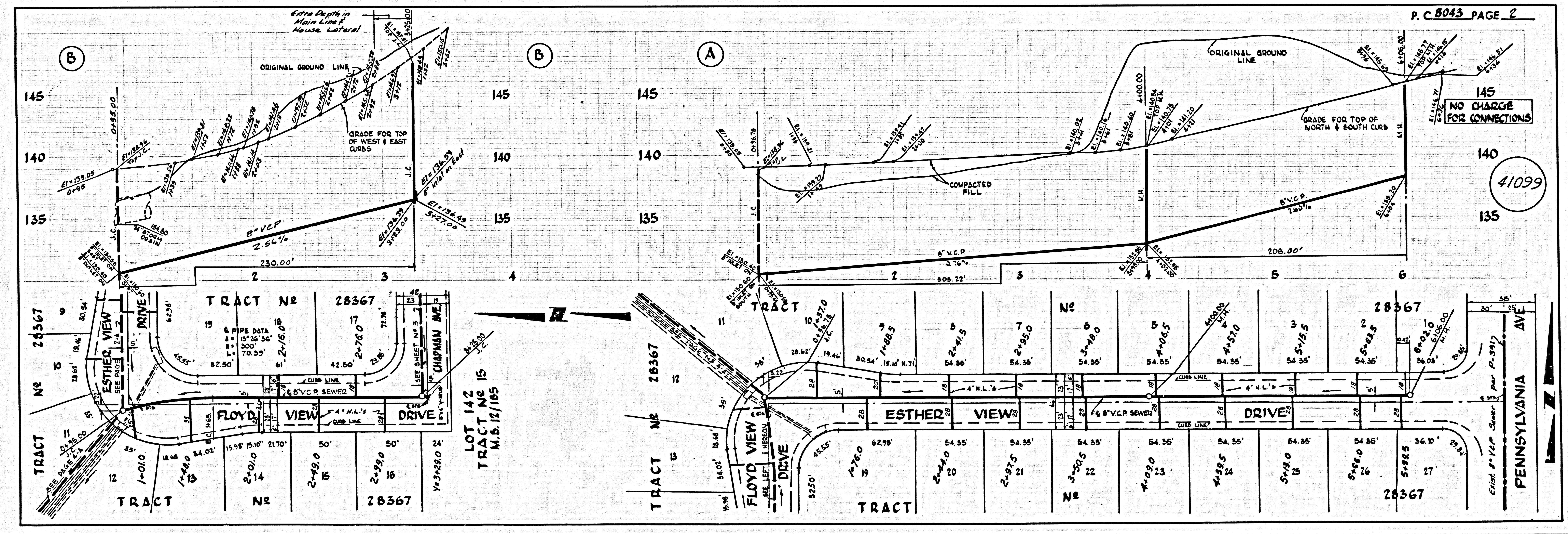
FOR LEGEND SEE PLAN NO. S-1

NOTE: GRADES TO WHICH THIS IMPROVEMENT IS TO BE CONSTRUCTED ARE SHOWN ON PLANS AND PROFILES. SPREAD POINTS FOR TOP OF CURBS, CENTER LINE OF STREETS, OR CENTER LINE OF ALLEYS ARE SHOWN BY CIRCLES ON PROFILES. AT ALL POINTS BETWEEN DESIGNATED POINTS THE GRADE SHALL BE ESTABLISHED SO AS TO CONFORM TO A STRAIGHT LINE BEHIND BOTH DESIGNATED POINTS. ELEVATIONS ARE IN FEET ABOVE U.S.C. & G.S. SEA LEVEL DATUM OF 1929. THIS DRAWING AND THE DATA HEREON ARE HEREBY MADE A PART OF THE SPECIFICATIONS. WORK SHALL BE CONSTRUCTED ACCORDING TO STANDARD SPECIFICATIONS FOR PUBLIC WORKS CONSTRUCTION AND CITY ENGINEER'S SPECIAL REQUIREMENTS, JAN. 2, 1965. AS REVISED MAY BE APPLIED TO THIS PROJECT. IN THE EVENT OF THE CITY ENGINEER, APPROVE WORK ONLY AS STATED. THE CONTRACTOR MUST OBTAIN A PERMIT TO EXCAVATE IN CITY STREETS FROM THE L.A. COUNTY ROAD DEPARTMENT AND PAY A FEE TO THE CITY ENGINEER. THESE PROVISIONS APPLY TO THE CONTRACTOR TO COVER THE COST OF CONSTRUCTION INSPECTION AND RECORD PLANS. APPROVAL OF THIS PLAN BY THE CITY OF LOMITA DOES NOT CONSTITUTE A REPRESENTATION AS TO THE ACCURACY OF THE LOCATION OF OR THE EXISTENCE OR NON-EXISTENCE OF ANY UNDERGROUND UTILITY PIPE, OR STRUCTURE WITHIN THE LIMITS OF THIS PROJECT. THIS NOTE APPLIES TO ALL PAGES. IF WORK IS TO BE DONE IN A STATE HIGHWAY, A PERMIT MUST BE OBTAINED FROM THE STATE OF CALIFORNIA, DIVISION OF HIGHWAYS, 120 SOUTH SPRING STREET, LOS ANGELES, CALIFORNIA.

CITY OF LOMITA, CALIFORNIA
 JOHN A. LAMBE, CITY ENGINEER
 APPROVED BY: Robert Miller, REGIONAL ENGINEER

CHECKED BY: Samuel Volpey 2-13-67
 REG. C.E. NO. 105523

JN 4743



B-1083

