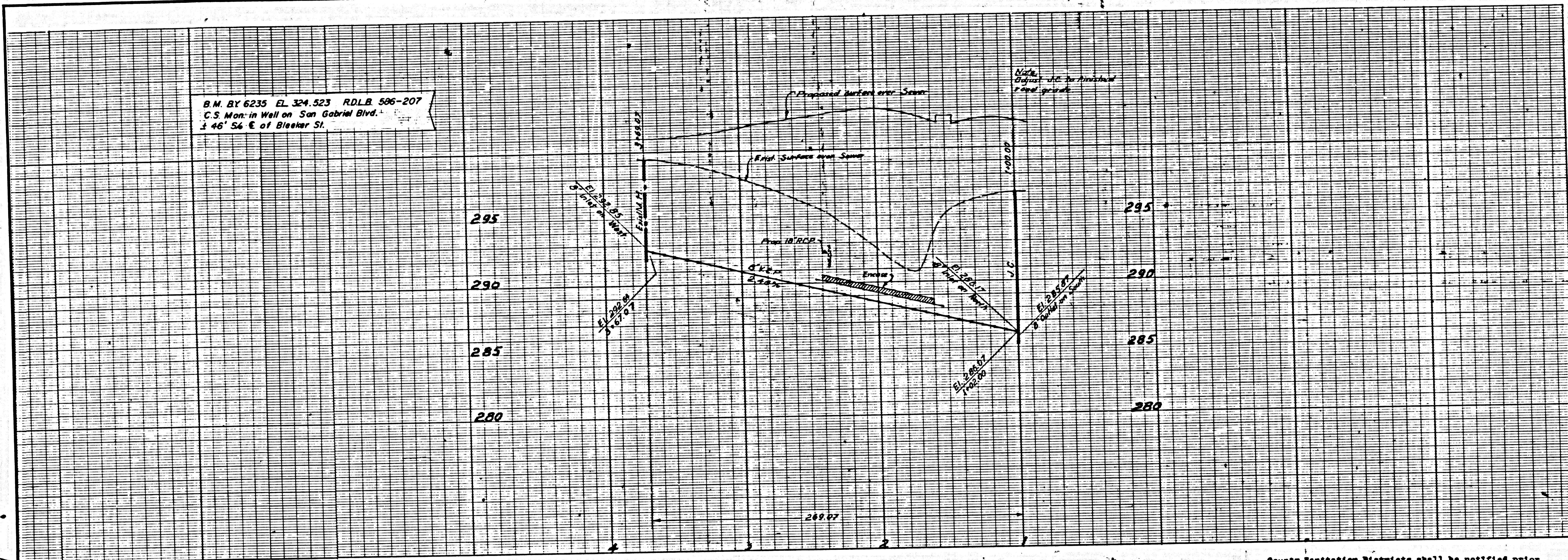
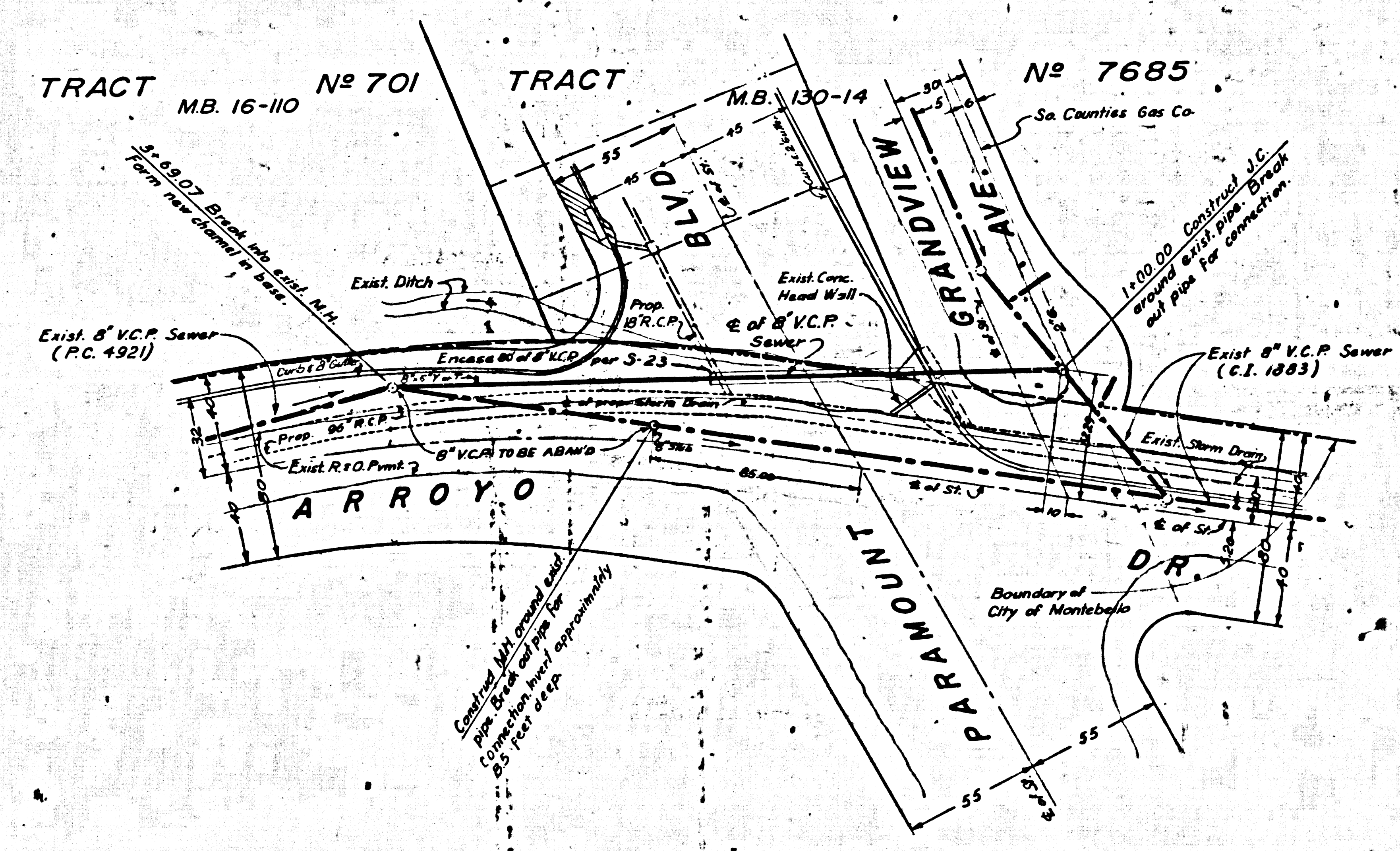


B.M. BY 6235 EL. 324.523 R.D.L.B. 586-207
 C.S. Man-in-Well on San Gabriel Blvd.
 46' 56" E. of Bleeker St.



PROJECT ENGINEER
 DESIGNER
 CHECKER
 REFERENCES



- County Sanitation Districts shall be notified prior to the following so that required inspection can be made (Phone 337 1025)
- (X) Commencement of construction of manhole on District trunk sewer.
 - (X) Breaking into existing manhole on District trunk sewer.
 - (X) Core drilling District trunk sewer.
 - (X) Construction of house connections to District trunk sewer.
 - (S) Acceptance of the project.

NO CONNECTIONS FOR THE DISPOSAL OF INDUSTRIAL WASTES SHALL BE MADE TO SEWERS SHOWN ON THESE DRAWINGS WITHOUT WRITTEN PERMISSION FROM THE CHIEF ENGINEER AND GENERAL MANAGER OF THE COUNTY SANITATION DISTRICTS.

41371

REVIEWED
 REGION SECTION DATE

C.C. Ref. No. 8044 J.N. 0778.50

GENERAL SEWER NOTES

1. Sanitary Sewers shall be constructed in accordance with the Standard Specifications for Public Works Construction (hereinafter referred to as the Standard Specifications) Special Provisions and Standard Plans on file in the Office of the County Engineer, Sanitation Div.
2. For Legend see Standard Plan S-1.
3. Use extra strength Vitrified Clay Pipe. All pipe is standard depth, except as noted.
4. Vitrified clay pipe joints shall be Type "D", "F" or "G" per Section 208-2 of Standard Specifications.
5. "T" or "V" branches may be used for connection to main line sewers, except as noted.
6. All structures shall be either brick manholes per S-3, or concrete manholes per S-6 or S-6A, except as noted.
7. Use standard manhole frames and covers per Standard Plan S-15.
8. Sewer pipe and appurtenances shall be abandoned in accordance with Section 306-3 of Standard Specifications.
9. Sewers to be tested for leakage per Section 306-2.3.7 of Standard Specifications.
10. Refer to Section 7-10.4.1 of the Standard Specifications, regarding safety orders.
11. Existing sewer services and flow shall be maintained at all times.
12. No revisions shall be made to these plans without the approval of the County Engineer.
13. The Contractor shall notify the Construction Division of the County Engineer by telephone 629-4747, Ext. 81554, at least 24 hours before starting any work under this contract.
14. Work performed on County Sanitation District sewers shall be in accordance with that agency's Specifications and requirements.
15. In addition to standards listed above, the following latest revised Standard Plans shall apply in the construction of this project: S-2, S-17, S-21, S-22, S-23, S-26, S-33.
16. Use Case I Standard Bedding for Sewer Pipe per S-21.
17. All concrete cross gutters, curbs, gutters and driveways shall be tunneled or jacked per Los Angeles County Road Department requirements.

ROAD DEPARTMENT
 CASH CONTRACT
 No. 41564

PROFILE, GRADE, AND ALIGNMENT OF
 SANITARY SEWER
 TO BE CONSTRUCTED IN
 ARROYO DRIVE

COUNTY OF LOS ANGELES

JOHN A. LAMBIE COUNTY ENGINEER
 DESIGNED BY: [Signature] APPROVED: [Signature]
 No. 14390
 8-14-68
 (DATE) 41564 (DATE)

JOHN D. PARKHURST
 CHIEF ENGINEER COUNTY SANITATION DIST. NO. 15
 APPROVED BY: [Signature]
 OFFICE ENGINEER

APPROVED
 CITY OF MONTEBELLO
 [Signature]
 CITY ENGINEER
 DATE

REFERENCE	LAYOUT	RECORD PLANS
W.S. 34	TRACED	1 100' MIN.
R.D.F. 228	CHECKED	1 100' MIN.
R.D.L.B. 586	CHECKED	1 100' MIN.
	INSPECTOR	

LOS ANGELES COUNTY ROAD DEPARTMENT			
HIGHWAY DIVISION		JOB NAME	
LIMITS		LIMITS	
DATE	BY	JOB NO.	SHEET OF SHTS.
REVISIONS		SCALE	HORIZ. 1" = 40'
		VERT. 1" = 4'	DWG. NO.