

REVIEWED
 J.N. 0778.49
 C.C. 8045

SCALE
 HORIZ. 1" = 40'
 VERT. 1" = 4'

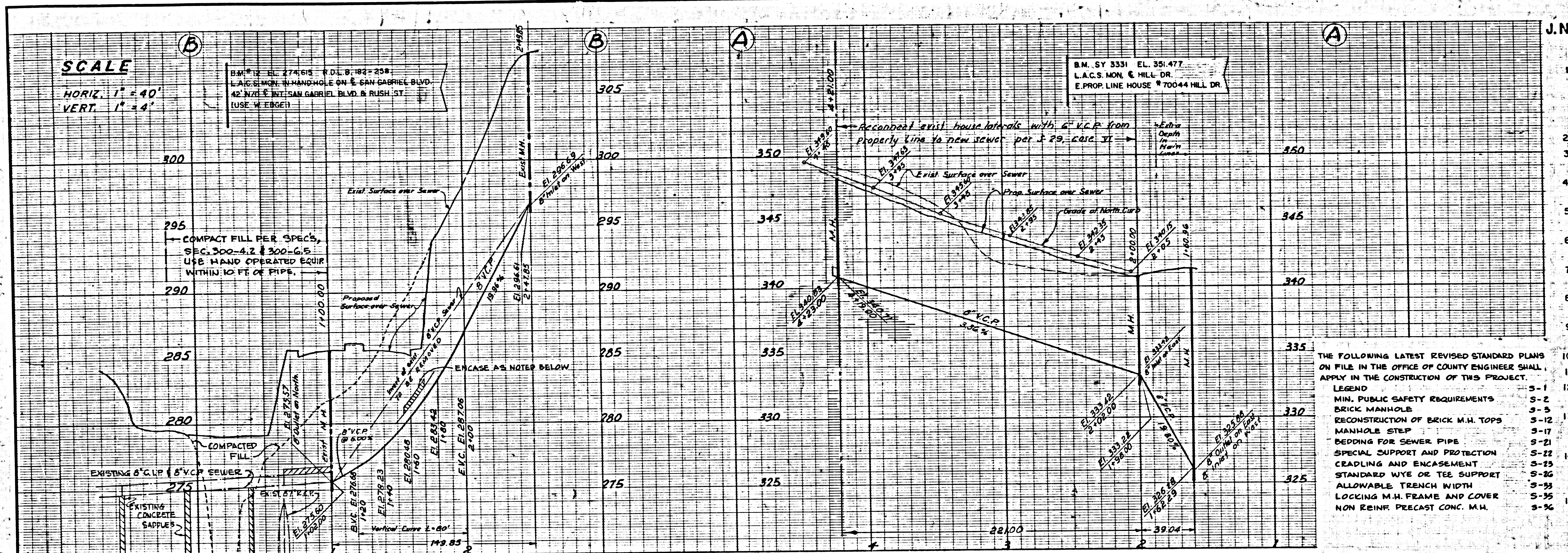
B.M. N. EL. 274.615 N.D.L.B. 182-258
 L.A.C. MANHOLE ON E. SAN GABRIEL BLVD.
 42' N.Z.L. E. INT. SAN GABRIEL BLVD. & RUSH ST.
 (USE W. EDGE)

B.M. SY 3331 EL. 351.477
 L.A.C.S. MON. & HILL DR.
 E. PROP. LINE HOUSE #70044 HILL DR.

GENERAL SEWER NOTES

- WORK SHALL BE CONSTRUCTED ACCORDING TO THE STD. SPECIFICATIONS FOR PUBLIC WORKS CONSTRUCTION (1970 EDITION WITH 1971 SUPPLEMENT) AND COUNTY ENGINEER SPECIAL PROVISIONS FOR THE CONSTRUCTION OF SANITARY SEWERS DATED APRIL 7, 1970 AND SHALL BE PROSECUTED ONLY IN THE PRESENCE OF THE COUNTY ENGINEER.
- For Legend see Standard Plan S-1.
- Use extra strength Vitrified Clay Pipe. All pipe is standard depth, except as noted.
- Vitrified clay pipe joints shall be Type "D", "F", or "G" per Section 208-2 of Standard Specifications.
- "T" or "Y" branches may be used for connection to main line sewers, except as noted.
- All manholes shall be either brick manholes per S-3 or precast concrete manholes per Standard S-4, except as noted.
- Use locking manhole frames and covers per Standard Plan S-35, except as noted.
- Sewer pipe and appurtenances shall be abandoned in accordance with Section 306-3 of Standard Specifications.
- Sewers to be tested for leakage per Section 306-2.3.7 of Standard Specifications.
- Refer to section 7-10.41 of Std. Specs. regarding softy orders.
- Existing sewer services and flow shall be maintained at all times.
- No revisions shall be made to these plans without the approval of the County Engineer.
- The Contractor shall notify the Construction Division of the County Engineer by telephone 629-4747, Ext. 81551, at least 24 hours before starting any work under this contract.
- In addition to standards listed above, the following latest revised Standard Plans shall apply in the construction of this project: S-2, S-17, S-21, S-25, S-33.
- Use Case I Standard Bedding for Sewer Pipe per S-21.

- THE FOLLOWING LATEST REVISED STANDARD PLANS ON FILE IN THE OFFICE OF COUNTY ENGINEER SHALL APPLY IN THE CONSTRUCTION OF THIS PROJECT.
- LEGEND**
- S-1 MIN. PUBLIC SAFETY REQUIREMENTS
 - S-2 BRICK MANHOLE
 - S-3 RECONSTRUCTION OF BRICK M.H. TOPS
 - S-17 MANHOLE STEP
 - S-21 BEDDING FOR SEWER PIPE
 - S-22 SPECIAL SUPPORT AND PROTECTION
 - S-25 CRADLING AND ENCASUREMENT
 - S-26 STANDARD WYE OR TEE SUPPORT
 - S-28 ALLOWABLE TRENCH WIDTH
 - S-35 LOCKING M.H. FRAME AND COVER
 - S-36 NON REINF. PRECAST CONC. M.H.



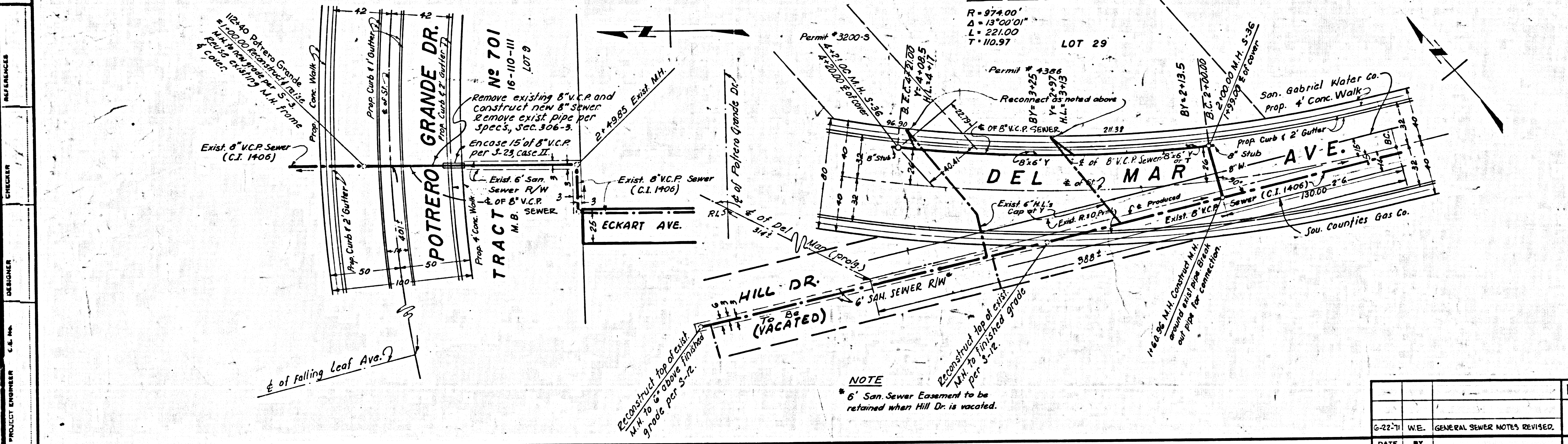
County Sanitation Districts shall be notified prior to the following so that required inspection can be made (Phone: 3371025)

- (X) Commencement of construction of manhole on District trunk sewer.
- (X) Breaking into existing manhole on District trunk sewer.
- (X) Core drilling District trunk sewer.
- (X) Construction of house connections to District trunk sewer.

(B) Acceptance of the project.

TRACT M.B. 16-110-111 No 701

SEWER CURVE DATA
 R = 974.00'
 Δ = 13°20'01"
 L = 221.00'
 T = 110.97'



NOTE
 6' San. Sewer Easement to be retained when Hill Dr. is vacated.

ROAD DEPARTMENT CASH CONTRACT No 41215 (43204)

PROFILE, GRADE, AND ALIGNMENT OF SANITARY SEWER TO BE CONSTRUCTED IN POTRERO GRANDE DRIVE

COUNTY OF LOS ANGELES

JOHN A. LAMBIE COUNTY ENGINEER
 DESIGNED BY [Signature] APPROVED: [Signature]
 8-19-65 (DATE)

JOHN D. PARKHURST
 CHIEF ENGINEER COUNTY SANITATION DIST. NO. 1
 APPROVED BY [Signature] OFFICE ENGINEER

REFERENCE	LAYOUT	RECORD PLANS
W.D. 36	TRACES	
R.D.F. 501	CHECKED	Hand
R.D.L.B. 501	INSPECTOR	

LOS ANGELES COUNTY ROAD DEPARTMENT

HIGHWAY DIVISION
 JOB NAME: POTRERO GRANDE DR.
 LIMITS: ARROYO DR. TO SAN GABRIEL BLVD.

DATE: 6-22-71 WE: GENERAL SEWER NOTES REVISED.
 JOB NO. 41215 (2551)
 SHEET 22 OF 22 SHTS.
 DWG. NO. # 56150