

B.M. 51 1626 ELEV. 1568.150
 4" x 4" 8" 8" CAP W. END IN HOV. OFFER ONLY NO.
 4-11-24 LOC. SCOFF W/IN ALG. OR FROM OVERPASS
 ABOVE ALL SPUR OR 10' x 4" 4" OF CTE. TEASER
 8" 8" CRESTS BEING 0.141 ONLY ALG. OR OPENING ON
 ED FROM JCT WITH LOFT ON ED MKD C.J. - 850 1955
 NEWHALL QUAD. 19 58

FOR THE NEWHALL COUNTY WATER DISTRICT
 APPROVED BY: *J.V. Tallon* Date 5-10 1968
 J.V. TALLON P.E. No. 7204
 CHIEF ENGINEER AND GENERAL MANAGER
 NEWHALL COUNTY WATER DISTRICT

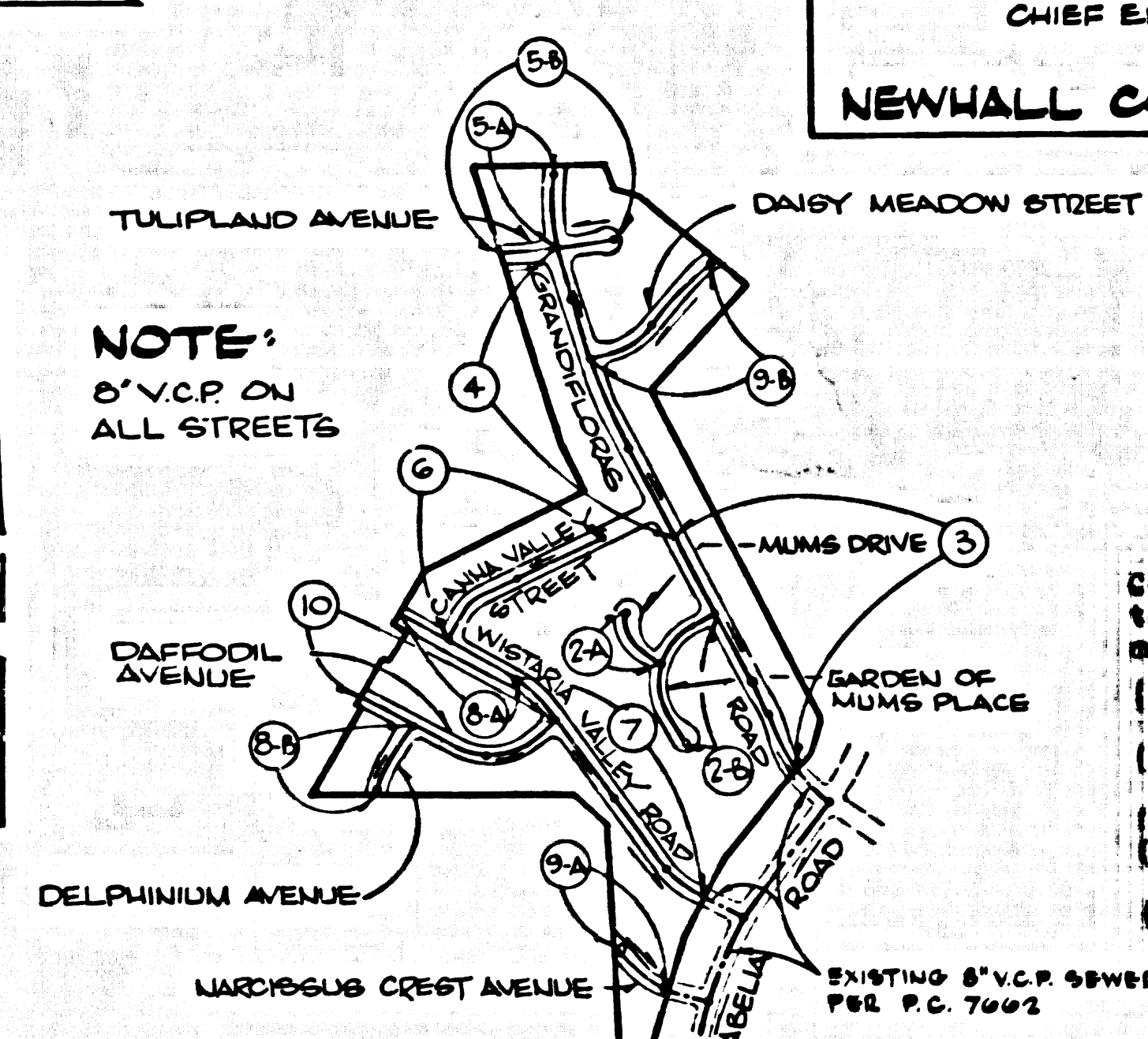
DOUBLE SCALE
 NEWHALL BLDG. DIST. NO. 82

PROFILE ALIGNMENT AND GRADE OF P.C. 8046
 SANITARY SEWERS PAGE 1
 CONSTRUCTED IN
 TRACT No 26023

PRIVATE CONTRACT NO. 8046

W.S. 79
 5 SHEETS, 10 PAGES
 SCALE: HORIZ. 1" = 40' VERT. 1" = 4'
 MARCH 1, 1968
 PREPARED BY THE OFFICES OF
 ENGINEERING SERVICE CORPORATION
 1127 N. WASHINGTON BLDG., LOS ANGELES, CALIF.
 BY: *J.K. Penilla*
 REG. C.E. NO. 13025
 FOR LEGEND SEE PLAN NO. S-1

39998



INDEX MAP
 TRACT No 26023
 P.C. 8046
 SCALE 1" = 600'

ALL FILL TO BE IN PLACE
 PRIOR TO SEWER CONST.

- County Sanitation Districts shall be notified prior to the following so that required inspection can be made (Those):
- (1) Commencement of construction of manhole on District trunk sewer.
 - (2) Working into existing manhole on District trunk sewer.
 - (3) Core drilling District trunk sewer.
 - (4) Construction of house connections to District trunk sewer.
 - (5) Acceptance of the project.

Any connection to the sewage system of County Sanitation District, provided directly or indirectly by the sewer shown on these plans, shall be considered a temporary connection until all area covered is annexed to said district, at which time the connection shall become permanent. If for any reason the annexation to the district of any area covered hereunder is not completed, the property not in the district will be required to disconnect and a contract is entered into with the district providing for the disposal of sewage from the area.

- NOTES:
1. PROFILE STAKES ON THE PROPERTY LINE OR PROPERTY LINES PRODUCED AT RIGHT ANGLES TO THE SEWER LINE AT THE CENTER LINE OF EACH MANHOLE.
 2. NO REPRESENTATIVE OF THE COUNTY ENGINEER WILL SURVEY OR LAY OUT ANY PORTION OF THE WORK.
 3. THE PRIVATE ENGINEER SHALL FURNISH THE COUNTY ENGINEER WITH GRADE SHEETS AND STATIONING FOR ALL HOUSE LATERALS AND T OR Y BRANCHES AND SHALL PROVIDE STAKES FOR THEM AT THEIR PROPER LOCATIONS WITH ESTABLISHED PLAINLY MARKED. ALL HOUSE LATERALS SHALL BE CONSTRUCTED IN A STRAIGHT ALIGNMENT AT RIGHT ANGLES FROM THE MAIN LINE SEWER EXCEPT AS SHOWN ON THE PLANS. ANY CHANGE IN ALIGNMENT SHALL BE REQUESTED IN WRITING BY THE PRIVATE ENGINEER.
 4. THE PRIVATE ENGINEER SHALL FURNISH THE HOUSE LATERAL DEPTH AT THE PROPERTY LINE BELOW THE TOP OF CURB ELEVATION FOR EACH HOUSE LATERAL ON THE GRADE SHEET.
 5. NO REVISIONS SHALL BE MADE IN THESE PLANS WITHOUT THE APPROVAL OF THE COUNTY ENGINEER.
 6. THE CONTRACTOR SHALL NOTIFY THE COUNTY ENGINEER BY TELEPHONE, RADIOSH 9-07-07, EXT. 81531, AT LEAST TWENTY-FOUR HOURS BEFORE STARTING ANY WORK UNDER THE CONTRACT.
 7. MANHOLES SHALL BE BRICK SEWER STRUCTURES PER S-5 OR PRECAST CONCRETE MANHOLES PER S-5 OR S-6 EXCEPT AS NOTED.
 8. USE STANDARD MANHOLE FRAMES AND COVERS, S-18, EXCEPT AS NOTED.
 9. MANHOLE TOPS IN UNIMPROVED RIGHTS OF WAY TO BE SIX INCHES ABOVE FINISHED GRADE.
 10. USE EXTRA STRENGTH PIPE, ALL PIPE BE STANDARD DEPTH EXCEPT AS NOTED.
 11. VITRIFIED CLAY PIPE JOINTS SHALL BE TYPE "D" 18" OR 24" PER STD. SPEC. SEC. 208-2.
 12. IF A POWER POLE IS WITHIN THREE FEET OF THE SEWER, THE SEWER SHALL BE ENCASED, PER S-25, TWO FEET ON EACH SIDE FROM THE POINT OF INTERFERENCE.
 13. IF DURING THE COURSE OF CONSTRUCTION IT IS DETERMINED THAT THERE IS LESS THAN FOUR FEET OF COVER OVER THE TOP OF A MAIN LINE OR HOUSE LATERAL V.C.P. IN WHICH IS NOT INDICATED ON THE PLANS, THE PIPE SHALL BE ENCASED PER S-25 UNLESS OTHERWISE APPROVED BY THE COUNTY ENGINEER.
 14. HOUSE LATERALS TO BE CONSTRUCTED WITH INVERTS AT PROPERTY LINE... REF. SHOW CURB GRADE EXCEPT AS NOTED.
 15. SURFACE ALL TRENCHES WITHIN PAVED AREAS TO MEET L.A. COUNTY ROAD DEPT. SPEC. 404.04(4)(7)(B) IN ACCORDANCE WITH PERMITS.
 17. SEWERS TO BE TESTED FOR LEAKAGE PER SECTION 506-2.5 STANDARD SPECIFICATIONS.
 18. ALL STATE AND LOCAL TRAFFIC SAFETY CODES WILL BE STRICTLY ENFORCED.
 20. SEWER PIPE BEDDINGS SHALL CONFORM TO S-51 THE FOLLOWING COUNTY SPECIFIC STD. PLANS APPLY TO THIS PROJECT:

LEGEND

MINIMUM PUBLIC SAFETY REQUIREMENTS	S-1
PIPE MANHOLE	S-2
PRECAST CONCRETE MANHOLE	S-3
REINFORCED PRECAST CONCRETE MANHOLE	S-4
MANHOLE FRAME AND CONCRETE MANHOLE	S-5
MANHOLE STEP	S-6
SECONDARY SEWER PIPE	S-7
CRAPPING AND ENCASEMENT	S-8
WYLLIAMS PIPE	S-9
SPECIAL HOUSE LATERALS	S-10
SPECIAL SUPPORT AND PROTECTION	S-11

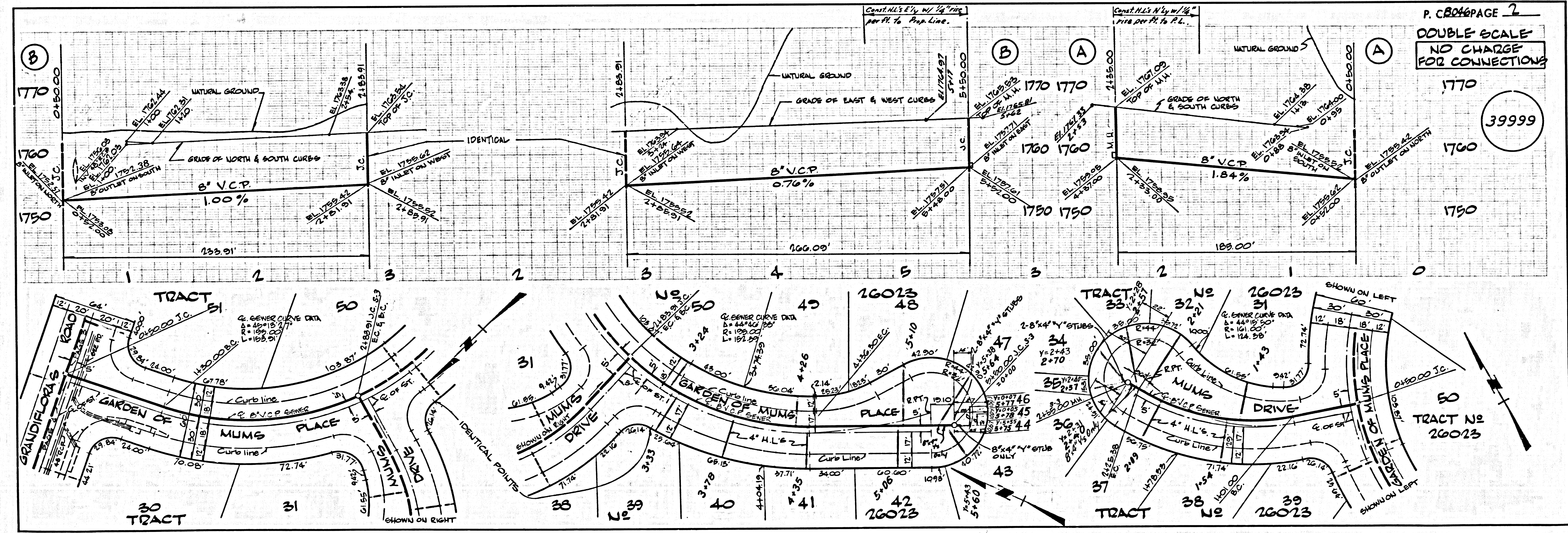
REVISION
 Revised with location from Sta. 1195.50 to 1204.00 Due to Interference with 12" 2" 2" Cable on Page 34. Also Plotted AT&T Cable on Pages 5 & 7.
 Approved: *John Lambie* Date: 7-10-68

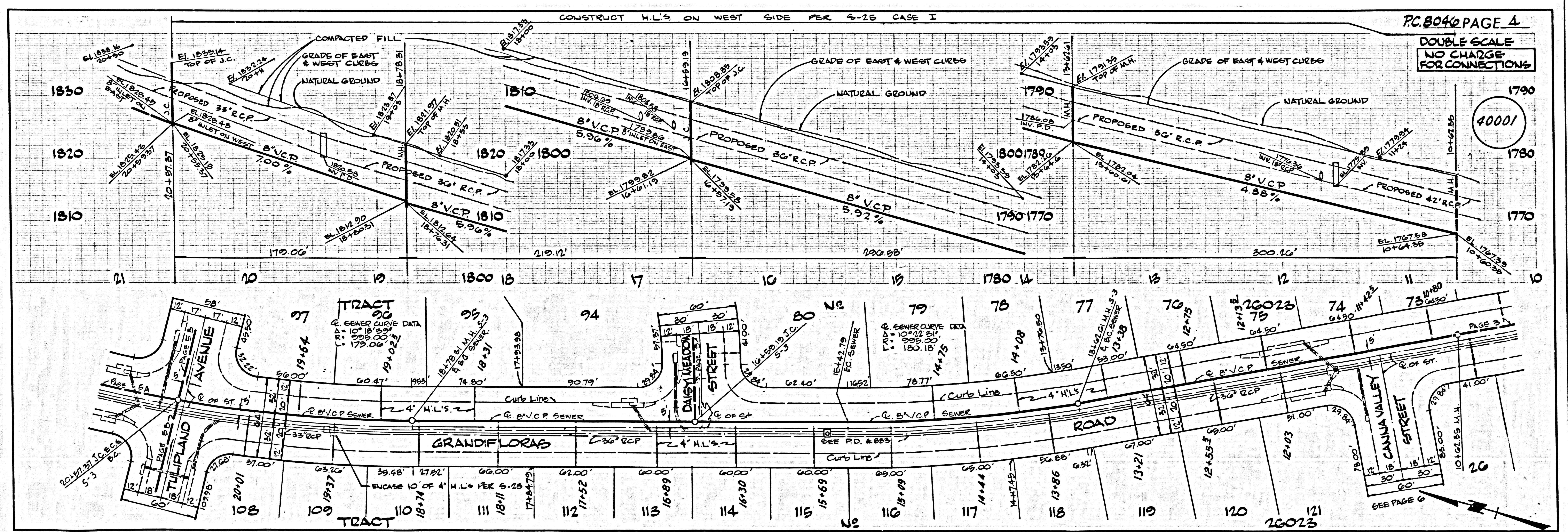
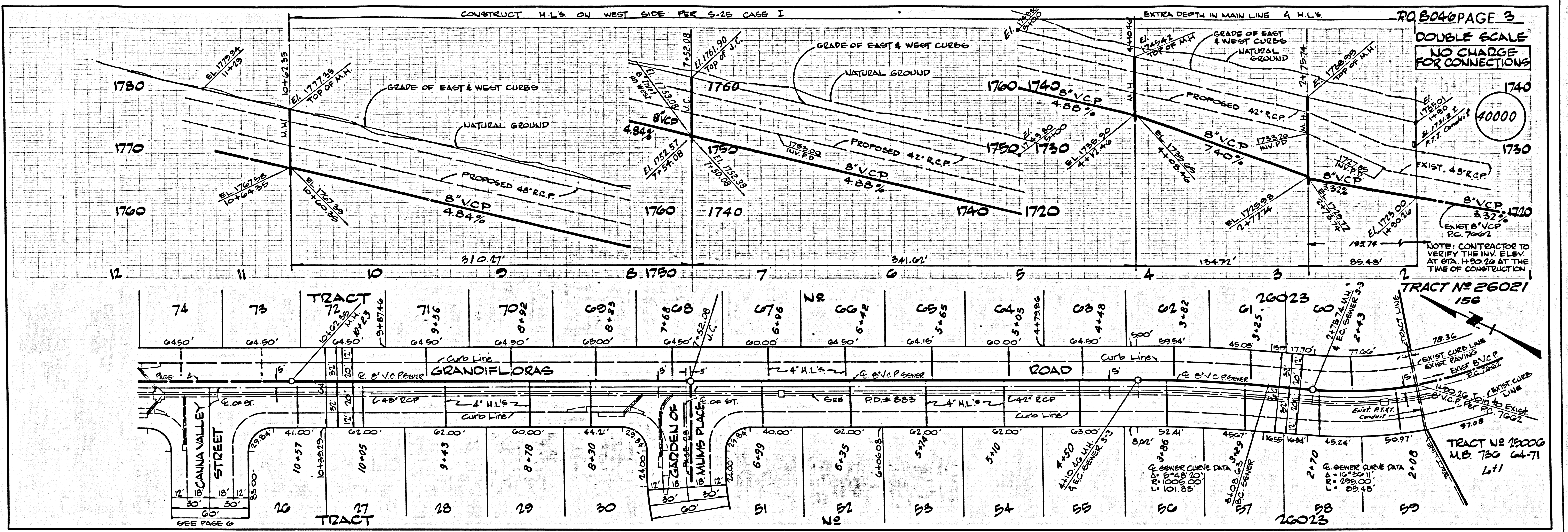
T BRANCHES MAY BE USED INSTEAD OF Y BRANCHES IN ALL LOCATIONS EXCEPT AS NOTED.

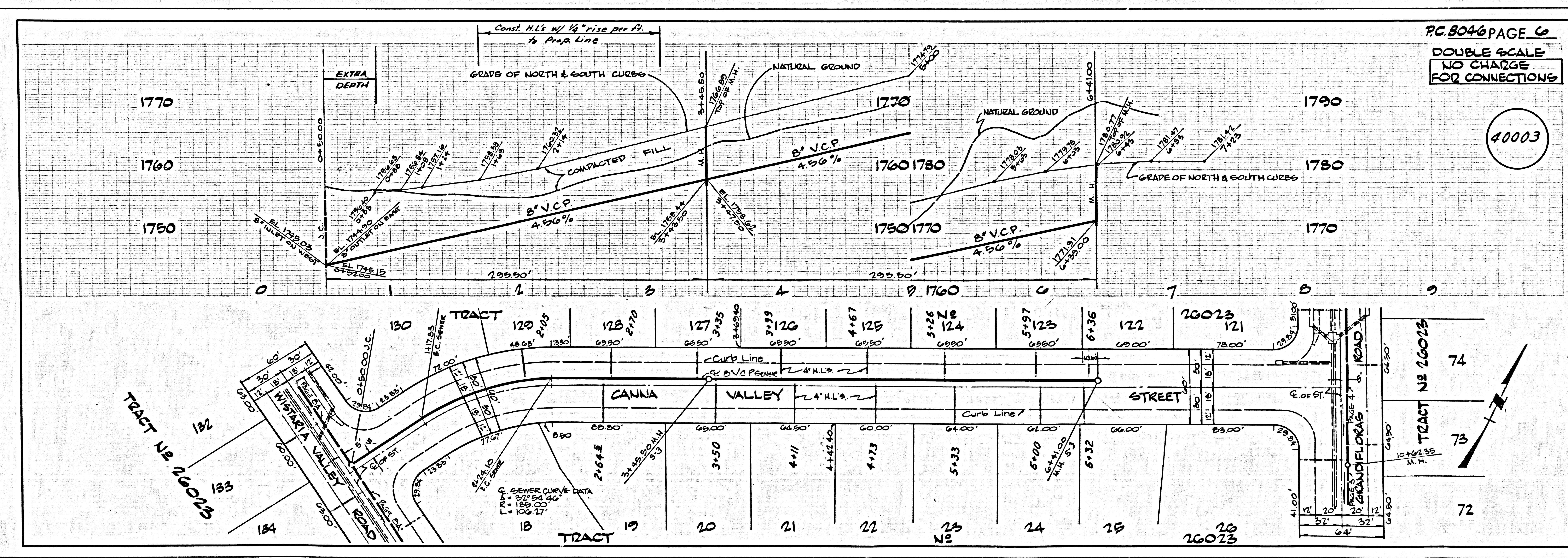
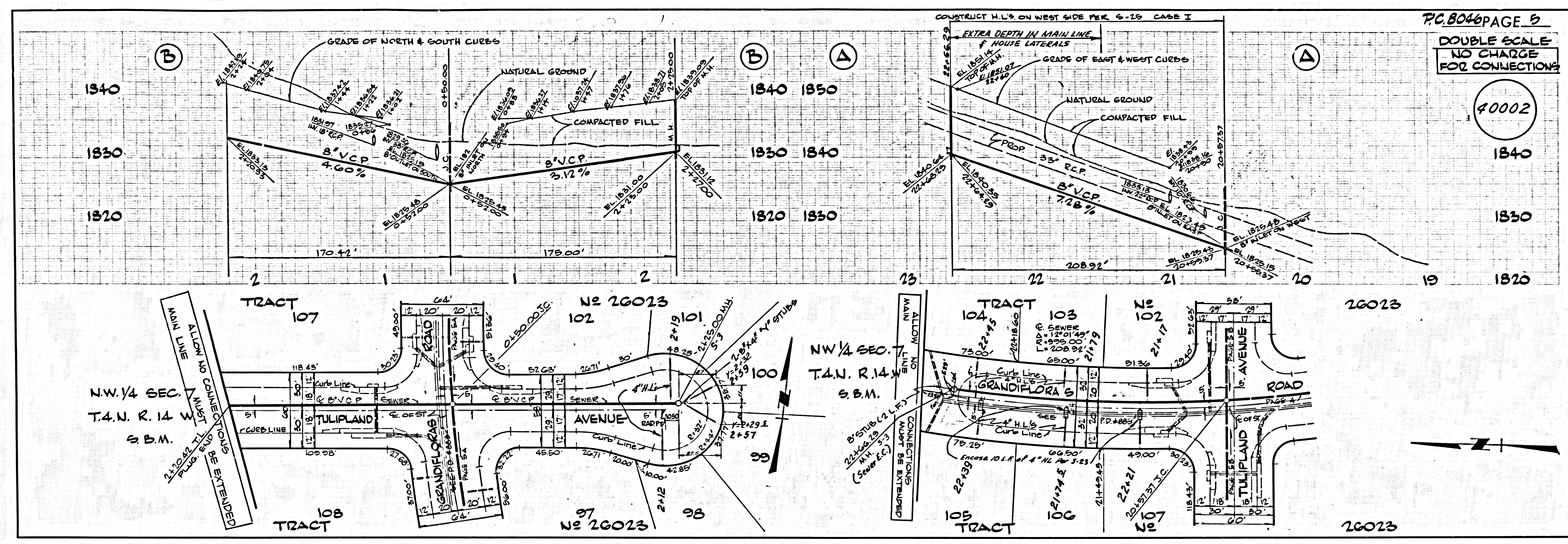
GRADES TO WHICH THIS IMPROVEMENT IS TO BE CONSTRUCTED ARE SHOWN ON PLANS AND PROFILES. GRADE POINTS FOR TOP OF CURBS, CENTER LINE OF STREETS, OR CENTER LINE OF ALLEYS ARE SHOWN BY CIRCLES ON PROFILES. AT ALL POINTS BETWEEN DESIGNATED POINTS THE GRADE SHALL BE ESTABLISHED SO AS TO CONFORM TO A STRAIGHT LINE DRAWN BETWEEN SAID DESIGNATED POINTS. ELEVATIONS ARE IN FEET ABOVE U.S.C. & G.S. SEA LEVEL DATUM OF 1929.

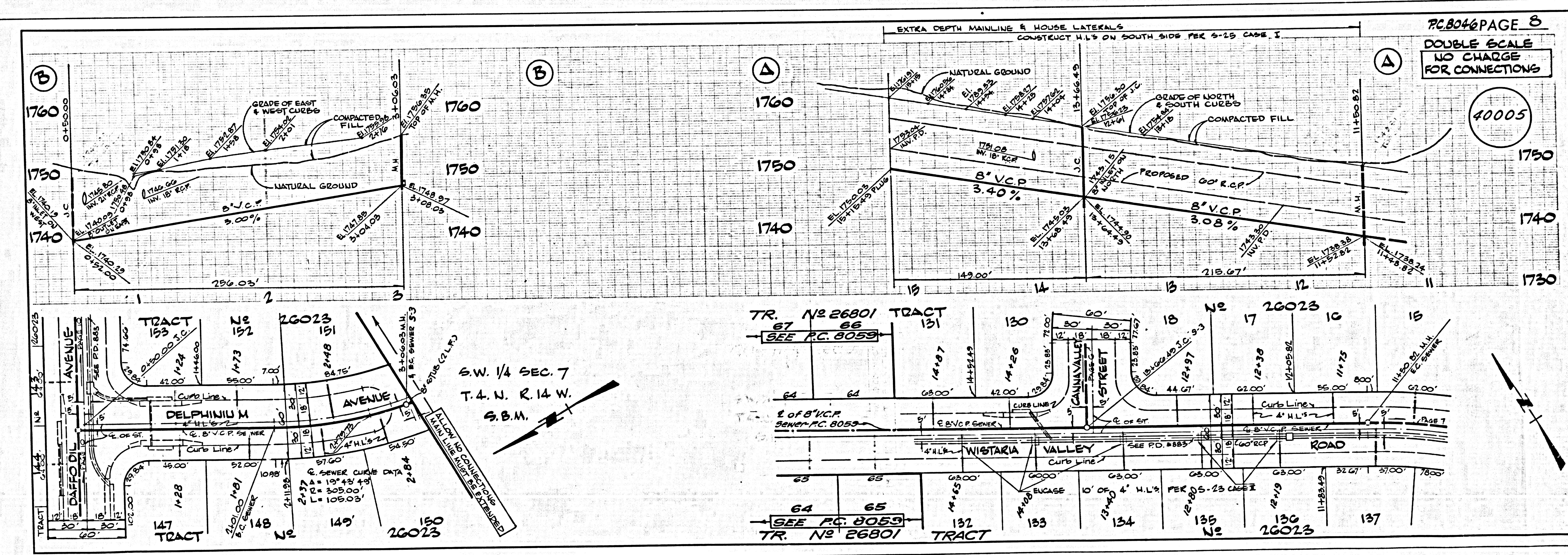
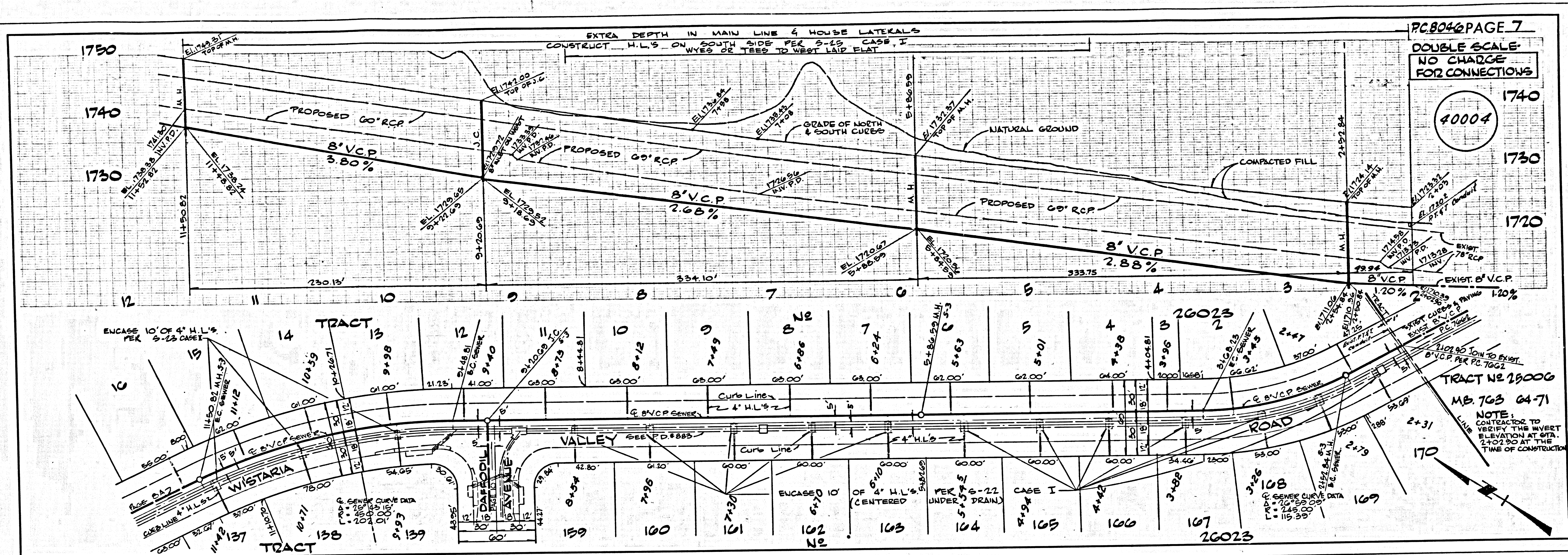
COUNTY OF LOS ANGELES, CALIFORNIA
 JOHN A. LAMBIE, COUNTY ENGINEER
 APPROVED BY: *Sally Williams*
 COUNTY ENGINEER

J.N. 0130.02









PC.8046

