

B.M. 51.642 ELEV. 1262.07
 Road Dept. B.M. Top No. Side Conc. base
 of NE Cor. Edison High Tension Tower
 2' N-31° W-31.35' S-4' Lyons Avenue
 and 1' 30" E-4' Wiley Canyon Road
 NEWHALL QUAD. 19 58

SPECIAL NOTES:
 1) The Contractor for this project is responsible for adjusting all M.M. tops to flush with paving surface of roads in proposed Tract No. 26915 prior to final acceptance of this sewer.
 2) All grading is to be completed by others prior to start of Sewer construction.

NOTE: CONTRACTOR MUST MAINTAIN EXISTING SEWER SERVICE AT ALL TIMES ON PAGES 5, 6, 7, 17 AND 18.

**DOUBLE SCALE
 NEWHALL BLDG. DIST. NO. 82**

PROFILE, ALIGNMENT AND GRADE OF
SANITARY SEWERS PAGE 1
 TO BE CONSTRUCTED IN
**TRACT NO. 26885
 AND TRACT NO. 26915**

PRIVATE CONTRACT NO. 8048

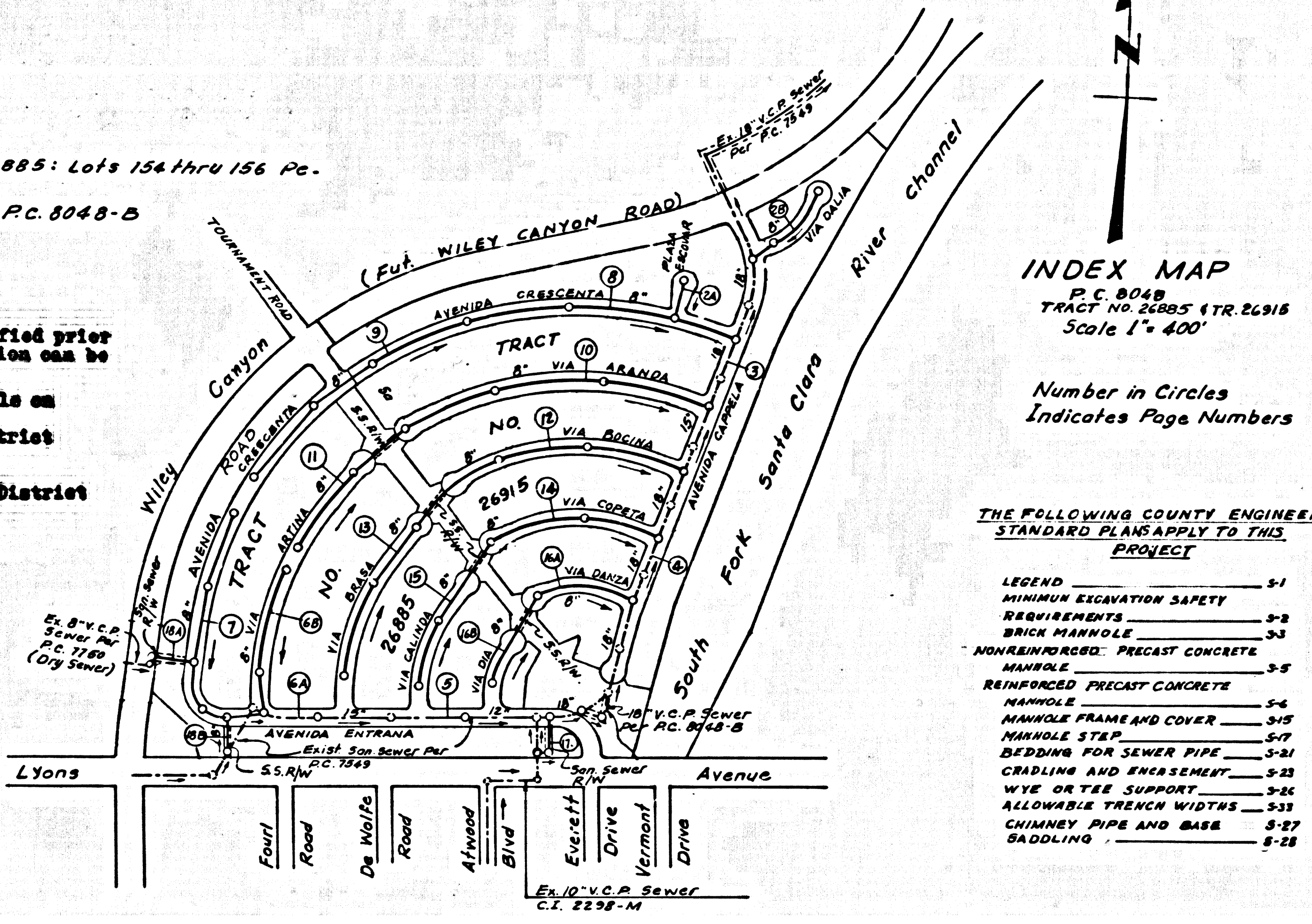
W.S. 62
 3 SHEETS, 18 PAGES
 SCALE: VERT. 1"=8'
 HORIZ. 1"=40'
 MARCH, 1968
 PREPARED IN THE OFFICES OF
VOORHEES-TRINDLE CO.
 5919 Van Nuys Blvd., Van Nuys California
 REG. C.E. NO. 2673

40361

Lots not Served. From Tract 26885: Lots 154 thru 156 Pe-
 desian Walkway.
 Lot 153 Recreation Area served on P.C. 8048-B

- County Sanitation Districts shall be notified prior to the following so that required inspection can be made (Phone 247-1055)
- (1) Commencement of construction of manhole on District trunk sewer.
 - (2) Breaching into existing manhole on District trunk sewer.
 - (3) Commencing drilling District trunk sewer.
 - (4) Construction of house connections to District trunk sewer.
 - (5) Acceptance of the project.

NO CONNECTIONS FOR THE DISPOSAL OF INDUSTRIAL WASTES SHALL BE MADE TO SEWERS SHOWN ON THESE DRAWINGS WITHOUT WRITTEN PERMISSION FROM THE CHIEF ENGINEER AND GENERAL MANAGER OF THE COUNTY SANITATION DISTRICTS.



THE FOLLOWING COUNTY ENGINEER STANDARD PLANS APPLY TO THIS PROJECT

LEGEND	1-1
MINIMUM ELEVATION SAFETY REQUIREMENTS	1-2
BRICK MANHOLE	1-3
MANHOLE	1-4
REINFORCED PRECAST CONCRETE MANHOLE	1-5
MANHOLE FRAME AND COVER	1-6
MANHOLE STEP	1-7
BEDDING FOR SEWER PIPE	1-8
CRADLING AND SAND BEDDING	1-9
WYE OR TEE SUPPORT	1-10
ALLOWABLE TRENCH WIDTHS	1-11
CONCRETE PIPE AND BASE	1-12
BEDDING	1-13

- NOTES:**
1. PROVIDE STAKES ON THE PROPERTY LINE OR PROPERTY LINES PRODUCED AT RIGHT ANGLES TO THE SEWER LINE AT THE CENTER LINE OF EACH MANHOLE.
 2. NO REPRESENTATIVE OF THE COUNTY ENGINEER WILL SURVEY OR LAY OUT ANY PORTION OF THE WORK.
 3. THE PRIVATE ENGINEER SHALL FURNISH THE COUNTY ENGINEER WITH GRADE SHEETS AND STATIONINGS FOR ALL HOUSE LATERALS AND T-BRANCHES AND SHALL PROVIDE STAKES FOR THEM AT THEIR PROPER LOCATIONS WITH STATIONING PLAINLY MARKED. ALL HOUSE LATERALS SHALL BE CONSTRUCTED IN A STRAIGHT ALIGNMENT AT RIGHT ANGLES FROM THE MAIN LINE SEWER EXCEPT AS SHOWN ON THE PLANS. HOUSE LATERALS FROM CHIMNEYS SHALL NOT HAVE AN ANGLE OF LESS THAN 45° WITH THE MAIN LINE SEWER. ANY CHANGE IN ALIGNMENT SHALL BE REQUESTED BY WRITING BY THE PRIVATE ENGINEER.
 4. THE PRIVATE ENGINEER SHALL FURNISH THE HOUSE LATERAL DEPTH AT THE PROPERTY LINE BELOW THE TOP OF CURB ELEVATION FOR EACH HOUSE LATERAL ON THE GRADE SHEET.
 5. NO REVISIONS SHALL BE MADE IN THESE PLANS WITHOUT THE APPROVAL OF THE COUNTY ENGINEER.
 6. THE CONTRACTOR SHALL NOTIFY THE CONSTRUCTION DIVISION BY TELEPHONE, MANDAY 8-60, EXT. 8158, AT LEAST TWENTY-FOUR HOURS BEFORE STARTING ANY WORK UNDER THIS CONTRACT.
 7. ALL STRUCTURES SHALL BE EITHER BRICK MANHOLES PER S-2 OR PRECAST CONCRETE MANHOLES PER S-2-2, EXCEPT AS NOTED.
 8. "T" OR "Y" BRANCHES MAY BE USED FOR CONNECTIONS TO MAIN LINE SEWERS, EXCEPT AS NOTED.
 9. MANHOLE TOPS ON UNIMPROVED RIGHTS-OF-WAY TO BE 6" ABOVE FINISHED GRADE.
 10. USE EXTRA STRENGTH PIPE. ALL PIPE IS STANDARD DEPTH EXCEPT AS NOTED.
 11. VITRIFIED CLAY PIPE JOINTS SHALL BE TYPE "D", "D-1" PER STANDARD SPEC'S SEC. 208-2.
 12. IF A POWER POLE IS WITHIN THREE FEET OF THE SEWER, THE SEWER SHALL BE ENCASED, PER S-2-3, TWO FEET ON EACH SIDE FROM THE POINT OF INTERFERENCE.
 13. IF DURING THE COURSE OF CONSTRUCTION IT IS DETERMINED THAT THERE IS LESS THAN FOUR FEET OF COVER OVER THE TOP OF A MAIN LINE OR HOUSE LATERAL V.C.P. SEWER WHICH IS NOT INDICATED ON THE PLANS, THE PIPE SHALL BE ENCASED PER S-2-3, UNLESS OTHERWISE APPROVED BY THE COUNTY ENGINEER.
 14. HOUSE LATERALS TO BE CONSTRUCTED WITH MOTORS AT PROPERTY LINE 4 FEET BELOW CURB GRADE EXCEPT AS NOTED.
 15. RESURFACE ALL TRENCHES WITHIN PAVED AREAS TO MEET L.A. COUNTY ROAD DEPT. OR CALIFORNIA STATE HIGHWAY REQUIREMENTS IN ACCORDANCE WITH PERMITS.
 16. SEWERS TO BE TESTED FOR LEAKAGE PER SEC. 304-2.3.7 OF STANDARD SPECIFICATIONS.
 17. ALL STATE AND LOCAL TRENCH SAFETY ORDERS WILL BE STRICTLY ENFORCED.

NOTICE TO CONTRACTOR

The existence and location of any underground utility pipes or structures shown on these plans are obtained by a search of the available records. To the best of our knowledge there are no existing utilities except as shown on these plans. The contractor is required to take due precautionary measures to protect the utility lines shown and any other lines (of record or not shown on these plans).

NOTE "A": PRIOR TO ISSUANCE OF A HOUSE CONNECTION PERMIT FOR THE GAS STATION SITE CONTACT SANITATION DIVISION

REVISIONS

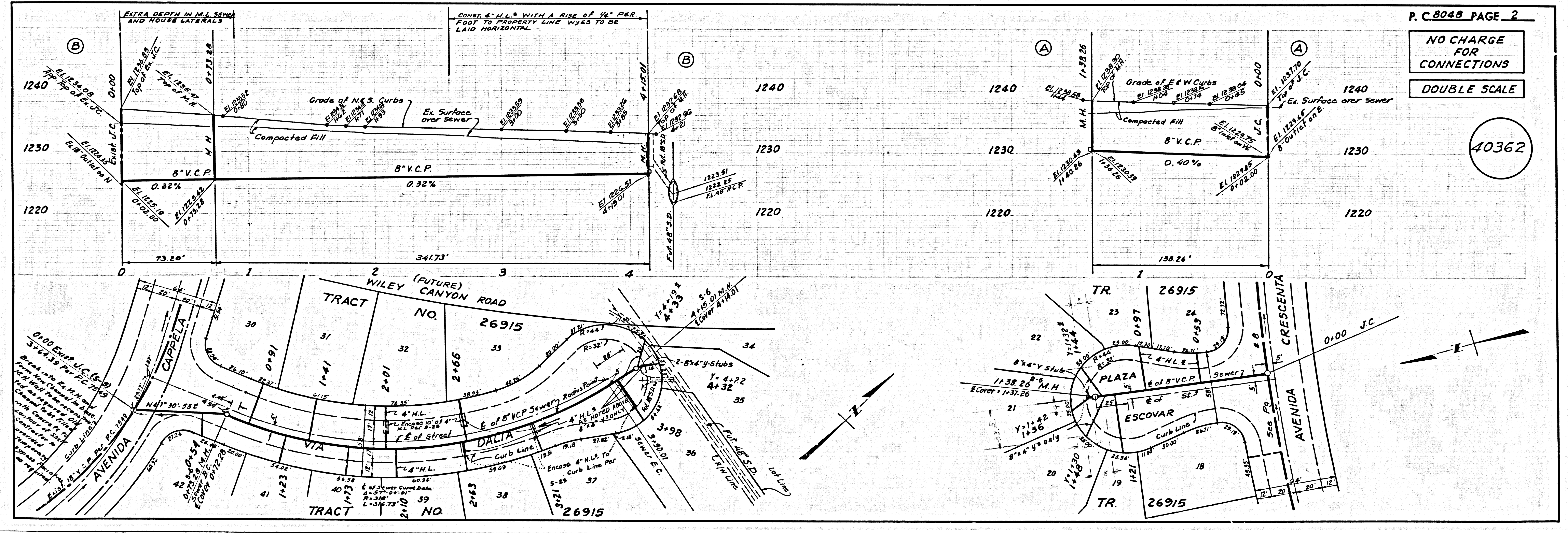
1. Remove M.L. From Lot 150 of Tr. 26885 (Pedestrian Walk)
2. Revise to show inclusion of Tr. 26915

APPROVED BY: *[Signature]* OFFICIAL ENGINEER

CHECKED BY: *[Signature]* M.S.E. NO. 2802

OFFICE OF THE COUNTY ENGINEER 6/5/68 1968
 R.C.E. DATE

J.N.0250.02



P.C. 8048 PAGE 2
 NO CHARGE FOR CONNECTIONS
 DOUBLE SCALE
 40362

