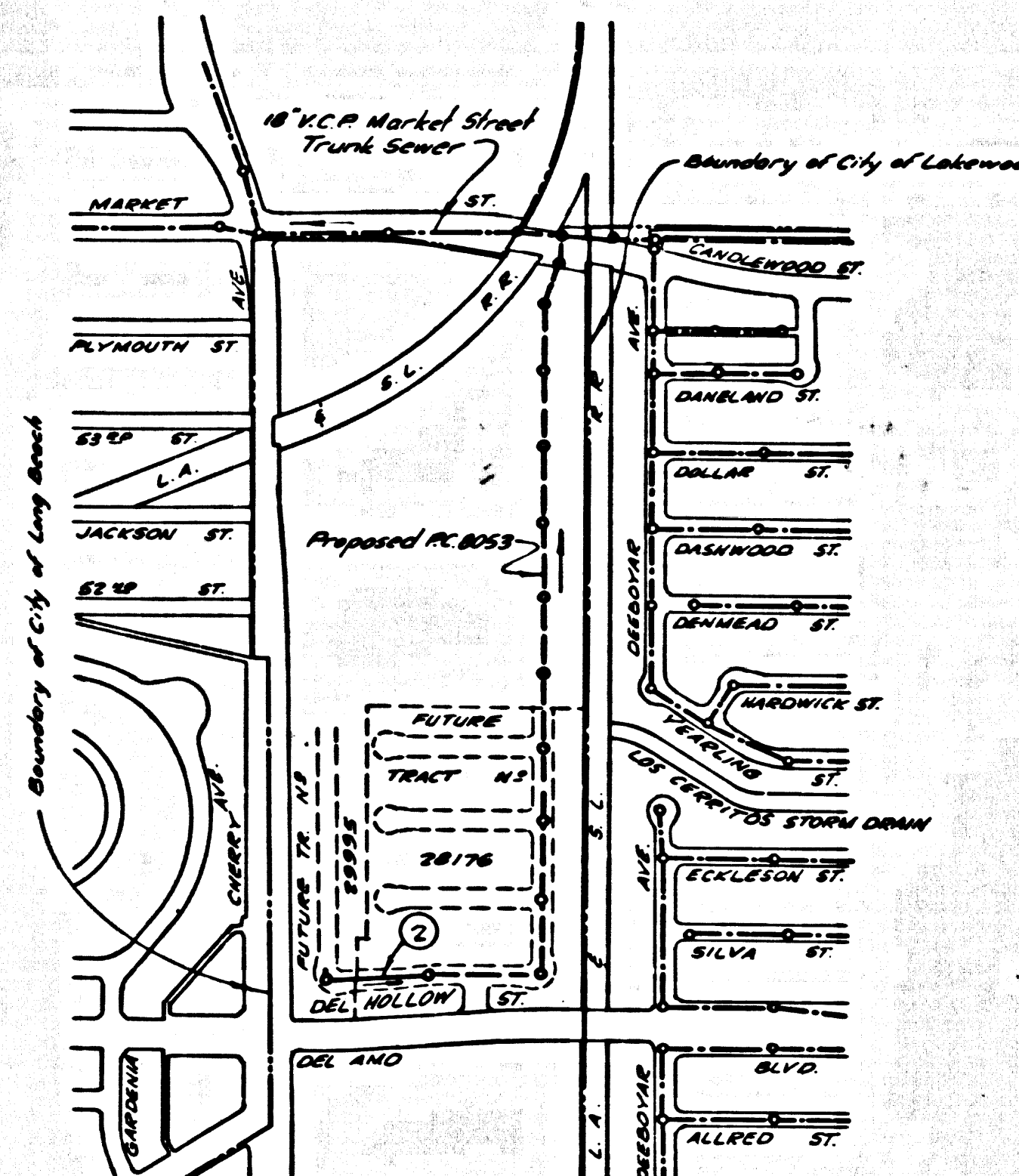


B.M. BY 7107 ELEV. 48.659  
 L & T. E. curb of B.C.R. at S.E. corner  
 Paramount Blvd. & Condellwood St.  
 66 17.5 S. & 40 11.5 E. of Int.  
 BASELINE QUAD. 1965  
 (DELLFLOWER QUAD.)



INDEX MAP  
 SCALE 1/400  
 P.C. 8052

THE FOLLOWING COUNTY ENGINEER STANDARD PLANS APPLY TO THIS PROJECT:

- S-1 LEGEND
- S-2 MINIMUM EXCAVATION SAFETY REQUIREMENTS
- S-3 BRICK MANHOLE
- S-4 MANHOLE FRAME AND COVER
- S-5 STANDARD MANHOLE STEPS
- S-6 BEDDING FOR SEWER PIPE
- S-7 SLOPING AND ENCASING
- S-8 PIPE SUPPORT
- S-9 STUPPERS
- S-33 ALLOWABLE TRENCH WIDTHS

County Sanitation Districts shall be notified prior to the following so that required inspection can be made (Phone)

- (1) Commencement of construction of manhole on District Trunk Sewer
- (2) Breaking three existing manhole on District Trunk Sewer
- (3) Core drilling District Trunk Sewer
- (4) Construction of house connections to District Trunk Sewer
- (5) Acceptance of the project.

DO NOT CONNECT HOUSES TO SEWER UNTIL THIS SEWER (P.C. 8052) AND SEWERS TO BE CONSTRUCTED PER PRIVATE CONTRACT 8053 ARE ACCEPTABLE FOR PUBLIC USE AS DETERMINED BY THE COUNTY ENGINEER.

NO CONNECTIONS FOR THE DISPOSAL OF INDUSTRIAL WASTES SHALL BE MADE TO SEWERS SHOWN ON THESE DRAWINGS WITHOUT WRITTEN PERMISSION FROM THE CHIEF ENGINEER AND GENERAL MANAGER OF THE COUNTY SANITATION DISTRICTS.

LAKWOOD BLDG. DIST. NO. 401

- NOTES:
1. PROVIDE STAKES ON THE PROPERTY LINE OR PROPERTY LINES PRODUCED AT RIGHT ANGLES TO THE SEWER LINE AT THE CENTER LINE OF EACH MANHOLE.
  2. NO REPRESENTATIVE OF THE COUNTY ENGINEER WILL SURVEY OR LAY OUT ANY PORTION OF THE WORK.
  3. THE PRIVATE ENGINEER SHALL FURNISH THE COUNTY ENGINEER WITH GRADE SHEETS AND STATIONING FOR ALL HOUSE LATERALS AND "Y" BRANCHES AND SHALL PROVIDE STAKES FOR THEM AT THEIR PROPOSED LOCATIONS WITH STATIONING PLAINLY MARKED. ALL HOUSE LATERALS SHALL BE CONSTRUCTED IN A STRAIGHT ALIGNMENT AT RIGHT ANGLES FROM THE MAIN LINE SEWER EXCEPT AS SHOWN ON THE PLANS. HOUSE LATERALS FROM CHIMNEYS SHALL NOT HAVE AN ANGLE OF LESS THAN 45° WITH THE MAIN LINE SEWER. ANY CHANGE IN ALIGNMENT SHALL BE REQUESTED IN WRITING BY THE PRIVATE ENGINEER.
  4. THE PRIVATE ENGINEER SHALL FURNISH THE HOUSE LATERAL DEPTH AT THE PROPERTY LINE BELOW THE TOP OF CURB ELEVATION FOR EACH HOUSE LATERAL ON THE GRADE SHEET.
  5. NO REVISIONS SHALL BE MADE IN THESE PLANS WITHOUT THE APPROVAL OF THE COUNTY ENGINEER.
  6. THE CONTRACTOR SHALL NOTIFY THE CONSTRUCTION DIVISION BY PHONE, RADPHONE, 9-4-42, EXT. 81541, AT LEAST TWENTY-FOUR HOURS BEFORE STARTING ANY WORK UNDER THIS CONTRACT.
  7. MANHOLES SHALL BE BRICK SEWER STRUCTURES PER S-2, AS SHOWN ON PLANS.
  8. USE STANDARD MANHOLE FRAMES AND COVERS, S-1.
  9. MANHOLE TOPS TO BE AT FINISHED GRADE.
  10. USE EXTRA STRENGTH PIPE. ALL PIPE IS STANDARD DEPTH.
  11. VERIFIED CLAY PIPE JOINTS SHALL BE TYPE "D", OR "D" PER E.T.D. SPEC. SEC. 208-2.
  12. IF A POWER POLE IS WITHIN THREE FEET OF THE SEWER, THE SEWER SHALL BE ENCASED, PER S-23, TWO FEET ON EACH SIDE FROM THE POINT OF INTERFERENCE.
  13. IF DURING THE COURSE OF CONSTRUCTION IT IS DETERMINED THAT THERE IS LESS THAN FOUR FEET OF COVER OVER THE TOP OF A MAIN LINE OR HOUSE LATERAL V.C.P. SEWER WHICH IS NOT INDICATED ON THE PLANS, THE PIPE SHALL BE ENCASED PER S-23, UNLESS OTHERWISE APPROVED BY THE COUNTY ENGINEER.
  14. HOUSE LATERALS TO BE CONSTRUCTED WITH 1/8" RISE PER FOOT TO THE PROPOSED PROPERTY LINE.
  15. REBARFACE ALL TRENCHES WITHIN PAVED AREAS TO MEET L.A. COUNTY ROAD DEPT. OR CALIFORNIA STATE HIGHWAY REQUIREMENTS IN ACCORDANCE WITH PERMITS.
  16. SEWERS TO BE TESTED FOR LEAKAGE PER SECTION 806 - 2, 3, 7 STANDARD SPECIFICATIONS.
  17. ALL STATE AND LOCAL TRENCH SAFETY ORDERS WILL BE STRICTLY ENFORCED.
  18. SPECIAL BACKFILL IN DESIGNATED AREAS (UNSATISFACTORY TRENCH AND REPLACE OTHER EARTH REMOVED SO AS TO ACHIEVE THE NATURAL OR FINISHED GRADES AND SLOPES SHOWN IN THE BUILDING PLAN APPROVED FOR THIS TRACT BY THE BUILDING AND SAFETY DIVISION.) (ALL BACKFILL AND EARTH REPLACED SHALL BE COMPACTED TO A MINIMUM OF 90% OF MAXIMUM DENSITY PER A 3" STANDARD METHOD OF TEST C-131-571 AS INDICATED. ACCEPTABLE CERTIFICATION OF SUCH COMPACTION SHALL BE SUBMITTED TO THE CONSTRUCTION DIVISION.)
  19. ALL JOINTS BETWEEN CAST IRON PIPE AND VERIFIED CLAY PIPE SHALL BE MADE WITH A RUBBER SLEEVE JOINT, TYPE "D" OR "D" WITH BUSHING AS INDICATED PER STANDARD SPECIFICATIONS SECTION 208-2.

COLLECT CHARGES AS INDICATED

NOTICE TO CONTRACTOR

The assistance and location of any underground utility pipes or structures shown on these plans are obtained by a search of the available records to the best of my knowledge; there are no existing utilities except as shown on these plans. The contractor is required to take due precautionary measures to protect the utility lines shown and any other lines not of record or not shown on these plans.

PROFILE, ALIGNMENT AND GRADE OF SANITARY SEWERS PAGE 1

TO BE CONSTRUCTED IN  
 (FUTURE TRACT NR 28176)  
 (AND FUTURE TRACT NR 29995)  
 (DEL HOLLOW STREET)

PRIVATE CONTRACT NO. 8052

W.S. 30  
 1 SHEET 2 PAGES  
 SCALE: HORIZ. 1" = 40' VERT. 1" = 4' MARCH, 1968

PREPARED IN THE OFFICES OF  
 H.M. SCOTT & ASSOCIATES, INC.

FOR LEGEND SEE PLAN NO. S-1

NOTE:  
 GRADE TO WHICH THE IMPROVEMENT IS TO BE CONSTRUCTED ARE SHOWN ON PLANS AND PROFILES. GRADE POINTS FOR TOP OF CURBS, CENTER LINE OF STREETS, OR CENTER LINE OF ALLEYS ARE SHOWN BY CIRCLES ON PROFILES. AT ALL POINTS BETWEEN DESIGNATED POINTS THE GRADE SHALL BE ESTABLISHED SO AS TO CONFORM TO A STRAIGHT LINE DRAWN BETWEEN SAID DESIGNATED POINTS. REVISIONS ARE IN PENCIL UNLESS OTHERWISE INDICATED. COUNTY ENGINEER'S SIGNATURE AND POSITION ARE NOT VALID PER 18, 1968, AS REVISED AND SHALL BE PROSECUTED ONLY IN THE PRESENCE OF THE COUNTY ENGINEER. BEFORE WORK CAN BE STARTED, THE CONTRACTOR MUST OBTAIN A PERMIT TO EXCAVATE IN COUNTY STREETS FROM THE L.A. COUNTY ROAD DEPT., DISTRICT OFFICE NO. 1, 120 WEST SECOND STREET, LOS ANGELES, CALIFORNIA. APPROVAL OF THIS PLAN BY THE COUNTY OF LOS ANGELES DOES NOT CONSTITUTE A REPRESENTATION AS TO THE ACCURACY OF THE PROJECT. THE NOTE APPLIES TO ALL PAGES.

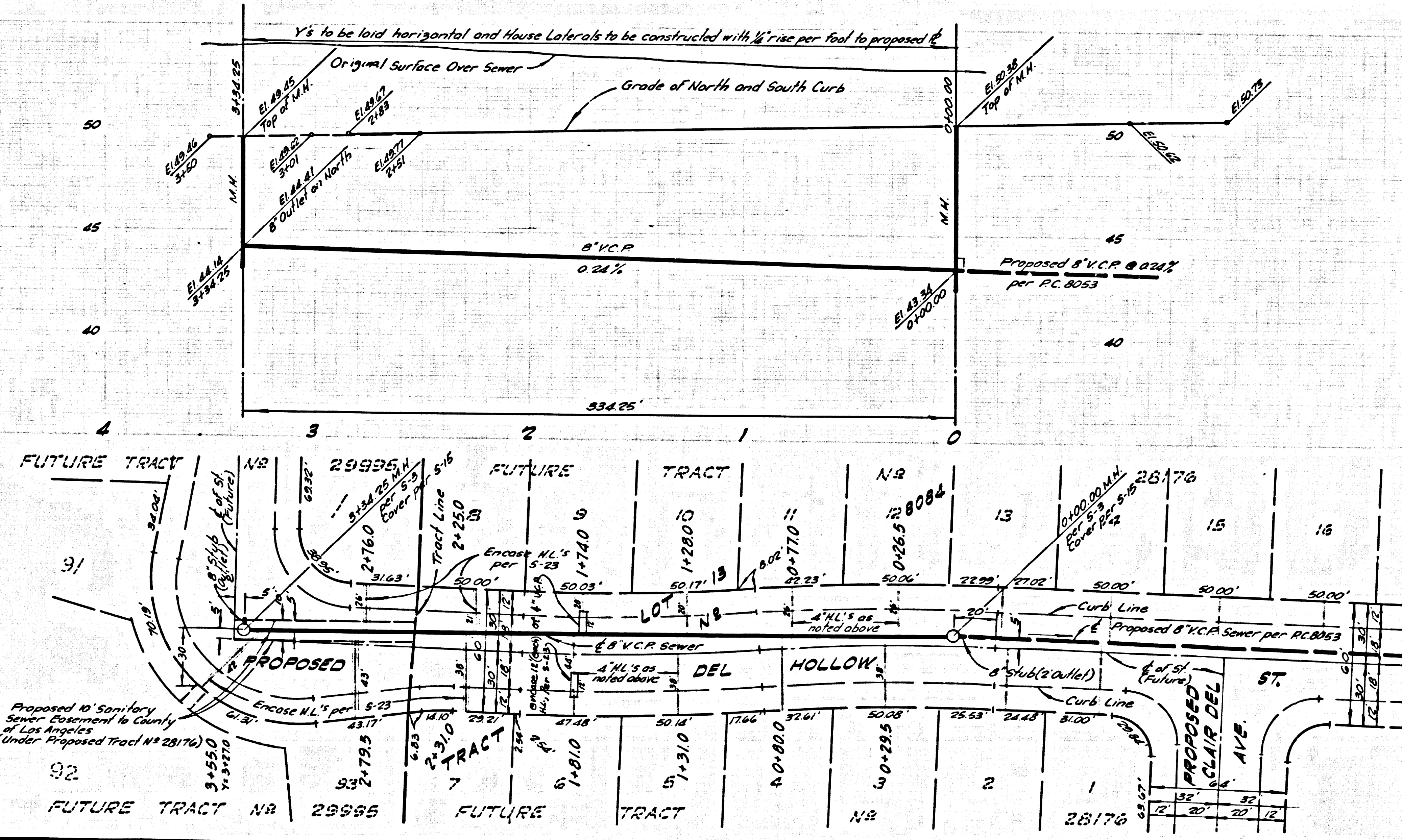
COUNTY OF LOS ANGELES, CALIFORNIA  
 JOHN A. LAMBE, COUNTY ENGINEER J. D. PARKHURST, CHIEF ENGINEER  
 APPROVED BY: [Signature] REGIONAL ENGINEER, DATE 4-5-68 APPROVED BY: [Signature] OFFICE ENGINEER

CHECKED BY: [Signature] W.S. NO. 152931, DATE 4/5/68

J.N. 036206

P.C. 8052 PAGE 2

NO CHARGE FOR CONNECTION



40502

40502