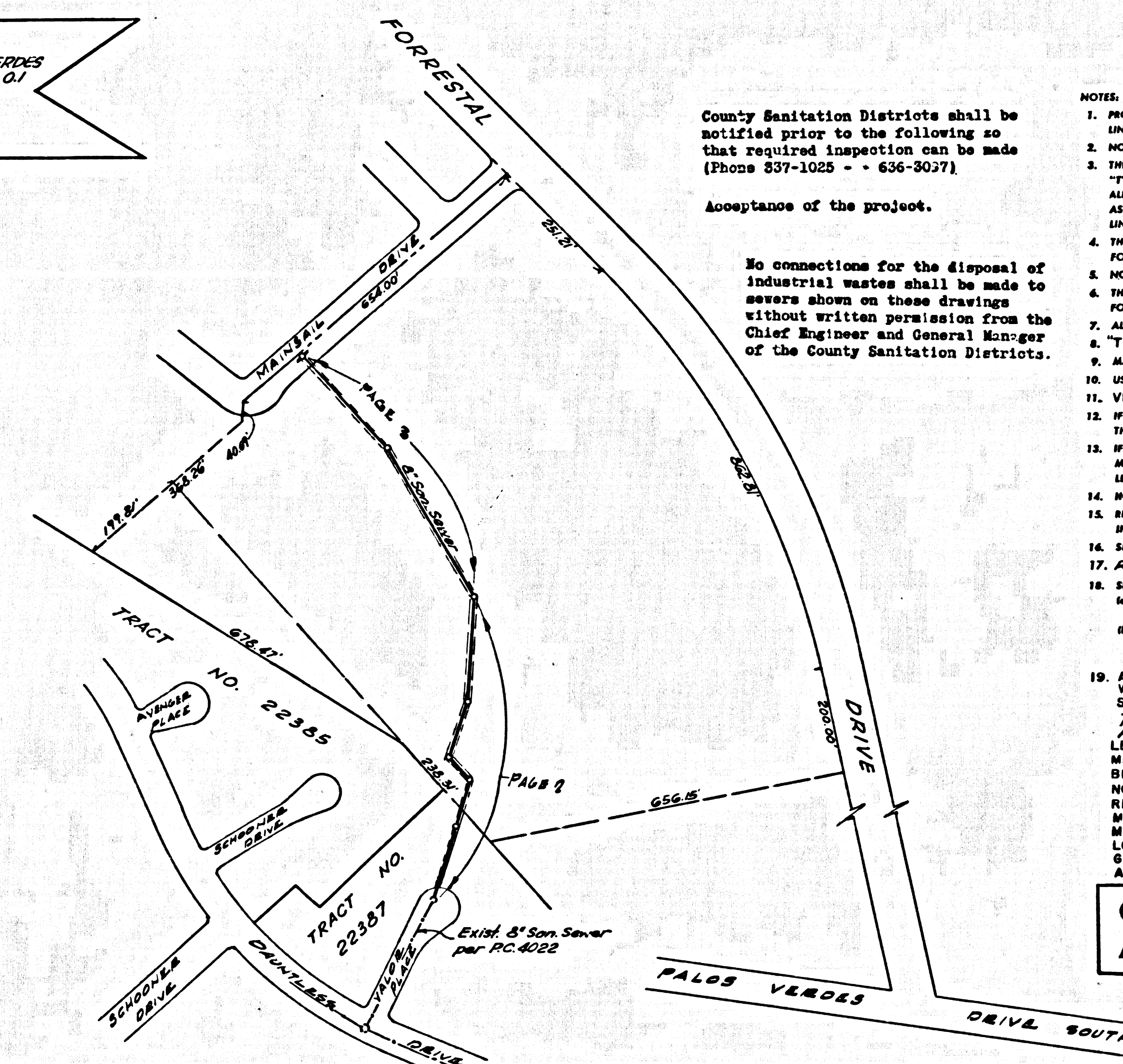


B.M. BY 6066 ELEV. 322.19
 U.S.C. 46.5. DISK IN CONC. POST 26 FT N. E. OF PALOS VERDES DRIVE SOUTH AND 0.5 MI. W. OF PALOS VERDES DRIVE EAST, 0.4 MI. SE. OF FORESTAL DRIVE, 2 FT. E. OF WHITE WITNESS POST MARKED (V-787-1946)
 QUAD. 19

PLAN REVISED 7-2-69
 RAISED SEWER LINE FROM STA. 0+00 TO STA. 0+29.18
 ADDED ONE M.H. AT STA. 0+23.86
 REVISED IN THE OFFICES OF SHUIKMAN, ROGOVAY & ASSOC. 6057 WILSHIRE BLVD., L.A. CALIF. 90036
 REG. C.E. NO. 14751
 REVISION CHECKED BY: Bernard S. Udeloh R.C.E. 10653

PLAN REVISED 11-10-69
 RAISED SEWER LINE FROM STATION 3+92.06 TO 9+28.19, Eliminated 2x 12' x 12' manholes
 REVISED IN THE OFFICES OF SHUIKMAN, ROGOVAY & ASSOC. 6057 WILSHIRE BLVD., L.A. CALIF. 90036
 REG. C.E. NO. 14751
 REVISION CHECKED BY: Bernard S. Udeloh R.C.E. 10653

INDEX MAP
 SCALE: 1"=200'
 P.C. 8055



County Sanitation Districts shall be notified prior to the following so that required inspection can be made (Phone 837-1025 - 636-3037)
 Acceptance of the project.

No connections for the disposal of industrial wastes shall be made to sewers shown on these drawings without written permission from the Chief Engineer and General Manager of the County Sanitation Districts.

DOUBLE SCALE
 LOMITA BLDG. DIST. NO. 12

- NOTES:
1. PROVIDE STAKES ON THE PROPERTY LINE OR PROPERTY LINES PRODUCED AT RIGHT ANGLES TO THE SEWER LINE AT THE CENTER LINE OF EACH MANHOLE.
 2. NO REPRESENTATIVE OF THE COUNTY ENGINEER WILL SURVEY OR LAY OUT ANY PORTION OF THE WORK.
 3. THE PRIVATE ENGINEER SHALL FURNISH THE COUNTY ENGINEER WITH GRADE SHEETS AND STATIONING FOR ALL HOUSE LATERALS AND "T" OR "Y" BRANCHES AND SHALL PROVIDE STAKES FOR THEM AT THEIR PROPER LOCATIONS WITH STATIONING PLAINLY MARKED. ALL HOUSE LATERALS SHALL BE CONSTRUCTED IN A STRAIGHT ALIGNMENT AT RIGHT ANGLES FROM THE MAIN LINE SEWER EXCEPT AS SHOWN ON THE PLANS. HOUSE LATERALS FROM CHIMNEYS SHALL NOT HAVE AN ANGLE OF LESS THAN 45° WITH THE MAIN LINE SEWER. ANY CHANGE IN ALIGNMENT SHALL BE REQUESTED IN WRITING BY THE PRIVATE ENGINEER.
 4. THE PRIVATE ENGINEER SHALL FURNISH THE HOUSE LATERAL DEPTH AT THE PROPERTY LINE BELOW THE TOP OF CURB ELEVATION FOR EACH HOUSE LATERAL ON THE GRADE SHEET.
 5. NO REVISIONS SHALL BE MADE IN THESE PLANS WITHOUT THE APPROVAL OF THE COUNTY ENGINEER.
 6. THE CONTRACTOR SHALL NOTIFY THE CONSTRUCTION DIVISION BY TELEPHONE, MADISON 9-47, EXT. 8151, AT LEAST TWENTY-FOUR HOURS BEFORE STARTING ANY WORK UNDER THIS CONTRACT.
 7. ALL STRUCTURES SHALL BE EITHER BRICK MANHOLES PER S-3 OR PRECAST CONCRETE MANHOLES PER S-4, EXCEPT AS NOTED.
 8. "T" OR "Y" BRANCHES MAY BE USED FOR CONNECTIONS TO MAINLINE SEWERS EXCEPT AS NOTED.
 9. MANHOLE TOPS IN UNIMPROVED RIGHTS-OF-WAY TO BE SIX INCHES ABOVE FINISHED GRADE.
 10. USE EXTRA STRENGTH PIPE, ALL PIPE IS STANDARD DEPTH EXCEPT AS NOTED.
 11. VITRIFIED CLAY PIPE JOINTS SHALL BE TYPE "D", "T", OR "G" PER STD. SPEC. SEC. 208-2.
 12. IF A POWER POLE IS WITHIN THREE FEET OF THE SEWER, THE SEWER SHALL BE ENCASED, PER S-23, TWO FEET ON EACH SIDE FROM THE POINT OF INTERFERENCE.
 13. IF DURING THE COURSE OF CONSTRUCTION IT IS DETERMINED THAT THERE IS LESS THAN FOUR FEET OF COVER OVER THE TOP OF A MAIN LINE OR HOUSE LATERAL V.C.P. SEWER WHICH IS NOT INDICATED ON THE PLANS, THE PIPE SHALL BE ENCASED PER S-23, UNLESS OTHERWISE APPROVED BY THE COUNTY ENGINEER.
 14. HOUSE LATERALS TO BE CONSTRUCTED WITH INVERTS AT PROPERTY LINE & FEET BELOW CURB GRADE EXCEPT AS NOTED.
 15. RESURFACE ALL TRENCHES WITHIN PAVED AREAS TO MEET L.A. COUNTY ROAD DEPT. OR CALIFORNIA STATE HIGHWAY REQUIREMENTS IN ACCORDANCE WITH PERMITS.
 16. SEWERS TO BE TESTED FOR LEAKAGE PER SECTION 206.2.27 STANDARD SPECIFICATIONS.
 17. REFER TO SECTION 7-10.4.1 OF THE STANDARD SPECIFICATIONS REGARDING SAFETY CONES.
 18. SPECIAL BACKFILL IN DESIGNATED AREAS:
 (a) BACKFILL TRENCH AND REPLACE OTHER EARTH REMOVED SO AS TO ACHIEVE THE NATURAL OR FINISHED GRADES AND SLOPES SHOWN ON THE GRADING PLAN APPROVED FOR THIS TRACT BY THE BUILDING AND SAFETY DIVISION.
 (b) ALL BACKFILL AND EARTH REPLACED SHALL BE COMPACTED TO A MINIMUM OF 90% OF MAXIMUM DENSITY PER A.S.T.M. STANDARD METHOD OF TEST D-1557 AS MODIFIED. ACCEPTABLE CERTIFICATION OF SUCH COMPACTION SHALL BE SUBMITTED TO THE CONSTRUCTION DIVISION.
 19. ALL JOINTS BETWEEN CAST IRON PIPE AND VITRIFIED CLAY PIPE SHALL BE MADE WITH A RUBBER SLEEVE JOINT, TYPE "C" OR "D", (WITH BUSHING IF NECESSARY) PER STANDARD SPECIFICATIONS, SECTION 208-2.
 THE FOLLOWING LATEST REVISED STANDARD PLANS DA FILE IN THE OFFICE OF THE CO. ENG. SHALL APPLY IN THE CONSTRUCTION OF THIS PROJECT:
 LEGEND
 MINIMUM EXCAVATION SAFETY REQUIREMENTS — S-3
 BRICK MANHOLE — S-3
 NON REINFORCED PRECAST CONCRETE MANHOLES — S-4
 REINFORCED PRECAST CONCRETE MANHOLE — S-4
 MANHOLE FRAME AND COVER — S-5
 STEP — S-6
 LOADING FOR SEWER PIPE — S-21
 GRADING AND EASEMENT — S-22
 ANCHOR BLOCK — S-24

COLLECT CHARGES AS INDICATED

NOTE: ISSUE NO HOUSE CONNECTION PERMITS UNTIL SEWER R/W IS RECORDED.

PROFILE ALIGNMENT AND GRADE OF
 SANITARY SEWERS
 TO BE CONSTRUCTED IN
 RIGHT-OF-WAY N/O DAUNTLESS DRIVE

P.C. 8055
 PAGE 1

PRIVATE CONTRACT NO. 8055

W.S. 27
 2 SHEETS; 3 PAGES
 SCALE: VERT. 1"=4' JUNE, 1969
 HORIZ. 1"=40'

PREPARED IN THE OFFICES OF
 SHUIKMAN, ROGOVAY & ASSOC.
 6057 WILSHIRE BLVD., L.A. CALIF. 90036
 REG. C.E. NO. 14751

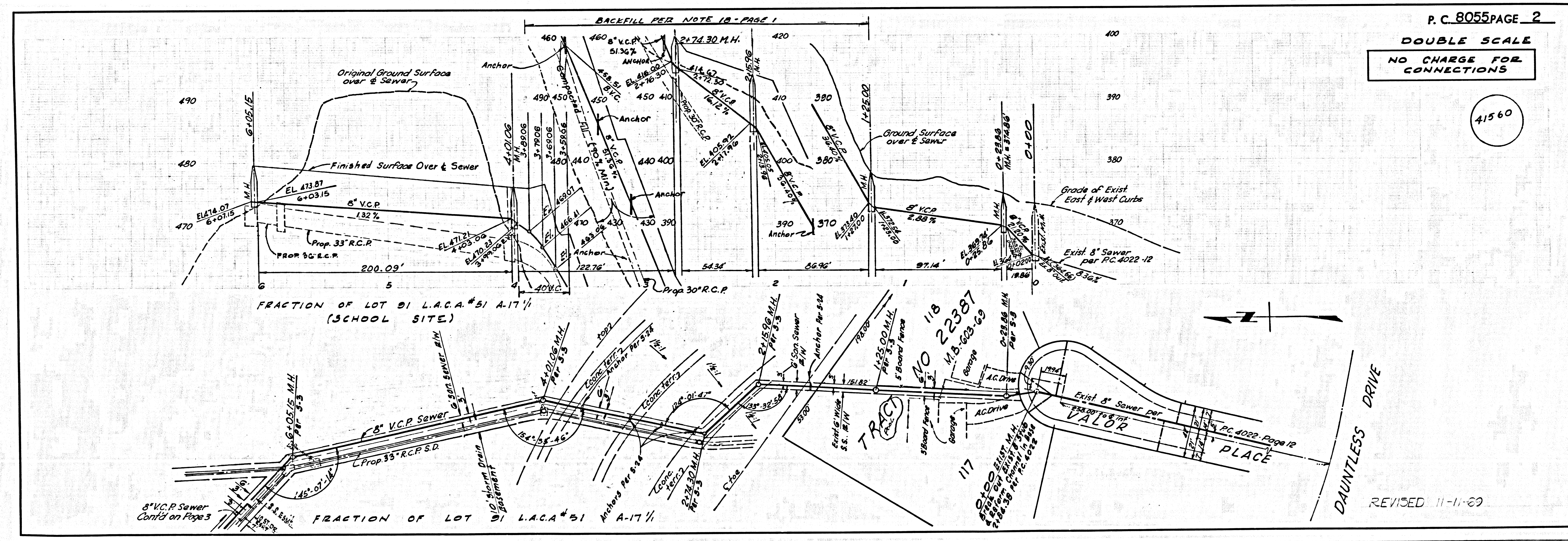
FOR LEGEND SEE PLAN NO. S-1

NOTE:
 GRADES TO WHICH THIS IMPROVEMENT IS TO BE CONSTRUCTED ARE SHOWN ON PLANS AND PROFILES. GRADE POINTS FOR TOP OF CURBS, CENTER LINE OF STREETS, OR CENTER LINE OF ALLEYS ARE SHOWN BY CIRCLES AT ALL POINTS BETWEEN DESIGNATED POINTS THE GRADE SHALL BE ESTABLISHED SO AS TO CONFORM TO A STRAIGHT LINE DRAWN BETWEEN SAID DESIGNATED POINTS. ELEVATIONS ARE IN FEET ABOVE U.S.C. & G.S. SEA LEVEL DATUM OF 1929.
 THE DRAWING AND THE DATA HEREON ARE HEREBY MADE A PART OF THE SPECIFICATIONS.
 WORK SHALL BE CONSTRUCTED ACCORDING TO THE UNIFORM STANDARD SPECIFICATIONS FOR PUBLIC WORKS CONSTRUCTION AND COUNTY ENGINEER SPECIAL PROVISIONS DATED FEB. 2, 1965. AS REVISED, AND SHALL BE PROSECUTED ONLY IN THE PRESENCE OF THE COUNTY ENGINEER.
 BEFORE WORK CAN BE STARTED, THE CONTRACTOR MUST OBTAIN A PERMIT TO EXCAVATE IN COUNTY STREETS FROM THE L.A. COUNTY ROAD DEPT., DISTRICT OFFICE NO. 18 AND PAY A FEE TO THE COUNTY ENGINEER, ROOM 330 COUNTY ENGINEERING BUILDING, 100 WEST SECOND STREET, LOS ANGELES, CALIF. 90012. PERSONAL OFFICE, SUFFICIENT TO COVER THE COST OF CONSTRUCTION INSPECTION AND RECORD PLANS.
 APPROVAL OF THIS PLAN BY THE COUNTY OF LOS ANGELES DOES NOT CONSTITUTE A REPRESENTATION AS TO THE ACCURACY OF THE LOCATION OR OF THE EXISTENCE OR NON-EXISTENCE OF ANY UNDERGROUND UTILITY PIPE, OR STRUCTURE WITHIN THE LIMITS OF THIS PROJECT. THIS NOTE APPLIES TO ALL AGES.
 IF WORK IS TO BE DONE IN A STATE HIGHWAY, A PERMIT MUST BE OBTAINED FROM THE STATE OF CALIFORNIA, DIVISION OF HIGHWAYS, 120 SOUTH SPRING STREET, LOS ANGELES, CALIFORNIA.

COUNTY OF LOS ANGELES, CALIFORNIA
 JOHN A. LAMBE, COUNTY ENGINEER J. D. PARKHURST, CHIEF ENGINEER
 CO. SAN DIST. NO. 12
 APPROVED BY: Robert M. Miller REGIONAL ENGINEER APPROVED BY: J. D. Parkhurst OFFICE ENGINEER

CHECKED BY: Bernard S. Udeloh 6/19/69
 REG. C.E. NO. 10653

41559
 J.N. 0369.C7



P.C. 8055 PAGE 2
 DOUBLE SCALE
 NO CHARGE FOR CONNECTIONS

41560

REVISED 11-11-69

