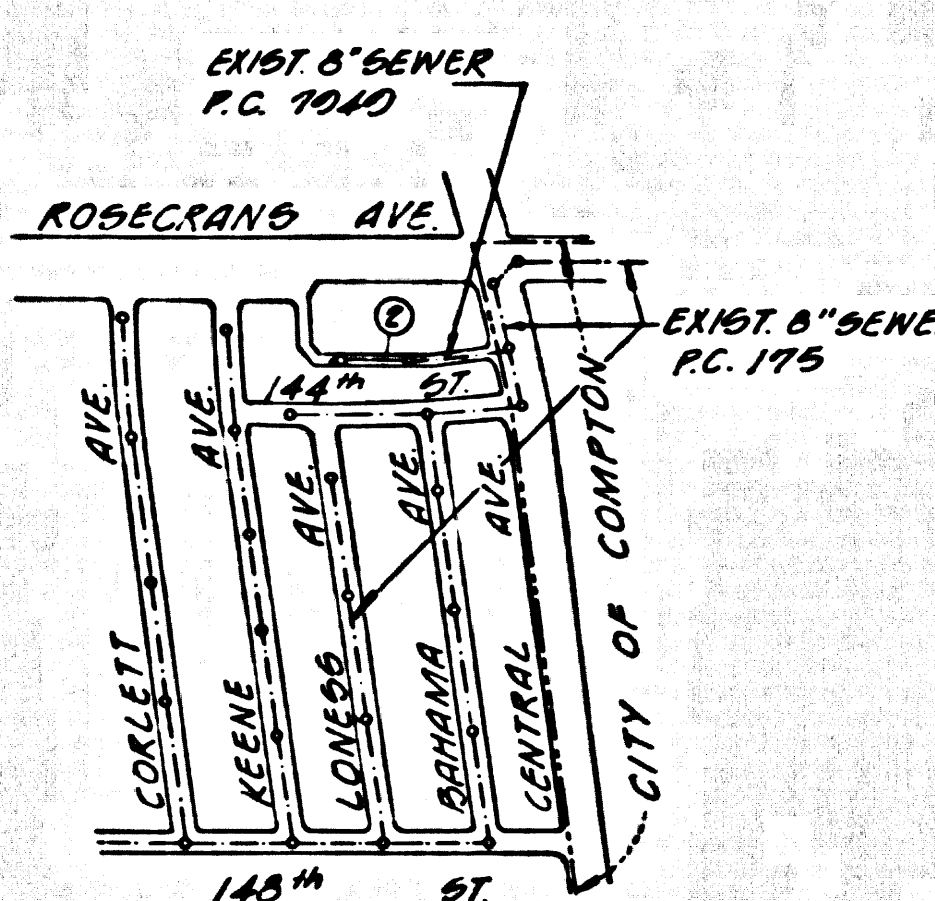


B.M. BY 1080 ELEV. 103.138
 LEAD & BENCH NAIL, N CURB ROSECRANS AVE.
 2 FT. W. OF S.C. 44 FEET N. OF S.
 ROSECRANS AVE., OR FT. N. E. CENTRAL AVE.
 WRITE QUAD. 19 65



INDEX MAP
 P.C. 8063
 FIRST ALLEY SOUTH OF
 ROSECRANS AVENUE
 SCALE: 1"=600'

County Sanitation Districts shall be notified prior to the following so that required inspection can be made (Phone No. 6-3097):
 1) Commencement of construction of manhole on District trunk;
 2) Breaking into existing manhole on District trunk sewer;
 3) Construction of house connections to District trunk sewer;
 4) Acceptance of the project.

LENNOX BLDG. DIST. NO. 7

- PROVIDE STAKES ON THE PROPERTY LINE OR PROPERTY LINES PRODUCED AT RIGHT ANGLES TO THE SEWER LINE AT THE CENTER LINE OF EACH MANHOLE.
- NO REPRESENTATIVE OF THE COUNTY ENGINEER WILL SURVEY OR LAY OUT ANY PORTION OF THE WORK.
- THE PRIVATE ENGINEER SHALL FURNISH THE COUNTY ENGINEER WITH GRADE SHEETS AND STATIONING FOR ALL HOUSE LATERALS AND "T" OR "Y" BRANCHES AND SHALL PROVIDE STAKES FOR THEM AT THEIR PROPER LOCATIONS WITH STATIONING PLAINLY MARKED. ALL HOUSE LATERALS SHALL BE CONSTRUCTED IN A STRAIGHT ALIGNMENT AT RIGHT ANGLES FROM THE MAIN LINE SEWER EXCEPT AS SHOWN ON THE PLANS. HOUSE LATERALS FROM CHIMNEYS SHALL NOT HAVE AN ANGLE OF LESS THAN 45° WITH THE MAIN LINE SEWER. ANY CHANGE IN ALIGNMENT SHALL BE RECORDED IN WRITING BY THE PRIVATE ENGINEER.
- THE PRIVATE ENGINEER SHALL FURNISH THE HOUSE LATERAL DEPTH AT THE PROPERTY LINE BELOW THE TOP OF CURB ELEVATION FOR EACH HOUSE LATERAL ON THE GRADE SHEET.
- NO REVISIONS SHALL BE MADE IN THESE PLANS WITHOUT THE APPROVAL OF THE COUNTY ENGINEER.
- THE CONTRACTOR SHALL NOTIFY THE CONSTRUCTION DIVISION BY TELEPHONE, MADISON 8-4742, EXT. 81551, AT LEAST TWENTY-FOUR HOURS BEFORE STARTING ANY WORK UNDER THIS CONTRACT.
- ALL STRUCTURES SHALL BE EITHER BRICK MANHOLES PER S-3 OR PRECAST CONCRETE MANHOLES PER S-3 OR S-4, EXCEPT AS NOTED.
- USE STANDARD MANHOLE FRAMES AND COVERS S-14, EXCEPT AS NOTED.
- MANHOLE TOPS IN UNIMPROVED RIGHTS-OF-WAY TO BE SIX INCHES ABOVE FINISHED GRADE.
- USE EXTRA STRENGTH PIPE. ALL PIPE IS STANDARD DEPTH.
- UNGLAZED CLAY PIPE JOINTS SHALL BE TYPE "D" "T" OR "B" PER SFD. SPEC. SEC. 208-2.
- IF A POWER POLE IS WITHIN THREE FEET OF THE SEWER, THE SEWER SHALL BE ENCASED, PER S-25, TWO FEET ON EACH SIDE FROM THE POINT OF INTERFERENCE.
- IF DURING THE COURSE OF CONSTRUCTION IT IS DETERMINED THAT THERE IS LESS THAN FOUR FEET OF COVER OVER THE TOP OF A MAIN LINE OR HOUSE LATERAL V.C.P. SEWER WHICH IS NOT INDICATED ON THE PLANS, THE PIPE SHALL BE ENCASED PER S-25, UNLESS OTHERWISE APPROVED BY THE COUNTY ENGINEER.
- HOUSE LATERALS TO BE CONSTRUCTED AT 1/4" RISE PER FOOT TO PROPERTY LINE.
- RESURFACE ALL TRENCHES WITHIN PAVED AREAS TO MEET L.A. COUNTY ROAD DEPT. OR CALIFORNIA STATE HIGHWAY REQUIREMENTS IN ACCORDANCE WITH PERMITS.
- SEWERS TO BE TESTED FOR LEAKAGE PER SECTION 306-2.3.7 UNIFORM STANDARD SPECIFICATIONS.
- ALL STATE AND LOCAL TRENCH SAFETY ORDERS WILL BE STRICTLY ENFORCED.
- "T" OR "Y" BRANCHES MAY BE USED FOR CONNECTIONS TO MAINLINE SEWER, EXCEPT AS NOTED.
- THE FOLLOWING COUNTY ENGINEER STANDARD PLANS APPLY TO THIS PROJECT:
 LEGEND
 MINIMUM ELEVATION SAFETY REQUIREMENTS S-1
 BRICK MANHOLE S-3
 NON REINFORCED PRECAST CONCRETE MANHOLE S-5
 REINFORCED PRECAST CONCRETE MANHOLE S-9
 MANHOLE FRAME AND COVER S-15
 MANHOLE OTLE S-17
 BODDING FOR SEWER PIPING S-21
 CAPPING AND ENCLOSURE S-25
 WYE OR TEE SUPPORT S-26
 ALLOWABLE TRENCH WIDTHING S-33

PROFILE ALIGNMENT AND GRADE OF P.C. 8063
 SANITARY SEWERS PAGE 1
 TO BE CONSTRUCTED IN
 FIRST ALLEY SOUTH OF
 ROSECRANS AVENUE
 PRIVATE CONTRACT NO. 8063

W.S. 26
 1 SHEETS; 2 PAGES
 SCALE: VERT. 1"=6' APRIL 1968
 HORIZ. 1"=40'
 PREPARED IN THE OFFICES OF
 R. G. ANGLIRE, CIVIL ENGINEER
 1046 BEVERLY BLVD.
 LOS ANGELES, CALIF.
 BY: R. G. ANGLIRE
 REG. C. E. NO. 2284

40493

NOTE:
 GRADES TO WHICH THIS IMPROVEMENT IS TO BE CONSTRUCTED ARE SHOWN ON PLANS AND PROFILES. GRADE POINTS FOR TOP OF CURBS, CENTER LINE OF STREETS, OR CENTER LINE OF ALLEYS ARE SHOWN BY CIRCLES ON PROFILES. AT ALL POINTS BETWEEN DESIGNATED POINTS THE GRADE SHALL BE ESTABLISHED SO AS TO CONFORM TO A STRAIGHT LINE DRAWN BETWEEN SAID DESIGNATED POINTS. ELEVATIONS ARE IN FEET ABOVE U.S.C. & G.S. SEA LEVEL DATUM OF 1929.
 THIS DRAWING AND THE DATA HEREON ARE HEREBY MADE A PART OF THE SPECIFICATIONS.
 WORK SHALL BE CONSTRUCTED ACCORDING TO THE UNIFORM STANDARD SPECIFICATIONS FOR PUBLIC WORKS CONSTRUCTION AND COUNTY ENGINEER SPECIAL PROVISIONS DATED FEBRUARY 23, 1956 - AS REVISED, AND SHALL BE PROSECUTED ONLY IN THE PRESENCE OF THE COUNTY ENGINEER.
 BEFORE WORK CAN BE STARTED, THE CONTRACTOR MUST OBTAIN A PERMIT TO EXCAVATE IN COUNTY STREETS FROM THE L.A. COUNTY ROAD DEPT., DISTRICT OFFICE NO. 10, AND PAY A FEE TO THE COUNTY ENGINEER, ROOM 300, COUNTY ENGINEERING BUILDING, 150 WEST SECOND STREET, LOS ANGELES, CALIFORNIA. ADEQUATE INSURANCE COVERAGE IS REQUIRED TO COVER THE COST OF CONSTRUCTION INSPECTION AND RECORD PLANS.
 APPROVAL OF THIS PLAN BY THE COUNTY OF LOS ANGELES DOES NOT CONSTITUTE A REPRESENTATION AS TO THE ACCURACY OF THE LOCATION OF OR THE EXISTENCE OR NON-EXISTENCE OF ANY UNDERGROUND UTILITY PIPE, OR STRUCTURE WITHIN THE LIMITS OF THIS PROJECT. THIS NOTE APPLIES TO ALL PAGES.
 IF WORK IS TO BE DONE IN A STATE HIGHWAY, A PERMIT MUST BE OBTAINED FROM THE STATE OF CALIFORNIA, DIVISION OF HIGHWAYS, 120 SOUTH SPRING STREET, LOS ANGELES, CALIFORNIA.

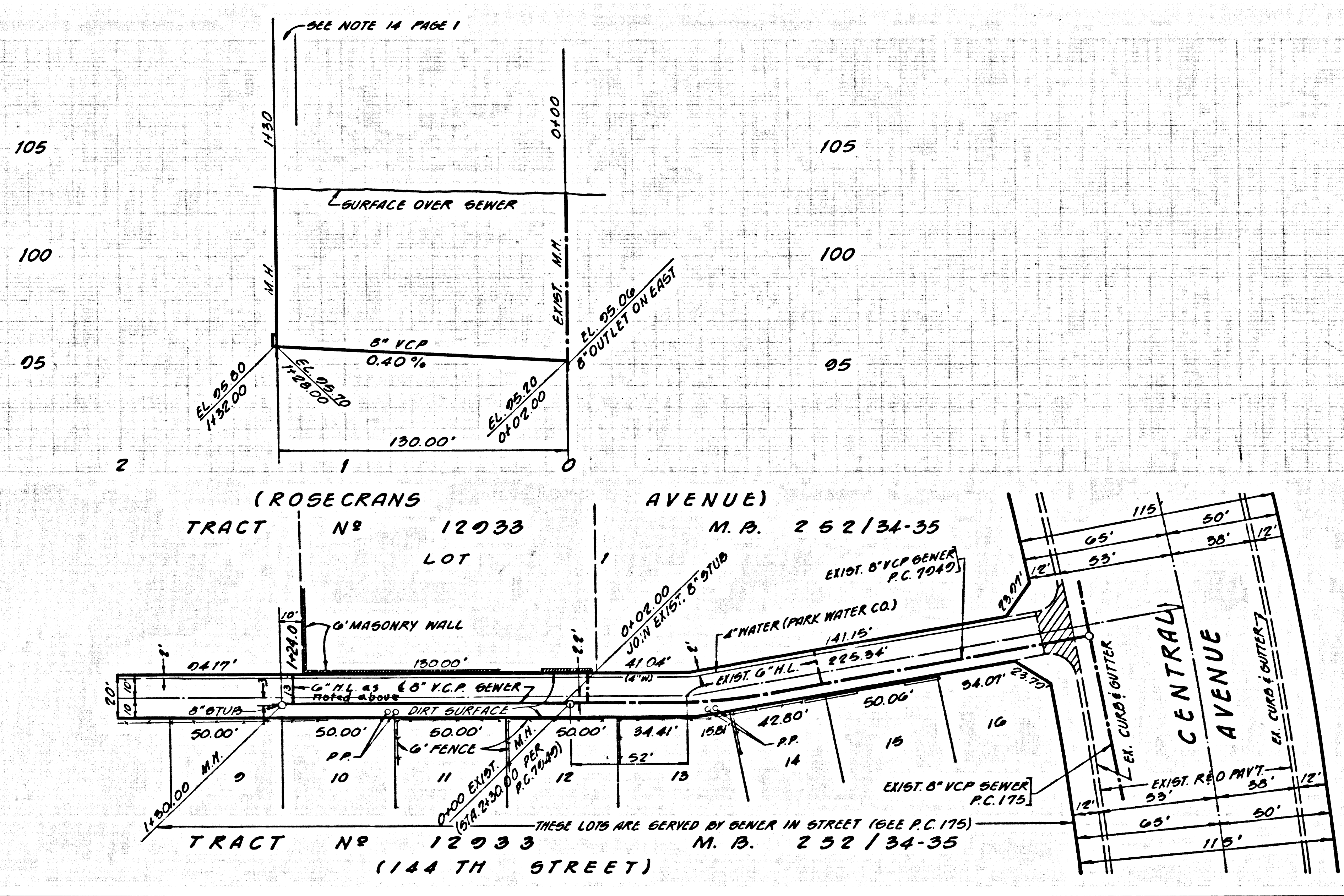
COUNTY OF LOS ANGELES, CALIFORNIA
 JOHN A. LAMBE, COUNTY ENGINEER J. D. PARKHURST, CHIEF ENGINEER
 APPROVED BY: Robert M. Miller, REGIONAL ENGINEER APPROVED BY: J. D. Parkhurst, CHIEF ENGINEER

COLLECT CHARGES AS INDICATED

FOR CONNECTIONS FOR THE DISPOSAL OF INDUSTRIAL WASTES SHALL BE MADE TO SEWERS SHOWN ON THESE DRAWINGS WITHOUT WRITTEN PERMISSION FROM THE CIVIL ENGINEER AND GENERAL MANAGER OF THE COUNTY SANITATION DISTRICTS.

CHECKED BY: [Signature] 5/23/68
 REG. C. E. NO. 10693

J.N. 0360.12



P.C. 8063 PAGE 2

NO CHARGE FOR CORRECTIONS

40494