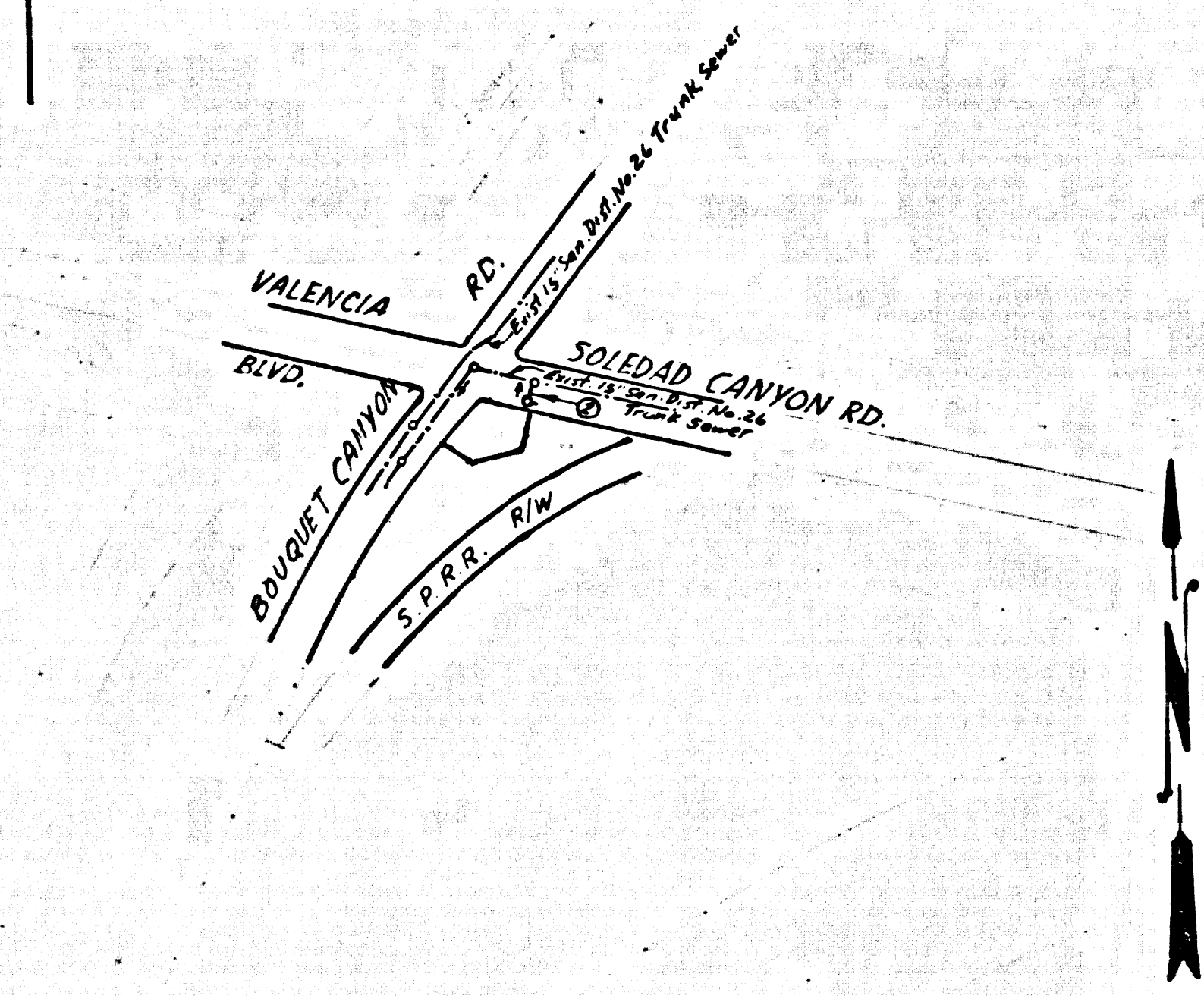


B.M. S.L. 611 ELEV. 1155.290
 U.S.C. F.G.S. br. mon. S. end of conc. headwall of S.F.R.R.
 35 Ft. E. 5/4 Bouquet (n. Rd. 0.4 mi N. of int. San
 Fernando Rd. m.k. (X 899 1955)
 NEWHALL QUAD. 19.58



INDEX MAP
 1" = 500'
 P.C. 8064

UNDERGROUND STRUCTURES
 All underground utilities or structures reported by the owner or others and those shown on the records examined are indicated with their approximate location and extent. The owner by accepting these plans and proceeding with the improvements thereto agrees to assume liability and to hold the undersigned harmless for any damages resulting from the existence of the underground utilities or structures not reported to the undersigned and not indicated on the public records examined located at variance with that reported or shown on records examined.
 The contractor is required to take due precautionary measures to protect the utilities or structures shown and any other utilities or structures found at the site. It shall be the contractor's responsibility to notify the owners of the utilities or structures concerned before starting work.
 Barry S. Fischer
 Barry S. Fischer R.C.E.#13066

County Sanitation Districts shall be notified prior to the following as that required inspection can be made (Phone 40.7-10.85)
 (1) Commencement of construction of manhole on District trunk sewer.
 (2) Breaking into existing manhole on District trunk sewer.
 (3) Coring existing District trunk sewer.
 (4) Construction of house connections to District trunk sewer.
 (5) Acceptance of the project.

NEWHALL BLDG. DIST. NO. 8.2

- NOTES:**
1. PROVIDE STAKES ON THE PROPERTY LINE OR PROPERTY LINES PRODUCED AT RIGHT ANGLES TO THE SEWER LINE AT THE CENTER LINE OF EACH MANHOLE.
 2. NO REPRESENTATIVE OF THE COUNTY ENGINEER WILL SURVEY OR LAY OUT ANY PORTION OF THE WORK.
 3. THE PRIVATE ENGINEER SHALL FURNISH THE COUNTY ENGINEER WITH GRADE SHEETS AND STATIONING FOR ALL HOUSE LATERALS AND "T" OR "Y" BRANCHES AND SHALL PROVIDE STAKES FOR THEM AT THEIR PROPER LOCATIONS WITH STATIONING PLAINLY MARKED. ALL HOUSE LATERALS SHALL BE CONSTRUCTED IN A STRAIGHT ALIGNMENT AT RIGHT ANGLES FROM THE MAIN LINE SEWER EXCEPT AS SHOWN ON THE PLANS.
 4. ANY CHANGE IN ALIGNMENT SHALL BE REQUESTED IN WRITING BY THE PRIVATE ENGINEER.
 5. THE PRIVATE ENGINEER SHALL FURNISH THE HOUSE LATERAL DEPTH AT THE PROPERTY LINE BELOW THE E OF STREET FOR EACH HOUSE LATERAL ON THE GRADE SHEET.
 6. NO REVISIONS SHALL BE MADE IN THESE PLANS WITHOUT THE APPROVAL OF THE COUNTY ENGINEER.
 7. THE CONTRACTOR SHALL NOTIFY THE CONSTRUCTION DIVISION BY TELEPHONE, MADISON 9-070, EXT. 81331, AT LEAST TWENTY-FOUR HOURS BEFORE STARTING ANY WORK UNDER THIS CONTRACT.
 8. ALL STRUCTURES SHALL BE EITHER BRICK MANHOLES PER S-3 OR PRECAST CONCRETE MANHOLES PER S-5 OR S-6, EXCEPT AS NOTED.
 9. "T" or "Y" BRANCHES MAY BE USED FOR CONNECTIONS TO MANHOLE SEWERS EXCEPT AS NOTED.
 10. MANHOLE TOPS IN UNIMPROVED RIGHTS OF WAY TO BE 12 INCHES ABOVE FINISHED GRADE.
 11. USE EXTRA STRENGTH PIPE, ALL PIPE IS STANDARD DEPTH EXCEPT AS NOTED.
 12. Vertical clay pipe joints shall be Type "D", "E", or "G" per Std. Spec. Sec. 200-8.
 13. IF A POWER POLE IS WITHIN THREE FEET OF THE SEWER, THE SEWER SHALL BE ENCASED, PER S-23, TWO FEET ON EACH SIDE FROM THE POINT OF INTERFERENCE.
 14. IF DURING THE COURSE OF CONSTRUCTION IT IS DETERMINED THAT THERE IS LESS THAN FOUR FEET OF COVER OVER THE TOP OF A MAIN LINE OR HOUSE LATERAL V.C.P. SEWER WHICH IS NOT INDICATED ON THE PLANS, THE PIPE SHALL BE ENCASED PER S-23, UNLESS OTHERWISE APPROVED BY THE COUNTY ENGINEER.
 15. HOUSE LATERALS TO BE CONSTRUCTED WITH INVERTS AT PROPERTY LINE 6 FEET BELOW CURB GRADE.
 16. RESURFACE ALL TRENCHES WITHIN PAVED AREAS TO MEET L.A. COUNTY ROAD DEPT. OR CALIFORNIA STATE HIGHWAY REQUIREMENTS IN ACCORDANCE WITH PERMITS.
 17. SEWERS TO BE TESTED FOR LEAKAGE PER SECTION 200-2.17 STANDARD SPECIFICATIONS, REGARDING SANITARY DRAINAGE.
 18. Sewer pipe bedding shall conform to S-21.

THE FOLLOWING COUNTY ENGINEER STD. PLANS APPLY TO THIS PROJECT:

Legend	S-1
Minimum Public Safety Requirements	S-2
Street Manholes	S-3
Non Reinforced Precast Concrete Manhole	S-5
Reinforced Precast Concrete Manhole	S-6
Manhole Frame & Cover	S-7
Manhole Sign	S-11
Bedding for Sewer Pipe	S-21
Credling and Encasement	S-23
Wrap of Tee Support	S-24
Manhole Frame Details	S-25
Special House Laterals	S-25
Special Support and Protection	S-26

NO CONNECTIONS FOR THE DISPOSAL OF INDUSTRIAL WASTES SHALL BE MADE TO SEWERS SHOWN ON THESE DRAWINGS WITHOUT WRITTEN PERMISSION FROM THE CHIEF ENGINEER AND GENERAL MANAGER OF THE COUNTY SANITATION DISTRICTS

PROFILE ALIGNMENT AND GRADE OF
SANITARY SEWERS
 CONSTRUCTED IN

P.C. 8064
 PAGE 1

SOLEDAD CANYON ROAD
 PRIVATE CONTRACT NO. 8064

W.S. 62
 1 SHEETS; 2 PAGES

SCALE: VERT. 1" = 4'
 HORIZ. 1" = 40'

APRIL 1968
 40860

PREPARED IN THE OFFICES OF
FISCHER ENGINEERING CO.
 16218 VENTURA BLVD. ENCINO, CAL.
 783-7681
 Barry S. Fischer
 REG. C. E. NO. 13066

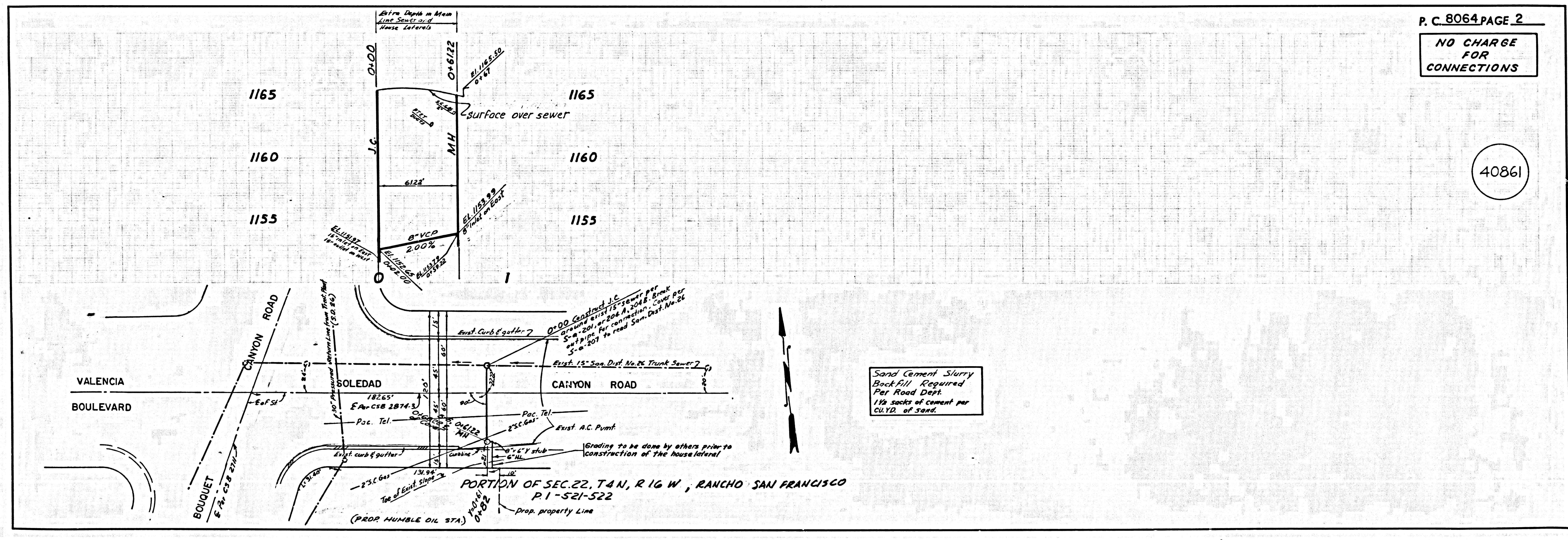
FOR LEGEND SEE PLAN NO. S-1

NOTE:
 GRADES TO WHICH THIS IMPROVEMENT IS TO BE CONSTRUCTED ARE SHOWN ON PLANS AND PROFILES. GRADE POINTS FOR TOP OF CURBS, CENTER LINE OF STREETS, OR CENTER LINE OF ALLEYS ARE SHOWN BY CIRCLES ON PROFILES AT ALL POINTS BETWEEN DESIGNATED POINTS. THE GRADE SHALL BE ESTABLISHED SO AS TO CONFORM TO A STRAIGHT LINE DRAWN BETWEEN SAID DESIGNATED POINTS. ELEVATIONS ARE IN FEET ABOVE U.S.C. & G.S. SEA LEVEL DATUM OF 1929.
 THIS DRAWING AND THE DATA HEREON ARE HEREBY MADE A PART OF THE SPECIFICATIONS.
 WORK SHALL BE CONSTRUCTED ACCORDING TO THE STANDARD SPECIFICATIONS FOR PUBLIC WORKS CONSTRUCTION AND COUNTY ENGINEER SPECIAL PROVISIONS DATED FEB. 16, 1962, AS REVISED, AND SHALL BE PROSECUTED ONLY IN THE PRESENCE OF THE COUNTY ENGINEER.
 BEFORE WORK CAN BE STARTED, THE CONTRACTOR MUST OBTAIN A PERMIT TO EXCAVATE IN COUNTY STREETS FROM THE L.A. COUNTY ROAD DEPT., DISTRICT OFFICE NO. 100 AND PAY A FEE TO THE COUNTY ENGINEER, ROOM 330, COUNTY ENGINEERING BUILDING, 108 WEST SECOND STREET OR ANY REGIONAL OFFICE, SUFFICIENT TO COVER THE COST OF CONSTRUCTION INSPECTION AND SECOND PLANS.
 APPROVAL OF THIS PLAN BY THE COUNTY OF LOS ANGELES DOES NOT CONSTITUTE A REPRESENTATION AS TO THE ACCURACY OF THE LOCATION OF OR THE EXISTENCE OR NON-EXISTENCE OF ANY UNDERGROUND UTILITY PIPE OR STRUCTURE WITHIN THE LIMITS OF THE PROJECT. THIS NOTE APPLIES TO ALL PAGES.
 IF WORK IS TO BE DONE IN A STATE HIGHWAY, A PERMIT MUST BE OBTAINED FROM THE STATE OF CALIFORNIA, DIVISION OF HIGHWAYS, 120 SOUTH SPRING STREET, LOS ANGELES, CALIFORNIA.

COUNTY OF LOS ANGELES, CALIFORNIA
 JOHN A. LAMBIE, COUNTY ENGINEER
 J. D. PARKHURST, CHIEF ENGINEER
 CO. SAN. DIST. 8
 APPROVED BY [Signature] ENGINEER
 APPROVED BY [Signature] OFFICE ENGINEER

CHECKED BY Ralph [Signature] 6/19/68
 REG. C.E. NO. 12726

J. N. 0369.13



P. C. 8064 PAGE 2
 NO CHANGE FOR CONNECTIONS

40861

Sand Cement Slurry Backfill Required For Road Depth 1 1/2 sacks of cement per CU.YD. of sand.