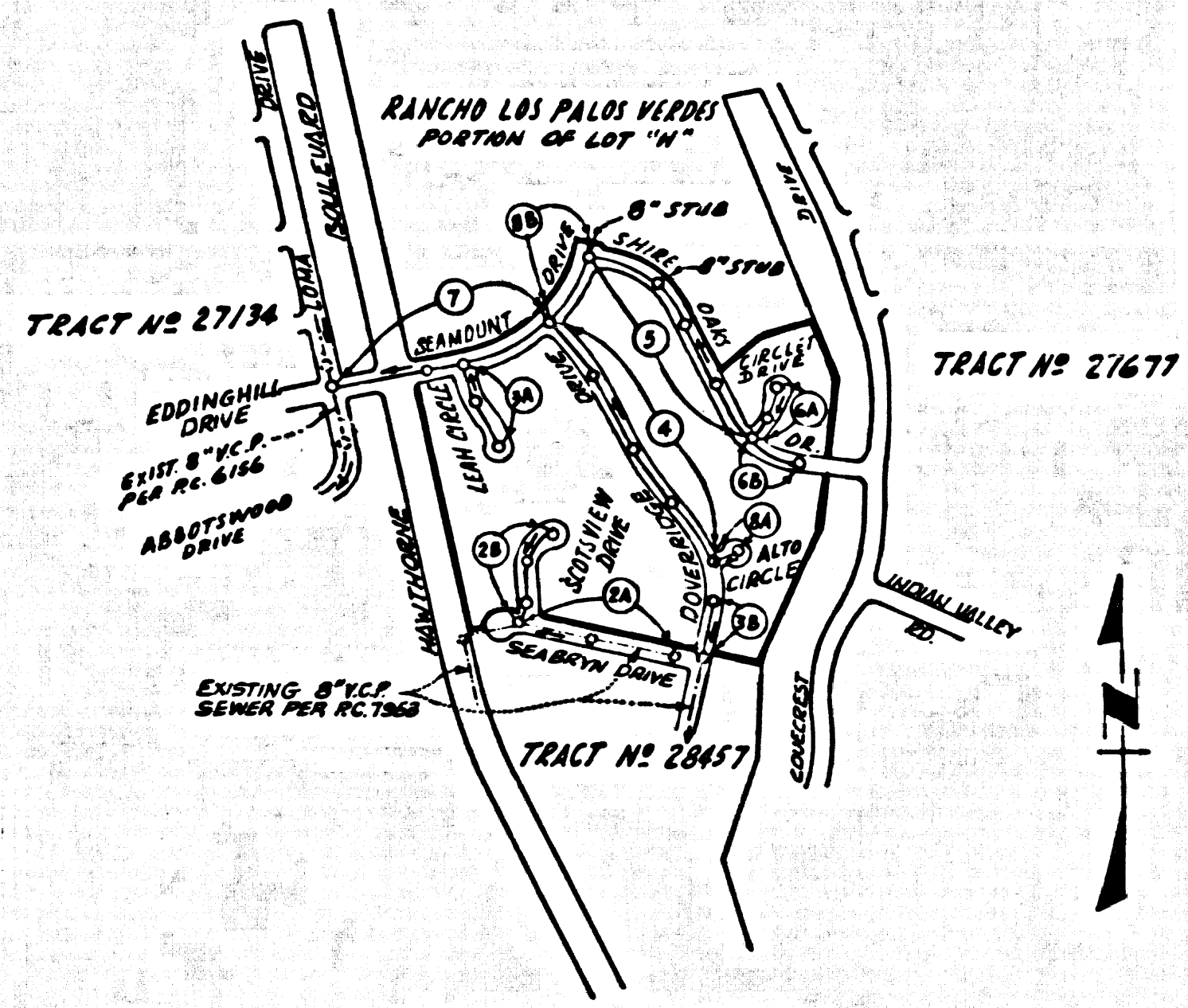


B.M. BY 4384 ELEV. 1009.234
 CHIS SO. E. EDGE CATCH BASIN 8 FT. 2 1/2
 N. EDGE 44 FT. E. CL. HANITON'S BLVD.
 065 M.L. 2 N. CREST ROAD.
 PALOS VERDES QUAD. 1965



INDEX MAP
 TRACT NO. 27936
 P.C. 8066
 SCALE: 1" = 600'

County Sanitation Districts shall be notified prior to the following so that required inspection can be made (Phone No. 630977)

- (X) Commencement of construction of manholes on existing trunk sewer.
- (X) Breaking into existing manholes on District trunk sewer.
- (X) Core drilling District trunk sewer.
- (X) Construction of house connections to District trunk sewer.
- (X) Acceptance of the project.

PRIVATE ENGINEER'S NOTICE TO CONTRACTOR

THE EXISTENCE AND LOCATION OF ANY UNDERGROUND UTILITY PIPES OR STRUCTURES SHOWN ON THESE PLANS ARE OBTAINED BY A SEARCH OF THE AVAILABLE RECORDS. TO THE BEST OF OUR KNOWLEDGE THERE ARE NO EXISTING UTILITIES EXCEPT AS SHOWN ON THIS MAP. THE CONTRACTOR IS REQUIRED TO TAKE PRECAUTIONARY MEASURES TO PROTECT THE UTILITY LINES SHOWN AND ANY OTHER LINES NOT OF RECORD OR NOT SHOWN ON THIS DRAWING.

DATE	REVISIONS
12/18/68	ADDED HOUSE CONNECTIONS AT STATIONS 8+31, 7+76, 9+30 AND 9+72, PAGES 7 AND 8 (C)
12/12/68	ADDED SADDLE AND HOUSE CONNECTIONS AT STATIONS 6+45, 7+15, AND 8+50, PAGES 7 AND 8 (C)
12/12/68	EXTENDED 45' OF 8" V.C.P. FROM STATIONS 0+50 TO STATION 0+95, PAGE 9 (C)
12/12/68	ADDED SADDLE & STAINSA 2+50, PAGE 5
12/12/68	EXTENDED 8" V.C.P. 60' FROM STA. 7+115 TO 10+415, P. 6 (C)

APPROVED BY: *Robert M. Lambie*

NO CONNECTIONS FOR THE DISPOSAL OF INDUSTRIAL WASTES SHALL BE MADE TO SEWERS SHOWN ON THESE DRAWINGS WITHOUT WRITTEN PERMISSION FROM THE CHIEF ENGINEER AND GENERAL MANAGER OF THE COUNTY SANITATION DISTRICTS.

DOUBLE SCALE
 LOMITA BLDG. DIST. NO. 12

- NOTE:
- PROVIDE STAKES ON THE PROPERTY LINE OR PROPERTY LINES PRODUCED AT RIGHT ANGLES TO THE SEWER LINE AT THE CENTER LINE OF EACH MANHOLE.
 - NO REPRESENTATIVE OF THE COUNTY ENGINEER WILL SURVEY OR LAY OUT ANY PORTION OF THE WORK.
 - THE PRIVATE ENGINEER SHALL FURNISH THE COUNTY ENGINEER WITH GRADE SHEETS AND STATIONING FOR ALL HOUSE LATERALS AND 12" OR 14" BRANCHES AND SHALL PROVIDE STAKES FOR THEM AT THEIR PROPER LOCATIONS WITH STATIONINGS PLAINLY MARKED. ALL HOUSE LATERALS SHALL BE CONSTRUCTED IN A STRAIGHT ALIGNMENT AT RIGHT ANGLES FROM THE MAIN LINE SEWER EXCEPT AS SHOWN ON THE PLANS. HOUSE LATERALS FROM CHIMNEYS SHALL NOT HAVE AN ANGLE OF LESS THAN 45° WITH THE MAIN LINE SEWER. ANY CHANGE IN ALIGNMENT SHALL BE REQUESTED IN WRITING BY THE PRIVATE ENGINEER.
 - THE PRIVATE ENGINEER SHALL FURNISH THE HOUSE LATERAL DEPTH AT THE PROPERTY LINE BELOW THE TOP OF CURB ELEVATION FOR EACH HOUSE LATERAL ON THE GRADE SHEET.
 - NO REVISIONS SHALL BE MADE IN THESE PLANS WITHOUT THE APPROVAL OF THE COUNTY ENGINEER.
 - THE CONTRACTOR SHALL NOTIFY THE CONSTRUCTION DIVISION BY TELEPHONE, MADISON 9-4747, EXT. 81531, AT LEAST TWENTY-FOUR HOURS BEFORE STARTING ANY WORK UNDER THIS CONTRACT.
 - ALL STRUCTURES SHALL BE EITHER BRICK MANHOLES PER 3-3 OR PRECAST CONCRETE MANHOLES PER 3-3 OR 3-3 EXCEPT AS NOTED.
 - 7" OR 14" BRANCHES MAY BE BORED FOR CONNECTION TO MAIN LINE SEWER, EXCEPT AS NOTED.
 - MANHOLE TOPS IN UNIMPROVED RIGHTS-OF-WAY TO BE SIX INCHES ABOVE FINISHED GRADE.
 - USE EXTRA STRENGTH PIPE. ALL PIPE IS STANDARD DEPTH EXCEPT AS NOTED.
 - STIFFENED CLAY PIPE JOINTS SHALL BE TYPE "D", "F", OR "G" PER STD. SPEC. REC. 208-2.
 - IF A POWER HOLE IS WITHIN THREE FEET OF THE SEWER, THE SEWER SHALL BE ENCASED, PER 4-2 TWO FEET ON EACH SIDE FROM THE POINT OF INTERFERENCE.
 - IF DURING THE COURSE OF CONSTRUCTION IT IS DETERMINED THAT THERE IS LESS THAN FOUR FEET OF COVER OVER THE TOP OF A MAIN LINE OR HOUSE LATERAL V.C.P. SEWER WHICH IS NOT INDICATED ON THE PLANS, THE PIPE SHALL BE ENCASED PER 3-3, UNLESS OTHERWISE APPROVED BY THE COUNTY ENGINEER.
 - HOUSE LATERALS TO BE CONSTRUCTED WITH INVERTS AT PROPERTY LINE 6 FEET BELOW CURB GRADE EXCEPT AS NOTED.
 - RESURFACE ALL TRENCHES WITHIN PAVED AREAS TO MEET L.A. COUNTY ROAD DEPT. OR CALIFORNIA STATE HIGHWAY REQUIREMENTS IN ACCORDANCE WITH PERMITS.
 - SEWERS TO BE TESTED FOR LEAKAGE PER SECTION 308-E.3.7 PER STANDARD SPECIFICATIONS.
 - ALL JOINTS BETWEEN SEWERS SHALL BE TESTED. THE CONTRACTOR SHALL OBTAIN A PERMIT TO EXCAVATE IN COUNTY STREETS FROM THE L.A. COUNTY ROAD DEPT., DISTRICT OFFICE NO. 3, AND PAY A FEE TO THE COUNTY ENGINEER, ROOM 303, COUNTY ENGINEERING BUILDING, 125 SOUTH SPRING STREET, LOS ANGELES, CALIF. 90057. REGIONAL OFFICE, SUPERVISOR TO COVER THE COST OF CONSTRUCTION INSPECTION AND RECORD PLANS.
 - APPROVAL OF THIS PLAN BY THE COUNTY OF LOS ANGELES DOES NOT CONSTITUTE A REPRESENTATION AS TO THE ACCURACY OF THE LOCATION OF OR THE EXISTENCE OR NON-EXISTENCE OF ANY UNDERGROUND UTILITY PIPE, OR STRUCTURE WITHIN THE LIMITS OF THE PROJECT. THIS NOTE APPLIES TO ALL PAGES.
 - IF WORK IS TO BE DONE IN A STATE HIGHWAY, A PERMIT MUST BE OBTAINED FROM THE STATE OF CALIFORNIA, DIVISION OF HIGHWAYS, 120 SOUTH SPRING STREET, LOS ANGELES, CALIFORNIA.
- FOLLOWING COUNTY ENGINEER STANDARD PLANS APPLY TO THIS PROJECT:
- LEGEND:
- MINIMUM EXCAVATION SAFETY REQUIREMENTS 4-1
 - BRICK MANHOLE 4-3
 - NEW-REINFORCED PRECAST CONCRETE MANHOLE 4-5
 - REINFORCED PRECAST CONCRETE MANHOLE 4-6
 - MANHOLE FRAME AND CHOLE 4-7
 - MANHOLE STEPS 4-8
 - SEWING FOR SEWER WORK 4-9
 - CRADLING AND EXCAVATION 4-11
 - WYE OR TEE SURROUND 4-12
 - ALLOWABLE TRENCH WIDTHS 4-13

PROFILE, ALIGNMENT AND GRADE OF
 SANITARY SEWERS PAGE 1
 TO BE CONSTRUCTED IN

TRACT No 27936
 PRIVATE CONTRACT NO. 8066

W.S. 27
 4 SHEETS, 8 PAGES
 SCALE: HORIZ. 1" = 100' VERT. 1" = 4' APRIL, 1968

PREPARED IN THE OFFICES OF
 ERVIN ENGINEERING
 729 SO. PARK VIEW ST. LOS ANGELES, CALIF. 90057
 REG. C.E. NO. 11932

FOR LEGEND SEE PLAN NO. 3-1

NOTE:
 GRADES TO WHICH THIS IMPROVEMENT IS TO BE CONSTRUCTED ARE SHOWN ON PLANS AND PROFILE. GRADE POINTS FOR TOP OF CURB, CENTER LINE OF STREETS, OR CENTER LINE OF ALLEYS ARE SHOWN BY CIRCLES ON PROFILES. AT ALL POINTS BETWEEN DESIGNATED POINTS THE GRADE SHALL BE ESTABLISHED SO AS TO CONFORM TO A STRAIGHT LINE DRAWN BETWEEN SAID DESIGNATED POINTS. ELEVATIONS ARE IN FEET ABOVE U.S.C. & G.S. SEA LEVEL DATUM OF 1929.
 THIS DRAWING AND THE DATA HEREON ARE HEREBY MADE A PART OF THE SPECIFICATIONS.
 BEFORE WORK CAN BE STARTED, THE CONTRACTOR SHALL OBTAIN A PERMIT TO EXCAVATE IN COUNTY STREETS FROM THE L.A. COUNTY ROAD DEPT., DISTRICT OFFICE NO. 3, AND PAY A FEE TO THE COUNTY ENGINEER, ROOM 303, COUNTY ENGINEERING BUILDING, 125 SOUTH SPRING STREET, LOS ANGELES, CALIF. 90057. REGIONAL OFFICE, SUPERVISOR TO COVER THE COST OF CONSTRUCTION INSPECTION AND RECORD PLANS.
 APPROVAL OF THIS PLAN BY THE COUNTY OF LOS ANGELES DOES NOT CONSTITUTE A REPRESENTATION AS TO THE ACCURACY OF THE LOCATION OF OR THE EXISTENCE OR NON-EXISTENCE OF ANY UNDERGROUND UTILITY PIPE, OR STRUCTURE WITHIN THE LIMITS OF THE PROJECT. THIS NOTE APPLIES TO ALL PAGES.
 IF WORK IS TO BE DONE IN A STATE HIGHWAY, A PERMIT MUST BE OBTAINED FROM THE STATE OF CALIFORNIA, DIVISION OF HIGHWAYS, 120 SOUTH SPRING STREET, LOS ANGELES, CALIFORNIA.

COUNTY OF LOS ANGELES, CALIFORNIA
 JOHN A. LAMBIE, COUNTY ENGINEER
 J. D. PARKHURST, CHIEF ENGINEER
 CO. SAN. DIST. NO. 12
 APPROVED BY: *Robert M. Lambie* REGIONAL ENGINEER
 APPROVED BY: *J. D. Parkhurst* CHIEF ENGINEER

CHECKED BY: *John A. Lambie* 7/1/68
 REG. C.E. NO. 10662

COLLECT CHARGES AS INDICATED

P.C. 8066 PAGE 2

