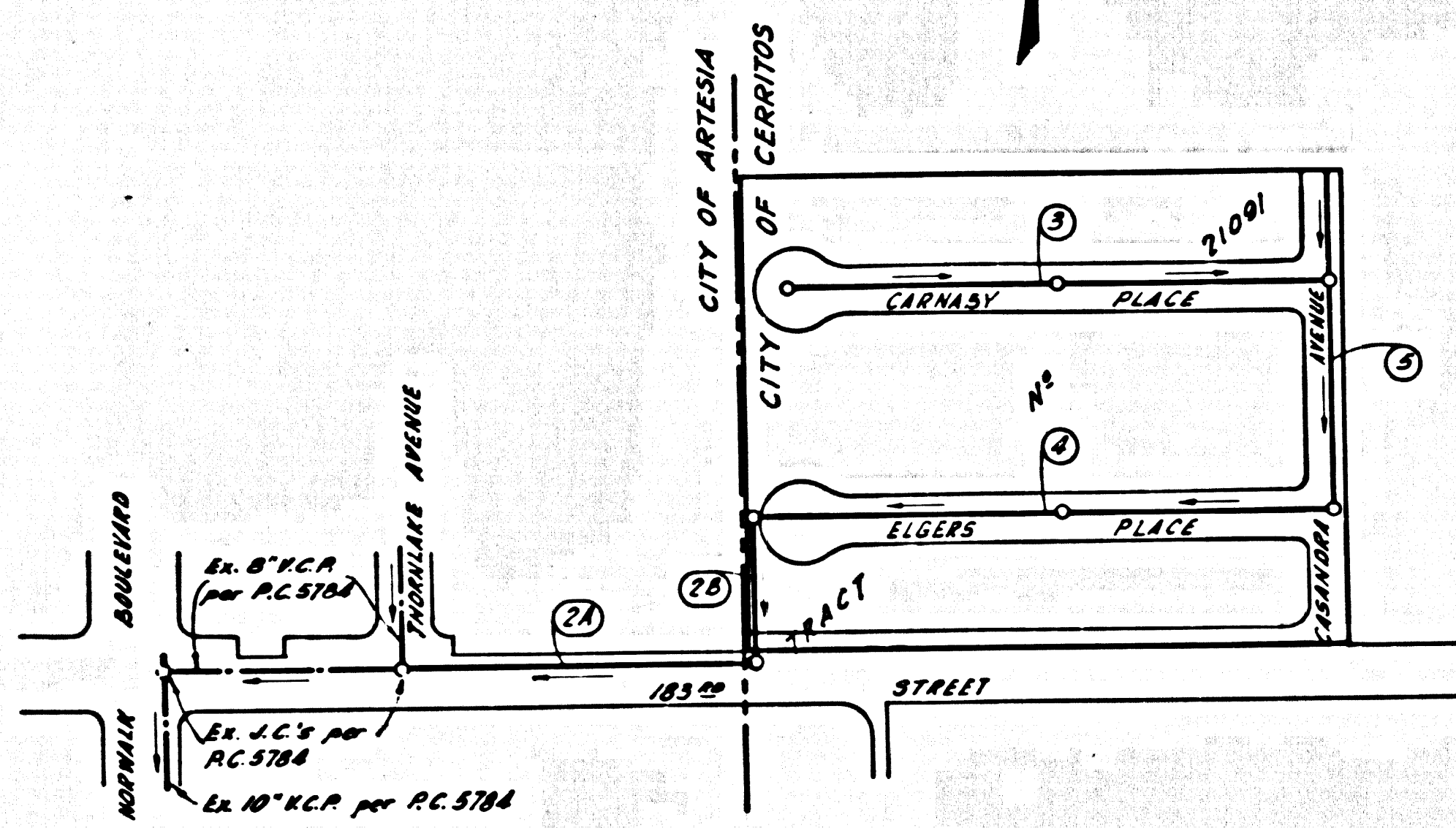


B.M. BY 7043 ELEV. 45.110 H.W.S. 1964.
 48.7 (U.S. 2192) (U.S.C. 6.03. M-51 48-367)
 100.5 N/10 S SOUTH STREET W
 267' 1/2 S & COLUMBIA AVENUE
 P.B. 1208.12
 ARTESIA QUAD. 19 65



KEY MAP
 TRACT NO. 21091

SCALE: 1"=200'

County Sanitation Districts shall be notified prior to the following so that required inspection can be made (Phone)

- (1) Commencement of construction of manhole on District trunk sewer.
- (2) Breaking into existing manhole on District trunk sewer.
- (3) Core drilling District trunk sewer.
- (4) Construction of house connections to District trunk sewer.
- (5) Acceptance of the project.

NOTE: Engineer has attempted to show all pertinent underground utilities or structures, however, it is the Contractor's sole responsibility to locate and protect all utilities or structures whether shown or not.

CITY OF ARTESIA, CALIFORNIA
 PAGE 2A

APPROVED BY: *Pat S. Smith* 5/15/68

CHECKED BY: *Orville P. McCollon* 6/3/68
 R.C.E. 15731

THE CITY OF CERRITOS SHALL FURNISH THE CITY OF ARTESIA THE "AS BUILT" DATA FOR PAGE 2A.

PROFILE ALIGNMENT AND GRADE OF
SANITARY SEWERS
 TO BE CONSTRUCTED IN
TRACT 21091

PRIVATE CONTRACT NO. 8070

3 SHEETS, 3 PAGES
 SCALE: VERT. 1"=4' APRIL 3, 1968

PREPARED IN THE OFFICES OF
TOUPS ENGINEERING INCORPORATED
 CONSULTING CIVIL ENGINEERS
 1801 N. COLLEGE AVE., SOUTH ARLING, CALIF. 941-4481
 BY: *Genavive K. Barry*
 REG. E. NO. 14010

FOR LEGEND SEE PLAN NO. S-1

- NOTES:
1. PROVIDE STAKES ON THE PROPERTY LINE OR PROPERTY LINES PRODUCED AT RIGHT ANGLES TO THE SEWER LINE AT THE CENTER LINE OF EACH MANHOLE.
 2. NO REPRESENTATIVE OF THE CITY ENGINEER WILL SURVEY OR LAY OUT ANY PORTION OF THE WORK.
 3. THE PRIVATE ENGINEER SHALL FURNISH THE CITY ENGINEER WITH GRADE SHEETS AND STATIONING FOR ALL HOUSE LATERALS AND Y BRANCHES AND SHALL PROVIDE STAKES FOR THEM AT THEIR PROPER LOCATIONS WITH STATIONING PLAINLY MARKED. ALL HOUSE LATERALS SHALL BE CONSTRUCTED IN A STRAIGHT ALIGNMENT AT RIGHT ANGLES FROM THE MAIN LINE SEWER EXCEPT AS SHOWN ON THE PLANS. HOUSE LATERALS FROM CHIMNEYS SHALL NOT HAVE AN ANGLE OF LESS THAN 45° WITH THE MAIN LINE SEWER. ANY CHANGE IN ALIGNMENT SHALL BE REQUESTED IN WRITING BY THE PRIVATE ENGINEER.
 4. THE PRIVATE ENGINEER SHALL FURNISH THE HOUSE LATERAL BENEATH AT THE PROPERTY LINE ABOVE THE TOP OF CURB ELEVATION FOR EACH HOUSE LATERAL ON THE GRADE SHEET.
 5. NO REVISIONS SHALL BE MADE IN THESE PLANS WITHOUT THE APPROVAL OF THE CITY ENGINEER.
 6. THE CONTRACTOR SHALL NOTIFY THE CITY OF CERRITOS BY TELEPHONE, UN 5-8706 AT LEAST TWENTY-FOUR HOURS BEFORE STARTING ANY WORK UNDER THIS CONTRACT. SEE NOTE 1A.
 7. MANHOLES SHALL BE MADE SEWER STRUCTURES OF PRECAST CONCRETE MANHOLES PER CITY OF CERRITOS STANDARDS.
 8. USE STANDARD MANHOLE FRAMES AND COVERS, 6'-6", EXCEPT AS NOTED.
 9. MANHOLE TOPS IN UNIMPROVED RIGHTS-OF-WAY TO BE SIX INCHES ABOVE FINISHED GRADE.
 10. USE EXTRA STRENGTH PIPE ONLY.
 11. USE MECHANICAL COMPRESSION JOISTS FOR ALL V.C.R. JOISTS.
 12. ALL SEWER M.C.'S SHALL NOT BE LOCATED WITHIN THE FOOT OF A WATER M.C. ALL WATER M.C.'S SHALL BE LOCATED WITHIN FIVE FEET OF THE CENTER OF THE LOT.
 13. IF A POWER POLE IS WITHIN THREE FEET OF THE SEWER, THE SEWER SHALL BE ENCASED, TWO FEET ON EITHER SIDE FROM THE POINT OF INTERFERENCE.
 14. DURING THE COURSE OF CONSTRUCTION IT IS DETERMINED THAT THERE IS LESS THAN THREE FEET OF COVER OVER THE TOP OF A MAIN LINE OR HOUSE LATERAL V.C.P. SEWER WHICH IS NOT INDICATED ON THE PLANS, THE PIPE SHALL BE ENCASED PER S-25, UNLESS OTHERWISE APPROVED BY THE CITY ENGINEER.
 15. HOUSE LATERALS TO BE CONSTRUCTED WITH INVERTS AT PROPERTY LINE... FEET BELOW CURB GRADE EXCEPT AS NOTED.
 16. REPAIR ALL TRENCHES WITHIN PAVED AREAS TO MEET CITY OF CERRITOS OR CALIFORNIA STATE HIGHWAY REQUIREMENTS IN ACCORDANCE WITH PERMITS.
 17. FOR ALLOWABLE LEAKAGE TEST USE CITY OF CERRITOS SPECIFICATIONS.
 18. ALL STATE AND LOCAL TRENCH SAFETY ORDERS WILL BE STRICTLY ENFORCED.
 19. ALL SEWER PIPE SHALL BE BROSOLD OR EQUIV. 12" ROCK MATERIAL, 12" MINIMUM 4" 1/2" MINIMUM.
 20. SEWER M.C. LATERALS SHALL BE 6" MIN. DIA.
 21. THE PRIVATE ENGINEER SHALL FURNISH THE CITY ENGINEER OFFICE THE "AS BUILT" SEWER PLANS.
 22. THE CONTRACTOR SHALL NOTIFY THE SANITATION DISTRICTS OF LOS ANGELES COUNTY 48 HOURS PRIOR TO ANY CONSTRUCTION, PERTAINING TO SANITATION DISTRICT TRENCH SEWERS CALL NO. JOURNAL AT 484-4087.
 23. HOUSE LATERALS WITH INVERTS LESS THAN 5' BELOW CURB GRADER ARE LOTS 1 THRU 25.
 24. BEFORE ANY WORK CAN BE STARTED, THE CONTRACTOR MUST OBTAIN A PERMIT TO EXCAVATE IN CITY OF ARTESIA STREETS FROM THE L.A. COUNTY ROAD DEPARTMENT, DISTRICT OFFICE NO. 6.

CONSTRUCTION AND EXCAVATION PERMIT
 FROM CITY OF CERRITOS REQUIRED
 DATE: _____
 NUMBER: _____

NO CONNECTIONS FOR THE DISPOSAL OF INDUSTRIAL WASTES SHALL BE MADE TO SEWERS SHOWN ON THESE DRAWINGS WITHOUT WRITTEN PERMISSION FROM THE CHIEF ENGINEER AND GENERAL MANAGER OF THE COUNTY SANITATION DISTRICTS

APPROVAL OF THIS PLAN BY THE CITY OF CERRITOS DOES NOT CONSTITUTE A REPRESENTATION AS TO THE ACCURACY OF THE LOCATION OR THE EXISTENCE OR NON-EXISTENCE OF ANY UNDERGROUND UTILITY PIPE OR STRUCTURE WITHIN THE LIMITS OF THIS PROJECT. THE NOTE APPLIES TO ALL PAGES.
 IF WORK IS TO BE DONE IN A STATE HIGHWAY, A PERMIT MUST BE OBTAINED FROM THE STATE OF CALIFORNIA, DIVISION OF HIGHWAYS, 120 SOUTH SPRING STREET, LOS ANGELES, CALIFORNIA.

CITY OF CERRITOS, CALIFORNIA
 J. D. PARKHURST, CHIEF ENGINEER

APPROVED BY: *William C. Stoney* CO SAN DIST. NO. 12
 OFFICE ENGINEER

SUBMITTED BY: *Don W. Reed*

CHECKED BY: *Walter Bebe*

SHEET 1 OF 5

