

B.M. BY 7552 ELEV. 894.107
 R.O.S.M. 1/4 N. of B.C.R. at NE.
 cor. Kanan Rd. & Canyon Dr. about
 80' N. & 40' E. of Int. 250 N. of
 Freeway Bridge 21-245
 MALIBU QUAD. 19 65

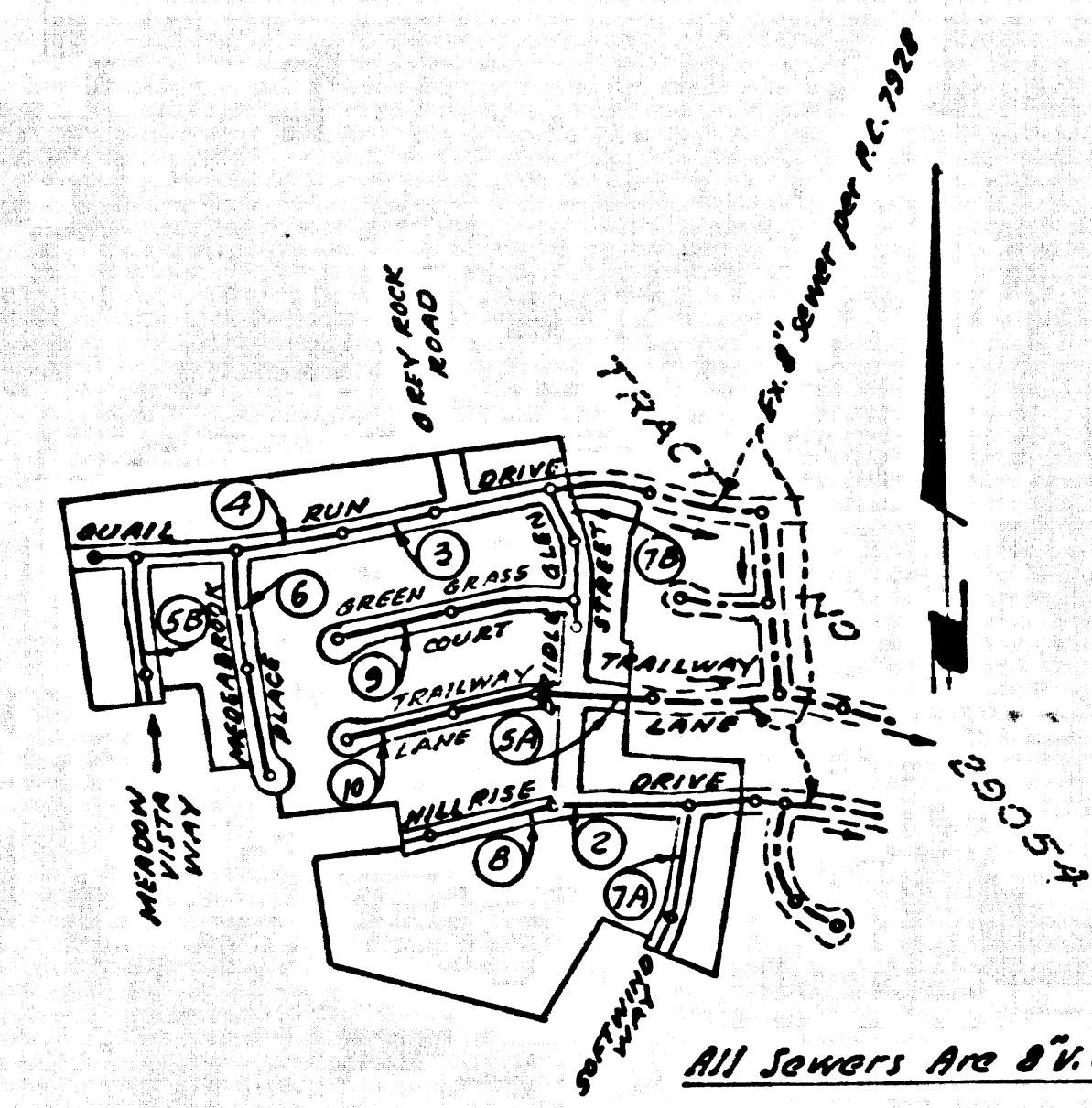
PRIVATE ENGINEER'S NOTICE TO CONTRACTOR:
 The existence and location of any underground utility pipes, or structures shown on these plans are obtained by a search of the available records. To the best of our knowledge there are no existing utilities shown on this map. The contractor is required to take due precautionary measures to protect the utility lines shown and any other lines not of record or not shown on this drawing.
Paul H. Pearson
 Registered Engineer No. 15857

CALABASAS BLDG. DIST. NO. 9.1

PROFILE, ALIGNMENT AND GRADE OF P.C. 8074
 SANITARY SEWERS PAGE 1

TO BE CONSTRUCTED IN
 TRACT No 28412
 PRIVATE CONTRACT NO. 8074

W.S. 90
 5 SHEETS, 10 PAGES
 SCALE: HORIZ. 1" = 40' VERT. 1" = 4'
 April, 1968
 PREPARED BY THE OFFICES OF
 E.L. PEARSON AND ASSOCIATES
Paul H. Pearson 4-10-68
 REG. E. NO. 15857



INDEX MAP
 TRACT No 28412
 P.C. 8074
 Scale: 1" = 600'

- TESTING NOTES
- MANHOLE LEAKAGE TEST:** At the discretion of the district representative one manhole out of every ten manholes and a minimum of two will be filled with water and after three hours will be checked for leakage with no drop in level. For every manhole not passing tests, five more will be tested at the discretion of the district representative.
 - AIR TESTING:** All lines shall be air tested.

The time taken to test one (1) pound per square inch gauge pressure from three (3) pounds per square inch gauge pressure to two (2) pounds per square inch gauge pressure shall not be less than times shown in the following table:

Main Pipe Diameter	Minimum Time Limit
8" - 12"	3 Minutes
15" - 20"	3 Minutes
24" - 30"	3 Minutes
36" - 48"	4 Minutes

If the time is less than listed in the table above, the contractor shall make such repairs as are necessary to eliminate excessive leakage. Air pressure in test section shall not exceed 5 p.s.i. gauge pressure at any time. THE FOLLOWING COUNTY ENGINEER STANDARD PLANS APPLY TO THIS PROJECT

- LEGEND
- MINIMUM EXCAVATION SAFETY REQUIREMENTS S-1
 - BRICK MANHOLE S-2
 - NON-REINFORCED PRECAST CONCRETE MANHOLE S-3
 - MANHOLE FRAME AND COVER S-4
 - BRICK MANHOLE FRAME AND COVER S-5
 - BRICK MANHOLE FRAME AND COVER S-6
 - BRICK MANHOLE FRAME AND COVER S-7
 - BRICK MANHOLE FRAME AND COVER S-8
 - BRICK MANHOLE FRAME AND COVER S-9
 - BRICK MANHOLE FRAME AND COVER S-10
 - BRICK MANHOLE FRAME AND COVER S-11
 - BRICK MANHOLE FRAME AND COVER S-12
 - BRICK MANHOLE FRAME AND COVER S-13
 - BRICK MANHOLE FRAME AND COVER S-14
 - BRICK MANHOLE FRAME AND COVER S-15
 - BRICK MANHOLE FRAME AND COVER S-16
 - BRICK MANHOLE FRAME AND COVER S-17
 - BRICK MANHOLE FRAME AND COVER S-18
 - BRICK MANHOLE FRAME AND COVER S-19
 - BRICK MANHOLE FRAME AND COVER S-20
 - BRICK MANHOLE FRAME AND COVER S-21
 - BRICK MANHOLE FRAME AND COVER S-22
 - BRICK MANHOLE FRAME AND COVER S-23
 - BRICK MANHOLE FRAME AND COVER S-24
 - BRICK MANHOLE FRAME AND COVER S-25
 - BRICK MANHOLE FRAME AND COVER S-26
 - BRICK MANHOLE FRAME AND COVER S-27
 - BRICK MANHOLE FRAME AND COVER S-28
 - BRICK MANHOLE FRAME AND COVER S-29
 - BRICK MANHOLE FRAME AND COVER S-30
 - BRICK MANHOLE FRAME AND COVER S-31
 - BRICK MANHOLE FRAME AND COVER S-32
 - BRICK MANHOLE FRAME AND COVER S-33
 - BRICK MANHOLE FRAME AND COVER S-34
 - BRICK MANHOLE FRAME AND COVER S-35
 - BRICK MANHOLE FRAME AND COVER S-36
 - BRICK MANHOLE FRAME AND COVER S-37
 - BRICK MANHOLE FRAME AND COVER S-38
 - BRICK MANHOLE FRAME AND COVER S-39
 - BRICK MANHOLE FRAME AND COVER S-40
 - BRICK MANHOLE FRAME AND COVER S-41
 - BRICK MANHOLE FRAME AND COVER S-42
 - BRICK MANHOLE FRAME AND COVER S-43
 - BRICK MANHOLE FRAME AND COVER S-44
 - BRICK MANHOLE FRAME AND COVER S-45
 - BRICK MANHOLE FRAME AND COVER S-46
 - BRICK MANHOLE FRAME AND COVER S-47
 - BRICK MANHOLE FRAME AND COVER S-48
 - BRICK MANHOLE FRAME AND COVER S-49
 - BRICK MANHOLE FRAME AND COVER S-50
 - BRICK MANHOLE FRAME AND COVER S-51
 - BRICK MANHOLE FRAME AND COVER S-52
 - BRICK MANHOLE FRAME AND COVER S-53
 - BRICK MANHOLE FRAME AND COVER S-54
 - BRICK MANHOLE FRAME AND COVER S-55
 - BRICK MANHOLE FRAME AND COVER S-56
 - BRICK MANHOLE FRAME AND COVER S-57
 - BRICK MANHOLE FRAME AND COVER S-58
 - BRICK MANHOLE FRAME AND COVER S-59
 - BRICK MANHOLE FRAME AND COVER S-60
 - BRICK MANHOLE FRAME AND COVER S-61
 - BRICK MANHOLE FRAME AND COVER S-62
 - BRICK MANHOLE FRAME AND COVER S-63
 - BRICK MANHOLE FRAME AND COVER S-64
 - BRICK MANHOLE FRAME AND COVER S-65
 - BRICK MANHOLE FRAME AND COVER S-66
 - BRICK MANHOLE FRAME AND COVER S-67
 - BRICK MANHOLE FRAME AND COVER S-68
 - BRICK MANHOLE FRAME AND COVER S-69
 - BRICK MANHOLE FRAME AND COVER S-70
 - BRICK MANHOLE FRAME AND COVER S-71
 - BRICK MANHOLE FRAME AND COVER S-72
 - BRICK MANHOLE FRAME AND COVER S-73
 - BRICK MANHOLE FRAME AND COVER S-74
 - BRICK MANHOLE FRAME AND COVER S-75
 - BRICK MANHOLE FRAME AND COVER S-76
 - BRICK MANHOLE FRAME AND COVER S-77
 - BRICK MANHOLE FRAME AND COVER S-78
 - BRICK MANHOLE FRAME AND COVER S-79
 - BRICK MANHOLE FRAME AND COVER S-80
 - BRICK MANHOLE FRAME AND COVER S-81
 - BRICK MANHOLE FRAME AND COVER S-82
 - BRICK MANHOLE FRAME AND COVER S-83
 - BRICK MANHOLE FRAME AND COVER S-84
 - BRICK MANHOLE FRAME AND COVER S-85
 - BRICK MANHOLE FRAME AND COVER S-86
 - BRICK MANHOLE FRAME AND COVER S-87
 - BRICK MANHOLE FRAME AND COVER S-88
 - BRICK MANHOLE FRAME AND COVER S-89
 - BRICK MANHOLE FRAME AND COVER S-90
 - BRICK MANHOLE FRAME AND COVER S-91
 - BRICK MANHOLE FRAME AND COVER S-92
 - BRICK MANHOLE FRAME AND COVER S-93
 - BRICK MANHOLE FRAME AND COVER S-94
 - BRICK MANHOLE FRAME AND COVER S-95
 - BRICK MANHOLE FRAME AND COVER S-96
 - BRICK MANHOLE FRAME AND COVER S-97
 - BRICK MANHOLE FRAME AND COVER S-98
 - BRICK MANHOLE FRAME AND COVER S-99
 - BRICK MANHOLE FRAME AND COVER S-100

- NOTES
- PROVIDE SEWERS ON THE PROPERTY LINE OR PROPERTY LINES PRODUCED AT RIGHT ANGLES TO THE SEWER LINE AT THE CENTER LINE OF EACH MANHOLE.
 - NO REPRESENTATIVE OF THE COUNTY ENGINEER WILL SURVEY OR LAY OUT ANY PORTION OF THE WORK.
 - THE PRIVATE ENGINEER SHALL FURNISH THE COUNTY ENGINEER WITH GRADE SHEETS AND STATIONING FOR ALL HOUSE LATERALS "T" OR "Y" BRANCHES AND SHALL PROVIDE STAKES FOR THEM AT THEIR PROPER LOCATIONS WITH STATIONING PLAINLY MARKED. ALL HOUSE LATERALS SHALL BE CONSTRUCTED IN A STRAIGHT ALIGNMENT AT RIGHT ANGLES FROM THE MAIN LINE SEWER EXCEPT AS SHOWN ON THE PLANS. HOUSE LATERALS FROM CHIMNEYS SHALL NOT HAVE AN ANGLE OF LESS THAN 45° WITH THE MAIN LINE SEWER. ANY CHANGE IN ALIGNMENT SHALL BE RECORDED IN WRITING BY THE PRIVATE ENGINEER.
 - THE PRIVATE ENGINEER SHALL FURNISH THE HOUSE LATERAL DEPTH AT THE PROPERTY LINE BELOW THE TOP OF CURB ELEVATION FOR EACH HOUSE LATERAL ON THE GRADE SHEET.
 - NO REVISIONS SHALL BE MADE IN THESE PLANS WITHOUT THE APPROVAL OF THE COUNTY ENGINEER.
 - THE CONTRACTOR SHALL NOTIFY THE CONSTRUCTION DIVISION BY TELEPHONE, HOURS 8:00 A.M. TO 5:00 P.M., AT LEAST TWENTY-FOUR HOURS BEFORE STARTING ANY WORK UNDER THIS CONTRACT.
 - MANHOLES SHALL BE BUILT PER S-1, S-2 OR S-3 EXCEPT AS NOTED.
 - MANHOLE TOPS IN UNIMPROVED RIGHTS-OF-WAY TO BE SIX INCHES ABOVE FINISHED GRADE.
 - USE STEEL STRENGTH PIPE. ALL PIPE IS STANDARD EXCEPT AS NOTED.
 - WITHELIZED CLAY PIPE MANHOLE SHALL BE TYPE "D", "W" OR "E" PER STD. SPEC. SEC. 208-2.
 - IF A POWER POLE IS WITHIN THREE FEET OF THE SEWER, THE SEWER SHALL BE ENCASED, PER S-23, TWO FEET ON EACH SIDE FROM THE POINT OF INTERFERENCE.
 - IF DURING THE COURSE OF CONSTRUCTION IT IS DETERMINED THAT THERE IS LESS THAN FOUR FEET OF COVER OVER THE TOP OF A MAIN LINE OR HOUSE LATERAL V.C.P. SEWER WHICH IS NOT INDICATED ON THE PLANS, THE PIPE SHALL BE ENCASED PER S-23, UNLESS OTHERWISE APPROVED BY THE COUNTY ENGINEER.
 - HOUSE LATERALS TO BE CONSTRUCTED WITH INVERTS AT PROPERTY LINE 6 FEET BELOW CURB GRADE EXCEPT AS NOTED.
 - RESURFACE ALL TRENCHES WITHIN PAVED AREAS TO MEET L.A. COUNTY ROAD DEPT. OR CALIFORNIA STATE HIGHWAY REQUIREMENTS IN ACCORDANCE WITH PERMITS.
 - SEWERS TO BE TESTED FOR LEAKAGE PER NOTES AT LEFT HEREON.
 - REFER TO SECTION 7-10.4.1 OF THE STANDARD SPECIFICATIONS REGARDING SAFETY ORDERS.
 - "T" BRANCHES MAY BE USED IN PLACE OF "Y" BRANCHES, EXCEPT AS NOTED.

REVISIONS	APPROVED
August 15, 1968 Removed lots 53, 54, 55 & 56 from project and changed lot numbers where applicable	<i>Paul H. Pearson</i> REG. E. NO. 15857

COLLECT CHARGES AS INDICATED

NOTE: GRADES TO WHICH THE IMPROVEMENT IS TO BE CONSTRUCTED ARE SHOWN ON PLANS AND PROPER GRADE POINTS FOR TOP OF CURBS, CENTER LINE OF STREETS, OR CENTER LINE OF ALLEYS ARE SHOWN BY CIRCLES ON PROFILE. AT ALL POINTS BETWEEN DESIGNATED POINTS THE GRADE SHALL BE ESTABLISHED SO AS TO CONFORM TO A STRAIGHT LINE DRAWN BETWEEN SAID DESIGNATED POINTS. ELEVATIONS ARE IN FEET ABOVE U.S.C. & G.S. SEA LEVEL, DATUM OF 1929.

THIS DRAWING AND THE DATA HEREON ARE HEREBY MADE A PART OF THE SPECIFICATIONS FOR PUBLIC UTILITY CONSTRUCTION AND CONSTRUCTION SPECIAL PROVISIONS PART 7-10.4.1 AND SHALL BE OBSERVED AND SHALL BE CONSIDERED AS PART OF THE CONTRACT. BEFORE WORK CAN BE STARTED, THE CONTRACTOR MUST OBTAIN A PERMIT TO EXCAVATE IN COUNTY STREETS FROM THE L.A. COUNTY ROAD DEPT., DISTRICT OFFICE NO. 1, AND PAY TO THE COUNTY ENGINEER, ROOM 300, COUNTY ENGINEERING BUILDING, ONE WEST SECOND STREET, LOS ANGELES, CALIFORNIA, REGIONAL OFFICE, SUFFICIENT TO COVER THE COST OF CONSTRUCTION INSPECTION AND RECORD PLANS.

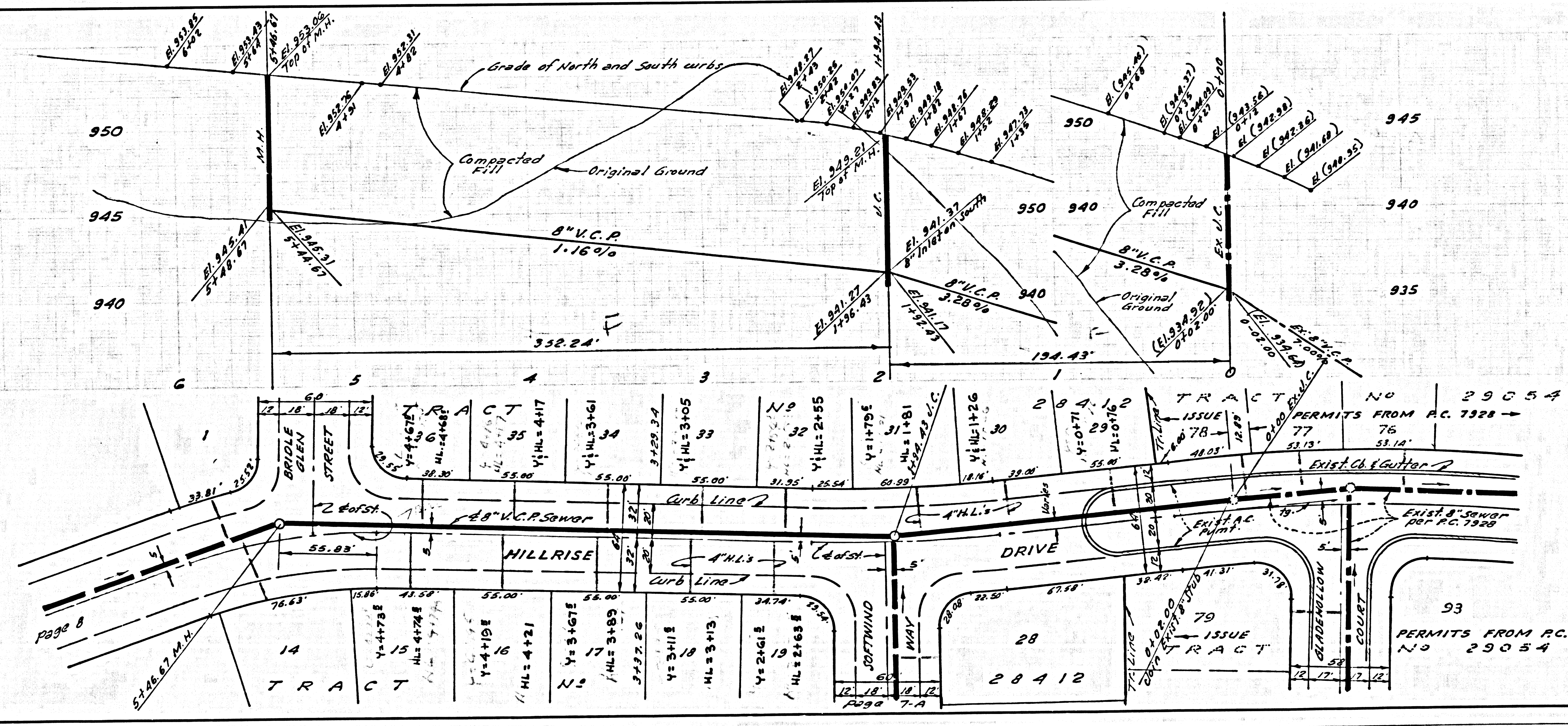
APPROVAL OF THIS PLAN BY THE COUNTY OF LOS ANGELES DOES NOT CONSTITUTE AN REPRESENTATION AS TO THE ACCURACY OF THE LOCATION OF OR THE EXISTENCE OR NON-EXISTENCE OF ANY UNDERGROUND UTILITY PIPE, OR STRUCTURE WITHIN THE LIMITS OF THE PROJECT. THIS NOTE APPLIES TO ALL PAGES.

IF WORK IS TO BE DONE IN A STATE HIGHWAY, A PERMIT MUST BE OBTAINED FROM THE STATE OF CALIFORNIA, DIVISION OF HIGHWAYS, 120 SOUTH SPRING STREET, LOS ANGELES, CALIFORNIA.

COUNTY OF LOS ANGELES, CALIFORNIA
 JOHN A. LAMBE, COUNTY ENGINEER
 APPROVED BY: *Paul H. Pearson* Regional Engineer (2016) APPROVED BY: *Paul H. Pearson* General Manager / Chief Engineer

CHECKED BY: *J.K. Deida* 7-9-68
 REG. E. NO. 3105 (2074)

J.N. 0250.02

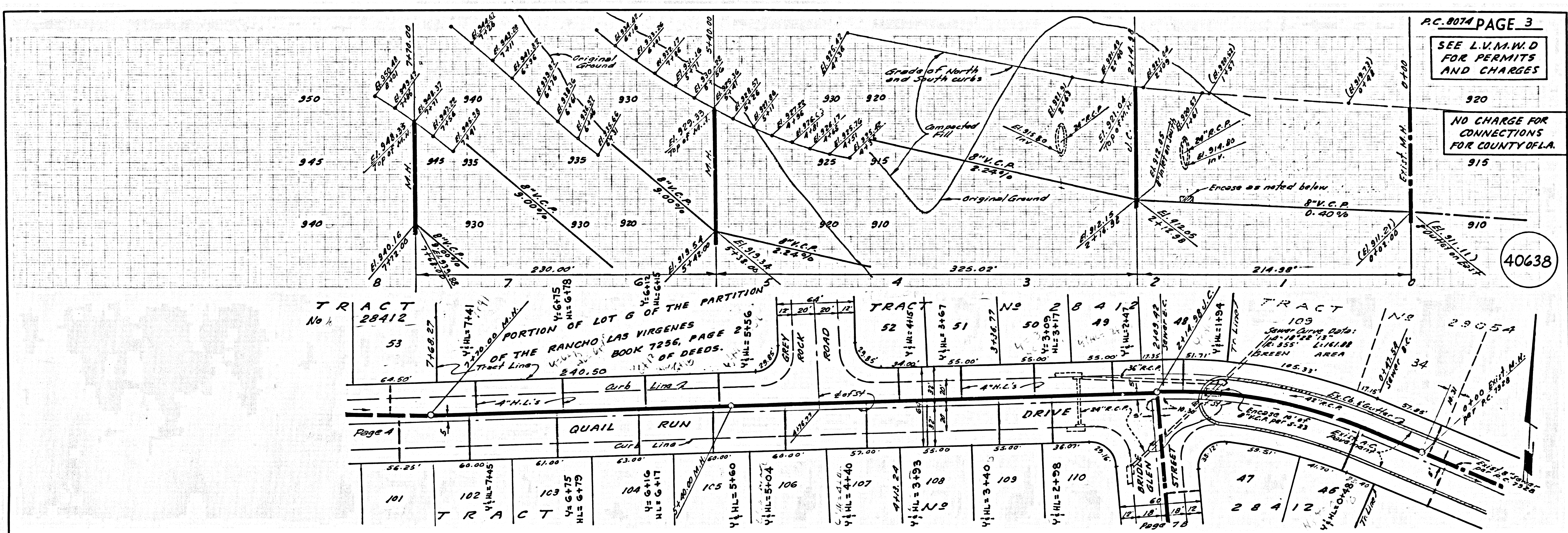


P.C. 8074 PAGE 2

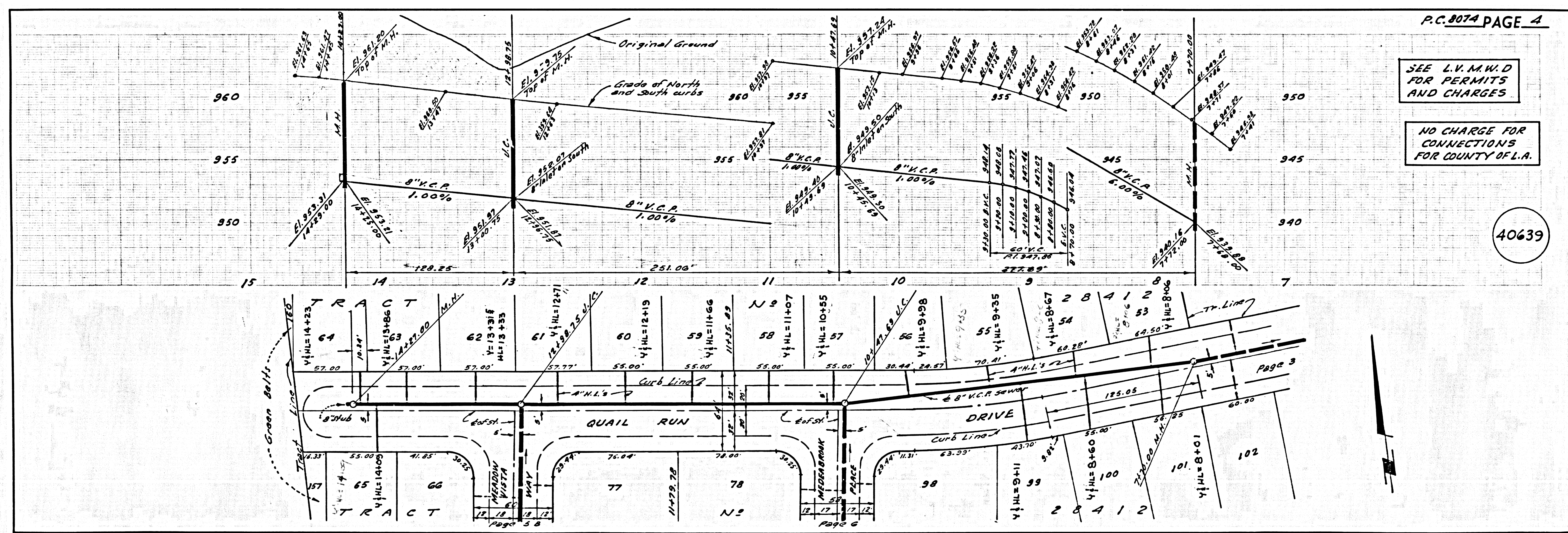
NO CHARGE FOR CONNECTIONS FOR COUNTY OF L.A.

SEE L.V.M.W.D FOR PERMITS AND CHARGES

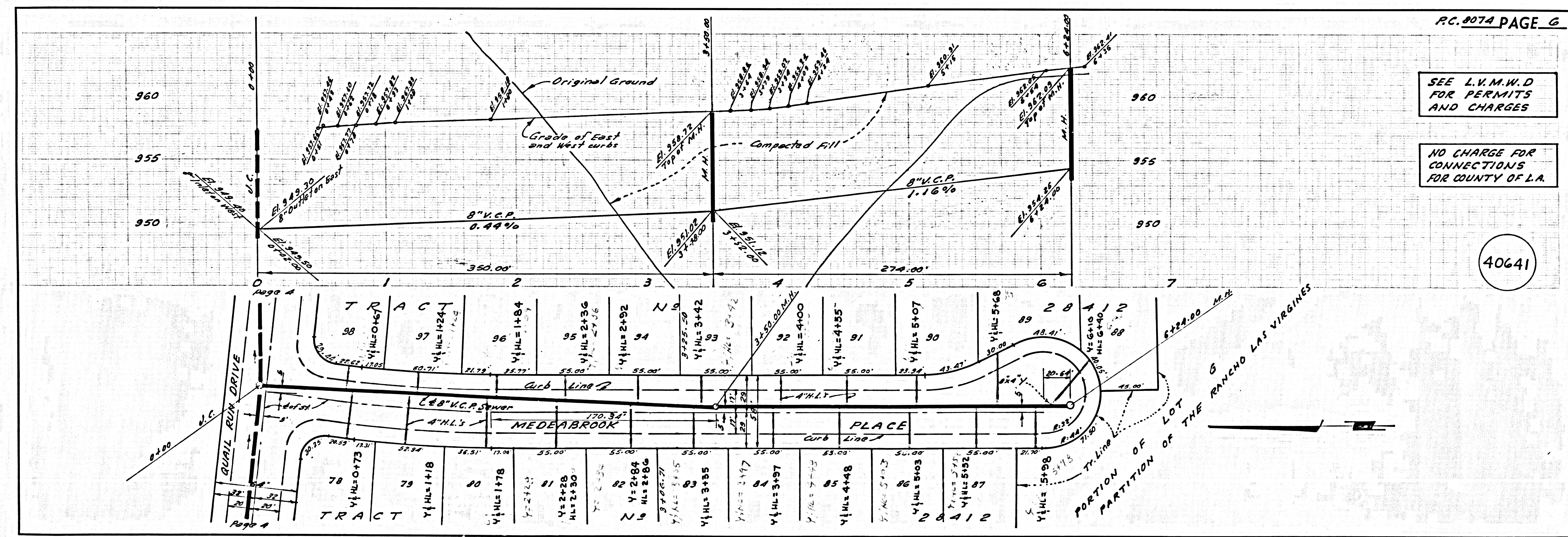
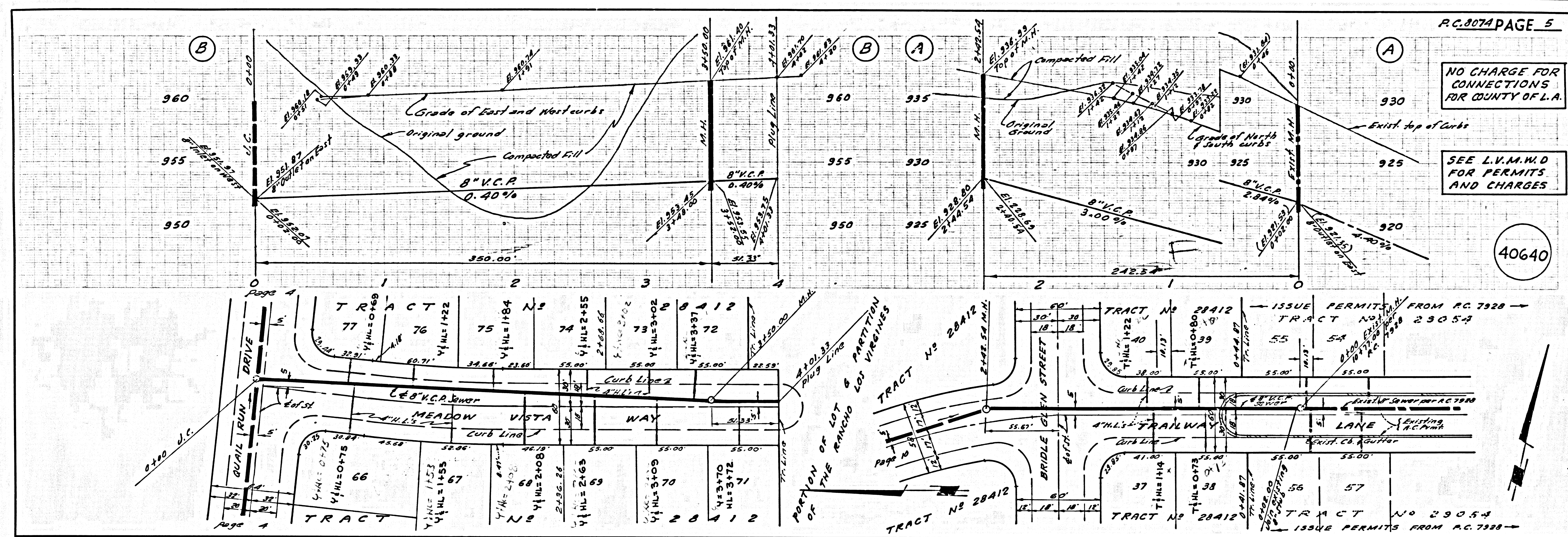
40637

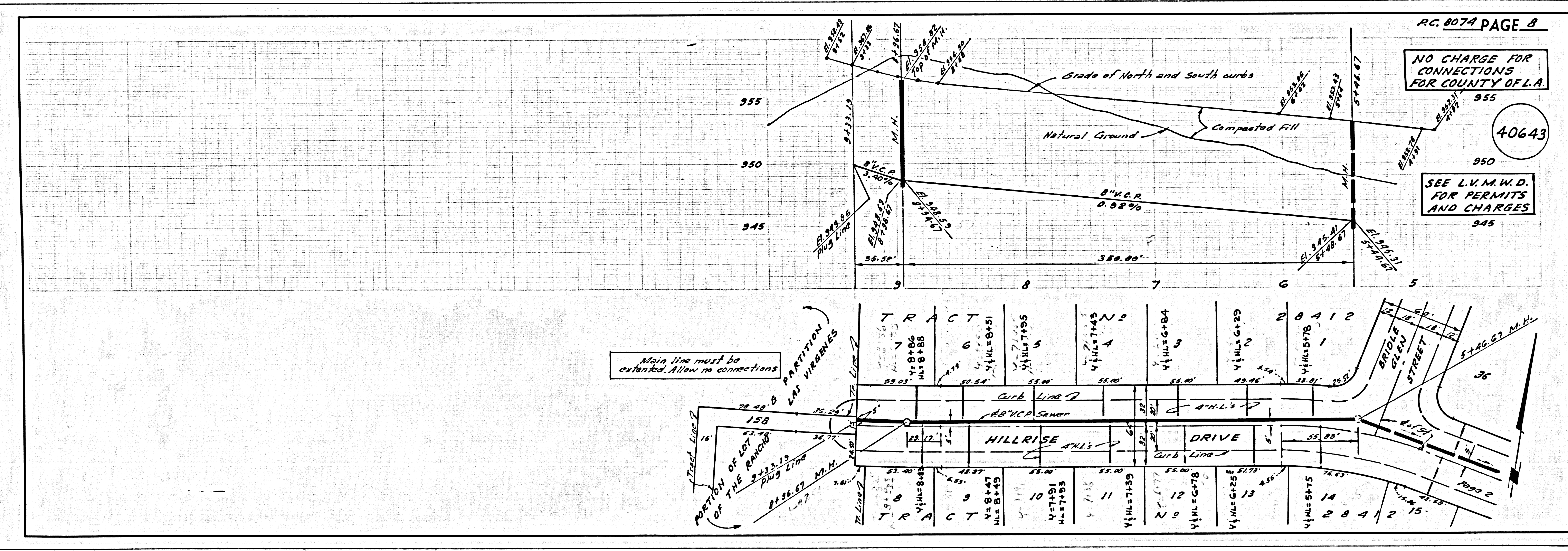
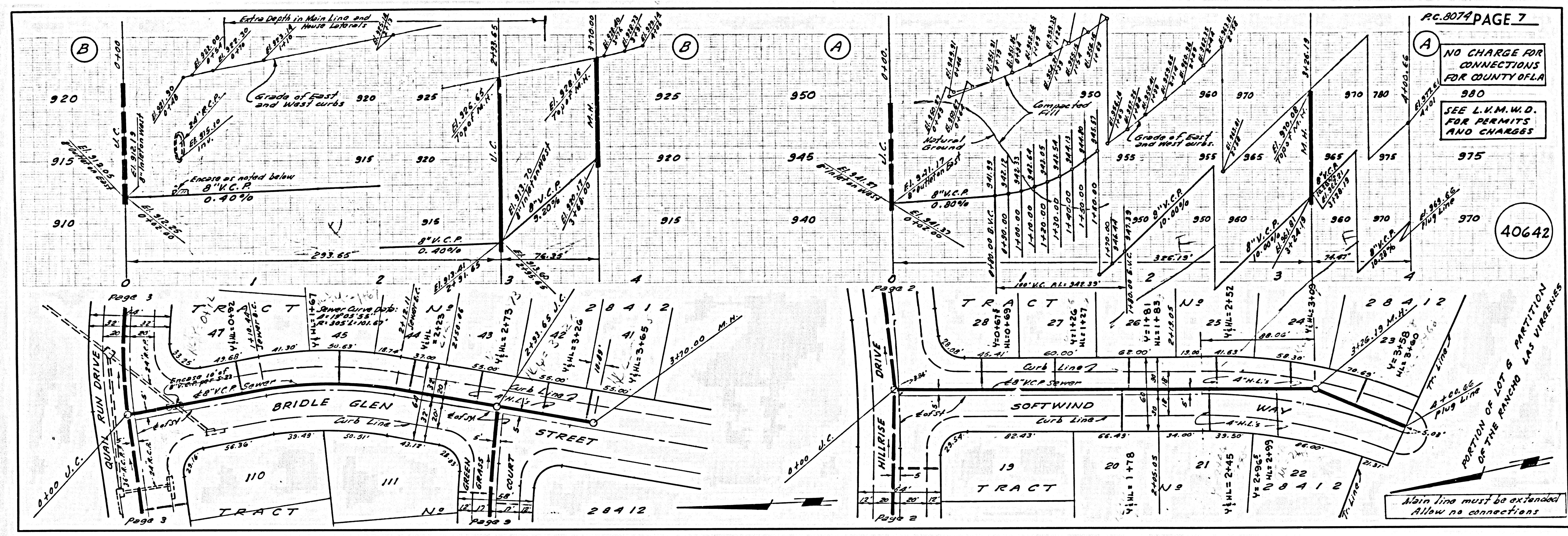


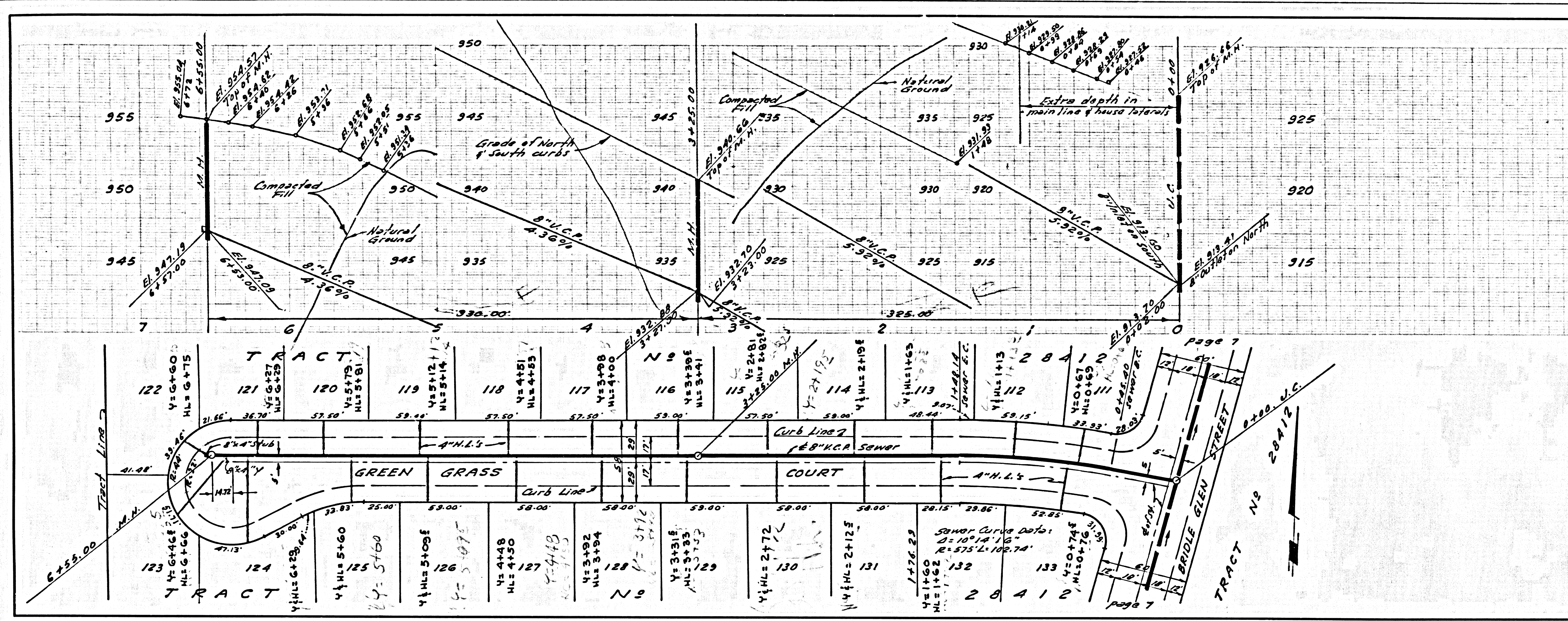
P.C. 8074 PAGE 3
 SEE L.V.M.W.D FOR PERMITS AND CHARGES
 NO CHARGE FOR CONNECTIONS FOR COUNTY OF L.A.
 40638



P.C. 8074 PAGE 4
 SEE L.V.M.W.D FOR PERMITS AND CHARGES
 NO CHARGE FOR CONNECTIONS FOR COUNTY OF L.A.
 40639



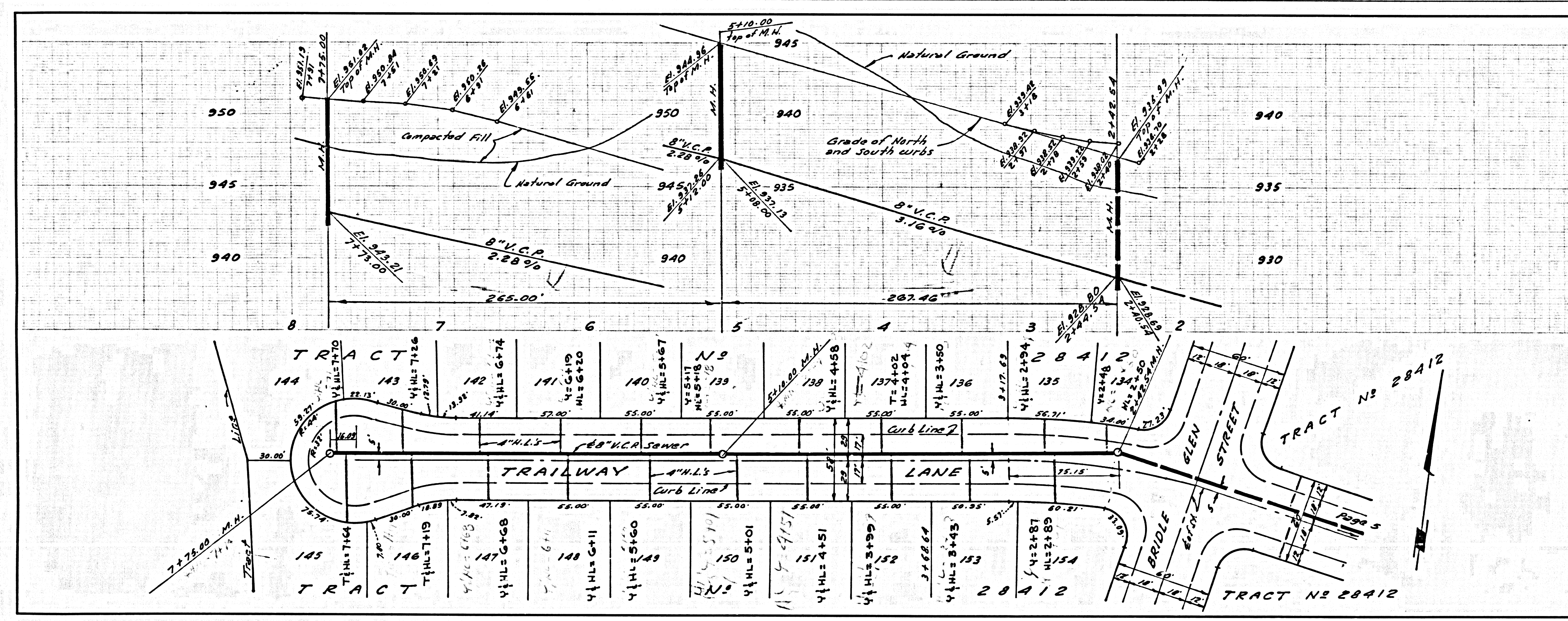




NO CHARGE FOR CONNECTIONS FOR COUNTY OF L.A.

SEE L.V.M.M.D. FOR PERMITS AND CHARGES

40644



SEE L.V.M.M.D. FOR PERMITS AND CHARGES

NO CHARGE FOR CONNECTIONS FOR COUNTY OF L.A.

40645