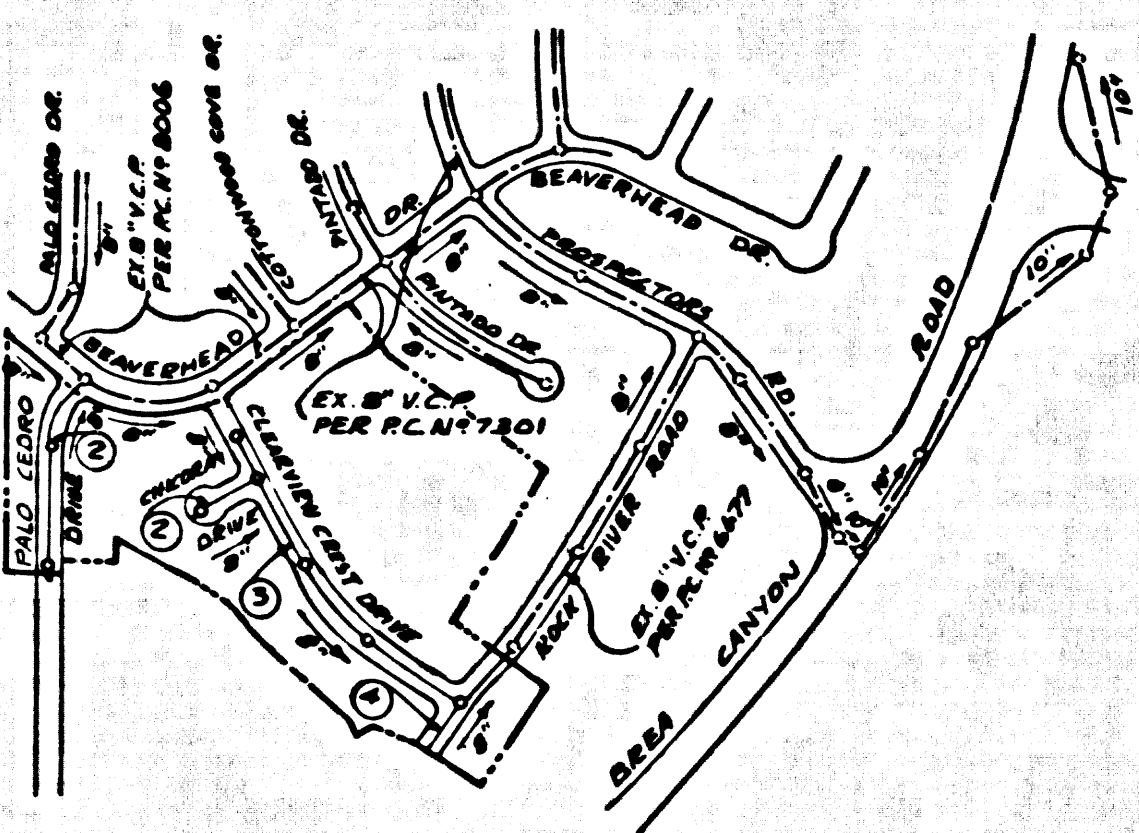


B.M. 50 2061 ELEV. 719.998  
 R.D. B.M. TAG IN CONC. WALK  
 AROUND FOUNTAIN 6" E. OF W.  
 EDGE & 7' ELY. & INT. SLY. & INT. BREA  
 CANYON ROAD & DIAMOND GARD. BLVD.  
 OTTERBEIN QUAD. 1955



NOTE: Numbers in circles indicate page numbers.

INDEX MAP  
 TRACT No 28037  
 P.C. 8076  
 SCALE: 1" = 600'

- County Sanitation Districts shall be notified prior to the following so that required inspection can be made (Phone 3371025)
- (1) Commencement of construction of manhole on District trunk sewer.
  - (2) Breaking into existing manhole on District trunk sewer.
  - (3) Core drilling District trunk sewer.
  - (4) Construction of house connections to District trunk sewer.
  - (5) Acceptance of the project.

NO CONNECTIONS FOR THE DISPOSAL OF INDUSTRIAL WASTES SHALL BE MADE TO SEWERS SHOWN ON THESE DRAWINGS WITHOUT WRITTEN PERMISSION FROM THE CHIEF ENGINEER AND GENERAL MANAGER OF THE COUNTY SANITATION DISTRICTS.

REVISION # 11-17-69 ADDED  
 2 HOUSE LATERALS PAGE 3  
 APPROVED *[Signature]*  
 OFFICE OF COUNTY ENGINEER

REVISION # 10-8-69  
 1. ELIMINATE M.H. @ STA. 13+27.00  
 2. ADD S' OF 8" V.C.P. SEWER 170' BETWEEN STATIONS 13+22.50 & 13+22.50 18.4'  
 3. LOWER THE GRADE BETWEEN STA. 11+88.17 & 13+27.00 FROM 0.72% TO 0.67%  
 APPROVED *[Signature]*  
 OFFICE OF COUNTY ENGINEER (C.R.E.N.)

ISSUE NO HOUSE CONNECTION PERMITS UNTIL P.C. No. 8006 IS ACCEPTED.

LOTS 7, 8, 15, 16 & 42 SERVED BY EXIST. SEWER IN P.C. 8006

SAN DIMAS BLDG. DIST. NO. 10

- NOTE:
1. HOUSE STAKES ON THE PROPERTY LINE OR PROPERTY LINES PRODUCED AT RIGHT ANGLES TO THE SEWER LINE AT THE CENTER LINE OF EACH MANHOLE.
  2. NO REPRESENTATIVE OF THE COUNTY ENGINEER WILL SURVEY OR LAY OUT ANY PORTION OF THE WORK.
  3. THE PRIVATE ENGINEER SHALL FURNISH THE COUNTY ENGINEER WITH GRADE SHEETS AND STATIONING FOR ALL HOUSE LATERALS AND "T" OR "Y" BRANCHES AND SHALL PROVIDE STAKES FOR THEM AT THEIR PROPER LOCATIONS WITH ELEVATIONS PLAINLY MARKED. ALL HOUSE LATERALS SHALL BE CONSTRUCTED IN A STRAIGHT ALIGNMENT AT RIGHT ANGLES FROM THE MAIN LINE SEWER EXCEPT AS SHOWN ON THE PLANS. HOUSE LATERALS FROM CHIMNEYS SHALL NOT HAVE AN ANGLE OF LESS THAN 45° WITH THE MAIN LINE SEWER. ANY CHANGE IN ALIGNMENT SHALL BE REQUESTED IN WRITING BY THE PRIVATE ENGINEER.
  4. THE PRIVATE ENGINEER SHALL FURNISH THE HOUSE LATERAL DEPTH AT THE PROPERTY LINE BELOW THE TOP OF CURB ELEVATION FOR EACH HOUSE LATERAL ON THE GRADE SHEET.
  5. NO REVISIONS SHALL BE MADE IN THESE PLANS WITHOUT THE APPROVAL OF THE COUNTY ENGINEER.
  6. THE CONTRACTOR SHALL NOTIFY THE CONSTRUCTION DIVISION BY TELEPHONE, MADISON 9-4147, EXT. 81551, AT LEAST TWENTY-FOUR HOURS BEFORE STARTING ANY WORK UNDER THIS CONTRACT.
  7. ALL STRUCTURES SHALL BE EITHER BRICK MANHOLES PER S-3 OR PRECAST CONCRETE MANHOLES PER S-4 OR S-4, EXCEPT AS NOTED.
  8. "T" OR "Y" BRANCHES MAY BE LAYED FROM CONNECTION TO MAIN LINE SEWER EXCEPT AS NOTED.
  9. MANHOLE TOPS IN UNIMPROVED RIGHTS-OF-WAY TO BE SIX INCHES ABOVE FINISHED GRADE.
  10. USE EXTRA STRENGTH PIPE. ALL PIPE IS STANDARD DEPTH EXCEPT AS NOTED.
  11. VITRIFIED CLAY PIPE JOINTS SHALL BE TYPE "D" 15" OR 18" DIA. STD. SPEC. SEC. 800-2.
  12. IF A POWER POLE IS WITHIN THREE FEET OF THE SEWER, THE SEWER SHALL BE ENCASED, PER S-23, TWO FEET ON EACH SIDE FROM THE POINT OF INTERFERENCE.
  13. IF DURING THE COURSE OF CONSTRUCTION IT IS DETERMINED THAT THERE IS LESS THAN FOUR FEET OF COVER OVER THE TOP OF A MAIN LINE OR HOUSE LATERAL V.C.P. SEWER WHICH IS NOT INDICATED ON THE PLANS, THE PIPE SHALL BE ENCASED PER S-23, UNLESS OTHERWISE APPROVED BY THE COUNTY ENGINEER.
  14. HOUSE LATERALS TO BE CONSTRUCTED WITH INVERTS AT PROPERTY LINE & FEET BELOW CURB GRADE EXCEPT AS NOTED.
  15. RESURFACE ALL TRENCHES WITHIN PAVED AREAS TO MEET L.A. COUNTY ROAD DEPT. OR CALIFORNIA STATE HIGHWAY REQUIREMENTS IN ACCORDANCE WITH PERMITS.
  16. SEWERS TO BE TESTED FOR LEAKAGE PER SECTION 306-2.3.7 UNIFORM STANDARD SPECIFICATIONS.
  17. REFER TO SECTION 7-10.4.1 OF THE STANDARD SPECIFICATIONS, REGARDING SAFETY CORDS.
  18. SPECIAL BACKFILL IN DESIGNATED AREAS:  
 (a) BACKFILL TRENCH AND REPLACE OTHER EARTH REMOVED SO AS TO ACHIEVE THE NATURAL OR FINISHED GRADES AND SLOPES SHOWN ON THE GRADING PLAN APPROVED FOR THIS TRACT BY THE BUILDING AND SAFETY DIVISION.  
 (b) ALL BACKFILL AND EARTH REPLACES SHALL BE COMPACTED TO A MINIMUM OF 90% OF MAXIMUM DENSITY PER A.S.T.M. STAND. AND METHOD OF TEST 99A-57 AS NOTED. ACCURATE CERTIFICATION OF SUCH COMPACTION SHALL BE SUBMITTED TO THE CONSTRUCTION DIVISION.  
 (c) ALL JOINTS BETWEEN CAST IRON IRON AND VITRIFIED CLAY PIPE SHALL BE MADE WITH A RUBBER SLIP JOINT, TYPE "C" OR "D" (WITH BUSHING IF NECESSARY) AND STANDARD SPECIFICATIONS, SECTION 800-2.

THE FOLLOWING COUNTY ENGINEER STANDARD PLANS APPLY TO THIS PROJECT

LEGEND	S-1
MINIMUM PUBLIC SAFETY REQUIREMENTS	S-2
BRICK MANHOLE	S-3
NON-REINFORCED PRECAST CONCRETE MANHOLE	S-4
REINFORCED PRECAST CONCRETE MANHOLE	S-5
MANHOLE FRAME AND COVER	S-6
MANHOLE STEP	S-7
BEDDING FOR SEWER PIPE	S-8
CRADLING AND ENCASEMENT	S-9
WYE OR TEE SUPPORT	S-10
ALLOWABLE TRENCH WIDTHS	S-11

COLLECT CHARGES AS INDICATED

PROFILE ALIGNMENT AND GRADE OF  
 SANITARY SEWERS P.C. 8076  
 CONSTRUCTED IN PAGE 1

TRACT No 28037  
 PRIVATE CONTRACT NO. 8076

W.S. 39C-2  
 2 SHEETS; 4 PAGES  
 SCALE: VERT. 1" = 4'  
 HORIZ. 1" = 40'  
 JUNE, 1968  
 PREPARED IN THE OFFICES OF  
 KEMMERER ENGR. CO. INC.  
 6705 SOUTH PAINTER AVENUE, WHITTIER, CALIF.  
 BY *[Signature]*  
 REG. C. E. NO. 11348

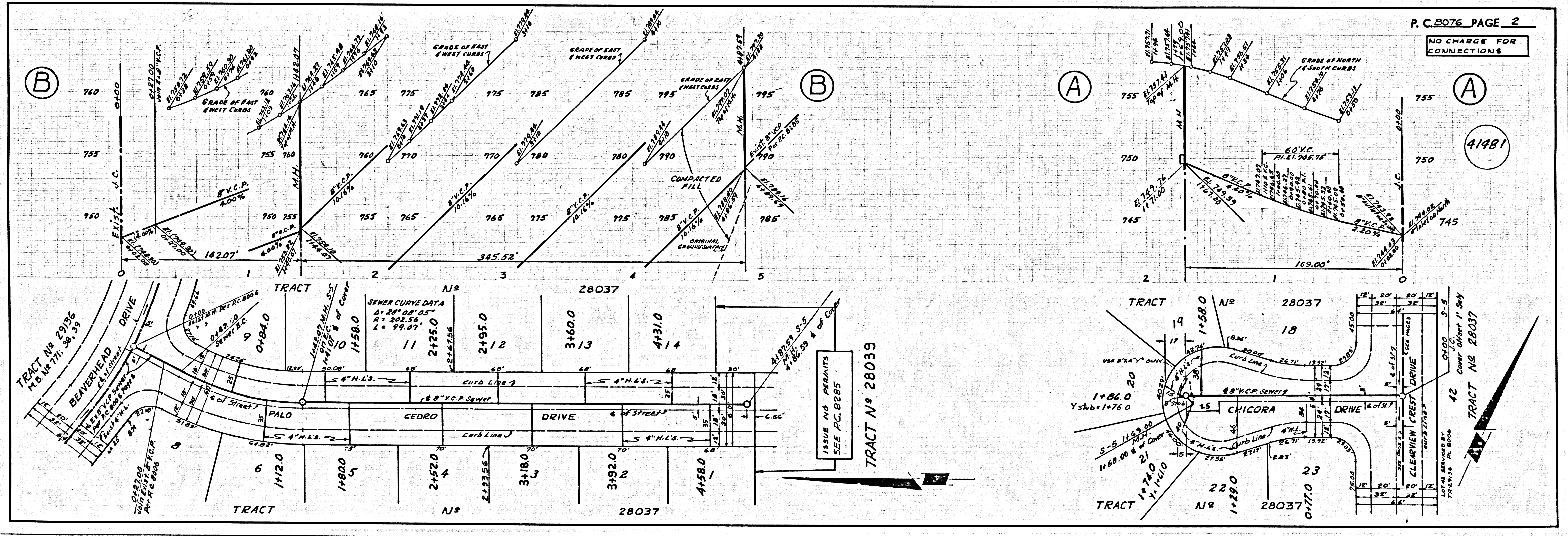
FOR LEGEND SEE PLAN NO. S-1

NOTE:  
 GRADES TO WHICH THIS IMPROVEMENT IS TO BE CONSTRUCTED ARE SHOWN ON PLANS AND PROFILES. GRADE POINTS FOR TOP OF CURBS, CENTER LINE OF STREETS, OR CENTER LINE OF ALLEYS ARE SHOWN BY CIRCLES ON PROFILES. AT ALL POINTS BETWEEN DESIGNATED POINTS THE GRADE SHALL BE ESTABLISHED SO AS TO CONFORM TO A STRAIGHT LINE DRAWN BETWEEN SAID DESIGNATED POINTS. ELEVATIONS ARE IN FEET ABOVE U.S.C. & G.S. SEA LEVEL DATUM OF 1929.  
 THIS DRAWING AND THE STANDARD SPECIFICATIONS FOR PUBLIC WORKS CONSTRUCTION AND COUNTY ENGINEER SPECIFICATIONS DATED FEBRUARY 1968, AS REVISED, AND SHALL BE PROTECTED UNDER THE PRESENCE OF THE COUNTY ENGINEER.  
 BEFORE WORK CAN BE STARTED, THE CONTRACTOR MUST OBTAIN A PERMIT TO EXCAVATE ON COUNTY STREETS FROM THE L.A. COUNTY ROAD DEPT., DISTRICT OFFICE NO. 10, AND PAY A FEE TO THE COUNTY ENGINEER, ROOM 390, COUNTY ENGINEERING BUILDING, 100 WEST SECOND STREET, LOS ANGELES, CALIFORNIA. REGIONAL OFFICE, SUFFICIENT TO COVER THE COST OF CONSTRUCTION INSPECTION AND RECORD PLANS.  
 APPROVAL OF THIS PLAN BY THE COUNTY ENGINEER DOES NOT CONSTITUTE A REPRESENTATION AS TO THE ACCURACY OF THE LOCATION OF OR THE EXISTENCE OR NON-EXISTENCE OF ANY UNDERGROUND UTILITY PIPE, OR STRUCTURE WITHIN THE LIMITS OF THIS PROJECT. THIS NOTE APPLIES TO ALL PAGES.  
 IF WORK IS TO BE DONE IN A STATE HIGHWAY, A PERMIT MUST BE OBTAINED FROM THE STATE OF CALIFORNIA, DIVISION OF HIGHWAYS, 120 SOUTH SPRING STREET, LOS ANGELES, CALIFORNIA.

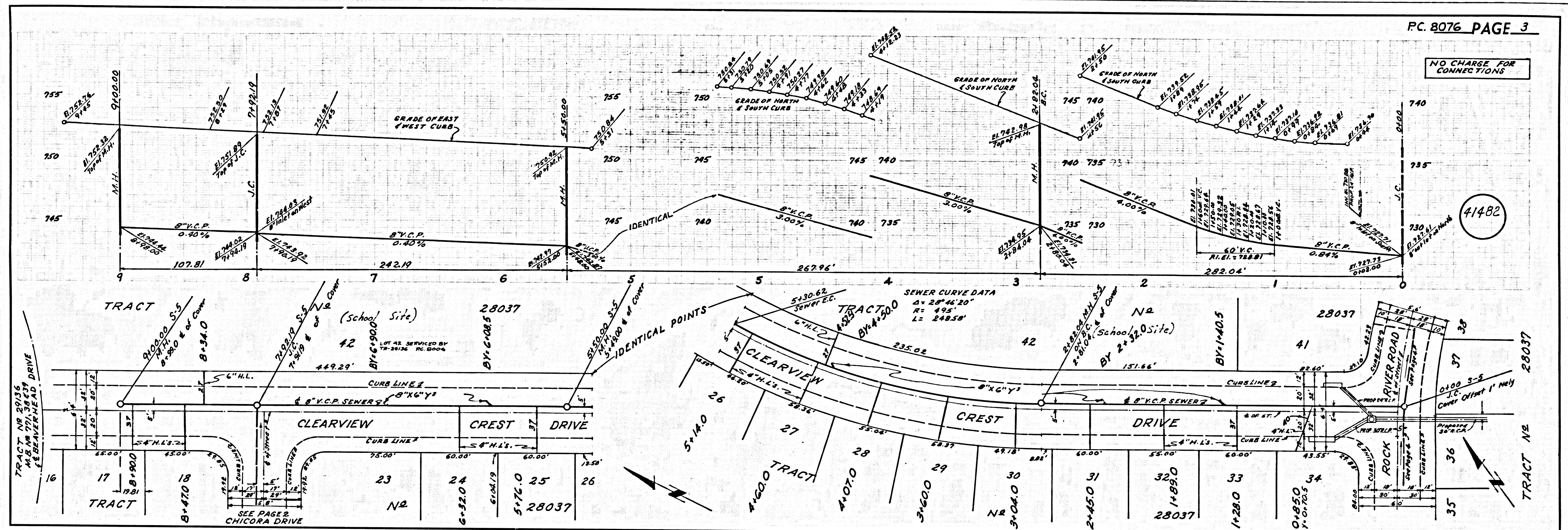
COUNTY OF LOS ANGELES, CALIFORNIA  
 JOHN A. LAMBIE, COUNTY ENGINEER  
 J. D. PARKHURST, CHIEF ENGINEER  
 CO. SAN DIST. NO. 10  
 APPROVED BY *[Signature]* APPROVED BY *[Signature]*  
 SAN DIMAS REGIONAL ENGINEER OFFICE ENGINEER

CHECKED BY *[Signature]* 8-17-68  
 REG. C. E. NO. 12843

J. N. 0250.02

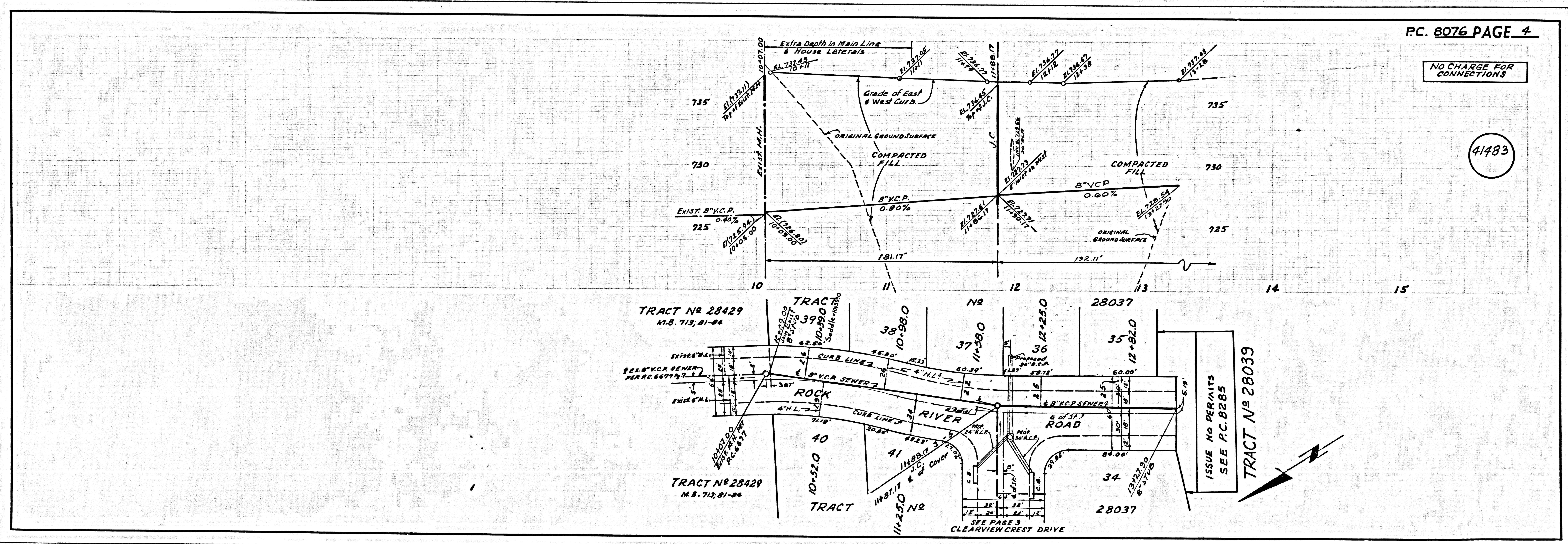


NO CHARGE FOR CONNECTIONS



41482

NO CHARGE FOR CONNECTIONS



41483