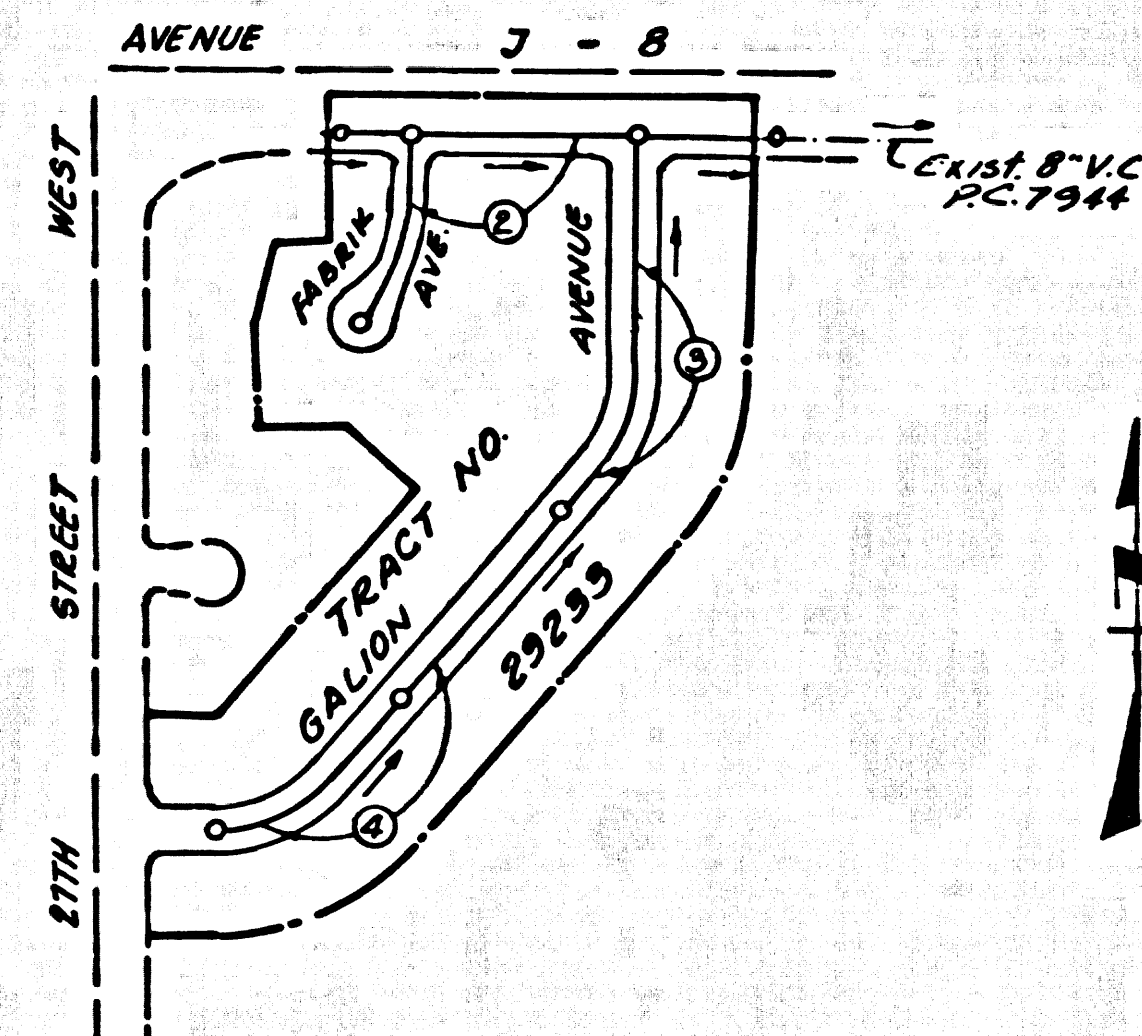


P.C. 8080

B.M. S.L-721 ELEV. 2388.228
L & T CONC. DRIVE NEAR CONC. BLOCK POST ± 42'S.
± AVE. K ± 263' W ± 25th ST. W. MKD. B.M.
LANCASTER QUAD. 1962



County Sanitation Districts shall be notified prior to the following so that required inspection can be made (Phone 467-1022)

- (1) Commencement of construction of manhole on District trunk sewer.
- (2) Breaking into existing manhole on District trunk sewer.
- (3) Core drilling District trunk sewer.
- (4) Construction of house connections to District trunk sewer.

(5) Acceptance of the project.

THE FOLLOWING COUNTY ENGINEER STANDARD PLANS APPLY TO THIS PROJECT

LEGEND	S-1
MINIMUM EXCAVATION SAFETY REQUIREMENTS	S-2
BRICK MANHOLE	S-3
NON-REINFORCED PRECAST CONCRETE MANHOLE	S-5
REINFORCED PRECAST CONCRETE MANHOLE	S-6
MANHOLE FRAME AND COVER	S-7
MANHOLE 5-TOP	S-17
BEDDING FOR SEWER PIPE	S-21
CRANDING AND ENCASUREMENT	S-23
WYE OR TEE SUPPORT	S-26
ALLOWABLE TRENCH WIDTHS	S-33

LANCASTER BLDG. DIST. NO. 8

- NOTES**
1. PROVIDE STAKES ON THE PROPERTY LINE OR PROPERTY LINES PRODUCED AT RIGHT ANGLES TO THE SEWER LINE AT THE CENTER LINE OF EACH MANHOLE.
 2. NO REPRESENTATIVE OF THE COUNTY ENGINEER WILL SURVEY OR LAY OUT ANY PORTION OF THE WORK.
 3. THE PRIVATE ENGINEER SHALL FURNISH THE COUNTY ENGINEER WITH GRADE SHEETS AND STATIONING FOR ALL HOUSE LATERALS AND BRANCHES AND SHALL PROVIDE STAKES FOR THEM AT THEIR PROPER LOCATIONS WITH STATIONING CLEARLY MARKED. ANY CHANGE IN LOCATION SHALL BE REQUESTED IN WRITING BY THE PRIVATE ENGINEER. ALL HOUSE LATERALS SHALL BE CONSTRUCTED AS A STANDARD PLANMENT AT THE PROPERTY LINE.
 4. THE PRIVATE ENGINEER SHALL FURNISH THE HOUSE LATERAL DEPTH AT THE PROPERTY LINE BELOW THE TOP OF CURB ELEVATION FOR EACH HOUSE LATERAL ON THE GRADE SHEET.
 5. NO REVISIONS SHALL BE MADE IN THESE PLANS WITHOUT THE APPROVAL OF THE COUNTY ENGINEER.
 6. USE STANDARD MANHOLE FRAMES AND COVERS, S-75, EXCEPT AS NOTED.
 7. USE 8" V.C.P. WITH THE ALL PIPE IS STANDARD S.P.P. EXCEPT AS NOTED.
 8. UNGRADED CLAY PIPE SHALL BE 18" x 24" x 36" FOR THE SPEC. S.P.P. S-2.
 9. RESURFACE ALL TRENCH WITHIN PAVED AREA TO MEET L.A. COUNTY ROAD DEPT. OR CALIF. STATE HIGHWAY REQUIREMENTS IN ACCORDANCE WITH PERMITS.
 10. HOUSE LATERALS FROM CHIMNEYS SHALL BE CONSTRUCTED AS 18" x 24" x 36" S.P.P. WITH THE 18" x 24" x 36" S.P.P. AT THE CENTER LINE OF EACH MANHOLE.
 11. HOUSE LATERALS TO BE CONSTRUCTED WITH INVERTS AT PROPERTY LINE 6" FEET BELOW CURB GRADE EXCEPT AS NOTED.
 12. ALL STRUCTURES SHALL BE EITHER BRICK MANHOLES PER S-3, OR PRECAST CONCRETE MANHOLES PER S-5 OR S-6.
 13. TRENCHES TO BE TESTED FOR LEAKAGE PER SECTION 104-4, 17 STANDARD SPECIFICATIONS.
 14. MANHOLE TOPS IN UNIMPROVED RIGHTS-OF-WAY TO BE SIX INCHES ABOVE FINISHED GRADE.
 15. THE CONTRACTOR SHALL NOTIFY THE CONSTRUCTION & STORM DRAIN DIVISION BY TELEPHONE, MADISON 9-4741, AT LEAST LEAST TWENTY-FOUR HOURS BEFORE STARTING ANY WORK UNDER THIS CONTRACT.
 16. IF A POWER POLE IS WITHIN THREE FEET OF THE TRENCH, THE TRENCH SHALL BE ENCASED PER S-23. TWO FEET ON EACH SIDE FROM THE POINT OF INTERFERENCE.
 17. IF DURING THE COURSE OF CONSTRUCTION IT IS DETERMINED THAT THERE IS LESS THAN FOUR FEET OF COVER OVER THE TRENCH, THE CONTRACTOR SHALL BE RESPONSIBLE FOR THE PROTECTION OF THE TRENCH AND THE PUBLIC THEREON. THE CONTRACTOR SHALL BE ADVISED PER S-23, UNLESS OTHERWISE NOTED BY THE COUNTY ENGINEER.
 18. REFER TO SECTION T-11, 4.1 OF THE STANDARD SPECIFICATIONS, REGARDING TRENCH SAFETY BARBERS.
 19. TREES MAY BE USED IN PLACE OF WYES AND AT THE SAME ANGLE OF INCLINATION AS WYES, EXCEPT AS NOTED.

NOTICE TO CONTRACTORS

The existence and location of any underground utility pipes or structures shown on these plans are obtained by a search of the available records to the best of our knowledge. There are no existing utilities except as shown on these plans. The Contractor is required to take due precautionary measures to protect the utility lines shown and any other lines not of record or not shown on these plans.

J. H. Mearns
C.C.E. 12951

COLLECT CHARGES AS INDICATED.

J. H. Mearns

PROFILE ALIGNMENT AND GRADE OF **P.C. 8080**
SANITARY SEWERS PAGE 1
TO BE CONSTRUCTED IN

TRACT NO 29233
PRIVATE CONTRACT NO. 8080

W.S. 71
2 SHEETS: 4 PAGES
SCALE: VERT. 1"=4' HORIZ. 1"=40'
JANUARY, 1968
PREPARED IN THE OFFICES OF
SCHORR ENGINEERS
13609 VICTORY BLVD. VAN NUYS
REG. C. E. NO. 18855

40019

FOR LEGEND SEE PLAN NO. S-A-64

NOTE: GRADES TO WHICH THIS IMPROVEMENT IS TO BE CONSTRUCTED ARE SHOWN ON PLANS AND PROFILES. GRADE POINTS FOR TOP OF CURBS, CENTER LINE OF STREETS, OR CENTER LINE OF ALLEYS ARE SHOWN BY CIRCLES ON PROFILES. AT ALL POINTS BETWEEN DESIGNATED POINTS THE GRADE SHALL BE ESTABLISHED SO AS TO CONFORM TO A STRAIGHT LINE DRAWN BETWEEN SAID DESIGNATED POINTS.

ELEVATIONS ARE IN FEET ABOVE U.S.C. & G.S. SEA LEVEL DATUM OF 1929.

THIS DRAWING AND THE DATA HEREON ARE HEREBY MADE A PART OF THE SPECIFICATIONS AND SHALL BE CONSIDERED AS SUCH BY THE CONTRACTOR. THE CONTRACTOR SHALL BE RESPONSIBLE FOR THE PROTECTION OF THE TRENCH AND THE PUBLIC THEREON. THE CONTRACTOR SHALL BE ADVISED PER S-23, UNLESS OTHERWISE NOTED BY THE COUNTY ENGINEER.

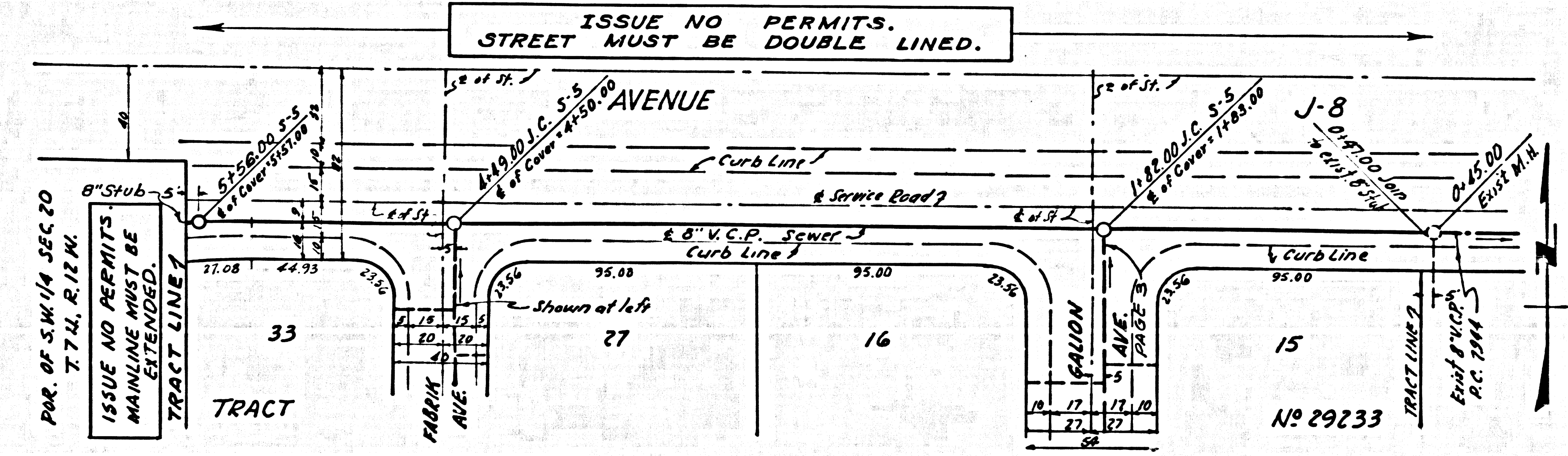
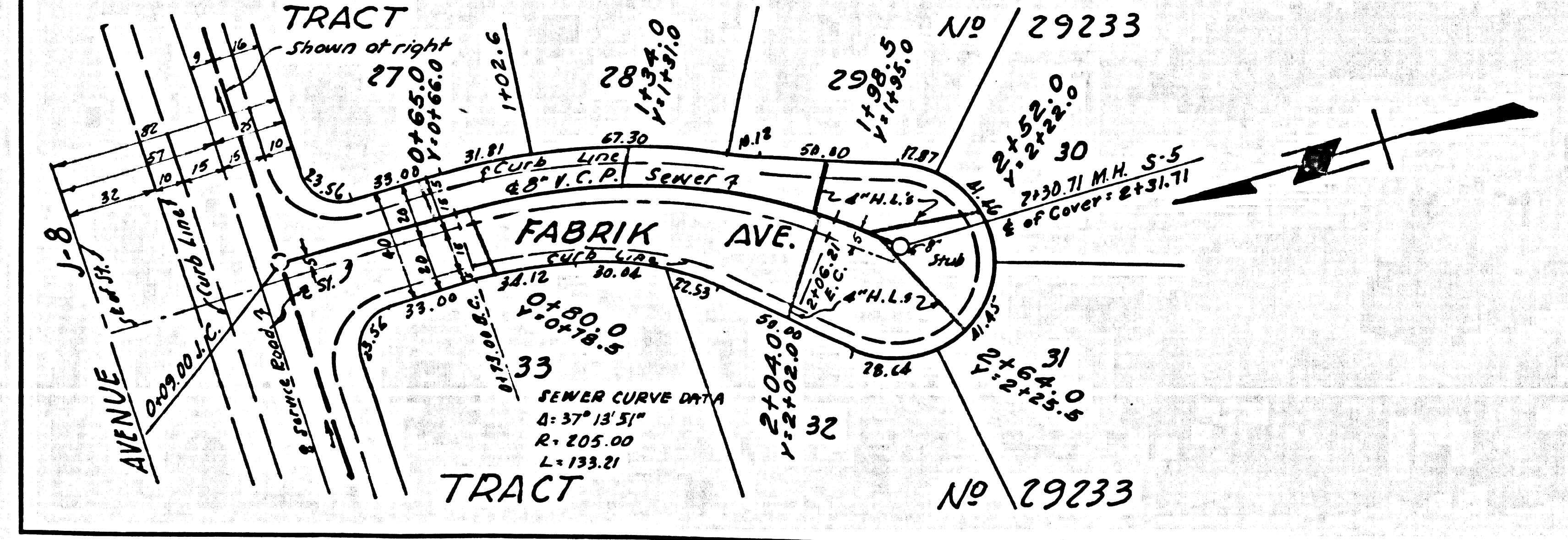
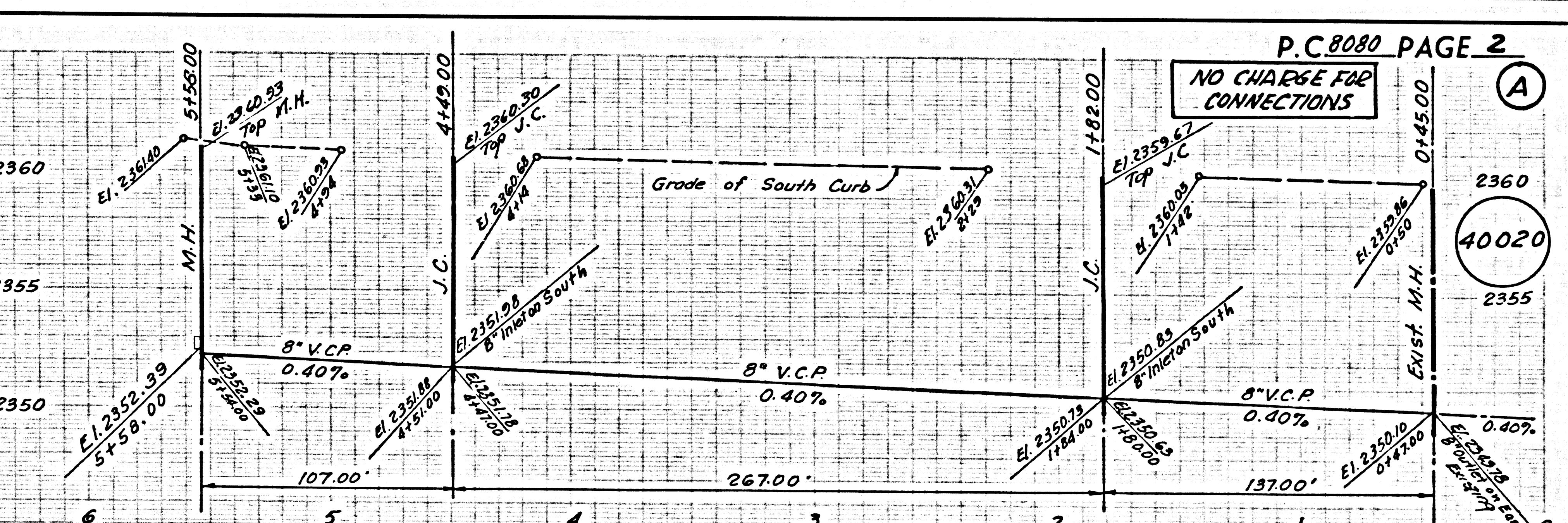
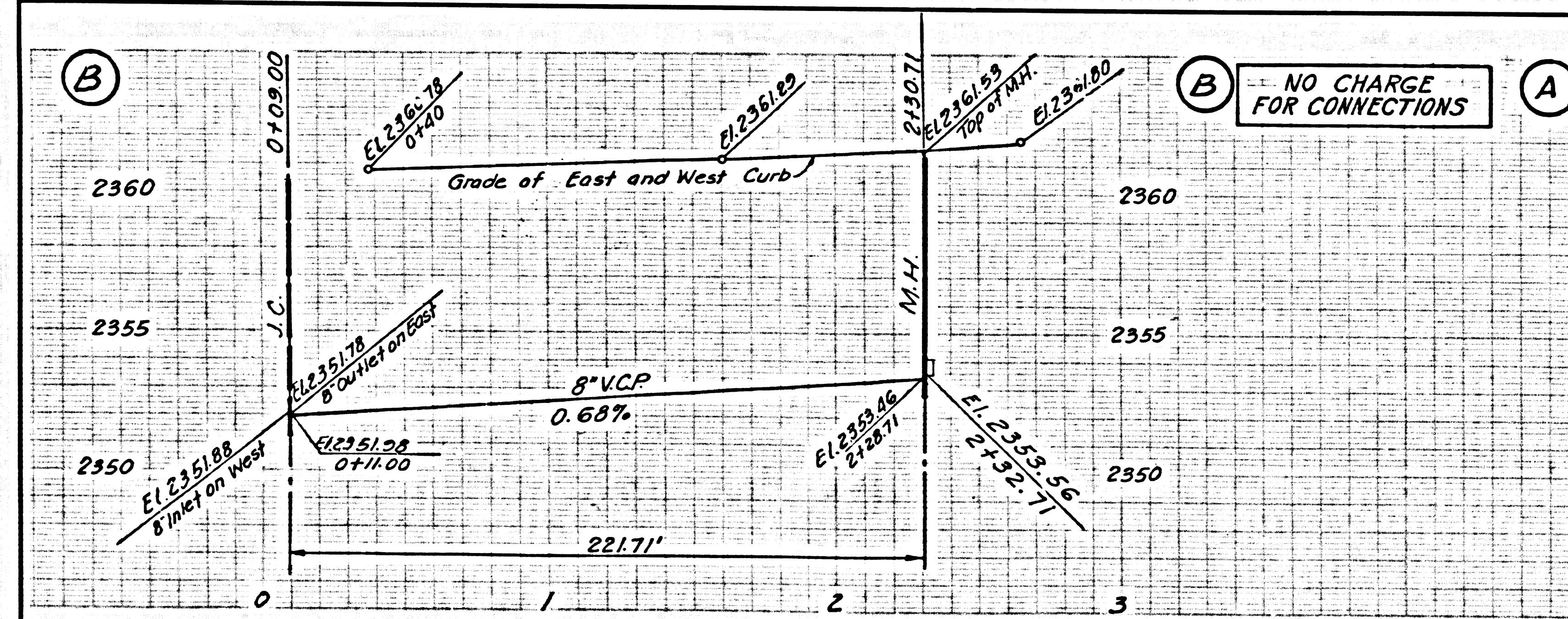
APPROVED BY *John A. Lambie* COUNTY ENGINEER
APPROVED BY *J. D. Parkhurst* CHIEF ENGINEER
CO. SAN. DIST. NO. 18

CHECKED BY *Richard J. Hopely* 6/17/68
REG. C. E. NO. 16742

COUNTY OF LOS ANGELES, CALIFORNIA

J.N. 0250.02

P.C. 8080



P.C. 8080 PAGE 2

40020

