

B.M. 5G 60A ELEV. 529.297
 Sd. Hd. Spk. west curb 5 ft north of 5' CR @ S.W. corner of
 Cypress St and Hollenbeck Ave., 65' south and 55' west
 of E. intersection.
 COVINA QUAD. 19.60

THE FOLLOWING COUNTY ENGINEER STD. PLANS APPLY TO THIS PROJECT:

LEGEND	
MINI. PUBLIC SAFETY REQUIREMENTS	S-1
BRICK MANHOLES	S-2
NON REINFORCED PRECAST CONCRETE MANHOLES	S-3
REINFORCED PRECAST CONCRETE MANHOLES	S-4
MANHOLE FRAME AND COVER	S-15
MANHOLE STEP	S-17
SHEDDING FOR SEWER PIPE	S-21
CRADLING AND ENCASMENT	S-23
WYE OR TEE SUPPORT	S-26
ALLOWABLE TRENCH WIDTHS	S-28

SAN DIMAS BLDG. DIST. NO. 10

PROFILE ALIGNMENT AND GRADE OF
SANITARY SEWERS P.C. 8082
 CONSTRUCTED IN PAGE 1
COVINA BOULEVARD

FROM FIRCCROFT AVENUE TO 250' EASTERLY
PRIVATE CONTRACT NO. 8082

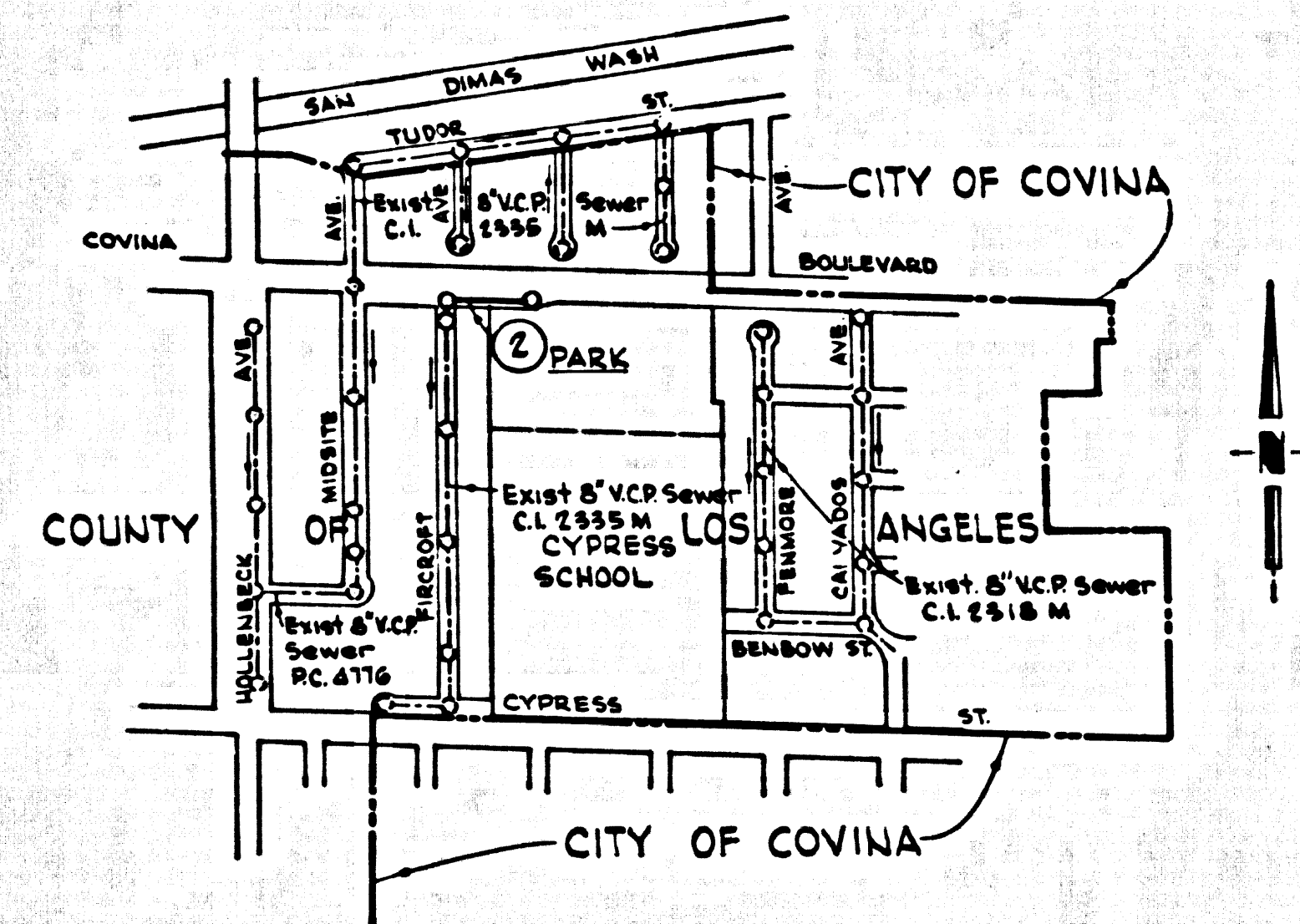
W.S. 47
 1 SHEET ; 2 PAGES

SCALE: VERT. 1"=4'
 HORIZ. 1"=40'
 JUNE , 1968

41074

PREPARED IN THE OFFICES OF
WALSH-FORKERT-HUTCHISON CIVIL ENGINEERS, INC.
 1600 W. CAMERON AVE. WEST COVINA, CALIFORNIA
 REG. C.E. NO. 8983

FOR LEGEND SEE PLAN NO. S-1



INDEX MAP
 SCALE 1"=600'
 P.C. 8082

- NOTES:
1. PROVIDE STAKES ON THE PROPERTY LINE OR PROPERTY LINES PRODUCED AT RIGHT ANGLES TO THE SEWER LINE AT THE CENTER LINE OF EACH MANHOLE.
 2. NO REPRESENTATIVE OF THE COUNTY ENGINEER WILL SURVEY OR LAY OUT ANY PORTION OF THE WORK.
 3. THE PRIVATE ENGINEER SHALL FURNISH THE COUNTY ENGINEER WITH GRADE SHEETS AND STATIONING FOR ALL HOUSE LATERALS AND "T" OR "Y" BRANCHES AND SHALL PROVIDE STAKES FOR THEM AT THEIR PROPER LOCATIONS WITH STATIONING PLAINLY MARKED. ALL HOUSE LATERALS SHALL BE CONSTRUCTED IN A STRAIGHT ALIGNMENT AT RIGHT ANGLES FROM THE MAIN LINE SEWER EXCEPT AS SHOWN ON THE PLANS. HOUSE LATERALS FROM CHIMNEYS SHALL NOT HAVE AN ANGLE OF LESS THAN 45° WITH THE MAIN LINE SEWER. ANY CHANGE IN ALIGNMENT SHALL BE REQUESTED IN WRITING BY THE PRIVATE ENGINEER.
 4. THE PRIVATE ENGINEER SHALL FURNISH THE HOUSE LATERAL DEPTH AT THE PROPERTY LINE BELOW THE TOP OF CURB ELEVATION FOR EACH HOUSE LATERAL ON THE GRADE SHEET.
 5. NO REVISIONS SHALL BE MADE IN THESE PLANS WITHOUT THE APPROVAL OF THE COUNTY ENGINEER.
 6. THE CONTRACTOR SHALL NOTIFY THE CONSTRUCTION DIVISION BY TELEPHONE, MADISON 9-4707, EXT. 81591, AT LEAST TWENTY-FOUR HOURS BEFORE STARTING ANY WORK UNDER THIS CONTRACT.
 7. ALL STRUCTURES SHALL BE EITHER BRICK MANHOLES PER S-3 OR PRECAST CONCRETE MANHOLES PER S-3 OR S-4, EXCEPT AS NOTED.
 8. "Y" OR "T" BRANCHES MAY BE USED FOR CONNECTIONS TO MAINLINE SEWERS EXCEPT AS NOTED.
 9. MANHOLE TOPS IN UNIMPROVED RIGHTS-OF-WAY TO BE SIX INCHES ABOVE FINISHED GRADE.
 10. USE EXTRA STRENGTH PIPE. ALL PIPE IS STANDARD DEPTH EXCEPT AS NOTED.
 11. VITRIFIED CLAY PIPE JOINTS SHALL BE TYPE "D", "P" OR "A" PER STD. SPEC. 508-2.
 12. IF A POWER POLE IS WITHIN THREE FEET OF THE SEWER, THE SEWER SHALL BE ENCASED, PER S-23, TWO FEET ON EACH SIDE FROM THE POINT OF INTERFERENCE.
 13. IF DURING THE COURSE OF CONSTRUCTION IT IS DETERMINED THAT THERE IS LESS THAN FOUR FEET OF COVER OVER THE TOP OF A MAIN LINE OR HOUSE LATERAL V.C.P. SEWER WHICH IS NOT INDICATED ON THE PLANS, THE PIPE SHALL BE ENCASED PER S-23, UNLESS OTHERWISE APPROVED BY THE COUNTY ENGINEER.
 14. HOUSE LATERALS TO BE CONSTRUCTED WITH INVERTS AT PROPERTY LINE 4 FEET BELOW CURB GRADE EXCEPT AS NOTED.
 15. RESURFACE ALL TRENCHES WITHIN PAVED AREAS TO MEET L.A. COUNTY ROAD DEPT. OR CALIFORNIA STATE HIGHWAY REQUIREMENTS IN ACCORDANCE WITH PERMITS.
 16. SEWERS TO BE TESTED FOR LEAKAGE PER SECTION 306.2.2.7 UNIFORM STANDARD SPECIFICATIONS.
 17. REFER TO SECTION 7-10.4.1, THE STANDARD SPECIFICATIONS REGARDING SAFETY ORDERS.
 18. SPECIAL BACKFILL IN DESIGNATED AREAS:
 (a) BACKFILL TRENCH AND BRIDGE OTHER EARTH RECOVERED SO AS TO ACHIEVE THE NATURAL OR FINISHED GRADES AND SLOPES SHOWN ON THE GRADING PLAN APPROVED FOR THIS TRACT BY THE BUILDING AND SAFETY DIVISION.
 (b) ALL BACKFILL AND EARTH REPLACED SHALL BE COMPACTED TO A MINIMUM OF 90% OF MAXIMUM DENSITY PER A 3" T.M. STANDARD METHOD OF TEST D95-57 AS MODIFIED. ACCEPTABLE CERTIFICATION OF SUCH COMPACTION SHALL BE SUBMITTED TO THE CONSTRUCTION DIVISION.
 19. ALL JOINTS BETWEEN CAST IRON PIPE AND VITRIFIED CLAY PIPE SHALL BE MADE WITH A RUBBER GULF SEWER JOINT TYPE "C" OR "O" (WITH BUSHING IF NECESSARY) PER STANDARD SPECIFICATIONS, SECTION 508-2.

County Sanitation Districts shall be notified prior to the following so that required inspection can be made (Phone 337-1025 or 800-80991)

Acceptance of the project.

COLLECT CHARGES AS INDICATED

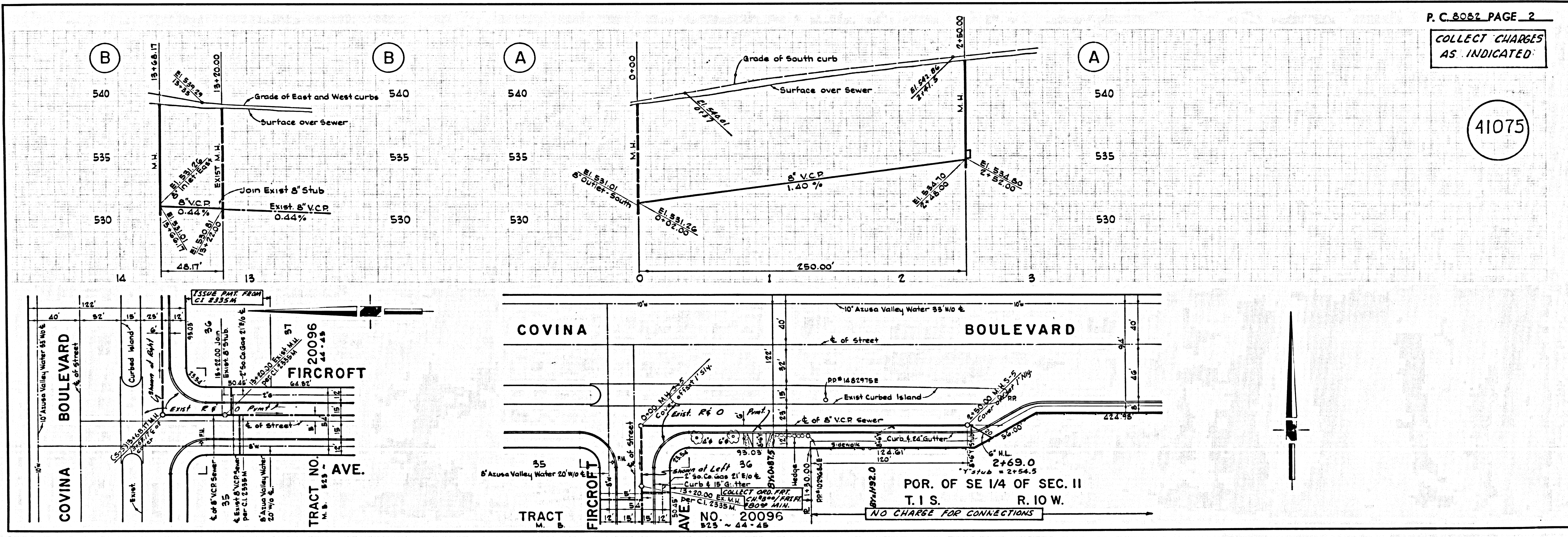
NO CONNECTIONS FOR THE DISPOSAL OF INDUSTRIAL WASTES SHALL BE MADE TO SEWERS SHOWN ON THESE DRAWINGS WITHOUT WRITTEN PERMISSION FROM THE CHIEF ENGINEER AND GENERAL MANAGER OF THE COUNTY SANITATION DISTRICTS.

GRADES TO WHICH THIS IMPROVEMENT IS TO BE CONSTRUCTED ARE SHOWN ON PLANS AND PROFILES. GRADE POINTS FOR TOP OF CURBS, CENTER LINE OF STREETS, OR CENTER LINE OF ALLEYS ARE SHOWN BY CIRCLES ON PROFILES AT ALL POINTS BETWEEN DESIGNATED POINTS. THE GRADE SHALL BE ESTABLISHED SO AS TO CONFORM TO A STRAIGHT LINE DRAWN BETWEEN SAID DESIGNATED POINTS. ELEVATIONS ARE IN FEET ABOVE U.S.C. & G.S. SEA LEVEL DATUM OF 1929.

COUNTY OF LOS ANGELES, CALIFORNIA
 JOHN A. LAMBIE, COUNTY ENGINEER
 APPROVED BY: *B.T. Worling* SAN DIMAS REGIONAL ENGINEER

J. D. PARKHURST, CHIEF ENGINEER
 APPROVED BY: *J. D. Parkhurst* OFFICE ENGINEER

CHECKED BY: *J. D. Parkhurst* 9-18-68
 REG. C.E. NO. 10283
 J.N. 0369.15



P.C. 8082 PAGE 2
COLLECT CHARGES AS INDICATED

41075