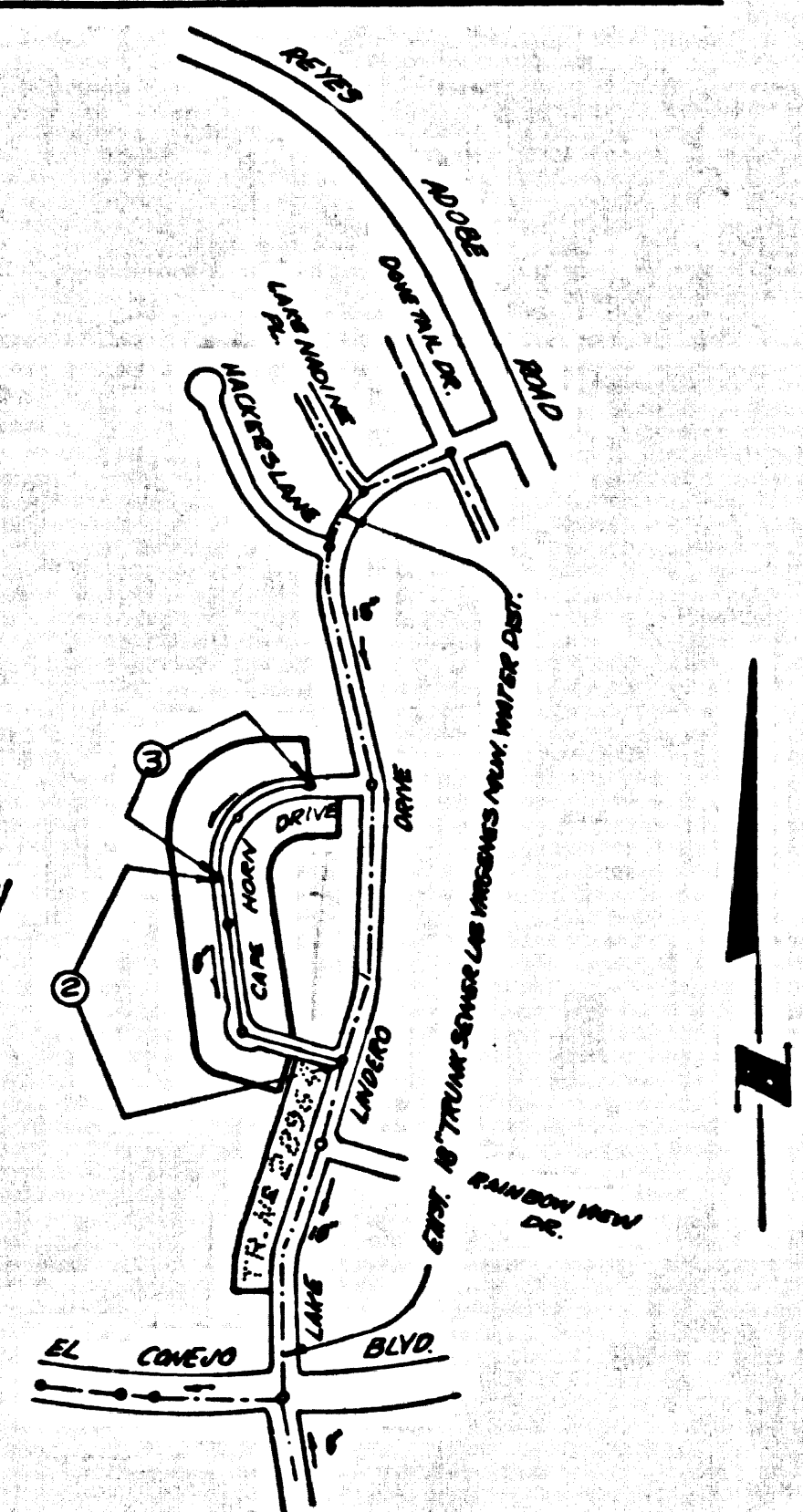


B.M. BY 7554 ELEV. 928.231
 RD. 847 708 EFF. S. CATCH BASIN ON SE. COR.
 ROYAL RD. OVERCROSSING & WESTBOUND ON-OFF
 RAMP VENTURA HWY. 40 FT. S. 1/2 SEC. 1 & INT.
 MALIBU QUAD. 19 55

INDEX MAP
 PARCEL MAP No. 2281
 SCALE 1" = 600'



THE ACCURACY OF THE LOCATION OF OR THE EXISTENCE OR NON-EXISTENCE OF ANY UTILITY PIPE OR STRUCTURE WITHIN THE LIMITS OF THIS PROJECT DOES NOT CONSTITUTE RESPONSIBILITY BY THE ENGINEER.

THE FOLLOWING COUNTY ENGINEER STANDARD PLANS APPLY TO THIS PROJECT:

LEGEND	S-1
MINIMUM PUBLIC SAFETY REQUIREMENTS	S-2
BRICK MANHOLE	S-3
NON-REINFORCED PRECAST CONCRETE MANHOLE	S-36
MANHOLE FRAME AND COVER	S-35
MANHOLE STEP	S-17
BEDDING FOR SEWER PIPE	S-21
CRADLING AND ENCASEMENT	S-23
WYE OR TEE SUPPORT	S-26
ALLOWABLE TRENCH WIDTH	S-33

REVISION: 8-30-71
 REVISED LEGAL FROM TRACT
 No. 27439 TO PAR. MAP No. 2281
 AND ADDED 2.76' OF M.L. AND 13.11' S.
 APPROVED: *[Signature]*
 OFFICE OF COUNTY ENGINEER

CALABASAS BLDG. DIST. NO. 9.I

- NOTES:
1. PROFILE STAKES ON THE PROPERTY LINE OR PROPERTY LINES PRODUCED AT RIGHT ANGLES TO THE SEWER LINE AT THE CENTER LINE OF EACH MANHOLE.
 2. NO REPRESENTATIVE OF THE COUNTY ENGINEER WILL SURVEY OR LAY OUT ANY PORTION OF THE WORK.
 3. THE PRIVATE ENGINEER SHALL FURNISH THE COUNTY ENGINEER WITH GRADE SHEETS AND STATIONING FOR ALL HOUSE LATERALS AND "T" OR "Y" BRANCHES SHALL SHOW STAKES FOR THEM AT THREE PROPER LOCATIONS WITH STATIONING PLAINLY MARKED. ALL HOUSE LATERALS SHALL BE CONSTRUCTED AT RIGHT ANGLES TO THE MAIN LINE SEWER 1' CENT AS SHOWN ON THE PLANS. HOUSE LATERALS FROM CHIMNEYS SHALL NOT HAVE AN ANGLE OF LESS THAN 45° WITH THE MAIN LINE SEWER. ANY CHANGE IN ALIGNMENT SHALL BE INDICATED IN WRITING BY THE PRIVATE ENGINEER.
 4. THE PRIVATE ENGINEER SHALL FURNISH THE HOUSE LATERAL DEPTH AT THE PROPERTY LINE BELOW THE TOP OF CURB ELEVATION FOR EACH HOUSE LATERAL ON THE GRADE SHEET.
 5. NO REVISIONS SHALL BE MADE IN THESE PLANS WITHOUT THE APPROVAL OF THE COUNTY ENGINEER.
 6. THE CONTRACTOR SHALL NOTIFY THE CONSTRUCTION DIVISION BY TELEPHONE, MADISON 4-2427, EXT. 81527, AT LEAST TWENTY-FOUR HOURS BEFORE STARTING ANY WORK UNDER THIS CONTRACT.
 7. ALL STRUCTURES SHALL BE EITHER BRICK MANHOLES PER S-3 OR PRECAST CONCRETE MANHOLES PER S-36 EXCEPT AS NOTED.
 8. "T" OR "Y" BRANCHES MAY BE USED FOR CONNECTIONS TO MAINLINE SEWERS EXCEPT AS NOTED.
 9. MANHOLE TOPS IN UNIMPROVED RIGHTS-OF-WAY TO BE SIX INCHES ABOVE FINISHED GRADE.
 10. USE EXTRA STRENGTH PIPE. ALL PIPE IS STANDARD DEPTH EXCEPT AS NOTED.
 11. VITRIFIED CLAY PIPE JOINTS SHALL BE TYPE "O", "F", OR "D" PER STD. SPEC. SEC. 208-2.
 12. IF A POWER POLE IS WITHIN THREE FEET OF THE SEWER, THE SEWER SHALL BE ENCASED, PER S-25, TWO FEET ON EACH SIDE FROM THE POINT OF INTERFERENCE.
 13. IF DURING THE COURSE OF CONSTRUCTION IT IS DETERMINED THAT THERE IS LESS THAN FOUR FEET OF COVER OVER THE TOP OF A MAIN LINE OR HOUSE LATERAL V.C.P. SEWER WHICH IS NOT INDICATED ON THE PLANS, THE PIPE SHALL BE ENCASED PER S-25, UNLESS OTHERWISE APPROVED BY THE COUNTY ENGINEER.
 14. HOUSE LATERALS TO BE CONSTRUCTED WITH INVERTS AT PROPERTY LINE & FEET BELOW CURB GRADE EXCEPT AS NOTED.
 15. RESURFACE ALL TRENCHES WITHIN PAVED AREAS TO MEET L.A. COUNTY ROAD DEPT. OR CALIFORNIA STATE HIGHWAY REQUIREMENTS IN ACCORDANCE WITH PERMITS.
 16. SEWERS TO BE AIR PRESSURE TESTED PER SECTION 306-2.3.7.C OF THE SPECIAL PROVISIONS.
 17. REFER TO SECTION 7-B.6.1 OF THE STANDARD SPEC'S REGARDING SAFETY ORDERS.
 18. SPECIAL INSTRUCTIONS: PARAS.
 19. MANHOLE FRAMES AND COVERS SHALL BE CAST-IRON OR SHALL BE APPROVED BY THE NATIONAL OR FINISHED GRADES AND SHOULDER WIDTHS ON THE GRADE SHEET APPROVED FOR THIS TRACT BY THE SURVEYOR AND SAFETY DIVISION.
 20. MANHOLE FRAMES AND COVERS SHALL BE CAST-IRON OR SHALL BE APPROVED BY THE NATIONAL OR FINISHED GRADES AND SHOULDER WIDTHS ON THE GRADE SHEET APPROVED FOR THIS TRACT BY THE SURVEYOR AND SAFETY DIVISION.
 21. ALL JOINTS BETWEEN CAST IRON PIPE AND VITRIFIED CLAY PIPE SHALL BE MADE WITH A RUBBER SLEEVE JOINT, TYPE "C" OR "D", (WITH BUSHING IF NECESSARY) PER STANDARD SPECIFICATIONS, SECTION 208-2.

COLLECT CHARGES
 AS INDICATED

PROFILE ALIGNMENT AND GRADE OF
 SANITARY SEWERS P.C. 8095
 TO BE CONSTRUCTED IN PAGE 1

PARCEL MAP No. 2281
 PRIVATE CONTRACT NO. 8095

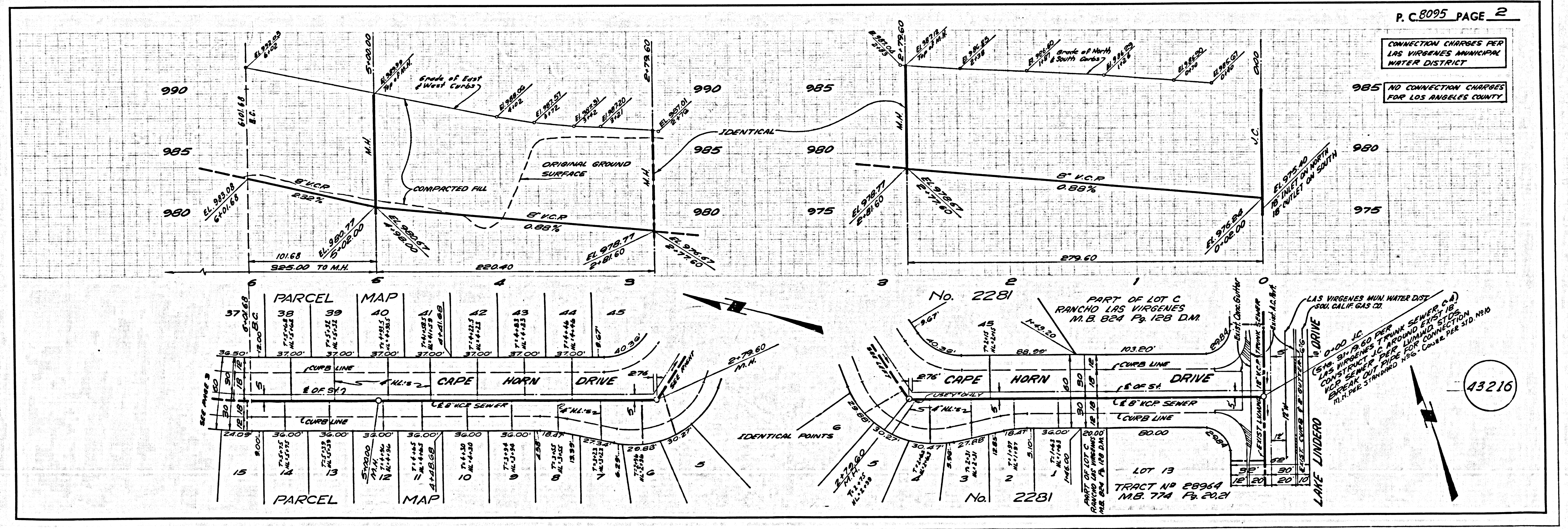
W.S. 93
 SHEETS: 3 PAGES
 SCALE: VERT. 1" = 4'
 HORIZ. 1" = 40'
 PREPARED IN THE OFFICES OF
 MCINTIRE & QUIROS INC. 43215
 670 MONTEREY PASS ROAD, MONTEREY PARK, CALIF.
 REG. C. E. NO. 15810

NOTE:
 GRADES TO WHICH THIS IMPROVEMENT IS TO BE CONSTRUCTED ARE SHOWN ON PLANS AND PROFILES. GRADE POINTS FOR TOP OF CURB, CENTER LINE OF STREETS OR CENTER LINE OF ALLEYS ARE SHOWN BY CIRCLES ON PROFILES AT ALL POINTS BETWEEN DESIGNATED POINTS. THE GRADE SHALL BE ESTABLISHED SO AS TO CONFORM TO A STRAIGHT LINE DRAWN BETWEEN SAID DESIGNATED POINTS. ELEVATIONS ARE IN FEET ABOVE U.S.C. & G.S. SEA LEVEL DATUM OF 1929.
 THE SEWERING AND THE DATA HEREON ARE HEREBY MADE A PART OF THE SPECIFICATIONS.
 WORK SHALL BE CONSTRUCTED ACCORDING TO THE STANDARD SPECIFICATIONS FOR PUBLIC WORKS CONSTRUCTION (1970) EDITED BY THE COUNTY ENGINEER. SPECIAL PROVISIONS FOR THE CONSTRUCTION OF SANITARY SEWERS DATED APRIL 1, 1969, AS REVISED, AND SHALL BE PROSECUTED ONLY IN THE PRESENCE OF THE COUNTY ENGINEER.
 BEFORE WORK CAN BE STARTED, THE CONTRACTOR MUST OBTAIN A PERMIT TO OCCUPY STREETS FROM THE L.A. COUNTY ROAD DEPT., DISTRICT OFFICE NO. 43215 AND PAY A FEE TO THE COUNTY ENGINEER, ROOM 330, COUNTY ENGINEERING BLDG., 100 WEST 51ST STREET OR CONSTRUCTION INSPECTION AND RECORD PLANS.
 APPROVAL OF THIS PLAN BY THE COUNTY OF LOS ANGELES DOES NOT CONSTITUTE A REPRESENTATION AS TO THE ACCURACY OF THE LOCATION OR THE EXISTENCE OR NON-EXISTENCE OF ANY UNDERGROUND UTILITY PIPE, OR STRUCTURE WITHIN THE LIMITS OF THIS PROJECT. THIS NOTE APPLIES TO ALL PAGES.
 IF WORK IS TO BE DONE IN A STATE HIGHWAY, A PERMIT MUST BE OBTAINED FROM THE STATE OF CALIFORNIA, DIVISION OF HIGHWAYS, 120 SOUTH SPRING STREET, LOS ANGELES, CALIFORNIA.

COUNTY OF LOS ANGELES, CALIFORNIA
 LAS VIRGENES MUNICIPAL WATER DISTRICT
 JOHN A. LAMBE, COUNTY ENGINEER
 APPROVED BY: *[Signature]* REGIONAL ENGINEER
 APPROVED BY: *[Signature]* GENERAL WORK-CHIEF ENGINEER

CHECKED BY: *[Signature]*
 REG. C.E. NO. 9166

J. N. 0250.02

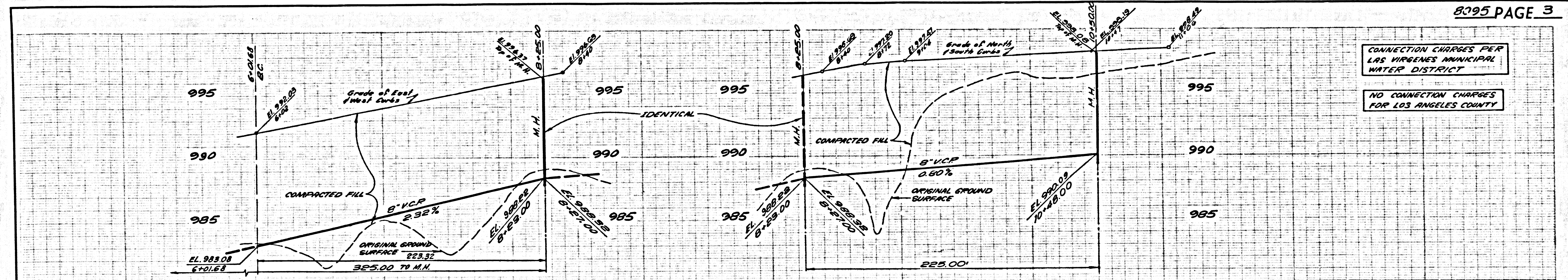


P. C. 8095 PAGE 2

CONNECTION CHARGES PER
 LAS VIRGENES MUNICIPAL
 WATER DISTRICT

985 NO CONNECTION CHARGES
 FOR LOS ANGELES COUNTY

43216



CONNECTION CHARGES PER
LAS VIRGENES MUNICIPAL
WATER DISTRICT

NO CONNECTION CHARGES
FOR LOS ANGELES COUNTY

