

B.M. BY 371 ELEV. 37.301  
 1 FT. N.W. COR. S.P.R. SIGNAL SWITCH BOX NO. 4972,  
 35' S. OF DEL AMO BLVD. AND 35' E. OF E. OF MAIN  
 LINE OF S.P.R. 2.

GARDENA QUAD. 1965

County Sanitation Districts shall be notified prior to the following so that required inspection can be made (These)

- (1) Commencement of construction of manhole on District trunk sewer.
- (2) Breaking into existing manhole on District trunk sewer.
- (3) Core drilling District trunk sewer.
- (4) Construction of house connections to District trunk sewer.
- (5) Acceptance of the project.

### LENNOX BLDG. DIST. NO. 7

- NOTES:
1. PROFILE STAKES ON THE PROPERTY LINE OR PROPERTY LINES PRODUCED AT RIGHT ANGLES TO THE SEWER LINE AT THE CENTER LINE OF EACH MANHOLE.
  2. NO REPRESENTATIVE OF THE COUNTY ENGINEER WILL SURVEY OR LAY OUT ANY PORTION OF THE WORK.
  3. THE PRIVATE ENGINEER SHALL FURNISH THE COUNTY ENGINEER WITH GRADE SHEETS AND STATIONING FOR ALL HOUSE LATERALS AND "T" OR "T" BRANCHES AND SHALL PROVIDE STAKES FOR THEM AT THEIR PROPER LOCATIONS WITH STATIONING PLAINLY MARKED. ALL HOUSE LATERALS SHALL BE CONSTRUCTED IN A STRAIGHT ALIGNMENT AT RIGHT ANGLES FROM THE MAIN LINE SEWER EXCEPT AS SHOWN ON THE PLANS. HOUSE LATERALS FROM CHIMNEYS SHALL NOT HAVE AN ANGLE OF LESS THAN 45° WITH THE MAIN LINE SEWER. ANY CHANGE IN ALIGNMENT SHALL BE REQUESTED IN WRITING BY THE PRIVATE ENGINEER.
  4. THE PRIVATE ENGINEER SHALL FURNISH THE HOUSE LATERAL DEPTH AT THE PROPERTY LINE BELOW THE TOP OF CURB ELEVATION FOR EACH HOUSE LATERAL ON THE GRADE SHEET.
  5. NO REVISIONS SHALL BE MADE IN THESE PLANS WITHOUT THE APPROVAL OF THE COUNTY ENGINEER.
  6. THE CONTRACTOR SHALL NOTIFY THE CONSTRUCTION DIVISION BY TELEPHONE, MADISON 9-47, EXT. 8155, AT LEAST TWENTY-FOUR HOURS BEFORE STARTING ANY WORK UNDER THE CONTRACT.
  7. ALL STRUCTURES SHALL BE EITHER BRICK MANHOLES PER S. & O. PRECAST CONCRETE MANHOLES PER S. & O. S. 4, EXCEPT AS NOTED.
  8. USE STANDARD MANHOLE FRAMES AND COVERS, S. & O. EXCEPT AS NOTED.
  9. MANHOLE TOPS IN UNIMPROVED RIGHTS-OF-WAY TO BE SIX INCHES ABOVE FINISHED GRADE.
  10. USE EXTRA STRENGTH PIPE. ALL PIPE IS STANDARD DEPTH EXCEPT AS NOTED.
  11. VITRIFIED CLAY PIPE JOINTS SHALL BE TYPE "D", "C" OR "B" PER STD. SPEC. SEC. 208-2.
  12. IF A POWER POLE IS WITHIN THREE FEET OF THE SEWER, THE SEWER SHALL BE ENCASED, PER S. & O. TWO FEET ON EACH SIDE FROM THE POINT OF INTERFERENCE.
  13. IF DURING THE COURSE OF CONSTRUCTION IT IS DETERMINED THAT THERE IS LESS THAN FOUR FEET OF COVER OVER THE TOP OF A MAIN LINE OR HOUSE LATERAL V.C.P. SEWER WHICH IS NOT INDICATED ON THE PLANS, THE PIPE SHALL BE COVERED PER S. & O. UNLESS OTHERWISE APPROVED BY THE COUNTY ENGINEER.
  14. HOUSE LATERALS TO BE CONSTRUCTED WITH INVERTS AT PROPERTY LINE 4 FEET BELOW CURB GRADE EXCEPT AS NOTED.
  15. REINFORCE ALL TRENCHES WITHIN PAVED AREAS TO MEET L.A. COUNTY ROAD DEPT. OR CALIFORNIA STATE HIGHWAY REQUIREMENTS IN ACCORDANCE WITH PERMITS.
  16. SEWERS TO BE TESTED FOR LEAKAGE PER SECTION 304-2.3 UNIFORM STANDARD SPECIFICATIONS.
  17. REFER TO SECTION 7.0.4.1 OF THE STANDARD SPECIFICATIONS, REGARDING SAFETY ORDERS.
  18. SPECIAL BACKFILL IN DESIGNATED AREAS:  
 (a) BACKFILL TRENCH AND REPLACE OTHER EARTH REMOVED SO AS TO ACHIEVE THE NATURAL OR FINISHED GRADES AND SLOPES SHOWN ON THE GRADING PLAN APPROVED FOR THIS TRACT BY THE BUILDING AND SAFETY DIVISION.  
 (b) ALL BACKFILL AND EARTH REPLACED SHALL BE COMPACTED TO A MINIMUM OF 90% OF MAXIMUM DENSITY PER A.S.T.M. STAND. AND METHOD OF TEST 998-S-17 AS MODIFIED. ACCEPTABLE CERTIFICATION OF SUCH COMPACTION SHALL BE SUBMITTED TO THE CONSTRUCTION DIVISION.  
 (c) ROAD GRADING TO BE COMPLETED BEFORE OTHER CONSTRUCTION IS STARTED. THE FOLLOWING COUNTY ENGINEER STD. SHALL APPLY TO THIS PROJECT:

**COLLECT CHARGES AS INDICATED**

PROFILE ALIGNMENT AND GRADE OF  
**SANITARY SEWERS** P.C. 8099  
 TO BE CONSTRUCTED IN PAGE 1

**DEL AMO BOULEVARD**  
**PARCEL MAP NO. 567**  
**PRIVATE CONTRACT NO. 8099**

W.S. 26  
 3 SHEETS, 6 PAGES

SCALE: VERT. 1"=4'  
 HORIZ. 1"=40'  
 MAY 1968  
 PREPARED IN THE OFFICES OF  
**VOORHEIS-TRINDLE-NELSON, INC.**  
 13754 BEACH BOULEVARD  
 WESTMINSTER, CALIFORNIA  
 By *James C. Williams*  
 REG. C. E. NO. 14335

40997

FOR LEGEND SEE PLAN NO. S-1

NOTE:  
 GRADES TO WHICH THIS IMPROVEMENT IS TO BE CONSTRUCTED ARE SHOWN ON PLANS AND PROFILES. GRADE POINTS FOR TOP OF CURBS, CENTER LINE OF STREETS, OR CENTER LINE OF ALLEYS ARE SHOWN BY CIRCLES ON PROFILES. AT ALL POINTS BETWEEN DESIGNATED POINTS THE GRADE SHALL BE ESTABLISHED SO AS TO CONFORM TO A STRAIGHT LINE DRAWN BETWEEN SAID DESIGNATED POINTS. ELEVATIONS ARE IN FEET ABOVE U.S.C. & G.S. SEA LEVEL DATUM OF 1929. ALL WORK SHALL BE CONSTRUCTED ACCORDING TO THE UNIFORM STANDARD SPECIFICATIONS FOR PUBLIC WORKS CONSTRUCTION AND COUNTY ENGINEER SPECIAL PROVISIONS DATED FEB. 15, 1968. AS REVISED, AND SHALL BE PROSECUTED ONLY IN THE PRESENCE OF THE COUNTY ENGINEER.  
 BEFORE WORK CAN BE STARTED, THE CONTRACTOR MUST OBTAIN A PERMIT TO EXCAVATE IN COUNTY STREETS FROM THE L.A. COUNTY ROAD DEPT., DISTRICT OFFICE NO. 1000 WEST SECOND STREET, LOS ANGELES, CALIFORNIA. APPROVAL OF THIS PLAN BY THE COUNTY OF LOS ANGELES DOES NOT CONSTITUTE A REPRESENTATION AS TO THE ACCURACY OF THE LOCATION OF OR THE EXISTENCE OR NON-EXISTENCE OF ANY UNDERGROUND UTILITY PIPE, OR STRUCTURE WITHIN THE LIMITS OF THIS PROJECT. THIS NOTE APPLIES TO ALL PAGES.  
 IF MORE IS TO BE DONE IN A STATE HIGHWAY, A PERMIT MUST BE OBTAINED FROM THE STATE OF CALIFORNIA, DIVISION OF HIGHWAYS, 120 SOUTH SPRING STREET, LOS ANGELES, CALIFORNIA.

COUNTY OF LOS ANGELES, CALIFORNIA  
 JOHN A. LAMBE, COUNTY ENGINEER J. D. PARKHURST, CHIEF ENGINEER

APPROVED BY *Alfonso S. Lopez* APPROVED BY *John A. Lamb*  
 REGIONAL ENGINEER OFFICE ENGINEER

CHECKED BY *Edmond Valdez* 5-8-68  
 REG. C.E. NO. 10651

J.N. 0250.02

**REVISION NO. 2.**  
 REVISED GRADE & ADDED VERTICAL CURVE ON 15" V.C.P. SEWER BETWEEN STA. 13+13.00 & 14+18.00, TO CLEAR 16" OIL LINE, PAGE 3.  
 By *Alfonso S. Lopez* 3/12/69  
 OFFICE OF COUNTY ENGINEER DATE

**REVISION NO. 1**  
 REVISED M.H. LOCATION BETWEEN STA. 33+00 & 35+70, ADJUSTED LENGTHS OF 15" V.C.P. & 6" V.C.P. SEWERS, FOR FUT. DOUGLAS AVE. PAGE 5.  
 By *Alfonso S. Lopez* 12-10-68  
 OFFICE OF COUNTY ENGINEER DATE

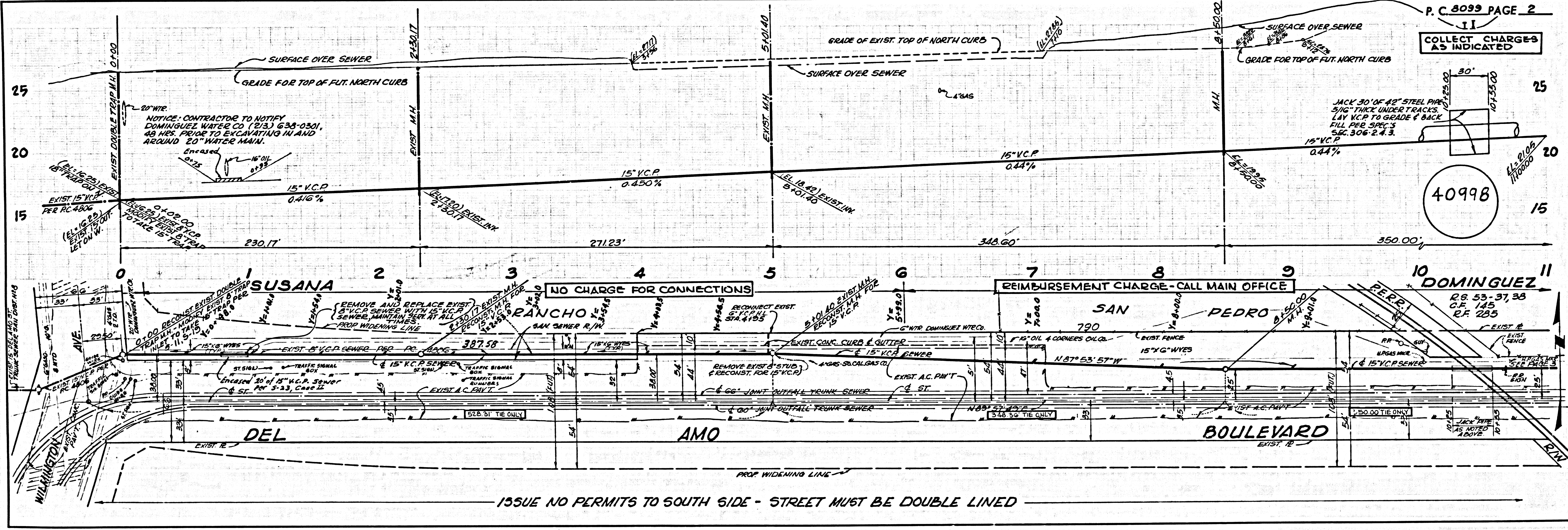
**REVISION NO. 3**  
 REVISED STREET GRADES & TOP OF MANHOLES, ON PAGES 2, 4, 5 & 9.  
 By *Alfonso S. Lopez* 3/12/70  
 OFFICE OF COUNTY ENGINEER DATE

### INDEX MAP

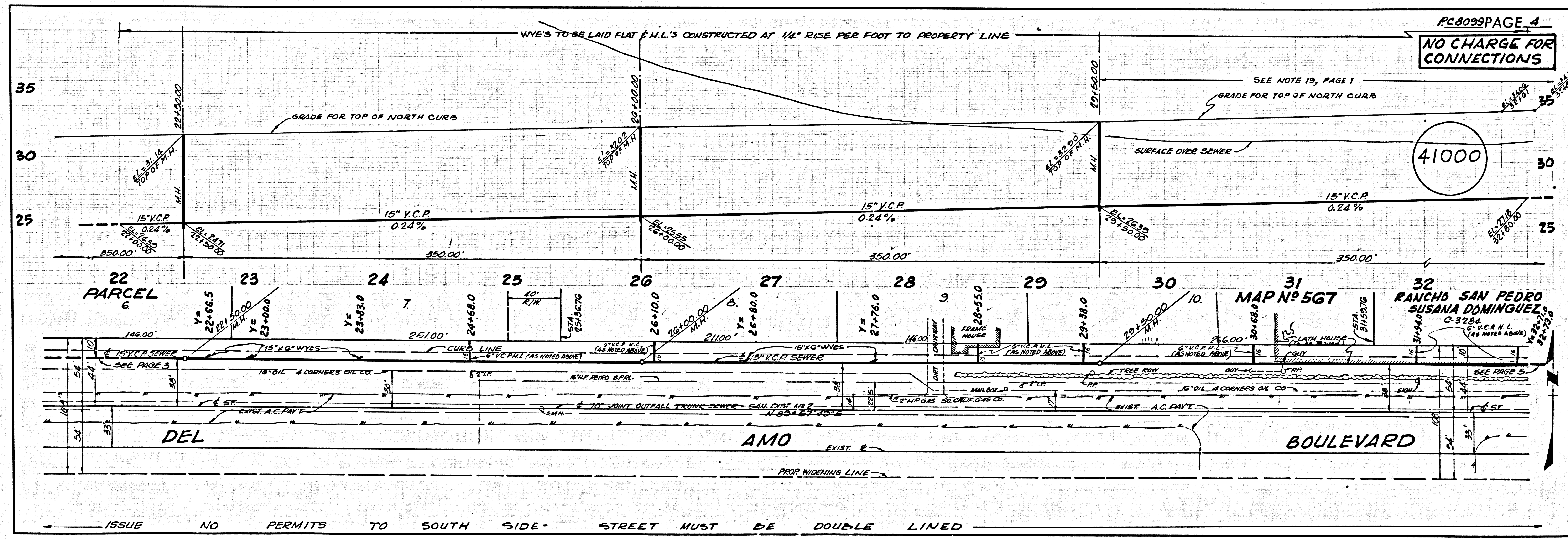
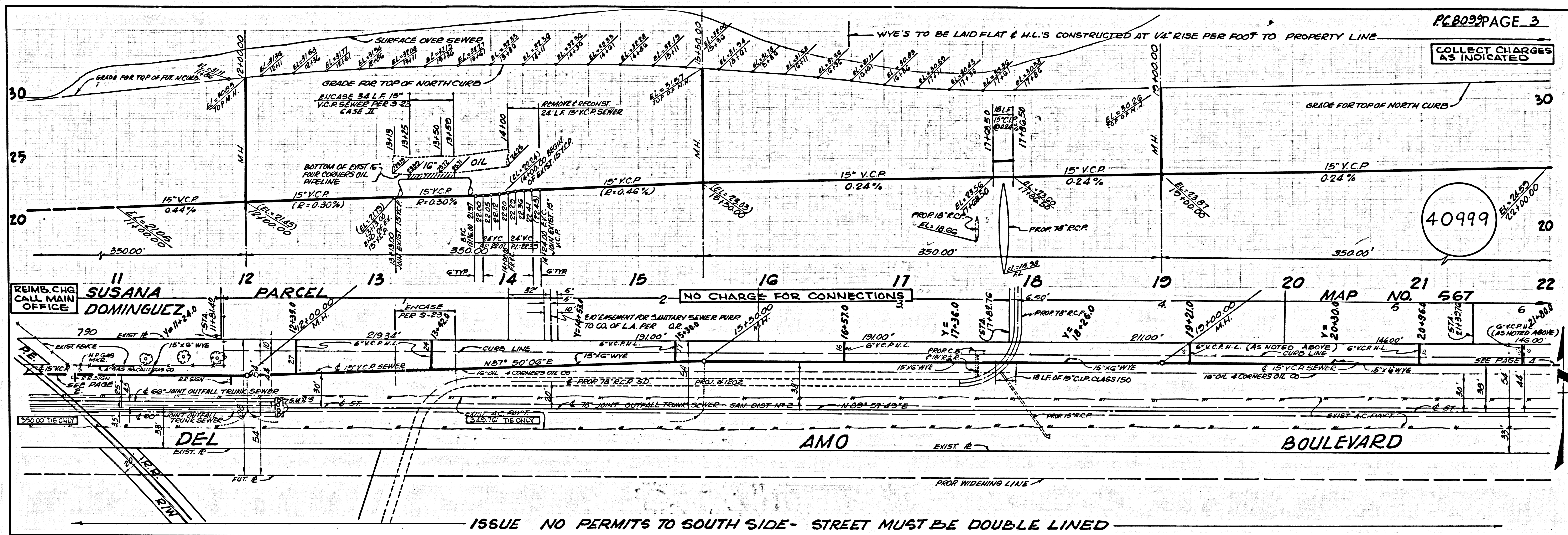
SCALE: 1"=400'  
 P.C. 8099

NOTE: FIGURES IN CIRCLES INDICATE PAGE NUMBERS

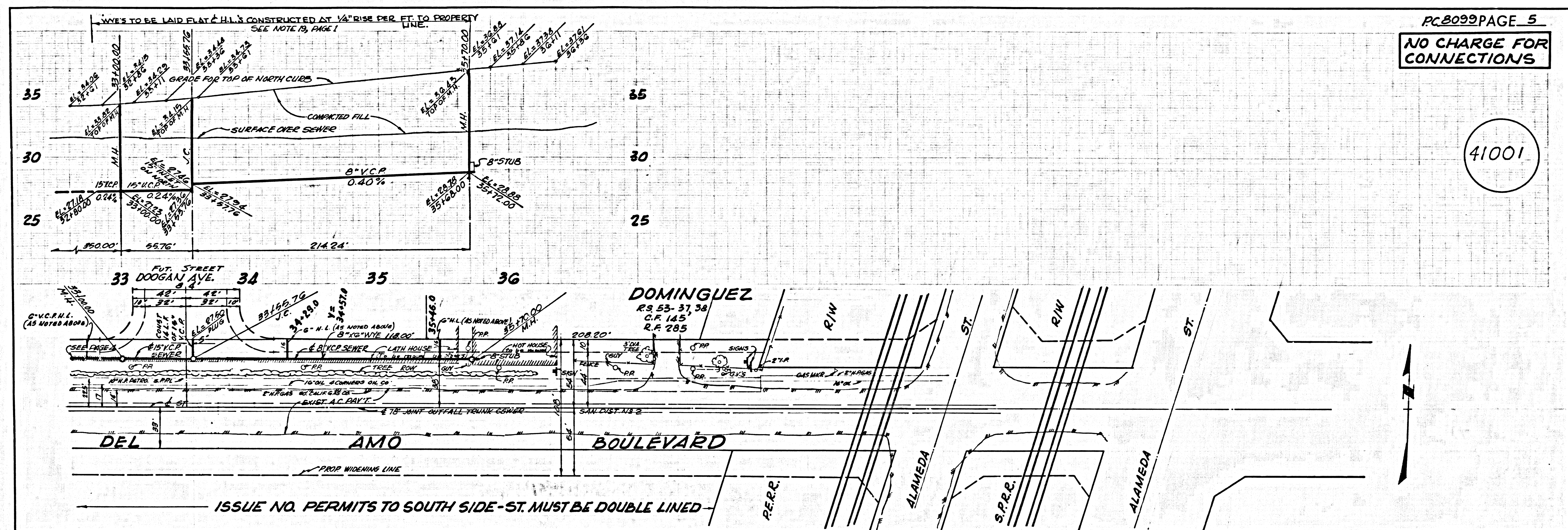
NO CONNECTIONS FOR THE DISPOSAL OF INDUSTRIAL WASTES SHALL BE DRAWN TO SEWERS SHOWN ON THESE DRAWINGS WITHOUT WRITTEN PERMISSION FROM THE CHIEF ENGINEER AND GENERAL MANAGERS OF THE COUNTY SANITATION DISTRICTS.





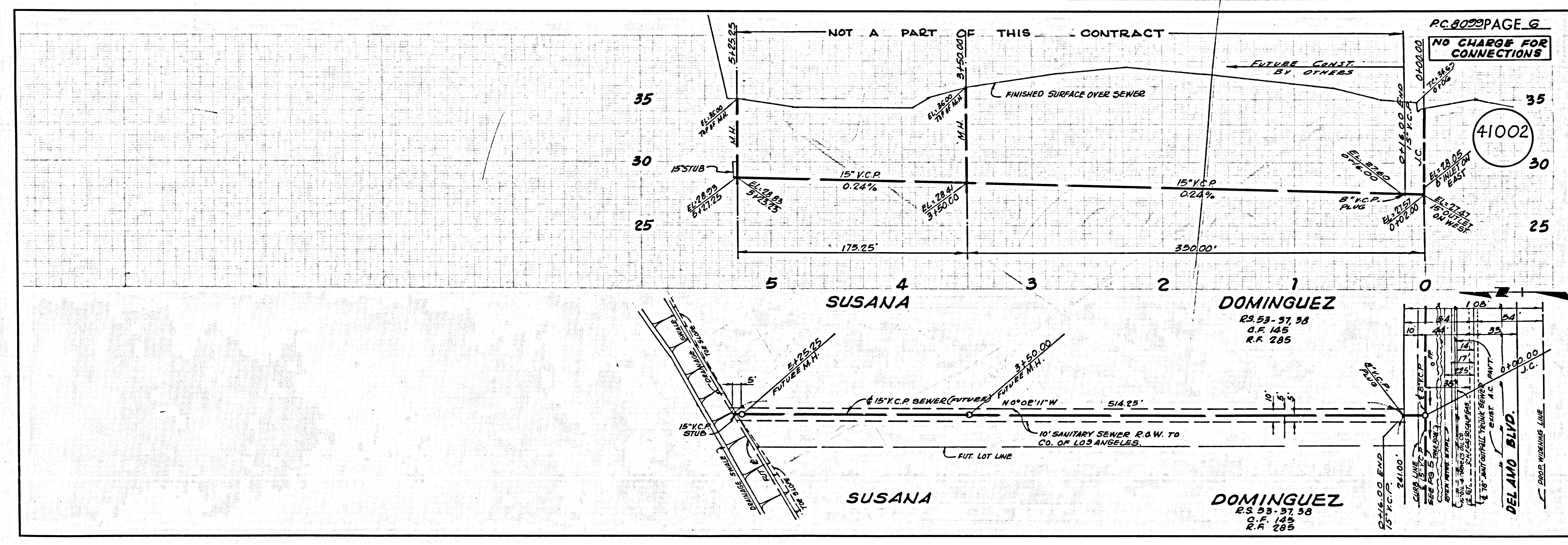






PC 8099 PAGE 5  
NO CHARGE FOR CONNECTIONS

41001



PC 8099 PAGE 6  
NO CHARGE FOR CONNECTIONS

41002