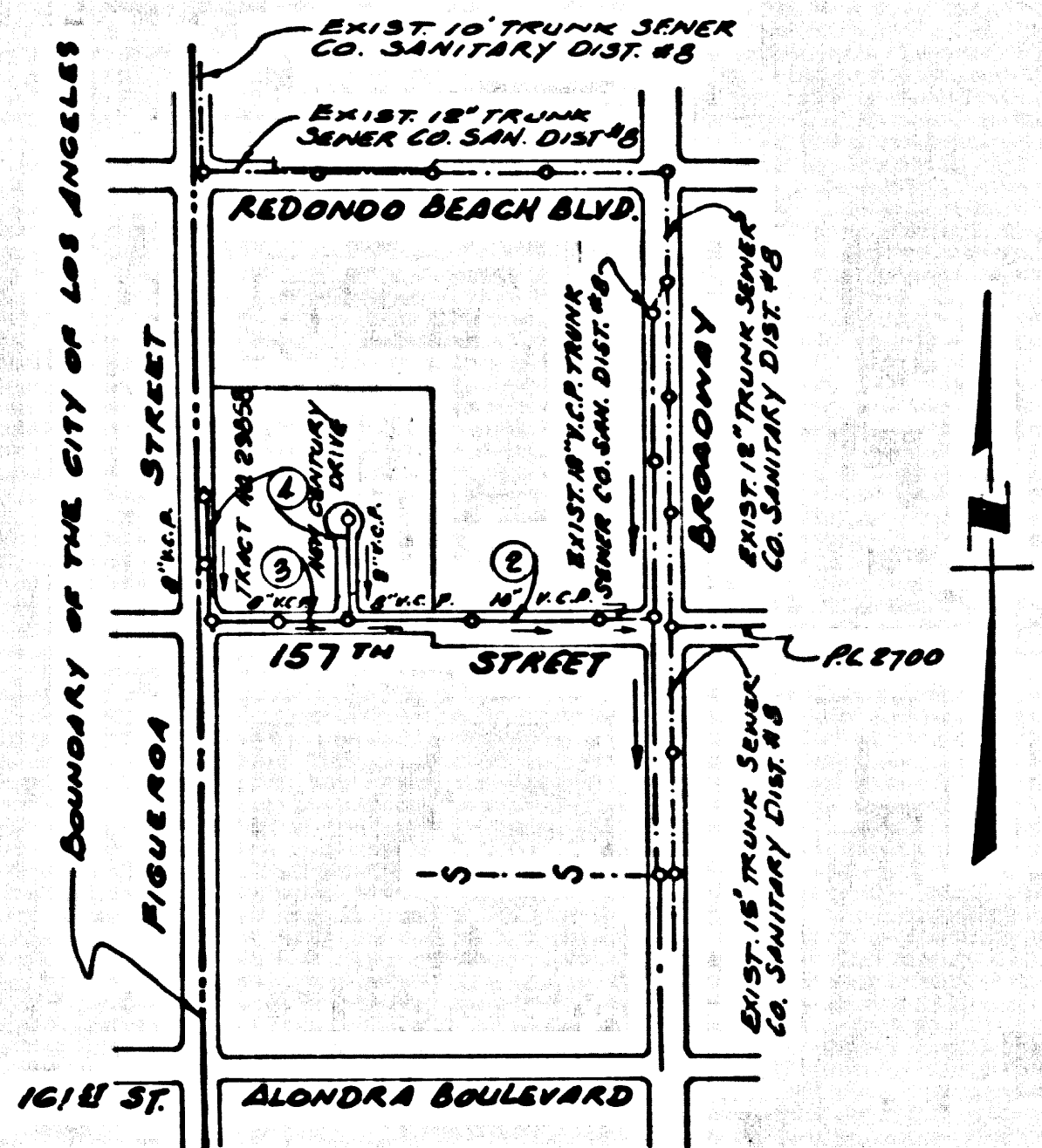


B.M. BY 7130 ELEV. 41.385
 R.O.S.M. LYON & CURS N.C.C. 9 HE
 COX BROADWAY 4 1/2" 5' 40" N 9 40'S
 APPROX. 1/2" MARKED (S.M.)
 GARDENA QUAD. 19 65



INDEX MAP
 R.C. 8100
 SCALE: 1"=600'

County Sanitation Districts shall be notified prior to the following so that required inspection can be made (Those)

- (1) Commencement of construction of manhole on District trunk sewer.
- (2) Breaking into existing manhole on District trunk sewer.
- (3) Core drilling District trunk sewer.
- (4) Construction of house connections to District trunk sewer.
- (5) Acceptance of the project.

NO CONNECTIONS FOR THE DISPOSAL OF INDUSTRIAL WASTES SHALL BE MADE TO SEWERS SHOWN ON THESE DRAWINGS WITHOUT WRITTEN PERMISSION FROM THE CHIEF ENGINEER AND GENERAL MANAGER OF THE COUNTY SANITATION DISTRICTS.

LENNOX BLDG. DIST. NO. 7

PROFILE, ALIGNMENT AND GRADE OF P.C. 8100
 SANITARY SEWERS PAGE 1
 TO BE CONSTRUCTED IN

TRACT NO. 29858
 PRIVATE CONTRACT NO. 8100

W.S. 26
 2 SHEETS, 4 PAGES

SCALE: VERT. 1"=4' HORIZ. 1"=40'
 MAY, 1968
 PREPARED IN THE OFFICES OF
J.H. EDWARDS & CO.
 1030 CRENSHAW PLACE
 LOS ANGELES, CALIFORNIA 90008
 REG. C. E. NO. 4432

40832

- NOTES:
1. PROVIDE STAKES ON THE PROPERTY LINE OR PROPERTY LINES PRODUCED AT RIGHT ANGLES TO THE SEWER LINE AT THE CENTER LINE OF EACH MANHOLE.
 2. NO REPRESENTATIVE OF THE COUNTY ENGINEER WILL SURVEY OR LAY OUT ANY PORTION OF THE WORK.
 3. THE PRIVATE ENGINEER SHALL FURNISH THE COUNTY ENGINEER WITH GRADE SHEETS AND STATIONING FOR ALL HOUSE LATERALS. ALL BRANCHES AND SHALL PROVIDE STAKES FOR THEM AT THESE PROPER LOCATIONS WITH STATIONING PLAINLY MARKED. ALL HOUSE LATERALS SHALL BE CONSTRUCTED IN A STRAIGHT ALIGNMENT AT RIGHT ANGLES FROM THE MAIN LINE SEWER EXCEPT AS SHOWN ON THE PLANS. HOUSE LATERALS FROM CHIMNEYS SHALL NOT HAVE AN ANGLE OF LESS THAN 45° WITH THE MAIN LINE SEWER. ANY CHANGE IN ALIGNMENT SHALL BE REQUESTED IN WRITING BY THE PRIVATE ENGINEER.
 4. THE PRIVATE ENGINEER SHALL FURNISH THE HOUSE LATERAL DEPTH AT THE PROPERTY LINE BELOW THE TOP OF CURB ELEVATION FOR EACH HOUSE LATERAL ON THE GRADE SHEET.
 5. NO REVISIONS SHALL BE MADE IN THESE PLANS WITHOUT THE APPROVAL OF THE COUNTY ENGINEER.
 6. THE CONTRACTOR SHALL NOTIFY THE CONSTRUCTION DIVISION BY TELEPHONE, MADISON 9-4747, EXT. 81381, AT LEAST TWENTY-FOUR HOURS BEFORE STARTING ANY WORK UNDER THIS CONTRACT.
 7. ALL STRUCTURES SHALL BE EITHER BRICK MANHOLES PER S-3 OR PRECAST CONCRETE MANHOLES PER S-5 OR S-6, EXCEPT AS NOTED.
 8. 1" BRANCHES TO BE USED FOR CONNECTIONS TO MAINLINE SEWERS EXCEPT AS NOTED.
 9. MANHOLE TOPS IN UNIMPROVED RIGHTS-OF-WAY TO BE SIX INCHES ABOVE FINISHED GRADE.
 10. USE EXTRA STRENGTH PIPE, ALL PIPE IS STANDARD DEPTH EXCEPT AS NOTED.
 11. VITRIFIED CLAY PIPE JOINTS SHALL BE TYPE "ST" P, OR "M" PER S-25 SPEC. SEC. 800-2.
 12. IF A POWER POLE IS WITHIN THREE FEET OF THE SEWER, THE SEWER SHALL BE ENCASED, PER S-25, TWO FEET ON EACH SIDE FROM THE POINT OF INTERFERENCE.
 13. IF DURING THE COURSE OF CONSTRUCTION IT IS DETERMINED THAT THERE IS LESS THAN FOUR FEET OF COVER OVER THE TOP OF A MAIN LINE OR HOUSE LATERAL V.C.P. SEWER WHICH IS NOT INDICATED ON THE PLANS, THE PIPE SHALL BE ENCASED PER S-25, UNLESS OTHERWISE APPROVED BY THE COUNTY ENGINEER.
 14. HOUSE LATERALS TO BE CONSTRUCTED WITH INVERTS AT PROPERTY LINE 4 FEET BELOW CURB GRADE EXCEPT AS NOTED.
 15. RESURFACE ALL TRENCHES WITHIN PAVED AREAS TO MEET L.A. COUNTY ROAD DEPT. OR CALIFORNIA STATE HIGHWAY REQUIREMENTS IN ACCORDANCE WITH PERMITS.
 16. SEWERS TO BE TESTED FOR LEAKAGE PER SECTION 806-102 STANDARD SPECIFICATIONS.
 17. SEWER TRENCHES TO BE TESTED FOR LEAKAGE PER SECTION 806-102 STANDARD SPECIFICATIONS, REGARDING SAFETY ORDERS.

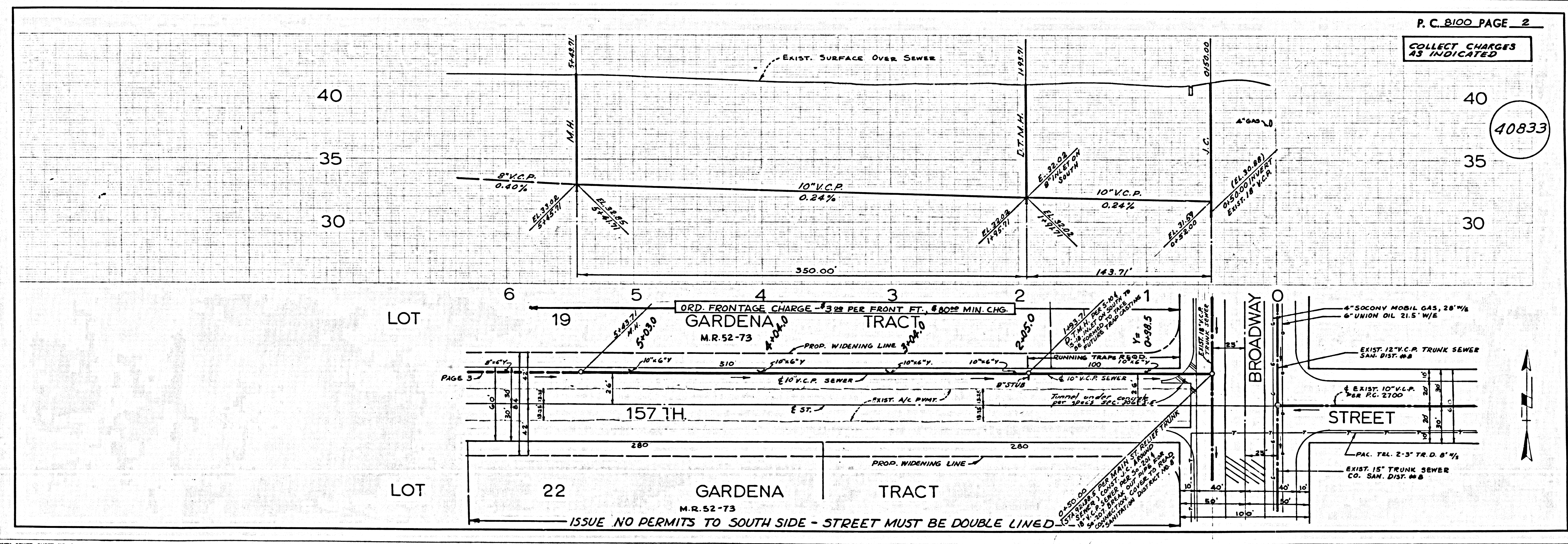
THE FOLLOWING COUNTY ENGINEER STANDARD PLANS APPLY TO THIS PROJECT:

LEGEND	3-1
MINIMUM EXCAVATION SAFETY REQUIREMENTS	3-2
BRICK MANHOLE	3-3
MANHOLE PRECAST CONCRETE MANHOLE	3-4
MANHOLE PRECAST CONCRETE MANHOLE	3-5
MANHOLE FRAME AND COVER	3-16
MANHOLE COVER	3-17
REDONDO PARK SEWER PIPE	3-18
ORANGEWOOD AND GARDENA	3-19
NYS AND TEE SURFACED	3-20
ALLOWABLE TRENCH WIDTH	3-21

NOTICE TO CONTRACTOR
 The existence and location of any underground utility lines or structures shown on these plans are shown by a search of the available records to the best of my knowledge there are no existing utility lines or structures shown on these plans. The contractor is required to take due precautionary measures to protect the utility lines shown and any other lines not of record or not shown on these plans.

COLLECT CHARGES AS INDICATED

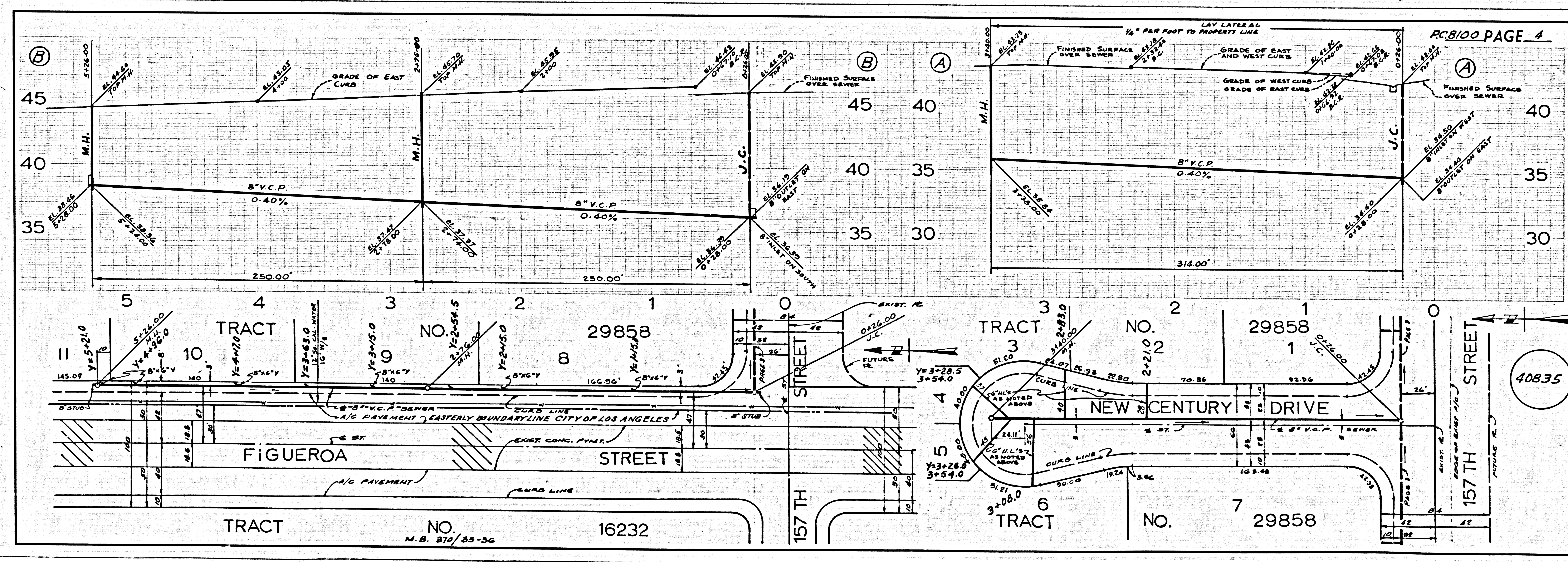
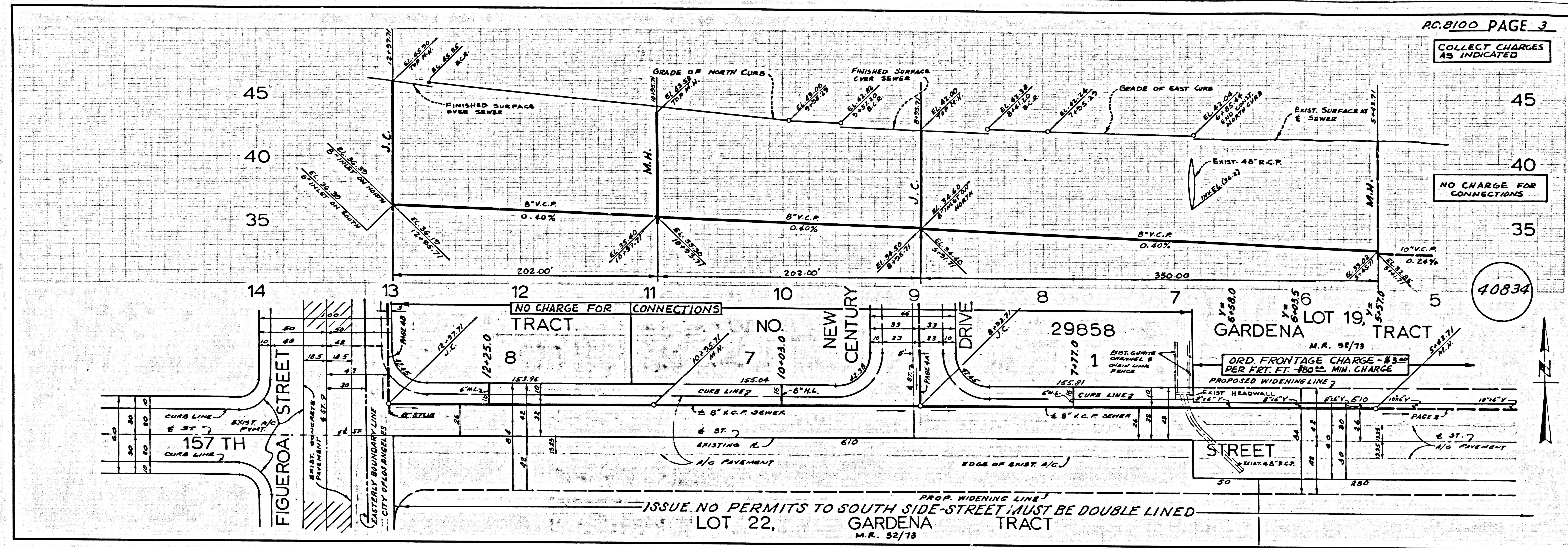
COUNTY OF LOS ANGELES, CALIFORNIA
 JOHN A. LAMBE, COUNTY ENGINEER
 J. D. PARKURST, CHIEF ENGINEER
 CO. SAN. DIST. NO. 8
 APPROVED BY: *Manuel S. Bond* REGIONAL ENGINEER
 APPROVED BY: *J.P. ...* OFFICE ENGINEER
 CHECKED BY: *Barbara ...* 8-8-68
 REG. C. E. NO. 10652
 J.N. 0250.02



P.C. 8100 PAGE 2
 COLLECT CHARGES AS INDICATED

40833

ISSUE NO PERMITS TO SOUTH SIDE - STREET MUST BE DOUBLE LINED



S.S. 100 L.A. COUNTY SEWER SHEET NO. 2 OF 246 BLUEPRINT 50

47