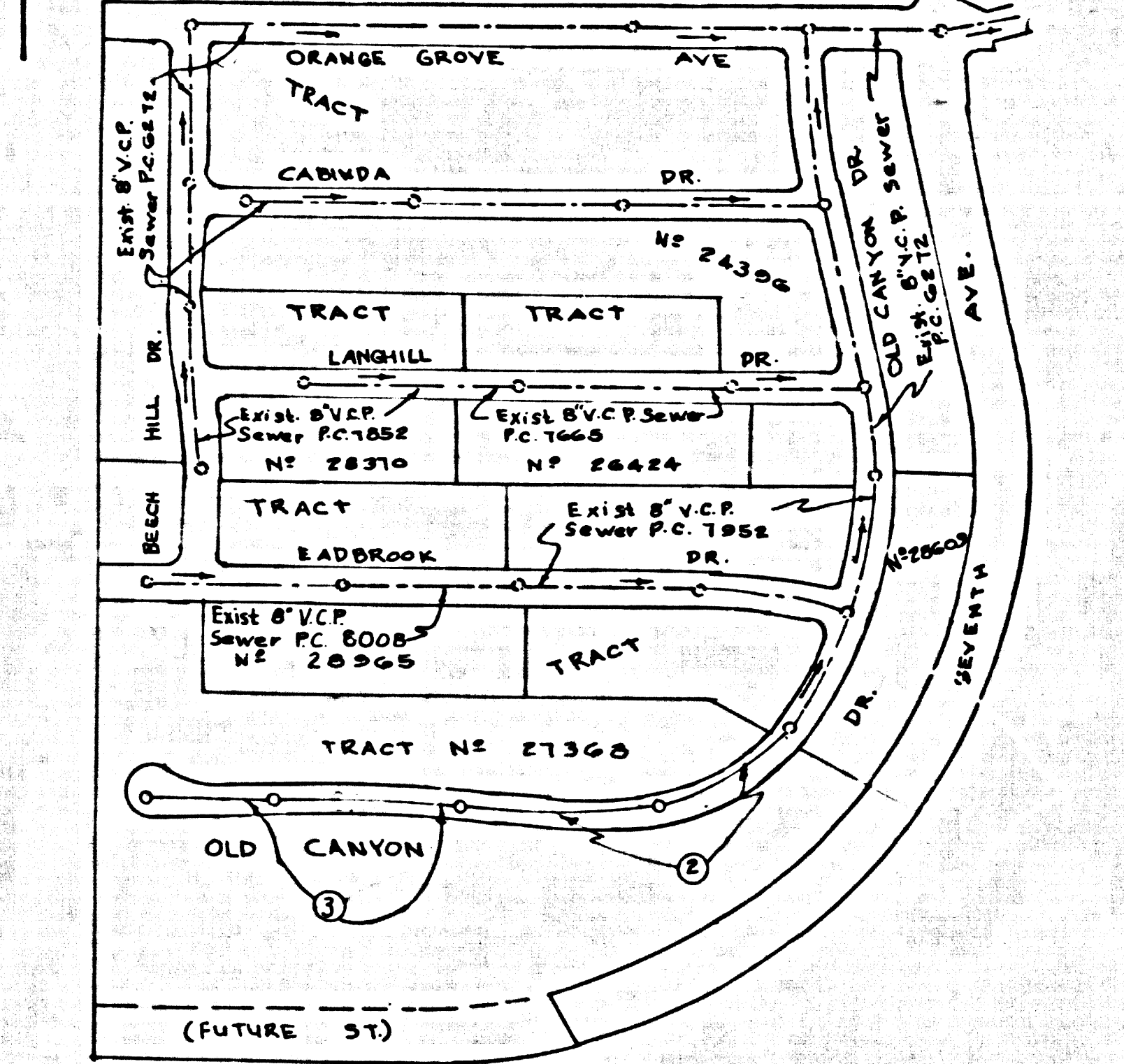


B.M. 591596 ELEV. 502.246  
 Rd. Dept. B.M. Tag in concrete wall of private drive  
 So. of Orange Grove Ave. E.E. of E. priv. drive  
 159 Ave. E 45 Sa 4: 28' E of 4' inter.

WHITTIER QUAD. 19.55

Note: The 1965 adjusted elev. for B.M. 591596 is Elev. 502.211 (Now 591596)  
 Adj. 0.25' for all elevations on these plans to be on 1965 Datum



INDEX MAP  
 TRACT No. 27368  
 P.C. 8102  
 SCALE 1"=300'

The following latest revised standard Plans on file in the office of the County Engineer shall apply in the construction of this project.

Legend	5-1
Min Public Safety Requirements	5-2
Brick Manholes	5-3
Non Reinforced Precast Concrete Manholes	5-5
Reinforced Precast Concrete Manholes	5-6
Manhole Frame and Cover	5-15
Manhole Slop	5-17
Bedding for Sewer Pipe	5-21
Credling and Encasement	5-23
Wye or Tee Support	5-24
Allowable Trench Widths	5-33

Lots 1 & 2 Served by  
 Sewer in Eadbrook Dr.  
 P.C. 8008 Page 2

No connections for the disposal of  
 industrial wastes shall be made to  
 sewers shown on these drawings  
 without written permission from the  
 Chief Engineer and General Manager  
 of the County Sanitation Districts.

County Sanitation Districts shall be  
 notified prior to the following so  
 that required inspection can be made  
 (Phone 327-1025 - r 644-8089)

Acceptance of the project.

## DOUBLE VERTICAL SCALE LA PUENTE BLDG. DIST. NO. 2

- PROVIDE STAKES ON THE PROPERTY LINE OR PROPERTY LINES PRODUCED AT RIGHT ANGLES TO THE SEWER LINE AT THE CENTER LINE OF EACH MANHOLE.
- NO REPRESENTATIVE OF THE COUNTY ENGINEER WILL SURVEY OR LAY OUT ANY PORTION OF THE WORK.
- THE PRIVATE ENGINEER SHALL FURNISH THE COUNTY ENGINEER WITH GRADE SHEETS AND STATIONING FOR ALL HOUSE LATERALS AND 10" V.P. BRANCHES AND SHALL PROVIDE STAKES FOR THEM AT THEIR PROPER LOCATIONS WITH STATIONING FULLY MARKED. ALL HOUSE LATERALS SHALL BE CONSTRUCTED IN A STRAIGHT ALIGNMENT AT RIGHT ANGLES FROM THE MAIN LINE SEWER EXCEPT AS SHOWN ON THE PLANS. HOUSE LATERALS FROM CHIMNEYS SHALL NOT HAVE AN ANGLE OF LESS THAN 45° WITH THE MAIN LINE SEWER. ANY CHANGE IN ALIGNMENT SHALL BE REQUESTED IN WRITING BY THE PRIVATE ENGINEER.
- THE PRIVATE ENGINEER SHALL FURNISH THE HOUSE LATERAL DEPTH AT THE PROPERTY LINE BELOW THE TOP OF CURB ELEVATION FOR EACH HOUSE LATERAL ON THE GRADE SHEET.
- NO REVISIONS SHALL BE MADE IN THESE PLANS WITHOUT THE APPROVAL OF THE COUNTY ENGINEER.
- THE CONTRACTOR SHALL NOTIFY THE CONSTRUCTION DIVISION BY TELEPHONE, MADISON 6-6747, EXT. 8181, AT LEAST TWENTY-FOUR HOURS BEFORE STARTING ANY WORK UNDER THIS CONTRACT.
- ALL STRUCTURES SHALL BE EITHER BRICK MANHOLES PER 5-3 OR PRECAST CONCRETE MANHOLES PER 5-5 OR 5-6 EXCEPT AS NOTED.
- "T" OR "Y" BRANCHES MAY BE USED FOR CONNECTIONS TO MAIN LINE SEWER EXCEPT AS NOTED.
- MANHOLE TOPS IN UNAPPROVED RIGHTS-OF-WAY TO BE SIX INCHES ABOVE FINISHED GRADE.
- USE EXTRA STRENGTH PIPE. ALL PIPE IS STANDARD DEPTH EXCEPT AS NOTED.
- VITRIFIED CLAY PIPE JOINTS SHALL BE TYPE "D", "F", OR "G" PER S.D.S. SPEC. SEC. 208-E.
- IF A POWER POLE IS WITHIN THREE FEET OF THE SEWER, THE SEWER SHALL BE ENCASED, PER 5-23, TWO FEET ON EACH SIDE FROM THE POINT OF INTERFERENCE.
- IF DURING THE COURSE OF CONSTRUCTION IT IS DETERMINED THAT THERE IS LESS THAN FOUR FEET OF COVER OVER THE TOP OF A MAIN LINE OR HOUSE LATERAL V.C.P. SEWER WHICH IS NOT INDICATED ON THE PLANS, THE PIPE SHALL BE ENCASED PER 5-23, UNLESS OTHERWISE APPROVED BY THE COUNTY ENGINEER.
- HOUSE LATERALS TO BE CONSTRUCTED WITH INVERTS AT PROPERTY LINE 4 FEET BELOW CURB GRADE EXCEPT AS NOTED.
- RESURFACE ALL TRENCHES WITHIN PAVED AREAS TO MEET L.A. COUNTY ROAD DEPT. OR CALIFORNIA STATE HIGHWAY REQUIREMENTS IN ACCORDANCE WITH PERMITS.
- SEWERS TO BE TESTED FOR LEAKAGE PER S.D.S. SEC. 208-E. 2.7 STANDARD SPECIFICATIONS.
- REFER TO SECTION 11-10.41 THE STANDARD SPECIFICATIONS REGARDING SAFETY DEVICES.
- SPECIAL PRECAUTIONS IN DESIGNATED AREAS:  
 (a) BACKFILL TRENCHES AND REPLACE OTHER EARTH REMOVED SO AS TO ACHIEVE THE NATURAL OR FINISH GRADES AND SLOPES SHOWN ON THE GRADING PLAN.  
 (b) APPROVED FOR THIS TRACT BY THE BUILDING AND SAFETY DIVISION.  
 (c) ALL BACKFILL AND EARTH REPLACED SHALL BE COMPACTED TO A MINIMUM OF 90% OF MAXIMUM DENSITY PER ASTM STANDARD METHOD OF TEST D 1557-57 AS MODIFIED. ACCEPTABLE CERTIFICATION OF SUCH COMPACTION SHALL BE SUBMITTED TO THE CONSTRUCTION DIVISION.
- ALL JOINTS BETWEEN CAST IRON PIPE AND VITRIFIED CLAY PIPE SHALL BE MADE WITH A RUBBER DRESS JOINT TYPE "C" OR "D" (WITH BUSHING IF NECESSARY) PER STANDARD SPECIFICATIONS, SECTION 208-E.

**COLLECT CHARGES  
 AS INDICATED**

**NOTICE TO CONTRACTOR**  
 The existence and location of any underground utility pipes or structures shown on these plans are obtained by a search of the available records. To the best of my knowledge there are no existing utilities except as shown on these plans. The contractor is required to take due precautionary measures to protect the utility lines shown and any other lines not of record or not shown on these plans.  
 J.S. Manning  
 222-7876

PROFILE, ALIGNMENT AND GRADE OF P.C. 8102  
 SANITARY SEWERS PAGE 1

TRACT No. 27368

PRIVATE CONTRACT NO. 8102

W.S. 37-04  
 2 SHEETS, 3 PAGES

SCALE: VERT. 1"=5'  
 HORIZ. 1"=40'  
 MAY 1968

PREPARED IN THE OFFICES OF  
 MANNING ENGINEERING CO.

By: *J.S. Manning*  
 REG. C.E. NO. 12616

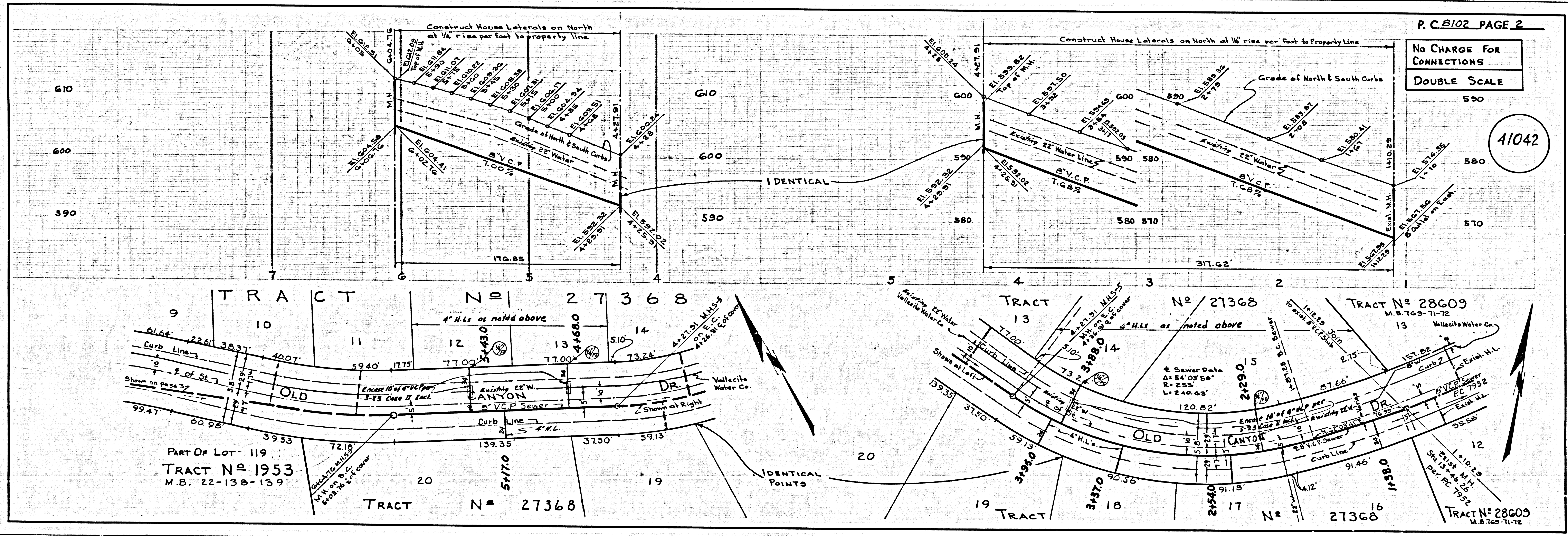
FOR LEGEND SEE PLAN NO. S-1

**NOTE:**  
 GRADES TO WHICH THIS IMPROVEMENT IS TO BE CONSTRUCTED ARE SHOWN ON PLANS AND PROFILES. GRADE POINTS FOR TOP OF CURBS, CENTER LINE OF STREETS, OR CENTER LINE OF ALLEYS ARE SHOWN BY CIRCLES ON PROFILES. AT ALL POINTS BETWEEN DESIGNATED ELEVATIONS ARE IN FEET ABOVE U.S.C. & G.S. MEAN SEA LEVEL DATUM OF 1929.  
 THE DRAWINGS AND THE DATA HEREON ARE HEREBY MADE A PART OF THE SPECIFICATIONS.  
 WORK SHALL BE CONSTRUCTED ACCORDING TO STANDARD SPECIFICATIONS FOR PUBLIC WORKS CONTAINED IN THE COUNTY ENGINEER'S MANUAL, PUBLISHED BY THE COUNTY ENGINEER AND AVAILABLE ONLY BY THE PURCHASE OF THE COUNTY ENGINEER'S MANUAL. BEFORE WORK CAN BE STARTED, THE CONTRACTOR MUST OBTAIN A PERMIT TO OCCUPY IN COUNTY STREETS FROM THE L.A. COUNTY DISTRICT OFFICE, DISTRICT OFFICE FOR THE CITY OF LOS ANGELES, 100 SOUTH MAIN STREET, LOS ANGELES, CALIFORNIA. APPROVAL OF THIS PLAN BY THE COUNTY OF LOS ANGELES DOES NOT CONSTITUTE A REPRESENTATION AS TO THE ACCURACY OF THE LOCATION OF OR THE EXISTENCE OR NON-EXISTENCE OF ANY UNDERGROUND UTILITY PIPE, OR STRUCTURE WITHIN THE LIMITS OF THIS PROJECT. THIS NOTE APPLIES TO ALL PAGES.  
 IF WORK IS TO BE DONE IN A STATE HIGHWAY, A PERMIT MUST BE OBTAINED FROM THE STATE OF CALIFORNIA, DIVISION OF HIGHWAYS, 128 SOUTH SPRING STREET, LOS ANGELES, CALIFORNIA.

COUNTY OF LOS ANGELES, CALIFORNIA  
 JOHN A. LAMBIE, COUNTY ENGINEER J. D. PARKHURST, CHIEF ENGINEER

APPROVED BY: *J.S. Manning* APPROVED BY: *J.D. Parkhurst*

CHECKED BY: *J.S. Manning* REG. C.E. NO. 12616



P.C. 8102 PAGE 2

No CHARGE FOR  
 CONNECTIONS  
 DOUBLE SCALE

41042



