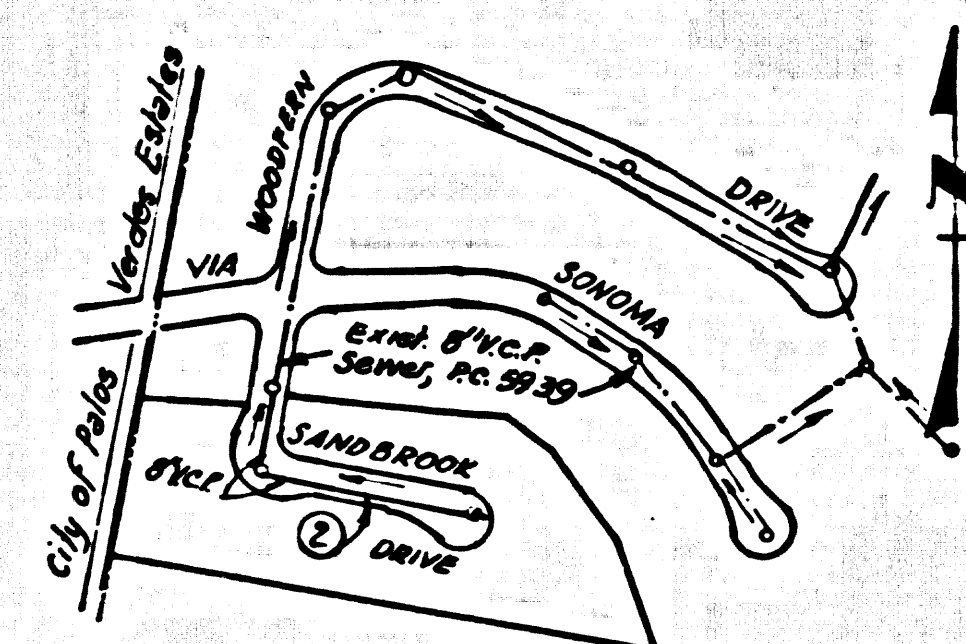


B.M. BY-4420 ELEV. 751.927
 Road Dept. Bench Mark Tag on Conc. rim on M.H.
 45' W. of C.D. in Island on approximate center
 line of Ironwood St. and 45' W. of centerline
 of Silver Spur Road. (4' below rim)
 PALOS VERDES QUAD. 1965 ADJ.



INDEX MAP
 P.C. No. 8108
 TRACT No. 20161
 SCALE: 1"=300'

County Sanitation Districts shall be notified prior to the following so that required inspection can be made (Phone: 899-4473 - 636-3097)

Acceptance of the project.

No connections for the disposal of industrial wastes shall be made to sewers shown on these drawings without written permission from the Chief Engineer and General Manager of the County Sanitation Districts.

DOUBLE SCALE
 LOMITA BLDG. DIST. NO. 12

PROFILE ALIGNMENT AND GRADE OF P.C. 8108
 SANITARY SEWERS PAGE 1
 TO BE CONSTRUCTED IN
 TRACT No. 20161

PRIVATE CONTRACT NO. 8108

W.S. 27
 1 SHEET OF 2 PAGES

SCALE: VERT. 1"=4'
 HORIZ. 1"=40'

DEC., 1968

PREPARED IN THE OFFICES OF

SOUTH BAY ENGINEERING CORP.

40858

FOR LEGEND SEE PLAN NO. S-1

NOTES:

1. PROVIDE STAKES ON THE PROPERTY LINE OR PROPERTY LINES PRODUCED AT RIGHT ANGLES TO THE SEWER LINE AT THE CENTER LINE OF EACH MANHOLE.
2. NO REPRESENTATIVE OF THE COUNTY ENGINEER WILL SURVEY OR LAY OUT ANY PORTION OF THE WORK.
3. THE PRIVATE ENGINEER SHALL FURNISH THE COUNTY ENGINEER WITH GRADE SHEETS AND STATIONING FOR ALL HOUSE LATERALS & Y BRANCHES AND SHALL PROVIDE STAKES FOR THEM AT THEIR PROPER LOCATIONS WITH STATIONING PLAINLY MARKED. ANY CHANGE IN LOCATION SHALL BE REQUESTED IN WRITING BY THE PRIVATE ENGINEER. ALL HOUSE LATERALS SHALL BE CONSTRUCTED AT RIGHT ANGLES TO THE MAIN LINE SEWER EXCEPT AS SHOWN ON THE PLAN.
4. THE PRIVATE ENGINEER SHALL FURNISH THE HOUSE LATERAL DEPTH AT THE PROPERTY LINE BELOW THE TOP OF CURB ELEVATION FOR EACH HOUSE LATERAL ON THE GRADE SHEET.
5. NO BRIDGINGS SHALL BE MADE IN THESE PLANS WITHOUT THE APPROVAL OF THE COUNTY ENGINEER.
6. USE STANDARD MANHOLE FRAMES AND COVERS, 5'-0" EXCEPT AS NOTED.
7. USE EXTRA STRENGTH PIPE, ALL PIPE IS STANDARD DEPTH, EXCEPT AS NOTED.
8. VITRIFIED CLAY PIPE JOINTS SHALL BE TYPE "D", "F", OR "S" PER STANDARD SPEC. SEC. 208-2.
9. RESURFACE ALL TRENCH WITHIN PAVED AREA TO MEET L.A. COUNTY ROAD DEPT. OR CALIF. STATE HIGHWAY REQUIREMENTS IN ACCORDANCE WITH PERMITS.
10. IF A POWER POLE IS WITHIN THREE FEET OF THE SEWER, THE SEWER SHALL BE ENCASED AND REINFORCED WITH CONCRETE FROM THE PROPERTY LINE TO THE POWER POLE.
11. HOUSE LATERALS TO BE CONSTRUCTED WITH INVERTS AT PROPERTY LINE 2 FEET BELOW CURB GRADE EXCEPT AS NOTED.
12. ALL STRUCTURES SHALL BE EITHER BRICK MANHOLES PER S-3 OR PRECAST CONCRETE MANHOLES PER S-2 EXCEPT AS NOTED.
13. SEWERS TO BE TESTED FOR LEAKAGE PER SECTION 306-2.3.7 STANDARD SPECIFICATIONS.
14. MANHOLE TOPS ON UNIMPROVED RIGHTS-OF-WAY TO BE SIX INCHES ABOVE FINISHED GRADE.
15. THE CONTRACTOR SHALL NOTIFY THE CONSTRUCTION DIVISION BY TELEPHONE, MADISON 5474, EXT. 81-551 AT LEAST TWENTY-FOUR HOURS BEFORE STARTING ANY WORK UNDER THIS CONTRACT.
16. IF DURING THE COURSE OF CONSTRUCTION IT IS DETERMINED THAT THERE IS LESS THAN FOUR FEET OF COVER OVER THE TOP OF A MAINLINE OR HOUSE LATERAL V.C.P. SEWER WHICH IS NOT INDICATED ON THE PLANS, THE PIPE SHALL BE ENCASED PER S-23 UNLESS OTHERWISE APPROVED BY THE COUNTY ENGINEER.
17. REFER TO SECTION 7-10.4.1 OF THE STANDARD SPECIFICATIONS REGARDING SAFETY ORDERS.
18. THE FOLLOWING LATEST REVISED STANDARD PLANS ON FILE AT THE OFFICE OF THE COUNTY ENGINEER SHALL APPLY TO THE CONSTRUCTION OF THIS PROJECT.

LEGEND

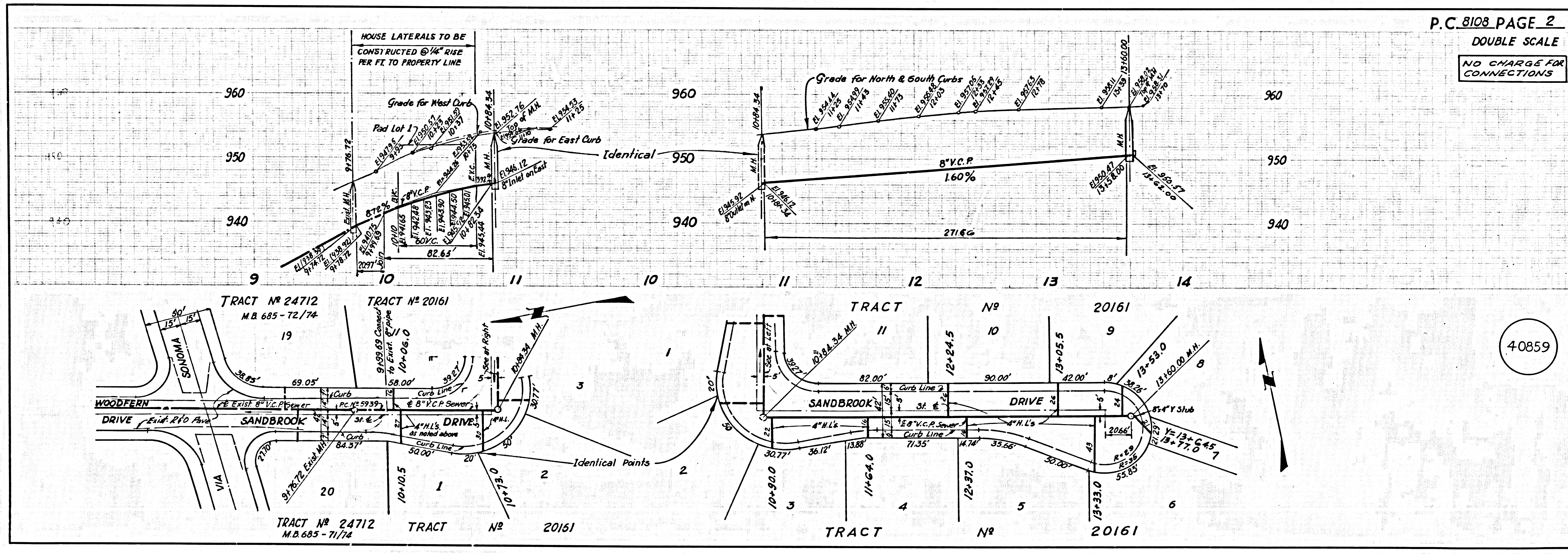
MATERIAL EXCAVATION SAFETY REQUIREMENTS	S-1
BRICK MANHOLES	S-2
NON-REINFORCED PRECAST CONC. MANHOLES	S-3
MANHOLE FRAME AND COVER	S-5
MANHOLE STEP	S-17
BEDDING FOR SEWER PIPE	S-21
WYE OR TEE SUPPORT	S-24
ALLOWABLE TRENCH WIDTHS	S-33

NOTE:
 GRADES TO WHICH THIS IMPROVEMENT IS TO BE CONSTRUCTED ARE SHOWN ON PLANS AND PROFILES. GRADE POINTS FOR TOP OF CURB, CENTER LINE OF STREETS, OR CENTER LINE OF ALLEYS ARE SHOWN BY CIRCLES ON PROFILES AT ALL POINTS BETWEEN DESIGNATED POINTS THE GRADE SHALL BE ESTABLISHED SO AS TO CONFORM TO A STRAIGHT LINE DRAWN BETWEEN SAID DESIGNATED POINTS.
 THIS DRAWING AND THE DATA HEREON ARE HEREBY MADE A PART OF THE SPECIFICATIONS FOR PUBLIC WORKS CONSTRUCTION AND COUNTY ENGINEER'S SPECIAL PROVISIONS DATED FEB. 15, 1968 AS REVISED TO THE COUNTY ENGINEER, ROOM 330 COUNTY ENGINEER BUILDING, JOB NO. 2ND. STREET, SUFFICIENT TO COVER THE COST OF CONSTRUCTION INSPECTION AND RECORD PLANS.
 BEFORE WORK CAN BE STARTED, THE CONTRACTOR MUST OBTAIN A PERMIT TO EXCAVATE IN COUNTY STREETS FROM THE L.A. COUNTY ROAD DEPT., DISTRICT OFFICE NO. 1, AND PAY A FEE.
 APPROVAL OF THIS PLAN BY THE COUNTY OF LOS ANGELES DOES NOT CONSTITUTE A REPRESENTATION AS TO THE ACCURACY OF THE LOCATION OR THE EXISTENCE OR NON-EXISTENCE OF ANY UNDERGROUND UTILITY PIPE, OR STRUCTURE WITHIN THE LIMITS OF THIS PROJECT. THIS NOTE APPLIES TO ALL PAGES.
 IF WORK IS TO BE DONE IN A STATE HIGHWAY, A PERMIT MUST BE OBTAINED FROM THE STATE OF CALIFORNIA, DIVISION OF HIGHWAYS, 128 SOUTH SPRING STREET.

COUNTY OF LOS ANGELES, CALIFORNIA
 APPROVED, JOHN A. LAMBIE, COUNTY ENGINEER J. D. PARKHURST, CHIEF ENGINEER
 CO. SAN. DIST. NO. 5
 APPROVED BY [Signature] APPROVED BY [Signature]
 REGIONAL ENGINEER OFFICE ENGINEER
 CHECKED BY [Signature]
 OFFICE OF COUNTY ENGINEER, REG. C. E. NO. 3406

COLLECT CHARGES AS INDICATED

J.N.0250.02



P.C. 8108 PAGE 2
 DOUBLE SCALE
 NO CHARGE FOR CONNECTIONS

40859