

DOUBLE SCALE VERTICALLY
NEWHALL BLDG. DIST. NO. 8.2

NOTES:

- PROVIDE STAKES ON THE PROPERTY LINE OR PROPERTY LINES PRODUCED AT RIGHT ANGLES TO THE SEWER LINE AT THE CENTER LINE OF EACH MANHOLE.
- NO REPRESENTATIVE OF THE COUNTY ENGINEER WILL SURVEY OR LAY OUT ANY PORTION OF THE WORK.
- THE PRIVATE ENGINEER SHALL FURNISH THE COUNTY ENGINEER WITH GRADE SHEETS AND STATIONING FOR ALL HOUSE LATERALS AND "T" BRANCHES AND SHALL PROVIDE STAKES FOR THEM AT THEIR PROPER LOCATIONS WITH STATIONING PLAINLY ALIGNED. ALL HOUSE LATERALS SHALL BE CONSTRUCTED AT A PERMANENT ALIGNMENT OF 90 DEGREES TO THE MAIN LINE OF SEWER EXCEPT AS NOTED OTHERWISE. ANY CHANGE IN ALIGNMENT SHALL BE REQUESTED BY THE PRIVATE ENGINEER.
- THE PRIVATE ENGINEER SHALL FURNISH THE HOUSE LATERAL SEWER AT THE PROPERTY LINE 24" DIA. 1/8" THK. STEEL CASING UNLESS OTHERWISE NOTED ON THE GRADE SHEET.
- NO REVISIONS SHALL BE MADE IN THESE PLANS WITHOUT THE APPROVAL OF THE COUNTY ENGINEER.
- THE CONTRACTOR SHALL NOTIFY THE CONSTRUCTION DIVISION BY TELEPHONE, MADISON 9-4747, EXT. 81351, AT LEAST TWENTY-FOUR HOURS BEFORE STARTING ANY WORK UNDER THIS CONTRACT.
- MANHOLES SHALL BE BRICK SEWER STRUCTURES PER 5-2.
- "T" OR "Y" BRANCHES MAY BE USED FOR CONNECTION TO MAINLINE SEWERS EXCEPT AS NOTED.
- MANHOLE TOPS IN UNIMPROVED AREAS SHALL BE 24" HIGHER ABOVE FINISHED GRADE, EXCEPT AS NOTED.
- USE EXTRA STRENGTH PIPE, ALL PIPE IS STANDARD WITH EXCEPT AS NOTED.
- VITRIFIED CLAY PIPE JOINTS SHALL BE TYPE "D", "E", OR "F" PER STANDARD SPEC. SEC. 206-5.
- IF A POWER POLE IS WITHIN THREE FEET OF THE SEWER, THE SEWER SHALL BE ENCASED, PER 5-8, TWO FEET ON EACH SIDE FROM THE POINT OF INTERFERENCE.
- IF DURING THE COURSE OF CONSTRUCTION IT IS DETERMINED THAT THERE IS LESS THAN FOUR FEET OF COVER OVER THE TOP OF A MAIN LINE OR HOUSE LATERAL V.C.P. SEWER WHICH IS NOT INDICATED ON THE PLANS, THE PIPE SHALL BE ENCASED PER 5-8, UNLESS OTHERWISE APPROVED BY THE COUNTY ENGINEER.
- HOUSE LATERALS TO BE CONSTRUCTED WITHIN AREAS TO BE PAVED SHALL BE 24" DIA. 1/8" THK. STEEL CASING EXCEPT AS NOTED.
- REQUIRE ALL TRENCHES WITHIN PAVED AREAS TO MEET L.A. COUNTY ROAD DEPT. OR CALIFORNIA STATE HIGHWAY REQUIREMENTS IN ACCORDANCE WITH PERMITS.
- SEWERS TO BE TESTED PER SECTION 206-2.5.7 STANDARD SPECIFICATIONS.
- REFER TO SECTION 7-10.4.1 OF THE STANDARD SPEC. REGARDING SAFETY DEVICES.
- SPECIAL BACKFILL IN DESIGNATED AREAS:
 a. BACKFILL TRENCH AND REPLACE OTHER EARTH REMOVED AS TO RESTORE THE MATERIAL, GRADES AND SLOPES.
- SEWER PIPE BEDDING SHALL CONFORM TO 5-7.
- CONTRACTOR MUST PROVIDE EXISTING UTILITY LINES WHICH ARE CROSSING SEWER LINE AND SURVEY ELEVATIONS TO ENGINEER PRIOR TO CONSTRUCTION.
- ADJUST TOPS AND MARK R.C. MANHOLES IN ACCORDANCE WITH INDEX MAP PER DETAIL ON PAGE 3.
- CLEAN R.C. T.C.S. PER COUNTY REG.

NOTICE TO CONTRACTOR
 The existence and location of any underground utility lines of structures shown on these plans are obtained by a search of the available records. To the best of my knowledge there are no existing utilities except as shown on these plans. The contractor is required to take due precautionary measures to protect the utility lines shown and any other lines not of record or not shown on these plans.

ISSUE NO HOUSE CONN. PERMITS UNTIL P.C. 7603 IS ACCEPTED

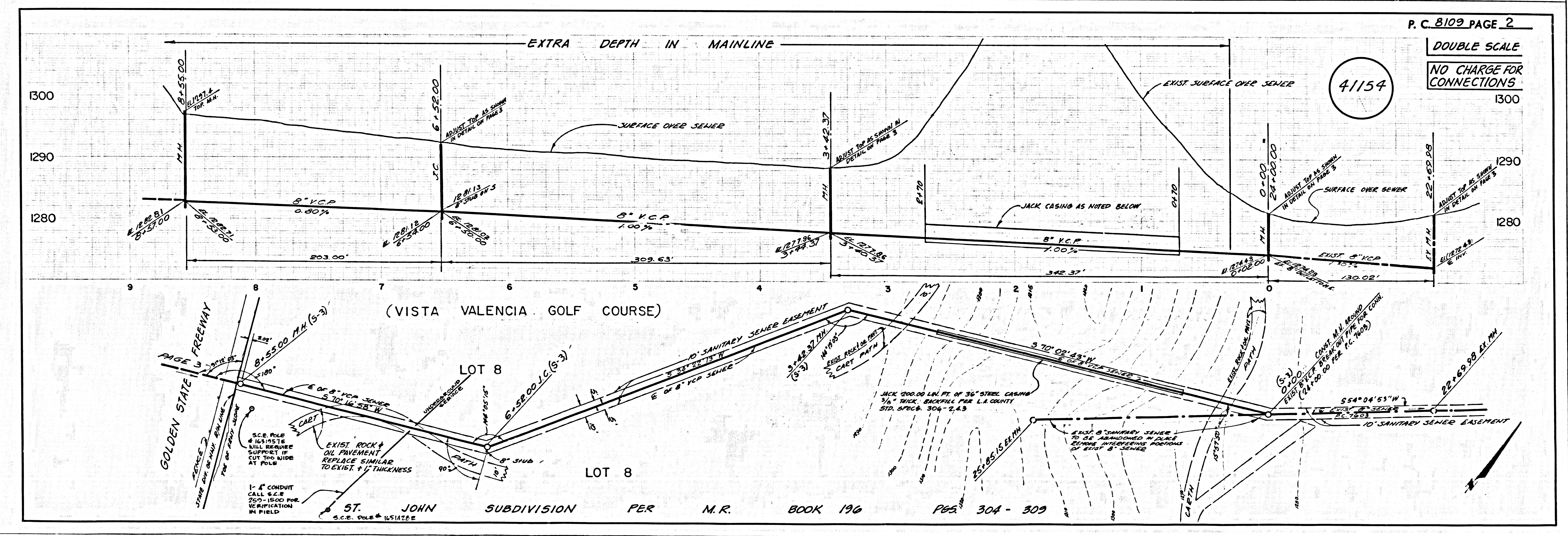
PROFILE, ALIGNMENT AND GRADE OF **P.C. 8109**
SANITARY SEWERS PAGE 1
 CONSTRUCTED IN
R/W FOR TIP'S RESTAURANT
PRIVATE CONTRACT NO. 8109
 W.S. 05 C-3
 2 SHEETS, 3 PAGES
 SCALE: VERT. 1" = 4'
 HORIZ. 1" = 40'
 MAY, 1968
 PREPARED IN THE OFFICES OF
VALCON, INC.
 429 THOUSAND OAKS BLVD.
 THOUSAND OAKS, CALIF.
 REG. C.E. NO. 15535
 FOR LEGEND SEE PLAN NO. 5-1

COUNTY OF LOS ANGELES, CALIFORNIA
JOHN A. LAMBIE, COUNTY ENGINEER
 J. D. PARKURST, CHIEF ENGINEER
 CO. SAN. DIST. NO. 32
 APPROVED BY *Ralph Schaff* 11/16/69
 REGIONAL ENGINEER
 APPROVED BY *J. D. Parkurst*
 CHIEF ENGINEER

4113

COLLECT CHARGES AS INDICATED

J.N. 0369.26



DOUBLE SCALE
NO CHARGE
FOR
CONNECTIONS
1300

4155

