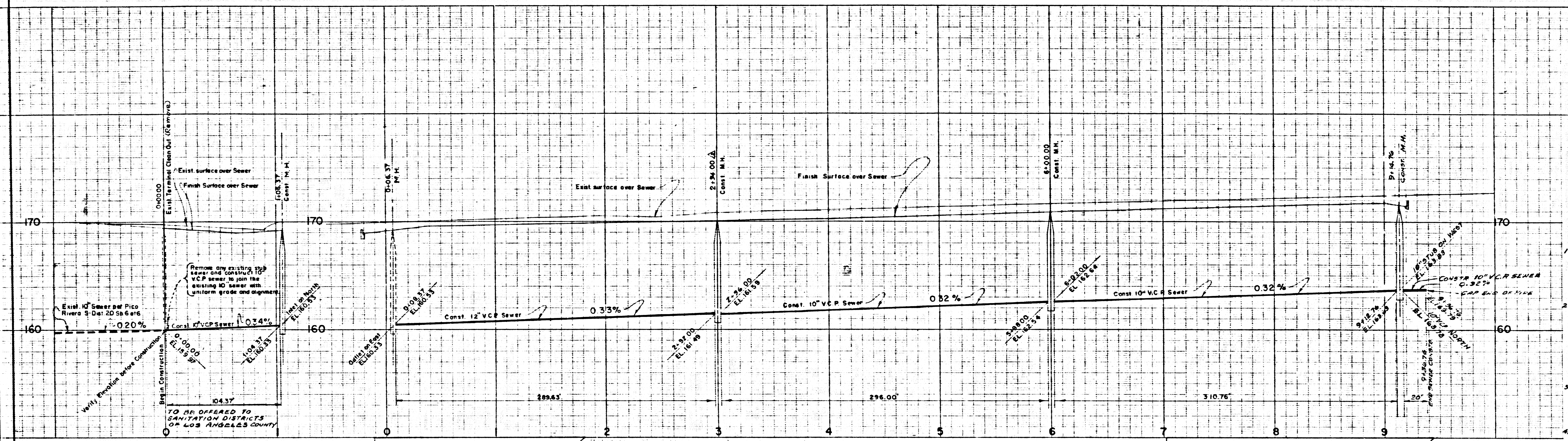


SCALE: 1" = 40' (VERTICAL)
SCALE: 1" = 40' (HORIZONTAL)

SCALE: 1" = 40' (VERTICAL)
SCALE: 1" = 40' (HORIZONTAL)

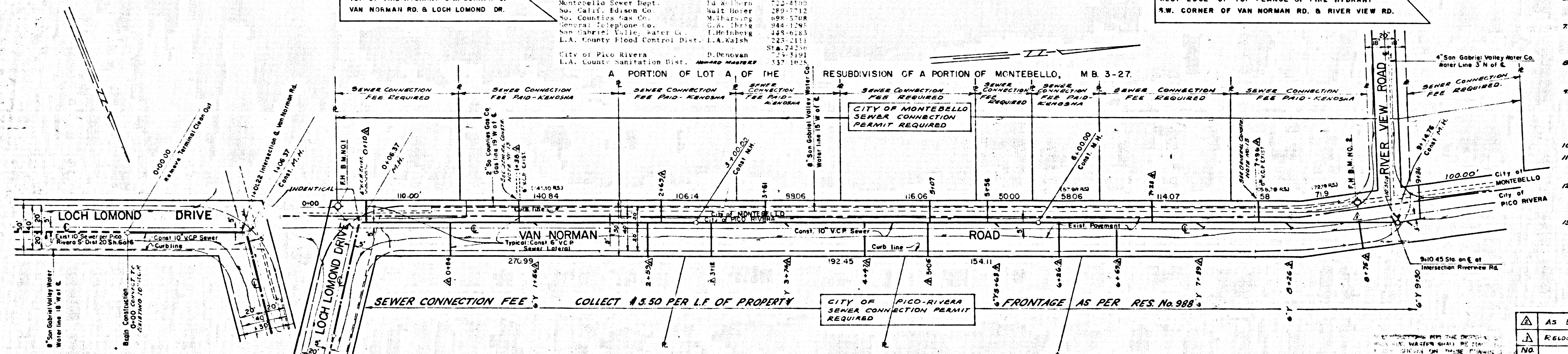
BENCH MARK
COUNTY B.M. 573235
Corner of S. E. of Los Angeles
Ave. & W. of 5th St. at Los
Angeles Ave. & Elst St.
ELEV. 211.958
To convert to local County datum
ADD 0.47'



GENERAL CONSTRUCTION NOTES

1. ALL WORK DETAILED HEREON SHALL BE CONSTRUCTED IN ACCORDANCE WITH THE APPLICABLE STANDARD SEWER PLANS OF THE LOS ANGELES COUNTY ENGINEER, THE STANDARD SPECIFICATIONS FOR PUBLIC WORKS CONSTRUCTION, ASPA-AGCA 1967 EDITION AND THE 1968-69 SUPPLEMENTS.
2. ALL AVAILABLE RECORDS OF THE CITY AND THE UTILITY COMPANIES INVOLVED HAVE BEEN INVESTIGATED AND ALL KNOWN SUBSTRUCTURES ARE SHOWN HEREON. IT SHALL BE THE RESPONSIBILITY OF THE CONTRACTOR TO LOCATE ALL SUB STRUCTURES WHETHER SHOWN HEREON OR NOT, AND PROTECT THEM FROM DAMAGE. THE CONTRACTOR SHALL BEAR THE TOTAL EXPENSE OF REPAIR OR REPLACEMENT OF SAID SUBSTRUCTURES DAMAGED BY HIS OPERATION IN CONNECTION WITH THE PROSECUTION OF THIS WORK.
3. CONTRACTOR SHALL NOTIFY THE LOS ANGELES COUNTY SANITATION DISTRICT NO. 2 AND THE STREET SUPERINTENDENT OF THE CITY OF MONTEBELLO 48 HOURS PRIOR TO STARTING WORK. SANITATION DISTRICT TEL. NO. 337-1025. MONTEBELLO STREET DEPT. TEL. NO. 722-8100 EXT. 238.
4. PRECAST CONCRETE MANHOLES PER STANDARD DRAWING S-6 MAY BE SUBSTITUTED FOR BRICK MANHOLES.
5. V.C.P. JOINTS SHALL BE MECHANICAL COMPRESSION JOINTS OF A TYPE APPROVED BY THE CITY ENGINEER.
6. SEWERS SHALL BE TESTED FOR LEAKAGE IN ACCORDANCE WITH SECTION 304.8 OF THE STANDARD SPECIFICATION FOR PUBLIC WORKS CONSTRUCTION, 1967 EDITION.
7. HOUSE LATERALS SHALL BE NO LESS THAN 6 FEET BELOW GRADE AT PROPERTY LINE AND SHALL BE CONSTRUCTED WITH A MINIMUM INVERT GRADE OF 16 INCH PER FOOT UNLESS OTHERWISE SHOWN ON THE PLAN.
8. CONSTRUCT 6" V.C.P. HOUSE LATERALS AS STATIONED ON PLAN UNLESS THE LOCATION IS MODIFIED BY THE PROPERTY OWNER AND APPROVED BY THE CITY ENGINEER.
9. IF THE STREET IS UNDER CONSTRUCTION, THE CONTRACTOR SHALL ADJUST ALL MANHOLES TO FINISHED GRADE UPON COMPLETION OF PAVING. ASPHALTIC CONCRETE SHALL BE USED TO PATCH AROUND MANHOLES UNDER THE STREET PAVEMENT IS ASPHALTIC CONCRETE, AND P.C.C. SHALL BE USED WHERE THE STREET PAVEMENT IS P.C.C.
10. ALL CONCRETE ASPHALT SHALL BE REMOVED TO A SAW-CUT.
11. ALL TRENCHES WITHIN THE ROADWAY SHALL BE PAVED TO A THICKNESS OF ONE INCH GREATER THAN THE EXISTING PAVEMENT THICKNESS WITH MATCHING PAVEMENT MATERIALS.
12. THE CONTRACTOR SHALL BE RESPONSIBLE FOR OBTAINING ALL NECESSARY PERMITS AND FOR COORDINATING HIS OPERATIONS WITH OTHER CONTRACTORS AND UTILITY COMPANIES IN THE CONSTRUCTION AREA.
13. THE ALIGNMENT AND GRADE OF THE SEWER LATERALS SHOWN AT STATION 8+75, SHALL BE ADJUSTED FOR A FUTURE CONNECTION TO THE EXISTING SEWER LATERALS AT PROPERTY LINE. THE EXISTING HOUSE CONNECTION SHALL BE LOCATED PRIOR TO THE CONSTRUCTION OF THE STREET LATERAL.

NOTE: SEWER INSPECTION REQUIRED DURING CONSTRUCTION BY:
(A) L.A. COUNTY SANITATION DIST. - PHONE MAINS - 337-1025
(B) CITY OF MONTEBELLO - ED WELBORNE 722-200 EXT. 228



THE FOLLOWING LOS ANGELES COUNTY ENGINEER STANDARD SEWER PLANS ARE USED ON THIS PROJECT:

- S-1 Legend
- S-2 Minimum Excavation Safety Requirements
- S-3 Brick Manhole
- S-4 Reinforced Precast Concrete Manhole
- S-5 Manhole Frame and Cover
- S-6 Standard Manhole Step
- S-7 Riser Support
- S-8 Stoppers

THE FOLLOWING MONTEBELLO STANDARD DRAWINGS ARE USED ON THIS PROJECT:

- 10 Standard French Backfill

CITY OF MONTEBELLO
CAPACITY IN THIS SEWER FOR ALL PROPERTY WITHIN THE CITY OF PICO RIVERA IS HEREBY ASSIGNED TO THE CITY OF MONTEBELLO AND NO CITY OF PICO RIVERA SEWER CONNECTION PERMIT WILL BE REQUIRED FOR DIRECT CONNECTIONS TO THIS SEWER.

APPROVED: *[Signature]*
CITY ADMINISTRATOR

CITY OF PICO RIVERA
CAPACITY IN THIS SEWER FOR ALL PROPERTY WITHIN THE CITY OF MONTEBELLO IS HEREBY ASSIGNED TO THE CITY OF PICO RIVERA AND NO CITY OF MONTEBELLO SEWER CONNECTION PERMIT WILL BE REQUIRED FOR DIRECT CONNECTIONS TO THIS SEWER.

APPROVED: *[Signature]*
CITY MANAGER

CITY OF PICO RIVERA
REF. P.C. 8111

LA COUNTY SANITATION DISTRICT NO. 2
APPROVED: *[Signature]* CHIEF ENGR.
DATE: 8-18-67

PREPARED BY
LAMPMAN & ASSOCIATES, LTD.
DESIGN ENGINEER RE NO. C-11372
APPROVED: *[Signature]*
CITY OF PICO RIVERA
DR. OF ENGINEERING SERVICES

42198 RECEIVED
Dept. of Engineering Services
JUN 5 1967

AS BUILT	DATE
RELOCATE SEWER LINE FROM 0+00 TO 0+30	
REVISIONS	DATE APPROVED
NO	

CITY OF MONTEBELLO
ENGINEERING DEPARTMENT

PLAN & PROFILE
SEWERS IN:
LOCH LOMOND DRIVE - From 1336' East of Van Norman Road to Van Norman Road
VAN NORMAN ROAD - From Loch Lomond Drive to River View Road

DESIGNED BY: *[Signature]* DATE: 8/18/67
CHECKED BY: *[Signature]* DATE: 8/18/67
SCALE: HORIZ. 1" = 40' VERT. 1" = 4'
DRAWN BY: *[Signature]* DATE: 8/18/67
APPROVED BY: *[Signature]* DATE: 8/18/67
FIELD BOOK REFERENCE: PROJECT NUMBER: CP-29
SHEET 1 OF 1 SHEETS PLAN NO. 42198